

VOL. 2 ISSUE 10 · NOVEMBER 2023

# CHESS JOURNAL

Official Newsletter of the Scott County Chess Club

## Come join us on first Saturdays!

Our meetings are usually held on the **first Saturdays** of each month so everyone can plan ahead to join us.

Due to our annual tournament this weekend, the **NEXT regular meeting** will be held on December 2 at the **Forest Public Library** - 9 to 11 a.m. (210 S. Raleigh St.)

**Everyone is welcome! All ages and skill levels**  
**NO membership fee to participate**



*Players may bring their own chess set if they have one.  
We have boards and sets to use.  
(provided by Friends of Forest Library group)*



scottcountychessclub



@scott\_chess



## This issue:

3rd Roosevelt Classic  
PAGE 02-03

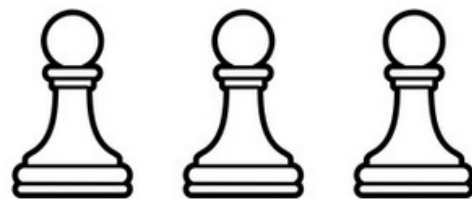
Chess at State Fair  
PAGE 04

Highlights:  
Chess Camp  
PAGE 05-06

Calendar  
PAGE 07

Tournament information  
PAGE 08

scottcountychessclub.org



## Chess News Highlights

# Roosevelt Classic

## 3rd annual Tournament is Saturday

MORTON – The 3rd annual **Roosevelt Chess Classic tournament** is set for November 4, at Roosevelt State Park. Like the first one, this event will feature individuals and teams and has garnered considerable amount of attention through registrations of more than 50 players planning to participate from across Mississippi.

Our first Roosevelt Classic in November 2021 attracted 50 players from around Mississippi and neighboring states. Our second Roosevelt Classic attracted 69 players from across Mississippi and from Louisiana. Combined with our spring Bienville classic series, in our four tournaments so far, we have had 192 players participate from Mississippi, Tennessee, Louisiana, and Florida.

Before we go any further, recognition goes to our past sponsors who generously donated funds to help make all of tournaments successful. Our original sponsors have remained with us and we have added more each year. This is a tremendous benefit because their contributions help keep the registration fees and expenses as low as possible which means funds left over after all bills are paid can be carried over to the next event. A list of our sponsors and partners can be found to the right on this page.

We really appreciate the support from the community and the businesses who have helped make these tournaments possible. We are getting noticed around the state with strong showings of players visiting Scott County to play this great game. There is so much potential to make our community a chess destination in Mississippi.

## It's not too late to register!!

The early bird discounted rate has expired, but you can still register to play by sending an email request to [scottcountychessclub@gmail.com](mailto:scottcountychessclub@gmail.com) or visit our web site at [scottcountychessclub.org](http://scottcountychessclub.org). We just need your name, US Chess Federation ID number (make sure it is active), what section you wish to play in, and what payment method you wish to use.

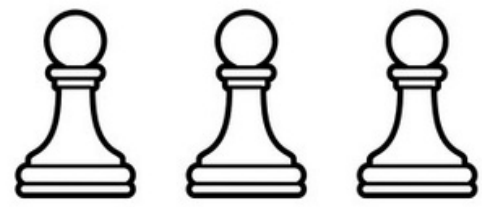
More details are on the next page.

## Sponsors

Community Bank  
Cox Chevron  
Bank of Morton  
Tom Miles  
Priority One Bank  
French's Pharmacy  
Fountain ACE Hardware  
Bank of Forest  
Jack Batte and Sons Lumber Mill  
Joe McGee Construction

## Partners

Central MS Regional Library System  
Forest Public Library  
Friends of Forest Library  
U.S. Chess Federation  
MS Chess Association  
MS Scholastic Chess Association  
Capital City Chess Club  
Roosevelt State Park  
Bienville National Forest  
Forest Baptist Church  
Andrew Jackson Council - BSA  
Community Bank  
SwissSys  
MS Trophy  
Larchwood Designs  
Go Daddy (web hosting)  
MS Secretary of State  
Billy Freeman Photography  
Ingram Printing  
Scott County Times  
SuperTalk MS  
WLBT - Studio 3  
Forest Chamber of Commerce  
Town of Lake  
City of Morton



# Chess News Highlights

'In chess,  
there are no  
losers.  
Either you  
win or you  
learn ...  
sometimes  
both.'

**Roosevelt State Park, Alfreda-Harris Lodge,**

**2149 MS Highway 13, Morton, Exit 77 on Interstate 20**

**4 rounds – Swiss System – Game control: 45+5**

**active** U.S. Chess Federation membership and notation **required**

**Open** (Cash - \$200 & plaque - 1st, \$100 & medal - 2nd; \$50 & medal - 3rd)

**U1200** (Trophy for 1st and medals for 2nd and 3rd)

**U800** (Trophy for 1st and medals for 2nd and 3rd)

**Teams may have any desired number of players.**

**The top 4 players' scores will determine team score**

*(Medals awarded to the top four players of the winning team)*

**\$40** entry fee for Individuals - **\$120** entry fee for Teams

**To Register: Players must provide their NAME, Active Chess Federation ID#, desired SECTION, and desired METHOD of PAYMENT**

to the following email address: [scottcountychessclub@gmail.com](mailto:scottcountychessclub@gmail.com)

**An email response will be sent within 24-48 hours after first contact**

**to finalize registration and make payment arrangements.**

*Please send email with information BEFORE making any payment*

**\*\*\*Please advise if participating with a team or organizing a team.**

*Leaders should provide team name and members' names with **active ID#s***

**\*\* Please check your membership status with the U.S. Chess Federation to make sure your status is active and renew if necessary before registering. \*\***

**These payment methods are strongly preferred in advance:**

**PayPal, Venmo, CashApp**

*but cash or check can be accepted on site*

**\*Skittles rooms** will be available for casual play between rounds.

*Everyone is encouraged to bring chairs for lounging.*

*Updates will be provided by email during the final week leading up to the event, other times when necessary, and posted on our website.*

**Registration and Check-in 8 a.m. until 9 a.m.**

**Welcome and Briefing of Rules - 9:15 a.m.**

**Round 1 - 9:30 a.m.**

**Round 2 - 11:30 a.m.**

**Round 3 - 2 p.m.**

**Round 4 - 3:30 p.m.**

**Awards** – *To be presented after all games are completed.*

**\*Byes** due to inability to pair = 1.0 **\*Requested byes** = 0.5

*Please make requests before start of desired round.*

*No requested byes in final round*

**For more information, visit [scottcountychessclub.org](http://scottcountychessclub.org)**





## Chess News Highlights

# State Fair '23

The Scott County Chess Club joined forces with the Mississippi Chess Association on October 15 to host a display at the 2023 Mississippi State Fair in Jackson to promote the game of chess.

The experience was incredible as many people stopped at the display area to play the game and learn how it works. It was great exposure as thousands of people attended the Fair during its run.

Officials with the MS Department of Agriculture which operates the State Fair were impressed with our response and have pledged to help increase our presence in future fairs. We appreciate their support.

We expect to expand our presence next year and hold more activities on more days in the Trade Mart Hall.

'Chess is like life.

There are rewards for good choices, consequences for the bad choices.'





## Randy Richardson Memorial Chess Camp = **SUCCESS!!**

The Randy Richardson Memorial Chess Camp was held October 14 in celebration of National Chess Day. The camp was an opportunity for children on multiple age levels to learn and play the game of chess.

The camp was held at the Forest Public Library and included 15-20 players. It was funded through a \$1,000 donation in memory of Randy Richardson, a 1960 graduate of Forest High School. Half of the donation was used for the camp and the other half to purchase chess books for library patrons to check out.

The books are available with the use of library cards.



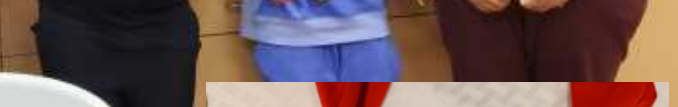
**Richardson**

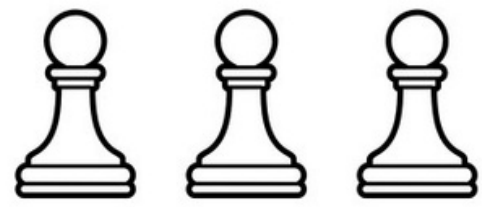


Richardson taught classmates how to play chess during their free times at school. Michael Hawkins made the donation to support chess development in Scott County. The Camp included three sections of students divided by school grades 2-4, 5-8, and 9-12.

The Camp included all participants in a classroom setting to receive instructions with breaks to allow students to put their skills to work. They competed later in a tournament for trophies and medals and received souvenirs.







# Chess Calendar

For more information about all listings:  
see our website at [scottcountychessclub.org](http://scottcountychessclub.org)

'I'm here  
because I  
was told  
there would  
be chess.'

\* **Scott County Chess Club** will hold a regular meeting  
Saturday, December 2, 9-11 am, Public Library, Forest  
This will be our regular meeting - everyone is welcome.

\* **Second Sunday League Chess Tournament**  
Food Court - Outlet Mall, Pearl  
Sunday, November 12, 2 p.m. - Must be pre-registered.

\* **Capital City Chess Club**  
Food Court - Outlet Mall, Pearl  
Tuesdays - casual play - 5:30 until 8 p.m.

\* **Roosevelt Chess Classic**  
Morton, Nov. 4 - All Ages - g/45+5  
See Pages 2-3 of newsletter

\* **North Mississippi Tournament**  
Senatobia, Nov. 4 - All Ages

\* **East Central Mississippi Tournament**  
Meridian, Nov. 11 - All Ages

\* **South Mississippi Tournament**  
Piney Woods, Nov. 11 - Scholastic Only

\* **St. Augustine Fall Chess Tournament**  
Ridgeland, Dec. 9 - All Ages and Scholastic

\* **Gautier High School Tournament**  
Gautier - Dec. 9 - All Ages



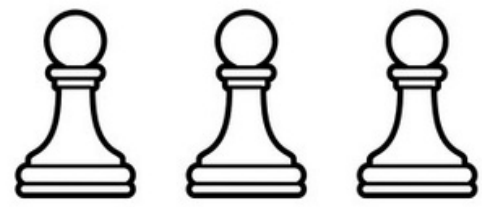
## TOP TO BOTTOM CHESS:

\* **Memphis Chess Club**

Weekly chess tournaments on Saturdays

\* **Mississippi Coast Chess Club**

Thursdays- Newk's, Gulfport



# Tournament action is all around

Many chess players are content to just play casually whenever the opportunity arises. This may include accepting a spontaneous invitation from a fellow chess player or attending a local chess club. However, there is another level to the game of chess - tournaments.

Tournaments are great ways to see how much progress a player is making in learning and growing in the game by discovering how they stack up against other players. It is also an opportunity to learn from other players in seeing a variety of strategies and styles of play. Like any other competitive activity, it is good to keep a healthy attitude and perspective, but playing in tournaments can reap many rewards.

Some players enjoy just playing in a random tournament for fun and experiencing the opportunity to learn and grow. Other players are more competitive and really get into tournaments, seeking to win and advance as far as they can go. They may have aspirations for earning master, grandmaster status within the U.S. Chess Federation through their rating. It is up to each individual to determine what kind of chess life they wish to have.

In Mississippi, there are many opportunities to participate in tournaments. The Mississippi Chess Association sponsors a state tournament each fall for adults and youth. Youth may also participate in the annual scholastic tournaments. These events are precursors to representing the state on the national level at many events.

Tournaments usually include registration fees and players choose what sections they wish to participate in, based on their skill level as determined by their U.S. Chess Federation rating. Tournaments may also include team play where individual players' scores are combined and calculated for overall scores. Prizes may include cash, trophies, plaques, medals, ribbons, and certificates.

**See calendar on page 7 and our website for more information!**

**[scottcountychessclub.org](http://scottcountychessclub.org)**

'A day  
without chess  
probably  
wouldn't kill  
you,  
but  
why risk  
it?'

