

VOL. 3 ISSUE 5 · JUNE 2024

CHESS JOURNAL

Official Newsletter of the Scott County Chess Club

Come join us on first Saturdays!

Our meetings are usually held on the **first Saturdays** of each month so everyone can plan ahead to join us.

The **NEXT regular meeting** will be held on June 1 at the Forest Public Library - 9 to 11 a.m. (210 S. Raleigh St.)

Everyone is welcome! All ages and skill levels
NO membership fee to participate



*Players may bring their own chess set if they have one.
We have boards and sets to use.
(provided by Friends of Forest Library group)*



scottcountychessclub



@scott_chess



This issue:

'Good Things'

PAGE 02

LakeFest 2024

PAGE 03

4th Roosevelt Classic

PAGE 04-06

Calendar

PAGE 07

Tournament information

PAGE 08

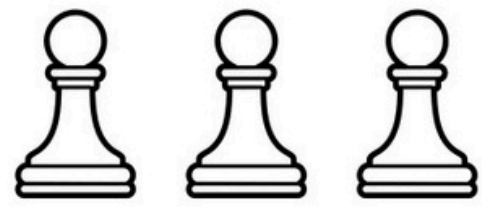
U.S. Chess Federation

PAGE 09

Benefits of Chess

PAGE 10

scottcountychessclub.org



Chess News Highlights

Chess is a 'Good Thing'

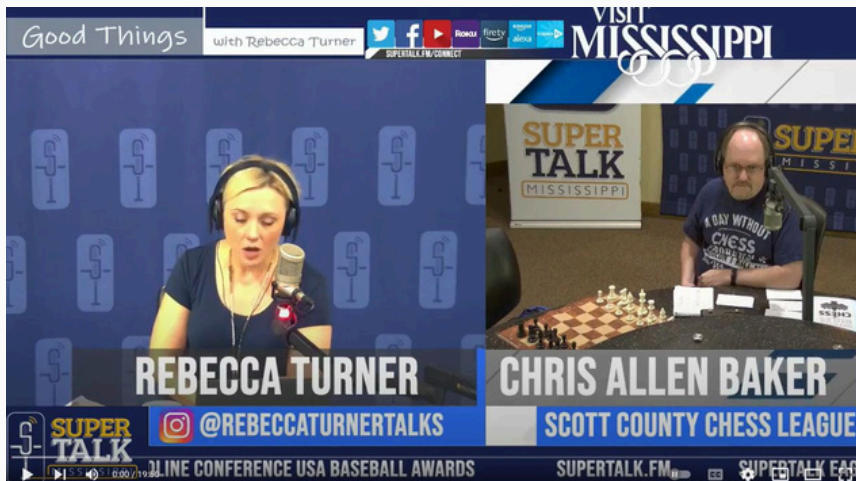
We'll be back on the airwaves this week

The Scott County Chess Club will appear again on "Good Things with Rebecca Turner" on the SuperTalk Mississippi Radio Network on **Thursday, May 30, at 2 p.m.**

In earlier appearances, we introduced the game to the SuperTalk audience and expanded from there. We talked about tournaments and chess in education. In this week's edition, we will have another special guest, a former four-time state chess champion, talking about the growth and continued expansion.

We have been blessed with great support from Rebecca's show in spreading the message of chess across Mississippi. You can hear and view past shows and other appearances through our website at the following address: <https://scottcountychessclub.org/video%2Fmedia-gallery>.

"Good Things" airs Mondays through Fridays from 2 until 3 p.m. and can be found at this address: <https://www.supertalk.fm/shows/goodthings/>

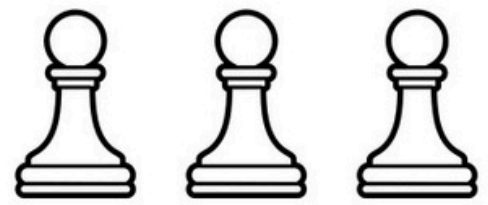


Sponsors

- Community Bank
- Cox Chevron
- Bank of Commerce (Morton)
- Tom Miles
- Priority One Bank
- French's Pharmacy
- Fountain ACE Hardware
- Bank of Forest
- Jack Batte and Sons Lumber Mill
- Joe McGee Construction

Partners

- Central MS Regional Library System
- Forest Public Library
- Friends of Forest Library
- U.S. Chess Federation
- MS Chess Association
- MS Scholastic Chess Association
- Capital City Chess Club
- Roosevelt State Park
- Forest Baptist Church
- Andrew Jackson Council - BSA
- Community Bank
- SwissSys
- MS Trophy
- Larchwood Designs
- MS Secretary of State
- Go Daddy (web hosting)
- Ingram Printing
- Scott County Times
- The Spirit of Morton
- SuperTalk MS
- WLBT - Studio 3
- Forest Chamber of Commerce
- Town of Lake
- City of Morton
- Town of Sebastopol
- King Registration
- Friends of Roosevelt State Park



Chess News Highlights

Lakefest 2024

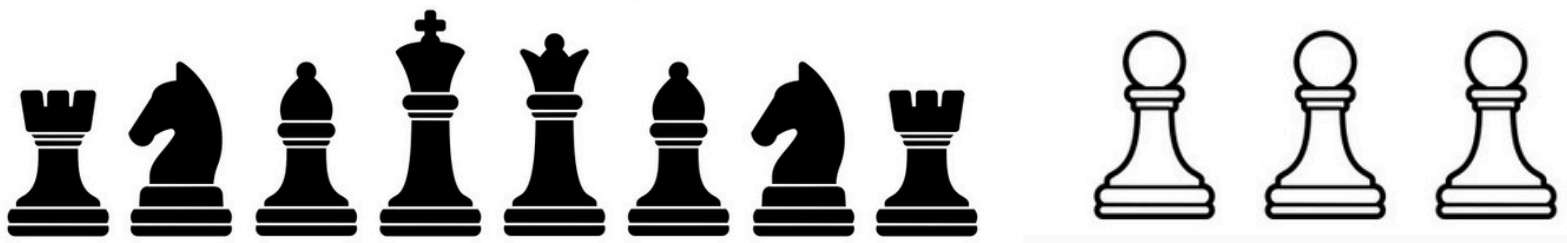
We had a great response in visitors to our display booth on May 11 during the 2024 LakeFest annual community festival in the Town of Lake. Many festival-goers stopped by to play chess and some who learned how to play for the first time.

Visitors ranged in age from young children to young adults, and senior adults. We look forward to hopefully seeing them at future chess events in Scott County.

Our next appearance will include participating in the annual Wing Dang Doodle in Forest in September.

'Chess is like life.
There are rewards for good choices, consequences for the bad choices.'





Scott County Chess Club sponsored tournament

4th annual Roosevelt Chess Classic

MORTON – The 4th annual **Roosevelt Chess Classic tournament** is set for **Saturday, November 9, 2024**, at Roosevelt State Park in Morton. This event will feature individuals and teams playing rated games.

Our first Roosevelt Classic in November 2021 attracted nearly 50 players from around Mississippi and we had players come from Louisiana, Tennessee, and Florida. In 2022, the tournament included 69 players from Mississippi and Louisiana. Last year's tournament attracted 59 players. Our combined turnout for the three Roosevelt Classic events and the spring Bienville event is now 309 players, including those returning and new players.

Registration is open! We are blessed to join forces with King Registration in offering an efficient and easy way to register for all of our events online.

Before we go any further, recognition goes to our past sponsors who generously donated funds to help make our first three tournaments successful. Most of, if not all, of them have expressed an interest to continue this year and we may even have some new sponsors added. This is a tremendous benefit because their contributions help keep the registration fees and expenses as low as possible which means funds left over after all bills are paid can be carried over to the next event. We really appreciate the support from the community and the businesses who have helped make these tournaments possible.

Roosevelt State Park, Alfreda-Harris Lodge, 2149 MS Highway 13, Morton

Exit 77 on Interstate 20

4 rounds – Swiss System – Game control: 45+5

active U.S. Chess Federation membership and notation **required; All games are rated**

INDIVIDUALS

Open (Cash - \$200 & trophy for 1st, \$100 & medal for 2nd; \$50 & medal for 3rd)

U1200 (Cash \$50 and trophy for 1st; medals for 2nd and 3rd)

U800 (Cash \$50 and trophy for 1st; medals for 2nd and 3rd)

U400 (Cash \$50 and trophy for 1st; medals for 2nd and 3rd)

TEAMS

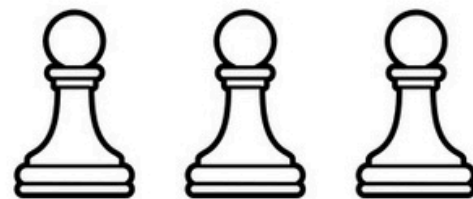
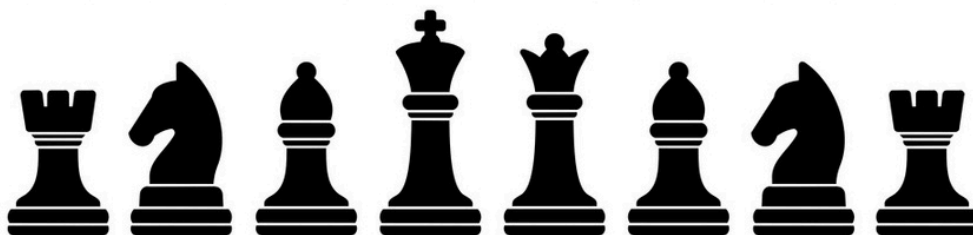
Players may form teams with any number of players above the minimum of four.

Each team player will compete in their respective section according to their rating, or play up. The four players with the best scores among their team members are used to calculate their team score.

The first place team will win championship and those four members will receive medals and \$100 collectively.

School sponsored teams are welcome as well as independent teams.

**** Please check your membership status with the U.S. Chess Federation to make sure your status is active and renew if necessary before registering.****



2024 Roosevelt Chess Classic - continued

REGISTRATION

Early Bird Discount: \$35 per player

Discount expires at 11:59 p.m. Saturday, Nov. 2. **Regular rate: \$40 per player begins**

Late and Onsite Registration: **\$45 per player begins 6 p.m. Friday, Nov. 8**

No registrations accepted after 9 a.m. Nov. 9

TEAM REGISTRATION

Players wishing to form teams should designate a team captain who will register members together in one transaction.

School teams - Coaches should register players in same transaction

Use coupon code TEAMROOSEVELT to receive \$2 discount per team member

All teams should be registered by noon, Friday, November 8;

Individuals' final deadline is 9 a.m. Nov. 9

*King Registration utilizes **PayPal, Venmo, and credit/debit card payment methods**. King Registration is preferred, but if different payment method is needed, please contact tournament director via email at scottcountychessclub@gmail.com. In email, provide name, active USCF #, desired section, desired payment method, Other electronic options include CashApp and Zelle. Paper check and cash on site methods are available. Make checks payable to the Scott County Chess Club.*

Schedule

Registration and Check-in 8 a.m. until 9 a.m.

All players must arrive by 9 a.m. so tournament can start on time.

Welcome and Briefing of Rules 9:15 a.m.

Round 1 – 9:30 a.m.

Round 2 – 11:30 a.m.

Round 3 - 2 p.m.

Round 4 - 3:30 p.m.

*Awards – To be presented after final round
(Please try to plan to stay for awards if possible)*

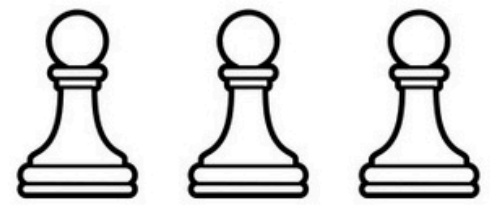
Byes due to inability to pair = 1.0

Requested byes = 0.5 (except Round 4; make requests before start of round)

Players who have byes in the same round may request to play extra rated game.

Tiebreakers Ties will be settled by SwissSys computer program. Cash prizes will be split per USCF rules.

Computer tiebreakers will determine trophy and medal recipients.



2024 Roosevelt Chess Classic - concluded

Important Tournament Notes

Roosevelt State Park enforces a daily admission fee for persons entering the park and this will apply to those attending our tournament. *Visitors will be given a hang tag to place on your rear view mirror. This will allow re-entry during the same day.*

The park admission fee is \$2 per person.

Children age 5 and under are allowed free.

- Registered players will receive a pre-event email on Wednesday prior to tournament including important last minute details.
- Everyone is encouraged to bring chairs for lounging between rounds, lobby seating is limited; an outdoor patio is available.
- Concession food options will be available on site. Cash and electronic payments (CashApp) accepted
- Skittles rooms will be available.
- If possible, please submit any requests for change of section by 6 p.m. Friday, Nov. 8.

More information is available on our website scottcountychessclub.org

Send questions or requests via email to scottcountychessclub@gmail.com





Chess Calendar

For more information about all listings:
see our website at scottcountychessclub.org

* **Scott County Chess Club** will hold a regular meeting

Saturday, June 1, 9-11 am, Public Library, Forest

This will be our regular meeting - everyone is welcome.

* **2nd Sunday Chess League**

Second Sunday each month, 2 p.m. - Food Court, Outlets of Mississippi, Pearl

* **Mississippi G/60 Championship**

Saturday, June 15 - Jackson Prep, Flowood

* **2nd annual J'Kennethon Smith Memorial Chess Tournament**

Saturday, July 6 - Food Court, Outlets of Mississippi, Pearl

* **Mississippi Team Championship**

Saturday, July 20 - Jackson Prep, Flowood

* **Mississippi Women's State Championship**

Saturday, September 14 - Details to be announced

* **Mississippi State Championship**

Saturday-Sunday, October 19-20 - CSpire Headquarters, Ridgeland

* **Roosevelt Chess Classic - Scott County Chess Club hosting**

Saturday, November 9 - Roosevelt State Park, Morton

* **Capital City Chess Club**

Tuesdays, 5:30 until 8:30 p.m. - Food Court, Outlets of Mississippi, Pearl

'I'm here
because I
was told
there would
be chess.'



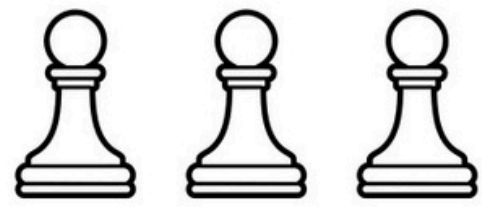
TOP TO BOTTOM CHESS:

* **Memphis Chess Club**

Weekly chess tournaments on Saturdays

* **Mississippi Coast Chess Club**

Thursdays- Newk's, Gulfport



Tournament action is all around

Many chess players are content to just play casually whenever the opportunity arises. This may include accepting a spontaneous invitation from a fellow chess player or attending a local chess club. However, there is another level to the game of chess - tournaments.

Tournaments are great ways to see how much progress a player is making in learning and growing in the game by discovering how they stack up against other players. It is also an opportunity to learn from other players in seeing a variety of strategies and styles of play. Like any other competitive activity, it is good to keep a healthy attitude and perspective, but playing in tournaments can reap many rewards.

Some players enjoy just playing in a random tournament for fun and experiencing the opportunity to learn and grow. Other players are more competitive and really get into tournaments, seeking to win and advance as far as they can go. They may have aspirations for earning master, grandmaster status within the U.S. Chess Federation through their rating. It is up to each individual to determine what kind of chess life they wish to have.

In Mississippi, there are many opportunities to participate in tournaments. The Mississippi Chess Association sponsors a state tournament each fall for adults and youth. Youth may also participate in the annual scholastic tournaments. These events are precursors to representing the state on the national level at many events.

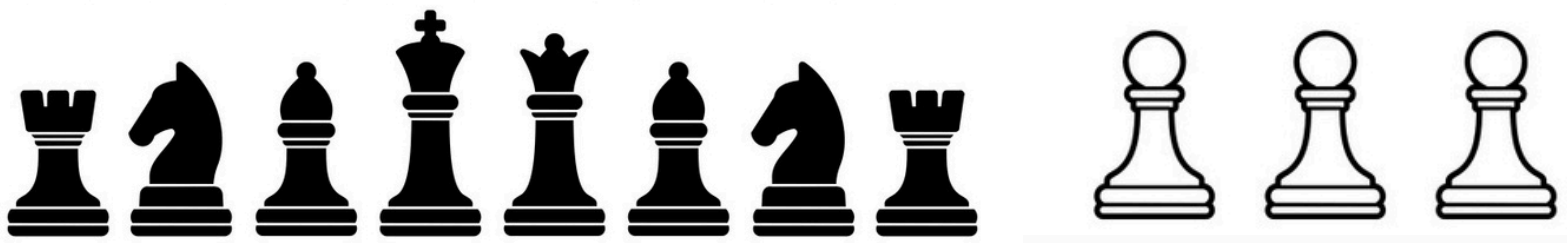
Tournaments usually include registration fees and players choose what sections they wish to participate in, based on their skill level as determined by their U.S. Chess Federation rating. Tournaments may also include team play where individual players' scores are combined and calculated for overall scores. Prizes may include cash, trophies, plaques, medals, ribbons, and certificates.

See calendar on page 7 and our website for more information!

scottcountychessclub.org

'A day without chess probably wouldn't kill you, but why risk it?'





U.S. Chess Federation

The U.S. Chess Federation, now based in St. Louis, Missouri, regulates and governs the game in the United States. It sanctions tournaments and officials as well as oversees the ratings system that measures players' skills.

Chess is recognized as an essential tool that promotes inclusiveness and benefits education, rehabilitation, recreation, and friendly competition.

US Chess Goals

- Expand the educational, social, recreational and rehabilitative applications of chess.
- Increase the visibility of chess on mainstream communications channels.
- Develop the depth and breadth of our partnerships.
- Use chess to increase opportunities for under-represented segments of society.
- Continuously improve internal operations and member services.

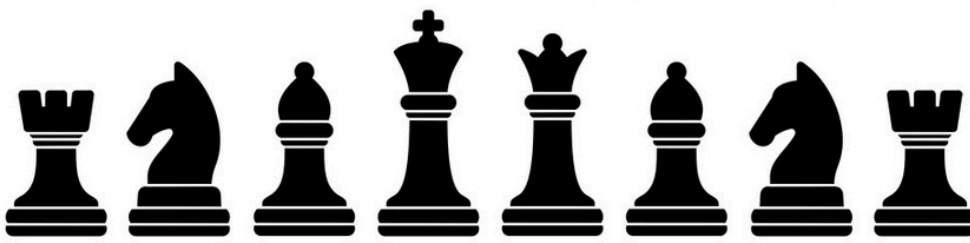
US Chess Core Values

- **Education.** We promote the transformative power of chess for lifelong personal growth.
- **Customer Service.** We endeavor to be responsive, adaptive and proactive in providing services to our customers.
- **Excellence.** We strive to be the best we can be as an organization and in service to the game.
- **Integrity.** We honor, preserve and promote fair play.
- **Inclusion.** We believe everyone has a seat at the chess table.
- **Love of the Game.** We embrace chess as a historic and iconic game, and we celebrate its history, growth and evolution in our activities and services.

Players must join the Federation to obtain a membership number which is required when registering for rated tournaments and other rated events. Tournament directors submit results to the Federation which impacts a player's rating.

For more information and to join, visit <https://new.uschess.org/join-us-chess>

USCF Membership makes for a great Birthday gift!!



Benefits of playing Chess

- **Improves concentration and memory.** According to studies done at the University of Memphis, playing chess significantly improves children’s visual memory, attention span, and spatial-reasoning ability.
- **Enhances reading and math skills.** With its focus on problem solving and move variables, chess can improve math skills. Studies show that chess improves reading skills as well.
- **Fosters logic, critical thinking, and creativity.** Chess favors the “if-then” thinker. “If I move here, then my opponent may move here, here, or even here.” That’s logic and critical thinking in action! Studies also show that chess boosts creativity, most dramatically in one specific area—originality. Playing chess helps unleash your originality, since it activates the right side of the brain, the side responsible for creativity.
- **Encourages and rewards hard work.** Chess offers immediate feedback. Lose your focus, lose a piece. Practice and study the strategies, win more games. In chess, you control your destiny.
- **Promotes brain growth.** Games like chess that challenge the brain actually stimulate the growth of bodies that send out signals from the brain’s neuron cells. Communication within the brain improves and becomes faster.
- **It exercises both sides of the brain.** A study indicated that when chess players were asked to identify chess positions and geometric shapes, both the left and right hemispheres of the brain became highly active.
- **Raises your IQ.** At least one scientific study has shown that playing the game can actually raise a person’s IQ.
- **Helps prevent Alzheimer’s.** A study found that people over 75 who engage in brain-games like chess are less likely to develop dementia than their non-board-game-playing peers.
- **Increases problem-solving skills.** Chess requires fast thinking and problem-solving on the fly because your opponent is constantly changing the parameters.
- **Teaches planning and foresight.** One of the last parts of the brain to develop during adolescence is the area responsible for judgment, planning and self-control. Chess helps this area’s development and helps teenagers make better decisions in all areas of life.
- **Optimizes memory improvement.** Playing chess improves your memory, mainly because of the complex rules you have to remember, as well as the memory recall needed when trying to avoid previous mistakes or remembering a certain opponent’s playing style. Many chess players have exceptional memory performance and recall.
- **Improves recovery from stroke or disability.** Chess develops fine motor skills in individuals who have disability or have suffered a stroke or other physically debilitating accident. This form of rehabilitation requires the motion of chess pieces in different directions (forward, backward, diagonally forward motion, diagonally backward motion), which can help develop and fine tune a patient’s motor skills, while the mental effort required to play the game can improve cognitive and communication skills. Playing can also stimulate deep concentration and calm, helping to center and relax patients who are experiencing different degrees of anxiety.

Most of all - Chess is FUN!

'Life is full of important choices.'

'In chess, there are no losers.'

Either you win or you learn ...

sometimes both.'