



RUTGERS UNIVERSITY
GRADUATE SCHOOL OF APPLIED AND PROFESSIONAL PSYCHOLOGY
AND THE ALUMNI ORGANIZATION

45th Anniversary Gala

Celebrating 45 Years of Excellence | 1974-2019

OCTOBER 26, 2019
THE HELDRICH HOTEL
NEW BRUNSWICK, NEW JERSEY

Gala Committee Members

Chair

Peter DeNigris, Psy.D. (Clinical, 2004)
President, GSAPP Alumni Organization

Committee Members

Amanda Morales, Psy.D. (Clinical, 2015)
Vice President, GSAPP Alumni
Organization

Linda Tamm, Psy.D. (Clinical, 1998)
Secretary, GSAPP Alumni Organization

Jonathan Pastor, Psy.D. (Clinical, 2002)
Treasurer, GSAPP Alumni Organization

Perry Bell, Psy.D. (School, 2014)

Joseph Conerty, Psy.D. (Clinical, 2013)

Rosalind Dorlen, Psy.D. (Clinical, 1977)

Liza Franklin (2nd Year, Clinical)

Lewis Gantwerk, Psy.D. (School, 1984)

Bonnie Gordic, Psy.D. (Clinical, 2014)

Jane Hochberg, Psy.D. (Clinical, 1976)

Tamara Latawiec, Psy.D. (Clinical, 2008)

Sharon Ryan Montgomery, Psy.D. (School, 1982)

Planning Team

Francine Conway, Ph.D.
Dean and Distinguished Professor

Lara Delmolino Gatley, Ph.D., BCBA-D
Clinical Professor and Associate Dean

Nayland Smith, MBA
Chief Business and Strategy Officer

Ricki Arversen
Jessica Benas
Marlene Brown
Compton Chester
Aruna Chadda
Djenaba Figueroa
Robin Hussey
Noelle Jensen
Kitman Kan

Sylvia Krieger
Adam Lewka
Alice Liou
Kristen Riley
Wei Shi
Julie Skorny
Sharon Slinksy
Kim Spinelli
Usha Yerramilly

Special Thanks

President Robert L. Barchi, Chancellor Christopher Molloy, Nancy Boyd Franklin,
Dorothy Cantor, Rosalind Dorlen, Susan Forman, Graham Hartke, Richard McCormick,
Stanley Messer, David Siegman, Stuart Singer, Gemma Stern, Lucy Sant'Anna Takagi,
Madeline White

RUTGERS UNIVERSITY
GRADUATE SCHOOL OF APPLIED AND PROFESSIONAL PSYCHOLOGY
AND THE ALUMNI ORGANIZATION

45th Anniversary Gala

Evening Program

WELCOME

Emcees

Dr. Lewis Gantwerk, GSAPP '84

Dr. Jeffrey Ng, GSAPP '03

REMARKS

Dr. Francine Conway, Dean, GSAPP

Dr. Christopher Molloy, Chancellor, Rutgers University

Dr. Peter DeNigris, GSAPP '04, President, GSAPP Alumni Organization

AWARDS

Distinguished Professional Contributions to Clinical Psychology

Dr. Bonnie Markham

Distinguished Teacher Award in School Psychology

Dr. Kenneth Schneider

Legacy Award

Dr. Stanley Messer

CLOSING REMARKS

Toast to the Next Chapter

Dr. Francine Conway, Dean, GSAPP

DINNER & DANCING

Silver Arrow Band

Emcees

Dr. Jeffrey Ng, Psy.D.

Dr. Jeffrey Ng is a licensed clinical psychologist and the Director for Counseling and Psychological Services at Fordham University. He is currently the co-chair for the Association for University and College Counseling Center Directors' Elements of Excellence Committee. Dr. Ng received his doctorate in clinical psychology from Rutgers University and his bachelors in human development from Cornell University. Prior to joining Fordham in 2008, Dr. Ng worked at New York - Presbyterian Hospital and Columbia University's Mailman School of Public Health. Dr. Ng's professional interests include college student mental health, multicultural and liberation psychology, psychodynamic psychotherapy, mindfulness based treatments, interpersonal neurobiology, sexuality, masculinity, and working with young adults, men, and historically underserved and marginalized populations. His treatment approach is informed by phenomenological, multicultural, community and Buddhist psychology, and privileges depth, meaning, context, subjectivity, and social and restorative justice in the therapeutic process. Dr. Ng is fluent in Spanish and Cantonese, is an avid sports fan, and lives in Brooklyn, NY with his wife and 15-year-old son.



Lewis Gantwerk, Psy.D.

After a rewarding career in New Jersey's public schools, Dr. Lewis Gantwerk came to the Graduate School of Applied and Professional Psychology as a student, and then spent the next three decades helping to shape the hands-on training platform at the Center for Applied Psychology, creating a wide range of opportunities for students to practice. As a former GSAPP student, Dr. Gantwerk was especially well known for his focus on student's education and training. He served on more than 100 dissertation committees during his tenure and represented the School's perspective on a number of University-wide initiatives. In 2012, the University honored him with the Ernest E. McMahon Class of 1930 Award for his significant and creative contribution to the extension of the educational resources of the University to the people of New Jersey through extramural programs. Dr. Gantwerk was also the winner of the coveted Peterson Prize at GSAPP for his lifetime of achievement.





Dear GSAPP Alumni, Faculty, Staff, Students and Friends,

For 45 years, we have upheld the Graduate School of Applied and Professional Psychology's (GSAPP) history of excellence in training, research and service. I could not be more proud of what we have achieved.

Our distinguished faculty, staff, students and over 1,200 alumni continue to improve our communities here in New Jersey and around the world, with a focus on serving the underserved. This is hard work, and we persist. Though we are many, with varied focuses, we are "one GSAPP," with a shared mission and shared standards of excellence. I am honored to be a part of this impactful and thriving community.

At GSAPP, our students receive outstanding scholarly and applied training to go out into the world and, despite many barriers, enact real change. Our unique program centers have created specialty practitioners and have engaged community partners. We are working to transform behavioral health and improve clinical care by using cutting-edge technology and innovations, and our preeminent faculty and staff lead the way. We are creating the new generation of mental-health professionals.

I am thrilled to continue our journey of excellence in training, research, and serving the underserved around the world. We are small, but mighty! We will continue to better our communities and continue our tradition of excellence, together.

Respectfully,

Francine Conway, PhD

Dean & Distinguished Professor

Graduate School of Applied and Professional Psychology



STATE OF NEW JERSEY
OFFICE OF THE GOVERNOR
P.O. BOX 001
TRENTON
08625
(609) 292-6000

PHILIP D. MURPHY
GOVERNOR

October 26, 2019

Dear Friends,

On behalf of the state of New Jersey, I am pleased to welcome you all to the Rutgers Graduate School of Applied and Professional Psychology's 45th Anniversary Gala.

The Rutgers Graduate School of Applied and Professional Psychology leads the nation in providing the highest quality of doctoral education and training in the field of psychology. Since the school's founding in 1974, the GSAPP program has focused on its goal to prepare well-educated, qualified, and competent direct-service psychologists dedicated to serving the community. Academic excellence, a commitment to social justice, an understanding of diversity, and a knowledge of generation and dissemination using contemporary research approaches, are the core values that the program encourages throughout its learning environment, centers, and clinics.

As Governor, I commend Dean Francine Conway and the Graduate School of Applied and Professional Psychology for unwavering commitment and dedication to providing the best education for future psychologists across the Nation.

Best wishes for continued success and an enjoyable event.

My very best,

A handwritten signature in blue ink, reading "Phil Murphy".

Philip D. Murphy
Governor



RUTGERS

Robert L. Barchi, President

October 26, 2019

Francine Conway, Ph.D.
Dean, Graduate School of Applied and Professional Psychology
Rutgers, The State University of New Jersey
152 Frelinghuysen Road
Piscataway, NJ 08854

Dear Dean Conway,

I am pleased to send my congratulations to you and the entire Graduate School of Applied and Professional Psychology (GSAPP) community as you celebrate 45 years of academic success and meaningful service to the people of New Jersey.

Let me also recognize the three individuals you are honoring this evening—dedicated alumna Bonnie Markham, professor emeritus Kenneth Schneider, and longtime dean Stanley Messer—for their exceptional contributions to the history of GSAPP.

I would also like to thank your distinguished guest of honor, Marlene Brandt, for her generosity in helping to transform mental health care for New Jersey's youth in partnership with GSAPP and University Behavioral Health Care. We are excited that her gift will provide training and research opportunities for our students and attract top faculty to Rutgers.

The achievements of faculty, students, alumni, and staff of the school have brought pride to the University. As increasing numbers of individuals and families are seeking assistance across the broad spectrum of mental health issues, your research, education, training, and outreach are enabling us to gain a deeper understanding of their causes and best treatments.

In appreciation of all the vital work you and your colleagues do, and with admiration for the school's longstanding commitment to diversity, I wish GSAPP continued excellence and achievement in the years to come.

Again, congratulations and happy anniversary!

Sincerely,

Robert Barchi



GSAPP ALUMNI ORGANIZATION

gsapp.rutgers.edu/alumni-friends

October 26, 2019

Francine Conway, Ph.D.
Dean and Distinguished Professor
The Graduate School of Applied and Professional Psychology
Rutgers, The State University of New Jersey
152 Frelinghuysen Road
Piscataway, New Jersey 08854

Dear Dr. Conway:

On behalf of the Alumni Organization of the Graduate School of Applied and Professional Psychology, please accept my sincerest congratulations on the 45th anniversary of our prestigious graduate school. It has been our privilege to work with you over the past three years since your appointment as Dean began.

As you know, GSAPP truly is the gold standard of professional psychology schools in the country. Our degrees are respected internationally; those within our field know that alumni from GSAPP have had superior training and are well-versed in cutting edge research and clinical practice. To date, we have over 1,200 alumni, who are working globally to enhance the well-being of individuals, families, schools, organizations, and communities. The outstanding work that they are doing would not be possible without the preeminent education and training that they received from GSAPP. Alumni, such as Bonnie Markham, Ph.D., Psy.D., who is one of our honorees tonight, have become outstanding leaders in the field of Psychology and are proud representations of what a GSAPP education entails. This high caliber training can only come from distinguished faculty members, such as Stanley Messer, Ph.D., and Kenneth Schneider, Ph.D., whom we also honor tonight for the indelible marks that they have left on GSAPP, their students, and the profession of Psychology. Students and alumni receive a wealth of support and encouragement from the faculty and staff at GSAPP to pursue their dreams and shape their careers in such a way that allows them to aid the most vulnerable in our world. A GSAPP education is rich in diversity and underscores the importance of assisting the underserved. Students leave GSAPP with a sense of pride in their graduate school, which remains forever with them as alumni.

We are honored to celebrate this most special occasion with you. We look forward to a continued partnership with you to further advance the training of our students and to enhance the overall prestige of our graduate school. Ultimately, this will continue to allow GSAPP alumni to positively influence the communities in which they work.

With deepest gratitude,

Peter DeNigris, Psy.D.
President, GSAPP Alumni Organization



AMERICAN
PSYCHOLOGICAL
ASSOCIATION

October 26, 2019

Dr. Francine Conway
Dean, Graduate School of Applied and Professional Psychology
Rutgers, The State University of New Jersey
152 Frelinghuysen Road
Busch Campus
Piscataway, NJ 08854

Dear Dean Conway,

We are writing on behalf of the American Psychological Association (APA) to express our heartfelt congratulations to the Rutgers-Graduate School of Applied and Professional Psychology's (GSAPP) on your 45 years of excellence in teaching, research, and service in professional psychology. As the largest scientific and professional organization of psychologists in the United States, APA is proud to count many of your students, alumni, and faculty among our members in their varied roles as researchers, educators, clinicians, consultants, and students.

APA recognizes your commitment to providing quality training in psychology that integrates science and practice to prepare your students to serve the community with a focus on underserved populations. GSAPP's core values of academic excellence, social justice, diversity, and knowledge generation and dissemination align closely with those of APA. Your focus on clinical training prepares your graduates with the competencies necessary to provide quality psychological services. And your continuing education and professional development activities help to equip psychologists with the knowledge and skills to better meet our societal challenges. The strong commitment to diversity across multiple domains ensures your students are well prepared to deliver a wide range of services and to do so with a respect for, and understanding of, individual differences and with cultural humility. GSAPP's faculty are also active researchers, fostering graduates who are both practitioners and scholars.

Your outstanding faculty, your active alumni, and your diverse student body are noteworthy and distinguish GSAPP. We wish you continued success in your efforts to prepare the future psychology workforce to meet the needs of our diverse society.

Once again, congratulations!

Regards,

A handwritten signature in black ink, reading "Rosie Phillips Davis".

Rosie Phillips Davis, PhD, ABPP
President

A handwritten signature in black ink, reading "Arthur C. Evans, Jr.".

Arthur C. Evans, Jr., PhD
Chief Executive Officer

750 First Street, NE
Washington, DC 20002-4242
(202) 336-5500
(202) 336-6123 TDD



Please Recycle

www.apa.org

October 26, 2019

Francine Conway, Ph.D., Dean
Dean & Distinguished Professor
Graduate School of Applied and Professional Psychology
Rutgers, The State University of New Jersey
152 Frelinghuysen Road
Piscataway, NJ 08854

Dear Dean Conway:

The National Association of School Psychologists (NASP) is very pleased to wish the Graduate School of Applied and Professional Psychology (GSAPP) at Rutgers University a very happy 45th anniversary.

Congratulations on 45 years of preparing future professionals to provide exemplary school psychological services that are empirically-based, culturally sensitive, collaborative and coordinated with other school practices! Your students and alumni make a difference in the lives of children and youth, thereby helping NASP achieve our goal of a world where all children thrive at home, school and in life. We also are honored and greatly appreciative that many of your students, faculty and alumni over the years have been key leaders of our association.

Thank you for your significant impact on the practice and advancement of school psychology.

With best wishes and sincere congratulations,



Leslie Paige, EdS
NASP President, 2019-20



Kathleen Minke, PhD, NCSP
NASP Executive Director



500 Horizon Drive
Suite 530
Robbinsville, NJ 08691

800.4.AUTISM
609.588.8200
609.588.8858 (fax)

www.autismnj.org

October 26, 2019

Francine Conway, Ph.D.
Dean and Distinguished Professor
Rutgers – Graduate School of Applied and Professional Psychology (GSAPP)
152 Frelinghuysen Road
Piscataway, NJ 08854-8020

Dear Dean Conway,

Congratulations on 45 years of scholarship, service, and training generations of psychologists to improve the lives of those in need of psychological treatment, especially individuals with autism. GSAPP's pioneering work to improve the diagnosis, assessment, and treatment of autism has conferred immeasurable benefit to both families struggling with autism and students learning how to treat autism and support families.

As an undergraduate student at Rutgers College ('95), I saw firsthand how psychological principles and practices based in applied behavior analysis could teach young children with autism to communicate and play with their classmates and help adolescents with autism learn employable skills. Now, as a psychologist and Executive Director of Autism New Jersey, I use my training in treatment evaluation and family support every day to educate those who call our helpline, plan conferences that feature evidence-based practices, and conduct public policy work that will increase funding and create meaningful changes in service delivery for individuals with autism throughout the state.

It is incredibly rewarding to see GSAPP carry on the tradition of training the next generation of psychologists and behavior analysts to address the needs of the autism community. We have enjoyed years of productive and impactful partnerships with Drs. Lara Delmolino, Robert LaRue, Christopher Manente, and Kate Fiske and look forward to expanding our impact in collaboration with Drs. Wayne Fisher, Cathleen Piazza, SungWoo Khang, and Brian Greer. Through your leadership, the deepening talent that GSAPP offers NJ's autism community and, in turn, the global autism community, is unparalleled.

As Walter Zahorodny hypothesized in a paper on the high prevalence in New Jersey, our state's mature network of advocacy and service organizations could lead to more robust identification and effective treatment. GSAPP is one of the driving forces behind that mature network. On behalf of New Jersey's autism community, we offer you our most heartfelt gratitude.

Sincerely,

Suzanne Buchanan, Psy.D., BCBA-D



NJ Center for Tourette Syndrome

AND ASSOCIATED DISORDERS, INC.

Collaborative Partnerships for the Tourette Syndrome Community

October 26, 2019

Dr. Francine Conway
Dean - Graduate School of Applied and Professional Psychology
Rutgers University
Piscataway, New Jersey 08854

Dear Dr. Conway:

The NJ Center for Tourette Syndrome and Associated Disorders has had the pleasure of supporting and working closely with Rutgers University students and staff in establishing the NJCTS Tourette Syndrome Clinic at the Graduate School of Applied and Professional Psychology. For the past 15 years this unique collaboration has provided a state of the art training experience for students, who in turn provide high quality assessment and psychotherapeutic services to children, adults and families living with Tourette Syndrome, tics and associated mental health disorders. The Clinic, the only one of its kind in the nation, has become an integral part of the support NJCTS offers its families. Congratulations to GSAPP and Rutgers University for your outstanding education, training and service! We are honored to have played a part in your 45 year history and look forward to continuing our collaboration for many years to come.

Sincerely,

Faith W. Rice
Executive Director
NJ Center for Tourette Syndrome & Associated Disorders, Inc.



NEW JERSEY PSYCHOLOGICAL ASSOCIATION

October 26, 2019

Francine Conway, Ph.D.
Dean, Graduate School of Applied and Professional Psychology
Rutgers, The State University of New Jersey
152 Frelinghuysen Road
Piscataway, New Jersey 08854

Dear Dean Conway:

The New Jersey Psychological Association (NJPA) wishes to extend heartfelt congratulations to the Graduate School of Applied and Professional Psychology on the significant milestone of its 45th anniversary. GSAPP's contribution to psychological practice in the state of New Jersey is beyond measure. In recognizing this very important occasion, we are filled with gratitude for NJPA's longstanding relationship with GSAPP.

NJPA has benefitted tremendously from our collaboration with GSAPP, and most importantly by extension, so have the people of New Jersey. Since the beginning, GSAPP graduates have been well known for the excellence of their training and scholarship, and their willingness to serve in leadership roles. GSAPP and its alumni have always made and continue to make a critical impact on our profession.

Through their leadership roles within NJPA, GSAPP alumni have played an enormous role in shaping the profession of psychology in New Jersey. They have worked to advocate for important legislative priorities, they have contributed to the education and mentorship of psychologists, and the dissemination of psychological knowledge via their research programs.

This is a time of tremendous change within professional psychology, and the contributions of GSAPP and its alumni are now more important than ever. With the energy and drive of GSAPP graduates, we can address many of the challenges facing our profession. We can promote better access to mental healthcare, we can train psychologists in effective models of integrated care, we can advocate in the legislature for an easier path to licensure, so graduates can stay in New Jersey, and we can engage in practices that support the needs of the diverse population of our state.

GSAPP has a rich history of excellence developing professional psychologists, and NJPA looks forward with high expectations to the next generation of alumni to partner with in efforts to promote the welfare and psychological health of the people of New Jersey.

Warmest Regards,

Morgan J. Murray, Ph.D.
2019 President New Jersey Psychological Association

Event Honoree

Bonnie Markham, Ph.D., Psy.D. **Recipient of the Distinguished Professional** **Contributions to Clinical Psychology Award**



Dr. Bonnie Markham earned her doctorate in social psychology from Columbia University. During her early career she taught at Douglass College; did research on early childhood education at New York University; and program evaluation, research and teaching at UMDNJ-Robert Wood Johnson Medical School, where she remains on the adjunct faculty. Since earning a Psy.D. from GSAPP she has been in independent practice and has served her school as a clinical supervisor, president of the AO, and co-chair of the multimillion-dollar capital campaign.

Dr. Markham was on the planning committee for the 25th and 30th GSAPP anniversaries, facilitated the development of an online alumni directory and interactive listserv, and a mentoring program for new graduates. She chaired the creation of a commemorative booklet and archive chronicling the then 30-year history of GSAPP and the 75 years of the Psychological Clinic. In 2009, she established an endowed fund to support clinical psychology graduate students in the dissertation phase of their training. In 2010, she received the Grace K. Smith Award for Meritorious Service to the Alumni Organization.

From 2004-2007, Dr. Markham served as GSAPP Alumni Organization representative to the RU Alumni Federation for which she received the Block R Award in 2009. She has always been active in professional community organizations and served as the first psychologist to chair a community mental health board in NJ. While having many volunteer and leadership roles, her particular interest is in the financial management of not-for-profit groups. For that work, APA Division 42, independent Practice, named her Distinguished Psychologist of the Year, 2005.

She served two terms (2011-2013, 2014-2016) as Treasurer of the American Psychological Association and chair of its Finance Committee. Other past service includes treasurer of NJPA and several APA Divisions as well member of the Board of Directors and Council Leadership Team.

Event Honoree

Kenneth Schneider, Ph.D. **Recipient of the Distinguished** **Teacher Award in School Psychology**



Dr. Schneider received his doctorate in school and educational psychology at Ferkauf Graduate School of Yeshiva University.

Dr. Schneider's first professional position was as a school psychologist, and then he became assistant professor at Seton Hall University, where he served as the graduate program director of special education, learning disabilities and school psychology. He joined the School Psychology department of GSAPP in 1976, continuing his interests in special education, learning disability and school psychology.

Dr. Schneider became the chair of the Department of Applied Psychology, which had two programs at the time - school and organizational psychology.

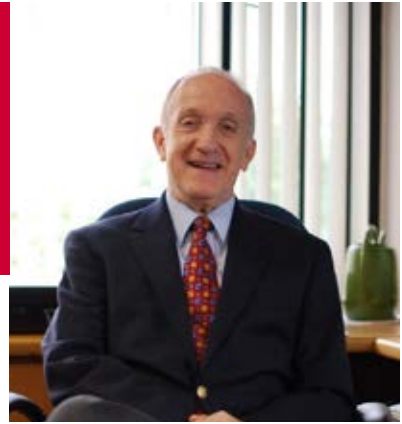
He received teaching awards from the students in the school psychology program, and served on many professional committees.

Dr. Schneider and Jody Phillips received a grant from the Federal Department of Education to provide assessments and accommodations for Rutgers University students who had been previously diagnosed with a learning disorder in grade school, but were seeking services at the university level. This was one of the first university-based assessment services for students with disabilities, which are now common at most universities.

Dr. Schneider retired from his full-time position at GSAPP in 2006 but has remained an active retiree, continuing to teach the Cognitive Assessment and Exceptional Children courses. He also is the doctoral level supervisor for the assessment program in the Psychological Services Center of GSAPP that offers assessments for Rutgers University students as well as members of the communities that are served by the PSC.

Event Honoree

Stanley Messer, Ph.D. **Recipient of the Legacy Award**



Dr. Stanley B. Messer is Distinguished Professor Emeritus and former Dean (2001-2016) of the Graduate School of Applied and Professional Psychology (GSAPP).

He earned his MA and PhD at Harvard University. Prior to becoming dean, he was chair of the Department of Clinical Psychology (1992-2001) at GSAPP. His scholarly career has focused on the application of psychodynamic theory and research to the brief and integrative therapies at the clinical, theoretical, and philosophical levels.

He has also contributed to the debate on evidence-based practice. Two of his most recent co-edited volumes are *Case Studies Within Psychotherapy Trials: Integrating Qualitative and Quantitative Methods*, (2017) and *Essential Psychotherapies: Theory and Practice* (4th ed., in press).

Dr. Messer is featured in an American Psychological Association (APA) video, *Brief Dynamic Therapy*. He has lectured and given invited workshops in several international venues, including Argentina, Brazil, China, Israel, Norway, and Poland.

As a licensed and practicing psychologist, Dr. Messer conducts psychotherapy and clinical assessments. He is an APA Fellow of the Society of Clinical Psychology, the Division of Theoretical and Philosophical Psychology, and the Society for Advancement of Psychotherapy. He is immediate past President of the International Society for the Exploration of Psychotherapy Integration and continues to serve on its executive board.

Dr. Messer is an Associate Editor of the online journal *Pragmatic Case Studies in Psychotherapy*, and is on the editorial board of several other journals. He is coauthor of the volume *Models of Brief Psychodynamic Therapy: A Comparative Approach*; coeditor of and contributor to the volumes *Psychoanalytic Therapy and Behavior Therapy: Is Integration Possible?*; *Hermeneutics and Psychological Theory*; *History of Psychotherapy: A Century of Change*; and *Theories of Psychotherapy: Origins and Evolution*. The Chicago School of Professional Psychology awarded Dr. Messer an honorary doctorate in 2017.



Rutgers Graduate School of Applied and Professional Psychology

Rutgers University's Graduate School of Applied and Professional Psychology (GSAPP) provides the nation's highest quality doctoral education and training, developing outstanding practitioners and fostering personal leadership to advance the practice and field of professional psychology. Since the school's founding in 1974, GSAPP has become the "gold standard" in the education and training of qualified and competent direct-service psychologists and applied research scientists. GSAPP offers a Master of Applied Psychology (MAP), launched in Fall 2018, which provides foundational knowledge, education and training on the scientific basis of applied psychology.

GSAPP is highly ranked by multiple notable metrics and offers two distinguished programs: the Clinical Psychology PsyD and the School Psychology PsyD. Students refine their clinical and assessment skills through faculty-led clinics in our Center for Psychological Services, and the community receives effective, specialized, low-cost mental health services and training. GSAPP's School Psychology Program delivers critical services in primarily high-poverty NJ schools. Impressively, students in both programs have provided over 90,000 hours of intervention and 13,000 hours of assessment to clients in NJ, NY and other nearby states.

Through these endeavors and our affiliated partnerships with local agencies, GSAPP fulfills a vital public service commitment while providing the hands-on experience that is a hallmark of our program.



Center for Psychological Services

Building on the legacy of commitment and caring instituted by its founders, Drs. Henry and Anna Starr, the Psychological Clinic celebrates its 90th year and has been a part of the GSAPP family since its inception. The Clinic continues to provide a wide range of services, including psychological assessment and treatment for a variety of mental health disorders and behavioral challenges.

Our expanded Assessment Clinic works closely with Rutgers' Office of Disability Services to provide high-caliber assessment services to University students. However, the Clinic is just one part of the broader Center for Psychological Services (CPS). There are now additional clinics under the CPS umbrella that offer treatments for various mental health disorders and specific populations, including four faculty-led, research-oriented clinics, as well as other specialty clinics.

CPS is one of the largest university training clinics in the country. Services are provided by Clinical and School Psychology doctoral students and Clinical Psychology PhD students at a significantly reduced cost to clients. Our clinics include the: ADHD Clinic, Anxiety Disorders Clinic, Dialectical Behavior Therapy Program, Foster Care Counseling Project (FCCP), Group Psychotherapy Services, NJ Couples Clinic, The LifeSPAN Lab, The Tourette Syndrome Clinic, Women Helping Women and the Youth Anxiety and Depression Clinic.



Center for Applied Psychology

With strategic community, state and national partners, the Center for Applied Psychology (CAP) provides innovative educational and training experiences for GSAPP graduate students under the supervision of distinguished faculty and licensed field psychologists. These experts come together with our students to develop comprehensive research-based training, evaluation and treatment programs to address the needs of those affected by mental health conditions and challenges. Through federal and private foundation grants and individual donors, CAP provides services directly to underserved populations and communities and invaluable training opportunities that prepare our students to be leaders of practice, policy and research.

Recently, GSAPP launched CAP - Research and Innovations, a one-of-a-kind, symbiotic partnership. CAPr, the team's research division, is dedicated to driving new exploration in mental health by building an enterprise underpinned by science teams. CAPr will develop and pursue research opportunities that tackle society's foremost challenges and shape the industry at large. CApi, the Innovation Lab, is pushing the boundaries of mental healthcare dissemination and the delivery of mental health education. Fueled by CAPr's research, CApi will drive global exposure for Rutgers and GSAPP through media, innovative digital technology, product development, corporate engagement and financial solutions.



Center of Alcohol and Substance Use Studies

For nearly a century, Rutgers' Center of Alcohol and Substance Use Studies (CAS) has played a pivotal role in addiction research, science, education and policy. CAS, a Center house within GSAPP, is a multidisciplinary institute dedicated to substance use research, education and training. The Center shares its expertise on alcohol and other substance-use topics with the public through local, national and international media outlets.

Our NIH-supported research programs seek to understand how mind, body and brain processes impact alcohol and other substance-use behaviors. The CAS Addiction Education program is the nation's oldest substance-use training program, providing opportunities for professional development in substance-use prevention, behavioral health and treatment best practices since 1962.

The program promotes the recognition of substance-use disorders as a major public health concern, maintains a strong focus on special populations, understands the connection with overall mental health, and addresses the need to reduce stigma and connect practitioners with empirically-supported field advancements.



Douglass Developmental Disabilities Center

The Douglass Developmental Disabilities Center (DDDC) has served children, adults and families affected by Autism Spectrum Disorders (ASD) since 1972.

The DDDC recognizes our responsibility to work collaboratively with the families of the children and adults we serve, and with the agencies that fund their treatment.

DDDC's commitment includes the education of undergraduate and graduate students and the dissemination of knowledge through research, training and consultative services.

The DDDC also provides information about the treatment and education of people with ASDs to the professional community and the general public.

Services include: the School and Adult Day Programs; Program Evaluations and Functional Behavior Assessments; Workshops/Group and Parent Trainings; Public School, Other Agency and Home-Based Consultations; Research in Applied Behavior Analysis (ABA) and the Treatment of ASD; and Education/Training for University Students and Professionals.



The Rutgers Center for Adult Autism Services

The Rutgers Center for Adult Autism Services (RCAAS) provides a model of what adults with ASD can accomplish if given the resources and opportunity for employment and community-based inclusion. The RCAAS serves individuals with a diverse range of support needs, and 100% of program participants are competitively employed in a variety of jobs at Rutgers University.

When not at work, program participants have access to all of the amenities and facilities at Rutgers, including the largest university-based bus system in the country, which ensures that they can get anywhere they want to go.

The RCAAS is also an active training site for GSAPP students at all levels and across a variety of professional disciplines. In addition, a senior team of prominent researchers, including the world's first Endowed Chair in Adult Autism, has been assembled to identify and disseminate the practices that are most effective for ensuring the best outcomes for adults on the spectrum across the areas of employment, transportation, socialization, recreation and independent living.

PLATINUM SPONSOR

ROSALIND S. DORLEN

Congratulates
2019 GSAPP
45th Anniversary Gala Honorees

Bonnie Markham, PhD, PsyD

Stanley Messer, PhD

Kenneth Schneider, PhD



Congratulations to the honorees, deans, founders, faculty and students for creating a distinguished professional school of excellence.

- Rosalind S. Dorlen, PsyD., ABPP
(First Class, 1974)



Congratulations GSAPP on 45 years

CAROLE SALVADOR
(1982)

&

DIANA SALVADOR
(2002)



With admiration and thanks to the
Graduate School of Applied and
Professional Psychology for
45 years of outstanding service
to Rutgers University and beyond

and congratulations to the honorees
STAN MESSER
KENNETH SCHNEIDER
AND BONNIE MARKHAM

ABOUT THE KARMA FOUNDATION

Established in 1996 to provide grants in support of
organizations engaged in activities and programs
in the areas of Arts & Culture, Autism, Education &
Literacy, Health & Human Services and
Development & Enrichment of Jewish Life

Sharon Karmazin – President
Dina Karmazin Elkins – Executive Director
Craig Karmazin – Trustee



RUTGERS

Graduate School of Applied
and Professional Psychology

WITH DEEP GRATITUDE TO
GSAPP AND RUTGERS UNIVERSITY
FOR PROVIDING ME WITH
A HIGHLY SATISFYING AND FULFILLING
CAREER OF TEACHING, SCHOLARSHIP,
CLINICAL & DISSERTATION SUPERVISION,
AND ADMINISTRATIVE LEADERSHIP



STANLEY B. MESSER, PH.D.

FACULTY MEMBER, GSAPP, 1974-2019

CHAIR, CLINICAL PSYCHOLOGY, 1992-2001

DEAN, 2001-2016



With congratulations and deepest gratitude to
the Graduate School of Applied & Professional
Psychology on your 45th anniversary.

We are proud to be alumni of the gold
standard of professional psychology schools
in the country.

Thank you for the education and unwavering
support to pursue our dreams and form
careers devoted to helping others.

Peter DeNigris, Psy.D. (Clinical, 2004)
President, GSAPP Alumni Organization

Sean Hiscox, Ph.D.

Mary Jane Carlin, Ph.D., LPC

Amanda Morales, Psy.D. (Clinical, 2015)
Vice President, GSAPP Alumni Organization

Zachary Yeoman, Psy.D.

Philip Witt, Ph.D., ABPP
(Former GSAPP Instructor)

Laura Polhamus, Psy.D.

Mark Frank, Ph.D.

Saba Khan, Psy.D. (Clinical, 2018)

Brian Eichert, Psy.D. (School, 2018)

134 West End Avenue
Somerville, New Jersey 08876
908.333.4646 (phone)
908.722.5060 (fax)
www.somersetpsych.com

Happy 45th Anniversary GSAPP



Thank you, Dean Conway, Faculty, Staff, Peter DeNigris, GSAPP Alumni, GSAPP Alumni Organization and to all the students who now inhabit the halls and the classrooms, for celebrating these 45 years.

I want to congratulate GSAPP and everyone who contributed to develop and enrich the school in the past 45 years of existence. Dean Sandy Harris, Dean Stan Messer, and the GSAPP Family welcomed me, an immigrant who dreamed of becoming a licensed psychologist in the USA.

GSAPP made me feel that I belonged and made my dream come true. It will forever be my honor and privilege to be a part of the GSAPP Family.

Felicitades,

Dr. Lucy Sant'Anna Takagi
78 Fillmore Steet
Suites 2-3
Newark, NJ 07105
dr.lucy.takagi@gmail.com
Cell: (973) 979-7987





School of Arts and Sciences

*Congratulations to the
Rutgers University
Graduate School of Applied and
Professional Psychology
on forty-five years of excellence!*

Home to more than 50 academic disciplines, the School of Arts and Sciences is where you'll find a renowned faculty preparing students to become philosophers and mathematicians, physicists and physicians, economists and neuroscientists, and so much more—all in an atmosphere of rich cultural and academic diversity—where intellectual inquiry opens doors to new worlds of knowledge and intellectual adventure. Visit us today.

sas.rutgers.edu



Marlene & Barry Brandt
are proud to support
**Rutgers Graduate School of Applied
and Professional Psychology**
and celebrate
45 Years of Serving the Community!

RUTGERS HEALTH

University Behavioral Health Care

Congratulates

**Rutgers Graduate School of Applied and
Professional Psychology on its
45th Anniversary**

To learn more about UBHC please visit <https://ubhc.rutgers.edu>

*Dean Jonathan Potter,
The School of Communication and Information
Faculty, Staff, and Students Congratulates
and Celebrates the
Rutgers Graduate School of Applied and
Professional Psychology on
45 Years of Excellence
1974-2019*

RUTGERS

School of Communication
and Information

Congratulations to the

**Rutgers Graduate School of Applied
and Professional Psychology**

on 45 Years of Excellence

from



RUTGERS

School of Management
and Labor Relations



RUTGERS

Graduate School of Education

Rutgers Graduate School of Education Congratulates GSAPP on its 45th Anniversary!

Rutgers Graduate School of Education is committed to Advancing Excellence and Equity in Education. With over 16,000 living alumni who are effective practitioners, transformative leaders, and accomplished researchers in their respective disciplines, Rutgers GSE is consistently ranked among the best schools of education in the country. GSE faculty, through their innovative research and scholarship, advance educational practices and policies in New Jersey and across the nation.

Congratulations

to the

GRADUATE SCHOOL OF
APPLIED AND PROFESSIONAL
PSYCHOLOGY

on your

45th ANNIVERSARY



RUTGERS

Edward J. Bloustein School
of Planning and Public Policy



RUTGERS

Rutgers Business School
Newark and New Brunswick

Congratulations to the Graduate School of Applied and Professional Psychology at Rutgers University on 45 Years of Excellence!

Jersey City | Madison | Newark | New Brunswick | Singapore

Rutgers, The State University of New Jersey – Founded 1766

business.rutgers.edu



FOR APPOINTMENTS
Contact one of our
Intake Coordinators at:
732-390-6694 x0

• Now offering
telehealth services

• Weekend hours are available

For more information, go to:
www.StressAndAnxiety.com



Stress and Anxiety Services of New Jersey specializes in the evidence-based treatment of:

- Obsessive Compulsive Disorder (OCD)
- Post Traumatic Stress Disorder (PTSD)
- Panic Disorder and Agoraphobia
- Specific Phobias
- Social Anxiety Disorder (Social Phobia)
- Generalized Anxiety Disorder (GAD)
- Body Focused Repetitive Behaviors (BFRBs)
like Trichotillomania and Excoriation Disorder

We treat: • Children • Adolescents • Adults

Executive Director: Allen H. Weg, Ed.D NJ license Psychologist #2720

**OFFICE LOCATIONS: A-2 Brier Hill Ct., East Brunswick, NJ 08816
195 Columbia Turnpike, Suite 120, Florham Park, NJ 07932**

CELEBRATING 45 YEARS OF GSAPP

AND THE WONDERFUL
CONTRIBUTIONS OF
**STAN MESSER,
KENNETH SCHNEIDER,
AND BONNIE MARKHAM**



VICKI SEMEL

PRESIDENT OF THE ACADEMY OF CLINICAL
AND APPLIED PSYCHOANALYSIS

Congratulations to our special honorees:

Stan, Ken, and Bonnie

We are fortunate to have such gifted leaders!
It's an honor to be part of this community and to join
together to celebrate GSAPP's anniversary.

Thank you for the privilege!
Joan Glass Morgan

PSYCHOTHERAPY, PSYCHOANALYSIS, AND MINDFULNESS-BASED APPROACHES
518 ELM STREET | WESTFIELD, NJ 07090 | 908.654.6505
WWW.JOANGLASSMORGAN.COM

Congratulations

Dr. Stanley Messer

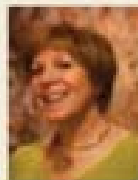
Legacy Award

Dr. Kenneth Schneider

Distinguished Teacher Award in School Psychology

Happy 45th Anniversary GSAPP!

Thank you to my friends and colleagues for your presence as we celebrate the many contributions made by our faculty, staff, friends and alumni over years.



On behalf of Bonnie Markham, PhD, PsyD.

Distinguished Professional Contributions to Clinical Psychology Award

Independent Practice of Psychology

50 Pearl Street

Metuchen, New Jersey 08840

Phone: 732-994-5471

bbonnie.markham@hotmail.com

Congratulations to the Rutgers Graduate School of
Applied and Professional Psychology Faculty and Staff
on 45 years of excellent psychology education

And today to honor the
major contributions of doctors
Bonnie Markham,
Stanley Messer,
& Kenneth Schneider

To that overall excellence with very best wishes
for the next 45 years of psychology studies

From Catherine Haran Psy.D. (91)

Transference Focused Psychotherapy New York
Tfpsy.com

NJCS AD

***Congratulations to the extraordinary
honorees, Bonnie, Ken, and Stan, on
all that you have accomplished at
GSAPP over the years.***

**To Ken and Stan,
Thank you for your guidance, wisdom, and
supervision throughout our years at GSAPP!**

Meir Flancbaum, PsyD ('11 Clinical)
Atara Hiller, PsyD ('13 Clinical)
Jeremy Lichtman, PsyD ('16 School)
Center for Cognitive Behavior Therapy
Therapy - School Consultation - Training
190 Route 18 North, Suite 203, East Brunswick, NJ 08816
info@CenterForCBT.org | (732) 994-3456 | www.CenterForCBT.org

The Center for Great Expectations congratulates
The Rutgers University
Graduate School of Applied and Professional Psychology
On 45 Years of Excellence!

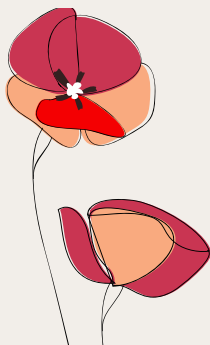


The Center for
Great Expectations

Embracing change. Empowering futures.



Congratulations
GSAPP
on 45 years of
excellence



Mike and Amy Lillard

Congratulations
&
THANK YOU!

Bonnie, Ken &
Stan

For all you
have done and
have been to
psychology &
GSAPP

Fondly,
Sharon Ryan
Montgomery



15 Clyde Road
Suite 102
Somerset, NJ 08873

31 Dehart Street
Morristown, NJ 07960

Congratulations to the honorees

Stan Messer,
Kenneth Schneider,
and Bonnie Markham

**STRIDES IN
PSYCHOTHERAPY, PC
732-873-5570**

Linda Tamm, PsyD
Tammy Dorff, PsyD
Amy Kavanaugh, PhD
Elizabeth M. Smith, PsyD
Erica Pass, PsyD

CONGRATULATIONS TO ALL THE HONOREES

**BONNIE MARKHAM
STANLEY MESSER
KENNETH SCHNEIDER**

STEPHEN A. CAPSON, PSY.D.
(1980)
stephenpsy@aol.com

Congrats

Congratulations to our
Beloved GSAPP &
45th Anniversary Honorees



Inez Phillips Durham, Psy.D.
GSAPP 1984
Jennifer Inez Durham, Psy.D.
GSAPP 1992

45 YEARS

CONGRATULATIONS
STANLEY ON ALL
YOUR YEARS AND
IMPACT ON GSAPP.



JOEL, NANCY AND
LOGAN SCHULMAN

*Congratulations GSAPP Faculty,
Alumni, Students & Staff on
45 outstanding years of enhancing
the lives of individuals, families,
schools, and communities!*

*Mazel Tov and Best Wishes to
tonight's esteemed honorees: Bonnie
Markham, Stanley Messer & Kenneth
Schneider for your extraordinary
scholarship, dedication, and passion.*

*To Stanley Messer, abundant recognition
and gratitude for your inspirational
vision, compassionate leadership, and
your kindhearted friendship.*

*We are honored to share
in this celebration,
Mary Chrow & D'Arcy Le Neveu*



Dr. Sandra Sabatini
Clinical and Family Psychologist

Clinical Psychology Associates

Individual, Family and Group Therapy
Evaluations and Training Programs

Working together for you and yours since 1986

216 W Ramapo Ave.
Mahwah, New Jersey, 07430
201 327 3730
Fax: 201 327 3705
drssabatini@gmail.com



Jeffrey S. Kellogg, Psy.D
Clinical Child Psychologist
Licensed Clinical Psychologist (IL)
3412 South Illinois Ave.
Carbondale, IL 62903

Telephone:
618.457.4488
Fax: 618.457.8844
Email: drkids@siu.edu

emergency: 618.534.1900

**Congratulations and Thank You,
GSAPP Community and Honorees!**

Shara Marrero Brofman, Psy.D.

145 Palisade Street
Dobbs Ferry, NY 10522
646.450.4831
info@drsharabrofman.com
www.drsharabrofman.com

Tamara Latawiec, PsyD

CLINICAL PSYCHOLOGIST
NJ LICENSE 4894

43 West Front Street, Suite 18
Red Bank, New Jersey 07701
phone 732.720.3236
www.monmouthpsychotherapy.com

psychodynamic psychotherapy for adults and adolescents



Event Sponsors

Platinum Sponsors

Rosalind Dorlen '74
The Karma Foundation
Carole A. Salvador '82 and Diana S. Salvador '02
Stanley Messer

Silver Sponsors

Marlene Brandt
Peter DeNigris '04 and Somerset Psychological Group
Amy and Michael Lillard
Sharon Ryan Montgomery '78
Lucy Sant'Anna Takagi '06

Scholar Sponsors

Peter DeNigris '04 and Somerset Psychological Group
Jane Hochberg '76
Nancy McWilliams and Michael Garrett
Carol E. Mossip '83
Jonathan Pastor '02

Bronze Sponsors

Nancy Boyd-Franklin
Barry Mitchell '77
Lisa D. Moses '12
Susan Wilson

This program made possible through financial support
received from the Rutgers University Alumni Association.

Individual Donations

Lisa Blum
Dorothy Cantor
Laurie Cardona
Francine Conway
Peter DeNigris
Jennifer Durham
Peter Economou
Brian Eichert
Dina Elkins
Nancy Friedman
Arthur Frieman
Jane Hochberg
Debra Khohn-LeClair
Carol Lidz
Michael & Amy Lillard
John Lombardi
Mark Lowenthal
Melissa Marano
Bonnie Markham
Heather McGarry
Nancy McWilliams
Barbara Menzel
Stanley Messer
Amanda Morales-Clark
Caroline E. Mossip
Jonathan Pastor
Inez Phillips-Durham
Andrea Quinn
Marianne Rippe
Sharon Ryan Montgomery
Nirmal Sadarangani
Carole Salvador
Marty Siederer
Brian Welch
G. Terrance Wilson

Endowments

Establishing endowments to support students, faculty and programs at GSAPP are vital to sustaining our educational excellence and enhancing our ability to serve the mental health needs of children, adults, families, groups, organizations, and communities, especially the underserved. Private support continues to have a transformative effect on our ability to provide innovative training opportunities and leading edge service to the community.

We wish to thank our donors who have contributed to the following:

Endowed Chairs

Helen Chaney Chair in Alcohol Studies
Karmazin Lillard Chair in Adult Autism

Center for Psychological Services Training Clinics

ADHD Annual Fellowship
Bert Schwartz and Morrie Goodman Group Psychotherapy Fund
Henry and Anna Starr Fellowship
Peter I. Wase Tourette Syndrome

Dissertation Awards

Bonnie Markham Scholarship
Cyril & Violet Franks Dissertation Award

Fellowships and Scholarships

Alumni Scholarship
DDDC Endowment Fund
Dorothy & David Cooper Fellowship Fund
Edith Neimark Fellowship
GSAPP Achievement Endowment
Graduate Student Assistantship Fund
Jan Handleman and Susan Arlen Endowment for Autism
Jamila Irons-Johnson Fellowship
Jennifer Leon and Melissa Lomench
Kristin and Joseph Mannello Endowment Scholarship
Kenneth and Linda Schneider Endowed Scholarship
Mel and Ruth Schulman Fellowship
Michael Fowlin Endowed Scholarship
Nancy McWilliams & Stanley Messer Psychodynamic Endowment
Robert & Wendy Alderman Adult Services Fund
Roger and Rebecca Fine Fellowship
Rutgers Center for Adult Autism Services Endowment
Sandra Lee Harris Fellowship
Susan N. and Donald Wilson Endowment
Trauma Endowment Fund

A Year In Review

Rutgers Catalyst: Healthy Aging Symposium
Autism NJ - DDDC Alumni Reception with Dr. Robert LaRue Keynote Address
Rutgers vs. Northwestern Football Tailgate
Culture Conference: Dr. Nancy Boyd Franklin
Karmazin & Lillard Endowed Chair in Adult Autism: Dr. Vanessa Bal
PTSD-AOD VCT Study ISTSS Grant Kickoff Reception
Faculty-Led Colloquium: Dr. Daniel Fishman
CADC/SMLR Program Graduation
NASP PREPaRE Training
Peterson Prize Colloquium: Dr. David Sacks
Rutgers vs. Minnesota Basketball Tailgate
Faculty-Led Colloquium: Dr. Perry Halkitis
White Institute Colloquium: Dr. Francine Conway
Faculty-Led Colloquium: Dr. Louis Sass
Faculty-Led Colloquium: Autism Panel
Trauma and Addictions Conference
Topgolf Alumni Organization Fundraiser
A Conversation with Malin Fors: A Grammar of Power in Psychotherapy
The Family Experience: The Division of Autism Academic and Applied Services: Dr. Kate Fiske
Dean's Multicultural Advisory Committee & Minority International Alumni Dinner
Perspectives of Autism in Adulthood: Division of Autism Academic and Applied Services
MDMA & Evidence-Based Treatment for PTSD: Dr. Anne Wagner
Mental Health Awareness Conference in Collaboration with NJPA
Barnes & Noble Book Signing featuring GSAPP Faculty Authors
Faculty-Led Colloquium: Dr. Shireen Rizvi and Dr. Nicole Cain
Psychoanalytic Community at Rutgers (PCAR)
Mentalization-Based Treatment for Children Training: Dr. Norka Malberg
Rutgers Day
Self-Karen Day
Answer Anniversary Reception
Multi-Tiered System of Supports (MTSS): Illustration of Module
Annual Poster Session – Center of Alcohol Studies
Sports Psychology: Perspectives, Principles and Practices
SEL Forward: NJDOE Conference on Social and Emotional Learning (SEL) (SCTP)
Summer School of Addiction Studies
School Psychology Practicum Supervision Recognition and PD Workshop
RCAAS Groundbreaking Ceremony
GSAPP Dean's Reception – APA Chicago
DDDC Fall Training 2019: Dr. Peter Gerhardt
Psychodynamic Diagnostic Manual 2nd Edition Workshop: Dr. Nancy McWilliams
Psychology and Beyond Panel – Student-Led Event
GSAPP Apparel Sale – Student-Led Event
Culture Conference: Dr. Howard Stephenson
45th Anniversary Gala Wine Reception
45th Anniversary Gala



RUTGERS

Graduate School of Applied
and Professional Psychology