

Mark Larsen

Title: General Manager,
Greater Kaweah GSA

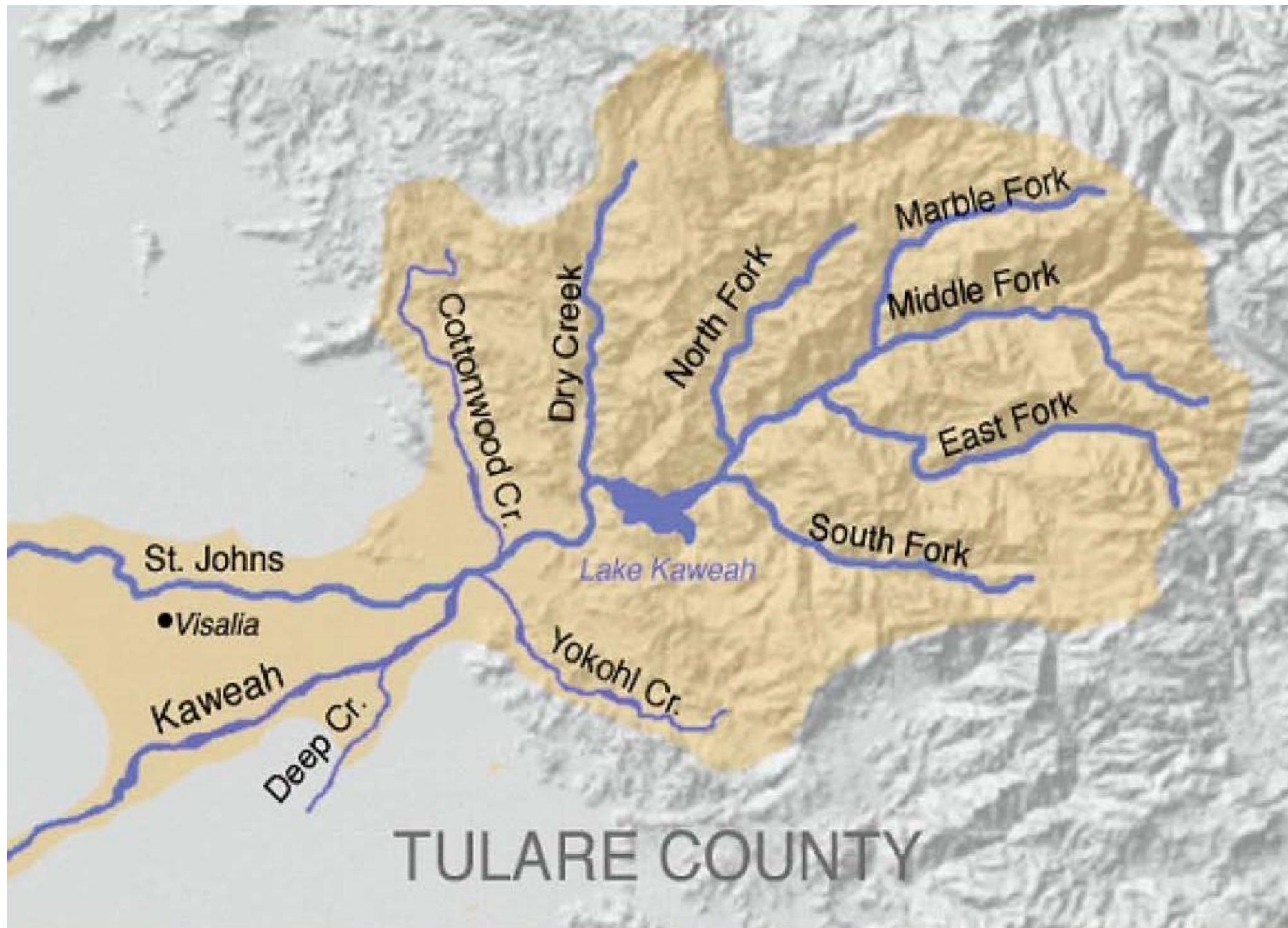
Watermaster, Kaweah and St.
Johns rivers

Topic: Kaweah River System
Water Mangement



Water Supply and Flood Control in the KAWEAH BASIN

- River System
- Surface Water Supply
- Water Management Entities



TULARE COUNTY

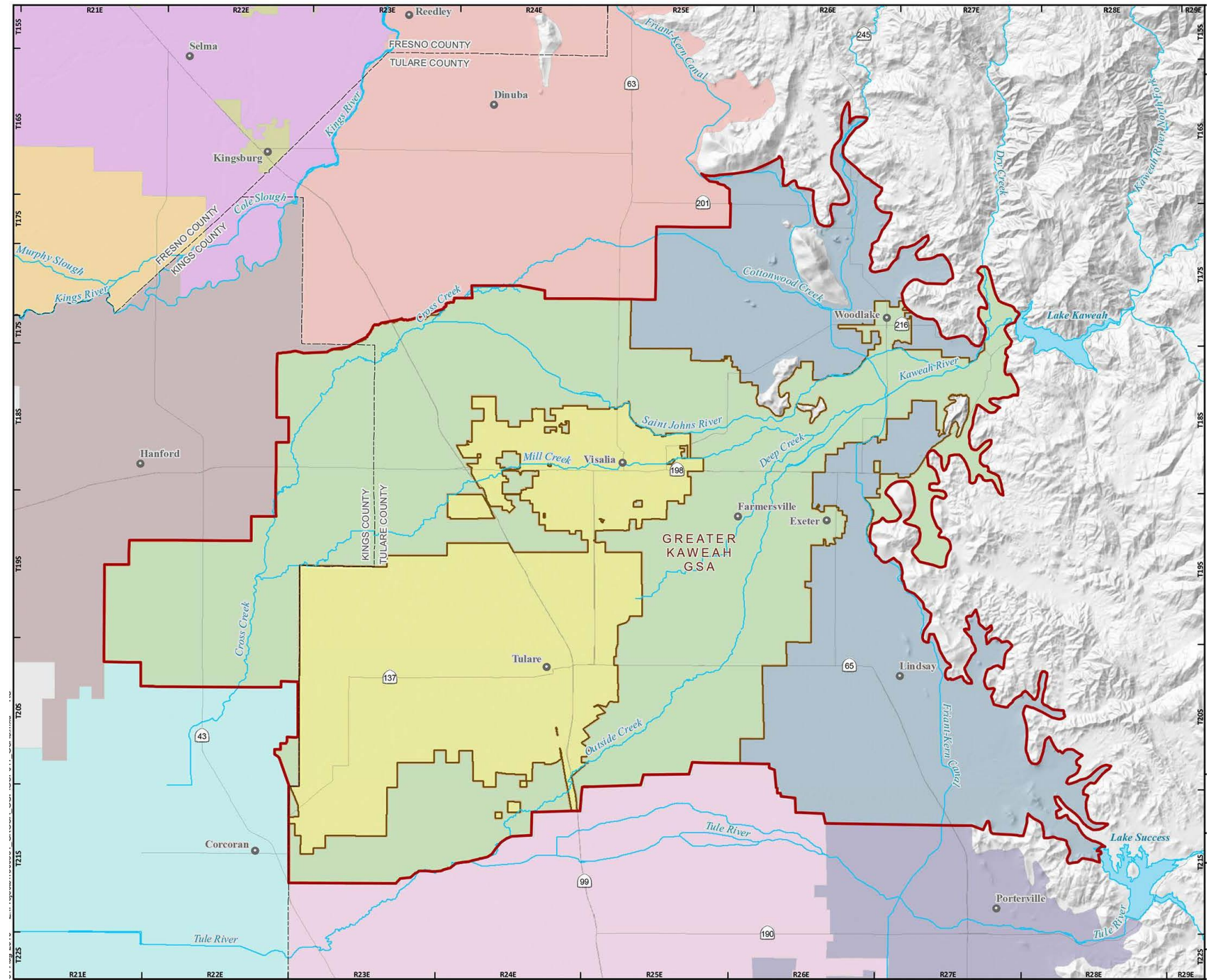


Figure 1-1: Greater Kaweah Jurisdictional Boundaries

Annual Average Surface Water Supply

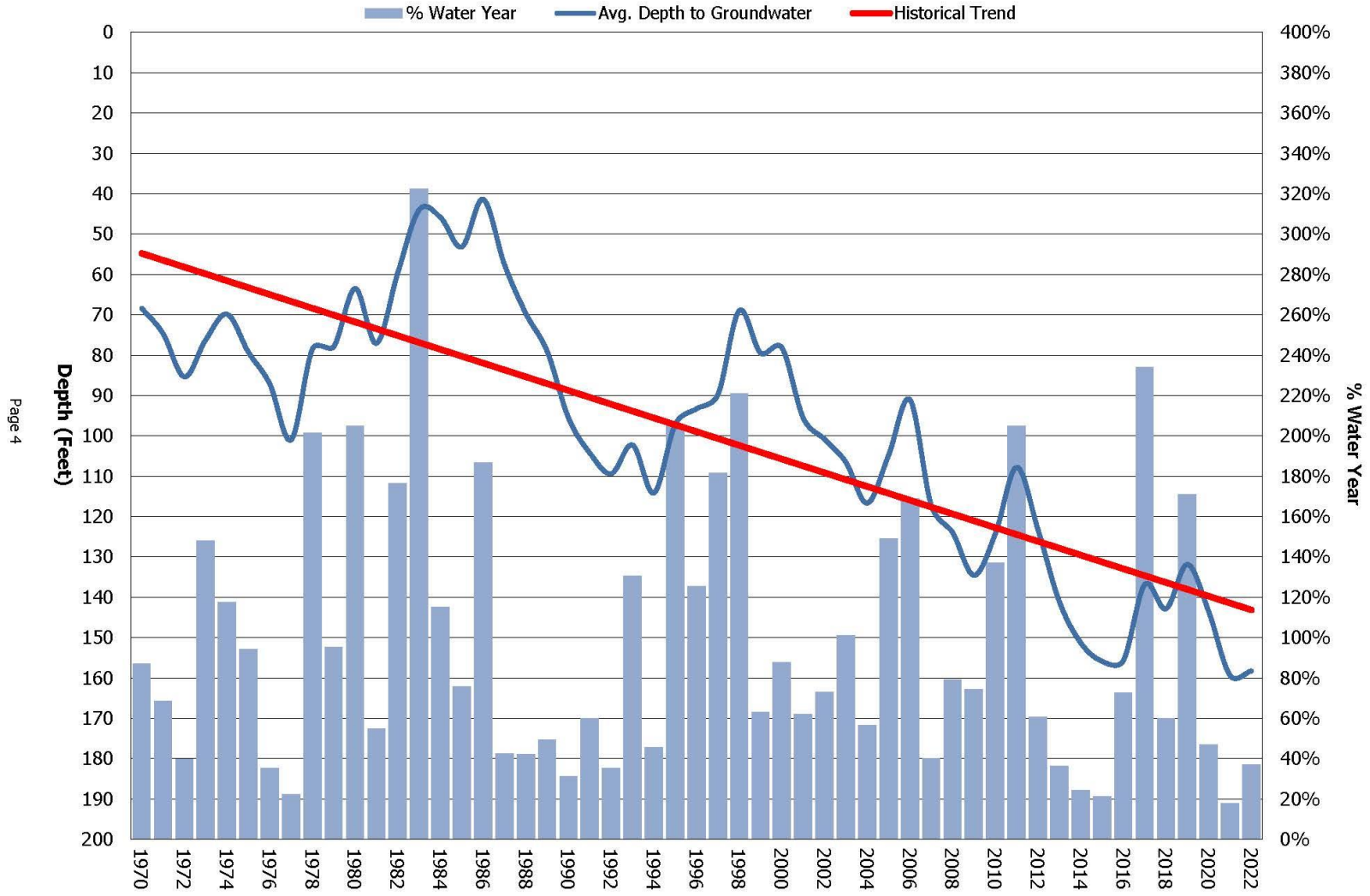
Kaweah River Supply	430,000 af	80%
CVP – Friant Kern	90,000	18%
Kings River	10,000	2%
State Water Project Water	~0	0%
Total	<hr/> 530,000	

* 1 Acre Foot = Annual Water for Family of 4

Kaweah - 2024 Water Year?

2014	24%
2015	21%
2016	72%
2017	238%
2018	61%
2019	174%
2020	48%
2021	19%
2022	37%
2023	~309%
2024	??

Historical Average Depth to Groundwater (Fall Measurement)



Kaweah Basin

WATER
SUPPLY

Kaweah & St.
Johns Rivers
Association

FLOOD
PROTECTION

US Army Corps
of Engineers

WATER
MANAGEMENT

Kaweah Delta
Water
Conservation
District

WATER
MANAGEMENT

Kaweah Delta
Water
Conservation
District



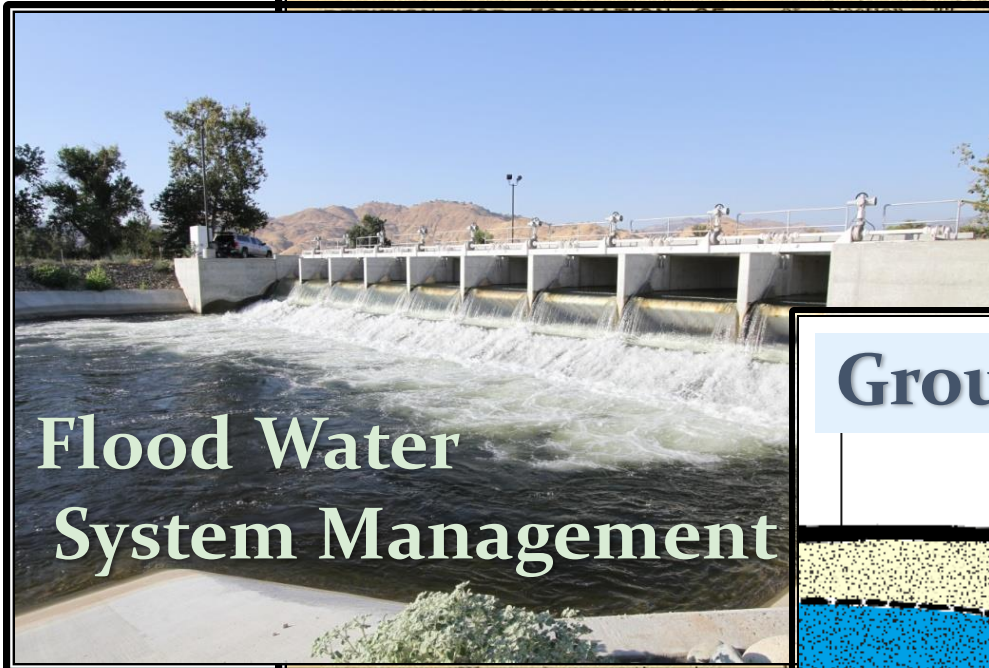
Petition for Formation of "Kaweah Delta Water Conservation District"

Under the Provision of the "Water Conservation Act of 1927"

BEFORE THE BOARD OF SUPERVISORS OF THE COUNTY OF TULARE, STATE OF CALIFORNIA.

miles to the Northeast corner of the Northwest quarter of Section 29, said Township and Range, running thence West 3 1/2 miles to the Southeast corner

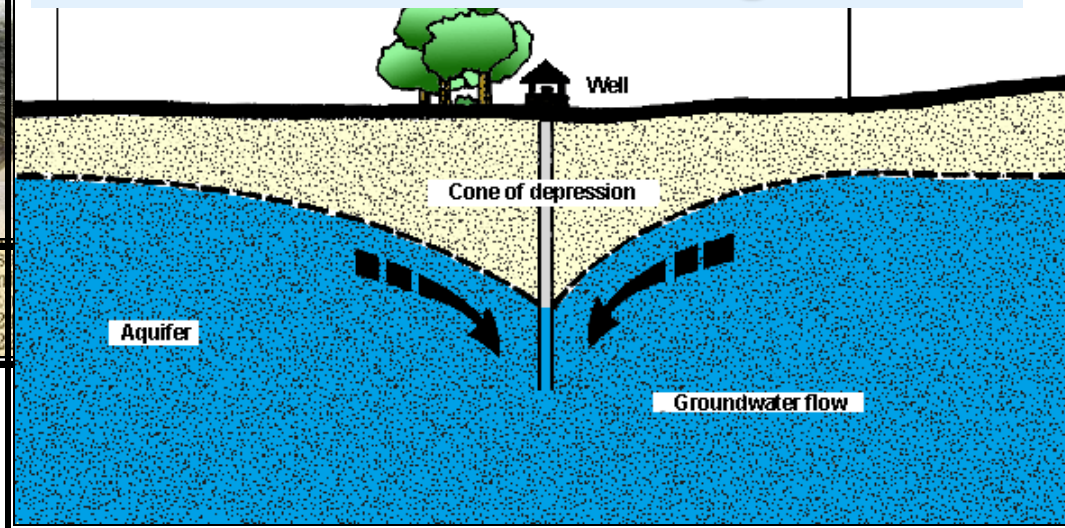
& M., running thence West 1/2 mile to the Northwest corner of the Southeast quarter of said Section 12, running thence South 1/2 mile to the Southwest corner of the Southeast quarter of said Section 12, running thence West 1/4 mile to the Northwest corner of the Northeast quarter of the Northwest quarter of Section 13, said Township and Range, running thence South 1/4 mile to the Southwest corner of the Northeast quarter of the Northwest quarter of said Section 13, running thence West 1/4 mile to the Northwest corner of the Southwest quarter of the Northwest quarter of said Section 13.



Flood Water System Management

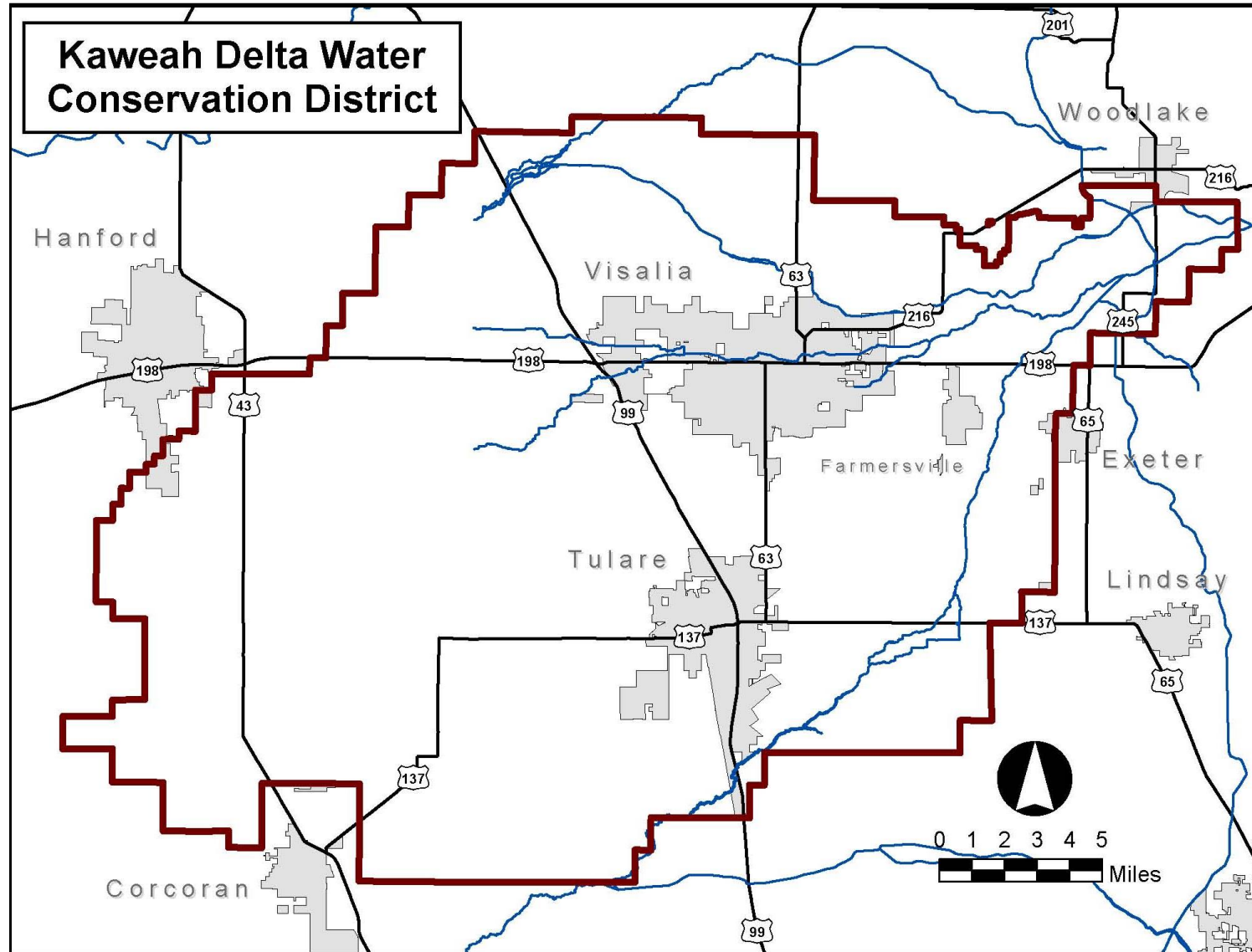
called the "Water Conservation Act of 1927", approved by the Governor April 11, 1927, and being Chapter 91, Statutes of 1927, and further propose that said district be known as the "KAWEAH DELTA WATER

Groundwater Management



Kaweah Delta Water Conservation District

- 340,000 Acres, +200 Miles of Channels, 2 Major Cities



1906



Channel Maintenance



Groundwater





FLOOD
PROTECTION

US Army
Corps of
Engineers

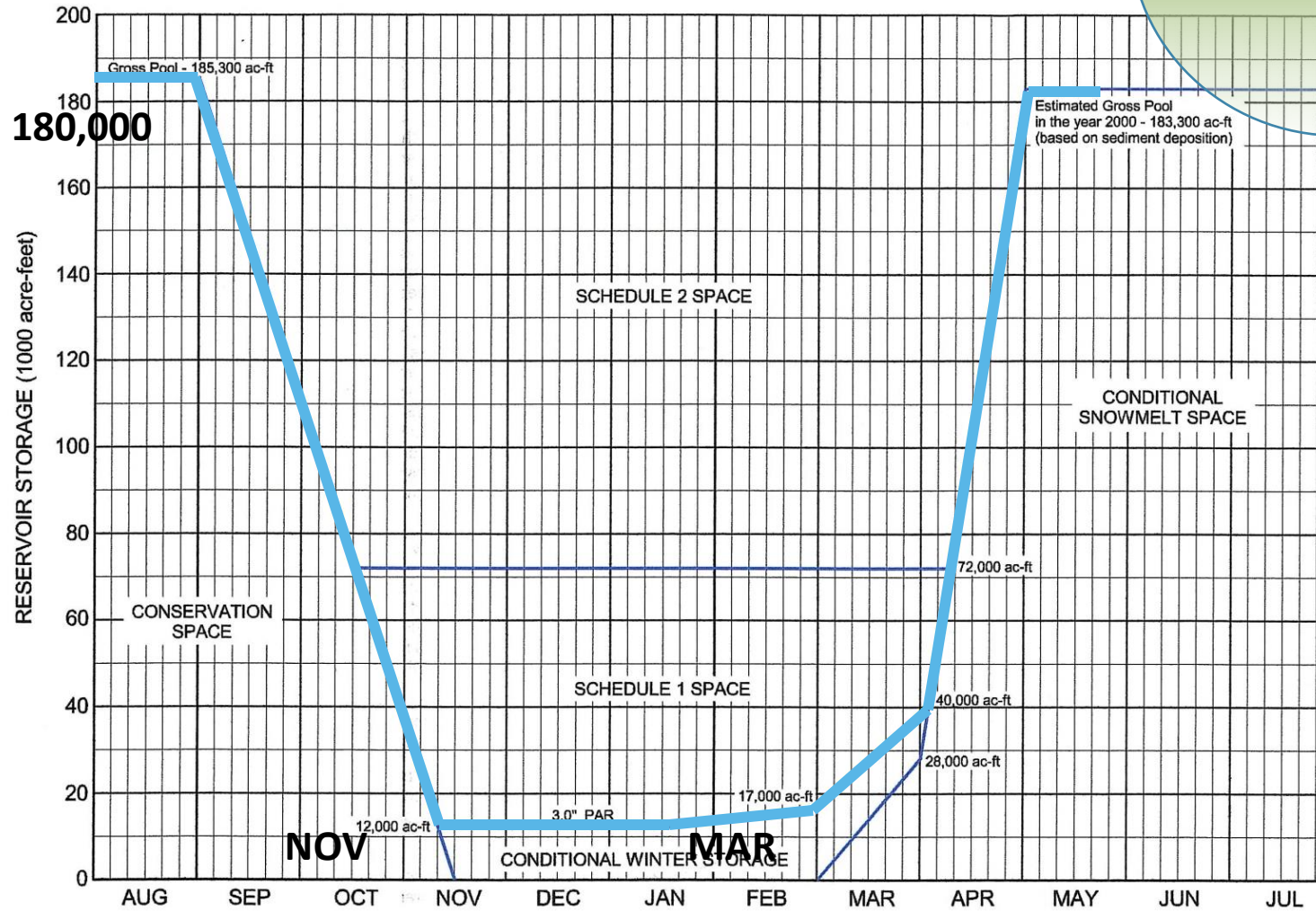
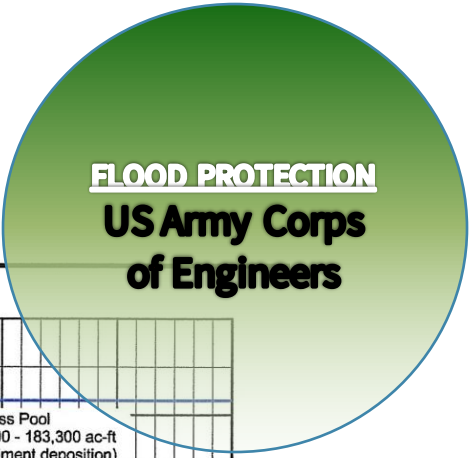


- Owns the Property
 - Owns the Facilities
 - Has Primary Use of Lake
 - FLOOD PROTECTION
- Controls Lake Storage from Nov 15 – April 15

FLOOD
PROTECTION

US Army
Corps of
Engineers

Lake Kaweah Storage



WATER
SUPPLY

**Kaweah & St.
Johns Rivers
Association**



WATER
SUPPLY

**Kaweah & St.
Johns Rivers
Association**



- Previously Two Separate Associations
- KSJRA Formed 1974
- 31 Units with water rights
- Some Ditch Co., Irrig. Districts, Riparian
- Private and Public Entities



“Protect and preserve the diversionary rights of the Kaweah and St. Johns Rivers”

WATER
SUPPLY

**Kaweah & St.
Johns Rivers
Association**



- Kaweah River is a “fully appropriated stream”
- Water is distributed to the member units from a schedule based on historical use
- They have a contract with KDWCD to store water in Lake Kaweah

Kaweah Basin

WATER
SUPPLY

Kaweah & St.
Johns Rivers
Association

FLOOD
PROTECTION

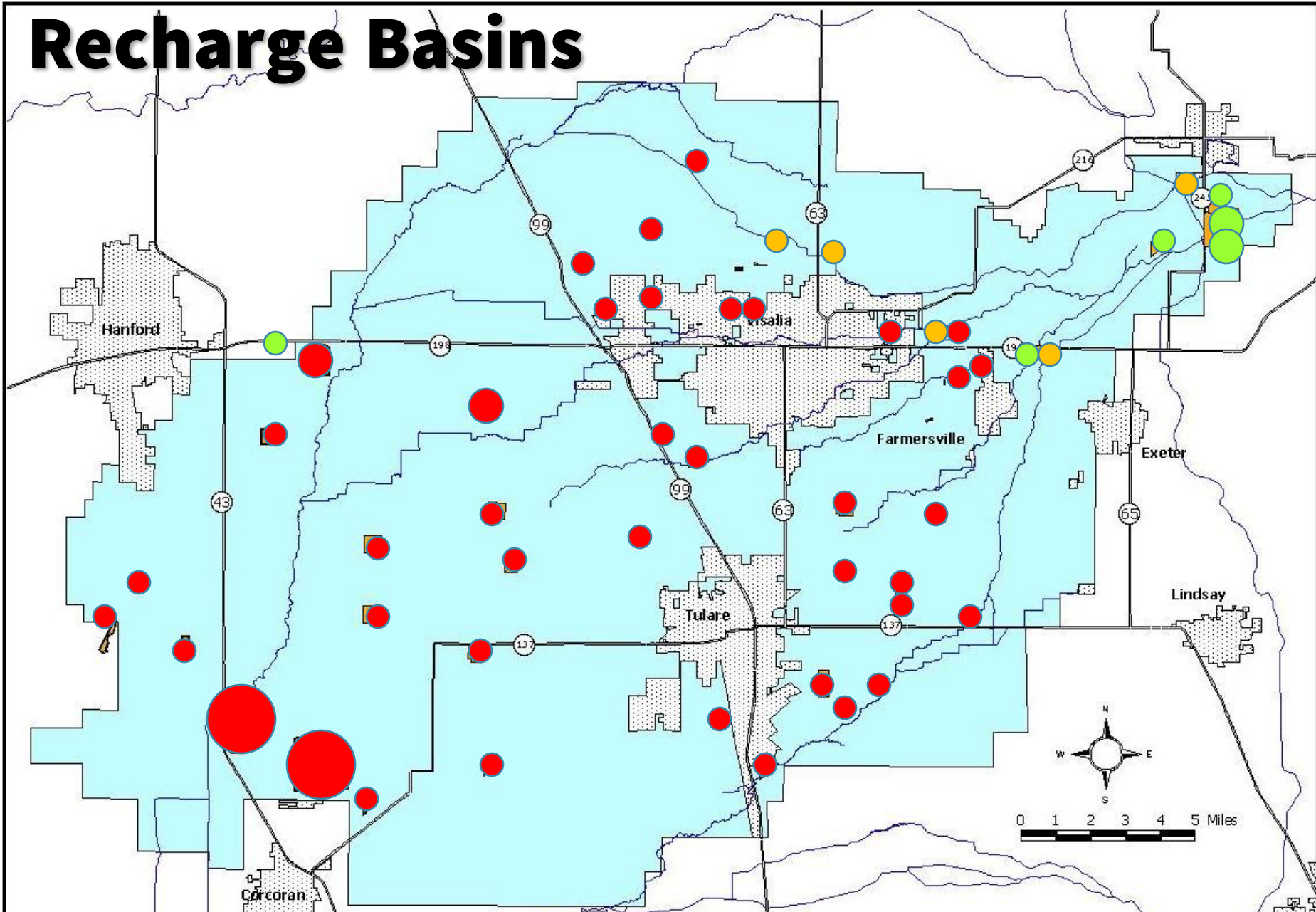
US Army Corps
of Engineers

WATER
MANAGEMENT

Kaweah Delta
Water
Conservation
District

- Coordinate Flood Releases and Water Distribution
- Development and Utilization of Recharge Basin Facilities
- Water Importation

Recharge Basins





Lake Kaweah Enlargement Project



Lake Kaweah Enlargement Project

LAKE KAWEAH - Original

- Constructed 1962
- Original Capacity 143,000 Acre-Feet
- Protection 46 year

LAKE KAWEAH - Enlargement

- Construction 2004
- New Capacity 186,000 Acre-Feet
- Protection 70 year