



EAST KAWEAH
GROUNDWATER SUSTAINABILITY AGENCY

LINDSAY RECHARGE BASIN

Increasing water supply resilience in and near Lindsay, CA



GROUNDWATER QUALITY

Recharges high quality Central Valley Project (CVP) surface water from the Friant-Kern Canal to improve water quality in the groundwater aquifer



GROUNDWATER STORAGE

Capacity to recharge an estimated 150 acre-feet of surplus surface water to increase the amount of water in groundwater storage

Re-Investing in Existing Infrastructure: Lindsay Recharge Basin Improvements

Improvements to the existing 8-acre Lindsay Recharge Basin completed in early 2023 included basin re-grading, water infiltration improvements, pipe installation and connection to a Lindmore Irrigation District pipeline, trench compaction, to:

- increase recharge capacity to approximately 5 acre feet per day
- yield an average of 150 acre-feet of recharge per year

Paving a water resilient future through partnerships



Expanding the impact of the Lindsay Recharge Basin is the result of partnership between the City of Lindsay and Lindmore Irrigation District with the support of the East Kaweah Groundwater Sustainability Agency and Department of Water Resources.

Project funding



- Total project cost = \$443,000
- **Local Agency Contribution = \$150,000**
- **Prop 68 Sustainable Groundwater Management Grant Program, Department of Water Resources = \$330,000**

Groundwater: our shared water source



Groundwater is an important water supply source for Lindsay residents, rural residents with domestic wells, and local growers. When there is not enough surface water supply from rain and snow to meet everyone's needs, pumping groundwater from the aquifer bridges the gap. The Lindsay Recharge Basin located on Mariposa Street in the City of Lindsay, a severely Disadvantaged Community, improves the water supply resilience for the area.

Replenishing the groundwater aquifer



Chronic drought conditions and increasing demands have led to over-reliance on the groundwater supply. The Lindsay Recharge Basin helps replenish our shared groundwater resource by increasing our local capacity to capture surface water during years with high levels of rain and snowfall, all for the purpose groundwater recharge.

@EastKaweahGSA

East Kaweah Groundwater Sustainability Agency

East Kaweah Groundwater Sustainability Agency

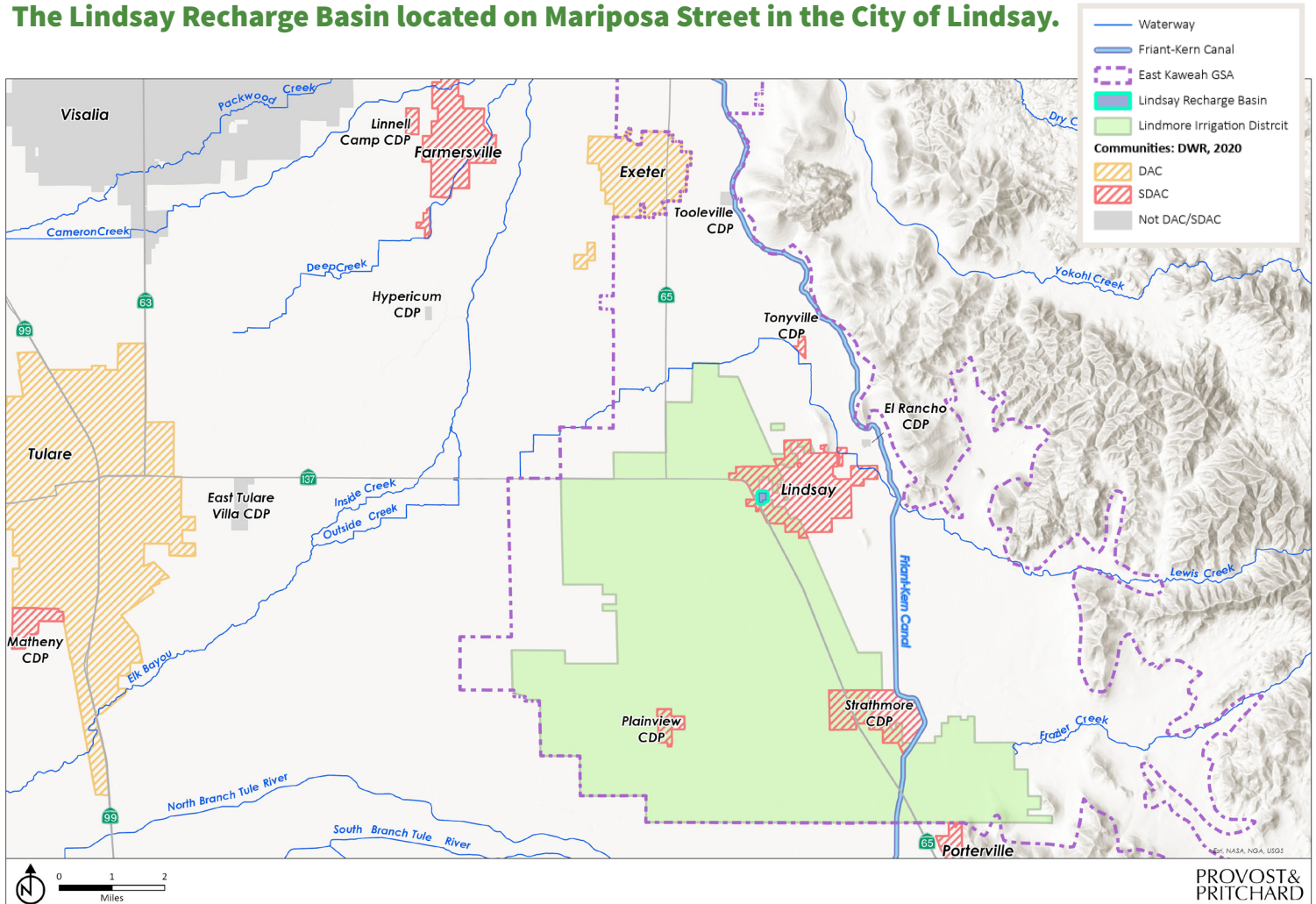


EAST KAWEAH
GROUNDWATER SUSTAINABILITY AGENCY

LINDSAY RECHARGE BASIN

Increasing water supply resilience in and near Lindsay

The Lindsay Recharge Basin located on Mariposa Street in the City of Lindsay.



Total **Prop 68**
grant dollars:

\$330,000



Recharge capacity
per day

5 acre-feet



Recharge capacity
per year

150 acre-feet