


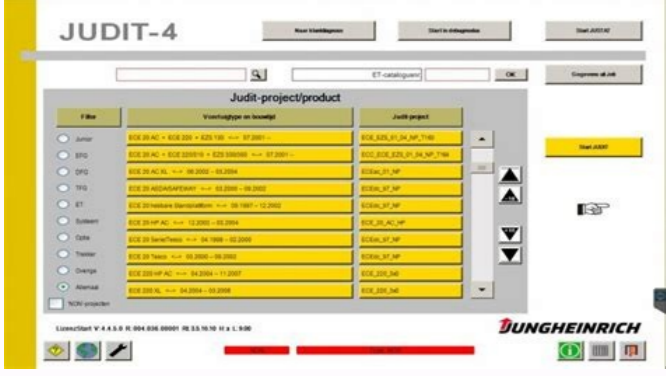
I'm not robot  reCAPTCHA

**I'm not robot!**

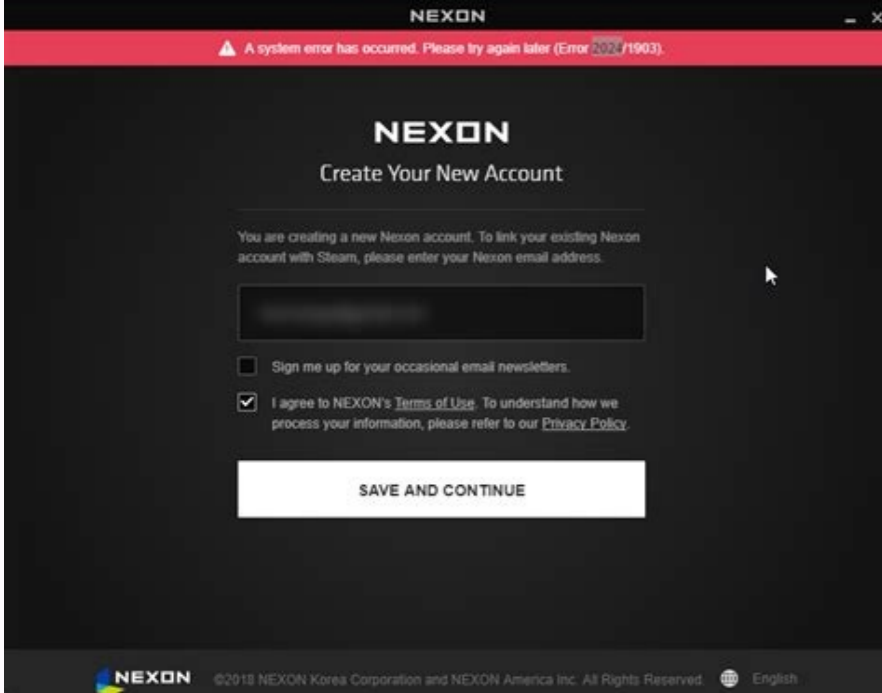
# Jungheinrich error code 1901

## Jungheinrich error codes list. Jungheinrich error code 1123. Jungheinrich error code 4372. Jungheinrich error code 1901.1. Jungheinrich error codes.

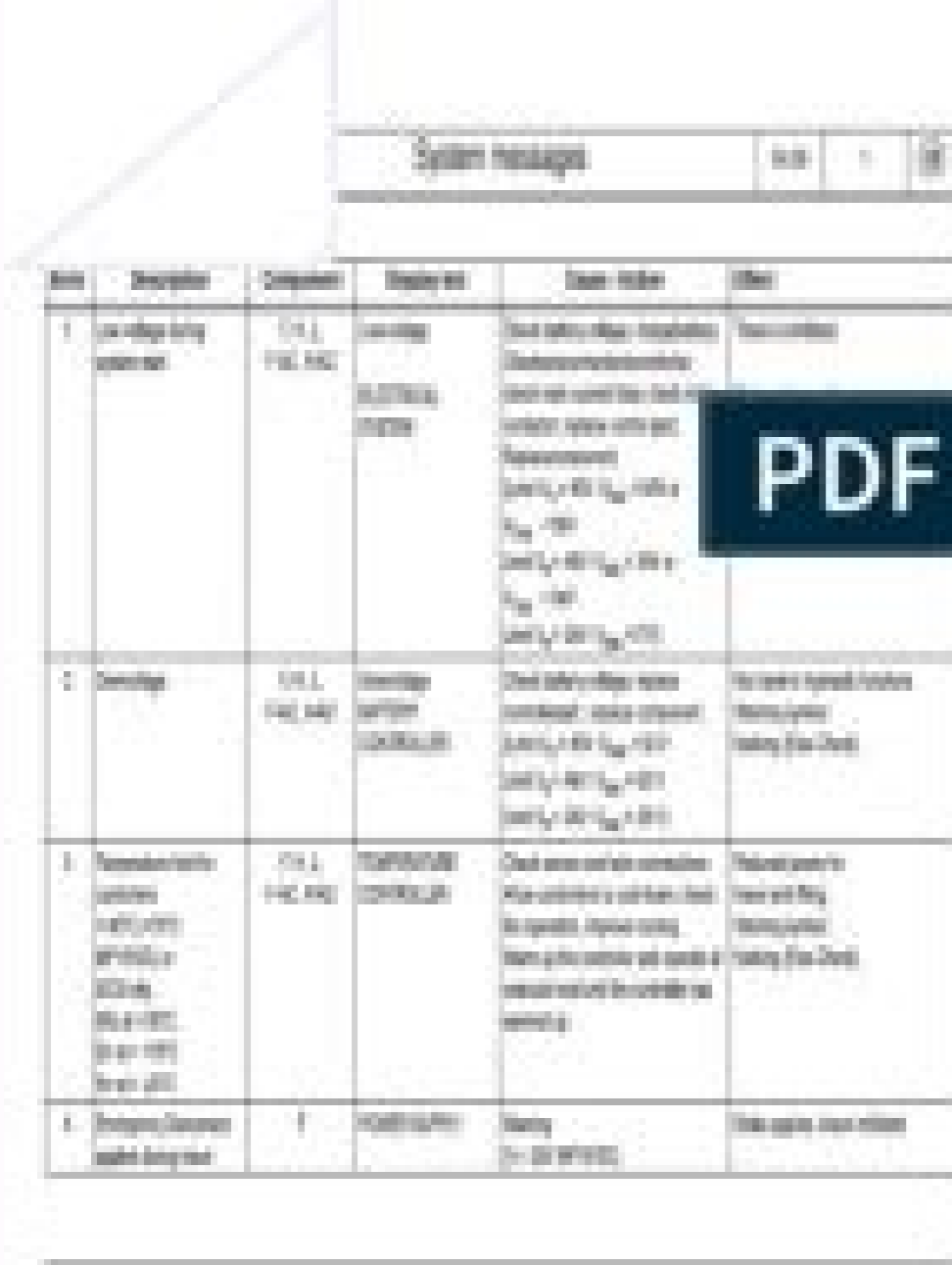
Careers Investor relations Sustainability Press/events Stories About us 0915.2 - Industrial truck not ready for operation - battery door opened.0938.1 - Battery discharged (0%).1901.1 - Drive pedal activated during startup.1904.1 - No travel direction present with drive pedal activated.1908.1 - Seat belt or belt lock not closed when the pedal is pressed.1909.1 - Activation of drive pedal when the parking brake is not released.1917.1 - Drive pedal and brake pedal both activated at the same time.1918.1 - Industrial truck ready for operation, but cab door opened.2908.1 - Seat belt or belt lock not closed when hydraulic function is activated.2937.3 - Simultaneous activation of several hydraulic functions that can only be operated as individual functions.2951.1 - Hydraulic function activated during startup.5409.1 - Battery temperature too high.5393.1 - Battery cell faulty Jungheinrich EJC112 & E1202 Event Messages Codes List Download Jungheinrich Error Codes List Download Jungheinrich Fault Codes Download Jungheinrich LISTADO ERRORES Download Jungheinrich System Error Codes list Download Jungheinrich System Error Codes list Download Error Description Component Display text Cause / Action Effect 1 Low voltage during system start F, H, L, F-AC, H-AC Low voltage ELECTRICAL SYSTEM Check battery voltage, charge battery; Check wire connection to controller; check main current fuse; check main contactor; replace control part; Replace component; (Limit VN = 80V; VBatt < 64V or VCap. < 56V Limit VN = 48V; VBatt < 34V or VCap. < 34V Limit VN = 24V; VBatt < 17V) Travel is inhibited. Reduced power for travel and lifting. Warning symbol flashing (Else-Check). 2 Overvoltage F, H, L, F-AC, H-AC Overvoltage BATTERY CONTROLLER Check battery voltage; replace controllerpart; replace component; (Limit VN = 80V; VBatt > 92 V Limit VN = 48V; VBatt > 62 V Limit VN = 24V; VBatt > 28 V) No travel or hydraulic functions Warning symbol flashing (Else-Check). 3 Temperature limit for controllers > 80°C (>70°C MP1510C) or ACS only: Info at > 85°C Err at > 115°C Err at < -20°C F, H, L, F-AC, H-AC TEMPERATURE CONTROLLER Check sensor and wire connections Allow controllers to cool down; check fan operation, improve cooling. Warm up the controller and operate at reduced level until the controller has warmed up. Reduced power for travel and lifting. Warning symbol flashing (Else-Check). 4 Emergency Disconnect applied during travel F POWER SUPPLY Warning (V < 20V MP1510C) Brake applies, travel inhibited 5 Overvoltage F, F-AC, H-AC ELECTRICAL SYSTEM Check wire connection to battery, checkBattery, replacecontroller part; Replace component; (Limit for Retrak VBatt > 62 V Limit for MP1510C: V > 32 V) Brake applies, travel inhibited 6 Wire breakage: - Travel setpoint device C, 12, 13, 14, 15, Travel switch TRAVEL SWITCH Check wire connection; Replace travel setpoint device; Replace Canion/ Interface; Travel stop. "Warning" symbol flashes (Else-Check). Hydraulic functions possible 7 Key switch applied duringtravel F,F-AC,H-AC KEY SWITCH Warning (V < 13V for 200ms MP1510C) Brake applies, travel inhibited 8 2 travel directions applied simultaneously F-AC, H-AC, C, MP, S, 12, 13, 15, FS ELECTRICAL SYSTEM Warning, replace travel direction switch, replace Interface 7 Canion; replace Multiplot / Soloplot For twin pedal, check the electrical system.



Travel stop. "Warning" symbol flashing (Else-Check). Hydraulic functions possible 9 Operator protection switch faulty 12, FS ELECTRICAL SYSTEM Check switch, check wire connections 10 V Cap.



<> V Batt; (main contactor jammed or not open) F, H, F-AC, H-AC L MAIN CONTACTOR Check main contactor, check wire connection; check output pin 2 (ACS) of traction controller; replace component No travel, hydraulics Warning symbol Flashing warning (Else-Check). 11 Offset error armature / field current (DC) Stator current (AC); Current measurement point F, H, L, F-AC, H-AC CONTROLLER Check main current wire, replace component Travel no function 12 Disable driver field rheostat faulty for DC Disable driver power stage faulty (forAC) F, H, F-AC, H-AC L CONTROLLER Replace component; for AC: Check flat belt wire connection; replace power part No travel, hydraulics Warning symbol Flashing warning (Else-Check). 13 Disable Watchdog field faulty F, H CONTROLLER Replace components Travel no function 14 - Main contactor notclosed - Field power stage cannot be switched on (DC) F, H, F-AC, H-AC CONTROLLER/ MAIN CONTACTOR Check wire connection; check main contactor; check charging connection, Check field supply fuse, Replace component. No travel, hydraulics Warning symbol Flashing warning (Else-Check). 15 Disable field faulty; Illegal address (for AC) F, H, F-AC, H-AC L CONTROLLER Replace controllerpart; replace component Travel no function 16 Disable driver armature actuator faulty: Software reset (for AC) F, H, F-AC, H-AC CONTROLLER Replace controllerpart (AC); replace component Travel no function 17 Disable Watchdog armature faulty F, H CONTROLLER Replace components Travel no function 18 DC: Armature power stage cannot be switched on AC: one of the 3 phases cannot be switched on F, H, F-AC, H-AC L CONTROLLER Check armature wire connection; replace power part; replace component Travel no function 19 Disable armature faulty: Power stage short circuit (for AC) The error may be triggered by the faulty speed sensor in connection with AS4814Plus controllers. Sensor wheel wobbles (elliptical) or the sensor- sensor wheel gap is too big. In this case the component is not faulty. A short circuit cannot be resolved by switching the truck off/on. F, H, F-AC, H-AC, L-AC CONTROLLER Replace power part; Replace component. Can occur in connection with error 70, in this case: check power supply behind the main contactor contact, in the event of an error the voltage will be much lower here than the rated operating voltage. Disconnect the positive supply from the components to target the error cause. The exception here is the F1 traction controller which must remain connected. One component overloads the testing voltage due to internal short circuit. The testing voltage arises by charging the internal capacitor batteries via a resistor to the level of the control voltage supply. Travel no function Check sensor, replace sensor and / or sensor wheel. 20 Armature incorrectly connected F, H ELECTRICAL SYSTEM Check armature main current wire connection Travel no function 21 Armature overvoltage (short circuit / high side faulty) F, H, F-AC, H-AC L CONTROLLER/ ELECTR Check main current wire to armature; check settings(for AC): Aarmature > 360A for 250ms (MP1510); Replace component. 22 Watchdog error: Watchdog does not run out F, H, L, M, S, A, 12, 13, 14, C, F-AC, H-AC, FS CONTROLLER/ CANION Truck reset, Replace controllerpart; replace component No travel, hydraulics Warning symbol Flashing warning (Else-Check). 23 - Computer overload - Permanent interrupt - "ACS" timeout on CAN connection F, H, L, M, S, A, 12, 13, 14, C, F-AC, H-AC, FS CONTROLLER / CAN Check CAN bus connection; Check CANION connector and component; Replace component No travel, hydraulics Warning symbol Flashing warning (Else-Check). 24 EEPROM cannot be contacted / parameters not plausible / parameter set to default Faulty checksum F, H, L, 12, 13, 14, C, F-AC, H-AC MFC brake MFC hydr. , travel switch CONTROLLER/ CANION Check battery cable; check VBatt; set trucktype, set default parameters; replace control part; replace component Delete logbook, change parameters, set hourmeter, replace component Flashing warning symbol (Else- Check). 26 Wire breakage: - Lift potentiometer M, S, 12, 13 MULTIPLOT / SOLOPILOT / LIFT POTENTIOMETER Check wire connection Lift stop. "Warning" symbol flashes (Else-Check). travel enabled 27 Wire breakage: - Steering setpoint device, à Reach truck: for 45° steering bolster movement no flank from proximity switch. à Canion: "Steer angle acquire active" parameter has incorrect value à Juniors PM2402L: "Operating mode" parameter incorrectly set C, L, 13, 14 STEER ACTUAL ANGLE Check wire connection; Replace steer angle sensor / potentiometer; Replace Canion / Interface; Replace steering; PM2402L from software version 1.60: set parameter P511 "operating mode" correctly 1 = analog sensor (potentiometer), 2 = digital sensor on steer motor Crawl speed, Flashing warning symbol (Else- Check), hydraulic functions enabled. This error produces an emergency stop on the reach truck and the Juniors. 28 Wire breakage: - Steering sensor C, L, 13, 14 STEER NOMINAL ANGLE Check wire connection, replace steering wheel sensor;replace Canion / interface; replace steering Crawl speed, Flashing warning symbol (Else- Check), hydraulic functions enabled. This error produces an emergency stop on the reach truck 29 Wire breakage: - Traverse potentiometer M Traverse nominal value MULTIPLOT Replace Multiplot 30 Wire breakage: - Tilt potentiometer M Tilt nominal value MULTIPLOT Replace Multiplot, Teach Multiplot (Hall sensor 2003 only) 31 Wire breakage: - ZH1 setpoint device - Initial lift / lower Setpoint device M, S Travel switch Sideshift nominal value MULTIPLOT / SOLOPILOT Replace Multiplot / Solopilot, Teach Multiplot (Hall sensor 2003 only); Travel switch: Check / replace switch Hydraulic functions stop. "Warning" symbol flashes (Else-Check). travel enabled 32 Wire breakage: - ZH2 setpoint device M, S MULTIPLOT / SOLOPILOT Replace Multiplot / Solopilot, Teach Multiplot (Hall sensor 2003 only) Hydraulic functions stop. "Warning" symbol flashes (Else-Check). travel enabled 33 Wire breakage: - ZH3 setpoint device M, B MULTIPLOT Replace Multiplot 34 CANBus damaged F, H, L, M, S, A, 12, 13, 14, 15, C, F-AC, H-AC Travel switch CAN-BUS Check CAN bus connection; replace faulty component; Check terminal resistances No travel, hydraulics Warning symbol Flashing warning (Else-Check). Only stored in logbook (from 2004). 35 No travel zero position Deadman and accelerator pedal applied when truck switched on 12, 13, 14, C Travel switch TRAVEL ZERO POSITION Warning, check travel switch; Intermittent contact in interface power supply (12 volts) Check Canion, for twin pedal check electrical system Travel stop. Flashing warning symbol (Else- Check), hydraulic functions enabled. 36 No lift zero position M, 12, 13,FS LIFT ZERO POSITION Warning, check lift setpoint device. Hydraulic functions stop. "Warning" symbol flashes (Else-Check), travel enabled 37 No steering angle nominal value L CONTROLLER / CAN Check steering setpoint device;Check CANBus connection; check "steer type" parameter; Replace component (I5) 38 Component does not log on, self test not concluded. F, H, L, 12, 13, 14, C, A, M, S, F-AC, H-AC CONTROLLER / CAN Check CAN-Bus connection and voltage; check DIL switch 7 encoding (MP1510); steering controller monitoring activated? (AS2412F); check ACS encoding; replace component No travel, lifting Warning symbol Flashing warning (Else-Check). 39 Implausible truck type 1. Discovered during the self test phase that at least one component has a different truck type as a parameter. A different truck type was discovered in operating mode. Caused by intermittent contacts in the power supply connections F, H, L, 12, 13, 14, 15, A, M, F-AC, H-AC TRUCK TYPE For 1. Set truck type; For 2. Examine and if necessary replace switch (key switch) or rectify intermittent contact in power supply plug connections. Set truck type. 40 Motor overtemperature Traction motor overtemperature in operating mode. > 150°C And travel speed < 1km/h For ACS: Info > 145°C Err > 165°C L, F, H F-AC, H-AC TEMPERATURE MOTOR Warning; check motor sensor system and wire connections; Check motor; traction motor brake open? Reduced power for travel and lifting. Warning symbol flashing (Else-Check). For steering only warning symbol flashing. 41 Brake magnet potentiometer: Potentiometer voltage less than 0.3 volts or greater than 2.7 volts for more than 500ms. L BRAKE MAGNETPOTENTIOMETER Check potentiometer; check potentiometer attachment; check wire connection 42 - Short circuit between L F BRAKE MAGNET Check wire connection, check brake the output and battery magnet; replace component positive.(EJC, ELE) -Brake magnet control, below minimum difference on potentiometer for 500 ms when magnet applied. (150mV) No brake pressure during initialization. Brake pressure after the Emergency Stop magnet has applied; 43 Adjust brake L ADJUST BRAKE Adjust brake; check potentiometer 44 -Brake not connected or connection wire short circuit -Brake cable torn Only for steer category 3: Internal driver of failsafe brake cannot connect the relay or short circuit bypass (contact jams) on the output during power up test L,F BRAKE FAULTY Check brake wiring, replace brake if necessary -Replace brake cable, check potentiometer; Check potentiometer attachment; Only for steer category 3: -Check brake driver output; check switch contact plausibility, Replace steer component. No release 48 Does not match the "Steering type" parameter ETVQ steering wheel no pulses from stepper motor or 2nd sensor bearing. More than 10 pulses were obtained from the sensor bearing but fewer than 2 pulses were counted within 200ms from the stepper motor sensor bearing. L STEERING TYPE Set steering type correctly ETVQ: Check stepper motor coupling, tighten grub screw. Test both setpoint device branches, set defaults and truck type Otherwise faulty, replace component. 49 CAN supply interrupted; Supply above 14 volts or less than 10 volts, Can or sensor bearing incorrectly supplied AS 2412 F,H-AC CAN Bus CAN supply Supply on CAN connector greater than 14 volts (electrical system short circuit, component) Travel disabled 50 NRG Multiplot wire breakage Horizontal tilt M Setpoint device horizontal Check Multiplot wire connection Parameter 540 set to 1 by mistake Travel and lifting disabled. 51 Teach-In: steering actual value potentiometer L Incorrect setting SETTING Repeat calibration, check wire connection;check potentiometer;replace component 52 Teach-In: Brake magnet potentiometer L Incorrect setting SETTING Repeat calibration, check wire connection;check potentiometer;replace component 53 Teach-In: Steering setpoint potentiometer L Incorrect setting SETTING Repeat calibration, check wire connection;check potentiometer;replace component Error Description Component Display text Cause / Action Effect 54 Motor wire breakage during power-up test ETVQ: Temperature voltage level less than 0.3 volts or greater than 2.7 volts L, F, H MOTOR WIRE BREAKAGE Check wire connection; Check temperature sensor lines; replace component; replace motor 55 Motor short circuit; Current not ok; Power stage faulty L, F-AC, H-AC SHORT CIRCUIT MOTOR Check wire connection; Replace motor; Replace component Traction motor stops, Hydraulic motor stops Warning symbol flashing (Else-Check).



56 Motor or actual value transmitter incorrectly connected L,F,H MOTOR REVERSE POLARITY Check motor connection; check actual value transmitter potentiometer; AC: Phases L1,L2 or L3 swapped on motor; 57 No actual value change Motor turns despite control signal L, F,H Steering controller ACTUAL VALUE TRANSMITTER Check motor; check actual angle potentiometer; rectify mechanical wheel block; AS4803L: Check incremental bearings; replace component. AC: Check actual value transmitter wire breakage signals PM2402L check operating mode 58 Steering angle actual value fluctuates ETVQ: Reference mark 0° could not be started within 5 seconds or no valid segment reached. Steer motor does not turn L STEER ACTUAL ANGLE Check actual value transmitter (on steer motor) Check steer motor, fuse and incremental bearing, rectify mechanical wheel block; Check proximity switch distance. 59 Steering angle nominal value fluctuates L Steer angle setpoint device TILLER POTENTIOMETER Check setpoint device potentiometer (on tiller) 60 Swivelling bolster does not follow steering wheel directions Deviation of > 15° for 100ms The wheel turns more than 5°without change of nominal value on steering wheel, less than 2°/sec after reaching the nominal position. Tyres under-tensioned, the actual value cannot follow the nominal value. L STEERING CONTROL Check steering bolster mechanics; check chain and chain tension; check motor; check actual value transmitter attachment; Check tyres, replace wheel if necessary. 61 Power stage error L CONTROLLER Replace controller 62 Power stage error L CONTROLLER Replace controller 63 Sensor power supply out of range AS4803L: < 10V oder >16V L,F-AC,H-AC CONTROLLER The 12 volt supply not in valid range. Monitoring of 12 volt sensor supply greater than 15 volts and less than 11 volts. Switch controller off and on, replace fuse and controller if necessary. 64 Software version differs L CONTROLLER Different software versions in the AS4803Ls in the ETV-Q. Update software to same level. 65 NRG Multiplot wire breakage centre shifter M Centre switch MP centre shifter Check Multiplot wire connection Parameter 540 set to 1 by mistake Travel and lifting disabled. 66 NRG Multiplot wire breakage 180° / 360° steering toggle M 180-360 switch MP toggle switch 180° / 360° Check Multiplot wire connection Parameter 543 set to 1 by mistake Travel and lifting disabled. 67 NRG-Multiplot setpoint device travel direction switch jams on MP when system starts M Travel direction MP setpoint device Check Multiplot switch, values in Judit MP teach window, recalibrate values Travel and lifting disabled. 68 Safety switch wire breakage 12, 13, 14, 15 DEADMAN Check wire connection to safety switch (deadman, seat switch); replace safety switch 69 Both lift and lower requested simultaneously 12, 15, FS LIFT/LOWERSWITCH Check wire connection; check switch 70 Component fails to respond responds incorrectly to self test F-AC, H-AC, M, S, A, 12, C SELF TEST Check displays on basic component (LED); note other error messages on basic card; Check wireconnectionsandcheck connector; check power supply behind the main contactor contact, in the event of an error the voltage will be much lower here than the rated operating voltage. Disconnect the positive supply from the components to target the error cause. One component overloads the testing voltage due to internal short circuit. The testing voltage arises by charging the internal capacitor batteries via a resistor to the level of the control voltage supply. No travel, hydraulics Warning symbol Flashing warning (Else-Check). 71 Lower potentiometer wire breakage 12, FS LOWER POTENTIOMETER Check wire connection; replace lower potentiometer; replace Multiplot; replace interface 72 No lowering zero position 12, FS LOWER RESTPOSITION Warning, check lower setpoint device 73 Valve output interface faulty 12 VALVE OUTPUT Warning, check valve outputs 74 Interface valve output faulty 12 INTERFACE FAULTY Replace interface 75 Proportional valve does not draw any current Correct Multiplot ?? 12,14,C PROP. VALVE Check wire connection, replace proportional valve;replace Canion / interface; replace proportional valve Flashing warning symbol (Else- Check). 76 Proportional valve short circuit 12, 14C PROP. VALVE Check wire connection, replace proportional valve;replace Canion / interface; replace proportional valve Flashing warning symbol (Else- Check). 77 Button wire breakage 12, BUTTON WIRE BREAKAGE Check wire connection; replace button; replace interface 78 Button and travel switch pressed simultaneously 12 BUTTON / TRAVEL SWITCH Warning: Check wire connection; replace button; replace interface 79 Switch and deadman switch pressed simultaneously 12 BUTTON / DEADMAN Warning: Check wire connection; replace button; replace interface 80 2 travel directions simultaneously 12 ELECTRICAL SYSTEM Check wire connection; replace button; replace interface 81 Different parameters for the two traction controllers F, F-AC MOTORS reset parameters (EPG traction controllers) Travel inhibited 82 Sensor wire breakage 12 ELECTRICAL SYSTEM Safety height: Check wire connection; replace button; replace interface Error Description Component Display text Cause / Action Effect 83 2 of the same components report on thetruck e.g. AS4803L: Key switch voltage cannot be assigned to components Elle\_1, Elle\_2 or Elle\_3 F, H, 14, F-AC L-AC ELECTRICAL SYSTEM Check component encoding; check wire connection; replace component; Travel inhibited 84 Faulty speed sensor; à AS4803L: - Speed changes by 50% within 4ms; - Reference speed less than half the rated speed; - Steer transmission blocked; - Tear identification: a valid sensor reading is reduced to zero within 4ms and remains at this level for 50ms without producing a new valid reading. à PM2402L/2 from V1.60: - Too many pulses on encoder 3 on steer motor F,H,L-AC SPEED SENSOR Check speed sensor; Sensor bearing drift; Check wire connection; Replace speed sensor; Replace component; Check wire routing, do not route together with motor supply wires! Travel stop, Lift stop, Flashing warning symbol (Else- Check), hydraulic functions enabled. 85 Power release low voltage Travel/Steer: Capacitor voltage drops to 30V (48V) for 0.5 seconds F,H-AC L-AC ELECTRICAL SYSTEM TRAVEL Switch truck on and off; check battery; check battery cable connections; check fuse; Check power connections; replace component Travel, hydraulics no function, warning symbol Flashing warning (Else-Check). 86 Improbable speed, sudden change: à AS4803L: 2 sensor systems differ from each other. à PM2402L/2 from V1.60: Encoders 3 and 4 supply different sensor signals F,H-AC L-AC IMPLAUS Check wire connection; Replace speed sensor; Replace component; Speed counts correct: 8 or 64 pulses/ revolution? Check wiring and plug connections, check wire routing, do not route together with motor supply wires! 87 Sensor line interrupted AS4803L: no voltage drop on a 100 Ohm internal measurement resistor MFC brake: load wheel speed sensing F-AC L-AC MFC brake Electric DISCONNECTION SENSOR BEARING Sensor wire disconnected, motor consumes maximum current and makes buzzing noise.



Check sensor wires. 88 Hydraulic speed sensor faulty on AS4814H (AS4814H) SPEED SENSOR H Check speed sensor; Check wire connection; replace speed sensor; replace component; Hydraulics stop, Flashing warning symbol (Else- Check), travel enabled. 89 Hydraulics power release low voltage H ELECTRICS- HYDRAULICS Check battery, check battery wire connection; Check fuse; replace component Reduced power for travel and lifting. Warning symbol flashing (Else-Check). 90 Travel with handbrake on C ELECTRICAL SYSTEM Check magnetic brake switch Flashing warning symbol (Else- Check). 91 24 volts out of range Info at <17 V Err at <15 V C ELECTRICAL SYSTEM Check power supply; check wire connection For a warning, only the warning symbol flashes (Else-Check). For an error, the truck stops. 92 Wrong component reporting on Canion M, S, A ELECTRICAL SYSTEM Check Master/Soloplot; check display; replace component Check jumper in XB 27 and XB 44 from pin 2 to pin 6, Travel, lifting function, warning symbol flashes (Else-Check). 93 ACS capacitors not charged F, H, C ELECTRICAL SYSTEM Check charging connection, main contactor does not apply, check bus voltage, check transformer, fuses and cable set, Replace component Travel, lifting no function, warning symbol flashes (Else-Check).



94 SDO error F, H, C SDO ERROR Software incompatible check software version Reload software. Check jumper in XB 41 from pin 12 to pin 13. Travel, lifting no function, warning symbol flashes (Else-Check). 95 Pin code error C PIN CODE ERROR Component pin codes not identical Travel, lifting no function, warning symbol flashes (Else-Check). 96 No zero position for hydraulics Masterpilot. Solopilot, M,S Hydraulics zero position MP/SOLOPILOT Check Master/Solopilot; lift, lower, tilt, ZH1, ZH2, ZH3, horn switch not in zero position Replace component Hydraulic functions stop, "Warning" symbol flashes (Else-Check), travel enabled 97 Segment beyond tolerance limits à PM2402L/2 from V1.60: Referencing error on power up, no switch signal from proximity switch (NS) or time interval exceeded L FAULTY SEGMENT Segment on swivelling bolster not within tolerance level. Check wiring and proximity switch, check distance from switch to trip cam on swivelling bolster 98 The position of the sensor bearing and proximity switch (segment) deviate by more than 1.1 degrees. When the truck starts up, the direction of rotation from the steering wheel sensor system to the motor power connection or the steer motor sensor system is inverted. à PM2402L/2 from V1.60: Referencing error during operation, unexpected switch signal from proximity switch. L POSITION DEVIATION Check wiring. Check wiring and proximity switch, check distance from switch to trip cam on swivelling bolster 99 CAN Bus damaged; CAN Bus driver temporarily deactivated F,H,M,S,A. 13, 14, C CAN-BUS Check wire connection, check terminal resistors, install track anti- interference measures; Travel, hydraulics no function, warning symbol flashes (Else-Check). 100 NRG software versions of internal component parts implausible M Multi pilot software Replace component part with corresponding component, as flashing currently not possible in the field. 101 Input / output error JUBES Jubes input/output Check I/Oa, rectify contact error, check operating voltage, replace external transmitter Index info in display: a-- Sensor 1 supplies values, but not defined. Check parameters 11-17 b-- Sensor 2 supplies values, but not defined. Check parameters 20-26 c-- Sensor 3 supplies values, but not defined. Check parameters 29-35 Or a sensor 1-3 supplies a voltage outside the range of 0.5V - 9.5V. Shown in the driver's display with error 101 102 Internal error JUBES Jubes internal Check operating voltage. Index info in display: a -- Communication between access module and data recording faulty, check connection e -- Radio module faulty f -- Radio channel number is "0", should be >0, check parameter 100 g -- Radio transmitting power is "0", Check parameter 101 h -- Lock number is invalid, replace access module i -- Impact sensor faulty, replace data recorder Shown in the driver's display with error 102 103 Parameter error JUBES Jubes parameters Set parameters Index info in display: a -- Parameter 5 greater than parameter 6, should be smaller. b -- Differential value of parameter 11 is greater than the differential values of the various stages of parameters 12-17 c -- Differential value of parameter 20 is greater than the differential values of the various stages of parameters 21-26 d -- Differential value of parameter 29 is greater than the differential values of the various stages of parameters 30-35 e -- the stages of parameters 12-17 ... f -- the stages of parameters 21-26 ... g -- the stages of parameters 30-35 ... h -- Impact stages of parameters 47-49 ... i -- Impact stages of parameters 50-52 ... are not in increasing order Shown in the driver's display with error 103 104 Sensor bearing provides no pulses on system start up F,H (SENSOR BEARING) Check sensor bearing and wire, replace sensor bearing or controller 105 Motor temperature gauge provides incorrect values Sensor line wire breakage F,H,L Temp.Motor Check sensor connection and lines, if possible replace sensor, otherwise replace the entire motor... 106 Controller temperature gauge provides incorrect values F,H,L Temp. controller Internal error, replace controller. 107 Key switch voltage out of range Hardware encoding incorrect F,H,L MFC hydr. MFC brake Electrics Error in controller connection (Saab connector) on component No travel No lifting No steering Main contactor open 108 Calibration reading incorrect F,H (CONTROLLER internal) Internal error, replace controller. 109 Brake pedal faulty MFC brake BRAKE PEDAL Brake pedal signals implausible 110 Current output faulty MFC brake MFC hydr. MFC option CONTROLLER Check outputs for short circuits MFC Hydr.: no lifting MFC Brake: crawl speed only 111 Steering controller is monitored by traction controller for signs of life telegrams The Can Bus is overloaded. F Traction controller Check Can Bus, measure terminal resistor 600Ohm 113 Lift controller does not send lift telegrams H LIFT CONTROLLER 114 No traverse distance reference on power up MFC hydr. Info 32 Traverse reference None Reduced traverse speed until both stops have been reached once. 115 Main contactor improbable, contacts not closed. Wire connection interrupted, faulty main contactor driver on traction controller F,H,L ?? Main contactor improbable Check wire connection. If error 19 is also present, disconnect the shorted power stage Disconnect the power positive.

Check driver voltage (switched against negative). If reading OK, check contactor coil and mechanics. No truck functions 116 After software flashing (field operation), the item number of the software is implausible and parameters may also be implausible. F,H, MFC brake MFC prop Info 54 SET TRUCK TYPE Set truck type and switch truck off / on (wait approx. 35 seconds). On request, automatically: all parameters are set to default, the software item number is set to plausible, the log book is deleted, the hourmeter set to zero and entry 116 made in the log book. In the log book only error 116 stands as a marker for this process and all parameters can be at default. 117 Cab position implausible, rotary potentiometer value does not match 180 degree switch CANION Cab position Check rotary potentiometer, re-adjust if necessary, check 180 degree switch No TRAVEL release 118 Steering controller reports error L Steering controller Check display on steering controller TRAVEL inhibited, EMERGENCY STOP activated 119 Weigher button faulty MFC brake Button faulty Check wire and button Weighing interrupted 120 Weigher pressure sensor faulty MFC hydraulics Sensor faulty Check wire and sensor Weighing interrupted 121 Battery incorrectly locked F-AC Battery lock Locking strips stuck. Check proximity switch No truck functions 201 Optical sensor faulty Rack height select sensor A C = 064 Display / Operation (LISA / JULIA) C = 065 Display / Operation (Else-Check) C = 066 Display/Operation (CANCode) C = 067 Display (CANDis) C = 068 Display/Operation (on board computer) C = 3 Comfort display [CANopen] C Canion (Atlas Copco) [CANopen] C = 1 - Master C = 11 - Slave F C = 016 Travel (MP1510C / AS2405F / AS2409K / AS2412F) C = 016 Travel 1 (MP1514F / AS4814Fplus) C = 017 Travel 2 (MP1514F / AS4814Fplus) F-AC C = 016 Travel (AS4812/14F) C = 8 ACS Traction (Atlas Copco AC 8011/18, Imotion) [CANopen] Travel switch C = 096 Can-Bus travel switch H C = 032 Lift (MP1514H / AS4814Hplus) H-AC C = 032 Lift (AS4814H) C = 7 ACS Pump (Atlas Copco AC 8011/18, Imotion) [CANopen] Rack height select C = 128 Rack Select 1 C = 21 I/O-Board 1 [CANopen] C = 22 I/O-Board 2 [CANopen] C = 23 I/O-Board 3 [CANopen] C = 24 I/O-Board 4 [CANopen] I2 C = 146 Interface 2 C = 155 Interface 2 C = 156 Interface 21 C = 157 Interface 21 C = 147 Interface 3 I4 C = 148 Interface 4 = MFC\_brake 15 C = 149 Interface 5 I6 C = 150 Interface 6 = MFC\_Prop 17 C = 151 Interface 7 I8 C = 152 Interface 8 = MFC\_Option Jubes C = 069 ISM Access Module C = 29 ISM Access Module [CANopen] C = 070 ISM-Data recorder C = 071 ISM-radio module L C = 048 Steer (MP1502L / PM2402L / AS4803L) C = 048 Steer 1 (AS4803L) C = 049 Steer 2 (AS4803L) C = 050 Steer 3 (AS4803L) C = 4 Steer computer [CANopen] M C = 096 Multipilot / Masterpilot C = 2 Multipilot / Solopilot [CANopen] S C = 112 Solopilot / Hand lever Travel set point device: travel potentiometer, accelerator pedal Steering actual value transmitter: steer potentiometer, proximity switch (on steered wheel) ONLY in 1st generation! All messages numbered above 100 come from the interface and correspond to messages 1-xx-99! Warning Information Messages INFO 01 SEAT SWITCH OPEN INFO 02 NO TRAVEL DIRECTION INFO 03 NO TRAVEL RELEASE INFO 04 NO NOMINAL VALUE INFO 05 LIFTING OFF INFO 06 DEADMAN KEY OPEN INFO 07 START INCORRECT INFO 08 PARKING BRAKE INFO 09 SLOW SPEED INFO 10 TEMPERATURE DRIVE MOTOR INFO 11 TEMP LIFT MOTOR INFO 12 TEMP STEER MOTOR INFO 13 BRUSH WEAR OUT DRIVE MOTOR INFO 14 BRUSH WEAR OUT LIFT MOTOR INFO 15 BRUSH WEAR OUT STEER MOTOR INFO 16 DRIVING DISABLE INFO 17 LIFT END DIS. INFO 18 SECURITY HEIGHT INFO 19 DOOR OPEN INFO 20 AISLE MODE INFO 21 RESCUE STEERING INFO 22 STEERING MISSING INFO 23 DIAGNOSTIC MODE INFO 24 SWITCH POWER OFF INFO 25 TEMP TRAVEL INFO 26 TEMP LIFT INFO 27 TEMP STEER INFO 28 SPARE 1 INFO 29 DISPLAY SWITCHES THE EXTERNAL BUZZER INFO 30 TWIN PEDAL BOTH APPLIED INFO 31 NO ZERO POSITION INFO 32 NO TRAVERSE REFERENCE ON POWER UP INFO 33 ONLY CRAWL SPEED POSSIBLE AS BATTERY NOT LOCKED INFO 34 ONLY CRAWL SPEED POSSIBLE, AS INFO FROM STEERING CONTROLLER INFO 35 LOW VOLTAGE TRAVEL INFO 36 LOW VOLTAGE LIFT INFO 37 LOW VOLTAGE STEER INFO 40 CHECK MOTOR SENSOR SYSTEM INFO 48 IMPACT EVENT VERTICAL FORCE 1 INFO 49 IMPACT EVENT VERTICAL FORCE 2 INFO 50 IMPACT EVENT VERTICAL FORCE 3 INFO 51 IMPACT EVENT HORIZONTAL FORCE 1 INFO 52 IMPACT EVENT HORIZONTAL FORCE 2 INFO 53 IMPACT EVENT HORIZONTAL FORCE 3 INFO 54 SET TRUCK TYPE INFO 73 CHECK VALVE OUTPUTS Jungheinrich Service Manual Jungheinrich DFG/TFG 660-690 Operating Instructions Models: DFG 670; DFG 680; DFG 690; DFG S80; DFG S90; TFG 660; TFG 670; TFG 680; TFG 690; TFG S80; TFG S90; DFG S80 Service Manual Models: TFG 680; DFG 670; DFG 660; DFG 680; DFG 690; DFG S80; DFG S90; TFG 660; TFG 670; TFG 680; TFG 690; TFG S80; TFG S90; Jungheinrich DFG TFG 316-435 Operating Instructions Models: TFG 430; DFG 320; DFG 425; DFG 430; DFG 435; TFG 316; TFG 320; TFG 425; TFG 435.

Jungheinrich EFG-Vac 22-30/ 25L/S/SL Service Manual Download Jungheinrich ECE 225 (90309857) Spare Parts Catalogue Download Jungheinrich EJC 110/112 Operating Instructions Download Jungheinrich DFG/TFG 16 - 50 A/B/C-K Operating Instructions Download Jungheinrich DFG 660 Service Manual Download Jungheinrich DFG 670 Service Manual Download Jungheinrich DFG S80 Service Manual Download Jungheinrich DFG TFG 316-435 Operating Instructions Download Jungheinrich ECE 225 Spare Parts Catalogue Download Jungheinrich EFG 213-320 Operating Manual Download Jungheinrich EFG-Vac 22 Service Manual Download Jungheinrich EFG-Vac 25L Service Manual Download Jungheinrich EFG-Vac 30 Service Manual Download Jungheinrich EJD 220 Service Manual Download Jungheinrich ERE 120 Service Manual Download Jungheinrich ETM 214 Service Manual Download Jungheinrich ETM 216 Service Manual Download Jungheinrich ETM 325 Service Manual Download Jungheinrich ETV 214 Service Manual Download Jungheinrich ETV 216 Service Manual Download Jungheinrich ETV 318Service Manual Download Jungheinrich ETV 320 Service Manual Download Jungheinrich ETV 325 Service Manual Download Jungheinrich EZS 330 XL Operating Instructions Manual Download Jungheinrich EZS 350 XL Operating Instructions Manual Download Jungheinrich SLH 200 Service Manual Download Jungheinrich TFG 660 Service Manual Download Jungheinrich Fault Codes Download Jungheinrich EJC112 & E1202 Event Messages Codes List. Download Jungheinrich Error Codes List Download Jungheinrich Fault Codes List Download Jungheinrich LISTADO ERRORES Download Jungheinrich System Error Codes list Download Jungheinrich System Error Codes list Download The manufacturer of forklifts is Jungheinrich, which is a leader in the production and sale of industrial, warehouse and material handling equipment. The company began its journey from 1953, when a small loader company was founded, and by 2011 the company had several factories at its disposal. Purpose Forklifts are mainly used to work in warehouses, but without them they are very rarely managed in large-scale industries. They carry loads that are placed on pallets.

Due to the version with a closed cabin, they are able to work even in places with unfavorable external environment, namely, with wind, dust, sparks, sawdust, steam, and so on. Electric Electric loaders are represented by 5 series, which differ in load capacity, low unloading height, technology, maneuverability, as well as convenience of the operator's workplace. 1 series EFG 110/113/115.

The letters mean that this is an electric forklift, the first number indicates the series, and the second two are the maximum carrying capacity in hundreds of kilograms. These are lightweight and compact loaders that have just one rear wheel. Thanks to these parameters, they have excellent maneuverability and can move even inside the truck body. However, these "kids" are able to work with a weight of from 1 to 1.5 tons and lift the load to a height of 6.5 meters.

AC control electronics may be updated. EFG 213/215 / 216k / 216 / 218k / 218/220. The index k near some models indicates that the model has a smaller battery, a shorter base and a shorter fork body. This series has the same dimensions and related benefits. However, the maximum load capacity is increased, as well as equipped with a large number of technologies. In the loader, an electric power steering was added, the ability to independently configure 5 work programs, replace batteries, a more thoughtful security system, an automatic parking brake, smart electronics, and a maintenance-free brake system and electric motor. The case in these loaders is integral, which provides greater stability when maneuvering. EFG 316 / 316k / 318 / 318k / 320. The main differences between these trucks from previous models is that they have 4 wheels and a fully enclosed cab with front and rear window clearance. The control system is now electro-hydraulic, which provides better handling. Cab spaces were enhanced, and the lighting system and battery compartment received additional protection. EFG 540k / 540 / 545k / 545/550 / S40 / S30. These are the most powerful and big electric lift trucks. The maximum unloading height has also been increased, but only to 7.18 meters. You can use various packages of additional functions that determine the operation of the loader. In this series, more attention is paid to operator safety, as well as comfort and ergonomics of the workplace.