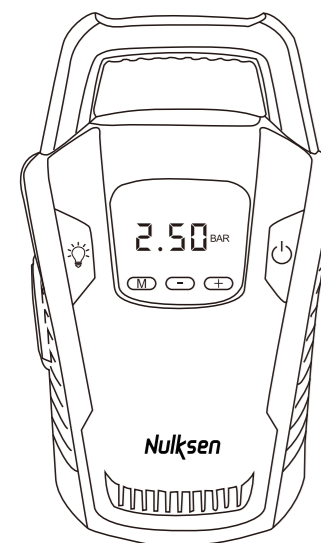


Nulksen

CAR AIR COMPRESSOR

(Please read this manual in detail before use)

User Manual



CZK3650

Contents

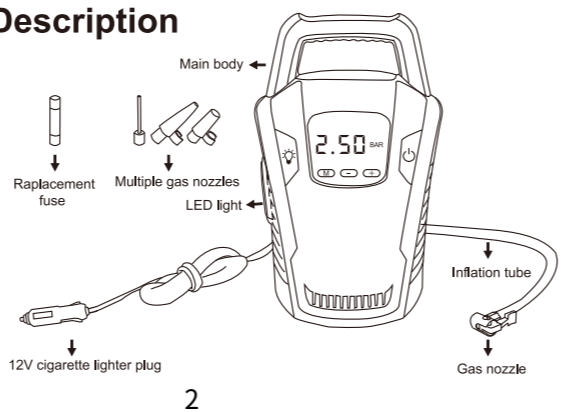
- Safety Instructions 2
- Product Description 2
- Accessories 3
- Preset Tire Pressure 3
- Operating Instructions 4
- Specifications 4
- Features 5
- Using Tips 5
- Customer Service 5

1

Safety Instructions

1. Read and follow all instructions before use.
2. Keep the product out of reach of children.
3. Do not expose the air inflator to rain or water of any kind.
4. Do not use the product for applications outside of its intended use.
5. Do not disassemble and assemble this product without permission.
6. Do not store the air inflator in high temperature or humid environments.
7. Do not place the air inflator near hot sources, such as your vehicle's exhaust pipes.
8. Do not use the air inflator near flammable liquids or in gaseous or explosive atmospheres.
9. Check inflation tube for weak and worn conditions before each use, make sure all connections are secure. Don't use if the defect is found.
10. Do not use the air inflator if the power button doesn't power it on or off. An inflator can't be controlled by power button is dangerous.
11. Keep the air inflator dry, clean, and free from oil and grease. Please use dry cloth to clean it.
12. When not in use, disconnect the air inflator from all power sources.
13. Connect the air inflator to a 12V DC, 10A cigarette lighter. Do not use with a 24V connection.

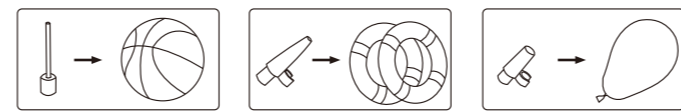
Product Description



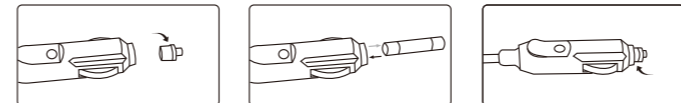
2

Accessories (This product has the accessories as follows):

One replacement fuse¹, and three multi-functional gas nozzles².



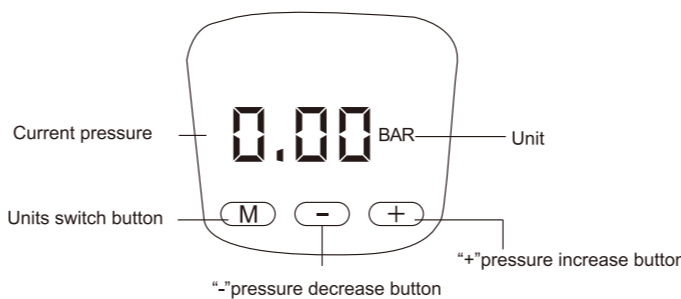
Steps for changing fuse:



1. Unscrew the nut on cigarette lighter.
2. Take out the used fuse and replace it with new fuse.
3. Screw the nut on cigarette lighter and finish the replacement.

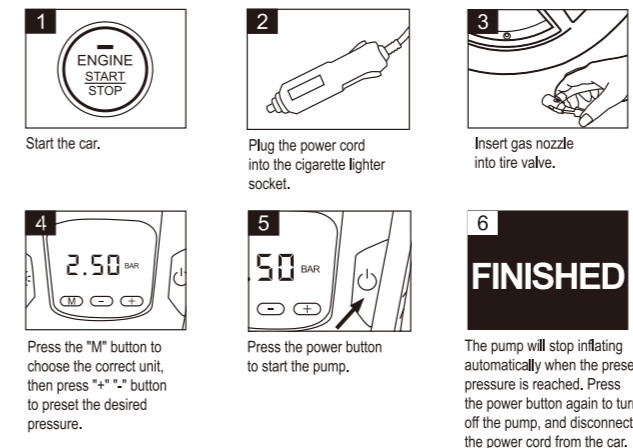
Preset Tire Pressure

Press the "M" button to choose the correct unit, then press "+" or "-" button to preset desired tire pressure. Wait for a few seconds until the number stops flashing. Then press the power button to start the tire inflator to inflate. The air inflator will automatically stop inflating when it reaches the preset pressure.



3

Operating Instructions



*The pump has LED light which provide convenience in the dark night

Specifications

Product Name	Car Air Compressor
Model No.	CZK3650
Input Voltage	12V DC
Power	120W
Max Pressure	120 PSI
Display Units	PSI, KPA, Bar, KG/CM ²

4

Features

1. Compatible with DC 12V, 10A cigarette lighters.
2. Preset tire pressure, automatically stop.
3. LCD display is easy to read and understand.
4. Super bright LED flashlight to use in dark environment.
5. Portable design makes it easy to carry and store.

Using Tips

1. Avoid extended and continuous use. The max time for continuous use is 15 minutes.
2. After extended use, let the inflator to rest for 10 minutes to continue to use it.
3. The inflation tube may heat up during continuous use, please don't touch it while inflating or after use. Let it cool down for a few minutes.

Customer Service

✉ service@nulksen.com

5

Nulksen

CE RoHS FC
Made in China