

Drycotec Diaries



**MAGIC OF
MORTARS**



Veendam, Netherlands

STARCH ETHERS FOR DRY MORTARS

innovation by nature
since 1919

- LARGE FORMAT TILES
OPEN TIME, ANTI SLIP, ETC
- RENDERS (PLASTERS)
BOUNCE-BACK REDUCTION,
ANTI-SAG, ETC
- SKIM COAT (PUTTY)
WORKABILITY, STICKINESS
REDUCTION, ETC
- AND MUCH MORE

Take the **LEAD** with Avebe's state of the art, *potato-based starch ethers* for dry mortars.
Jobs get done faster, and better; resulting in **cost savings**.



Explore how we can help lift your dry mortars to the *next level* in performance and cost efficiency.
Get the job done right the first time
with Avebe Starch Ethers

OPAGEL®

SOLVITOSE®

CASUCOL®

ADDILOSE®

SKIM COAT

TILE ADHESIVE

RENDER

PUTTY

JOINT FILLER

SPRAY MORTARS

Applications : Cement
Skim Coat & Putty
Tile Adhesive
Manual Renders
Spray Renders
Repair Mortar

Benefits : Cement
Workability
Anti slip / Anti-Sag
Thickening
Open time
Adjustment time
Cost reduction
Bounce back reduction
Application Speed


Applications : Gypsum
Manual Plaster
Finishing plaster
Spray plaster
Joint filler
EIFS
Spot Glue

Benefits : Gypsum
Anti-sag
Thickening
Workability
Working time
Smoothness
Surface hardness
Reduce chalking
Application Speed



Distributed in India by
IMCD India

Coöperatie Koninklijke
Avebe U.A.

Click links
to 
contact us

[IMCD \(imcdgroup.com\)](http://IMCD (imcdgroup.com))
Karan.Ghelani@imcd.in

www.avebe.com
Jagdeep.Singh@avebe.com



* Benefits are also dependent on quality of ingredients, formulation and optimisation of blend.



THE FAVOURABLE RESULT

For all those who are waiting for a favourable result on 4th June 2024, I have something to say. We are the common citizens of India. Our vote counts. The results of the election will certainly change the mood. Does it change our lives ?, well, Yes & No. Yes, because it will change the overall scenario, investments, decisions, projects etc. & therefore help us. No, because we still need our own hard work and performance to sail in the favourable sea. Good days will come not because of elections, but also due to our contribution towards work and family.

THE UN-FAVOURABLE RESULT

A shock, but a possibility. Undercurrents are present in every organization. Un-favourable results could complicate the situation, delay the decisions, put a stay order on many works and other possibilities. As a common citizen, we can still do well. Take more efforts. Struggle in multiple areas. Try learning and upgrading ourselves. No point in crying over spilt milk. Get up and go.

THE GOOD LUCK

Good people are always lucky. Those who plan in advance, work hard, add skills etc., are always lucky. Success comes over night for those who have consistently delivered for multiple days and nights. Instant Success is like lottery. Wining a lottery in my opinion is the worst thing that would happen. Those who win in lottery/gambling/online rummy, spend at least 10 times more money for the same venture throughout their lifetime and turn out to be big time losers.

THE BAD LUCK

Bad things do happen and we cannot do anything about it. Global warming is causing detrimental effects. Recent incident of torrential rain in Dubai was to prove this point. It indicates that we have to become proactive in our approach. Be prepared to lose at least 20 working days this monsoon due to flooding. Not a good idea to keep a major launch or event or family function till September, unless critical. Our mistakes, our inefficiencies and our personal failures are sometimes linked and create something which may lead to "bad luck".

THE FAMOUS FUNDAMENTAL

BCG describes it very well in their matrix. They have named 4 type of situations. "Star" is the name for a situation where market growth is High & your share is also growing. Low market growth and low market share is called "Dog". When your share is low and the market is growing, they call it "Question Mark". The most important is the 4th, it is called "Cash Cow", where your share is growing even when the market is slowing down.

Always be the Cash Cow, ready to growth and succeed in any kind of situation. Don't wait for 4th June, just do your work with full focus, honesty and integrity. Keep reading Drycotec Diaries.

DRY MIX MORTAR PLANT

Mortar | Grout | Tile Adhesive | Black Box | Putty | Green Sand



- 
- 
- 
- 
- 
- 
- 
- 
- 
- 
- 
- 

NEPTUNE PROTECH LLP.

+91 8652116480, +91 90337 28672

info@neptuneprotech.com neptuneprotech.com





Drycotec Drymortar Association Presents
Conference on Emerging Technologies

18TH OCT 2024, BOMBAY EXHIBITION CENTRE, GOREGAON, MUMBAI

Conference Agenda

10.30 – 11.30

- Panel Discussion on The Business of Adhesives
- Presentation by Partner

11.30 – 12.30

- Panel Discussion on Dry Concrete & Other Game Changing Products
- Presentation by Partner

12.30 – 13.30

- Panel Discussion on The Drymortar Business 2030 – Aspirations
- Presentation by Partner

FOR MORE INFORMATION, CONTACT

Dr. Mandar Chitre ☎ +91 98231 58583 ✉ mandar.chitre@batonconsultants.com

Saiprasad Terde ☎ +91 99200 50415 ✉ saiprasad.terde@informa.com

www.woc-india.com

Aao Haansil Kare **Safalta Ki Nayi Manzil!**

Join us to celebrate our partnership in this journey of a successful business.

Join us at QUARRY FORWARD Conference for:

- ▶ Valuable insights from industry leaders on future trends and strategies
- ▶ Recognition and celebration through awards and felicitations
- ▶ Networking opportunities with peers and experts
- ▶ Enjoyment and camaraderie

Register to Attend!

Quarry Forward Conference 2024

December 13th, 2024, at IEML, Greater Noida.



bauma CONEXPO INDIA

11 Dec. - 14 Dec. 2024

India Expo Centre, Greater Noida / Delhi NCR

For More Details:

Dr. Mandar Chitre

T: + 91 9823 158 583

E: mandar.chitre@batonconsultants.com

My Global Diaries : Use of Pozzolanic Materials in Mortars (Part 1 of 2)

Four Researchers, Her-Yung Wang, Shen-Lun Tsai, Taiwan Ting-Yu Jian from the Department of Civil, National Kaohsiung University of Sci and Tech, & Chang-Chi Hung, from the School of Architecture and Civil Eng, Huizhou University, China, have written a research paper on the use of Pozzolanic materials in Mortars. We have published some of their work.

How to save energy and effectively use resources has become the goal of all countries. In Taiwan, except for blast furnace slag that can partially replace cement consumption, other steelmaking slags such as desulfurization slag, electric arc furnace (EAF) slag, etc., are in R&D stage.

This study added fixed proportions of fly ash, GGBFS & different proportions of stabilized stainless steel reduced slag (SSRS) to replace cement%, make envi friendly cement mortar.

Chemical composition of test materials.				
Chemical composition (%)	Materials			
	Cement	Fly ash	GGBFS	SSRS
SiO ₂	19.60	50.79	33.5	23.7
Al ₂ O ₃	4.40	4.97	14.7	4.20
Fe ₂ O ₃	3.10	7.87	0.40	1.21
CaO	62.50	5.68	41.2	48.60
MgO	4.90	1.72	6.40	8.10
LOI	-	3.10	-	-
SO ₃	2.20	0.30	0.60	-
Cr ₂ O ₃	-	-	-	0.01
K ₂ O	-	-	0.30	-
Na ₂ O	-	-	0.20	-
TiO ₂	0.50	-	0.50	-
P ₂ O ₅	0.11	-	0.01	-
f-CaO	0.70	-	-	-
C ₃ S	5.60	-	-	-

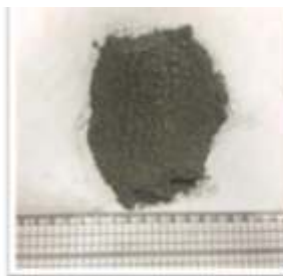
Mixture proportions of cement mortar. Unit: kg/m ³							
W/B	GGBFS	Fly ash	SSRS (%)	SSRS	Cement	Sand	Water
0.4	87.20	43.60	0	0	437.0	1534.9	249.7
			5	30.70	405.8		
			10	61.40	374.6		
0.5	76.50	38.27	0	0	383.5	1534.9	274.0
			5	27	356.1		
			10	53.90	328.7		
0.6	87.20	34.09	0	0	341.72	1534.9	292.91
			5	24.02	317.32		
			10	48.04	292.91		

Physical properties

Items	Physical properties
	Specific Gravity
Cement	3.15
Fly Ash	2.20
GGBFS	2.90
SSRS	3.10
Fine Aggregate	2.65



(a) Cement



(b) Fly Ash

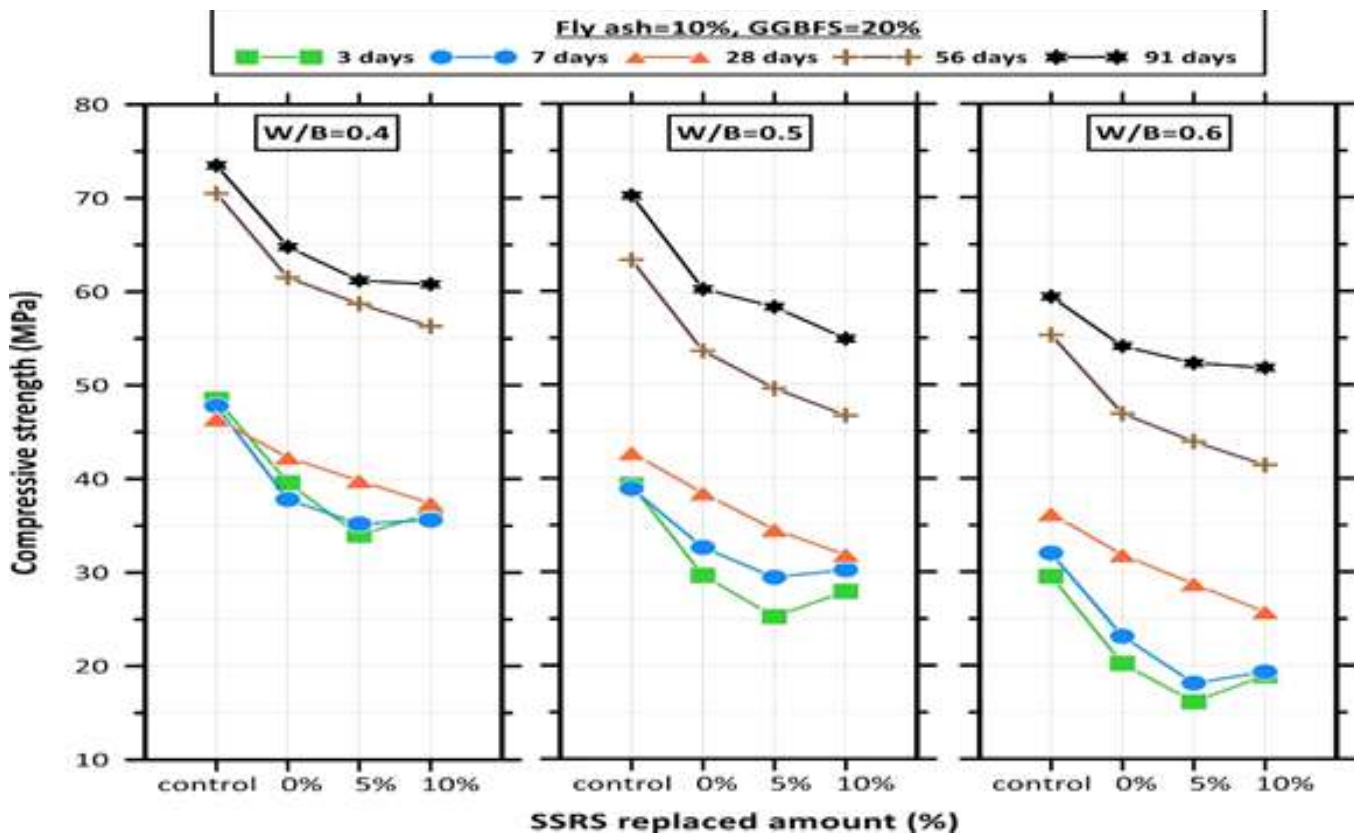


(c) GGBFS

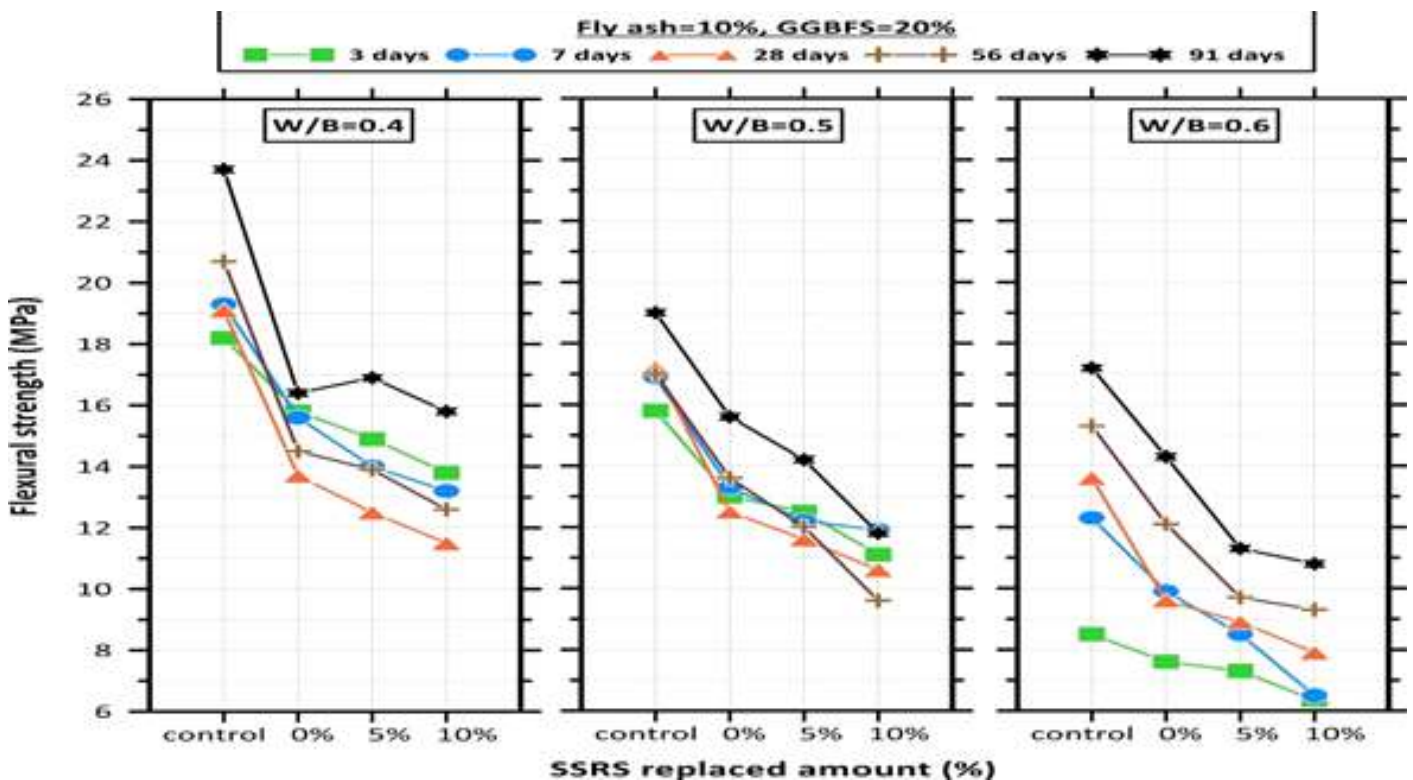


(d) SSRS

The compressive strength increases with increasing curing age. When the amount of SSRS RM increases from 5% to 10%, the compressive strength, tensile bending, and tensile strength of cement mortar decrease, which indicates that an increase in the amount of SSRS RM will lead to the mortar strength decrease. Although an increase in the W/B ratio more easily makes cement particles hydrate and produces more Ca(OH)₂ to promote the Portland reaction of fly ash and GGFBS. This change will increase the water-filled space of the specimen and a large number of pores, resulting in the reduction of compressive, flexural, and tensile strength. An increase in the W/B ratio will reduce SSRS activity in the bonding reaction with calcium silicate is insufficient, resulting in a decrease in hydration products and limited strength development of mortar. Overall, the engineering strength of SSRS to replace 10% of the cement is reduced by about 10%.



To guarantee the engineering properties of cement mortar specimens after solidification, this study showed that when a Portland material of 10% fly ash and 20% GGBFS replaces cement, the 5% SSRS RM yields the best properties. These industrial byproducts will effectively contribute to energy savings, carbon reduction, and resource reuse. To strengthen the engineering properties of the resulting concrete, suggest using a lower W/B ratio, mixing a suitable amount of GGBFS and fly ash to replace cement, and limiting the SSRS RM to 10%. That will ensure its engineering properties after 28 days of curing age meet the requirements.



The entire research paper can be downloaded on the following website as link <https://www.sciencedirect.com/science/article/pii/S2214509522002765>



Readymix Construction Machinery Pvt. Ltd.

"DISCOVER OUR REDESIGNED WEBSITE!"



Visit Us: www.rcmpl.co.in



A New Chapter in Innovation: RMX Launched Redesigned Website

In a significant stride towards digital transformation, RMX is proud to announce the launch of our newly redesigned website. This initiative is more than just a digital makeover; it is a step forward in our commitment to enhancing user engagement and operational efficiency. We've designed this website with you, our valued users, in mind, to provide a seamless and enriching experience.

Our Digital Evolution:

With a rich history of innovation in Drymix Mortar, Wall Putty, Sand & Batching support Equipment manufacturing, RMX has always been at the forefront of the industry. Our new website, a testament to our leadership, offers a seamless user experience with enhanced navigation and accessibility. It's a one-stop platform where you can learn about our journey, explore our innovative products and services, and stay updated on our upcoming product range.

Enhanced Features for an Enhanced Experience:

- **Who We Are:** Discover our journey, mission, and the values that drive us.
- **Our Products & Services:** Explore our extensive range of customized solutions catering to various Construction Industry segments.
- **How We Work:** Get an inside look at our processes and how we maintain quality and efficiency.

Join Us on Our Journey:

We invite you to visit the new www.rcmpl.co.in to not just witness, but to actively participate in shaping the future of the construction industry. Your insights and feedback are invaluable in this journey of innovation and progress.

Your feedback is crucial to us. It's what drives us to keep improving and innovating. We value your thoughts and product inquiries, so please share them with us at marketing@rcmpl.co.in.

Upcoming Updates:

- **Product Launches:** Stay tuned for the introduction of new products designed to meet the demands of modern construction challenges.
- **Expanded Content:** Expect more in-depth articles(Blogs), Case Studies, video tutorials, and client testimonials, providing a richer understanding of the Product range and its applications.

As RMX grows, so does our commitment to integrating digital solutions that enhance our service offerings and customer interactions. This website relaunch marks a pivotal moment in our journey, reflecting our dedication to excellence and innovation.

We deeply appreciate your continued support. We are thrilled to welcome you to the new digital home of RMX and look forward to serving you better.

Readymix Construction Machinery Pvt. Ltd.

Corporate office: Survey No.96/2B, Plot No.209, Fourth Floor, Near Pandit Bhimsen Joshi Park, Right Bhusari Colony, Paud Road, Kothrud, Pune - 411 038. India.

Contact us - 9764448561/64, 8956166579 | info@rcmpl.co.in | www.rcmpl.co.in

My Tech Diaries : Role of Polymers



Sanjay Chitnis, Retired Sr. Vice President (Technical Services), JK Lakshmi cement Ltd. has almost four decades of experience in the field of cement. He is an engineer from the COEP college in Pune, has done his MDI program from Indian Institute of Management, Calcutta, Indian Institute of Management, Lucknow & Indian Institute of Management Ahmedabad. He has also done his MBA from Annamalai University.

Mr. Chitnis is very punctual, down to earth, smart with Sound civil engineering knowledge coupled with administration & managerial capabilities. He loves writing short articles on Sundays on LinkedIn. We have taken one such very interesting article from him for the benefit of our readers.

Polymer-modified concrete and mortar are promising construction materials for the future.

Dry mortar is typically made by mixing cement, selected sand & performance-enhancing additives in precise proportions. Mortar shall be of the mix proportions necessary to achieve adequate strength and durability .It should be suitable for the type of masonry say bricks, AAC blocks, concrete blocks. Mortar strength depends on proper curing, there must be enough water to maintain the hydration process otherwise it will not harden properly.

Polymers quickly rearrange to form the thin layer of the protective film in mortar. This traps the moisture of water inside the layer and even on evaporation they remain entrapped which is used for curing purposes. Polymers reduce the rate of water evaporation, allowing the crystal structure to keep growing and building strength during these critical early curing stages. This reduced water evaporation is especially important in thin applications, where the surface area for evaporation is high, relative to the volume of the mortar

Certain polymers also prolong the hydration period, which can increase working time, an important characteristic in hot climates. This means contractors can use less water for workability purposes. The polymer acts as a water reducer, ultimately leading to a stronger mortar with fewer voids, or weak spots.

Polymer modifiers act as an adhesive to enable the modified mortar overlay to stick to a variety of surfaces such as concrete, masonry, brick, wood, rigid polystyrene and polyurethane foam, glass, and metals.

Cured polymer-modified mortars generally have improved tensile strength, flexural strength, impact and abrasion resistance, water resistance, and chemical resistance versus unmodified mortars. The polymer in the mortar helps restrain micro-crack propagation, which improves the overall toughness of the mortar.

Polymers also improve the impermeability, water resistance, and frost resistance of cement mortar by forming a mesh membrane structure that closes holes and cracks in the mortar, and reduces porosity

Polymer can be divided into natural polymer, synthetic polymer, semi-synthetic polymers. Some polymers that are commonly used e.g. Acrylics, Styrene-acrylics, Vinyl acetate ethylene (VAE), Polyvinyl acetate (PVA), and Styrene-butadiene resin (SBR) Many different types of polymers can be used in mortars, including latex polymers, re-dispersible dry polymers, and water soluble polymers.

Enhancing Valve Bag Sealing with

ADVANCED ULTRASONIC TECHNOLOGY



ULTRASONIC SEALING FOR VALVE BAGS



SPILL-PROOF TECHNOLOGY



SEALING BUILT IN WITH YOUR PACKER



IMMEDIATE SEAL AFTER FILLING



For more information
+91-93231 25586



www.vtcorpindia.com



sales@vtcorp.in

My Maintenance Diaries : Cleaning of the Mixer



Javed Mansuri, Plant Head & Technical Manager is an expert with 13yrs experience in Building material products, Readymix plaster, tile adhesive, dry mix mortar, block joining mortar, wall putty, AAC blocks, Bentonite grinding. He is currently working in Zambia and has given us this simple but effective article. The main mixer is where the raw materials like cement, lime, sand, and all powders are combined to form the mix. Any contamination or build-up in the mixer can alter the composition, leading to inconsistency in the end-product. The mixer is the heart of the system and it needs special care. The following activities are to be done to keep the mixer in good condition.

- 1. Weekly Maintenance** : Proper complete cleaning ensures that each batch of material maintains the same quality and meets required standards. Contaminants from previous batches or residue could impact the structural integrity, density, or other properties.
- 2. Switching Formulations** : Most manufacturers make a range of different products and each needs a different formulation & also different gradation of sands. Pneumatic pressure cleaning between batches avoid cross-contamination, which is critical when switching between different formulations.
- 3. Residue Build-Up** : Residue build-up in the mixer can lead to excessive wear and tear, potentially damaging the equipment over time. Regular cleaning helps maintain the longevity of the mixer and reduces the need for costly blades replacements. A clean mixer has less risk of blockages or slow mixing due to hardened material.
- 4. Operator's Risk** : An unmaintained mixer can be hazardous to workers due to debris build-up or malfunctioning parts. A clean mixer reduces the risk of injuries by overflowing or tripping. Also reducing the risk of fines/penalties(for operators and shift in-charge).
- 5. Break-down Reduction** : A clean mixer is less likely to frequent breakdowns. This helps reduce operating costs & can prevent more extensive and costly repairs later. A clean mixer ensures that the blades & other components function correctly, leading to better mixing performance and more uniform consistency.
- 6. Waste Reduction** : A single vehicle of rejection, creates 3 effects. 1st, financial loss. 2nd, brand image tarnished & 3rd, lowers the employee's morale about own product.
- 7. Delivery Delays** : Fast production by a clean mixer is less likely to cause unexpected production delays due to equipment malfunctions or slow mixing caused by accumulated residue.
- 8. Energy Saving** : Most important When the mixer is clean, it operates more efficiently, consuming less energy, reducing your monthly electricity bills.
- 9. Encourage Safety** : A well-maintained and clean work environment can boost employee morale. Workers are more likely to take pride in their work and follow safety protocols when the equipment and surroundings are clean and organized.
- 10. Environmental Impact** : By keeping the mixer clean, there's a lower risk of accidental spills or contamination. This can help minimize the environmental impact of production and contribute to sustainability efforts.



R.S. ENTERPRISES

FEATURES OF SINGLE SPOUT VALVE

TYPE PACKING MACHINE (RSIP-001)



OUTPUT/HR

300-350Bags./Hr

BAG HT

26inch. (Max.)

FILLING CAPACITY

20To50Kg.

MATERIAL

Cement, Putty,
Ready mix, other powder material

POWER CONSUMPTION

5 kw and 7.5 kw
(As per material type)

ACCURACY

Our Machine Operated at ± 150 Grams
Weight Variation to Filling for Each bag.
(20 kg - 50 kg)

Contractors told to allow outdoor work during cooler morning hours and avoid midday heat | Potential homebuyers given virtual tours, and other discounts in bid to drive sales

Realty Cos Draw up Plan to Protect Sales and Workers from Heatwave

Kailash Babar, Sobia Khan & Faizan Haidar

Mumbai | Bengaluru | New Delhi: The real estate industry is preparing for potential disruptions caused by the spread of heatwave across several states, taking proactive measures to mitigate its impact on construction activities and sales endeavours. The enquiry levels and sales across key property markets has so far maintained a robust momentum and developers are taking actions to ensure it continues.

Realtors are modifying their daily construction schedules by advancing the start of the day and delaying its end. Contractors have been instructed to conduct outdoor work during the cooler morning hours and avoid the midday heat.

"We have been implementing strict scheduling protocols to avoid outdoor work during peak heat hours, instead opting for early morning or late evening shifts when temperatures are relatively cooler," said Keval Valambhia, COO of developers' body Credai-MCHL. "These schedule adjustments are made within the construction timelines set by urban local bodies."

According to him, developers are instituting breaks for construction workers in the afternoon and

Beating the Heat

WORKERS GET...

- Breaks in afternoon
- Shaded rest areas on-site
- Access to medical assistance
- Access to clean drinking water, electrolyte replenishment solutions

BUYERS GET...

- Virtual tours and 3D walkthroughs enabling exploration from home
- Incentives like discounts & value-added services
- Promotion of energy-efficient designs

providing shaded rest areas on-site, along with access to medical assistance. They are being provided ample access to clean drinking water and electrolyte replenishment solutions to prevent dehydration.

"At our construction sites, we start early in the day and undertake many indoor activities such as floorings, internal plaster, and services in the second half. Also, we suspend heat radiation items like reinforcements and shuttering between 12 and 4 pm since workers cannot handle these materials. We ensure labour is supplied with potable water at many more locations than routine," said

V Gopal, executive director, projects and

planning, Prestige Group.

In Delhi-NCR too developers are taking measures like providing extra break hours, water sprinkles and provision of cold drinking water at sites to ensure comfort for workers and smooth operations.

"April 1 to June 30 is the peak construction period in NCR as the monsoon is not suitable for construction and in winter, we have a ban on construction due to pollution. But since the weather is very hot during this time, we give breaks to workers from 1 pm to 3 pm and majority of the work is done in covered areas," said Harshvardhan Bansal, president of Delhi chapter of developers' body NAREDCO.

Besides construction activity, the high temperatures may also cause disruption in sales and marketing efforts as potential homebuyers may be hesitant to venture out for property viewings. However, developers are also taking precautionary measures.

"Developers have revamped strategies to include more virtual tours and 3D walk-throughs enabling exploration from home. Incentives like discounts and value-added services are helping in stimulating demand, despite the heatwave. Promotion of energy-efficient designs is attracting those seeking comfort," Valambhia added.



VARANI SAHU | BHAVIN G



HAVER & BOECKER SEAL TECHNOLOGY
CLEAN. SAFE . PROFITABLE.

SEAL TECHNOLOGY : HOW IT WORKS ?

1. The bag is automatically or manually placed on the filling tube.
2. The bag holder fixed the bag, a pneumatic sensor checks whether a bag is correctly placed, and whether it is in the correct position
3. The activation of the inflatable sleeve seals the bag valve during filling, and ensures that no product escapes between the bag valve and the filling tube during the filling process.
4. After filling, the upright bag is pushed from the filling tube into the sealing position. This process ensures that no product escapes from the still open bag valve.
5. The ultrasonic sealing unit automatically moves to the bag valve.
6. The bag valve is closed via ultrasonic sealing by pressing the anvil against the Sonotrode, heating and closing the valve with high frequency of 20,000 Hertz. The sealing time for most common types of sacks is about 0.5 Seconds.
7. After the sealing process, the ultrasonic sealing unit opens, returns to the initial position and releases the bag for discharge. A new cycle can now begin.

For more information get in touch with us at
c.gundigara@haveribauindia.com

HAVER & BOECKER INDIA Pvt. Ltd.

Survey No. 32/4/41 & 42 Khandiwada, Baroda Halol Road,
Post Asoj, Vadodara 391510 Gujarat, India
[L] +91-63573-188-03 · [E] info@haveribauindia.com
[W] www.haveribauindia.com

Bond with the best

Introducing
for the
FIRST TIME



Apollo DryMix Mortar Plant



Apollo dry mortar plant basically consists of a drying systems, loading system, conveying & weighing system, highly accurate weighing system to mix sand, cement and additives in required proportion where it finally gets the exact composition of the required mortar. Once it is prepared, dry mortar is available for bagging & ready to be transported to market. Apollo manufactures 5 TPH, 10 TPH, 15 TPH, 20 TPH, 25 TPH, & 30 TPH capacity plants.

Apollo Infratech Private Limited

Ahmedabad-Mehsana State Highway, Village: Rajpur 382715, Dist: Mehsana, Gujarat.

Cell: +91 90990 71618, 90991 44644

E-mail: info@apolloinfratech.com | www.apolloinfratech.com



Baton Consultants Review : Did you Know ???

National Council for Cement & Building Materials : NCB Incubation Centre

Ncb-ic is an initiative at the national council for cement building materials, Ballabgarh for fostering innovation and entrepreneurial ecosystem in the cement, construction, building materials and other allied sectors in India. NCB-IC is an umbrella provides start to scale support for entrepreneurship and start-ups, facilitates conversion of ground level research into commercial ventures with focus on innovation and product development, where technocrats, researchers, corporates, government agencies and startups would interact and enable creation of advanced technological solutions.

NCB IC Vision

To contribute toward achieving Net Zero Emission, Sustainability, Circular economy in the Cement, Construction, Building Materials and other allied Sector of India by supporting innovative and technology driven knowledge based entrepreneurship or startups and contributing to the national GDP through successful commercial ventures.

NCB IC Mission

Identifying, exploring, and supporting startups, enhancing links between academia, research institutions, corporates for the growth and success of the emerging technology businesses in the cement and construction industry.

NCB-NIC Objectives-

- To foster and promote entrepreneurship culture among students, young professionals and society in India
- To promote the "Make in India", "Vocal for Local" and "Clean India Mission" of Gol
- To create a support system for Innovation-based start-ups in India
- To encourage technology, transfer and commercialization
- To reduce gap between academia and industry in India
- To provide R&D and technical support to micro and small enterprise
- To create an environment conducive to the growth and development of start-ups.

CB IC Focused Area

Startups are welcome to come forward with innovative solutions and ideas having applications in the field of cement, concrete and building materials. Such as ideas may encompass a broad range of sectors such as:

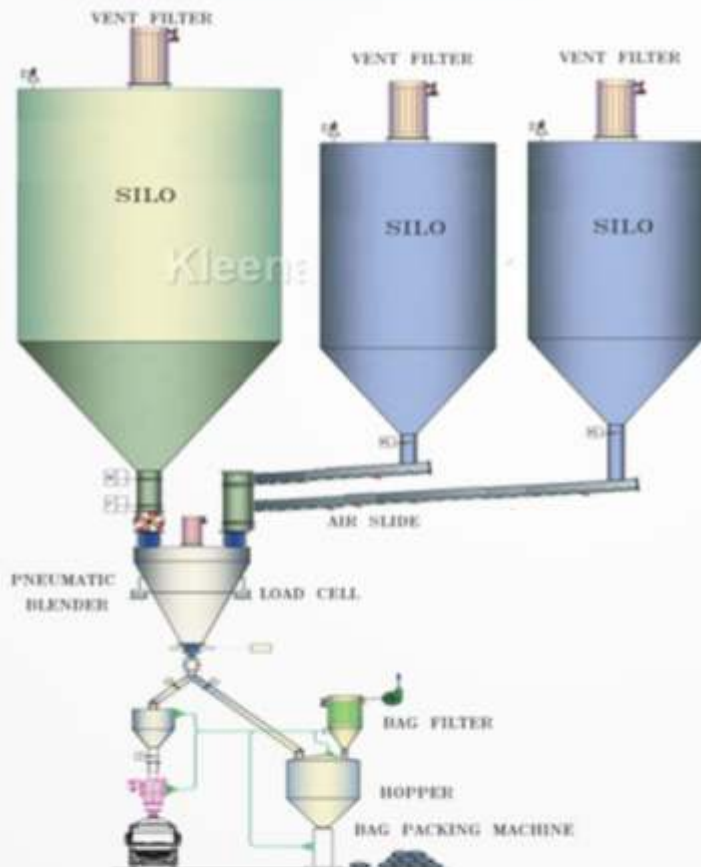
Waste utilization and circular economy, Alternate fuel and materials, Novel and innovative building materials, Construction chemicals, Laboratory instrumentations, Renewable/green energy, Low carbon technologies, Carbon capture and utilisation, Low carbon cements and binders, Logistics and supply chain management, Cement processes and machineries, Construction technology and machineries, Advanced concrete and precast/prefabricated products, 3D printing technology, Low cost housing technology, Manufacturing technologies, etc., Economical business solutions, Education and training, & Information Technology and Artificial Intelligence.

For more information : <https://www.ncbindia.com/ncbicfocus.php>



PNEUMATIC CONVEYING AND BLENDING SYSTEMS (BATCH TYPE)

Excellence in SOLID & POWDER HANDLING SYSTEMS



Kleenair Systems Pune has an excellent pilot plant, having the following features:

- Pneumatic conveying.
- Pneumatic blending (Batch type).
- Twin shaft blender batch type

The beauty of this system is that anybody can bring in their recipes and the testing can be carried out. Accordingly, the system capacity of the Dry Mix mortar/ Putty plant can be arrived upon.

The pneumatic blender is a very unique machine. It consumes very little power and has low maintenance costs. It is suitable for non-cohesive/ non-lumpy powdery materials.

On the other hand, the twin shaft blender is excellent for cohesive/ lumpy powdery materials, as it has an additional lump breaker facility along with it.

This is one of the unique testing facilities available in India, where the customer can bring up their recipes and test the same.



Chemical

Pharmaceutical

Food

Grains & Spices

Plastics

Pigment

Ceramics

Cement & Flyash

Kleenair House , Gat No.120-122, Pirangut, Tal : Mulshi , Dist. Pune : 412 115, Maharashtra, India

Tel : +91 9975496661, +91 9766354649 | Email : sales@kleenairsystems.net | www.kleenairsystems.net

Your partner of choice for Coatings & Construction solutions.

IMCD India is the distributor of the industry's best-in-class suppliers. Contact us!



- Epoxy Resins , Hardners & Diluents



- Acrylic Polyol & SCA
- Castor Oil based Polyol
- Unsaturated Polyester Resin
- Alkyd & Polyester Polyol



- Starch Ethers



- Additives
- Instruments



- Carbon Black



- Cellulose Fibres



- Pigment Dispersion



- Biocides



- Fumed Silica
- Crosslinkers
- Organosilane



- Photoinitiators
- Oligomers & Monomers



- Cyclohexane / Cyclohexanone
- MEK Oxime



- Speciality Fillers & Ciment Fondu



- Vinyl Resins



- Organic Pigments & Anti corrosive Pigments



- TPA Resins



- Synthetic Iron Oxides



- Light Stabilizers & UV Absorber



- MHEC & HEC
- VCVA Co-polymers



- Acrylic Emulsion & XSBR Emulsion



- Silica Matting Agent



- DISPERMAT® dispersers, mixers, stirrers, basket mills and bead mills.



- Dispersible Polymer Powders
- Silicone Emulsions & Water repellent
- Silicone Resins

24th Floor, The Ruby, 29, Senapati Bapat Marg, Dadar West, Mumbai, MH. Pin.: 400 028. India
Mumbai | Ahmedabad | Chennai | Noida | Kolkata | Technical Laboratories: Noida

IMCD India Private Limited
T: +91-22-61460900

HIGHLIGHTS

01

Tech Articles

02

Practical Approach

03

Send us your needs

04

We will research & publish

COMING SOON

**MORE ACTIVITIES IN
DRYCOTEC DRYMORTAR ASSOCIATION**