



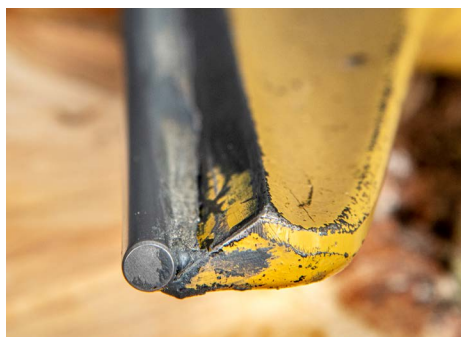
— a chapter of The American Association of Woodturners —

*President's Message...*

# Hello Woodturners

by **Blair Wolfley**  
*SWW President*

Well, spring was short and the late snow brought down a bunch of trees and branches. I know many of you were gathering wood after the weather event. Many of these smaller branches can make very nice smaller bowls and other smaller turnings. Everything doesn't have to be from a 20 inch plus diameter tree.



I know we are all looking for tool improvements. I have a Powermatic lathe with the standard "soft steel" tool rest. Over time it has become dented and bumpy and my tools don't slide along as well as they should. I periodically have used a file to smooth things out but have developed a bit of a sway in the middle of the rest. I recently purchased a 14 inch piece of 3/8 inch M42 tool steel from D-Way Tools and used JB Weld to attach the tool steel to my tool rest. I am very happy with the result. Smooth sailing for my tools along

the smooth, hard, level surface. I will bring the tool rest for show and tell.

Just a quick reminder that we are still needing folks to complete club membership renewal for 2022.

We are very happy with meeting attendance this past month and look forward to even more folks showing up for the meeting on the 28th at Friends of The Carpenter. We are trying to make meetings a mix of novice and advanced demonstrations and we always encourage show and tell for sharing at the meeting.

Keep that wood spinning and I will see you on the 28th.

## Dates to Remember

*Thu, 4/28 at 7p* — club meeting; dipper, dibble and biscuit cutter demo at FOC

*Thu, 5/5 at 10a* — Koffee Klatch (Zoom)

*Sat, 5/7, at 9a-2p* — Women In Turning

*Thu, 5/26, at 7p* — club meeting; boxes demo by Adam Luna at FOC

*Sat, 5/21 at 9a-12p, 12-3p* — two classes, each on making honey dippers, garden dibbles and biscuit cutters; Price is \$45.

*Sat, 5/28, at 9a* — class on making boxes

*Thu, 6/2 at 10a* — Koffee Klatch (Zoom)

*Sat, 6/4, at 9a-2p* — Women In Turning

*Thu, 6/23, at 7p* — club meeting; skew and gouge demo by Rick Rich and Brian Harte at FOC

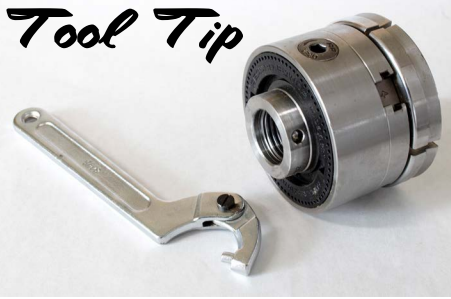
*Sat, 6/25, at 9a* — class on making beads and coves by Rick Rich and Brian Harte

## Club Demo and Classes



This Thursday's club meeting demo will be on three spindle projects — a honey dipper, garden dibble and biscuit cutter. An instead of holding classes on them on Saturday, April 30th, there will be two morning and afternoon 3-hour class sessions for them on Saturday, May 21st.

## Tool Tip



by Doug Pizac

Nowadays, chucks come as one basic model where you use an insert for mounting onto the headstock spindle. The two are mated using a small set screw — a weak link if you have to use a lot of torque to release a stuck chuck.

Instead of putting a steel rod in the chuck's key hole, use a \$15 spanner wrench on the insert itself. You get the torque without damaging the set screw.

## Club Management

Blair Wolfley  
*President*

[southwestwashingtonwoodturners@gmail.com](mailto:southwestwashingtonwoodturners@gmail.com)

Willie Wiffles  
*Vice-President, Programs Dir.*  
[wiffels@msn.com](mailto:wiffels@msn.com)

Brian Harte  
*Treasurer, Store Mgr.*  
[blharte@gmail.com](mailto:blharte@gmail.com)

Connie Wall  
*Secretary*  
[wallchips@outlook.com](mailto:wallchips@outlook.com)

Doug Pizac  
*Brd Mbr, Newsletter, Wood Harvest*  
[wood@pizac.com](mailto:wood@pizac.com)

Bill Brookes  
*Librarian*  
[wmbrookes@att.net](mailto:wmbrookes@att.net)

Rick Rich  
*Class Teacher*  
[rryacolt@gmail.com](mailto:rryacolt@gmail.com)

Donny Reed  
*Website Administrator*  
[donnyreed82@gmail.com](mailto:donnyreed82@gmail.com)

# Women In Turning



## Women in Turning Presents Ena Dubnoff, Melissa Engler, Janine Wang May 7, 2022, 4pm EDT | Zoom | Free | Open to All

by Kathleen Duncan

The women's turning group resumed meeting — finally! There were ten women from the three area chapters. We will be meeting the first Saturday of every month at FOC.

We are going to be following a new format. From 9a-12p, we'll have a scheduled beginner class with required pre-registration and a small fee. And from 12-2p, we'll have an open session for women to bring questions and small projects. Registration won't be required for this.

For more information please contact Kathleen at [woodspinner@gmail.com](mailto:woodspinner@gmail.com)

Also, AAW's WIT committee will have a panel discussion for the next WIT Presents on May 7th 4 pm EST. This will feature Ena Dubnoff, Melissa Engler, and Janine Wang. All three are very talented and it should be an excellent opportunity to inspire your creativity. WIT Presents are free to everyone.

For more information and to register, click [here](#).

## Club Store

Description	Price
Abranet 3x5" sanding sh pk (1 ea.: 80, 100, 120, 180, 240, 320, 400):	\$ 5
CA glue 2 oz. bottle (thin, medium, thick) each:	7
CA accelerator 8 oz. can	9
AnchorSeal-2 end grain sealer, 1-gal jug	15

## Shop and SAVE with your SWW card

Rockler Woodworking and Hardware — Beaverton, OR

Woodcraft — Tigard, OR