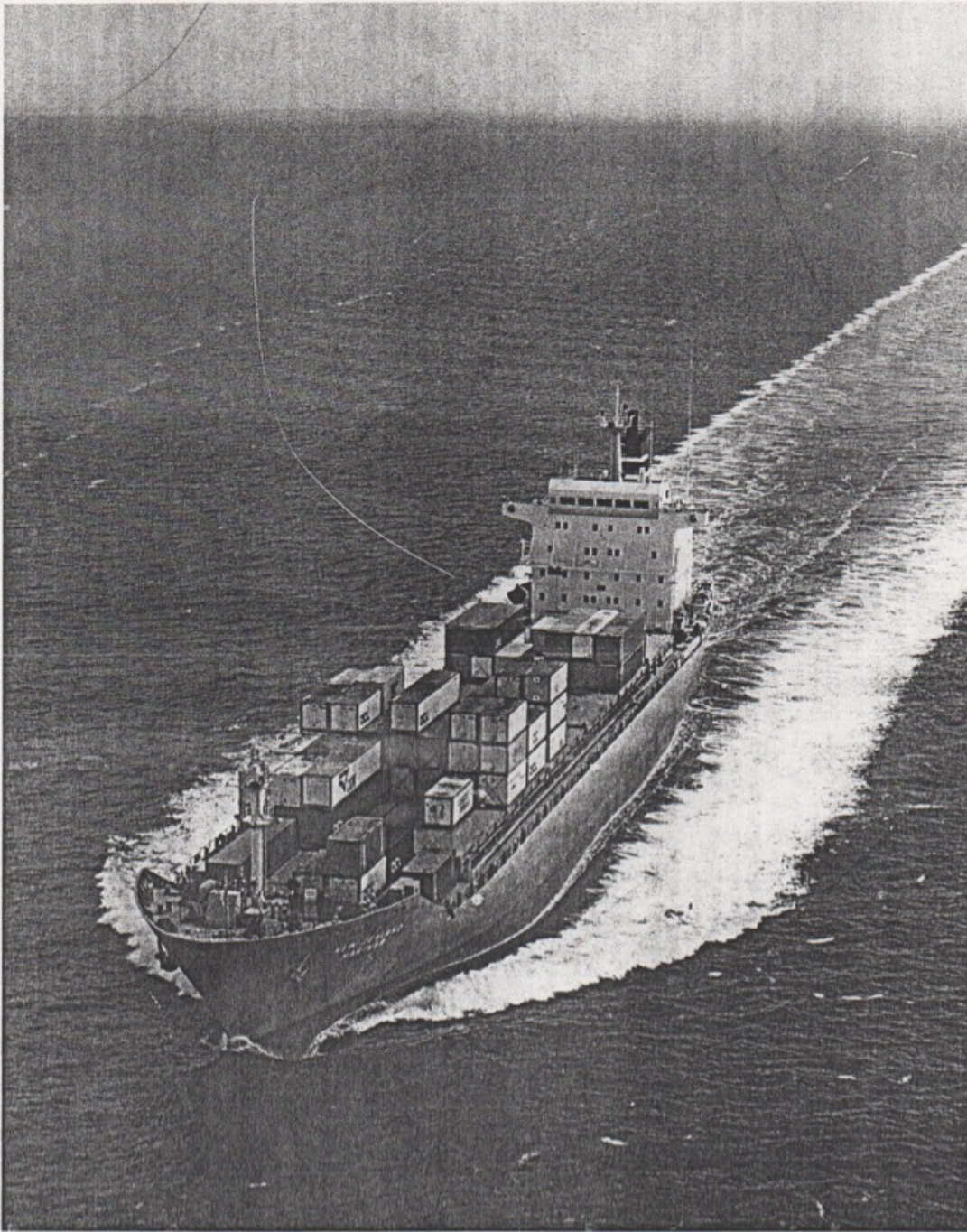
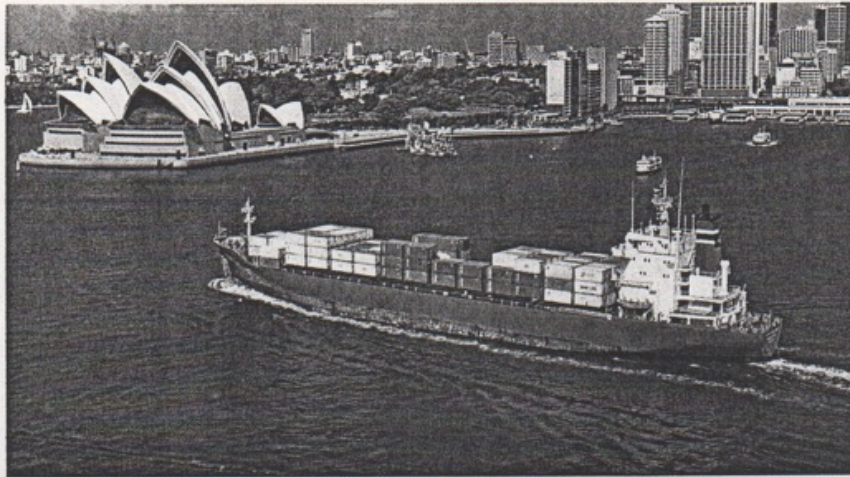


NEW ZEALAND LINE
TRANS TASMAN



**NEW ZEALAND LINE AND ACTA:
TOGETHER IN TRANS TASMAN TRADE**





The Shipping Corporation of New Zealand was set up as the National Line by the New Zealand Government in 1974. In 1985 New Zealand Line was introduced as the trading arm of the Shipping Corporation. As part of the New Zealand Government's privatisation program, the Corporation was offered for sale and was acquired by ACT(NZ) in April, 1989.

New Zealand Line – Trans Tasman commenced operations as an independent operator between Australia and New Zealand on March 1, 1989. Now New Zealand Line has entered into a space-sharing agreement with Tasman Express Line (TEL) which will provide a fully enhanced container service across the Tasman.

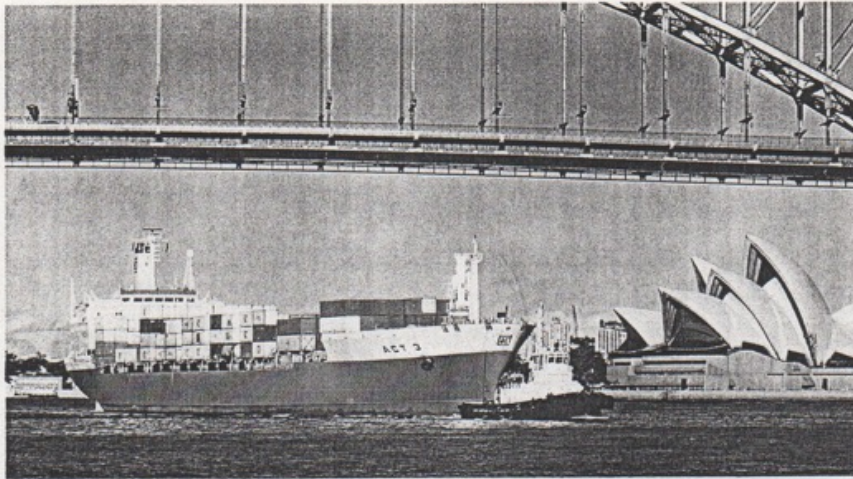
The agreement provides for New Zealand Line to use space on the TEL vessels, "Canterbury Express" and "Auckland Express" and for Tasman Express Line to have space on New Zealand Line's "New Zealand Mariner".

The new service will have considerable benefits for both New Zealand and Australian importers and exporters, as it will offer shippers a wider choice of scheduling and space availability and ensure continued regularity and reliability.

The "New Zealand Mariner" will provide a direct Australia to Auckland service and then serve all other New Zealand main ports. The "Auckland Express" and "Canterbury Express" will continue to work their current schedules. Overall this will ensure fast transit times between key ports, enabling New Zealand Line to provide a superior service to all major Australian and New Zealand markets.

Between the three vessels, New Zealand Line will be able to ship to and from Sydney and Melbourne in Australia and Auckland/Onehunga, Wellington, Lyttelton and Port Chalmers in New Zealand on a regular seven day service.





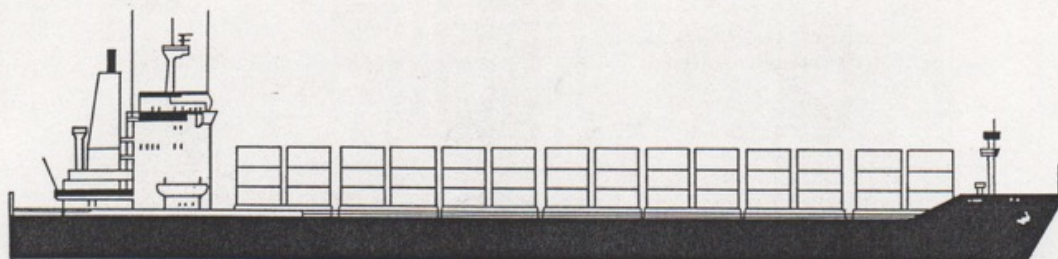
ACTA Pty. Limited is the Australian member of the international Associated Container Transportation (Australia) Group. The group's twelve-strong fleet of container vessels operates from ports throughout Australia on services to the United States, Canada, the United Kingdom and Europe, the South Pacific, and through the recent acquisition of the New Zealand Line, across the Tasman Sea.

The company has major investments in land based facilities throughout Australia, providing shippers with an efficient and complete cargo service. Advanced computer facilities in offices in all states enable rapid and accurate documentation of cargo, with an international network of contacts in the world's busiest ports ensuring continuous container control and care.

ACTA has led the way throughout the twenty year history of containerisation, earning an international reputation as a "problem solver" able to meet the challenge of successfully transporting Australia's exports, especially the growing trade in perishables.

Proud of this reputation, ACTA's innovative policies will ensure that the group will continue to provide both importers and exporters with competitive international containership services characterised by reliability, regularity and efficiency.





NEW ZEALAND MARINER Refrigerated Containership 630 TEU 13880 Dwt

SCNZ

COMPANY: New Zealand Line Tasman Express Line Tasman Express Line

VESSEL: New Zealand Mariner Auckland Express Canterbury Express

TEUS: 630 245 245

REEFER: 70 32 32

AUSTRALIAN PORTS SERVED: Direct Calls – Melbourne, Sydney,
Cargo also accepted – Brisbane, Adelaide,
Fremantle, Tasmania

NEW ZEALAND PORTS SERVED: Direct Calls – Auckland/Onehunga, Wellington,
Lyttelton, Port Chalmers

ACTA OFFICES:

7th Floor,
ACTA House,
447 Kent Street,
SYDNEY, NSW 2000
Tel: (02) 266 0633
(02) 286 9666
after 31 July

9th Floor, Building A
World Trade Centre,
MELBOURNE, VIC 3000
Tel: (03) 611 2000

380 Queen Street,
BRISBANE, QLD 4000
Tel: (07) 221 3116

12 Todd Street,
PORT ADELAIDE, SA 5000
Tel: (08) 47 4300

3 Pakenham Street,
FREMANTLE, WA 6160
Tel: (09) 335 4866

Associated Shipping
Agency Pty. Ltd.,
53 Salamanca Place,
HOBART, TAS 7000
Tel: (002) 34 4833

Associated Shipping
Agency Pty. Ltd.,
17-23 Archer Street,
SOUTH TOWNSVILLE, QLD 4810
Tel: (077) 71 6188



NEW ZEALAND LINE

ACT A

UK - EUROPE
MEDITERRANEAN
AND
JEDDAH

PACE
EAST COAST

SCNZ

TRANS -
TASMAN

JAPAN /
KOREA

BLUE STAR

WEST COAST
NORTH AMERICA
PACIFIC
ISLANDS

MIDDLE
EAST

TRANS TASMAN SERVICE

COMPANY

SCNZ

TASMAN EXPRESS LINE

TASMAN EXPRESS LINE

VESSEL

NEW ZEALAND
MARINER.

AUCKLAND EXPRESS

CANTERBURY EXPRESS

TEUS

630

245

245

REEFER

70

32

32

AUSTRALIAN PORTS SERVED:

DIRECT CALLS MELBOURNE, SYDNEY.
CARGO ALSO ACCEPTED BRIS, ABEL, FREM, TAS,

NEW ZEALAND PORTS SERVED:

DIRECT CALLS AUCKLAND/DUNEHUNGA, WELLINGTON,
LYTTELTON, PORT CHALMERS.