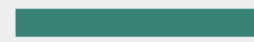




# MetaFit Restore

FITNESS BIOSTACKING POD



The **MetaFitRestore Pod** is a personalized Dry heat | Infrared Sauna | Chromo-LED |  
Vibration massage system designed for **whole body wellness**



**HYPERTHERMIC**  
Accelerated Recovery  
**TECHNOLOGY**

**Touchless Wellness Technology**

No Attendant Required

## FEATURES/MODALITIES



- ✓ **8" LCD Panel** Touch Screen w/  
**10 preset programs** (+ 1 Custom)  
& **6 eScapes** Selections

- ✓ Automatic **4 Aromatherapy**  
**Diffuser** System



- ✓ **Heated** (Carbon Infrared) Contoured  
**Vibration massage bed**



- ✓ **FitBed** Exercise System

*plus*

- **Oxygen** "ready"
- Privacy **Visor**
- Raised Designer **Pedestal**



- ✓ **Dual Heat Vortex:** Dry **Heat**  
**Convection** + **Far Infrared**

- ✓ **10 Chromolight** clusters inside the  
chamber (**Red, Yellow, Green, Blue**)

- ✓ **Himalayan Salt Tile** w/  
1 Chromolight cluster



- ✓ Cooling **Face Fan**



# FUNCTIONS & MODALITIES



## Hyperthermic Wellness Pods



<b>Total Wellness Technologies</b>	15	<b>18</b>
<b>Touch LCD Color Display</b>	4" IDEC Screen	<b>8" IDEC Screen</b>
<b>Dynamic Dry Heat</b>	Yes	<b>Yes</b>
<b>Infrared (FIR + NIR) Radiant Heat</b>	Yes	<b>Yes</b>
<b>Gemstone IR System</b>	Optional	<b>Yes</b>
<b>Ergonomic Cushioned Vibration Massage Bed (2 motors)</b>	Yes (No Heat)	<b>Yes (Heated)</b>
<b>Cooling Facial Air</b>	Yes	<b>Yes</b>
<b>Heated Bed</b>	-	<b>Yes</b>
<b>Whole Body Chromolight (Red, Yellow, Green, Blue + Near Infrared) Modules</b>	14 (R - Above)	<b>10 (RYGB - Above)</b>
<b>Exterior LED Lights</b>	1 (R: Salt System)	<b>1 (R: Salt System)</b>
<b>Facial LED Lights</b>	-	<b>2 (RYGB)</b>
<b>Purifying Himalayan Salt Tiles w/ LED</b>	Yes	<b>Yes</b>
<b>External Aroma System</b>	Yes (1)	-
<b>Automatic Aroma Diffusion System</b>	-	<b>Yes (4)</b>

## Hyperthermic Wellness Pods



<b>Oxygen-Ready Enriched Air Ports</b>	Yes	<b>Yes</b>
<b>Oxy Oasis O2 Condenser</b>	Optional	<b>Optional</b>
<b>FitBed – 2 Resistance Bands</b>	Yes	<b>Yes</b>
<b>eScapes Guided Reality Programs</b>	4	<b>6</b>
<b>Calorie Indicator</b>	Yes	<b>Yes</b>
<b>EZ Clean Massage Marine Vinyl Bed Cover</b>	Optional	<b>Optional</b>
<b>Germicidal Lamp</b>	-	<b>Yes</b>
<b>Privacy Visor</b>	Optional	<b>Yes</b>
<b>Solid Fiberglass Shell Body</b>	Yes	<b>Yes</b>
<b>Pedestal</b>	Optional	<b>Yes</b>
<b>110V Power Supply</b>	Yes	-
<b>220V Power Supply</b>	-	<b>Yes</b>

# Thermal Energy Power Calculations

This report explains the scientific basis and wellness technologies for **bio-stacking of natural multi-energies** in personal PODs

---

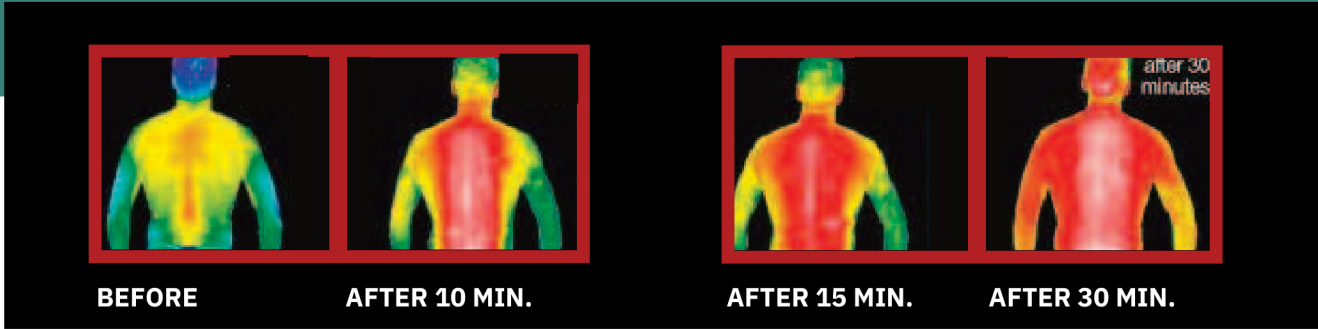
## TOTAL MULTI-ENERGY POWER (Joules)

- Power of Multi-Energy Personal Pod Systems
- Energy Calculations of Chromolight LED & Radiant
- Infrared Energy Calculations of Dry Heated Air





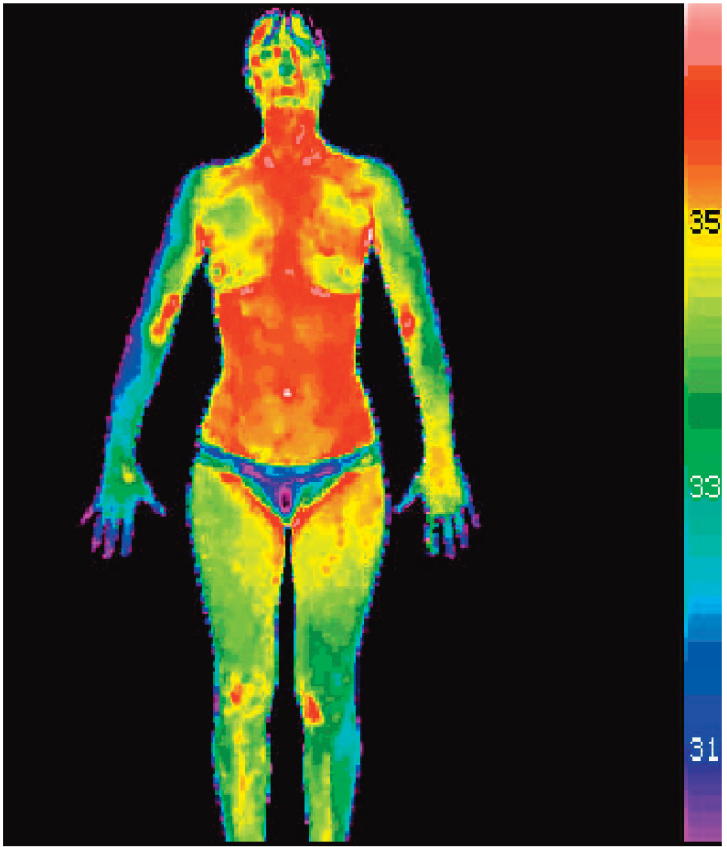
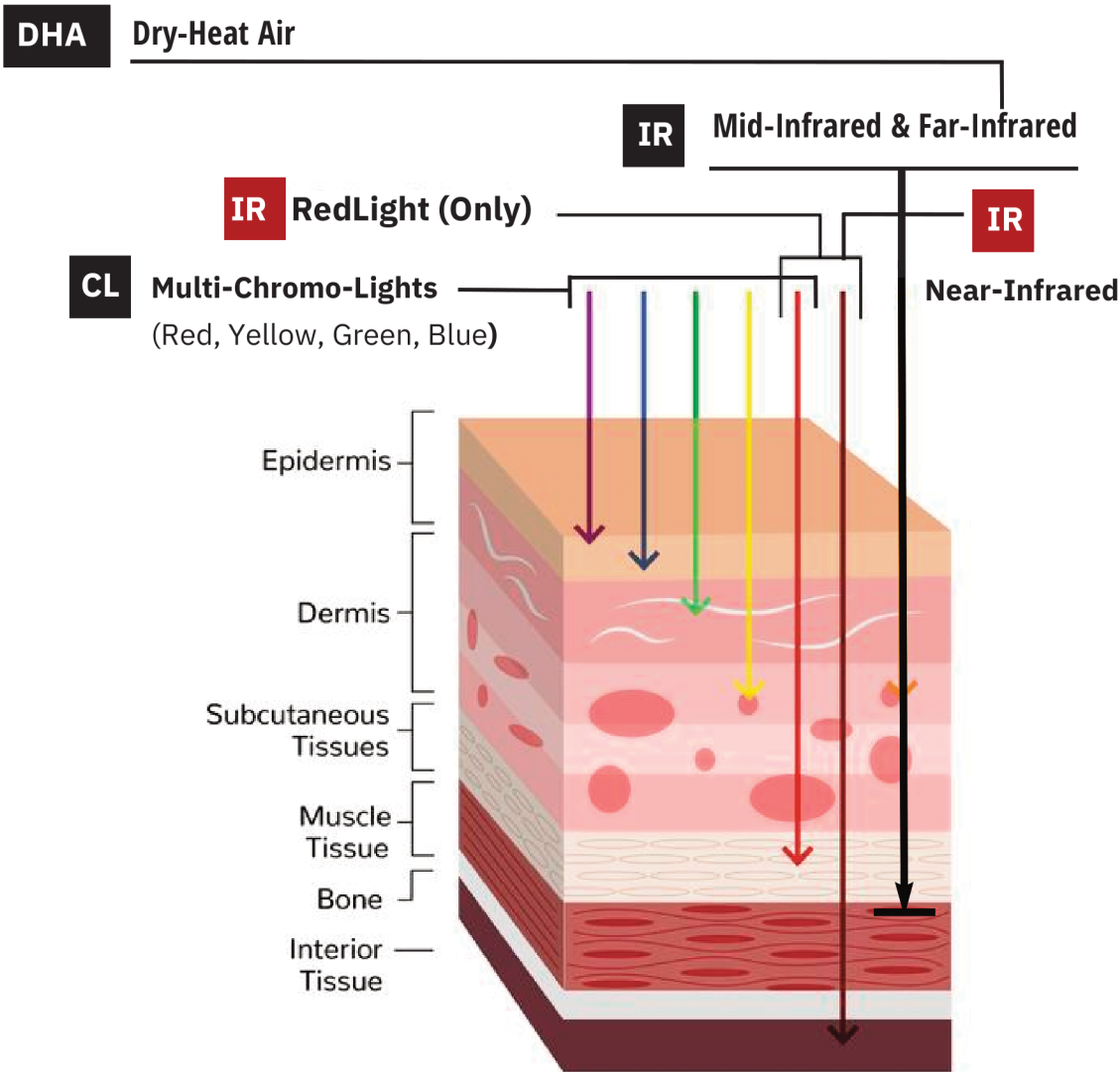
# THE COMBINED “TRIPLE-POWER” OF NATURAL ENERGIES CHROMO-LIGHT (CL) and INFRARED (IR) (“CLIR”) AND CONVECTION DRY-HEAT AIR (“DHA”):



**CLIR: Chromo-light (CL) + Radiant Infrared (IR) = (“CLIR”)** are combined in multi-energy Pods. The Sun’s CLIR wavelengths provide multi-energies to enhance our health, fitness and wellness.

**DHA:** Dry-heated air up to (192F/88 C) is circulated by convection throughout the multi-energy pods in a evenly measured **vortex of heat** that further combines with both the Chromo-Light and Radiant Infrared to comfortably surround and maximize output of natural energy to the user.

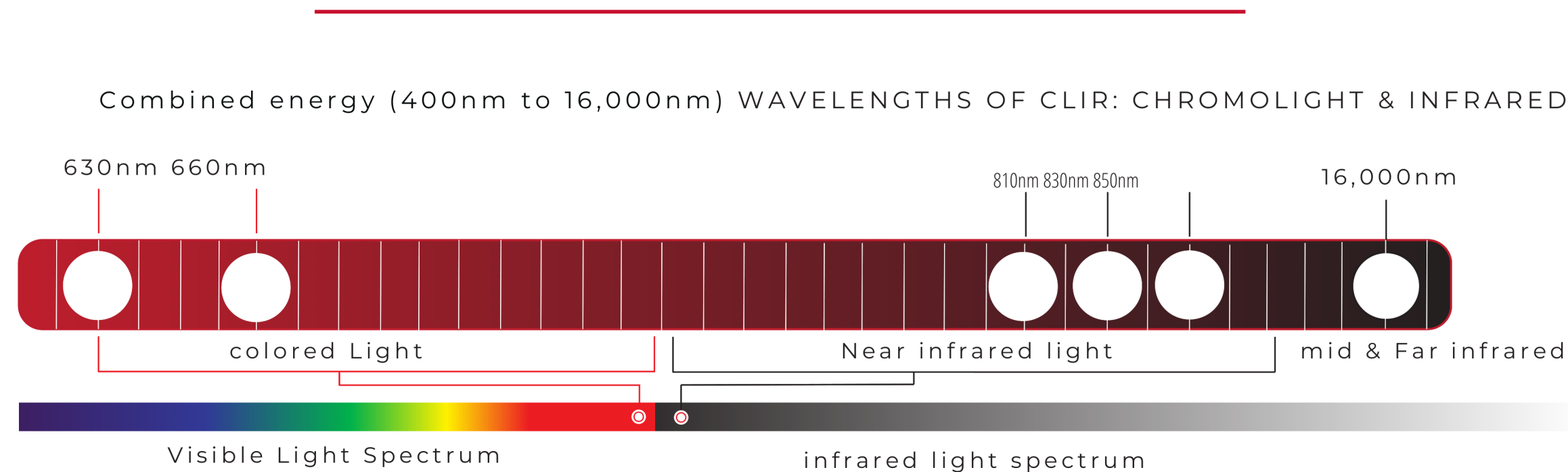
CHROMOLIGHT ABSORPTION GRAPH:



# POWER of MULTI-ENERGY

## CLIR (CHROMOLIGHT + INFRARED) + DRY-HEAT AIR

The multi-energy PODs combine **3 to 4 energy sources of chromolight LED, radiant infrared wavelengths, gemstone IR heaters, and dry heated air** to provide multi-energy transfer for greater increase and longer-lasting whole body wellness & fitness improvement results.



**MULTI-ENERGY BIO-STACKING = ULTIMATE BIO-HACKING** P | 5



# Thermal Energy Calculations: Joules (J/cm<sup>2</sup>) and Calories Burned



<b>NATURAL WELLNESS TECHNOLOGIES</b>	<b>18 Technologies:</b> LED + IR + Dry Heat + Vibration	<b>15 Technologies:</b> LED + IR + Dry Heat + Vibration
<b>TOTAL ENERGY JOULES (J/cm<sup>2</sup>)</b> <i>per 30 minute session<sup>2</sup></i>	<b>464.71 J/cm<sup>2</sup></b>	<b>333.90 J/cm<sup>2</sup></b>
<b>Product Dimensions</b>	<i>Closed:</i> 35"W x 39"H x 89"L	<i>Closed:</i> 35"W x 39"H x 89"L
<b>Body Coverage</b>	Above	Above
<b>Interior Surface Area</b>	8,903.20 cm <sup>2</sup>	8,903.20 cm <sup>2</sup>
<b>Electrical Power</b>	220 V / 15 Amp	110 V / 20 Amp (dedicated)

<b>CHROMO-LED + INFRARED (CLIR) POWER</b>		
<b>Chromo-LED Coverage Area / LED Modules</b>	Body & Face LED Lights / 9 Modules	Body Lights / 7 Modules
<b>Qty of Chromo-LEDs</b> (10mA Intense LEDs)	540 Chromo-LEDs	360 Chromo-LEDs
<b>Chromo-LED Power (W)</b>	5.40 W	4.42 W



<b>INFRARED (IR) POWER</b>		
<b>Infrared Wavelength</b>	Far, Mid and Near Infrared	Far, Mid and Near Infrared
<b>Infrared Power (W)</b>	300 W	300 W
<b>Infrared HEATED Bed (W)<sup>1</sup></b>	230 W / 39.61 J/CM <sup>2</sup>	Not Available
<b>CHROMO-LED + INFRARED (CLIR) POWER</b>		
<b>Total CLIR Dosage (30 min)</b>	100.80 J/cm <sup>2</sup>	60.97 J/cm <sup>2</sup>

1) Bed surface area below the body 4,180.63 cm<sup>2</sup> delivering 39.61 J/cm<sup>2</sup>



<b>DRY HEAT AIR (DHA) POWER</b>		
<b>Dry Heat Air Power (W)</b>	2,335.40 W	1,654.42 W
<b>Total DHA J/cm<sup>2</sup> Dosage (30 min)</b>	363.91 J/cm <sup>2</sup>	272.93 J/cm <sup>2</sup>
<b>COMBINED: CLIR + DRY HEAT</b>		
<b>Combined CLIR + Dry Heat Energy J/cm<sup>2</sup> Dosage (30 min)</b>	464.71 J/cm <sup>2</sup>	333.90 J/cm <sup>2</sup>

## CALORIES BURNED:



<b>Passive Hyperthermic (PH) Calories Burned (30 min)<sup>2</sup></b>	750 to 2,400 KCAL	750 to 2,400 KCAL
<b>Active Hyperthermic Exercise (AHE) Calories Burned (30 min)<sup>3</sup></b>	1,500 to 9,600 KCAL	1,500 to 9,600 KCAL

2) Passive Hyperthermic (PH) Calorie Burn is an estimate and depends on body size. A typical Passive Hyperthermic KCAL Burn in one session is 250 - 800 KCAL. The total Passive Hyperthermic session burn includes a 24 hour after burn period with continued KCAL increase of 2x to fuel the amplified metabolic output. PH Example formula: total KCAL session burn (including after burn): 250 KCAL to 800 KCAL Session Burn + 2x After Burn = 750 to 2,400 Total KCAL Burn in one session.

3) Active Hyperthermic Exercise (AHE) sessions increase calorie burn by an additional 1x to 3x depending on the EXERCISE exertion level. AHE Example formula: KCAL session burn + 750 (1x) to 7,200 (3x) (AHE Burn) = a range of 1,500 to 9,600 total KCAL burned in one Active Hyperthermic Exercise session.