



new



POLYLOK™ Inc.



Available Options:

- Optional 90° corner
- Optional end cap
- Optional end outlet

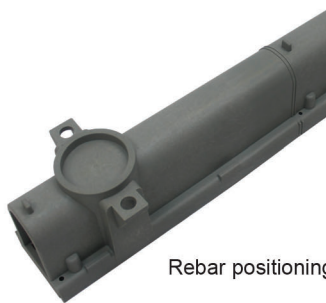
Grate Features:

- ADA compliant
- Reversible (flat or 1/8" convex)

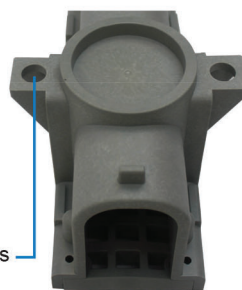
THE **NEW** POLYLOK 4' SKINNY TRENCH DRAIN OFFERS MANY OF THE SAME FEATURES THAT THE POLYLOK 4' HEAVY DUTY TRENCH DRAIN DOES, BUT IN A SLIM, COMPACT DESIGN!



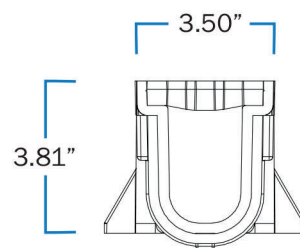
Polylok's heavy duty 4" trench drain & skinny 4" trench drain comparison



Rebar positioning holes



Each channel has four outlet ports that accept 2" SCH 40 pipe



4' skinny trench drain dimensions

24" DRAIN WELL KIT

The Polylok drain well is an easy to install dry well used to collect, retain, and discharge storm water. Our drain well allows the flexibility to choose your inlet and leaching locations. The drain well cover allows for a 4" surface drain and is equipped with two recessed handles for easy removal. One of our drain well's greatest features is its ability to allow stacking of Polylok 24" risers to accommodate higher volumes of water.

Features:

- Inlet and leaching location flexibility
- Lid will accept a 4" surface drain
- Lid is equipped with two recessed handles
- Accepts any Polylok 24" riser
- Built in anti-flotation ring
- Holds 56 gallons
- Customizable accessories available



Drain well shown with an additional 12" tall riser



new

POLYLOK™ Inc.

BEST TECHNOLOGY



NPCHA
MEMBER

NO WRA
MEMBER



12" Round Catch Basins
4 Hole**20" Round Catch Basins**
6, 7, or 8 Hole**24" Rhino Catch Basins**
10 Hole**ROUND CATCH BASINS**

Polylok round catch basins are available in 12", 20" & 24" diameters and are an essential component in any landscape drainage system. Use our catch basins near areas of standing water to help facilitate proper water drainage and avoid property damage. The Polylok round catch basin system allows the use of our risers to bring the grate or cover to grade as needed. Our boxes allow you to choose what height you want your inlets and outlets to be and accept 2", 3", 4", and 6" pipe with some models.

12" Round Catch Basin Features:

- Use as a rain drain for gutters, driveways, and sub-surface drainage.
- Use with 12" Polylok risers to bring the grate or cover to grade as needed.
- Use our watertight seals with nuts for 2", 3", and 4" SCH40 or SDR35 pipe, and 4" corrugated pipe.
- Four stabilizing feet with every box.
- Plastic or galvanized steel grates available to suit your application.
- Solid or heavy duty covers available for specific design requirements.

Kit Includes:

- Box (4 hole)
- Plastic grate
- Two 4" seals with nuts
- Four stabilizing feet
- Four stainless steel screws

20" Round Catch Basin Features:

- Can be used as a valve or meter box.
- Use with 20" Polylok risers to bring the grate or cover to grade as needed.
- Use our watertight seals with nuts for 2", 3", and 4" SCH40 or SDR35 pipe, and 4" corrugated pipe.
- 6-hole and 7-hole boxes accept 6" pipe.
- Plastic or galvanized steel grates available to suit your application.
- Solid or heavy duty covers available for specific design requirements.

Kit Includes:

- Box (6 hole, 7 hole, or 8 hole)
- Plastic grate
- Four 4" seals with nuts
- Six stainless steel screws

24" Rhino Catch Basin Features:

- Can be used as a valve or meter box.
- Use with 24" Polylok risers to bring the grate or cover to grade as needed.
- Use our watertight seals with nuts for 2", 3", and 4" SCH40 or SDR35 pipe, and 4" corrugated pipe.
- Use our 6" grommets for 6" SCH40 or SDR35 pipe.
- Solid or heavy duty covers available for specific design requirements.

Kit Includes:

- Box (10 hole)
- Plastic heavy-duty grate
- Four 4" seals with nuts
- Eight stainless steel screws



* Make the perfect hole size when using the provided 4" Polylok seals by using our Rhino Horn 5-1/8" hole saw.



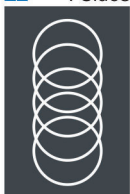
Galvanized metal grates available for the 12" & 20" catch basin.



Optional risers shown on the 12", 20" & 24" catch basin.



Photos from a typical 12" round catch basin installation.

12" 4 Sides

4 Hole Configuration
PN: 3017-20CG6

20" 2 Sides

6 Hole Configuration
PN: 3017-20CG6

20" 2 Sides

7 Hole Configuration
PN: 3017-207G

20" 1 Side

8 Hole Configuration
PN: 3017-20CG

20" 3 Sides

10 Hole Configuration
PN: 3008-24G

20" 4 Sides**24"** 10 Sides

24" Round Catch Basins**9"x9" Square Catch Basins****12"x12" Square Catch Basins****ROUND CATCH BASINS****Product Features:**

- Made of high density, non-corrosive polyethylene plastic (HDPE) with the highest UV protection available
- Comes standard with a 24" heavy duty grate
- Includes four 4" SCH40 grommets
- Grommets can be placed anywhere on the basin or riser stack
- Custom heights available
- Accepts all 24" Polylok risers

Kit Includes:

- 24" basin (approx: 25 gallon capacity)
- 24" heavy duty grate
- Four 4" SCH40 grommets
- Eight stainless steel screws



Basin shown stacked with 24"x12" risers.

SQUARE CATCH BASINS

Polylok Catch Basins are used to collect and discharge excess water in order to prevent potential damage to landscapes and property. We offer our catch basins in two sizes: 9"x9" and 12"x12", with many grate options and accessories available. Our catch basins are precut with two inlet/outlet side openings. Additionally, our catch basins come with two sets of seals that accept 2", 3" and 4" SCH40 or SDR35 pipe, and 4" corrugated pipe. With the use of our optional 6" Polylok Seal with nut, the 12"x12" model now accepts 6" pipe.

Kit Includes:

- Box
- Grate (black or green)
- Two 4" seals with nuts
- Four stainless steel screws



6" & 4" Polylok seal with nut



9"x9" catch basin shown with optional cast iron grate.

Optional Accessories:

- Cast iron grates
- 6" seals with nuts for 12"x12" catch basin
- Atrium grates (black or green)
- Square 6" tall risers for 12"x12" catch basin
- Solid cover for 12"x12" catch basin
- 6" tall riser for 12"x12" catch basin



12"x12" catch basin shown with optional solid cover.



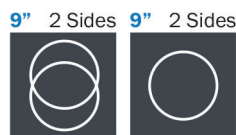
12"x12" catch basin shown with optional plastic atrium grate.



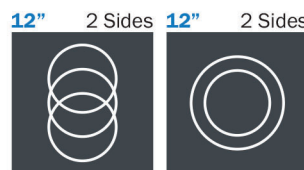
Optional 6" tall risers shown for 12"x12" catch basin.



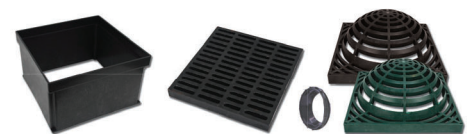
Customize your 24" round catch basin with additional risers and grommets.



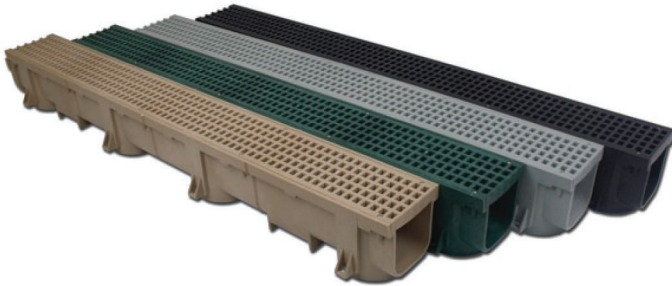
9" x 9"
PN: PDB-9KIT
PN: PDB-9KITG



12" x 12"
PN: PDB-12KIT
PN: PDB-12KITG



Available options for the 12"x12" catch basin include cast iron & atrium grates, 6" tall risers, covers, and 6" seals.



HEAVY DUTY TRENCH DRAINS

Our trench/channel drain system is engineered to deliver the most flexibility in a heavy duty design. The Polylok Heavy Duty Trench/Channel Drain is H-20 wheel load rated when cast in reinforced concrete. It offers a modular design with interlocking components to enable quick and easy connections. Each segment is 4' in length and comes with a reversible ADA compliant grate that can either be flat or allow for a 3/16" convex surface.

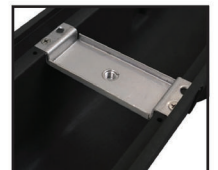
Our trench/channel drain design isn't just a great design, it's engineered with a smooth installation in mind. Each 4' segment can be joined together or cut down to 12" increments. Each trench/channel drain segment has eight (8) anchor positions to allow rebar to be installed to prevent floating. There are two sections on each 4' trench to allow 2x4s to be installed to aid in leveling and anchoring prior to pouring concrete. There are four drainage ports on each 4' section to enable 3" and 4" SCH40 or 4" SDR35 connections. Each segment is shipped with #8 x 1 1/4 screws to fasten the grates to the channel and to secure the interlocking pieces, so there is no need to visit the hardware store.

DUCTILE GRATE TRENCH DRAINS

Polylok drains offer homeowners, architects, engineers, contractors and storm water managers a variety of superior surface drains for a myriad of applications. No matter what the situation requires, from residential to unlimited heavy industrial applications, our quality is unmatched. Polylok drains are engineered for simple, one-step installations, minimizing contractor costs for installation. Polylok drains meet or exceed the Americans with Disabilities Act of 1990; Section 4.5.4. Polylok drains are a practical and cost-effective solution where runoff needs to be controlled or captured.

Features:

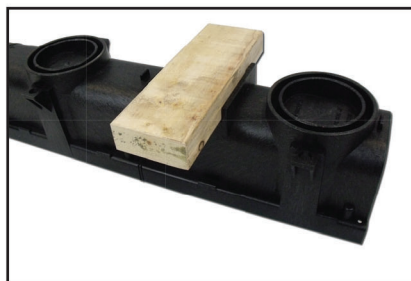
- Comes with all stainless steel hardware
- Easily installed and removed with one bolt
- 47 sq. in. of open area
- Rust resistant
- Load Class C
- Application: Heavy Duty/Commercial
- Application proof load: 310 psi
- Typical application standard: A-A6005



Ductile grate mounting hardware



Each channel has four (4) drainage ports that will accept 3" or 4" SCH40, or 4" SDR35 pipe.



2x4s can be fastened to provide a wider footing.



Outside holes accept #4 rebar for fast positioning.



4' Trench Drain & Grate

PN: PL-90860 (Black)
PN: PL-90860-G (Grey)
PN: PL-90860-GR (Green)
PN: PL-90860-TN (Tan)
PN: PL-90860-CI (Ductile)



Tee Drain & Grate

PN: PL-90860-T (Black)
PN: PL-90860-TG (Grey)
PN: PL-90860-TGR (Green)
PN: PL-90860-TAN (Tan)
PN: PL-90860-T-DIG (Ductile)



90° Drain & Grate

PN: PL-90860-90 (Black)
PN: PL-90860-90G (Grey)
PN: PL-90860-90GR (Green)
PN: PL-90860-90T (Tan)
PN: PL-90860-90-DIG (Ductile)



Open End Outlet

PN: PL-90860-OE (Black)
PN: PL-90860-OEG (Grey)
PN: PL-90860-OEGR (Green)
PN: PL-90860-OET (Tan)



Closed End Cap

PN: PL-90860-CE (Black)
PN: PL-90860-CEG (Grey)
PN: PL-90860-CEGR (Green)
PN: PL-90860-CET (Tan)



3" Pipe Grate
PDB-3G-BK
PDB-3G-GN



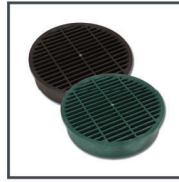
4" Pipe Grate
PDB-4G-BK
PDB-4G-GN



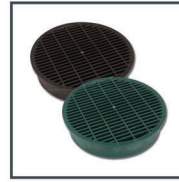
4" Atrium Grate
PAG-4-BK
PAG-4-GN



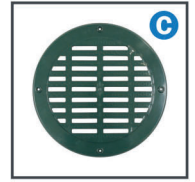
6" Pipe Grate
PDB-6G-BK
PDB-6G-GN



8" Pipe Grate
PDB-8G-BK
PDB-8G-GN



10" Pipe Grate
PDB-10G-BK
PDB-10G-GN



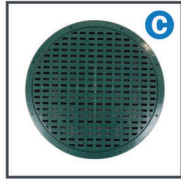
12" Pipe Grate
3004-GR



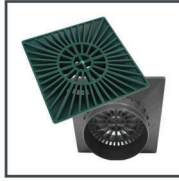
15" Pipe Grate
300415-GR



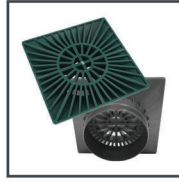
18" Pipe Grate
3007-HDG



24" Pipe Grate
3008-G24



6" Square Grate
PDB-6SPG-BK
PDB-6SPG-GN



9" Square Grate
PDB-9SPG-BK
PDB-9SPG-GN



Flow Gate
PDB-4PE



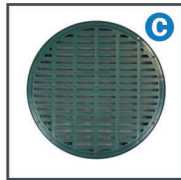
Flow Gate with Elbow
PDB-4PE-KIT



12" D-Box Grate
3017-GE



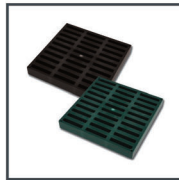
12" Galvanized Steel Grate
3017-ME



20" D-Box Grate
3017-G20



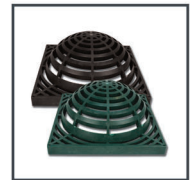
20" Galvanized Steel Grate
3017-ME20



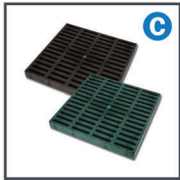
9" x 9" Catch Basin Grate
PDB-9G-BK
PDB-9G-GN



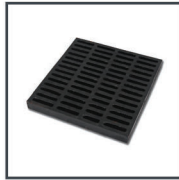
9" x 9" Cast Iron Grate
PDB-9GM



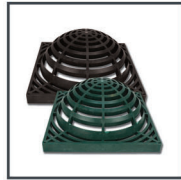
9" x 9" Atrium Grate
PDB-9AG-BK
PDB-9AG-GN



12" x 12" Catch Basin Grate
PDB-12G-BK
PDB-12G-GN



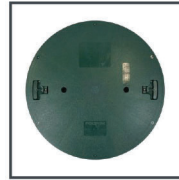
12" x 12" Cast Iron Grate
PDB-12GM



12" x 12" Atrium Grate
PDB-12AG-BK
PDB-12AG-GN



30" Pipe Cover
3010-C30



20" & 24" Riser Cover
3009-RC (20")
3008-RC (24")



12" x 12" Catch Basin Riser
PDB-12R



12" x 6" Riser
3017-R



20" x 2" Riser
3009-GR2



20" x 3" Riser
3009-LPRP



20" x 6" Riser
3009



20" x 12" Riser
3009-R12



24" x 2" Riser
3008-GR2



24" x 3" Riser
3008-RP



24" x 6" Riser
3008



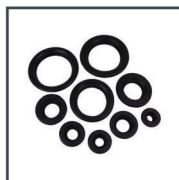
24" x 12" Riser
3008-R12



4" Seal & Nut
3001-SN



6" Seal & Nut
3001-6



1/2" - 6" Grommets



4" Corrugated to 3" SDR35 Pipe Adapter
PL-90860-A43



4" Corrugated to 4" SDR35 Pipe Adapter
PL-90860-V44



4" Corrugated to 4" SDR35 or SCH40 Adapter
PL-IT44CC

C Solid cover available