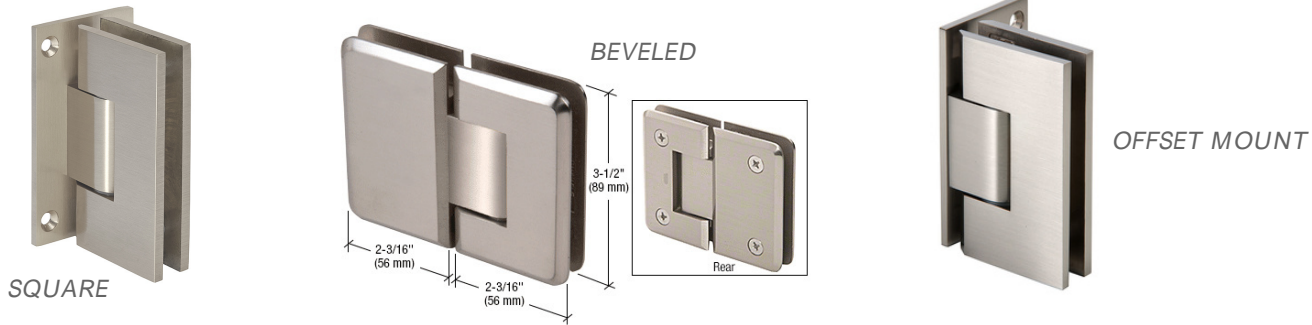


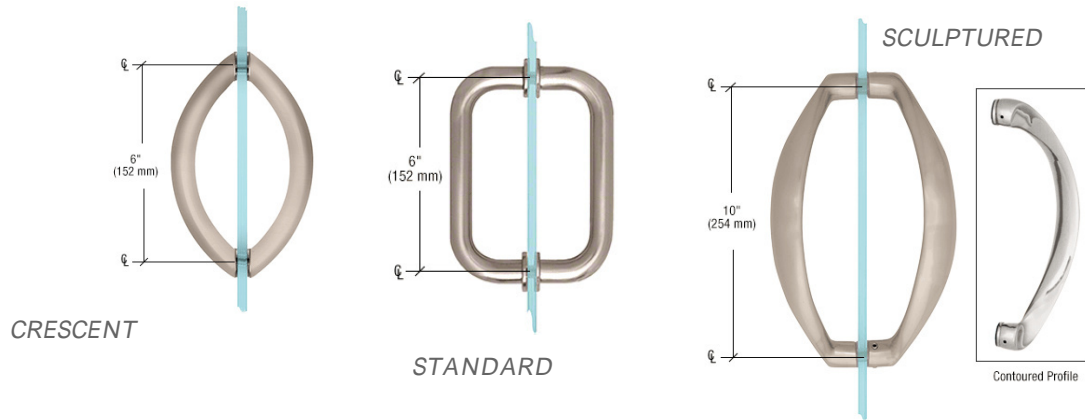
SHOWER DOOR DESIGN OPTIONS
 PRICING INCLUDES STANDARD HANDLE ONLY UNLESS NOTED OTHERWISE



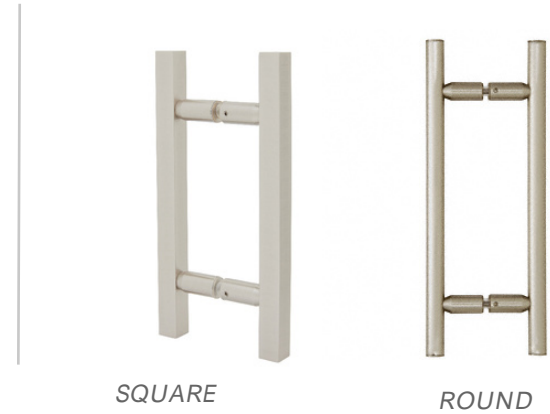
Hinge Design Options



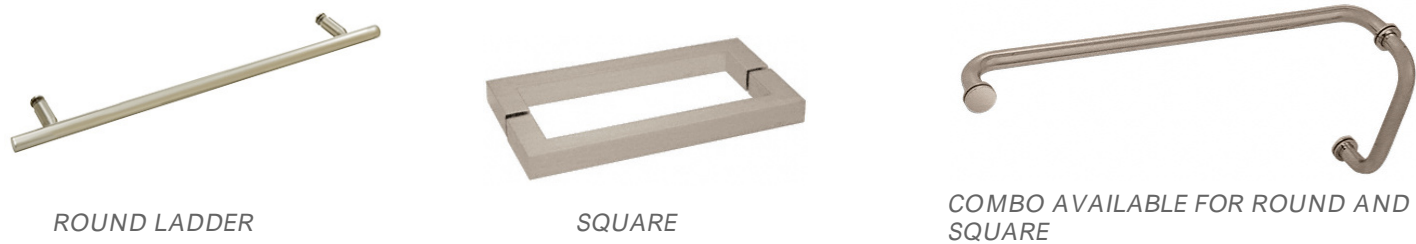
Pulls



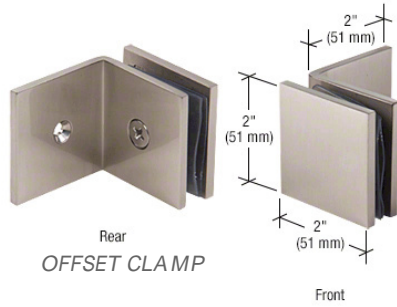
Ladder Pulls



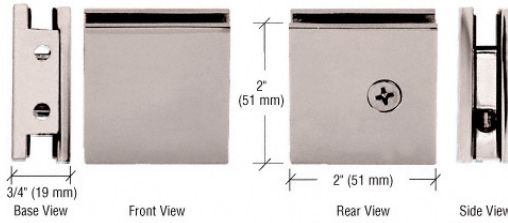
Towel Bars



SHOWERDOOR SIDELITE ATTACHMENTS



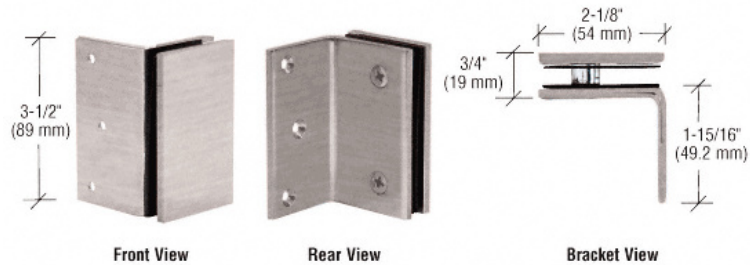
OFFSET CLAMP



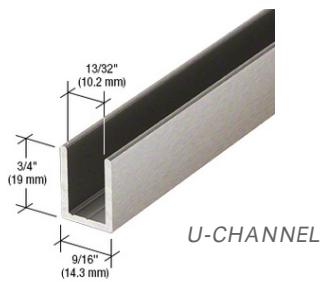
SQUARE CLAMP



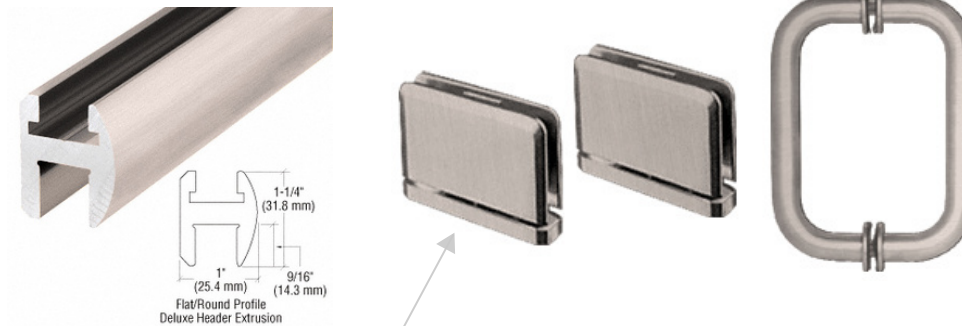
BEVELED CLAMP



FULL WALL BRACKET



U-CHANNEL



STANDARD HEADER
HEADER UTILIZES TOP & BOTTOM HINGES

SHOWER HARDWARE FINISH REFERENCE GUIDE

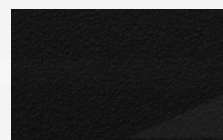
Cool Metals



Polished Chrome



Brushed Satin Chrome

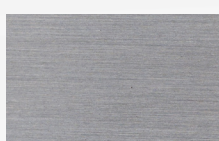


Matte Black

Neutral Metals

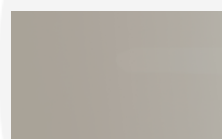


Polished Stainless Steel



Brushed Stainless Steel

Warm White Metals



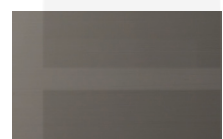
Polished Nickel



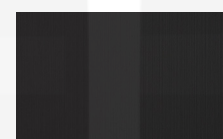
Brushed Nickel



Gunmetal



Antique Brushed Nickel

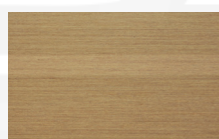


Oil Rubbed Bronze

Warm Yellow Metals



Polished Brass



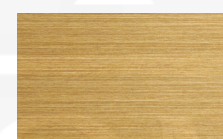
Satin Brass



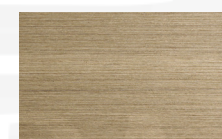
Ultra Brass



Gold Plated



Antique Brass



Brushed Bronze

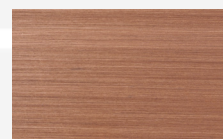
Pink Toned Metals



Polished Copper



Antique Bronze



Antique Brushed Copper

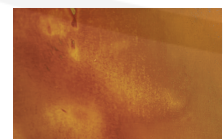
Living Finishes



Unlacquered Brass
At Installation



Unlacquered Brass
After 1 Year



Unlacquered Brass
5+ Years

Standard finishes include polished chrome, matte black, and brushed nickel.

Other finishes are available based on product availability. Please note that not all finishes are available for every shower design.