

**Leading When There is No Roadmap:
Reinvigorating Your Mission
in Uncertain Times**

Judy Lubin
Stratosphere Leadership Coaching

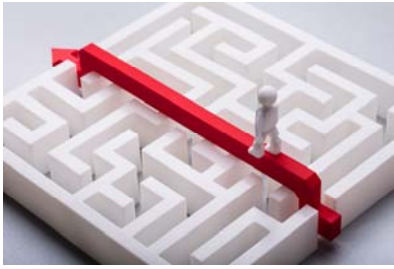


STRATOSPHERE
Leadership Coaching
Empowering Leaders to Lead in Uncertain Times



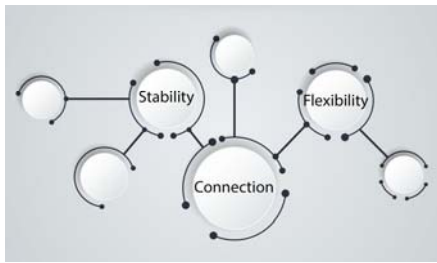
Familiar feeling?

How has the current uncertainty been affecting you and your organization?



Stratosphere Leadership Coaching specializes in empowering leaders to navigate change in complex and uncertain times

New Ways to Think About . . .




. . . Your Thinking Process

What I know for sure...


1. You already know how to navigate uncertainty
2. To be effective, you must think differently about how you think about your thinking processes
3. Everybody can learn to expand their thought habits and rise to the challenge of navigating today's uncertainty

What We'll Cover

1. Where to start when the world turns upside down
2. One thing to create stability
3. One thing to create flexibility
4. One thing to create connection



1
Where to start when the world turns upside down



Pause, reflect and learn

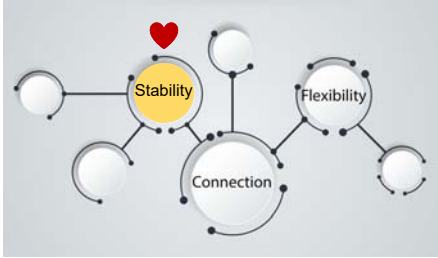
- Where do we need to learn and grow?



2

Creating stability around your purpose

New Ways to Think About . . .




What is stable in the system?

Why are you most essential?

Exploring your purpose Why are you most essential? Why do you matter most? What is the number 1 reason that you must continue to exist?

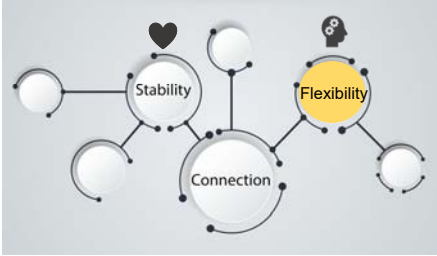
What matters most about our answer above?

Repeat until you reach a deep understanding of your purpose




3
Building flexibility
with new mental
models

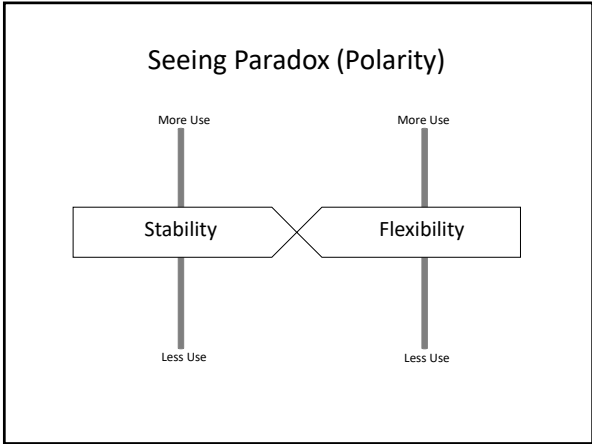
New Ways to Think About . . .

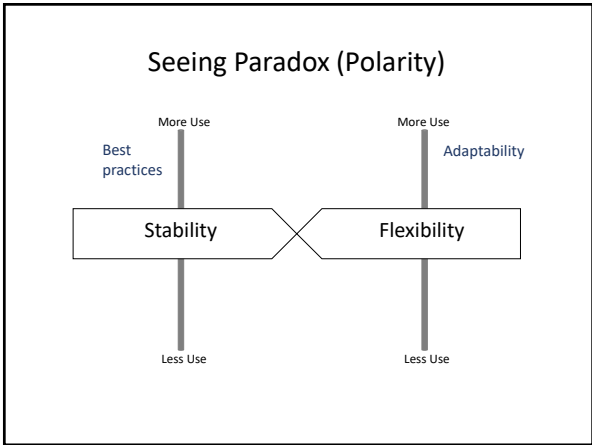


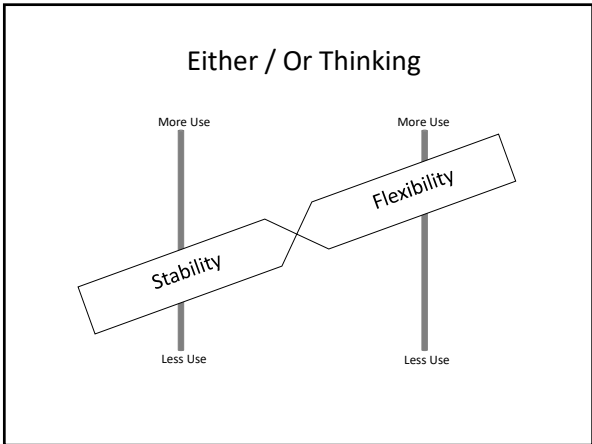
What is flexible in the new system?

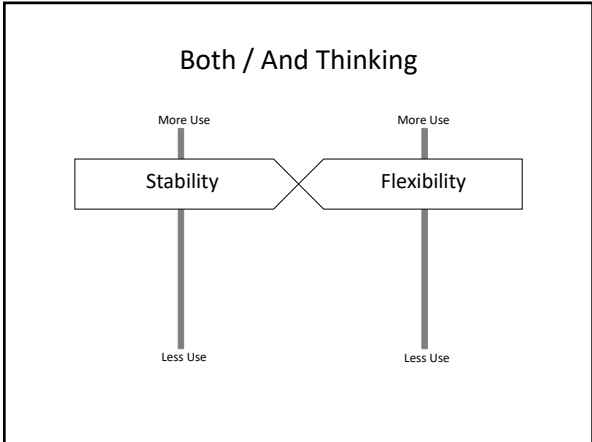


Stability or Flexibility?

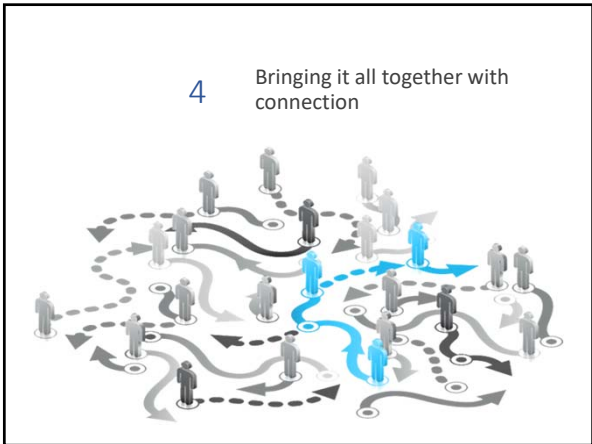




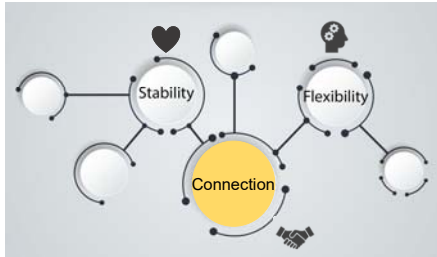






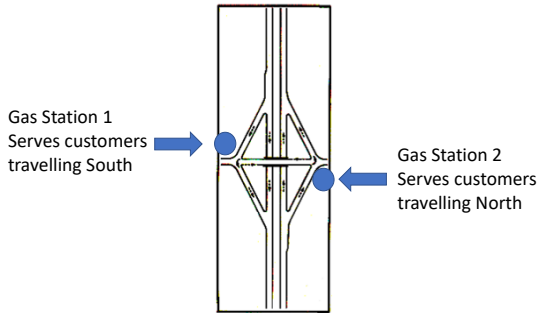


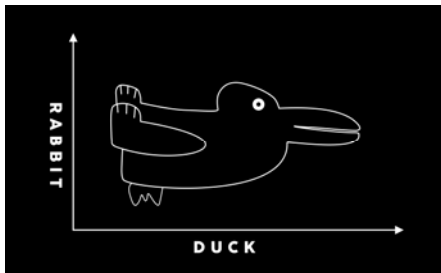
New Ways to Think About . . .



How can we reconnect our system to better sustain our purpose?

Are these gas stations competitors or collaborators?





See the possibilities in your connections!

Roadmap to Creating Your New Roadmap



Your Roadmap is . . .

- Anchored by your purpose
- Flexible in your thinking
- Connected through your actions

How else can I help you?

- ➔ Discussion prompts to help you apply concepts
- ➔ Personal coaching to help you use the discussion prompts
- ➔ Individual journey towards leadership wisdom



Email me at Judy@StratoLeader.com
To get link for scheduling

Abraham Lincoln

“The best way to predict your future is to create it”
