

SO-R060-90

FABRIC TUCK CORNER

SAMPLE SPECIFICATION

specify as: SOFTFORMS® Model # SO-R060-90

Pittcon SOFTFORMS® LLC

6409 Rhode Island Avenue
Riverdale, MD 20737
(800) 637-7638
(301) 927-1000
Fax: (301) 699-8690

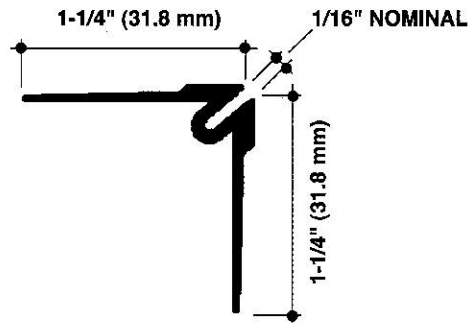
3330 W. Flower Street
Phoenix, AZ 85017
(800) 637-7638
(602) 233-9100
Fax: (602) 233-9400

The extruded aluminum profile shall incorporate a continuous integral fin for surface contact to conventionally installed gypsum drywall. The fins shall be 7/8" wide and shall be tapered to the edge. The tapered fins shall be punched with holes staggered to accept standard screw fastening. A series of continuous grooves shall be extruded into the face of the fins to provide greater bonding surface. The extruded profiles shall be primed with corrosion-resistant primer compatible with materials normally in use in conjunction with commercial interiors, i.e.: joint compound, latex and enamel paints, and wall covering adhesives.

MATERIAL: Aluminum alloy.....6063 T5 or equal
Finish.....Factory primed

SO-R060-90
NO SCALE

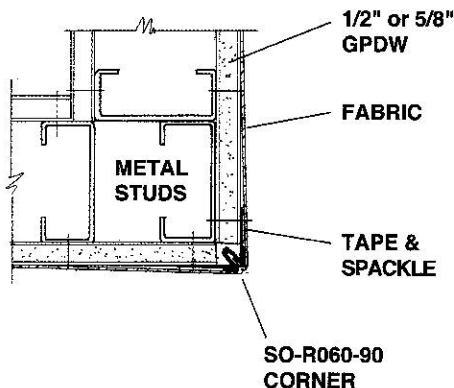
90° OUTSIDE CORNER
WITH FABRIC TUCK



EXAMPLE DETAIL

For use with conventional metal stud construction and 1/2" or 5/8" GPDW.

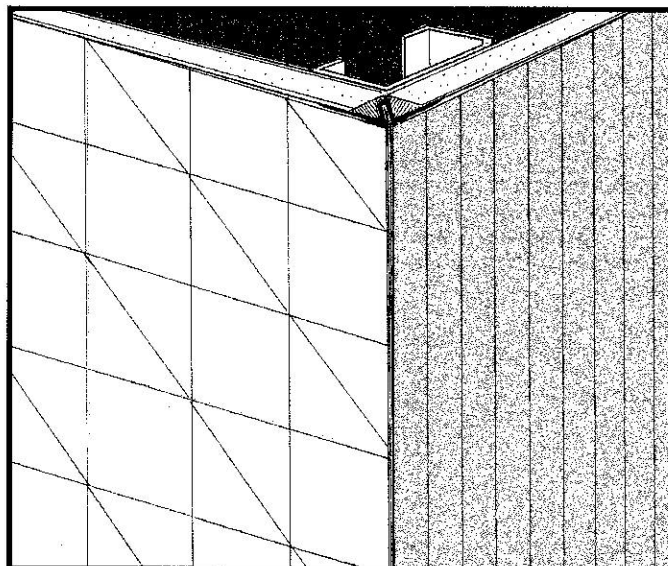
The SO-R060-90 permits a concealed joint for dissimilar wall coverings which meet at a 90° intersection. The wall coverings are inserted by means of a thin "pizza wheel" tool. A small amount of adhesive in the reveal is desirable to prevent any pull away. Screws through the grooved fins must always engage metal or wood substructure to ensure proper installation.



SO-R060-90 + 2-1/2" STUD WALL

NO SCALE

PLAN/SECTION



NOTE:
WHEN TUCKING EDGES OF WALLCOVERING INTO CHANNEL,
ALWAYS APPLY MASTIC FIRST TO ENSURE THAT PROPER
BONDING IS MADE. USE CAUTION NOT TO SCORE OR TEAR
EDGES OF WALLCOVERING WHEN TUCKING.

All details, methods and specifications are the exclusive property of Pittcon Softforms® LLC. Pittcon reserves the right to change any specifications or details without prior notification. All Softforms® profiles are available in standard 10' lengths $\pm 1/8"$ (2.048 M). Other lengths are available as special order items. For custom shapes, sizes, or for special finishes, please contact the factory or your nearest Pittcon sales representative.