

STR SERIES

TRIM REVEALS

SAMPLE SPECIFICATION

specify as: SOFTFORMS®

Model # STR-XXX-XXX

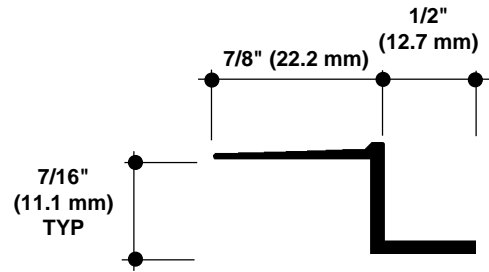
Pittcon SOFTFORMS® LLC

6409 Rhode Island Avenue
Riverdale, MD 20737
(800) 637-7638
(301) 927-1000
Fax: (301) 699-8690

3330 W. Flower Street
Phoenix, AZ 85017
(800) 637-7638
(602) 233-9100
Fax: (602) 233-9400

The extruded aluminum profile shall incorporate a continuous integral fin for surface contact to conventionally installed gypsum drywall. The fins shall be 7/8" wide and shall be tapered to the edge. The tapered fins shall be punched with holes staggered to accept standard screw fastening. A series of continuous grooves shall be extruded into the face of the fins to provide greater bonding surface. The extruded profiles shall be primed with corrosion-resistant primer compatible with materials normally in use in conjunction with commercial interiors, i.e.: joint compound, latex and enamel paints, and wall covering adhesives.

MATERIAL: Aluminum alloy.....6063 T5 or equal
Finish.....Factory primed



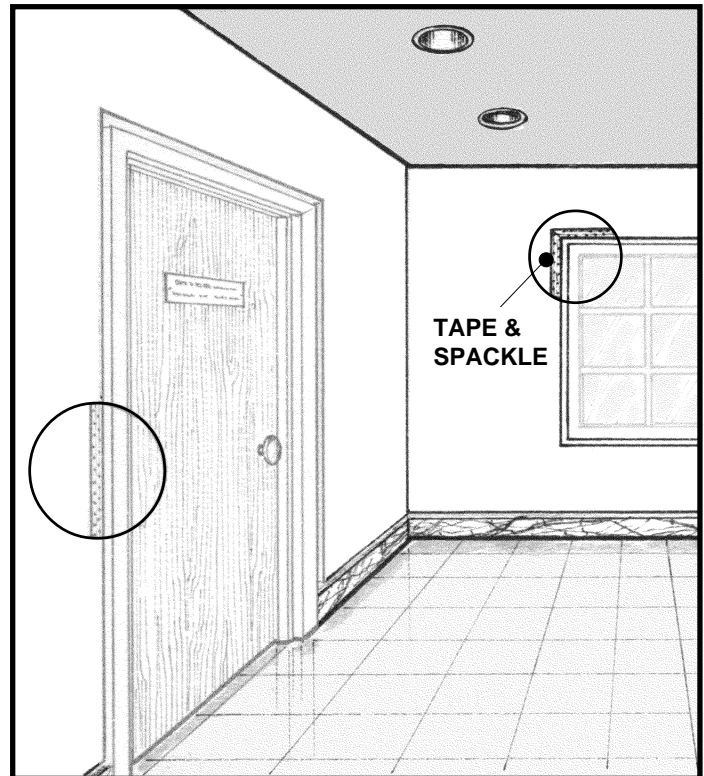
STR-050-050
NO SCALE

TRIM REVEAL
TYPICAL SECTION

SELECTING YOUR SOFTFORMS® STR TRIM SERIES OF ALUMINUM EXTRUSIONS

Select proper SOFTFORMS extrusion from the information below.

STR Model No.	Width	Depth
STR-025-025	1/4" (6.4 mm)	1/4" (6.4 mm)
STR-038-038	3/8" (9.5 mm)	3/8" (9.5 mm)
STR-025-050	1/4" (6.4 mm)	1/2" (12.7 mm)
STR-038-050	3/8" (9.5 mm)	1/2" (12.7 mm)
STR-050-050	1/2" (12.7 mm)	1/2" (12.7 mm)
STR-063-050	5/8" (15.9 mm)	1/2" (12.7 mm)
STR-075-050	3/4" (19.1 mm)	1/2" (12.7 mm)
STR-100-050	1" (25.4 mm)	1/2" (12.7 mm)
STR-150-050	1-1/2" (38.1 mm)	1/2" (12.7 mm)
STR-200-050	2" (50.8 mm)	1/2" (12.7 mm)
STR-025-063	1/4" (6.4 mm)	5/8" (15.9 mm)
STR-038-063	3/8" (9.5 mm)	5/8" (15.9 mm)
STR-050-063	1/2" (12.7 mm)	5/8" (15.9 mm)
STR-063-063	5/8" (15.9 mm)	5/8" (15.9 mm)
STR-075-063	3/4" (19.1 mm)	5/8" (15.9 mm)
STR-100-063	1" (25.4 mm)	5/8" (15.9 mm)
STR-150-063	1-1/2" (38.1 mm)	5/8" (15.9 mm)
STR-200-063	2" (50.8 mm)	5/8" (15.9 mm)



All details, methods and specifications are the exclusive property of Pittcon Softforms® LLC. Pittcon reserves the right to change any specifications or details without prior notification. All Softforms® profiles are available in standard 10' lengths $\pm 1/8"$ (2.048 M). Other lengths are available as special order items. For custom shapes, sizes, or for special finishes, please contact the factory or your nearest Pittcon sales representative.

© 2005 Pittcon SOFTFORMS® LLC.

Softforms

PREFORMED ARCHITECTURAL PROFILES
FOR DRYWALL CONSTRUCTION

SR 5

STR SERIES

TRIM REVEALS

SAMPLE SPECIFICATION

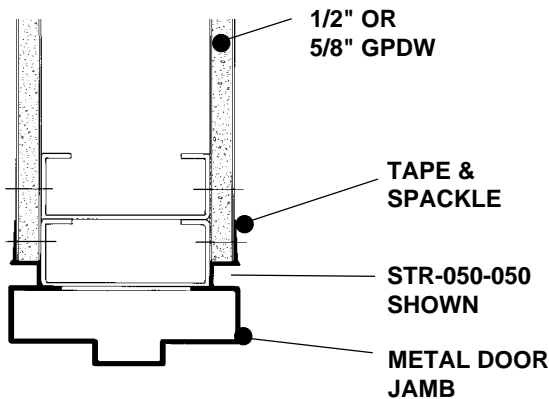
specify as: SOFTFORMS®

Model # STR-XXX-XXX

EXAMPLE DETAIL

For use with conventional metal stud construction with 1/2" or 5/8" GPDW

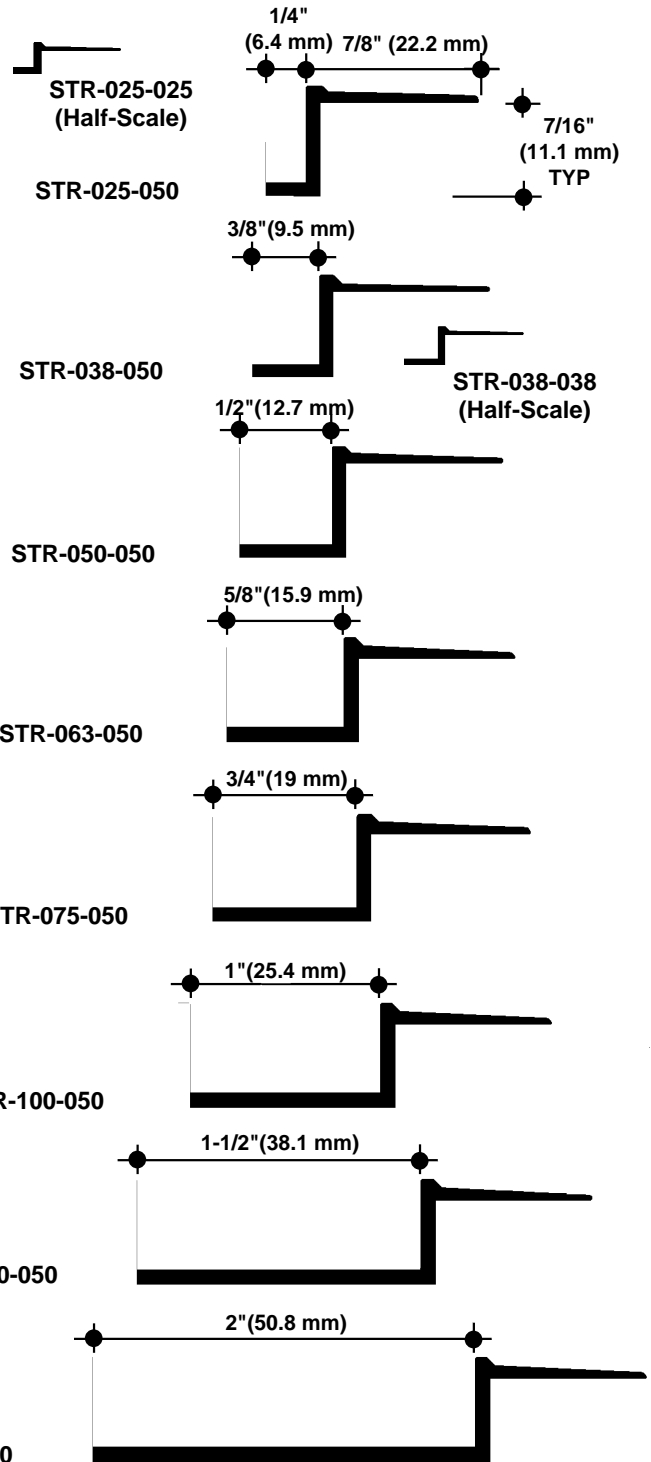
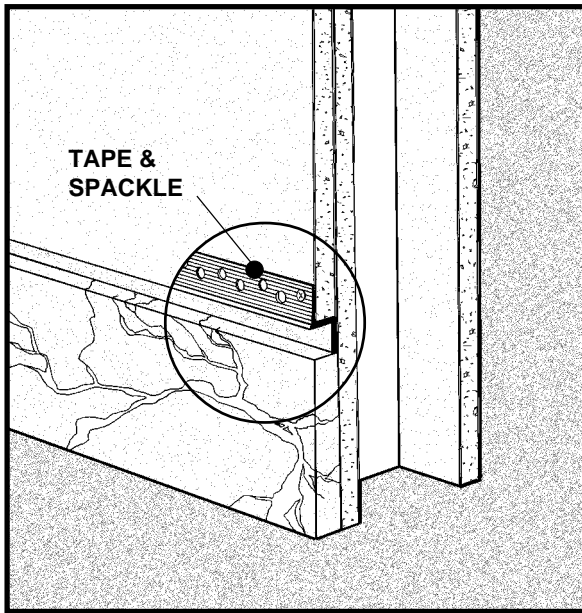
The STR SERIES of trim reveals permits the introduction of a decorative reveal (recessed) adjacent to other architectural components such as door jambs, base trim, case goods, etc. Stud layout may vary according to the particular product used. Screws through the grooved fins must always engage with metal or wood substructure to ensure proper installation.



STR TRIM @ DOOR JAMB REVEAL

NO SCALE

PLAN/SECTION



NOTE:

Profiles shown on this page are for 1/2" (12.7 mm) depth GPDW only. Also available are models for 5/8" (15.9 mm) depth. See front-side of this page for model numbers and ordering information.

STR SERIES OF TRIM REVEALS

NO SCALE

SECTIONS

Pittcon SOFTFORMS® LLC

6409 Rhode Island Avenue
Riverdale, MD 20737
(800) 637-7638
(301) 927-1000
Fax: (301) 699-8690

3330 W. Flower Street
Phoenix, AZ 85017
(800) 637-7638
(602) 233-9100
Fax: (602) 233-9400

Softforms
PREFORMED ARCHITECTURAL PROFILES
FOR DRYWALL CONSTRUCTION