



1000 Watt Xenon Searchlight

"U.S. Coast Guard-Approved"



Beam Intensity	80 Million Candela
Distance Serviced	1 lux at 8944 meters
Beam Speed	25° per sec (Fast/Horiz.) 3° per sec (Slow/Horiz.)
Color Temperature	6000 Kelvin
Lamp	1000 Watt, Xenon Short Arc
Voltage	115VAC/18 Amps or 230 VAC/9 Amps; 50/60HZ
Horizontal Span	Beyond full circle, 385° with sliding stop
Vertical Span	+35° to -35°
Environmental Protection	IP56
Temperature Range	-40 °C to +55 °C (Survivability down to -46.8 °C)
Beam-Size Focus	Electric switch widens and narrows beam on demand
Joystick Controller	Proportional-Speed Joystick controls the Speed and Direction with a Single Hand (weatherproof options offered)
Marine Grade Design	Marine Aluminum and Stainless Steel with Salt-Resistant, Scratch-Resistant, Powder Coat Finish
Bullet-Resilient	Precision Reflector made of Indestructible Nickel Material

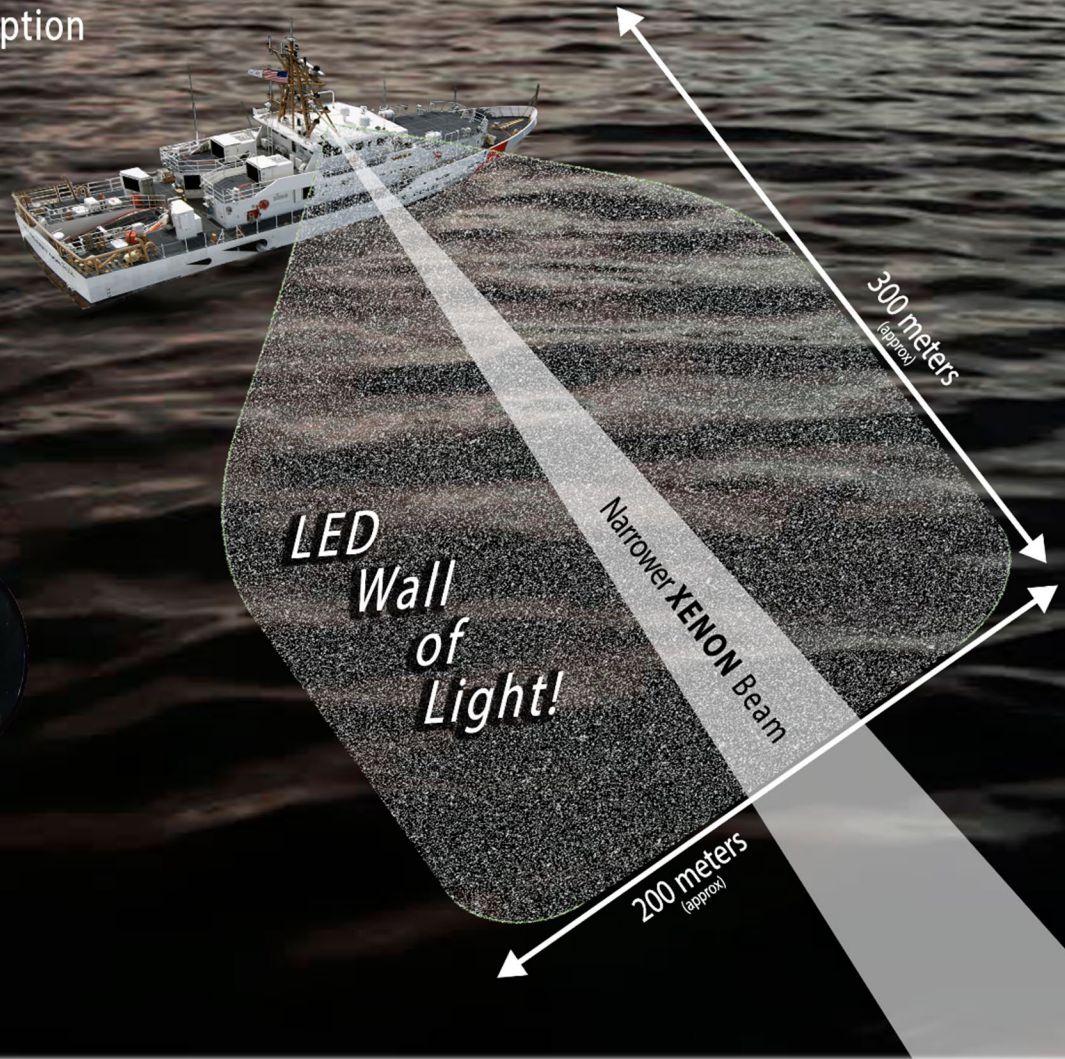
OPTIONS

Anti-icing Heaters	Thermostatically-controlled heaters prevent Ice build-up.
Azimuth Indicator	LCD Panel displays horizontal aiming position in degrees.
LED IR Illuminator	Provides covert surveillance when used with Cameras and NVG's.
LED "Wall of Light"	Auxiliary LEDs project a "Wall of Light" which illuminates wide areas close to the vessel, where the narrower xenon beam cannot service. (see Page 2 Beam Pattern and details).
High Powered Strobe	Disorients and denies the night vision of an intruder and transforms searchlight into a Nonlethal Weapon.
Manual Back-up	If any motor fails, searchlight can be aimed manually in back-up mode, instantly with no tools required.
NightFINDER™	Thermal camera enhances night vision capability, and the searchlight beam and camera track on the same target.
SmartVIEW™	Control System provides Digital BUS Network, and TCP/IP Interface allows Remote Computer Control. Protocols supported: ONVIF, Pelco-D, NMEA 0183 and C&F's Protocol

Lighting the way forward since 1894

LED Hybrid "Wall of Light" Option

"Wall of Light"
LEDs



Imagine a passenger suddenly falls overboard. Using the auxiliary wide-beam LEDs for **Search and Rescue**, an operator instantly directs a powerful "Wall of Light," wider than a football field, anywhere around the vessel for immediate rescue. Or during **Vessel Interdiction**, the captured boat is entirely illuminated at close range, providing law enforcement total situational awareness in the dark of night.

The "Wall of Light" is also effective for **Anti-piracy**, **Docking Safety**, **Helping Workers See at Night**, **Spotting Floating Debris**, and much more! The "Hybrid" searchlight combines wide-beam LEDs, with long-distance Xenon Search capability, into one versatile product!

1000 Watt Xenon Power Supply

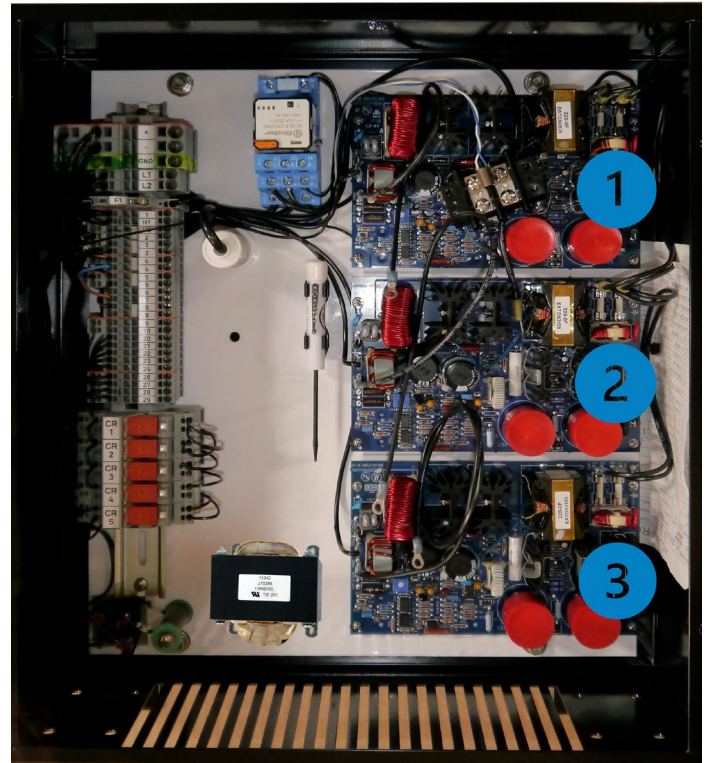
includes Multi-Board Safety Back-up

15% more efficient
1/3 the weight and size

compared to previous models

Features

- 120 & 230 VAC models available
- Backward compatible with previous power supply generations
- Integrated hour meter / ammeter
- Multi-Board Safety Back-up
- Optional outdoor models available
- Optional 24VDC output for "Wall of Light" LEDs



Three Electronic Boards in Parallel provide Built-in Redundancy.

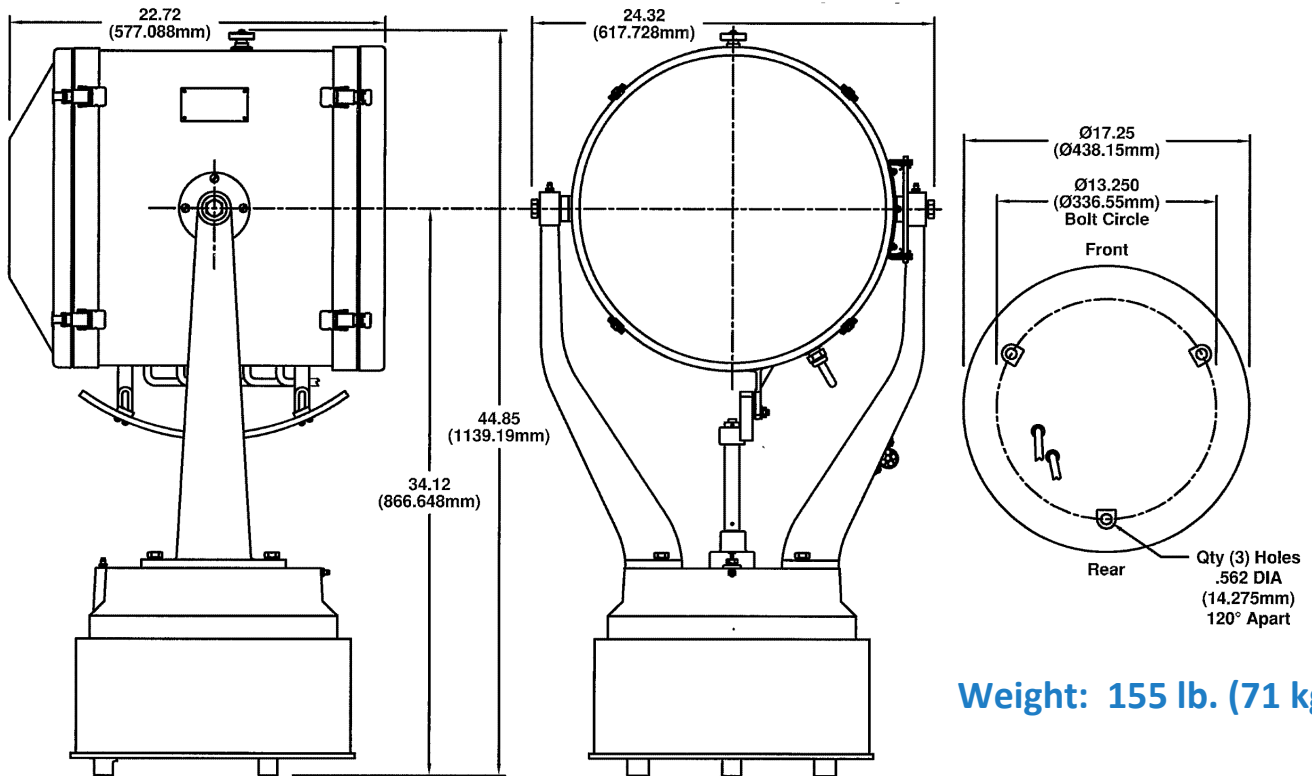
Front Cover



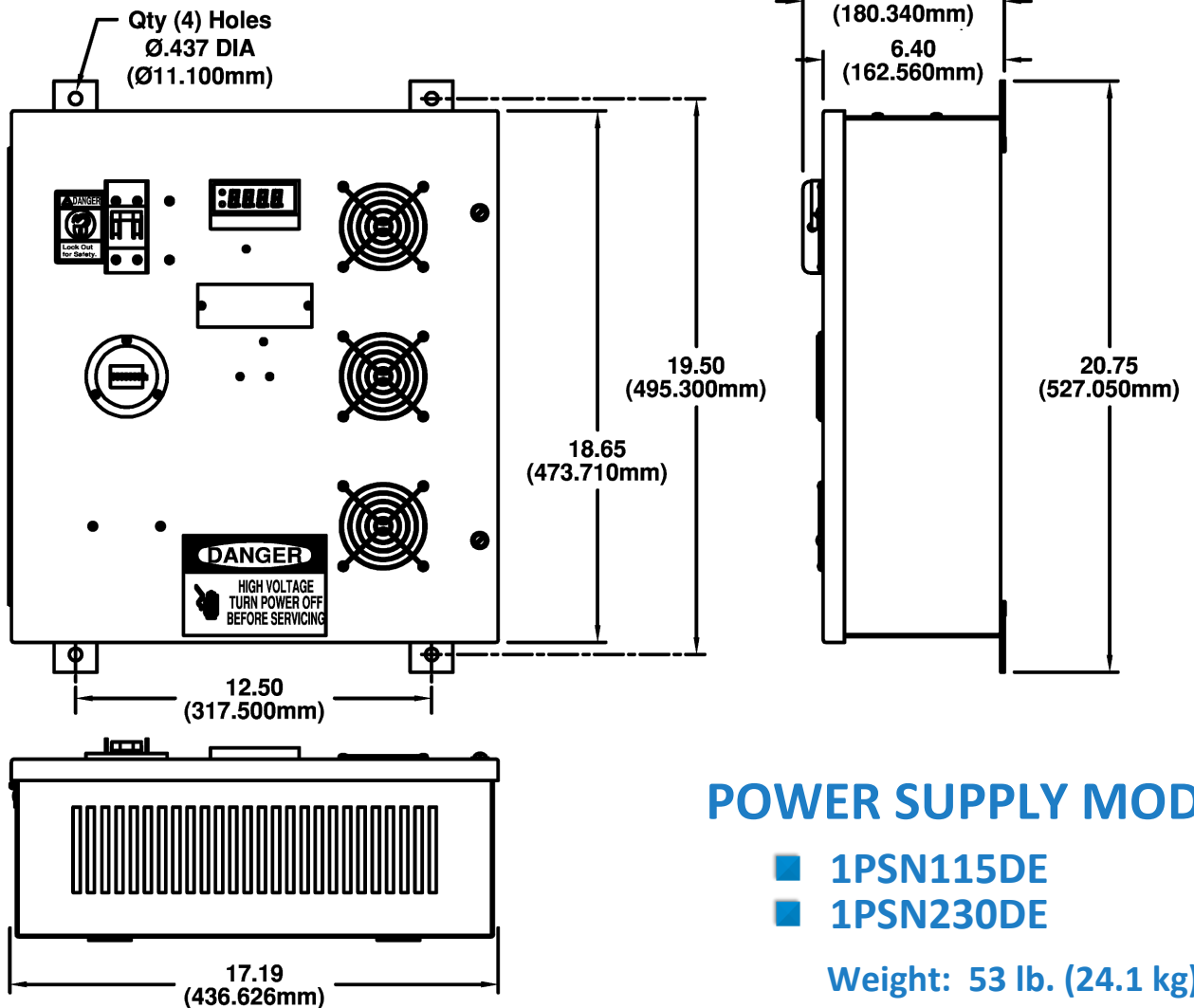
Multi-Board Safety Back-up

CARLISLE & FINCH'S unique design has multiple electronic boards connected in parallel which provide built-in redundancy. Our searchlights remain operational in "back-up" mode, if a board fails. This feature ensures greater searchlight reliability and only offered through **CARLISLE & FINCH**. Other searchlights suffer complete outages if there is an electronic board failure.

1000 Watt Dimensions in inches (mm)



Weight: 155 lb. (71 kg)



POWER SUPPLY MODEL

- 1PSN115DE
- 1PSN230DE

Weight: 53 lb. (24.1 kg)

Joystick Dimensions inches (mm)



Proportional-Speed Joystick controls the Beam Speed and Aiming Direction with a single hand, freeing up the other hand to steer vessel, hold binoculars, etc.

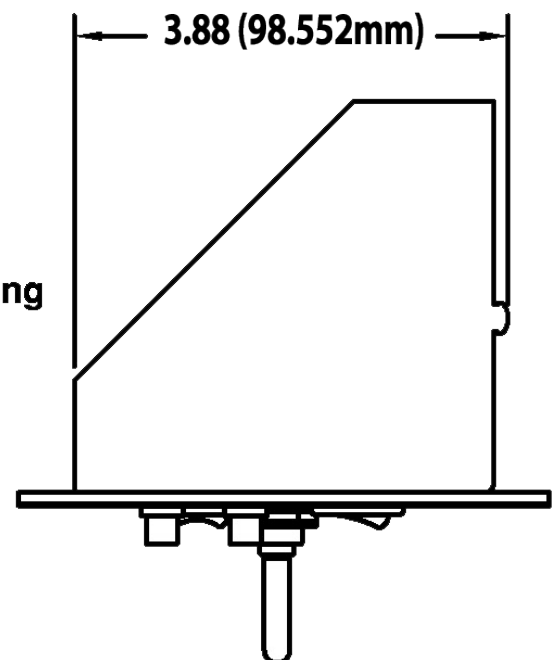
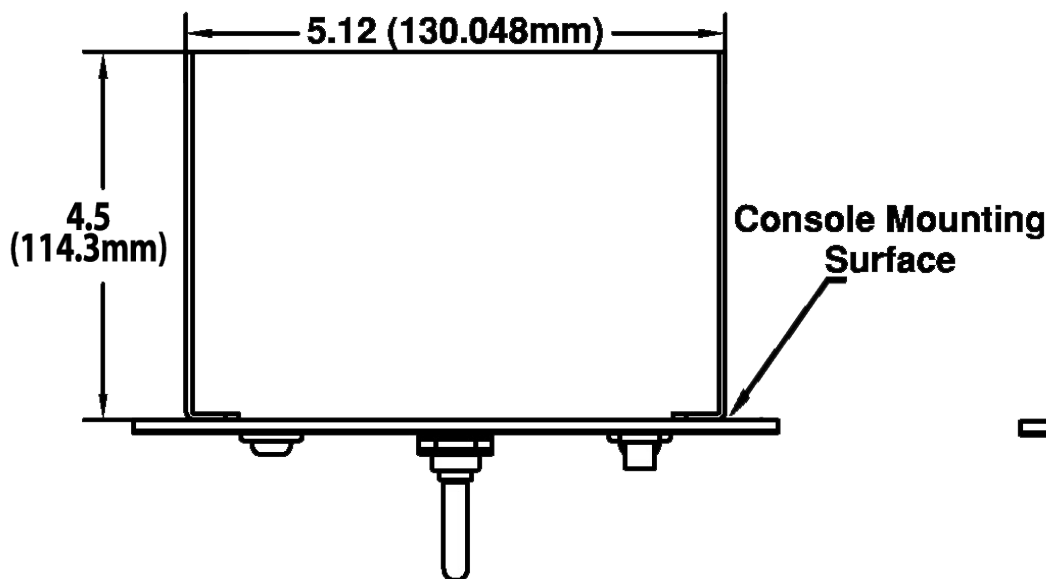
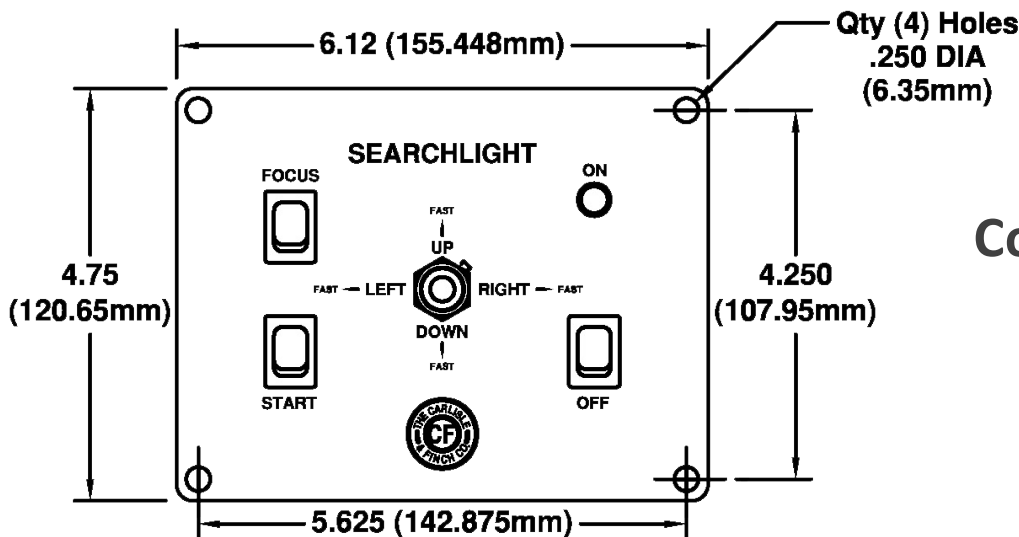
Beam moves slowly at the first position and speeds up at the second position.

Additional Functions:

- Beam-ON Indicator Light (*Indoor stations only*)
- Beam-ON/OFF
- Beam-Size Focus
- Emergency Hazard Light

Controller Models:

- C4-1M-2 (Indoor)
- C4E1M-2-2 (Outdoor)
- C6-3M-L2 (LED Hybrid)



Searchlight System Specification Table

How to select searchlight model numbers ... read across table and select one searchlight, one power supply, and one or more indoor or outdoor controllers.

Searchlight	Power Supply	Indoor Controller	Outdoor Controller
XE9666-RF (Standard) XE9666-HRF (w/Anti-Icing Heaters)	1PSN115DE (115 VAC) 3PSN230DE (230 VAC)	C4-1M-2	C4E1M-2-2

Specifying Model Numbers for Options:

- LED Hybrid “Wall of Light”**

After selecting searchlight from above table, add LED Assembly model K15215X-1000 as a separate line item. Add “-L” to Power Supply (i.e., 1PSN115DE-L or 1PSN230DE-L). Then add one or more joystick controllers’ model C6-3M-L2.

- Strobe**

After selecting searchlight from above table, add “S” to the power supply model (i.e. 1PSN115DES-S or 1PSN230DES-S). Note: Installer must supply ON/OFF switch for strobe.

- Azimuth Indicator**

Add “A” after the hyphen in searchlight model number (i.e., XE9666-ARF or XE9666-AHRF) and add Azimuth Indicator Panel model 10569A as a separate line item.

- Manual Back-up**

Add “M” after the hyphen in searchlight model number (i.e., XE9666-MRF or XE9666-HMRF).

- NightFINDER™ Thermal Camera**

Add thermal camera model NF14400X-19 as a separate line item.

Note: Installer must provide a 12 VDC 25 watt circuit and Camera ON/OFF Switch.

- SmartVIEW™ Digital Control**

Consult Factory for model numbers.

Below are examples of orders demonstrating the selection of correct model numbers

Example 1: A 115 VAC Searchlight with Anti-icing Heaters and includes (1) Indoor and (1) Outdoor Controller consists of the following: Model XE9666-HRF Searchlight, Model 1PSN115DE Power Supply, Model C4-1M-2 Master Indoor, and Model C4E1M-2-2 Secondary Outdoor Controller.

Example 2: A 230 VAC Searchlight with LED Hybrid “Wall of Light”, Strobe and (2) Indoor Controllers consists of the following: Model XE9666-HRF Searchlight, Model K15215X-1000 LED Assembly, Model 1PSN230DES-L Power Supply, and (2) Model C6-3M-L2 Controllers.

Example 3: A 115 VAC Searchlight with Anti-icing Heaters, LED Hybrid “Wall of Light”, Strobe, Manual Back-up and (2) Indoor Controllers consists of the following: Model XE9666-HMRF Searchlight, Model K15215X-1000 LED Assembly, Model 1PSN230DES-L Power Supply, and (2) Model C6-3M-L2 Controllers.