

500 Watt Xenon Searchlight

Remote Lever-Gear Control with Electric Beam-Size Focus

Features



Standard of U.S. Coast Guard, U.S. Navy, and U.S. Prison System!

- **Beam Intensity:** 45 Million Beam Candlepower illuminates an object or person approximately 6708 meters away on a clear night!
- **Electric Beam-Size Focus:** Beam can be widened and narrowed electrically, throughout a continuous spectrum.
- **Beam-size Focus Knob:** External Knob changes beam-size with no tools, and provides back-up should the focus motor fail.
- **Beyond 360° of Rotation...** Unique Sliding-Stop Design allows 385 Degrees horizontal motion.
- **"Multi-board Safety Back-up"...** electronic design incorporates two boards in parallel, and if one fails, the beam will still operate in back-up mode!
- **Bullet-Resistant Reflector...** Precision-Optic Reflector with virtually indestructible Nickel Material helps prevent breakage if fixture is impacted by bullets or rocks.
- **Robust Lever-Gear Aiming Assembly...** twist the lever handle and a rack and pinion design moves head up and down with a built-in friction brake. Swing Lever side to side for horizontal aiming.
- **NightFINDER™ Thermal Camera (optional):** Embedded camera provides greater Night Vision Capability, and the Searchlight and Camera track on the same object!
- **LED Hybrid (optional):** Auxiliary LED Light Modules project a "Wall of Light", 150 Meters Wide and over 230 Meters away, for strategic wide area, short-range lighting.
- **Finish:** Salt-resistant Powder Coat (Custom colors too!)

Searchlight Specifications

Electric Beam-Size Focus: 1 to 20° (throughout continuous spectrum)

Temperature Range: -25 °C to +48 °C (approx)

Environmental Protection: IP56

Power Consumption: 115VAC/12 Amps or 230 VAC/6 Amps; 50/60HZ

Vertical Span: +35 Deg to -35 Deg (Total 70 Deg approx)

Horizontal Span: Beyond Full Circle (385 Degrees with sliding stop)

Lamp: 500 Watt, Xenon Short Arc, 6500 °Kelvin

Beam Intensity: 45 Million Candela

Distance Serviced measuring 1 LUX: 6708 Meters on a clear night

Reflector: Precision Electroformed, Nickel Material, Bullet-Resistant

Materials: Marine Grade Aluminum and Stainless Steel



"Leaders in Searchlight Technology for over 122 years"

Electronic Power Supply with Multi-Board Safety Back-up!

GO GREEN with the New C&F 500 Watt Xenon Power Supply... "Less than 1/3 the weight, Less than 1/3 the size, and 15% more efficient than previous models."

Features

- ⊙ Light Weight
- ⊙ Small Footprint
- ⊙ Improved Efficiency
- ⊙ *Multi-Board Safety Back-up Design
- ⊙ 120 & 230 Volt Models Available
- ⊙ Integrated Hour Meter and Ammeter
- ⊙ Optional Outdoor Models Available
- ⊙ Backward compatible with previous generation power supplies



Qty(2) Electronic Boards in parallel provide immediate Safety Back-up!

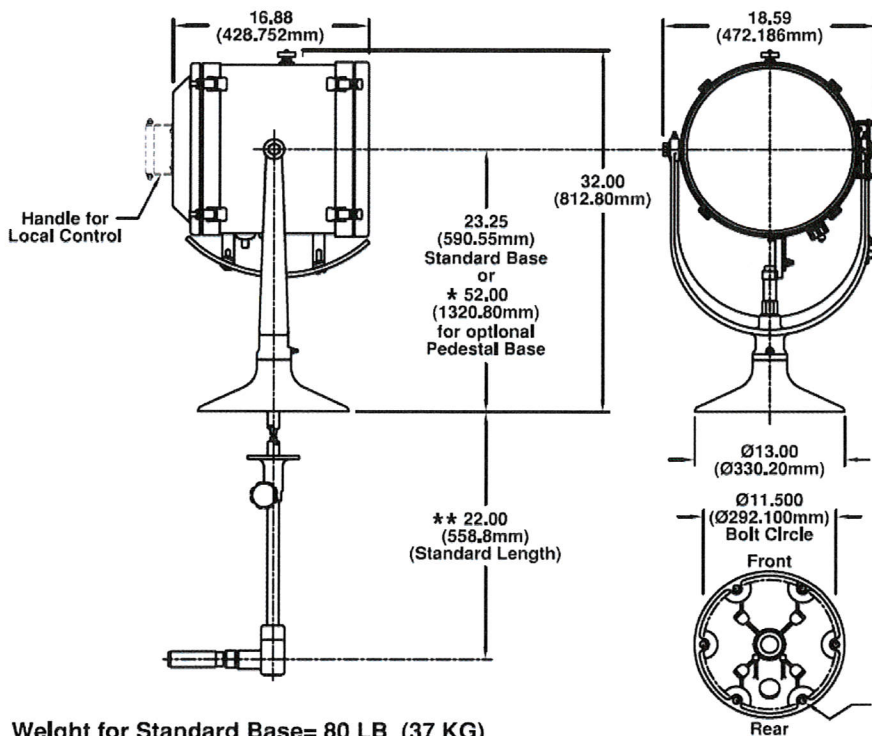
***Multi-Board Safety Back-up Design:** The unique Carlisle & Finch design has multiple electronic boards connected in parallel which provide built-in redundancy. If a board fails, the searchlight will still operate in "back-up" mode. This feature insures greater searchlight reliability, and is offered by no other searchlight company in the world. Other searchlights, have a complete outage, if an electronic board fails!



"Leaders in Searchlight Technology for over 122 Years"



500 Watt Xenon Searchlights Models X9396LG-RF and X9396LG-HRF Dimensions in Inches (mm)



Weight for Standard Base= 80 LB (37 KG)
Weight for Pedestal Base= 95 LB (43 KG)

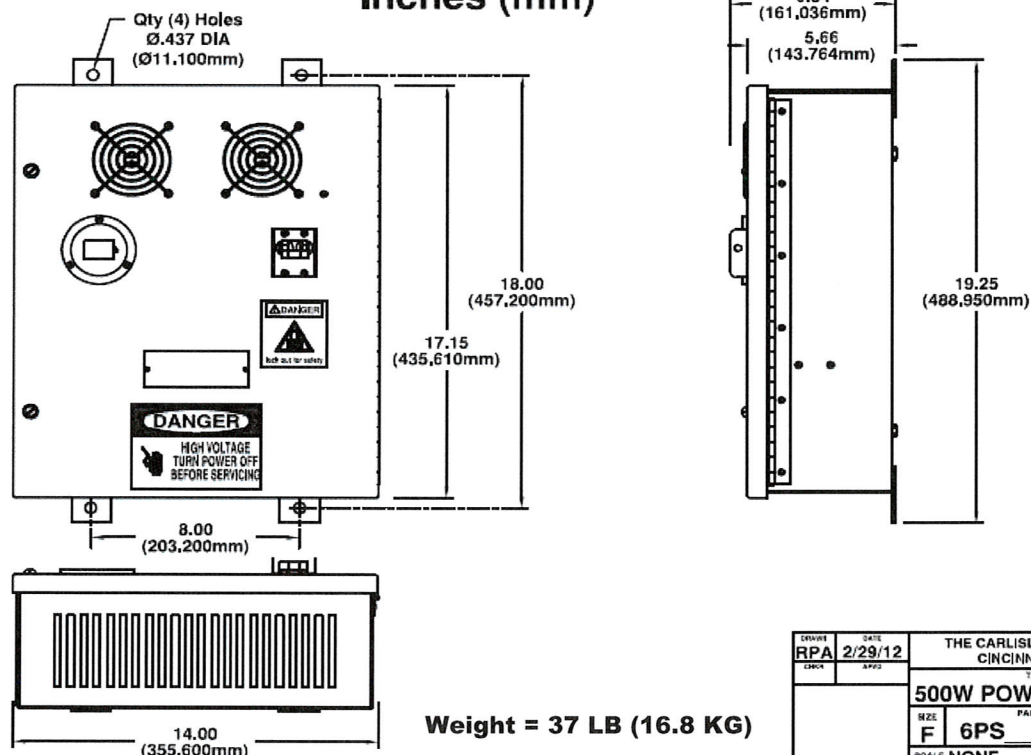
* NOTE: This height can be made to any length as specified by customer. Consult factory for custom dimension.

** NOTE: This control length can be any length as specified by customer. Consult factory for custom dimension.

DESIGN	DATE	THE CARLISLE & FINCH CO. CINCINNATI, OHIO	
RPA	9/18/06	TITLE	
CHKD	APPR	500W SEARCHLIGHT	
		SIZE	PART NO. REV
		F	X9396LG- (DIM)
		SCALE	NONE SHEET 1 OF 1



500 Watt Xenon Power Supply Dimensions Inches (mm)



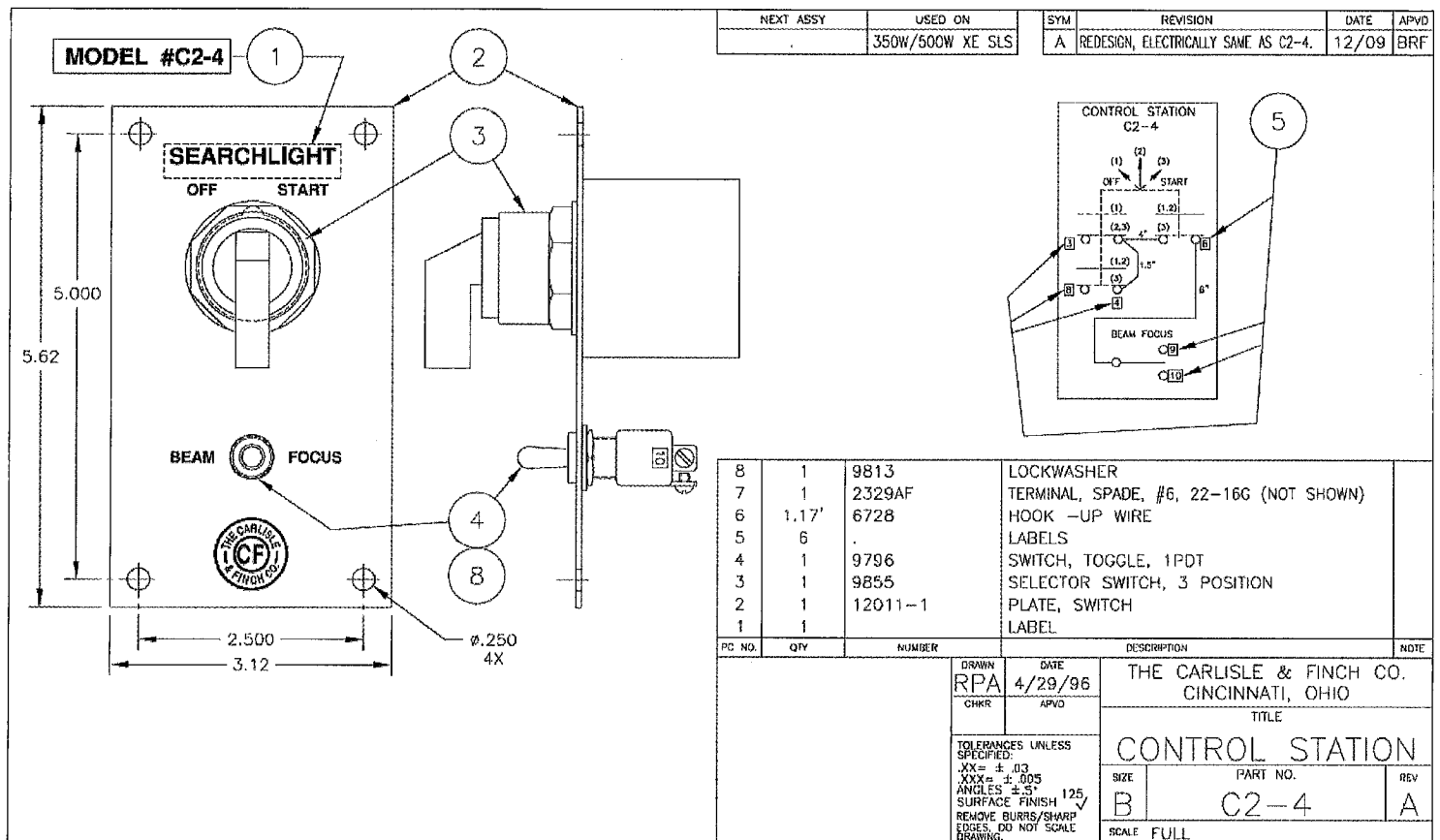
Weight = 37 LB (16.8 KG)

DESIGN	DATE	THE CARLISLE & FINCH CO. CINCINNATI, OHIO	
RPA	2/29/12	TITLE	
CHKD	APPR	500W POWER SUPPLY	
		SIZE	PART NO. REV
		F	6PS (DIM)
		SCALE	NONE SHEET 1 OF 1



"Leaders in Searchlight Technology for over 122 Years"

Control Station Dimensions in Inches



How to Specify a Searchlight System

Searchlight Model	Power Supply Model	Control Station Model
X9396LG-RF	6PSN115 (115 VAC) or 6PSN230 (230 VAC)	C2-4

How to Specify a System:

Read across the table and select one Searchlight, one Power Supply and one Control Station.

NOTE:

Then specify Lever Control Length (reference previous page 3), and see the dimension **22 inches marked by the double asterisk. This is the standard length, but this dimension can be specified to any length which meets the customer's exact requirement. Please consult Factory for the custom length you desire.

Example Order:

Searchlight powered from 115VAC Input... Qty(1) X9396LG-RF, Qty(1) 6PS115, Qty(1) C2-4.

Note: To add an Optional Thermal Camera and/or LED Hybrid Feature, Consult Factory.