



Wintech

WINCHES & FAIRLEADS



INLAND MARINE DECK EQUIPMENT

DW SERIES DECK WINCH

THE DECK WINCH HAS BEEN REINVENTED...

OPERATION BUZZER

- BEEPS WHEN WINCH OPERATES
- ADJUSTABLE VOLUME
- MOUNTED ON MOTOR JUNCTION BOX
- PROTECTED BY TOP GUARD

MOTOR

- TENV MARINE DUTY IP66 RATED
- EPOXY DIPPED WINDINGS
- TRI-VOLTAGE (208-230/460)
- ANTI-CONDENSATION HEATER

TOP GUARD

- PROTECTS MOTOR AND CHAIN
- HANDLES FOR EASY REMOVAL
- RUBBER LATCHES TO SECURE
- POWDER COATED ALUMINUM

SEALED MOTOR BRAKE

- IP66 RATED
- NO ADJUSTMENT REQUIRED
- RELAY FOR RAPID RESPONSE
- SPARE DISC INCLUDED

HOLDING DOG

- GRAVITY FED
- DOG/RATCHET WHEEL INSIDE WINCH
- HANDLE OPERATION SAFELY OUTSIDE WINCH
- WINDOW TO VERIFY ENGAGEMENT

BACK GUARD

- COVERS ALL OF WINCH BACK
- HANDLES FOR EASY REMOVAL
- RUBBER LATCHES TO SECURE
- POWDER COATED ALUMINUM
- CUSTOM LOGOS/COLORS OPTIONAL

SHAFT KEEPER PLATES

- REMOVABLE FOR EASY MAINTENANCE
- SHAFT REMOVAL FOR EITHER SIDE OF WINCH
- JACK BOLT HOLES PROVIDED

MANUAL OPERATION

- REMOVABLE HEX STUD (1-1/8" WRENCH)
- OPERATION UNDER EMERGENCY POWER LOSS

HARDWARE

- ALL STAINLESS BOLTS/NUTS
- STAINLESS SPACER BARS
- GALVANIZED SPACER TUBES

DOG RELEASE/LOCKOUT

- FOR EMERGENCY POWER LOSS
- STUD WELDED TO HOLDING DOG
- TIGHTEN NUT TO RELEASE DOG
- DOG CAN BE LOCKED OUT

DRIVE SHAFT BEARING

- STAINLESS STEEL MACHINE HOUSING
- HIGH LOAD CAPACITY BEARING
- SEALED / MAINTENANCE FREE
- JACK BOLT HOLES PROVIDED

FRONT GUARD

- COVERS MOST OF WINCH FRONT
- HANDLES FOR EASY REMOVAL
- RUBBER LATCHES TO SECURE
- POWDER COATED ALUMINUM
- CUSTOM LOGOS/COLORS OPTIONAL

GEARING

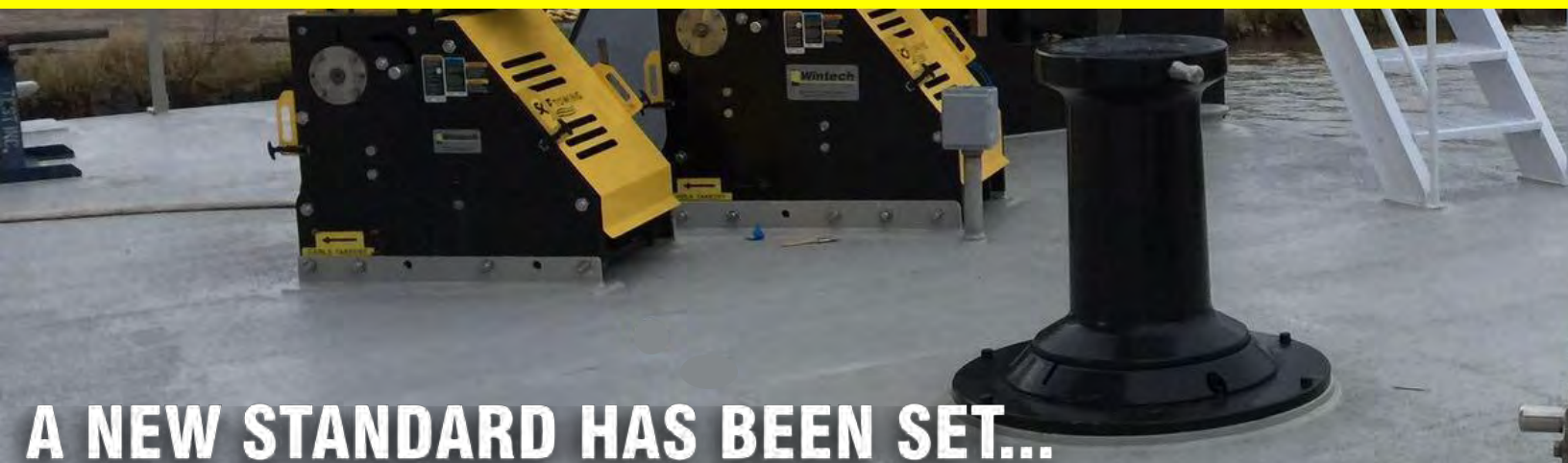
- PRECISION MACHINED
- HEAT TREATED ALLOY STEEL
- NO WEAR AT 125% RATING TEST

CABLE EXIT

- REVERSED EXIT SIDE TO REDUCE BUSHIN LOAD
- NYATRON ROLLERS FOR EXTENDED ROPE LIFE



CTD SERIES CAPSTAN



A NEW STANDARD HAS BEEN SET...



CAPSTAN PEGS

- 316 STAINLESS STEEL
- PRECISION MACHINED
- TAPERED FOR SECURE ROPE DOGGING
- THREADS DIRECTLY INTO CAPSTAN HEAD

CAPSTAN HEAD

- PRECISION MACHINED
- TAPERED HEAD
- WHELPED CORE TO INCREASE GRIP
- GRADUAL TOP/BOTTOM TRANSITION

DIRECT DRIVE

- GEARBOX DIRECTLY COUPLED TO HEAD
- NO EXTERNAL GEARING / WEAR ISSUES
- HEAD ROTATES ON SEALED BEARING
- HIGH BOLLARD PULL CAPACITY

ANGLED BASE PLATE

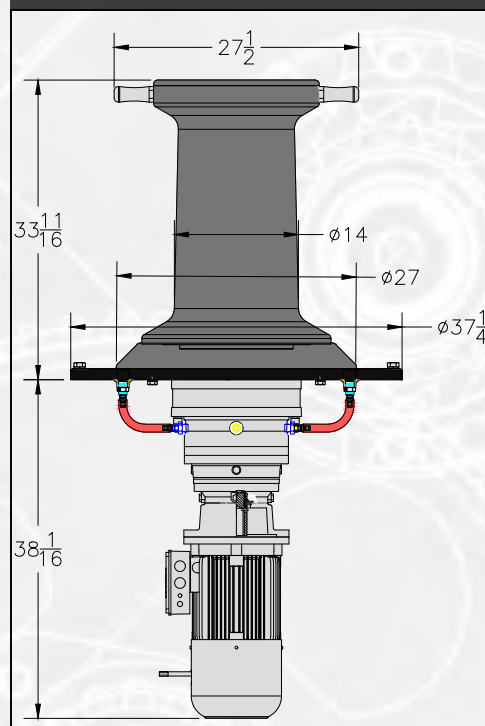
- PRECISION MACHINED
- ANGLE FORCES ROPE ONTO HEAD
- BOLT PATTERN TO MATCH EXISTING
- HEAD RECESSED INTO BASE

GEARBOX/BRAKEMOTOR

- FULL ENCLOSED PLANETARY REDUCER
- OIL LEVEL/FILL ACCESS ABOVE DECK
- TENV MARINE DUTY IP66 MOTOR
- EPOXY DIPPED WINDINGS
- SEALED IP66 BRAKE
- 2 SPEED MOTOR AVAILABLE



DIMENSION DRAWING



PERFORMANCE CHART (LBS)

MODEL	BOLLARD	BRAKE HOLDING	LINEPULL	STALL PULL	LINESPEED	HP
CTD11000-25-2SPD	100,000	27,500	11,000 / 6,750	26,400 / 21,600	25/50	10
CTD12500-25	100,000	32,000	12,500	40,000	25	10

NOTE: CUSTOM LINEPULLS AND LINESPEEDS AVAILABLE

VCW SERIES CAPSTAN



BUILT FOR THE LONG HAUL...

MOTOR GUARD

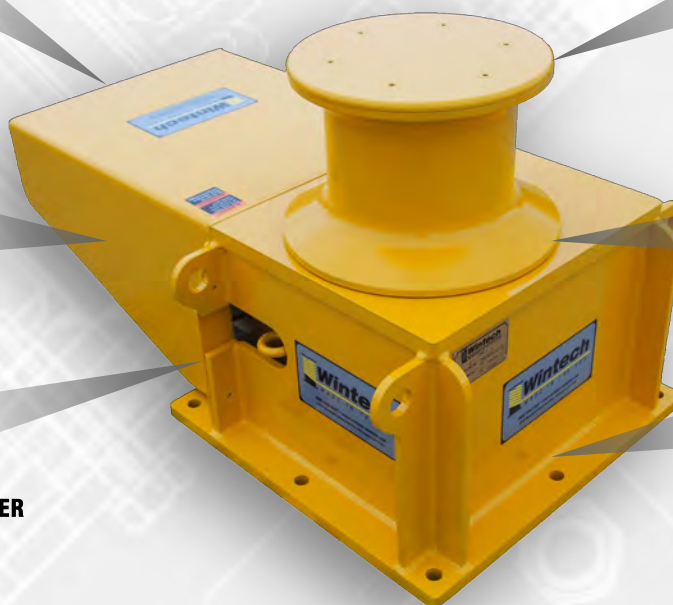
- PROTECTS MOTOR / BRAKE
- BENT AND WELDED STEEL PLATE
- KEEPS TAIL END OF ROPE OFF DECK
- EASILY REMOVABLE

SEALED MOTOR / BRAKE

- TENV MARINE DUTY IP66 RATED
- EPOXY DIPPED WINDINGS
- NO BRAKE ADJUSTMENT REQUIRED

DIRECT DRIVE

- GEARBOX DIRECTLY COUPLED TO HEAD
- FULLY ENCLOSED HELICAL BEVEL REDUCER
- NO EXTERNAL GEARING / WEAR ISSUES
- PRECISION MACHINED COUPLING SHAFT



CAPSTAN HEAD

- PRECISION MACHINED STEEL
- SMOOTH CORE TO EXTEND ROPE LIFE
- PROFILE BASED ON ASTM STANDARD
- HOLES FOR DOGGING PEGS (OPTIONAL)

EXTERNAL BEARING

- SEALED / MAINTENANCE FREE
- REDUCES LOAD ON GEARBOX
- PROVIDES HIGH BOLLARD CAPACITY

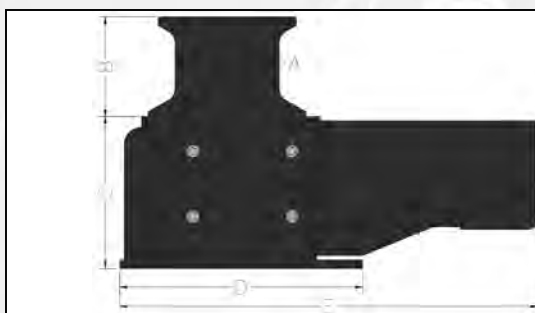
FABRICATED BASE

- FULLY WELDED STEEL FRAME
- COMPLETELY HOUSES GEARBOX
- BOLT PATTERN PROVIDED
- INTEGRAL LIFTING LUGS

PERFORMANCE CHART (LBS)

MODEL	BOLLARD	LINEPULL	STALL PULL	LINESPEED	HEAD SIZE	MAX ROPE SIZE	HP
VCW2500-35-7	20,000	2,500	6,500	35	7	1	3
VCW5000-30-9	30,000	5,000	15,500	30	9	1-1/2	5
VCW7000-25-9	30,000	7,000	19,250	25	9	1-1/2	5
VCW9500-25-12	30,000	9,500	26,125	25	12	2	7.5
VCW12500-25-12	60,000	12,500	40,000	25	12	2	10
VCW15000-20-12	60,000	15,000	48,000	20	12	2	10

NOTE: CUSTOM HEAD SIZES, LINEPULLS, AND LINESPEEDS AVAILABLE



DIMENSION CHART (IN)

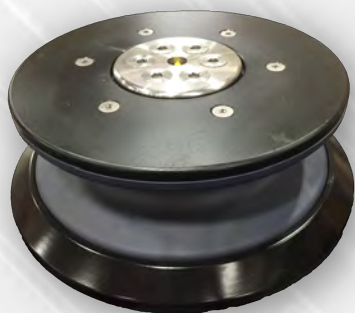
MODEL	A	B	C	D	E
VCW2500-35-7	7	7-3/8	11-1/16	17	32-1/4
VCW5000-30-9	9	8-3/4	15-1/2	24	43-5/8
VCW7000-25-9	9	8-3/4	15-1/2	24	43-5/8
VCW9500-25-12	12	11-9/16	17-1/2	28	48-3/16
VCW12500-25-12	12	11-9/16	20-1/4	32	54-5/8
VCW15000-20-12	12	11-9/16	20-1/4	32	54-5/8

DECK FITTINGS



INNOVATION FROM EVERY ANGLE...

ROLLER BUTTON



- WIDE ANGLE SHEAVE DESIGN
- ALLOWS FOR SOME LOAD ANGLE CHANGE
- NYLATRON OR STEEL SHEAVE
- LARGE DIAMETER ALLOY STEEL SHAFT
- STAINLESS STEEL CAP AND HARDWARE
- NO HOT WORK SHEAVE REPLACEMENT
- GREASEABLE BRONZE BUSHING
- WELDED STEEL BASE AND SHAFT
- CONTOURED BASE TO ASSIST ROPE
- SHEAVE RECESSED FOR NO PINCH POINTS

HI-LO ROLLER BUTTON



- EXTRA WIDE ANGLE SHEAVE DESIGN
- ALLOWS FOR -5 TO 25 LOAD ANGLE CHANGE
- NYLATRON OR STEEL SHEAVE
- VERY LARGE DIAMETER ALLOY STEEL SHAFT
- POWDER COATED STEEL KEEPER PLATE
- STAINLESS STEEL KEEPER RODS AND HARDWARE
- NO HOT WORK SHEAVE REPLACEMENT
- GREASEABLE BRONZE BUSHING
- WELDED STEEL BASE AND SHAFT
- SHEAVE RECESSED FOR NO PINCH POINTS

SELF-ALIGNING ROLLER CHOCK

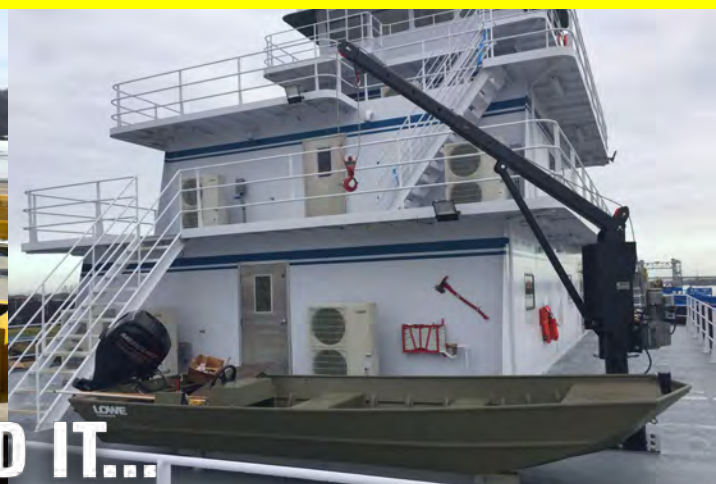


- SELF-FLEETING PIVOT DESIGN
- ALLOWS FOR WIDE LOAD ANGLE CHANGE
- NYLATRON OR STEEL SHEAVE
- DUAL REAR PIVOT PINS
- STAINLESS STEEL PINS AND HARDWARE
- NO HOT WORK SHEAVE REPLACEMENT
- GREASEABLE BRONZE BUSHINGS
- WELDED STEEL UPPER FRAME AND BASE
- CONTOURED REAR ROPE GUARD
- RUBBER BUMPER FOR REDUCED SHOCK

PERFORMANCE CHART

SERIES	MODEL	WORKING CAPACITY	SHEAVE DIAMETER	MAX ROPE SIZE	WEIGHT
ROLLER BUTTON	RB12-40	80,000	12	1-1/4	85
	RB12-40-STEEL	80,000	12	1-1/4	135
	RB16-65	130,000	16	1-1/2	170
	RB16-65-STEEL	130,000	16	1-1/2	220
HI-LO BUTTON	HL12-40	80,000	12	1-1/4	125
	HL12-40-STEEL	80,000	12	1-1/4	175
	HL16-65	130,000	16	1-1/2	210
	HL16-65-STEEL	130,000	16	1-1/2	260
ROLLER CHOCK	RC10-40	80,000	10	1-1/8	115
	RC10-40-STEEL	80,000	10	1-1/8	165
	RC12-65	130,000	12	1-1/4	145
	RC12-65-STEEL	130,000	12	1-1/4	195

DC SERIES DAVIT CRANE



RELIABILITY WHEN YOU NEED IT...

EXTENDABLE BOOM

- ADJUSTABLE FROM 6' TO 10' REACH
- 1 FOOT INCREMENTAL ADJUSTMENTS
- STAINLESS STEEL KEEPER PIN

BOOM SUPPORT

- PROVIDES RIGID STRUCTURE FRAME
- VARIOUS LENGTHS AVAILABLE
- ADJUSTABLE RATCHET OPTIONAL

RIGGING

- JOHNSON HOOK BLOCK PROVIDED
- INCLUDES STAINLESS STEEL CABLE

SINGLE MAST

- NO AUXILIARY SUPPORTS REQUIRED
- BOLT DOWN OR WELD DOWN BASE
- WIDE FOOTPRINT TO SPREAD DECK LOAD



MARINE DUTY PAINT

- MARINE PRIMER
- TWO PART URETHANE TOP COAT
- GALVANIZED FINISH OPTIONAL

STEEL SHEAVES

- PRECISION MACHINED
- POWDER COATED
- SEALED/MAINTENANCE FREE BEARINGS
- STAINLESS STEEL SHAFTS

WINTech WK WINCH

- FULLY ENCLOSED WORM DRIVE
- 1HP TEFC 3 PHASE ELECTRIC MOTOR
- 115/1/60 POWER (3 PHASE OPTIONAL)
- INTEGRAL INVERTER AND CONTROLS
- PENDANT CONTROL FOR RAISE/LOWER
- MANUAL WINCH MODELS AVAILABLE

FULL ROTATION

- 360 DEGREE ROTATION
- HANDLE PROVIDED FOR CONTROL
- ROTATION LOCK EVERY 36 DEGREES

PERFORMANCE CHART

MODEL	CAPACITY	LIFT SPEED (FPM)	REACH	POWER SUPPLY	ROTATION	HP
DC2000	2,000	10	6'-10'	115/1/60	360	1

NOTE: CUSTOM REACH AND CAPACITIES AVAILABLE, "-G" ADDED ON MODEL DESIGNATES GALVANIZED FINISH

BOAT EQUIPMENT RECOMMENDATIONS

BOAT HP	FACING WINCH	WING WINCH	CAPSTAN	DECK FITTINGS	DAVIT
0-1,200 HP	DW30-E5		VCW5000-30-9 VCW7000-25-9	HL12-40 RC10-40 RB12-40	DC200
1,200-4,000 HP	DW40-E7.5	DW40-E7.5 DW65-E7.5 (DEPENDS ON ROPE SIZE)	VCW9500-25-12	HL12-40 RC10-40 RB12-40	DC200
4,000-12,500 HP	DW65-E7.5	DW65-E7.5	CTD12500-25 VCW12500-25-12	HL16-65 RC12-65 RB16-65	DC200

