

TABLE OF CONTENTS

PAGE NUMBER:	DETAIL DESCRIPTION
A-1.....	TABLE OF CONTENTS
A-2.....	GENERAL NOTES
B-1.....	FASTENER PATTERNS
C-1.....	BASE TRIM DETAIL
C-2.....	SIMPLE BASE TRIM DETAIL
C-3.....	WALL TO SOFFIT DETAIL
C-4.....	WALL TO SOFFIT (ALTERNATE) DETAIL
C-5.....	OUTSIDE CORNER DETAIL
C-6.....	OUTSIDE CORNER (OFF MODULE) DETAIL
C-7.....	INSIDE CORNER DETAIL
C-8.....	INSIDE CORNER (OFF MODULE) DETAIL
C-9.....	INSIDE CORNER (ALTERNATE) DETAIL
C-10.....	JAMB TRIM DETAIL
C-11.....	JAMB (ALT. - LOW) TRIM DETAIL
C-12.....	JAMB (ALT. - HIGH) TRIM DETAIL
C-13.....	HEADER DETAIL
C-14.....	SILL TRIM DETAIL
C-15.....	SILL TRIM (ALTERNATE) DETAIL
C-16.....	SPLICE TRIM DETAIL
C-17.....	MASONRY WAINSCOAT TRIM DETAIL
C-18.....	TYPICAL TRIM LAP DETAILS

GENERAL NOTES

The details shown on the following pages are suggestions or guidelines for installing the Nostalgia Board and Batten Panel wall panel system over plywood or OSB. The installation details shown here are proven methods of construction, but they are not intended to cover all building requirements, designs or codes. The details may require changes or revisions due to individual project conditions.

Installation procedures shall be in accordance with the manufacturer's printed instructions, details or approved shop drawings. Installers should thoroughly familiarized themselves with all instructions prior to beginning the installation process.

The designer/installer is responsible to ensure the following:

That the details here meet the particular building requirements.

Awareness of and allowance for expansion/contraction of the roof panels.

That adequate water-tightness is maintained.

That a proper uniform substructure is used to avoid panel distortion and that the substructure meets necessary code requirements.

That all supporting members have been examined and are straight, level and plumb.

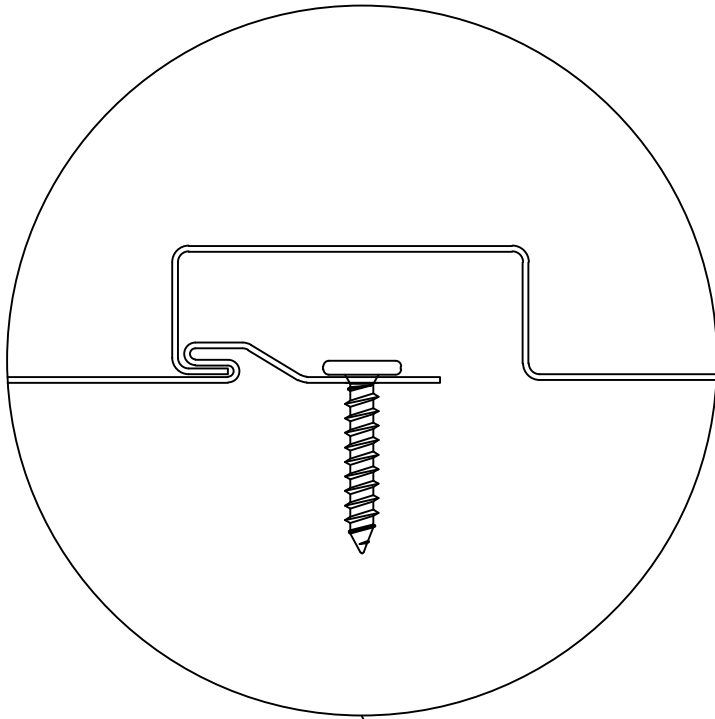
Proform Metal LTD can provide all flashings and accessories shown in the installation drawings unless noted otherwise. Panels, flashing and trim shall be installed true and in proper alignment with any exposed fasteners equally spaced for the best appearance. Sealant shall be field applied on a clean, dry surface.

Some field cutting and fitting of panels and flashings is to be expected and to be considered a part of normal installation work. Workmanship shall be of the best industry standards and with installation performed by experienced metal craftsmen.

Oil canning of metal panels is inherent in metal and is not a cause for rejection.

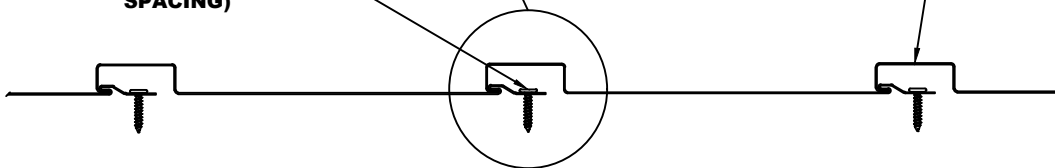
Contents of this manual are subject to change without notice. To confirm this book is the most current copy, please visit Proform Metal LTD's website at www.proformmetalltd.com.

FASTENER PATTERNS

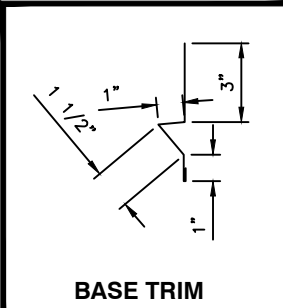
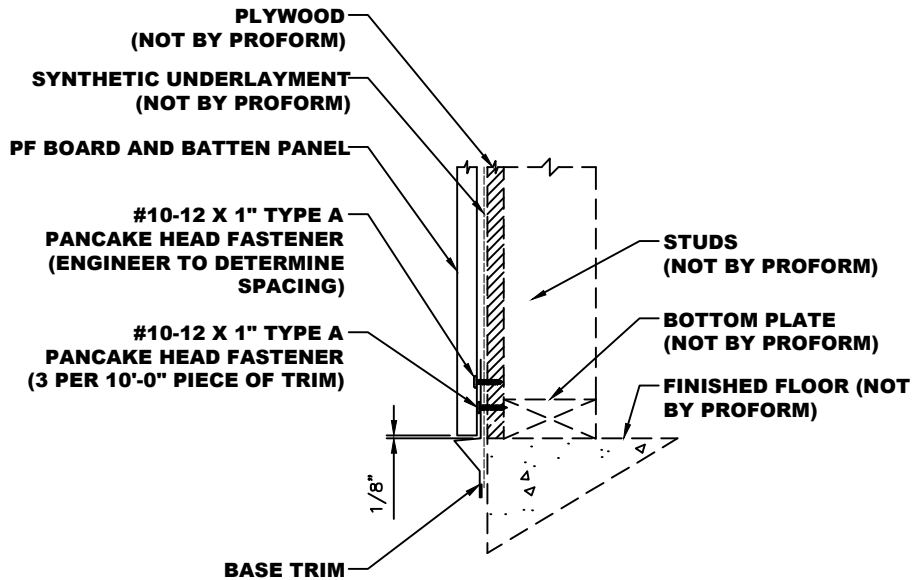


#10-12 X 1" TYPE A
PANCAKE HEAD FASTENER
(ENGINEER TO DETERMINE
SPACING)

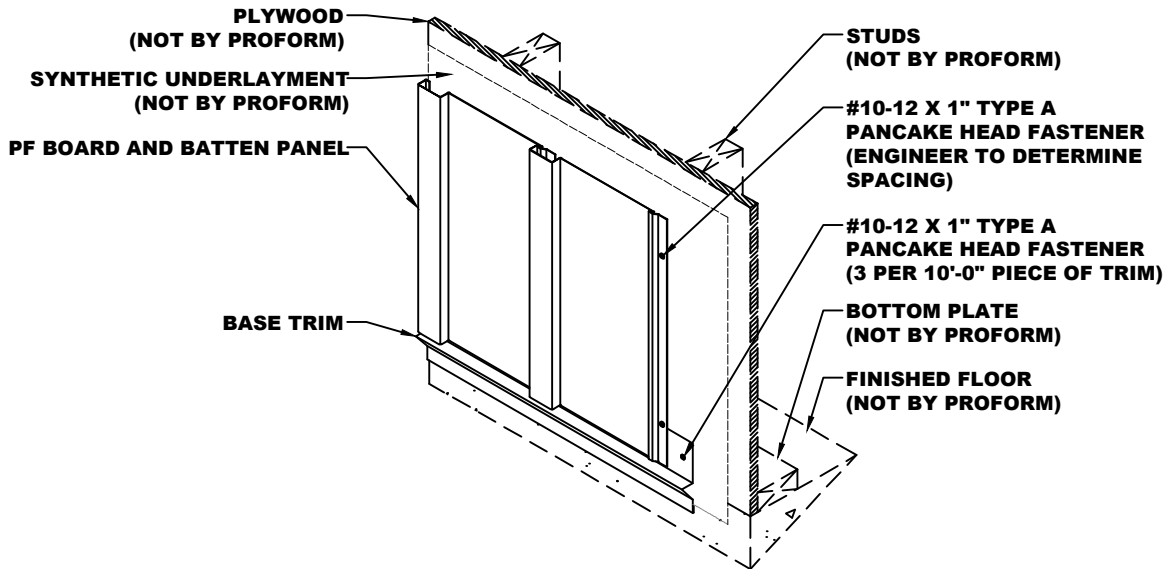
BOARD & BATTON PANEL



BASE DETAIL

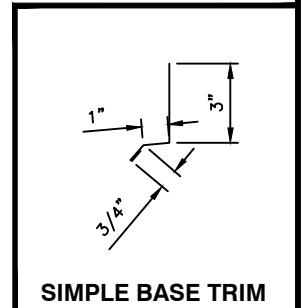
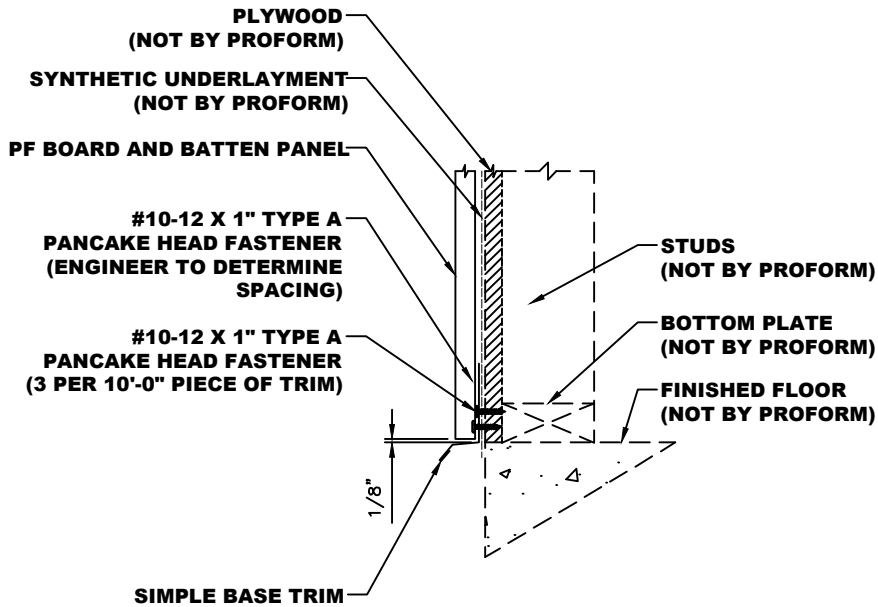


- NOTES:**
1. Attach Base Trim to plywood with #10-12 x 1" Type A Pancake Head Fasteners at (3) per 10'-0" piece of trim.
 2. Install the PF Board and Batten Panel making sure to hold the edge of the panel 1/8" or more up off the Base Trim with #10-12 x 1" Type A Pancake Head Fasteners at the spacing determined by your Project Engineer.

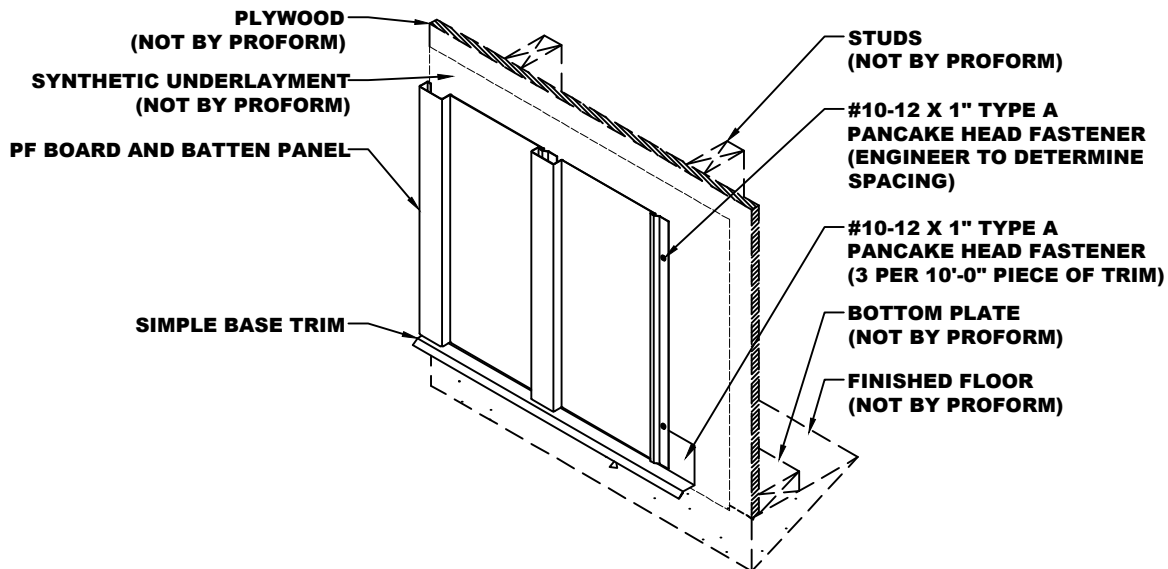


*NOTE: SOME TRIM ITEMS AND FASTENERS HAVE BEEN REMOVED FOR CLARITY OF ISOMETRIC

SIMPLE BASE DETAIL

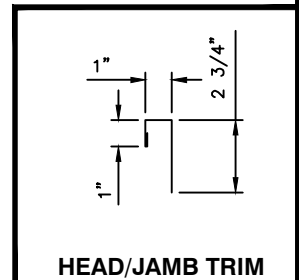
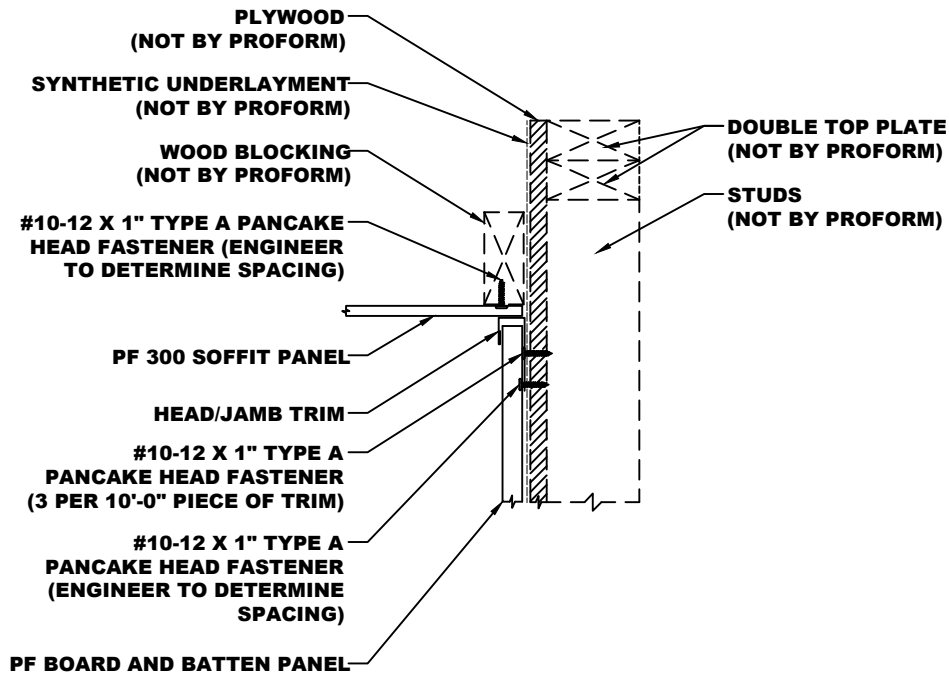


- NOTES:**
1. Attach Simple Base Trim to plywood with #10-12 x 1" Type A Pancake Head Fasteners at (3) per 10'-0" piece of trim.
 2. Install the PF Board and Batten Panel making sure to hold the edge of the panel 1/8" or more up off the Simple Base Trim with #10-12 x 1" Type A Pancake Head Fasteners at the spacing determined by your Project Engineer.



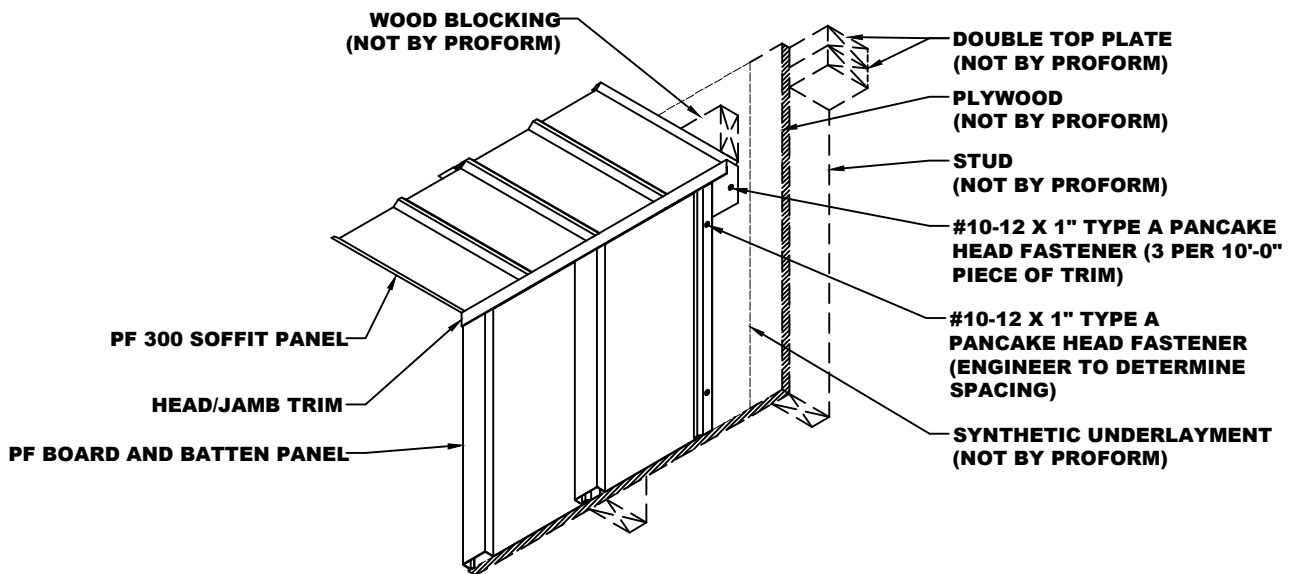
*NOTE: SOME TRIM ITEMS AND FASTENERS HAVE BEEN REMOVED FOR CLARITY OF ISOMETRIC DETAIL.

WALL TO SOFFIT DETAIL

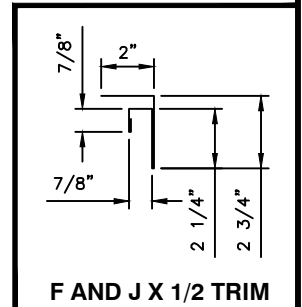
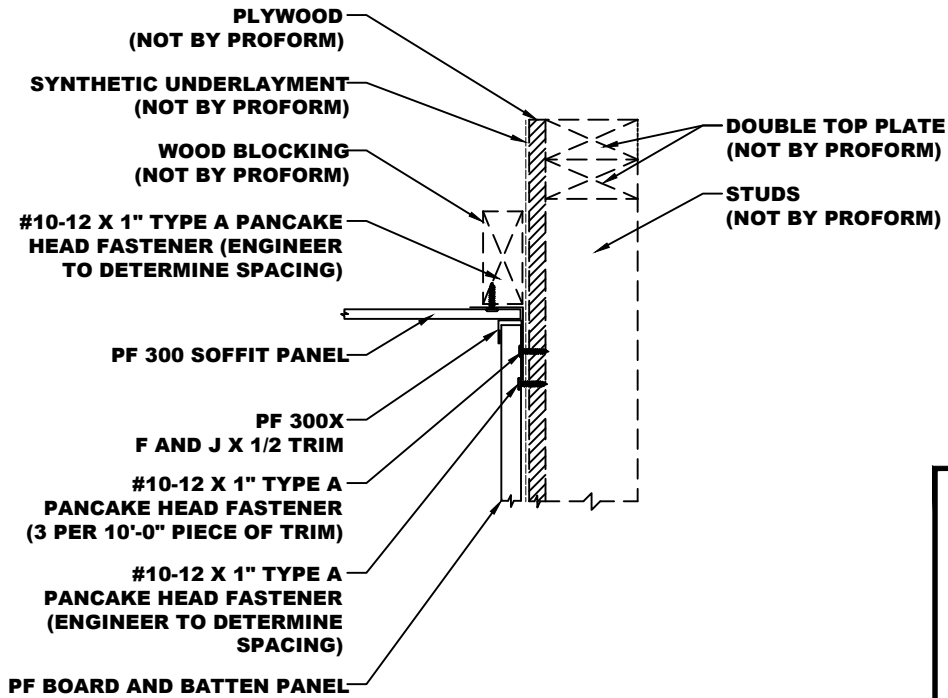


- NOTES:**
1. Head/Jamb Trim to run from edge of wall to edge of wall.
 2. Attach Head/Jamb Trim with #10-12 x 1" Type A Pancake Head Fasteners at (3) per 10'-0" piece of trim.
 3. Install PF Board and Batten Panels using #10-12 x 1" Type A Pancake Head Fasteners at a spacing determined by your Project Engineer.

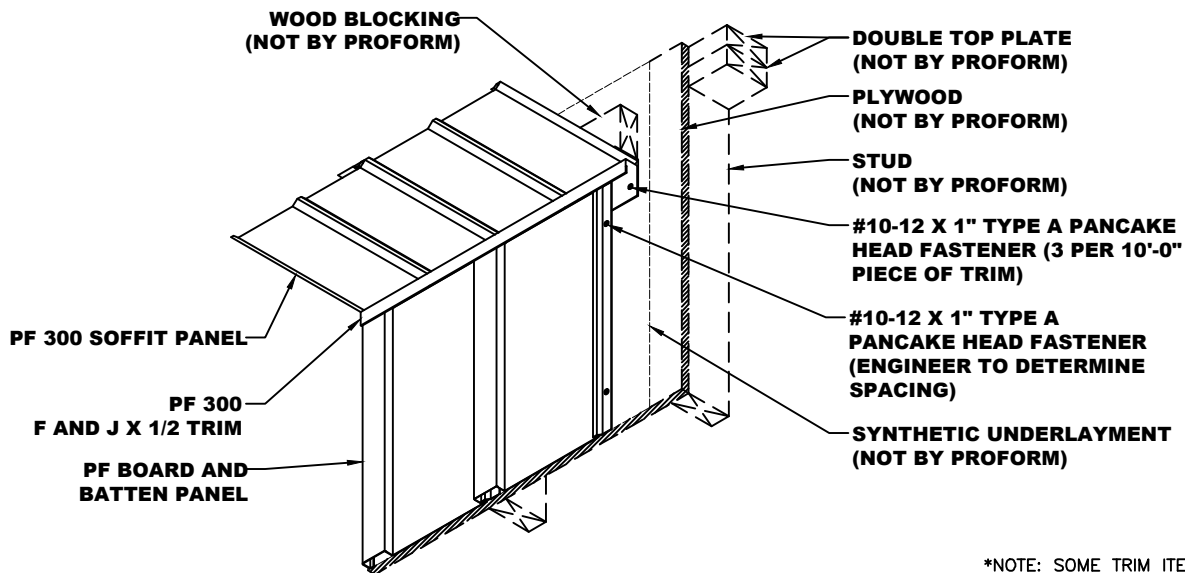
*NOTE: SOME TRIM ITEMS AND FASTENERS HAVE BEEN REMOVED FOR CLARITY OF ISOMETRIC DETAIL.



WALL TO SOFFIT (ALT.) DETAIL

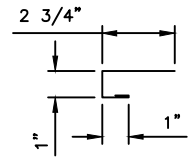
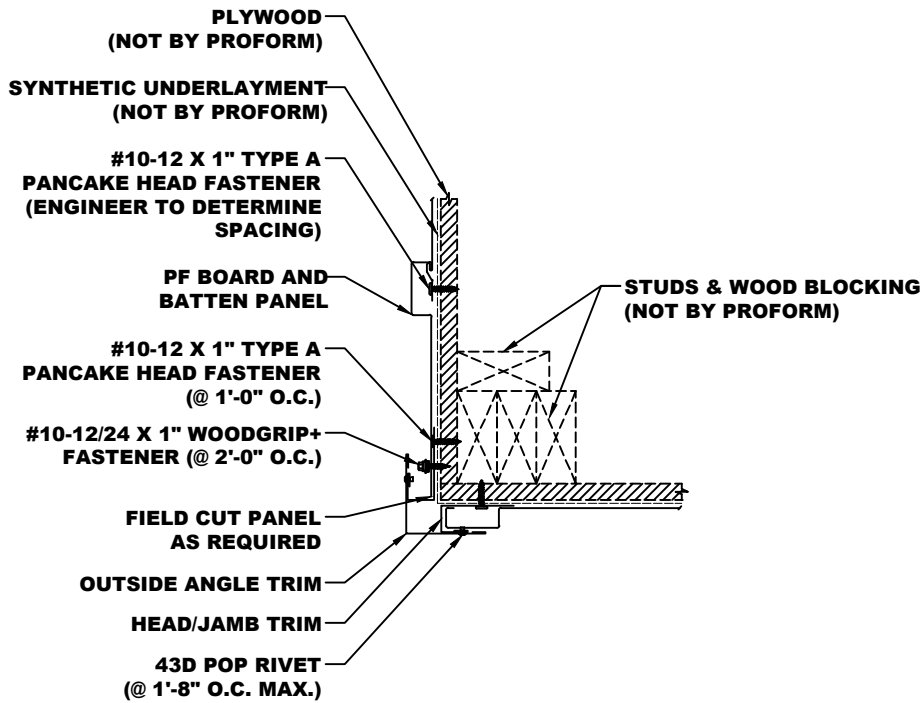


- NOTES:**
1. PF 300 x F and J x 1/2 Trim to run from edge of wall to edge of wall.
 2. Attach PF 300 F and J x 1/2 Trim with #10-12 x 1" Type A Pancake Head Fasteners at (3) per 10'-0" piece of trim.
 3. Install PF Board and Batten Panels using #10-12 x 1" Type A Pancake Head Fasteners at a spacing determined by your Project Engineer.

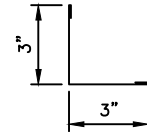


*NOTE: SOME TRIM ITEMS AND FASTENERS HAVE BEEN REMOVED FOR CLARITY OF ISOMETRIC DETAIL.

OUTSIDE CORNER DETAIL

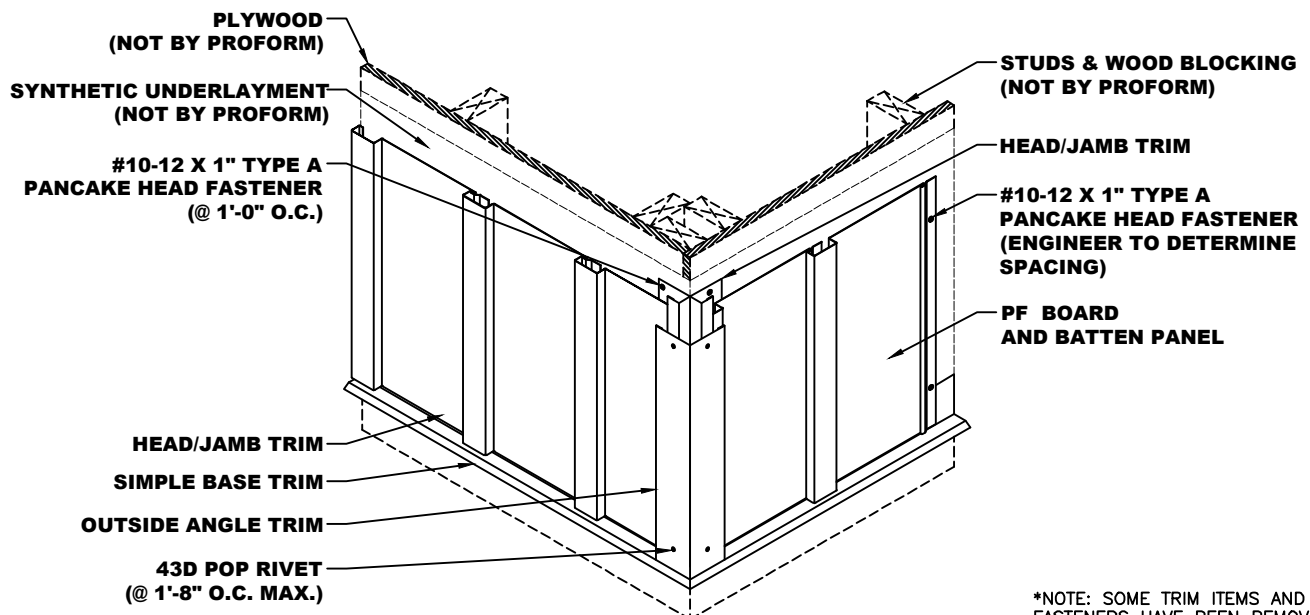


HEAD/JAMB TRIM



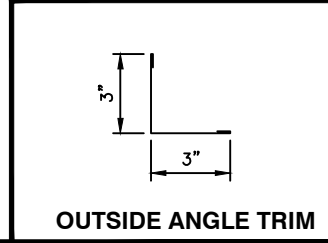
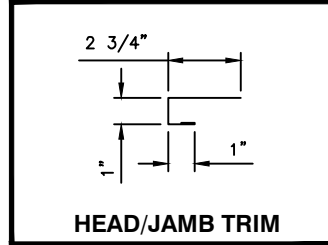
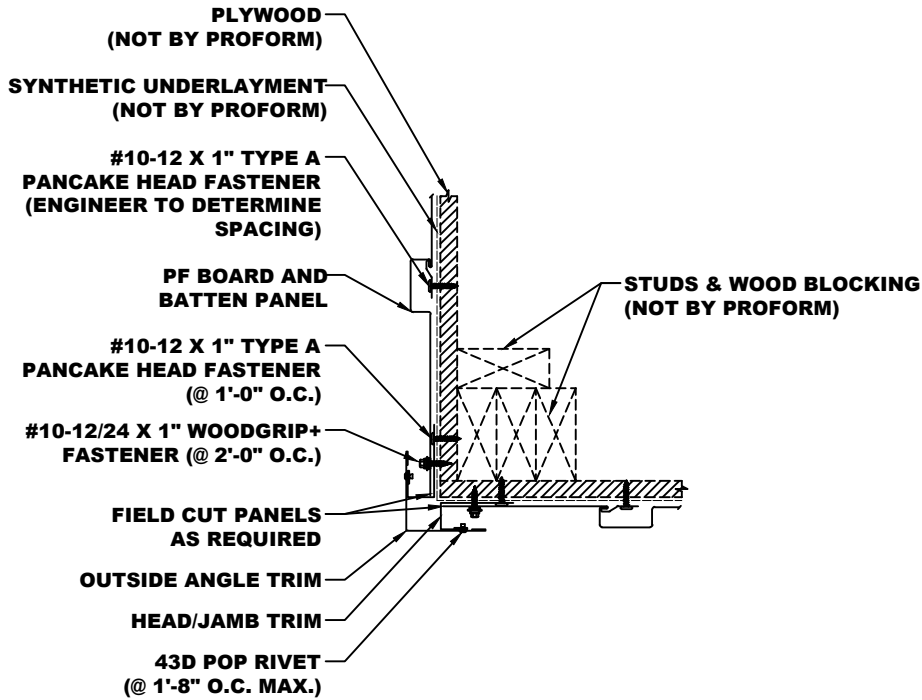
OUTSIDE ANGLE TRIM

- NOTES:**
1. Attach Head/Jamb Trim to plywood with #10-12 x 1" Type A Pancake Head Fasteners at 1'-0" O.C.
 2. Field cut PF Board and Batten Panel as required and fasten with #10-12/24 x 1" Woodgrip+ Fasteners at 2'-0" O.C. On side of Corner with full panel, attach with #10-12 x 1" Type A Pancake Head Fasteners at spacing determined by Engineer of Record.
 3. Attach Outside Angle Trim to Head/Jamb Trim with 43D Pop Rivets at 1'-8" Max. O.C. spacing. Trim Laps are to be 2" Laps.

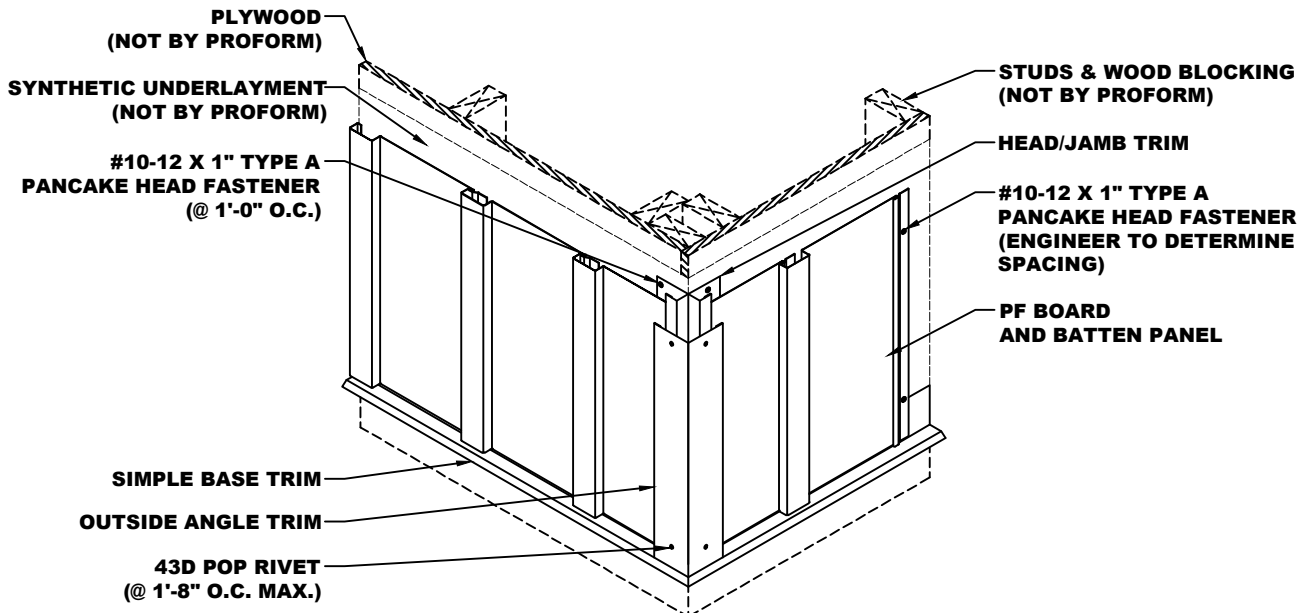


*NOTE: SOME TRIM ITEMS AND FASTENERS HAVE BEEN REMOVED FOR CLARITY OF ISOMETRIC DETAIL.

OUTSIDE CORNER(OFF MODULE) DETAIL

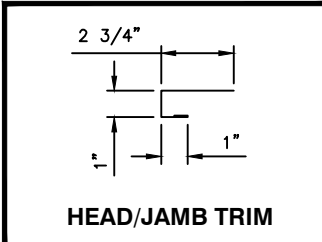
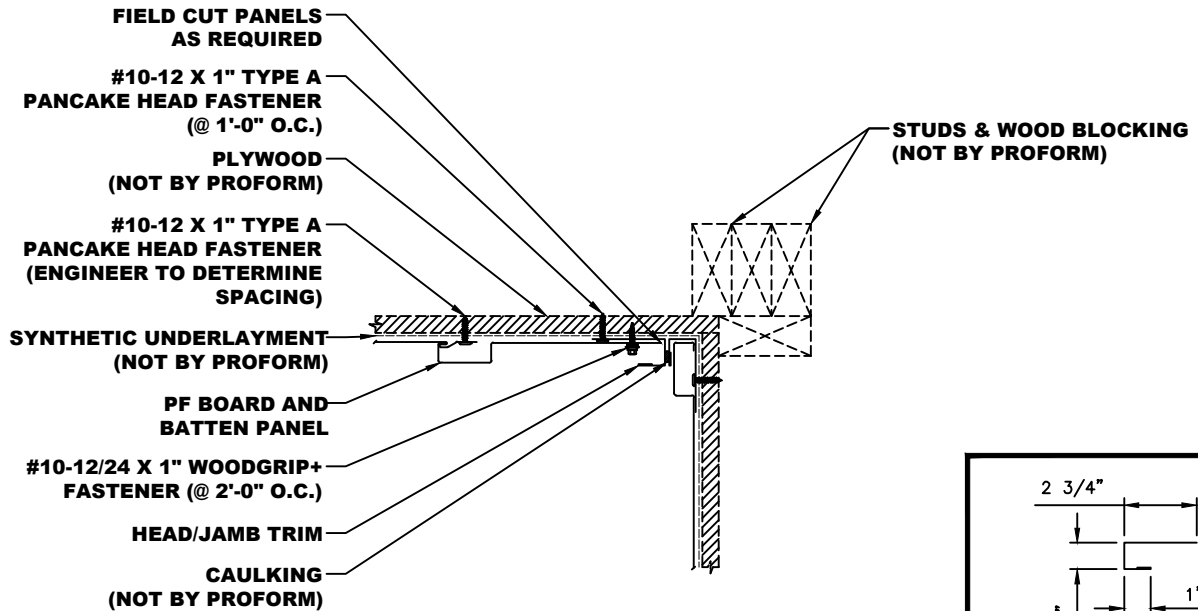


- NOTES:**
1. Attach Head/Jamb Trim to plywood with #10-12 x 1" Type A Pancake Head Fasteners at 1'-0" O.C.
 2. Field cut PF Board and Batten Panels as required and fasten with #10-12/24 x 1" Woodgrip+ Fasteners at 2'-0" O.C.
 3. Attach Outside Angle Trim to Head/Jamb Trim with 43D Pop Rivets at 1'-8" Max. O.C. spacing. Trim Laps are to be 2" Laps.



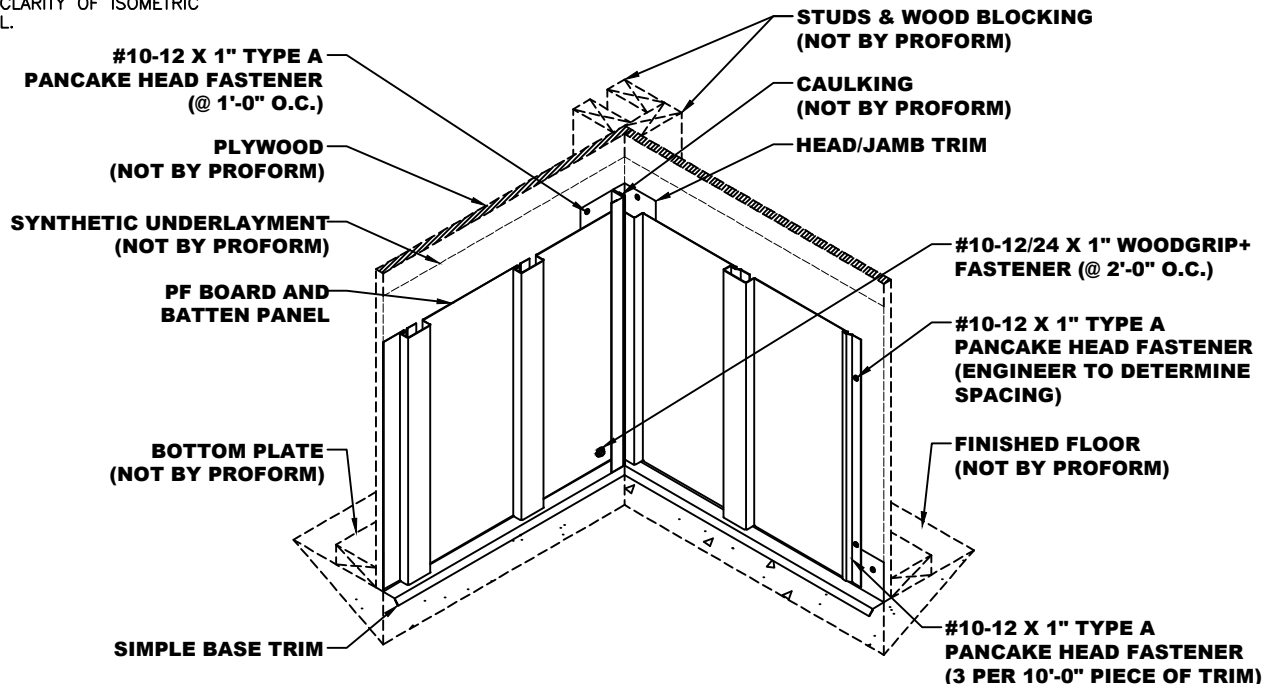
*NOTE: SOME TRIM ITEMS AND FASTENERS HAVE BEEN REMOVED FOR CLARITY OF ISOMETRIC DETAIL.

INSIDE CORNER DETAIL

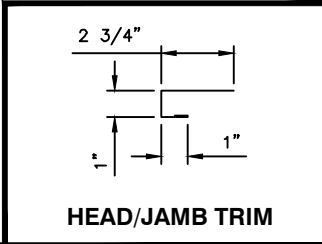
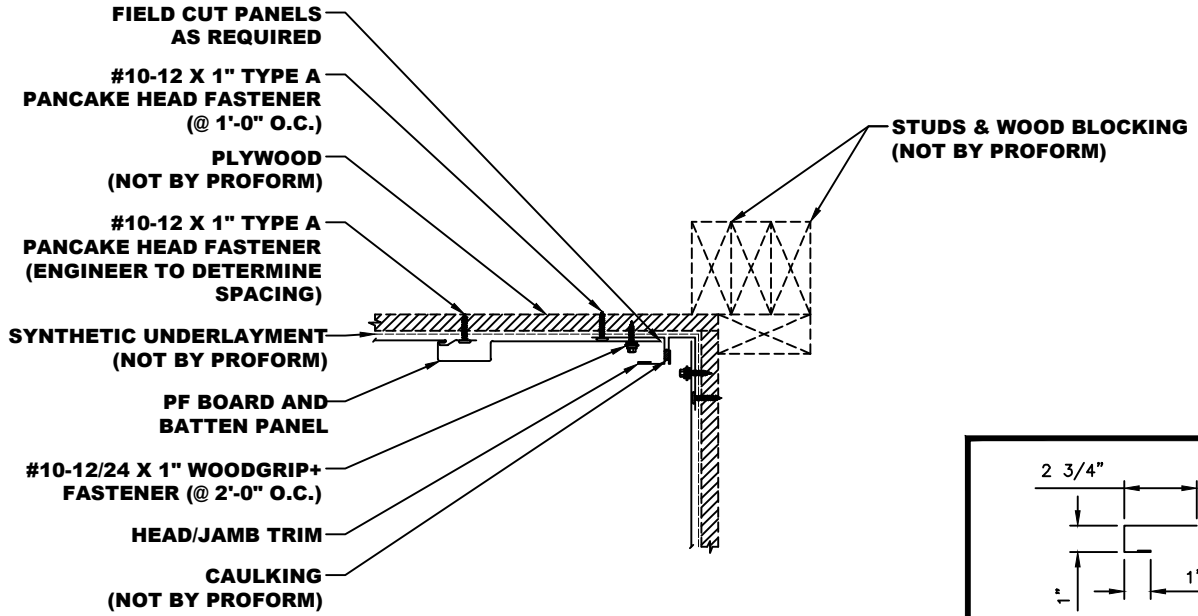


- NOTES:**
1. Attach Head/Jamb Trim to plywood with #10-12 x 1" Type A Pancake Head Fasteners at 1'-0" O.C. Apply a bead of color matched Titebond Tube Sealant between Head/Jamb Trims as shown in detail.
 2. Field cut PF Board and Batten Panel as required and fasten with #10-12/24 x 1" Woodgrip+ Fasteners at 2'-0" O.C. On side of Corner with full panel, attach with #10-12 x 1" Type A Pancake Head Fasteners at spacing determined by Engineer of Record.
 3. Attach Inside Corner Trim to Head/Jamb Trim with 43D Pop Rivets at 1'-8" Max. O.C. spacing. Trim Laps are to be 2" Laps.

*NOTE: SOME TRIM ITEMS AND FASTENERS HAVE BEEN REMOVED FOR CLARITY OF ISOMETRIC DETAIL.

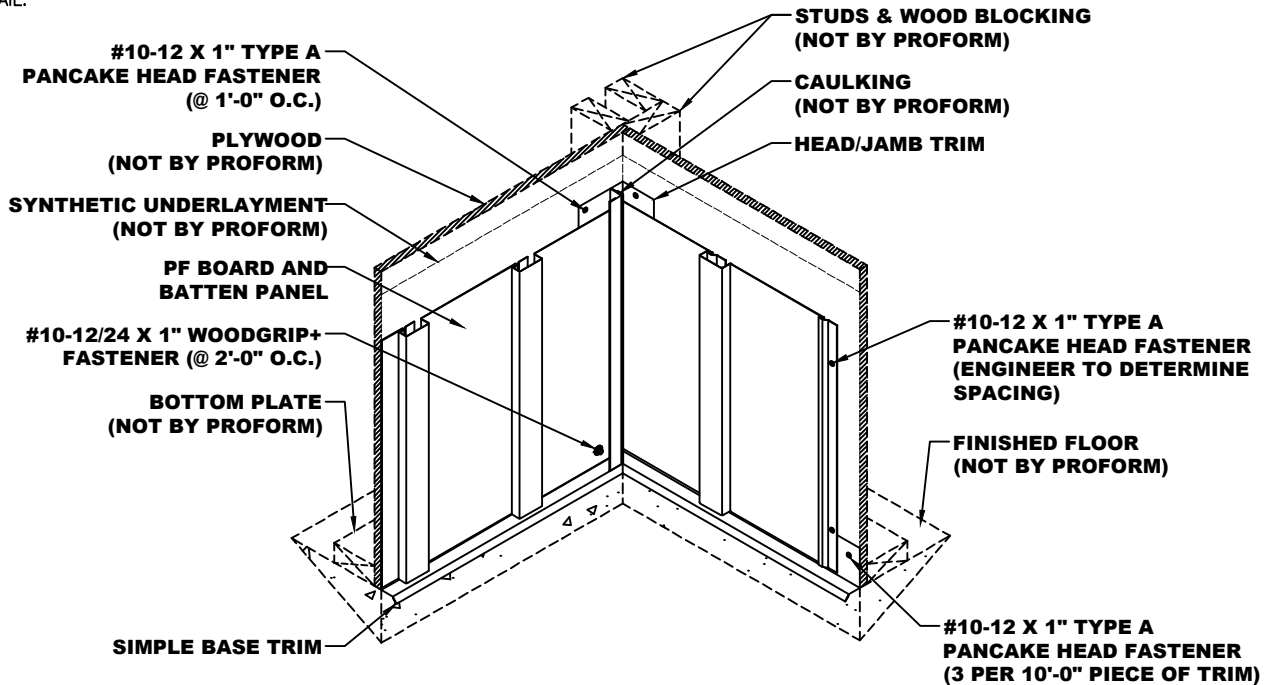


INSIDE CORNER (OFF MODULE) DETAIL

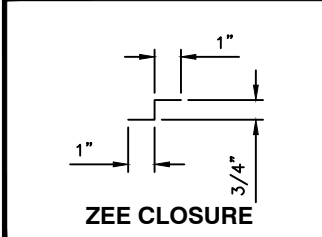
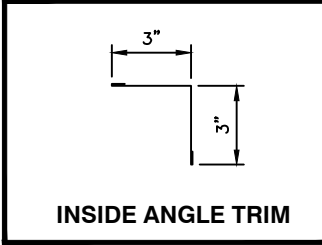
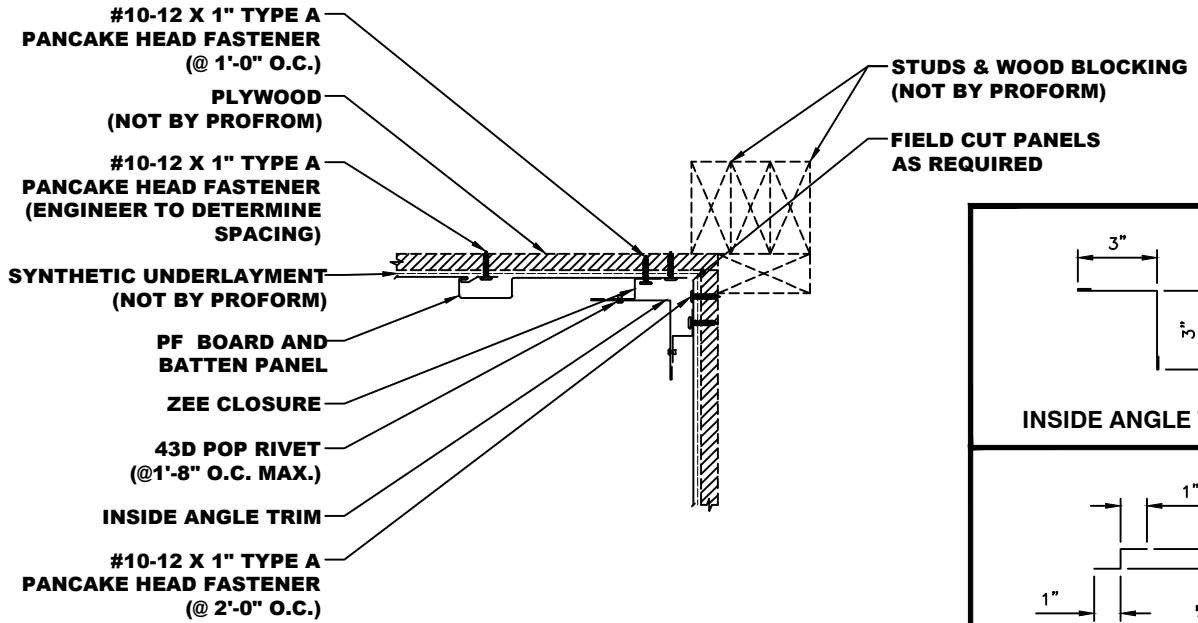


- NOTES:**
1. Attach Head/Jamb Trim to plywood with #10-12 x 1" Type A Pancake Head Fasteners at 1'-0" O.C. Apply a bead of color matched Titebond Tube Sealant between Head/Jamb Trims as shown in detail.
 2. Field cut PF Board and Batten Panels as required and fasten with #10-12/24 x 1" Woodgrip+ Fasteners at 2'-0" O.C.
 3. Attach Inside Corner Trim to Head/Jamb Trim with 43D Pop Rivets at 1'-8" Max. O.C. spacing. Trim Laps are to be 2" Laps.

*NOTE: SOME TRIM ITEMS AND FASTENERS HAVE BEEN REMOVED FOR CLARITY OF ISOMETRIC DETAIL.

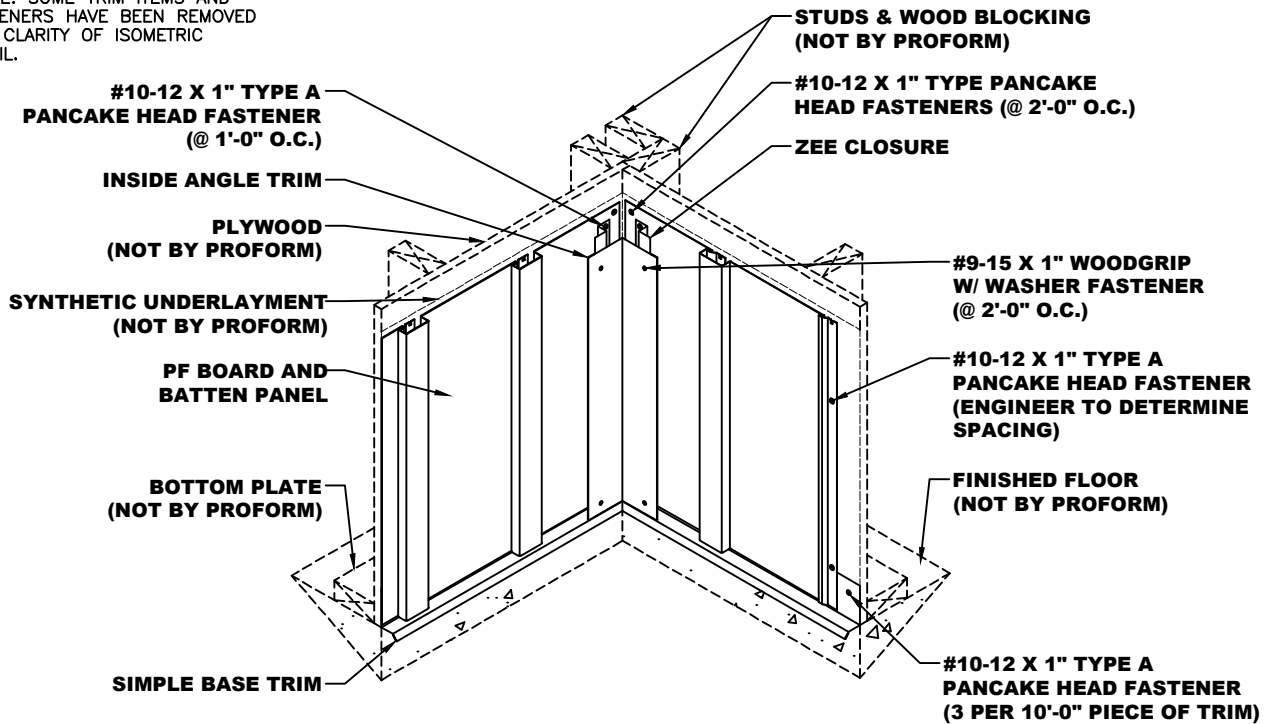


INSIDE CORNER (ALT.) DETAIL

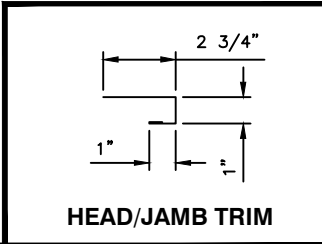
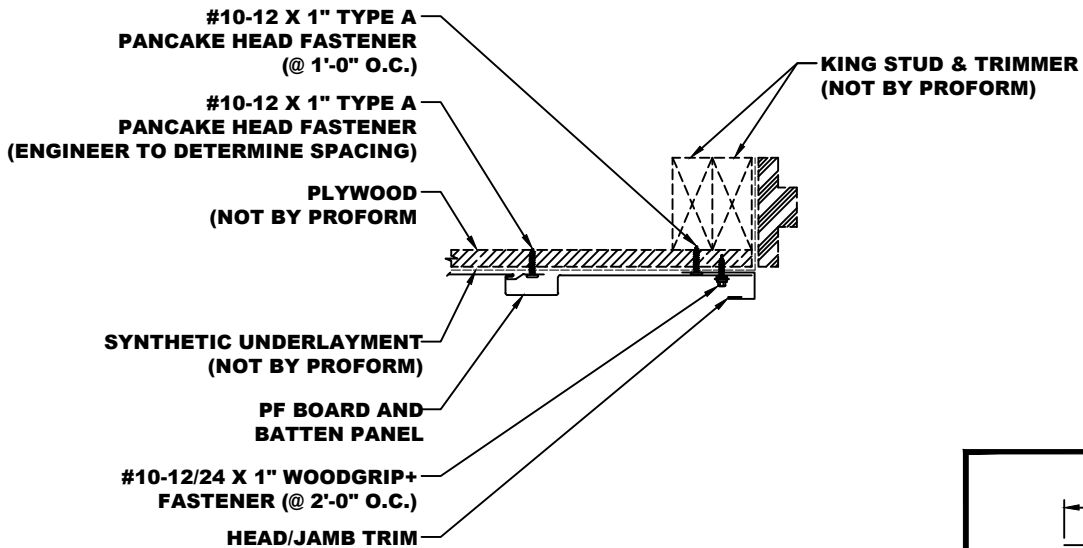


- NOTES:**
1. Field cut PF Board and Batten Panels as required and fasten with #10-12 x 1" Type A Pancake Head Fasteners at 2'-0" O.C.
 2. Install Zee Closure overtop of panels and attach with #10-12 x 1" Type A Pancake Head Fasteners at 1'-0" O.C.
 3. Attach Inside Angle Trim to Zee Closure with 43D Pop Rivets at 1'-8" Max. O.C. spacing. Trim Laps are to be 2" Laps.

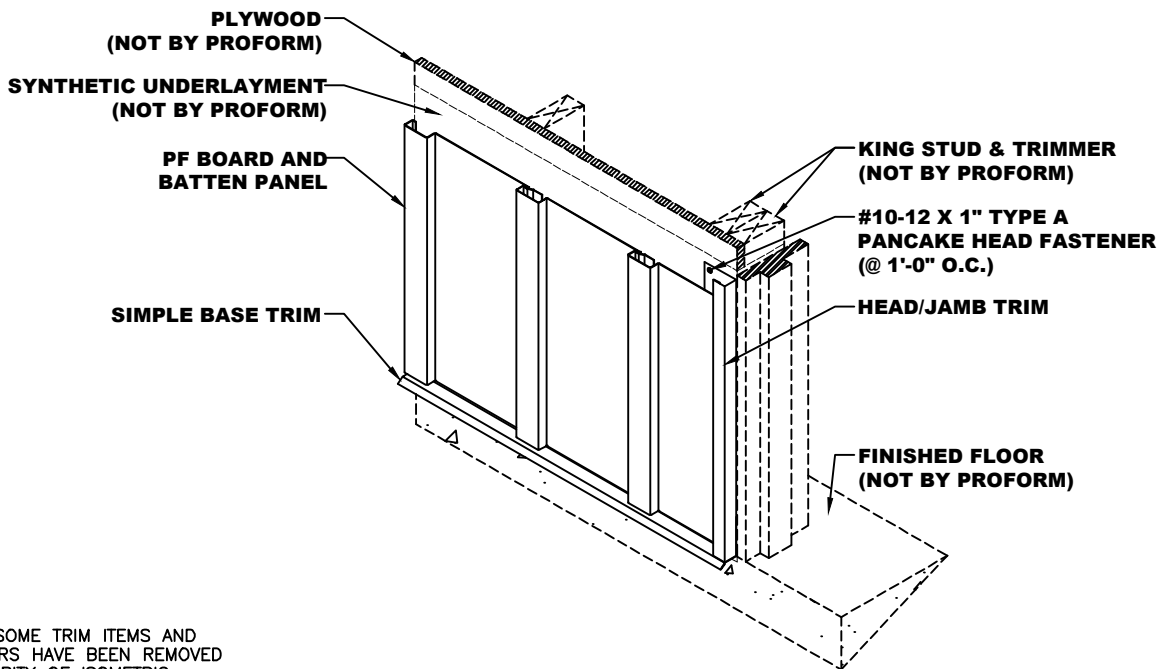
*NOTE: SOME TRIM ITEMS AND FASTENERS HAVE BEEN REMOVED FOR CLARITY OF ISOMETRIC DETAIL.



JAMB TRIM DETAIL

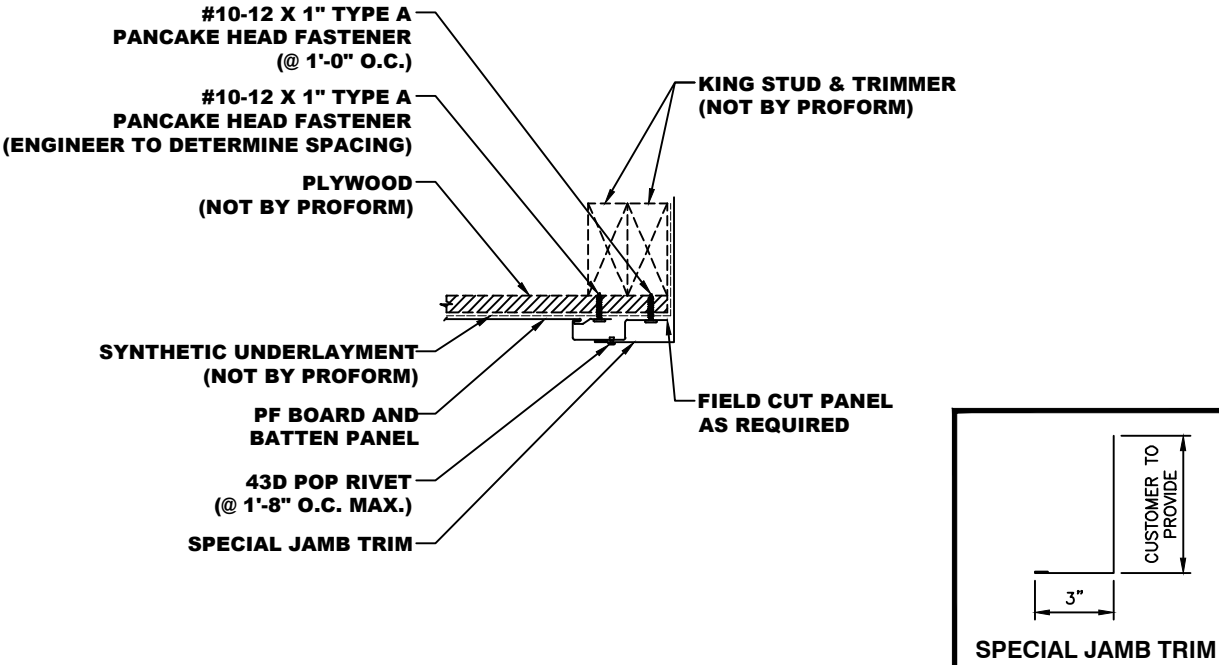


- NOTES:**
1. Attach Head/Jamb Trim to plywood with #10-12 x 1" Type A Pancake Head Fasteners at 1'-0" O.C.
 2. Field cut PF Board and Batten Panel as required and fasten with #10-12/24 x 1" Woodgrip+ Fasteners at 2'-0" O.C.

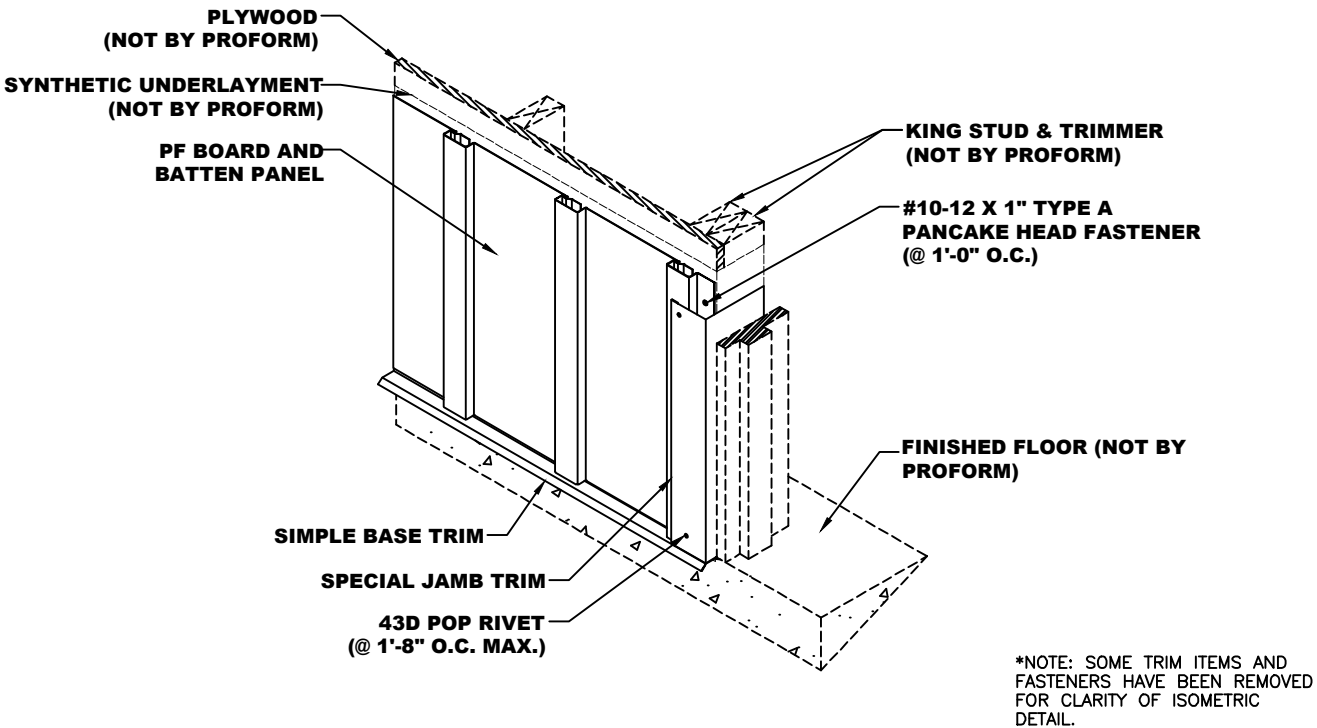


*NOTE: SOME TRIM ITEMS AND FASTENERS HAVE BEEN REMOVED FOR CLARITY OF ISOMETRIC DETAIL.

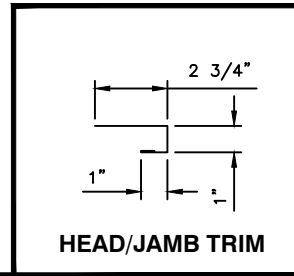
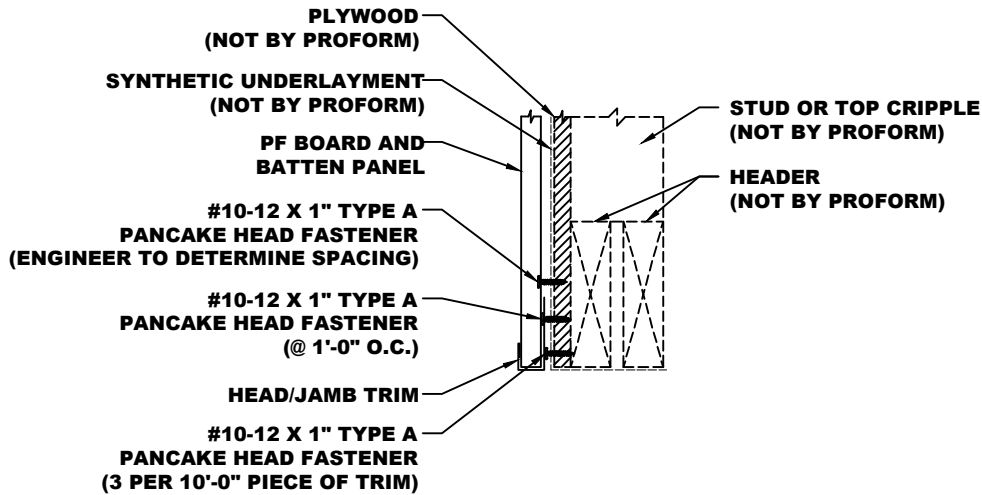
JAMB TRIM (ALT. - HIGH) DETAIL



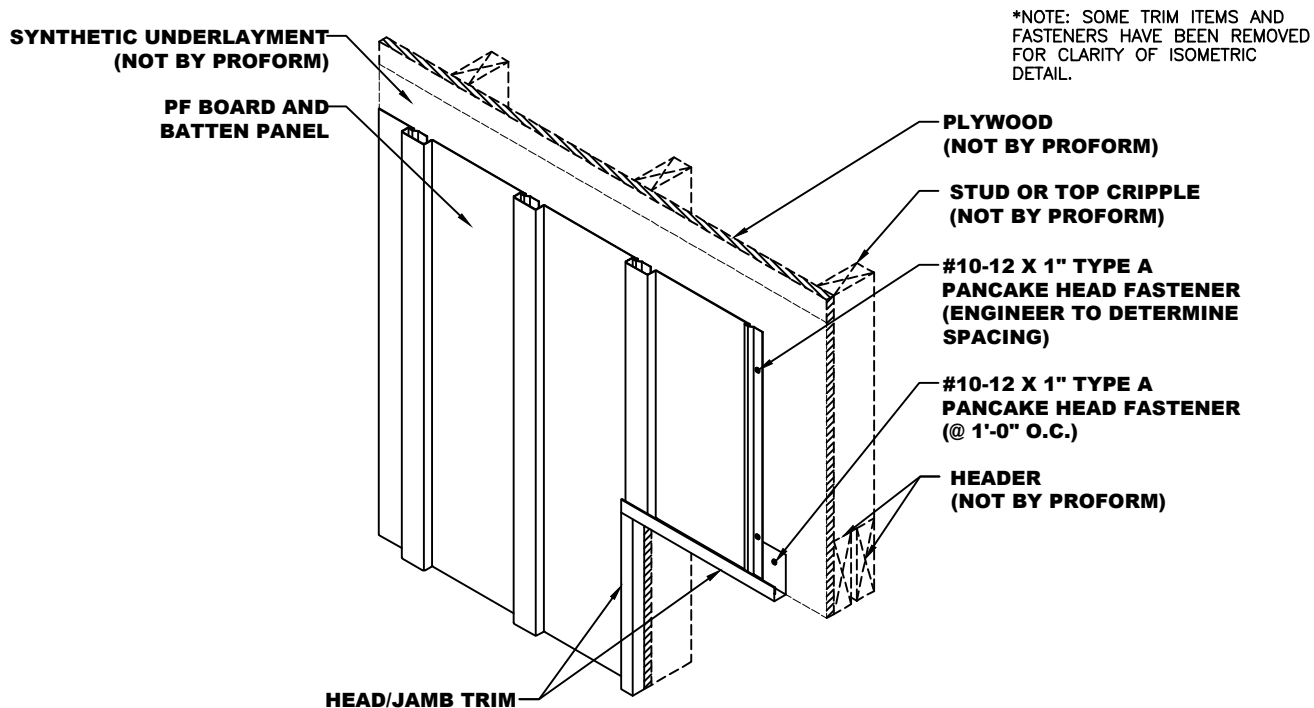
- NOTES:** 1. Field cut PF Board and Batten Panels as required and fasten with #10-12 x 1" Type A Pancake Head Fasteners at 1'-0" O.C.
2. Attach Special Jamb Trim to batten rib of the Nostalgia Board and Batten Panel with 43D Pop Rivets at 1'-8" O.C. Max. spacing. Trim Laps are to be 2" Laps.



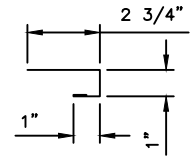
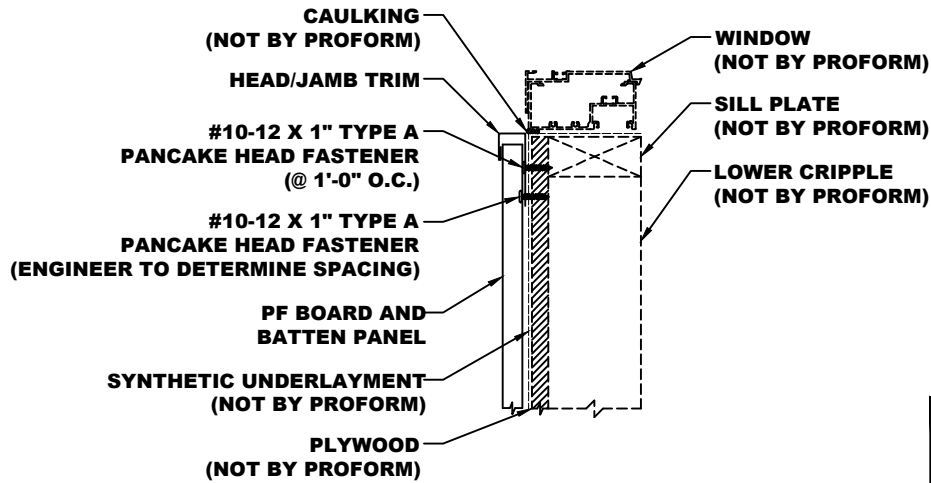
HEADER DETAIL



- NOTES:**
1. Head/Jamb Trim to run from edge of opening to edge of opening plus 2".
 2. Attach Head/Jamb Trim to plywood with #10-12 x 1" Type A Pancake Head Fasteners at 1'-0" O.C.
 3. Field cut PF Board and Batten Panel as required and fasten with #10-12 x 1" Type A Pancake Head Fasteners at Engineered Spacing.

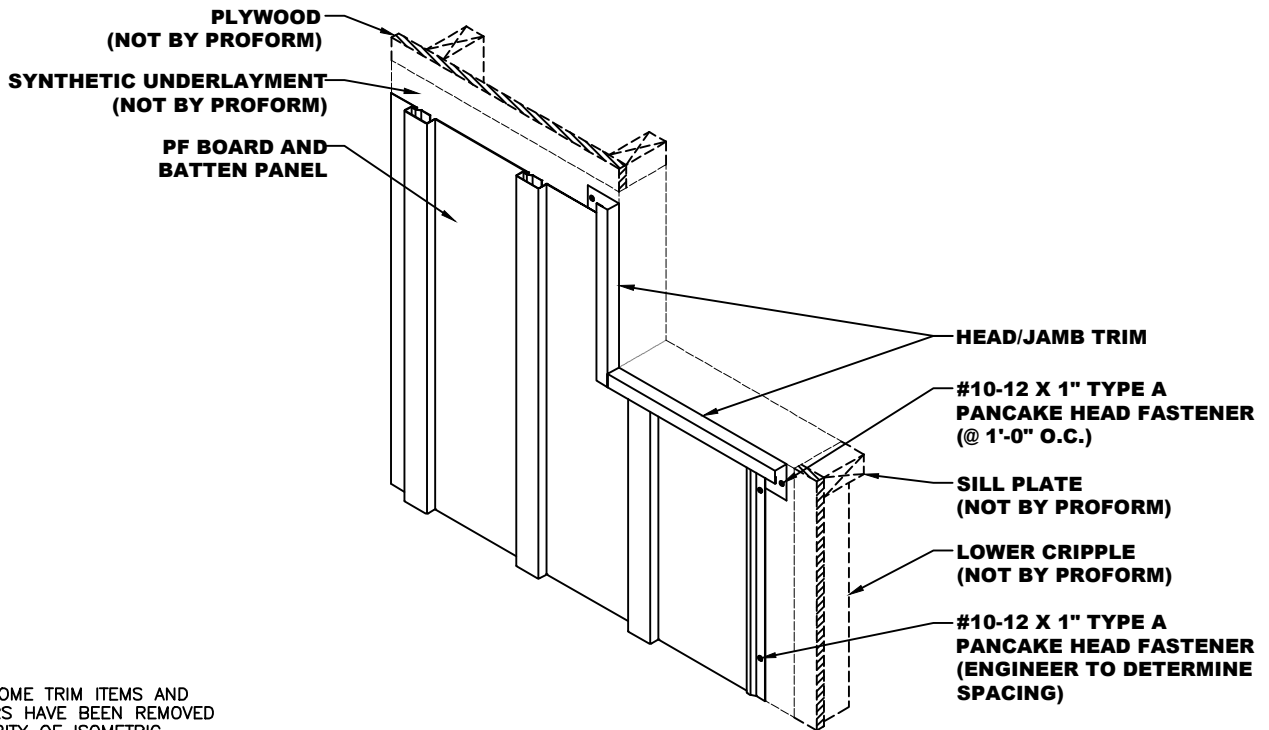


SILL DETAIL



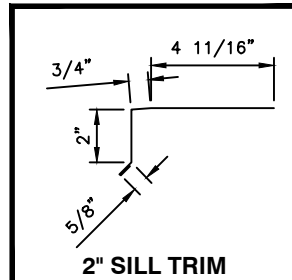
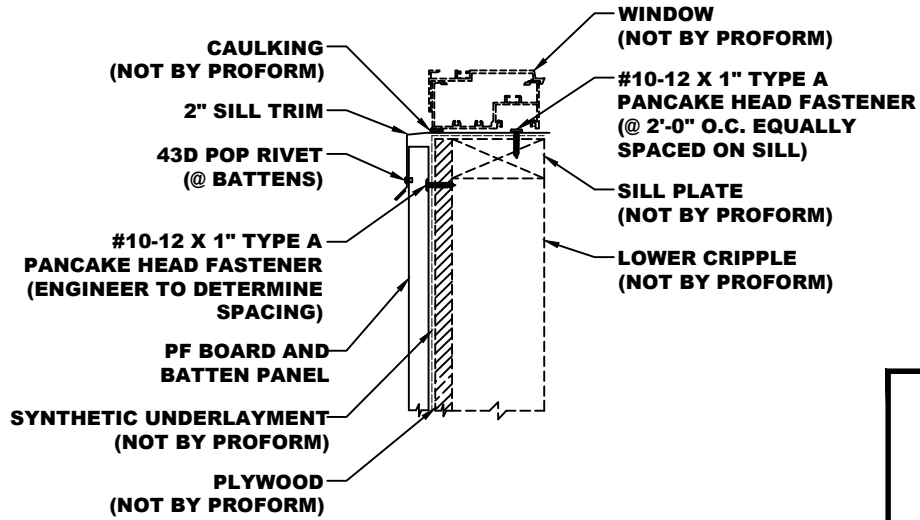
HEAD/JAMB TRIM

- NOTES:**
1. Head/Jamb Trim to run from edge of opening to edge of opening.
 2. Attach Head/Jamb Trim to plywood with #10-12 x 1" Type A Pancake Head Fasteners at 1'-0" O.C.
 3. Field cut PF Board and Batten Panel as required and fasten with #10-12 x 1" Type A Pancake Head Fasteners at Engineered Spacing.

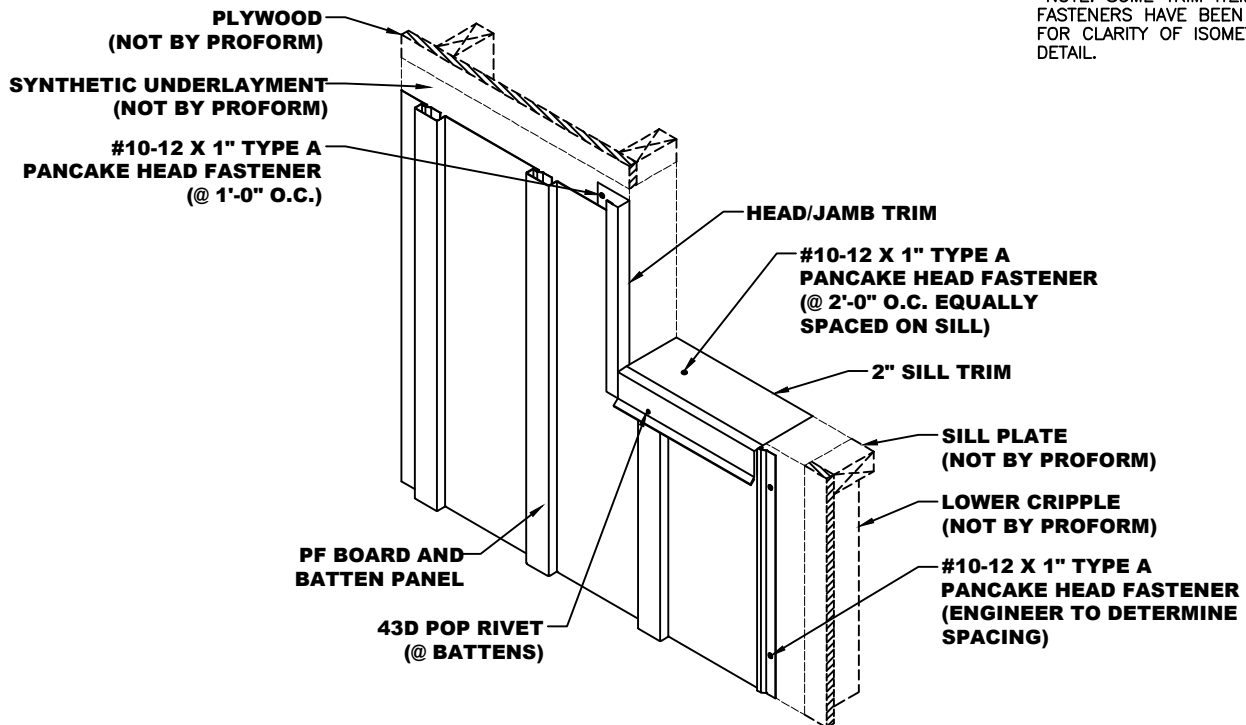


*NOTE: SOME TRIM ITEMS AND FASTENERS HAVE BEEN REMOVED FOR CLARITY OF ISOMETRIC DETAIL.

SILL (ALT.) DETAIL

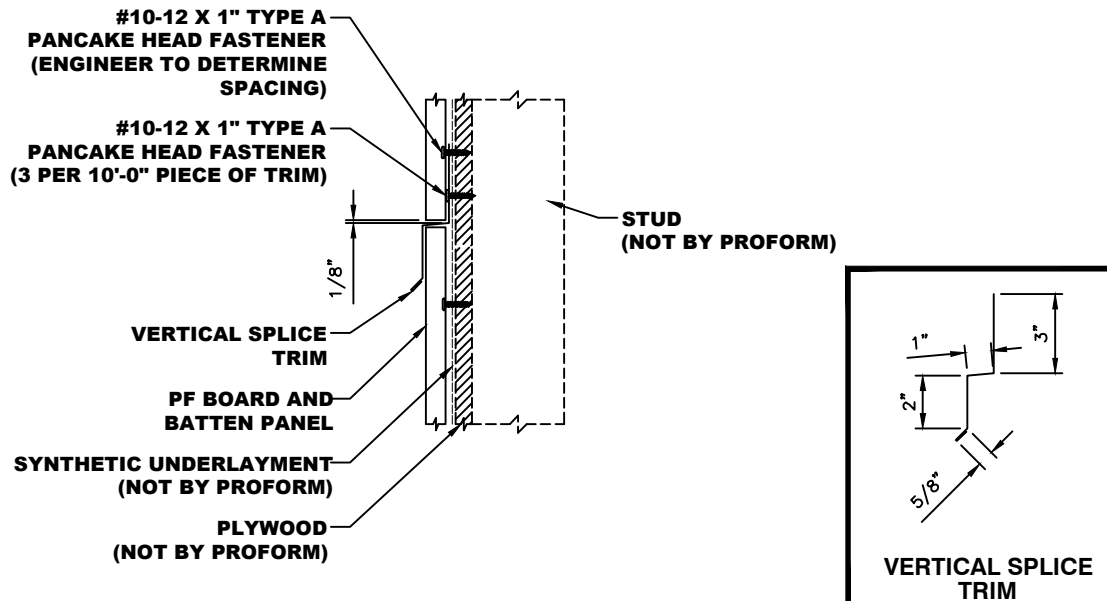


- NOTES:**
1. 2" Sill Trim to run from edge of opening to edge of opening.
 2. Attach 2" Sill Trim to sill plate with #10-12 x 1" Type A Pancake Head Fasteners at 2'-0" O.C.
 3. Field cut PF Board and Batten Panel as required and fasten with #10-12 x 1" Type A Pancake Head Fasteners at Engineered Spacing.
 4. Attach 2" Sill Trim to batten rib of the Nostalgia Board and Batten Panel with 43D Pop Rivets at each Batten Rib.

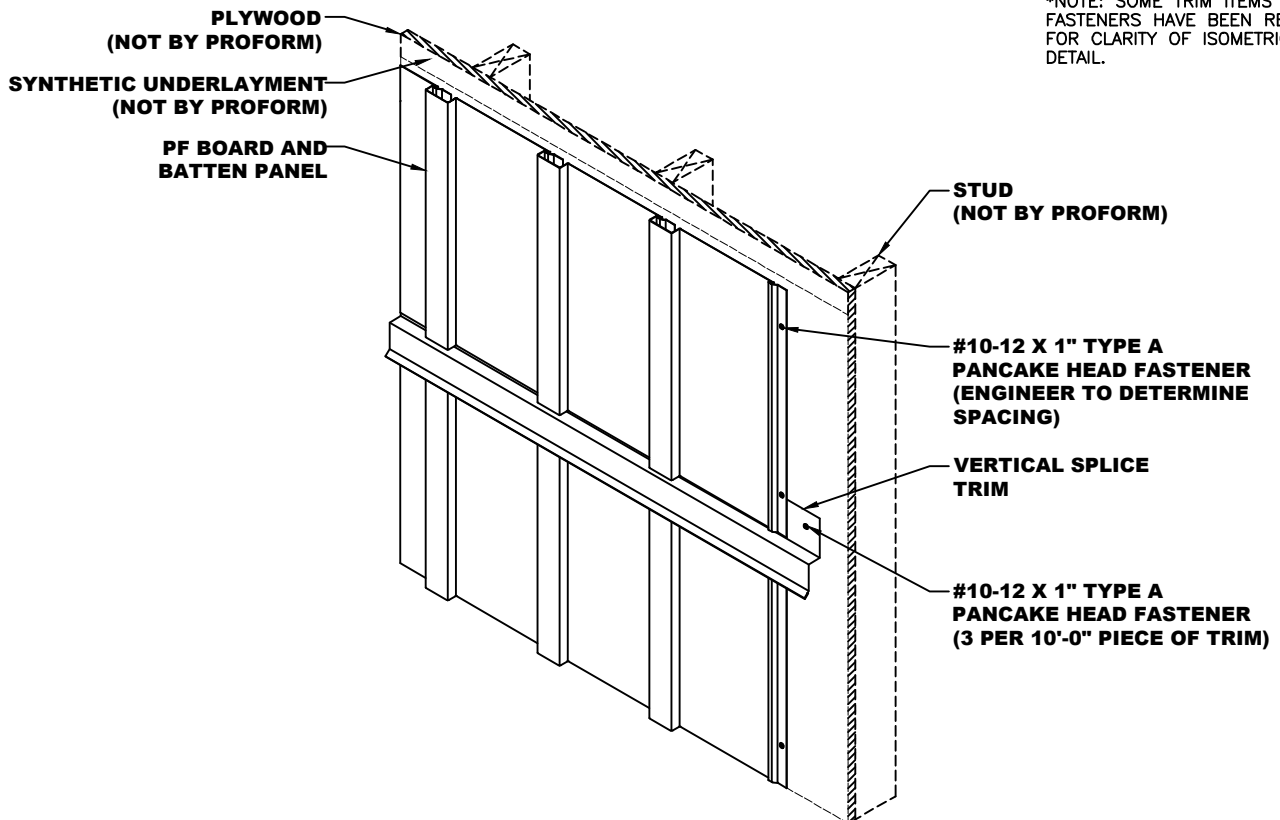


*NOTE: SOME TRIM ITEMS AND FASTENERS HAVE BEEN REMOVED FOR CLARITY OF ISOMETRIC DETAIL.

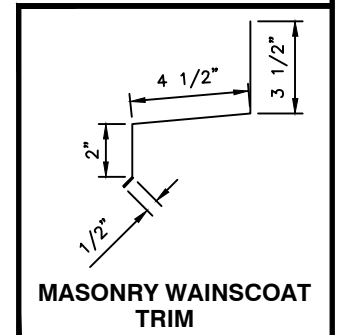
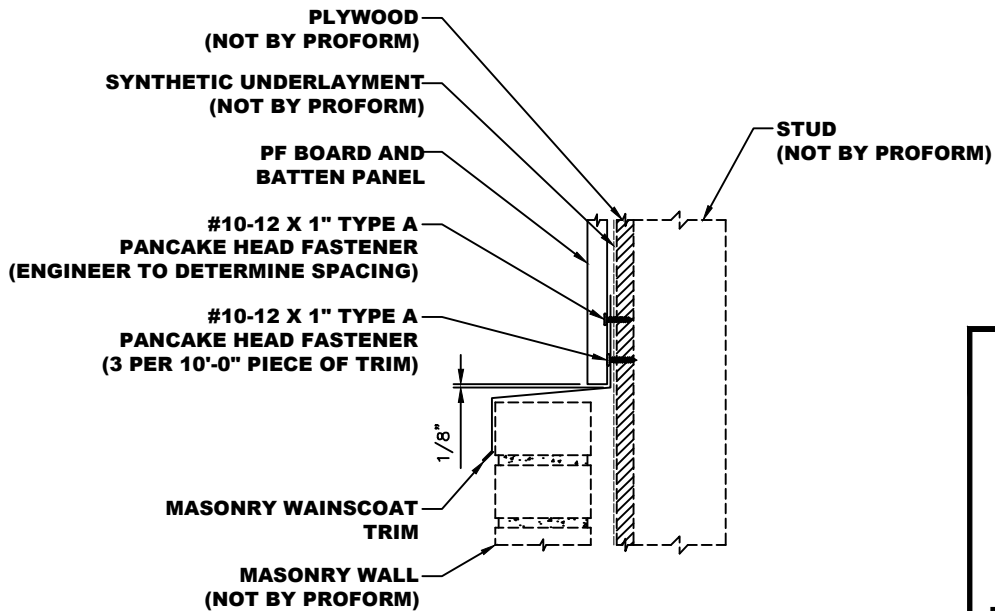
SPLICE DETAIL



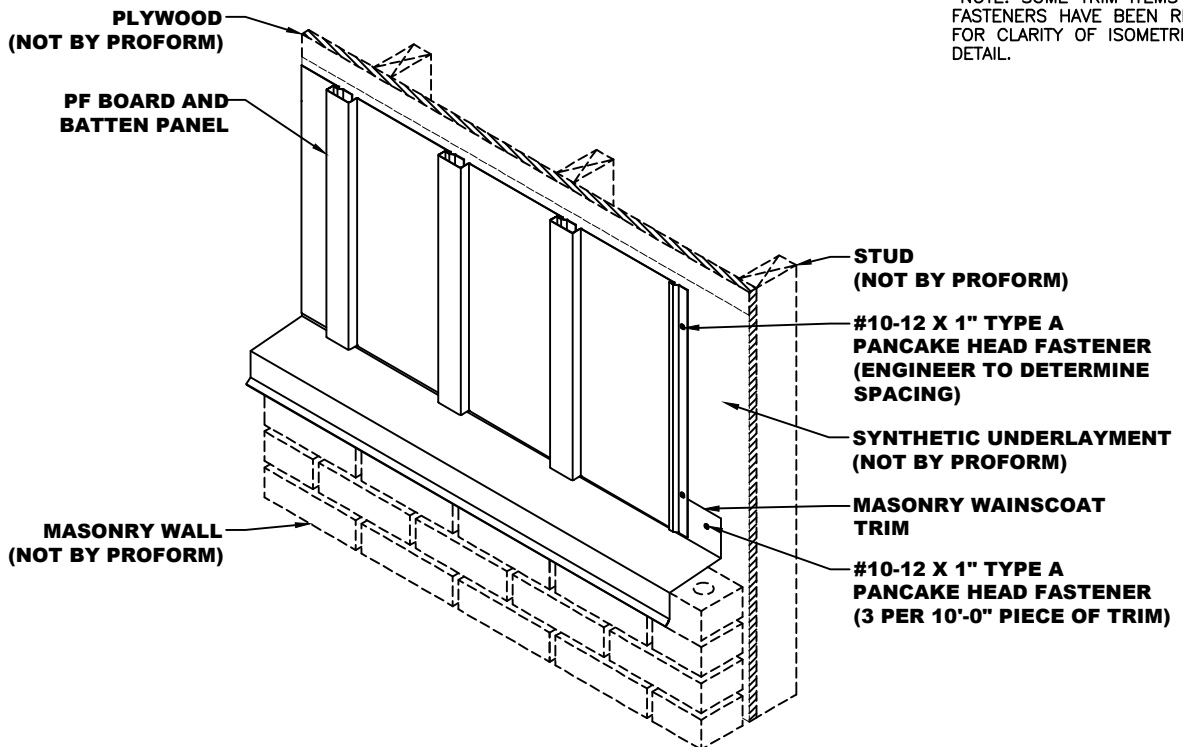
- NOTES:** 1. Install the lower PF Board and Batten Panel as shown.
 2. Install Vertical Splice Trim to plywood with #10-12 x 1" Type A Pancake Head Fasteners at (3) per 10'-0" piece of trim.
 3. Install the upper Nostalgia Board and Batten Panel as shown.



MASONRY WAINSCOAT DETAIL

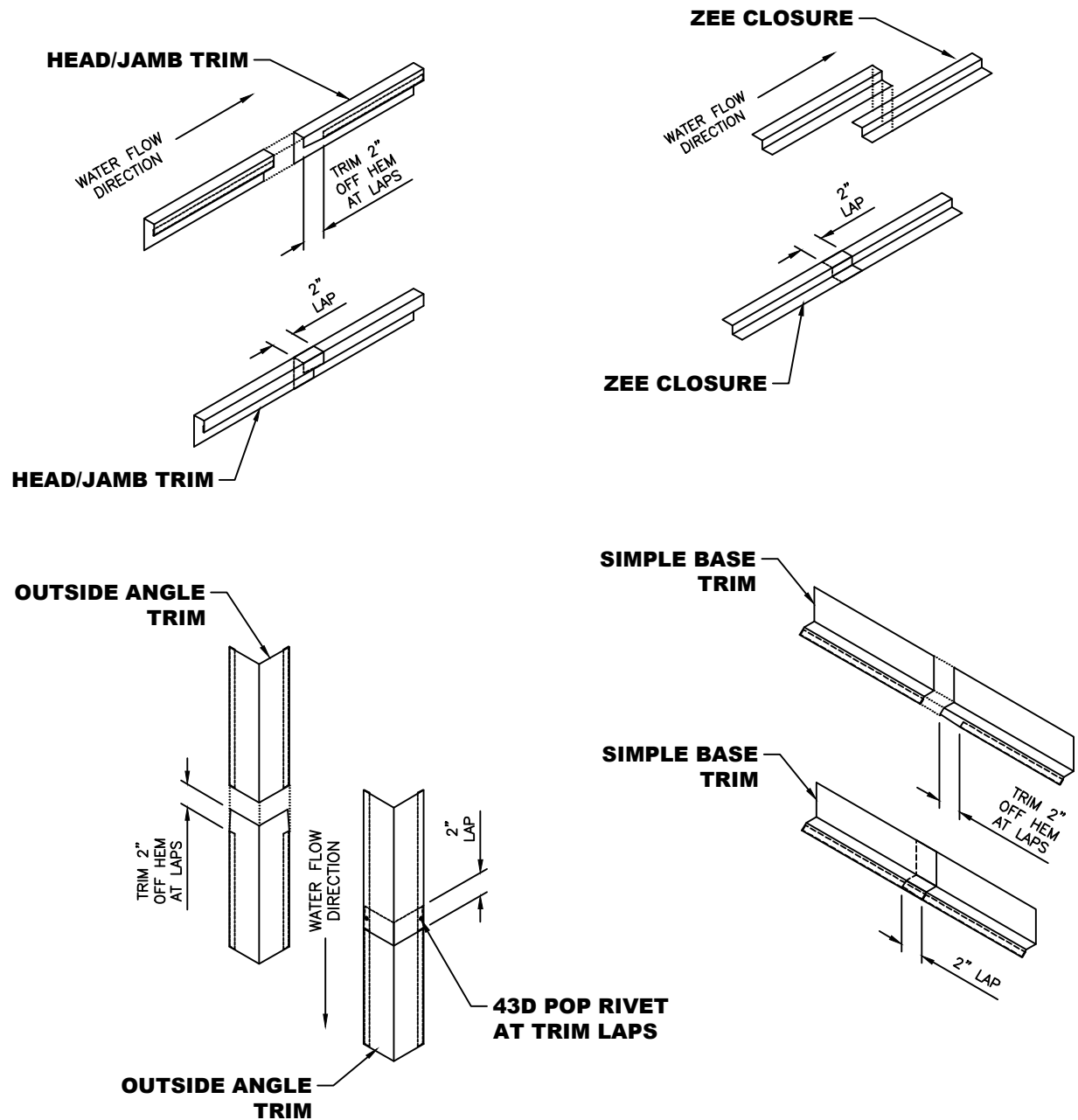


- NOTES:**
1. Set Masonry Wainscoat Trim in place with Brick Veneer edge.
 2. Attach Masonry Wainscoat Trim to plywood with #10-12 x 1" Type A Pancake Head Fasteners at (3) per 10'-0" piece of trim.
 3. Install PF Board and Batten Panel as shown.



*NOTE: SOME TRIM ITEMS AND FASTENERS HAVE BEEN REMOVED FOR CLARITY OF ISOMETRIC DETAIL.

TYPICAL TRIM LAP DETAILS



NOTE: 1. Apply specified Roll Tape Sealant or a 3/16" Ø bead of Tube Butyl 1 1/2" back from the edge of the trim. Also, apply a piece of tape sealant or bead of Tube Butyl as a Pigtail to completely seal joint.
 2. Notch the hems on the upper trim piece 2" so that the trim will fit flat in the lap joint.
 3. Secure trim laps with Pop Rivets as shown above.