

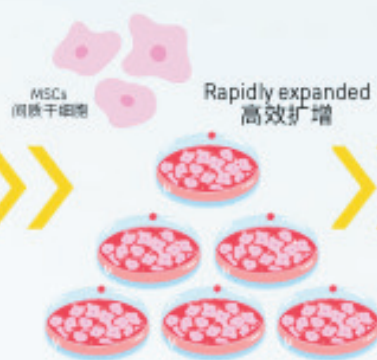
## 🌟 How Are We Different? / 我们有何不同?

### 🌿 Past Storage Model (传统储存方式)

- 🔴 Limited to DNA-matched family members 仅限DNA高度匹配的家庭成员使用
- 🔴 Requires DNA match 使用前需基因配对
- 🔴 May remain unused for decades 储存多年可能用不上
- 🔴 No financial return 无经济回报，仅储存成本

### 🌿 Creation LifePlan (创生计划)

- ✅ Usable by the whole family 全家适用，无需血缘配对
- ✅ No matching needed MSC干细胞无需配对即可使用
- ✅ Immediately usable via regenerative therapies 入会即享疗程，健康立即可见
- ✅ Monthly profit-sharing 加工创造收益，享每月分红



If not compromised, the storage can last decades or longer with no known expiration under ideal cryogenic conditions.

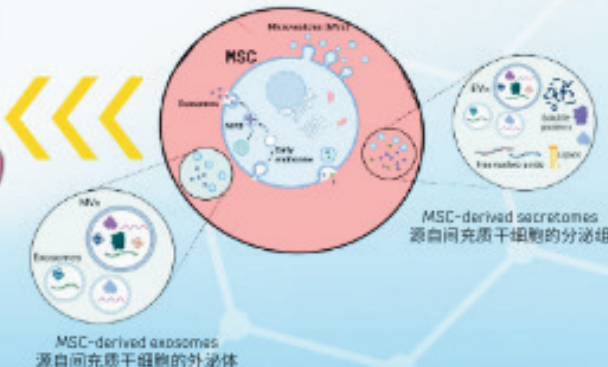
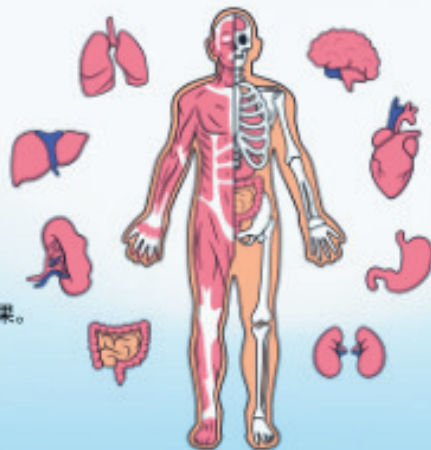
在理想的低温冷冻条件下，如无中断或污染，干细胞可保存数十年甚至更久，目前尚无明确的过期时限。

### MSC-derived exosomes 源自间充质干细胞的外泌体

Promotes repair, reduces inflammation, and supports regeneration — without using live cells.  
促进修复、抗炎、支持再生，无需活细胞。

### MSC-derived secretomes 源自间充质干细胞的分泌组

PA powerful blend of factors that boosts healing, immunity, and anti-aging.  
含多种因子，提升修复力、免疫调节与抗衰老效果。



### 🌿 Join as a Creation LifePlan Member As a member, you will:

- ✅ Receive bioprocessed regenerative products made from umbilical cords  
获得库存：来自脐带生物加工的再生医学产品
- ✅ Sell the products directly or through your network  
自由销售：可自用或转售给客户
- ✅ Earn monthly profit sharing from every sale  
利润共享：每月享有销售分润收益
- ✅ Promote innovative, science-backed wellness solutions  
推广健康：传播科学前沿的再生医学方案

