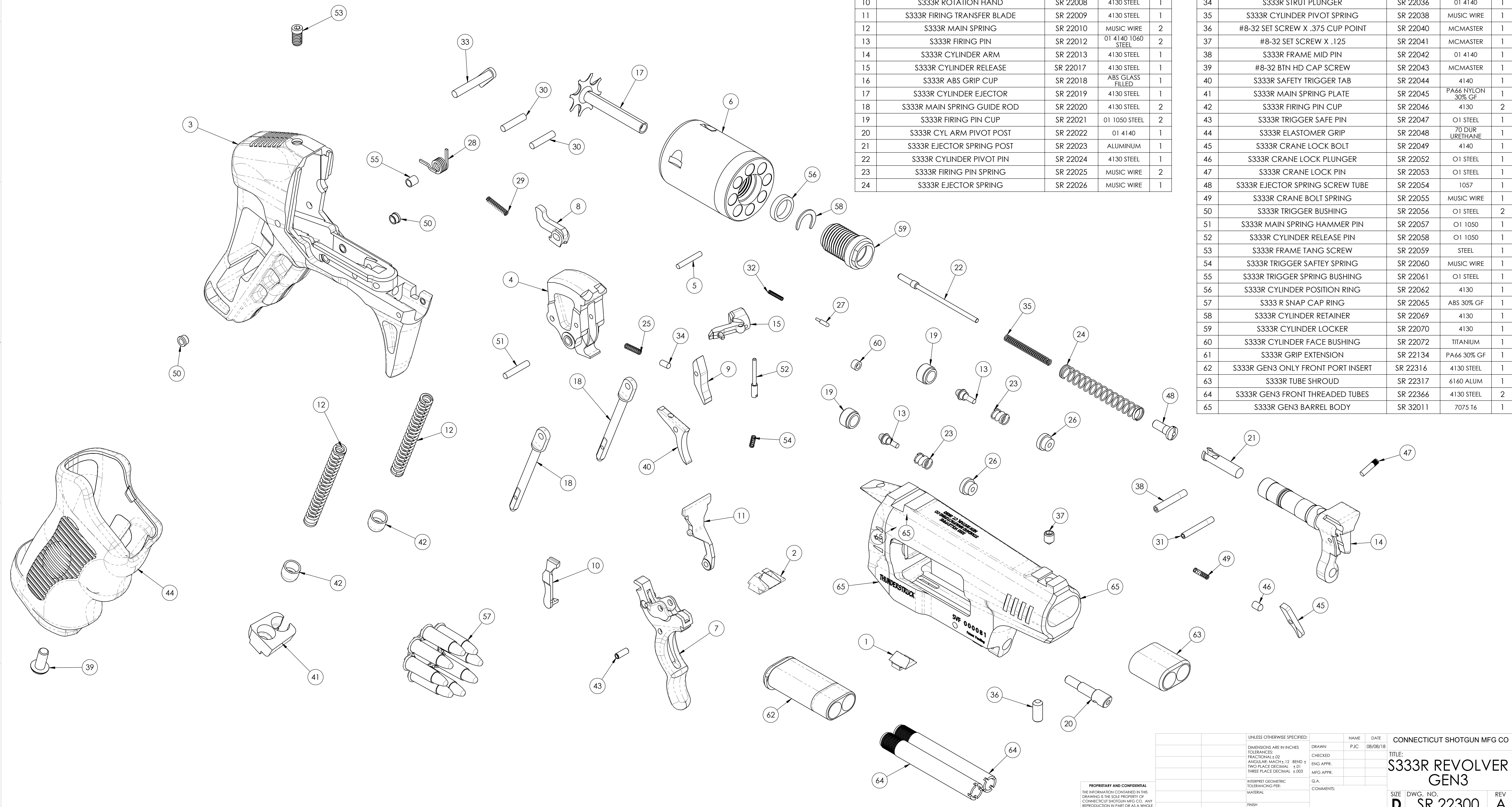


REVISIONS				
ZONE	REV.	DESCRIPTION	DATE	APPROVED

ITEM NO.	DESCRIPTION	PartNo	Material	QTY.
1	STD MFG FRONT SIGHT	S9 A70340	MIM STEEL	1
2	STD MFG REAR SIGHT	S9 A70341		1
3	S333R HAMMER HOUSING	SR 22301	DIE CAST	1
4	S333R HAMMER	SR 22002	4130 STEEL	1
5	S333R HAMMER STRUT PIN	SR 22003	1045 STEEL	1
6	S333R 8 CHAMBER 22LR CYLINDER	SR 22LR004	4130	1
7	S333R TRIGGER	SR 22005	4140 STEEL	1
8	S333R CYLINDER LATCH BOLT	SR 22006	4130 STEEL	1
9	S333R HAMMER STRUT	SR 22007	4130 STEEL	1
10	S333R ROTATION HAND	SR 22008	4130 STEEL	1
11	S333R FIRING TRANSFER BLADE	SR 22009	4130 STEEL	1
12	S333R MAIN SPRING	SR 22010	MUSIC WIRE	2
13	S333R FIRING PIN	SR 22012	01 4140 1060 STEEL	2
14	S333R CYLINDER ARM	SR 22013	4130 STEEL	1
15	S333R CYLINDER RELEASE	SR 22017	4130 STEEL	1
16	S333R ABS GRIP CUP	SR 22018	ABS GLASS FILLED	1
17	S333R CYLINDER EJECTOR	SR 22019	4130 STEEL	1
18	S333R MAIN SPRING GUIDE ROD	SR 22020	4130 STEEL	2
19	S333R FIRING PIN CUP	SR 22021	01 1050 STEEL	2
20	S333R CYL ARM PIVOT POST	SR 22022	01 4140	1
21	S333R EJECTOR SPRING POST	SR 22023	ALUMINUM	1
22	S333R CYLINDER PIVOT PIN	SR 22024	4130 STEEL	1
23	S333R FIRING PIN SPRING	SR 22025	MUSIC WIRE	2
24	S333R EJECTOR SPRING	SR 22026	MUSIC WIRE	1

ITEM NO.	DESCRIPTION	PartNo	Material	QTY.
25	S333R HAMMER STRUT SPRING	SR 22027	MUSIC WIRE	1
26	S333R FIRING PIN BUSHING	SR 22028	TITANIUM	2
27	S333R CYL RELEASE BUTTON PLUNGER	SR 22029	STEEL	1
28	S333R TRIGGER RETURN HAND SPRING	SR 22030	SQUARE WIRE	1
29	S333R BOLT SPRING	SR 22031	MUSIC WIRE	1
30	S333R TRIGGER PIVOT PIN	SR 22032	01 4140	2
31	S333R FRAME PIN FRONT	SR 22033	01 4140	1
32	S333R CYL RELEASE BUTTON SPRING	SR 22034	MUSIC WIRE	1
33	S333R HAMMER PIVOT PIN	SR 22035	01 4130	1
34	S333R STRUT PLUNGER	SR 22036	01 4140	1
35	S333R CYLINDER PIVOT SPRING	SR 22038	MUSIC WIRE	1
36	#8-32 SET SCREW X .375 CUP POINT	SR 22040	MCMMASTER	1
37	#8-32 SET SCREW X .125	SR 22041	MCMMASTER	1
38	S333R FRAME MID PIN	SR 22042	01 4140	1
39	#8-32 BTN HD CAP SCREW	SR 22043	MCMMASTER	1
40	S333R SAFETY TRIGGER TAB	SR 22044	4140	1
41	S333R MAIN SPRING PLATE	SR 22045	PA66 NYLON 30% GF	1
42	S333R FIRING PIN CUP	SR 22046	4130	2
43	S333R TRIGGER SAFE PIN	SR 22047	01 STEEL	1
44	S333R ELASTOMER GRIP	SR 22048	70 DUR URETHANE	1
45	S333R CRANE LOCK BOLT	SR 22049	4140	1
46	S333R CRANE LOCK PLUNGER	SR 22052	01 STEEL	1
47	S333R CRANE LOCK PIN	SR 22053	01 STEEL	1
48	S333R EJECTOR SPRING SCREW TUBE	SR 22054	1057	1
49	S333R CRANE BOLT SPRING	SR 22055	MUSIC WIRE	1
50	S333R TRIGGER BUSHING	SR 22056	01 STEEL	2
51	S333R MAIN SPRING HAMMER PIN	SR 22057	01 1050	1
52	S333R CYLINDER RELEASE PIN	SR 22058	01 1050	1
53	S333R FRAME TANG SCREW	SR 22059	STEEL	1
54	S333R TRIGGER SAFETY SPRING	SR 22060	MUSIC WIRE	1
55	S333R TRIGGER SPRING BUSHING	SR 22061	01 STEEL	1
56	S333R CYLINDER POSITION RING	SR 22062	4130	1
57	S333R SNAP CAP RING	SR 22065	ABS 30% GF	1
58	S333R CYLINDER RETAINER	SR 22069	4130	1
59	S333R CYLINDER LOCKER	SR 22070	4130	1
60	S333R CYLINDER FACE BUSHING	SR 22072	TITANIUM	1
61	S333R GRIP EXTENSION	SR 22134	PA66 30% GF	1
62	S333R GEN3 ONLY FRONT PORT INSERT	SR 22316	4130 STEEL	1
63	S333R TUBE SHROUD	SR 22317	6160 ALUM	1
64	S333R GEN3 FRONT THREADED TUBES	SR 22366	4130 STEEL	2
65	S333R GEN3 BARREL BODY	SR 32011	7075 T6	1



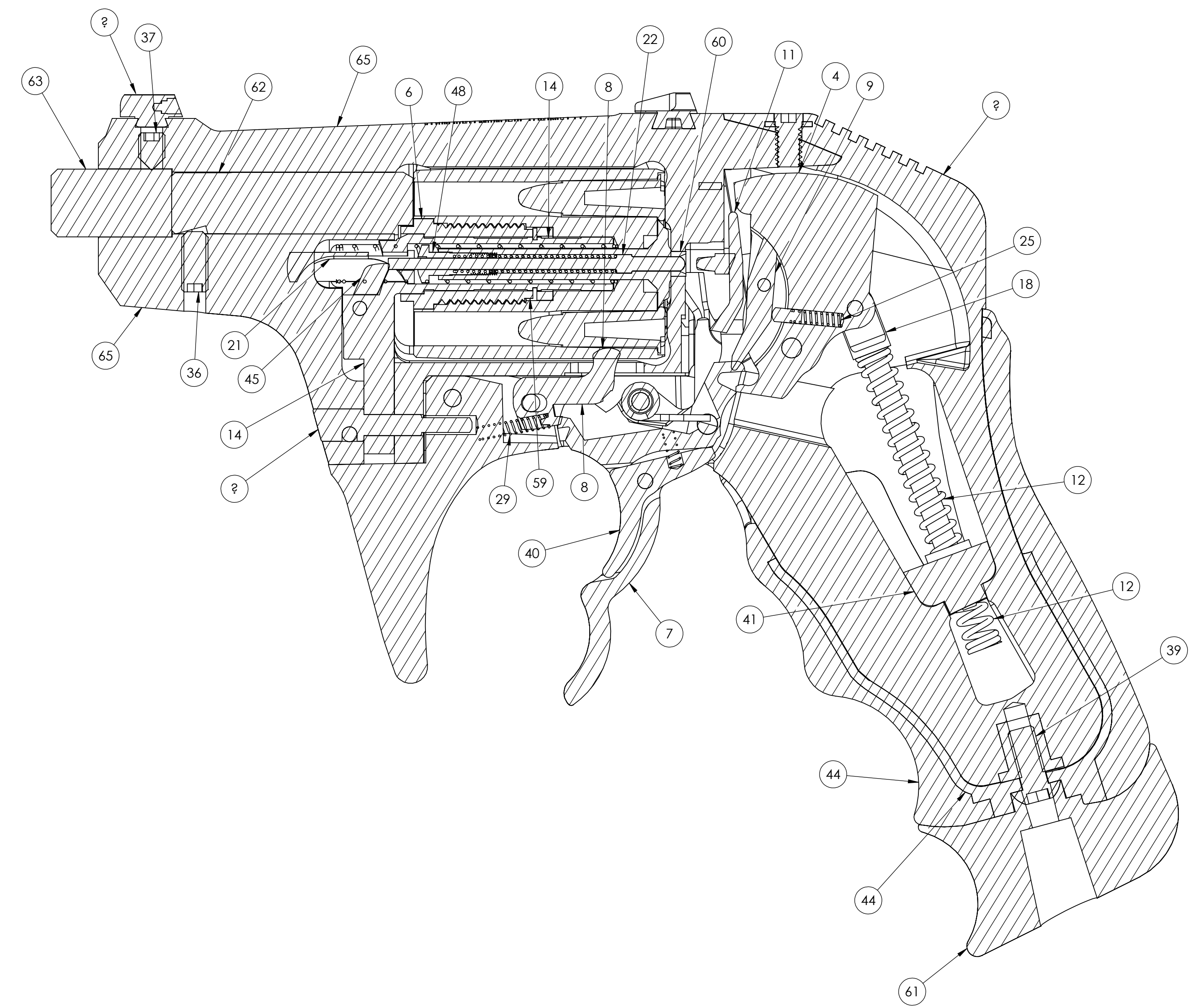
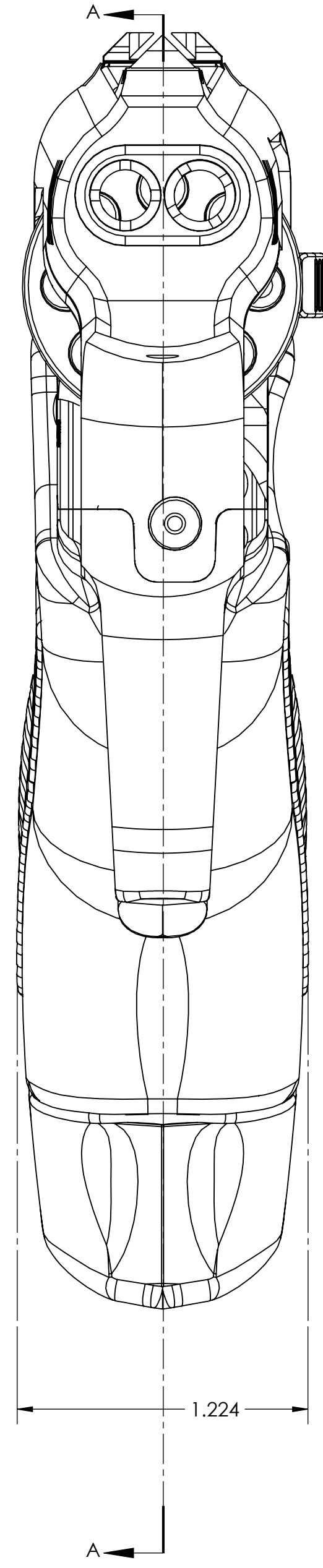
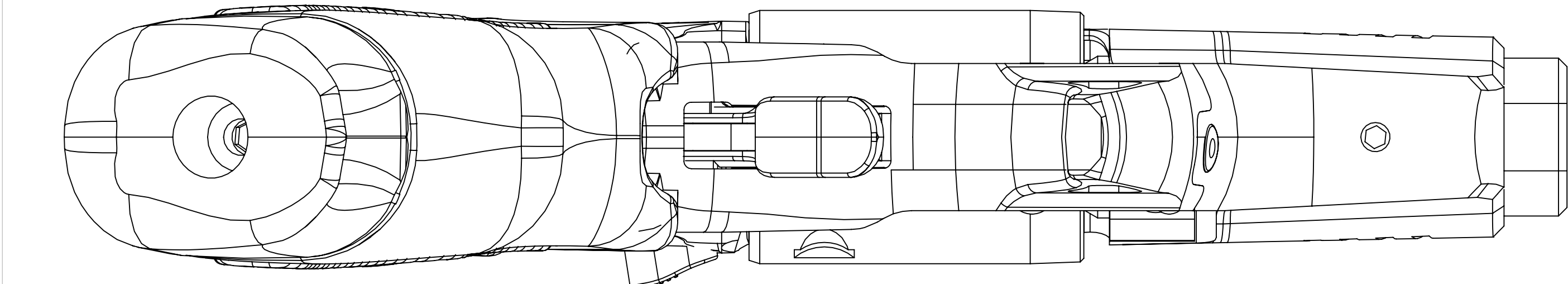
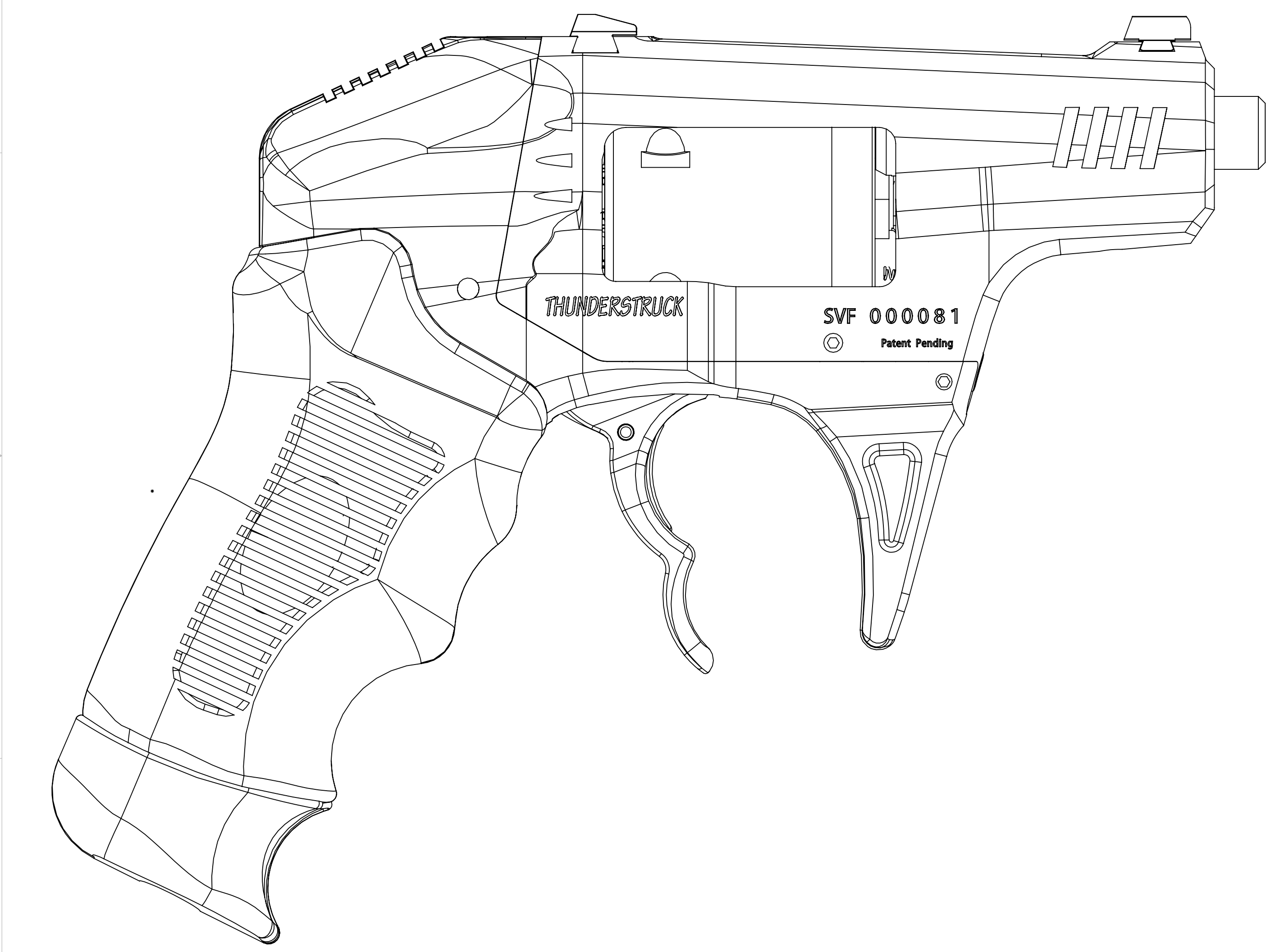
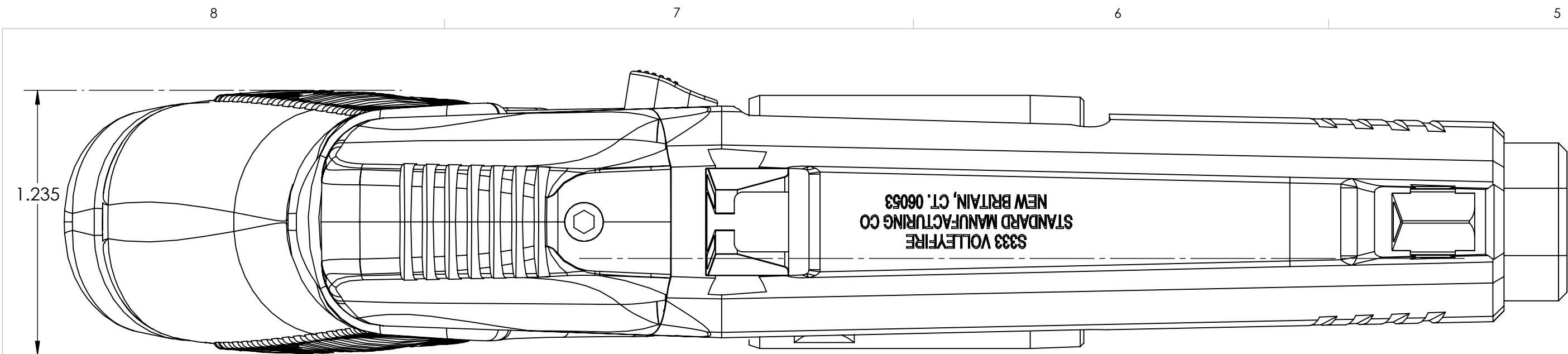
**PROPRIETARY AND CONFIDENTIAL**  
 THE INFORMATION CONTAINED IN THIS DRAWING IS THE SOLE PROPERTY OF CONNECTICUT SHOTGUN MFG CO. ANY REPRODUCTION IN PART OR AS A WHOLE WITHOUT THE WRITTEN PERMISSION OF CONNECTICUT SHOTGUN MFG CO. IS PROHIBITED.

UNLESS OTHERWISE SPECIFIED:		NAME	DATE	CONNECTICUT SHOTGUN MFG CO
DIMENSIONS ARE IN INCHES	TOLERANCES:	DRAWN	P/JC	08/08/18
FRACTIONAL ±.02	ANGULAR: MACH ±.12 BEND ±.10	CHECKED		
TWO PLACE DECIMAL ±.01	THREE PLACE DECIMAL ±.003	ENG APPR:		
		MFG APPR:		
		G.A.		
		COMMENTS:		
NEXT ASSY	USED ON	FINISH		
APPLICATION				

TITLE:  
**S333R REVOLVER GEN3**

SIZE DWG. NO. REV  
**D SR 22300 A**

SCALE: 1:2 WEIGHT: SHEET 1 OF 2



SECTION A-A  
SCALE 2:1

**PROPRIETARY AND CONFIDENTIAL**  
THE INFORMATION CONTAINED IN THIS DRAWING IS THE SOLE PROPERTY OF CONNECTICUT SHOTGUN MFG CO. ANY REPRODUCTION IN PART OR AS A WHOLE WITHOUT THE WRITTEN PERMISSION OF CONNECTICUT SHOTGUN MFG CO. IS PROHIBITED.

UNLESS OTHERWISE SPECIFIED: DIMENSIONS ARE IN INCHES TOLERANCES: FRACTIONAL ±.02 ANGULAR: MACH ±.12 BEND ± TWO PLACE DECIMAL ±.01 THREE PLACE DECIMAL ±.003		DRAWN P/JC	NAME P/JC	DATE 08/08/18	CONNECTICUT SHOTGUN MFG CO
INTERPRET GEOMETRIC TOLERANCING PER MATERIAL		CHECKED ENG APPR.	ENG APPR.		TITLE: <b>S333R REVOLVER GEN3</b>
NEXT ASSY		USED ON	FINISH	Q.A. COMMENTS:	SIZE DWG. NO. REV <b>D SR 22300 F</b>
APPLICATION					SCALE: 1:2 WEIGHT: SHEET 2 OF 2

D SR 22300 F