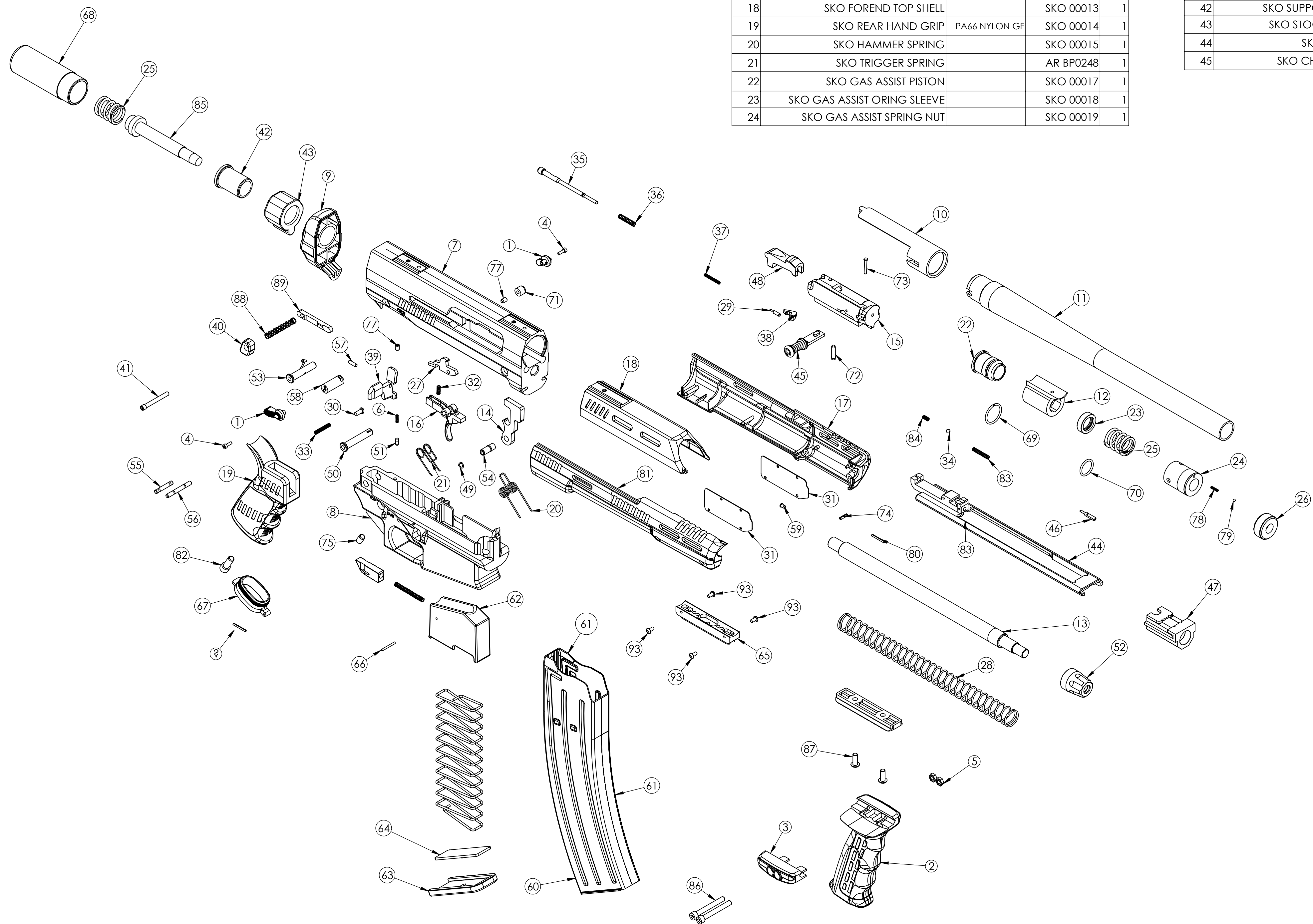


ITEM NO.	Description	MATERIAL	PartNo	QTY.
1	DBL PUMP SAFETY END CAP		SKO 0090-2	2
2	DBL PUMP FRONT GRIP		DP 0125	1
3	DBL PUMP GRIP CLASP		DP 0126	1
4	2.5M SOC HD CAP SCREW X 10MM		SP 00116	2
5	#10-24 SMALL PATTERN HEX NUT		PURCHASED	2
6	SKO SAFETY PLUNGER SPRING		RBOU 0039	1
7	SKO RECEIVER UPPER	ALUM 7075	SKO 00001	1
8	SKO RECEIVER LOWER	ALUM 7075	SKO 00002	1
9	SKO RECEIVER REAR HOUSING	PA66 30% GF	SKO 00004	1
10	SKO BARREL EXTENSION		SKO 00005	1
11	SKO BARREL TUBE	4140 STEEL	SKO 00306	1
12	SKO BARREL LUG WITH GAS ASSIST	4140 STEEL	SKO 00007	1
13	SKO MAG TUBE BOLT SPRING GUIDE	STEEL ROD	SKO 00008	1
14	SKO HAMMER WITH BUSHING		SKO 00009	1
15	SKO BOLT BODY	4140 STEEL	SKO 00010	1
16	SKO TRIGGER		SKO 00011	1
17	SKO FOREND LEFT SIDE		SKO 00012	1
18	SKO FOREND TOP SHELL		SKO 00013	1
19	SKO REAR HAND GRIP	PA66 NYLON GF	SKO 00014	1
20	SKO HAMMER SPRING		SKO 00015	1
21	SKO TRIGGER SPRING		AR BP0248	1
22	SKO GAS ASSIST PISTON		SKO 00017	1
23	SKO GAS ASSIST ORING SLEEVE		SKO 00018	1
24	SKO GAS ASSIST SPRING NUT		SKO 00019	1

ITEM NO.	Description	MATERIAL	PartNo	QTY.
25	SKO GAS ASSIST SPRING		SKO 00020	2
26	SKO GAS LH LOCK NUT		SKO 00021	1
27	SKO SAFETY SEAR B6		SKO 00022	1
28	SKO BOLT RETURN SPRING		SKO 00023	1
29	SKO EXTRACTOR PLUNGER		SKO 00024	1
30	SKO HOLD OPEN PLUNGER		SKO 00025	1
31	SKO FOREND HEAT SHIELD		SKO 00029	2
32	SKO SAFETY SEAR SPRING		SKO 00031	1
33	SKO HOLD OPEN SPRING		SKO 00035	1
34	SKO CHARGER DETENT BALL		SKO 00036	1
35	SKO FIRING PIN		SKO 00038	1
36	SKO FIRING PIN SPRING		SKO 00040	1
37	SKO EXTRACTOR SPRING	MUSIC WIRE	SKO 00041	1
38	SKO EXTRACTOR		SKO 00042	1
39	SKO LAST ROUND BOLT HOLD OPEN	4140 STEEL	SKO 00045	1
40	SKO MAGAZINE RELEASE BUTTON		SKO 00046	1
41	SKO CLIP RELEASE POST	STEEL	SKO 00047	1
42	SKO SUPPORT TUBE SCREW		MCMMASTER	1
43	SKO STOCK SUPPORT NUT		SKO 00060	1
44	SKO BOLT CARRIER		SKO 00065	1
45	SKO CHARGER HANDLE		SKO 00066	1

ITEM NO.	Description	MATERIAL	PartNo	QTY.
46	SKO LOCK RELEASE PLUUNGER		SKO 00067	1
47	SKO MUZZLE SIGHT MOUNT		SKO 00068	1
48	SKO BOLT LOCK		SKO 00069	1
49	SKO HAMMER D SPRING		SKO 00070	1
50	SKO FRONT DETENT RECEIVER PIN		SKO 00078	1
51	SKO SAFETY PLUNGER		SKO 00079	1
52	SKO FOREND KNOB		SKO 00080	1
53	SKO REAR DETENT PIN		SKO 00082	1
54	SKO HAMMER BUSHING	IN SKO 00009	SKO 00083	1
55	SKO TRIGGER PIN		SKO 00085	1
56	SKO HAMMER PIN		SKO 00086	1
57	SKO HOLD OPEN PIN		SKO 00087	1
58	SKO SAFETY BARREL		SKO 00090-1	1
59	SKO FOREND KNOB DETENT		SKO 00099	1
60	SKO MAGAZINE RIGHT SHELL		SKO 00101	1
61	SKO MAGAZINE LEFT SHELL		SKO 00102	1
62	SKO MAGAZINE FOLLOWER		SKO 00103	1
63	SKO MAGAZINE BOTTOM PLATE		SKO 00107	1
64	SKO MAGAZINE SPRING PLATE		SKO 00108	1
65	SKO FOREND ATTACHMENT		SKO 00109	1
66	SKO LAST ROUND POST PIN		SKO 00110	1
67	SKO REAR GRIP CAP	70 DUR RUBBER	SKO 00119	1
68	SKO MINI BUFFER TUBE		SKO 02125	1
69	SKO GAS ASSIST METAL RING		SKO 00133	1
70	SKO GAS ASSIST ORING		SKO 00134	1
71	SKO RECEIVER STANDOFF		SKO 00135	1
72	SKO FIRING PIN STOP PIN		SKO 00136	1
73	SKO EXTRACTOR PIVOT PIN		SKO 00137	1
74	2.5MM SLOTTED ROLL PIN		SKO 00138	1
75	1/4-28 UNF SOC HD CAP SCREW		SKO 00140	1
76	SKO FOREND DETENT DISC		SKO 00175	1
77	#8-32 UNC SET SCREW X .25		SKO 00142	2
78	SKO TENSION NUT DETENT SPRING		SKO 00143	1
79	2.5MM BALL DETENT		SKO 00144	1
80	2MM SLOTTED ROLL PIN X 10MM		MCMMASTER	2
81	SKO FOREND RIGHT SIDE		SKO 00212	1
82	#10-24 UNC SET SCREW X .375		SKO 00300	1
83	SKO LOCK RELEASE SPRING		SKO 00032	1
84	SKO CHARGER DETENT SPRING		SKO 00033	1
85	SKO MINI BUFFER TUBE		SKO 00160	1
86	#10-24 SOCKET HD CAP SCREW		SKO 00130	2
87	#10-24 BUTON HD CAP SCREW		DP 0131	2
88	SKO CLIP RELEASE SPRING		SKO 00034	1
89	SKO CLIP HOLD BAR		SKO 00049	1
90	SKO MAG LAST ROUND HOLD OPEN		SKO 00104	1
91	SKO MAGAZINE CLIP SRPING SRND		SKO 00106-5	1
92	SKO LAST ROUND POST SPRING		SKO 00129	1
93	#5-40 BTN HD CAP SCREW X .25		SKO 0172	4
94	DOUBLE PUMP 7 SLOT RAIL		DP 0129	1



FOR STOCK BODY ORDER:  
SKO 00120 AND SKO 00220  
ARE INCLUDED IN PART SKO 01120

**PROPRIETARY AND CONFIDENTIAL**  
THE INFORMATION CONTAINED IN THIS  
DRAWING IS THE SOLE PROPERTY OF  
CONNECTICUT SHOTGUN MFG CO. ANY  
REPRODUCTION IN PART OR AS A WHOLE  
WITHOUT THE WRITTEN PERMISSION OF  
CONNECTICUT SHOTGUN MFG CO. IS  
PROHIBITED.

UNLESS OTHERWISE SPECIFIED:	DRAWN	NAME	DATE	CONNECTICUT SHOTGUN MFG CO
DIMENSIONS ARE IN INCHES	PJC		1/10/16	
TOLERANCES:	CHECKED			
FRACTIONAL ±.02	ENG APPR:			
ANGULAR: MADE ±.12 BEND ±	MFG APPR:			
TWO PLACE DECIMAL ±.01	G.A.			
THREE PLACE DECIMAL ±.003	COMMENTS:			
INTERPRET GEOMETRIC				
TOLERANCING PER:				
MATERIAL				
NEXT ASSY	USED ON	FINISH		
APPLICATION				

TITLE:  
**SKO MINI  
CLIP  
SHOTGUN**  
SIZE DWG. NO.  
**D SKO 31000** REV  
SCALE: 1:4 WEIGHT: SHEET 1 OF 1

D SK2 21000 REV