

FM Series



Product description

With the increasing demands and requirements of irregular LED display, we designed a brand new flexible LED module for this kind of particular market. The material of PCB is made by FPCB, could be made into irregular shapes according to different requests, and widely used in the stage decoration, fashion show, TV station, bank, plaza, shopping mall, hotel and Bar.

Flexible module, special shapes, easy installation.

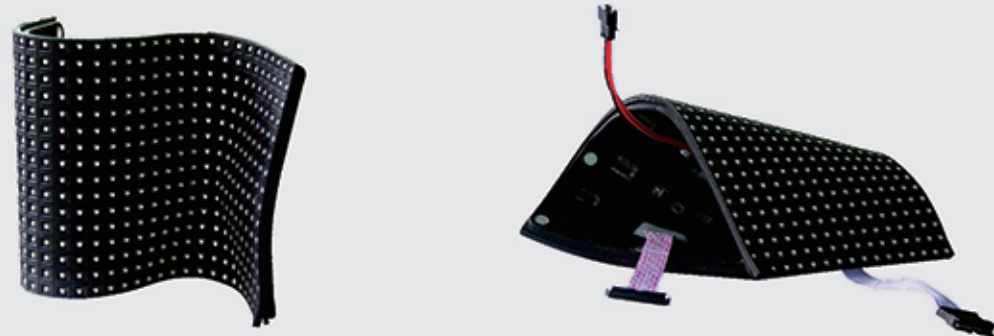
- 1.The material of mask is silicon, high flatness and high color uniformity.
- 2.The module is soft and flexible, could be designed into any different shapes as you can imaging. For example, It can be made into cylinder-shape, S-shape, wave-shape by connecting the modules and fixed frame or cabinet.
- 3.Connected by fast power and data connectors, flexible module could easily reach different shapes LED display.

Project reference



FM Series

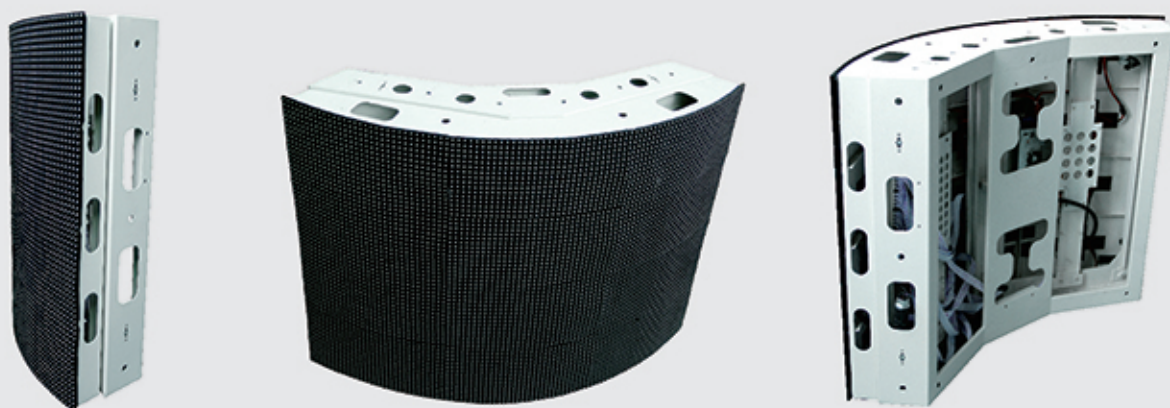
Flexible module



Single layer cabinet



Double layers cabinet



Parameter

Model	P6.66	P10
Pixel pitch	6.66mm	10mm
Scan mode	12S	8S
Pixel density	22500dots/m ²	10000dots/m ²
Pixel configuration	SMD3528	
Module resolution	48x24dots	32x16dots
Module size	360x160mm	
Cabinet size	640x640mm	
Cabinet resolution	96x96dots	64x64dots
Brightness(full white)	1100~1300cd/m ²	850~1000cd/m ²
Refresh rate	1920Hz/s	
Weight	8.8Kg/m ²	
Viewing angle	140°(H)/140°(V)	
Power consumption (Max./Avg.)	420W/168W/m ²	280W/100W/m ²
Signal input	LED-Hero Customized	