

# Protect Wake County Coalition

Responsible Growth Matters  
Join Us in Making a Difference

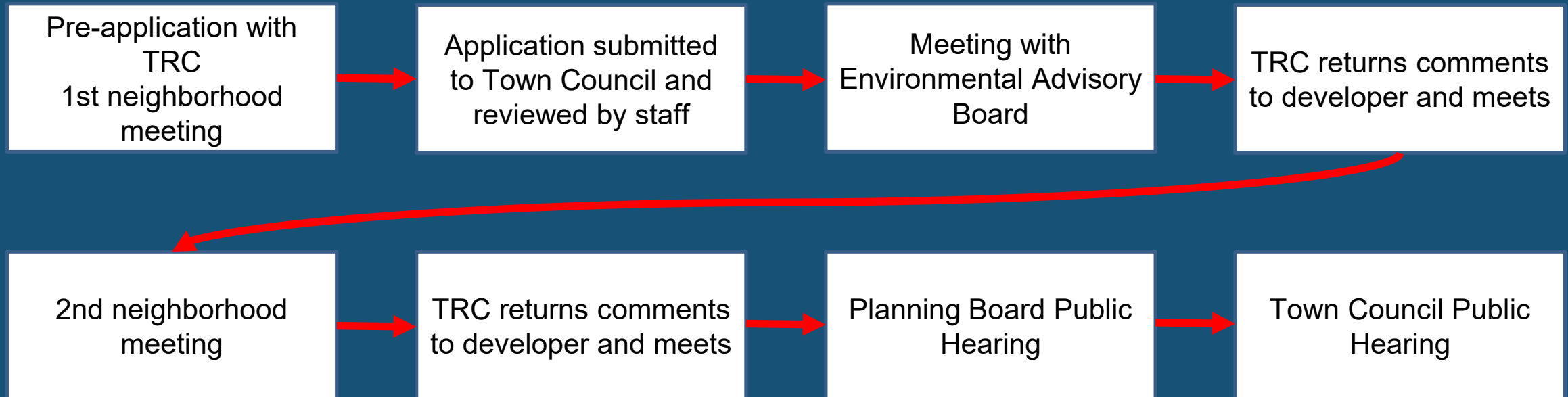


# Community Meeting Agenda

1. Environmental Advisory Board Meeting – Debrief
2. Steps in the Rezoning Process
3. House Keeping Rules Reminder
4. What Does a 300MW DC Look Like
5. Wish List Discussion
6. Upcoming Dates
7. Volunteer Roles & Next steps

# **EAB Debrief and Clarifications**

# The Process to Rezone



# Considerations for this Application

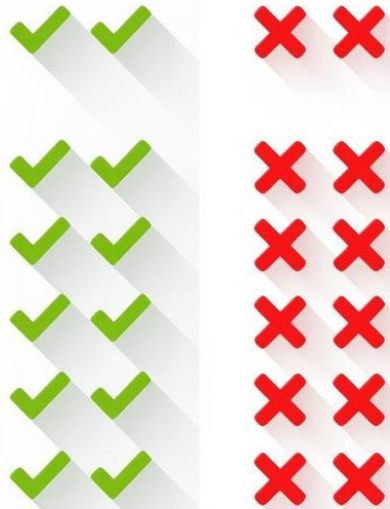


# Timeline

Event	Estimated Date	Open to Public	Ability to Speak?
TRC Revision Review	TBD	No	No
UDO Working Session	January 22, 2026	Yes	No
2 <sup>nd</sup> neighborhood meeting	One month before anticipated public hearings (Spring 2026?)	Yes	Yes
Planning Board Public Hearing	TBD (Est. Q2 2026?)	Yes	Yes
Town Council Public Hearing	TBD (Est. Q2 2026)	Yes	Yes

# House Keeping Rules

## DO



- Show up and wear **red**
- Invite friends!
- Ask to speak with town council members, candidates, etc. in private
- Be informed about the facts
- Attend town meetings, candidates' forums, etc.
- Canvass neighbors, local businesses

## DON'T

- Be rude or disruptive when attending town meetings
- Say "not in my backyard"
- State that PWCC has endorsed certain candidates
- Be discouraged by what you've learned tonight

**What Does a 300MW  
Data Center Look  
Like?**



# WHAT DOES A 300MW DC LOOK LIKE?

## Legend

- 96 Generators with ~200MW-300MW Load Capacity on 80 Acres
- Feature 1

45.836403° -119.691492°

96 Generators with ~200MW-300MW Load Capacity on 80 Acres

Beardman, OR





WHAT DOES THE INTERIOR OF A DATA  
CENTER LOOK LIKE (MSFT)?





# WHAT'S A FAÇADE?



# PREFERRED FAÇADE





# WHAT'S IN A HEIGHT?

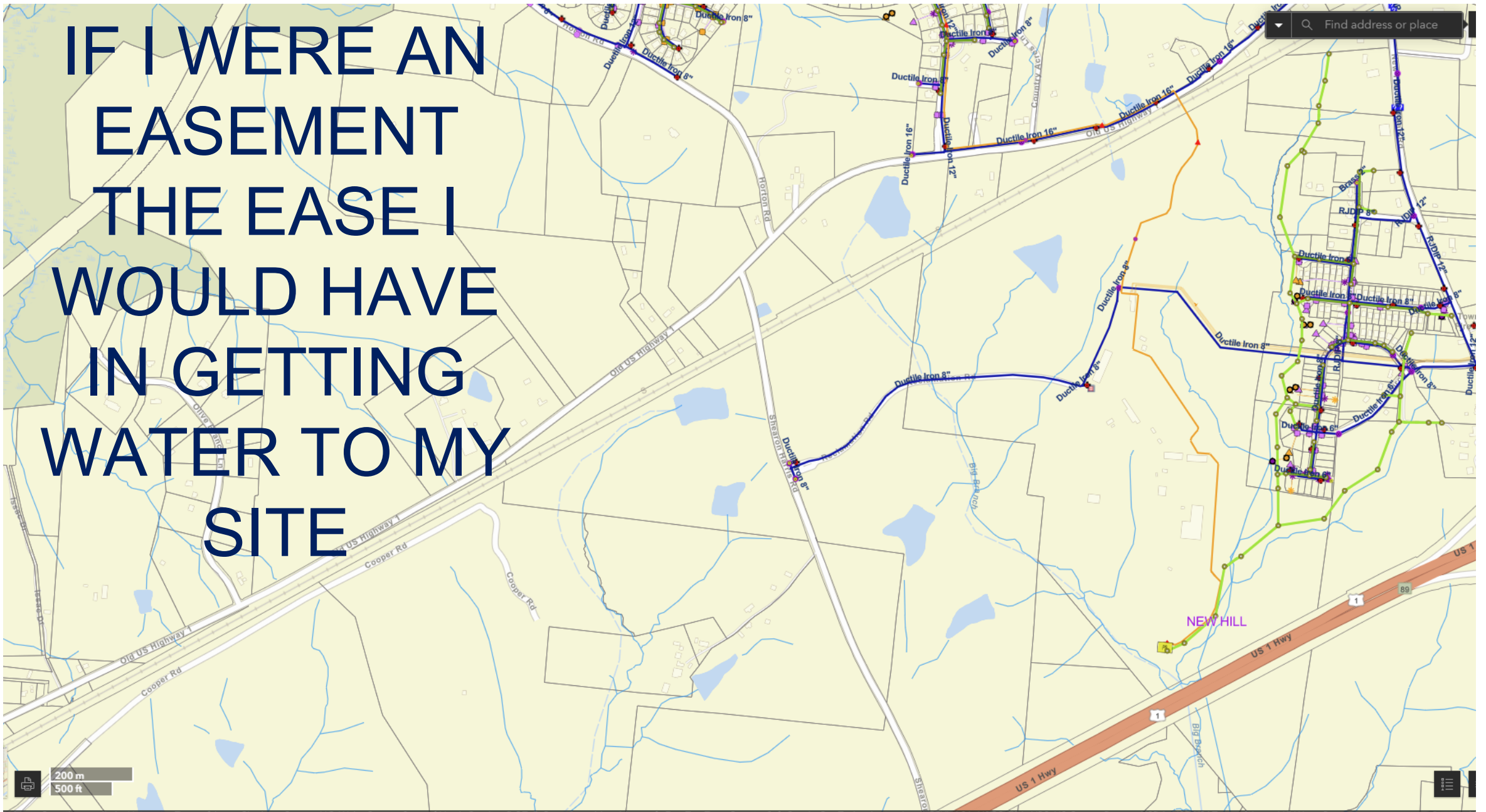




WATER WATER  
EVERYWHERE  
BUT NOT A  
DROP FOR AC!



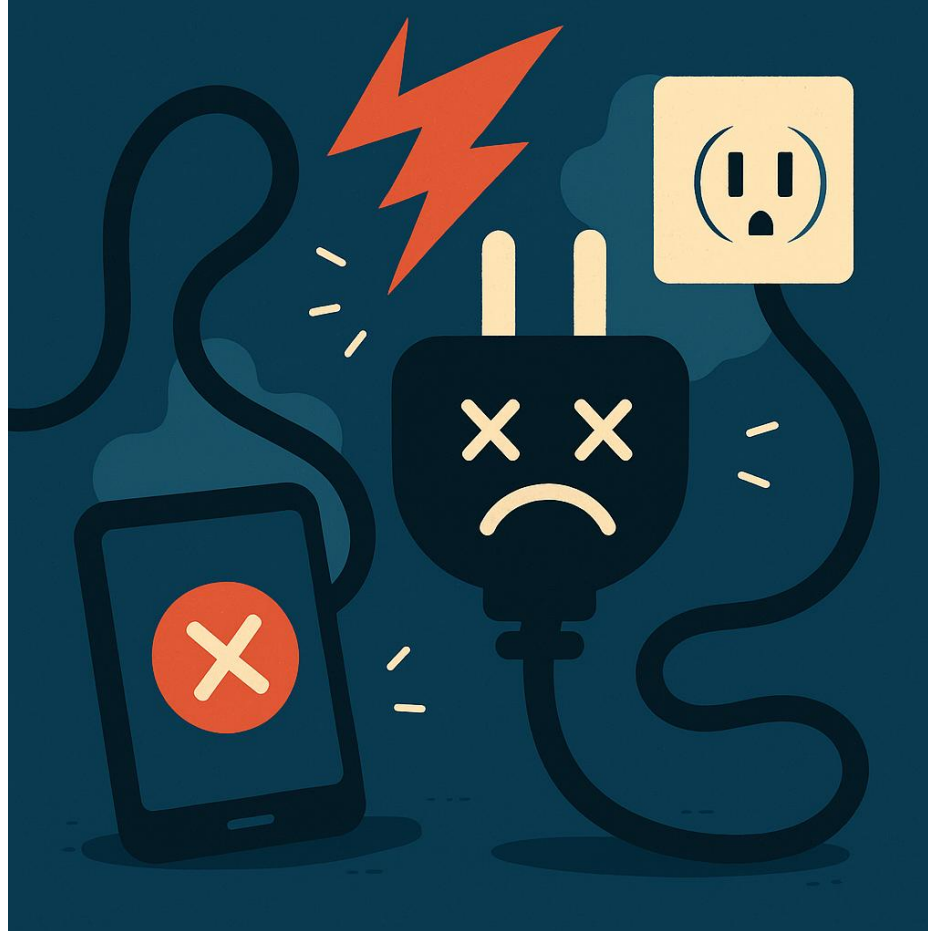
IF I WERE AN  
EASEMENT  
THE EASE I  
WOULD HAVE  
IN GETTING  
WATER TO MY  
SITE



# PROPERTY REQUESTING TOWN ANNEXATION SHOULDN'T BE ALLOWED TO CHERRY PICK UTILITIES!

NATELLI WANTS TOA  
ANNEXATION FOR  
TWO REASONS:  
WATER &  
SEWAGE

BUT IGNORE TOA  
ELECTRIC UTILITY  
DUE TO GETTING  
BETTER ELECTRICITY  
RATES FROM DUKE  
ENERGY



NATELLI WANTS DUKE  
ENERGY FOR BETTER  
ELECTRIC RATES AND  
THE ABILITY TO LOCK-IN  
UTILITY RATES FOR  
POTENTIALLY **25 YEARS**  
WHILE DRIVING UP  
ELECTRIC FUEL COSTS  
FOR EVERYONE ELSE!

REQUIRE THE TOA  
MANDATE THAT ANY  
PROPERTY THAT  
REQUESTS ANNEXATION  
FOR DATA CENTER  
ZONING MUST ONLY USE  
TOA PROVIDED UTILITY  
SERVICES!

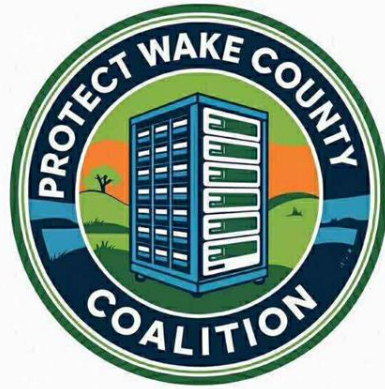


A photograph of a large, industrial-style building with a central entrance, surrounded by a paved lot and a tall light pole. The building has a concrete facade and a large, dark, rectangular opening in the center. To the left and right are long, low wings of the building. A tall, thin light pole stands in the middle ground. The foreground is a wide, paved area with some patches of dirt and gravel. The sky is overcast and grey.

WHAT TO DO WHEN THE MUSIC  
STOPS  
AKA. WHO'S ON THE HOOK?



# **Important Upcoming Dates**



## NO DATA CENTER PWCC ACTION PLAN

JOIN THE PROTECT WAKE COUNTY COALITION TO FIGHT THE DATA CENTER REZONE APPLICATION & DEMAND RESPONSIBLE GROWTH MOVING FORWARD FOR OUR COMMUNITY AND OUR FUTURE.



**MARK YOUR CALENDAR  
OCTOBER-NOVEMBER**



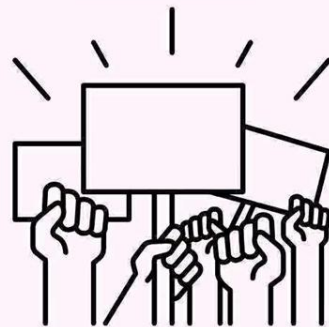
**WWW.PROTECTWAKE  
COUNTY.ORG**



**JOIN OUR FB:  
PROTECT WAKE  
COUNTY COALITION**



**EMAIL:  
INFO@PROTECTWAKE  
COUNTY.ORG**



It is important to make your voices heard at the town council meetings, county & state level. NC does NOT have the regulations in place for this size of a Data Center to be built. Let's get to work!

### SUN, OCT. 26TH

Join the PWCC at 7pm at the New Hill Community Center to find out what is being done to ensure that we either stop the DC from coming or get regulations in place.

### TUES. OCT. 28TH

Show up in large numbers to the Town Council Meeting-6pm. Wear Red for visibility. Sign up to speak.

### Oct. 16th-Nov. 4th

Research and VOTE for the new Town Council members. There will be 2-possibly 3 new members voting on the Data Center rezoning application.

### TUES. NOV. 10TH

Check the agenda for the 4:30pm Planning Board Mtg. If the Data Center is on the agenda-plan to attend!


### THUR. NOV. 13TH

Show up in large numbers to the Town Council Meeting-6pm. Wear Red for visibility. Sign up to speak.

### SUN. NOV. 23RD

Join the PWCC at 7pm at the New Hill Community Center to find out what is being done to ensure that we either stop the DC from coming or get regulations in place.





**We Need Your Help - PWCC is run by just a handful of volunteers** - all with full-time jobs and families, working hard to protect our community.

## **WAYS YOU CAN MAKE AN IMPACT**

- **Volunteer or donate:** [protectwakecounty.org](https://protectwakecounty.org)
- **Contact** Town Council, County Commissioners, and candidates, your voice matters.
- **Share flyers** from our website with neighbors.
- **Attend meetings:**
  - Town Council Meeting - Tues, Oct. 28 – *Apex Town Hall, 6 PM (wear red)*
- **Spread the word** on social media and through local media.
- **Have connections in law, economics, environment, energy, or health?** Let us know — we'd love to connect them with our team.
- **Know a sign printer or someone who can work with us on printing?** We need more yard signs and flyers.

# Website

[www.protectwakecounty.org](http://www.protectwakecounty.org)

---

- **Data Center Impacts** – health, environment, community, costs
- **Your Representatives** – contacts & templates
- **Media Coverage** – articles & news links
- **Volunteer Sign-Up** – canvassing, outreach, legal, research, social media
- **Petition** – Change.org link to sign & share
- **Resources** – Flyers for neighborhoods, businesses, and workplaces



**Questions???**

**Thank You for Your  
Time Today!**