



**SPECIAL DISTRICT PUBLIC DISCLOSURE DOCUMENT**

**BMP METROPOLITAN DISTRICT NO. 3**

As required pursuant to Section 32-1-104.8 of the Colorado Revised Statutes (“C.R.S.”) This Public Disclosure Document has been prepared by BMP Metropolitan District No. 3 (the “District”) to provide information regarding the District.

**DISTRICT’S POWERS**

The powers of the District as authorized by Section 32-1-1004, C.R.S. and under its Service Plan, as approved by the City Council of the City and County of Denver on August 30, 2010, are to support BMP Metropolitan District No. 1 in managing, implementing, and coordinating the financing, acquisition, construction, completion, and operation and maintenance of all public infrastructure and services within and without the project, including without limitation all streets, safety protection, water, sewer and storm drainage, transportation, mosquito control, and park and recreation facilities. The District was organized in conjunction with two other metropolitan districts, BMP Metropolitan District Nos. 1 and 2.

**DISTRICT’S SERVICE PLAN**

The District’s Service Plan, which can be amended from time to time, includes a description of the District’s powers and authority. A copy of the District’s Service Plan is available from the Division of Local Government in the State Department of Local Affairs (“Division”).

The BMP Metropolitan District No. 3 is authorized by Title 32 of the Colorado Revised Statutes to use a number of methods to raise revenues for capital needs and general operations costs. These methods, subject to the limitations imposed by Section 20 of Article X of the Colorado Constitution (“TABOR”), include issuing debt, levying taxes, and imposing fees and charges. Information concerning District directors, management, meetings, elections, and current taxes are provided annually in the Notice to Electors described in Section 32-1-809(1), C.R.S., which can be found at the District office, on file at the Division, or on file at the office of the Clerk and Recorder of Denver County.

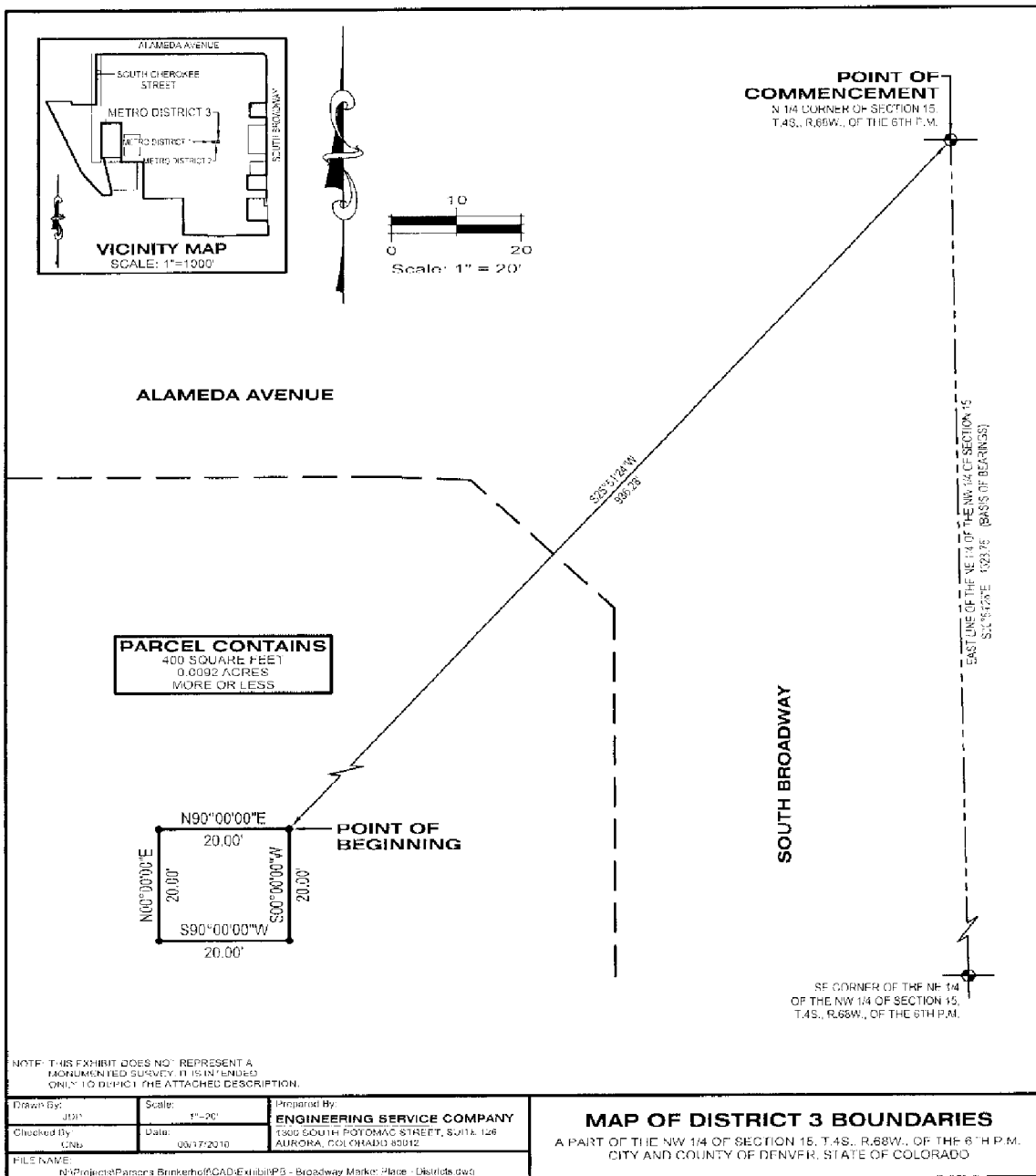
**DISTRICT MAP**

A map of the District’s boundaries is attached hereto as Exhibit A.

Dated this 8<sup>th</sup> day of December, 2014.

# EXHIBIT A

## District Map



AND

ASV Property below

