



GOEGLER

DEVELOPER INCORPORATED

Powered by Goegler Estate Incorporated

Where Real Estate Dreams Come to Life.

PHILIPPINES

52 & 230 HECTARES SOLAR PHOTOVOLTAIC
PLANT INVESTMENT MINDANAO



goeglerdeveloper@gmail.com



+63 9660518312 / +63 8888 031 90



www.goeglerdeveloper.com



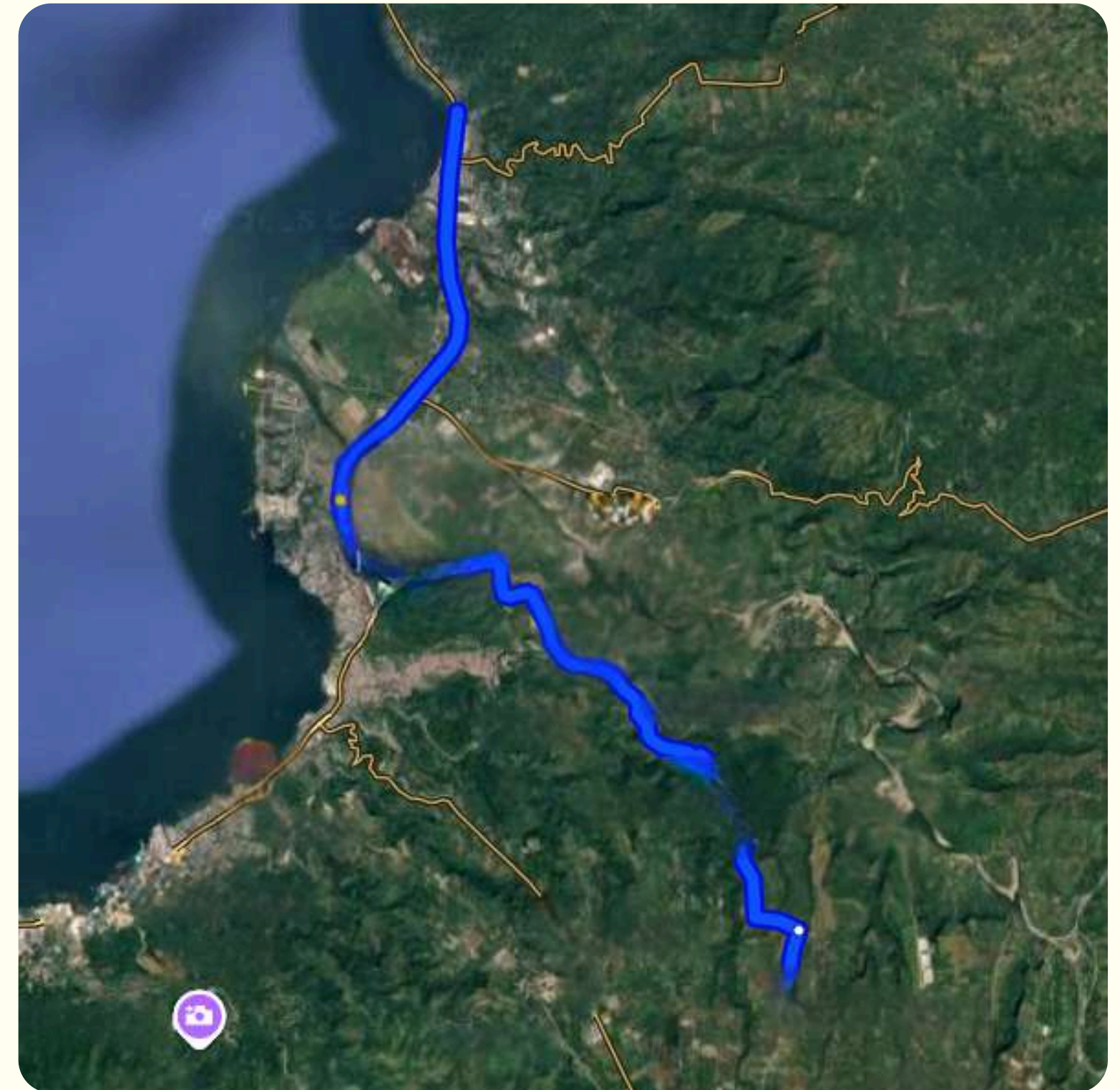
Property Overview

- **Property Name:** Province of Bukidnon
- **Location:** Manolo, Bukidnon
- **Total Land Area (sqm / hectares):** 52.2 & 230 Hectares
- **Land Type:** *(Choose one below)*
 - Photovoltaic & Mixed-Use
- **Current ownership status:** Available
- **Availability:** *Agricultural Land (Pre-Conversion)*
 - Per lot / subdivided



Location & Accessibility

- **Google Map or vicinity map**
- **Accessibility:**
 - 18.8km of land area to city proper
 - 5km of land area to nearest highway
 - 12.2km of land area to nearest port
- **Nearby landmarks:**
 - *Schools*
 - *Hospitals*
 - *Government offices*
 - *Tourism or industrial areas*

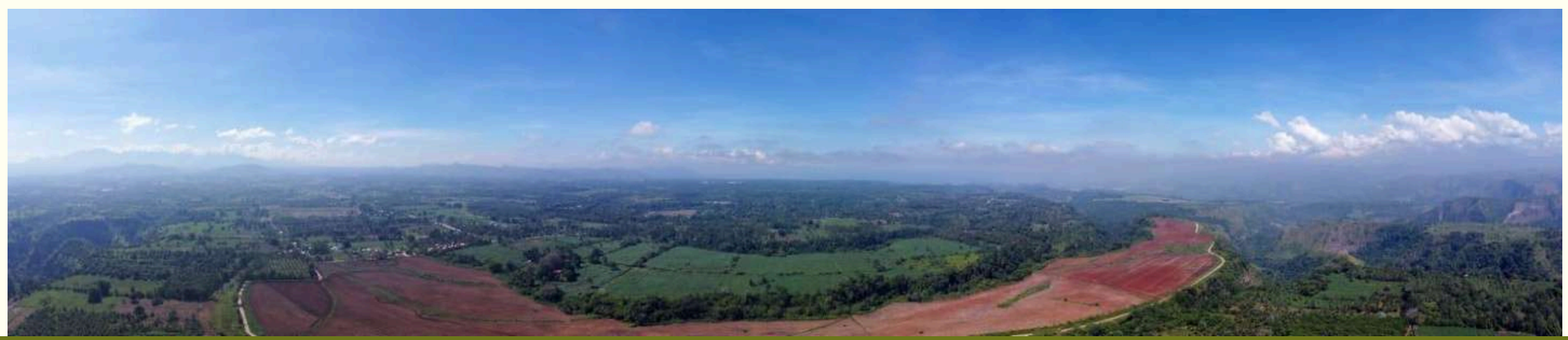
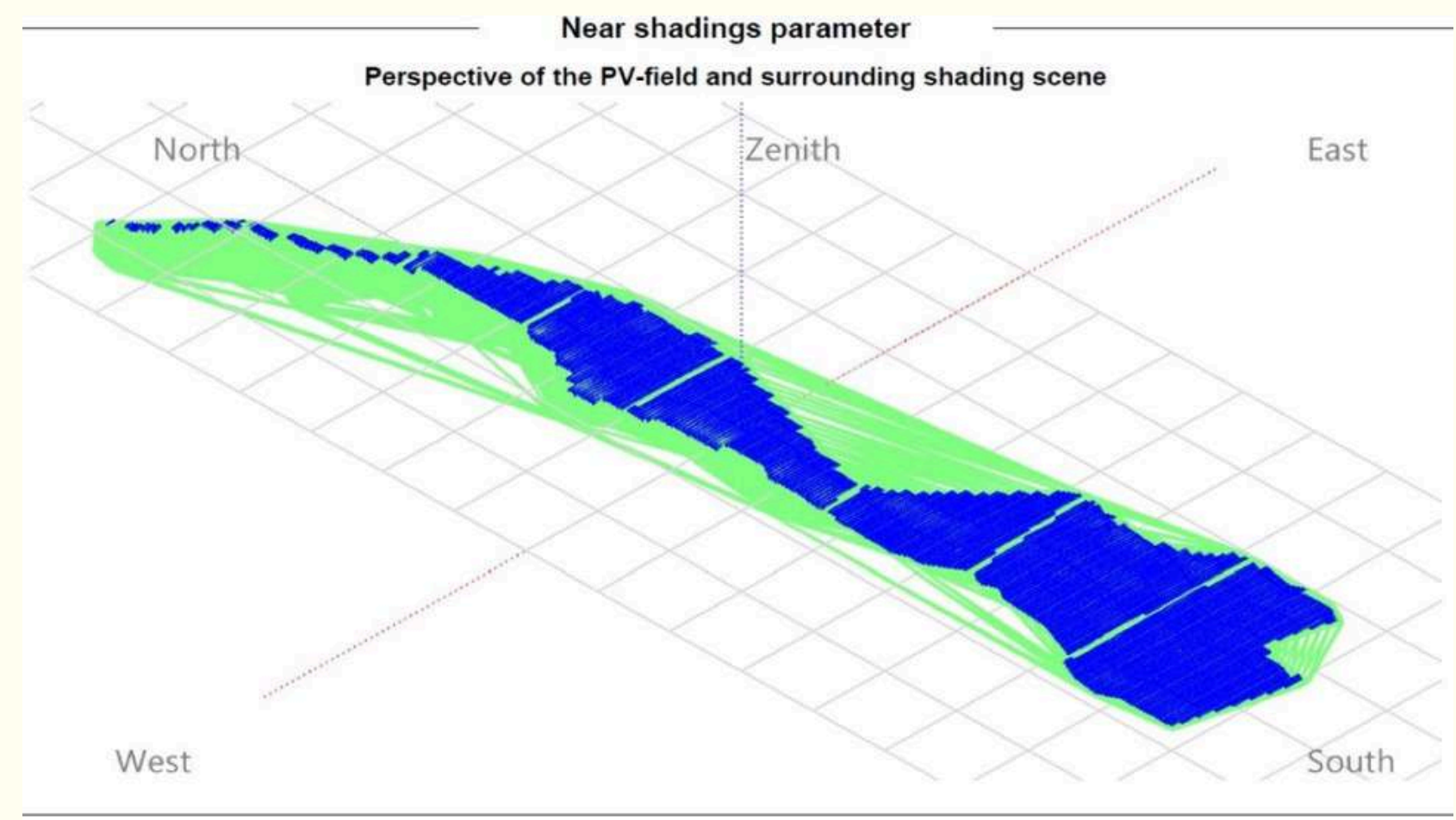


(Google Map Photo)

SITE SUITABILITY ASSESSMENT INSPECTION OF LAND

Solar Resource Potential:

- Infrastructure: overall accessibility and connection road to the harbour.
- Grid connection available (transmission lines and substations).
- Near shadings parameter are close to zero.
- Site suitability overview does not show not manageable risks



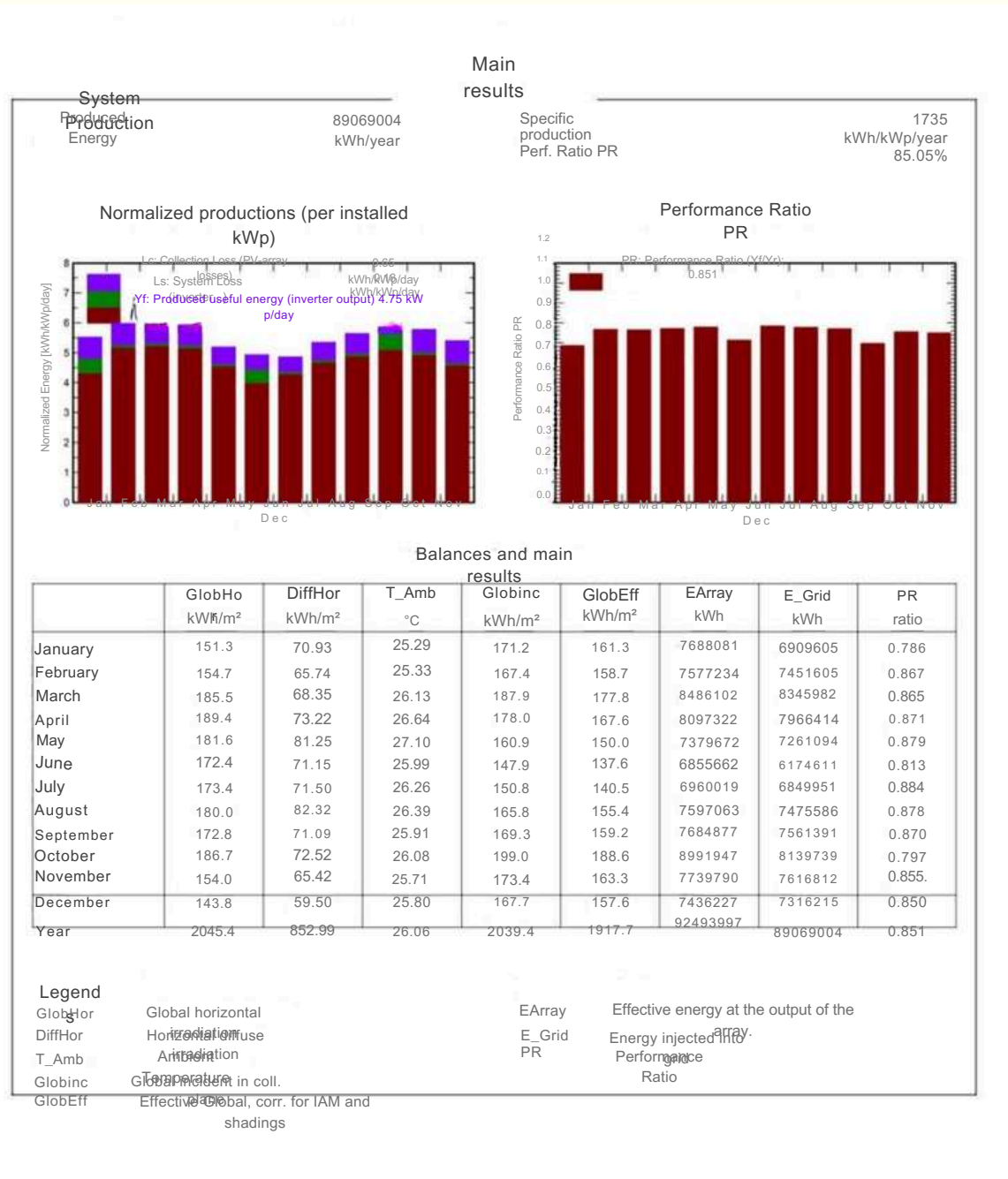
PVSYST ANALYSIS

EFFICIANCY /m

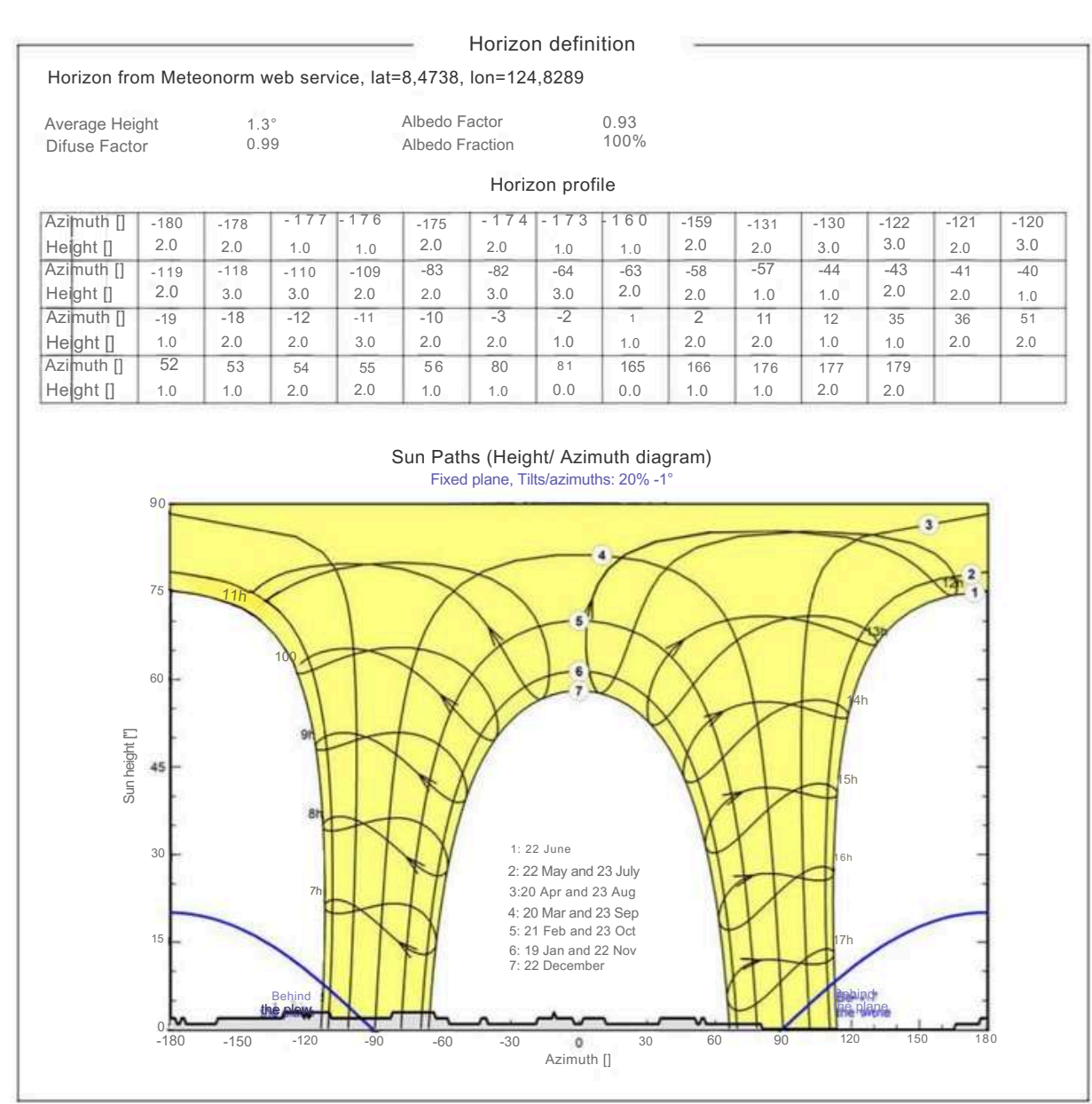
1. Produced Energy: 78271298 kWh/year PR
2. ratio shows maximum efficiency 0,858
3. Detailed Analysis see ANNEX 2

Balances and main results								
	GlobHor kWh/m ²	DiffHor kWh/m ²	T_Amb °C	GlobInc kWh/m ²	GlobEff kWh/m ²	EArray kWh	E_Grid kWh	PR ratio
January	151.2	70.96	25.29	171.1	161.2	6734091	6624575	0.865
February	154.6	66.23	25.33	167.3	158.6	6629098	6519692	0.871
March	185.4	68.40	26.23	187.9	177.8	7427853	6115668	0.727
April	189.3	73.31	26.64	178.0	167.6	7099498	6985034	0.877
May	181.6	81.22	27.10	161.0	150.0	6488464	6384431	0.886
June	172.4	71.08	25.99	148.0	137.7	6033771	5938520	0.897
July	173.4	71.49	26.26	150.9	140.5	6121795	5662084	0.839
August	180.0	82.30	26.39	165.8	155.5	6675325	6568780	0.885
September	172.8	71.09	25.91	169.3	159.3	6741308	6633256	0.875
October	186.7	72.53	26.08	198.9	188.6	7886191	7761731	0.872
November	154.0	65.44	25.71	173.4	163.3	6772933	6665837	0.859
December	143.7	59.56	25.80	167.6	157.5	6516412	6411689	0.855
Year	2045.1	853.61	26.07	2039.0	1917.5	81126739	78271298	0.858

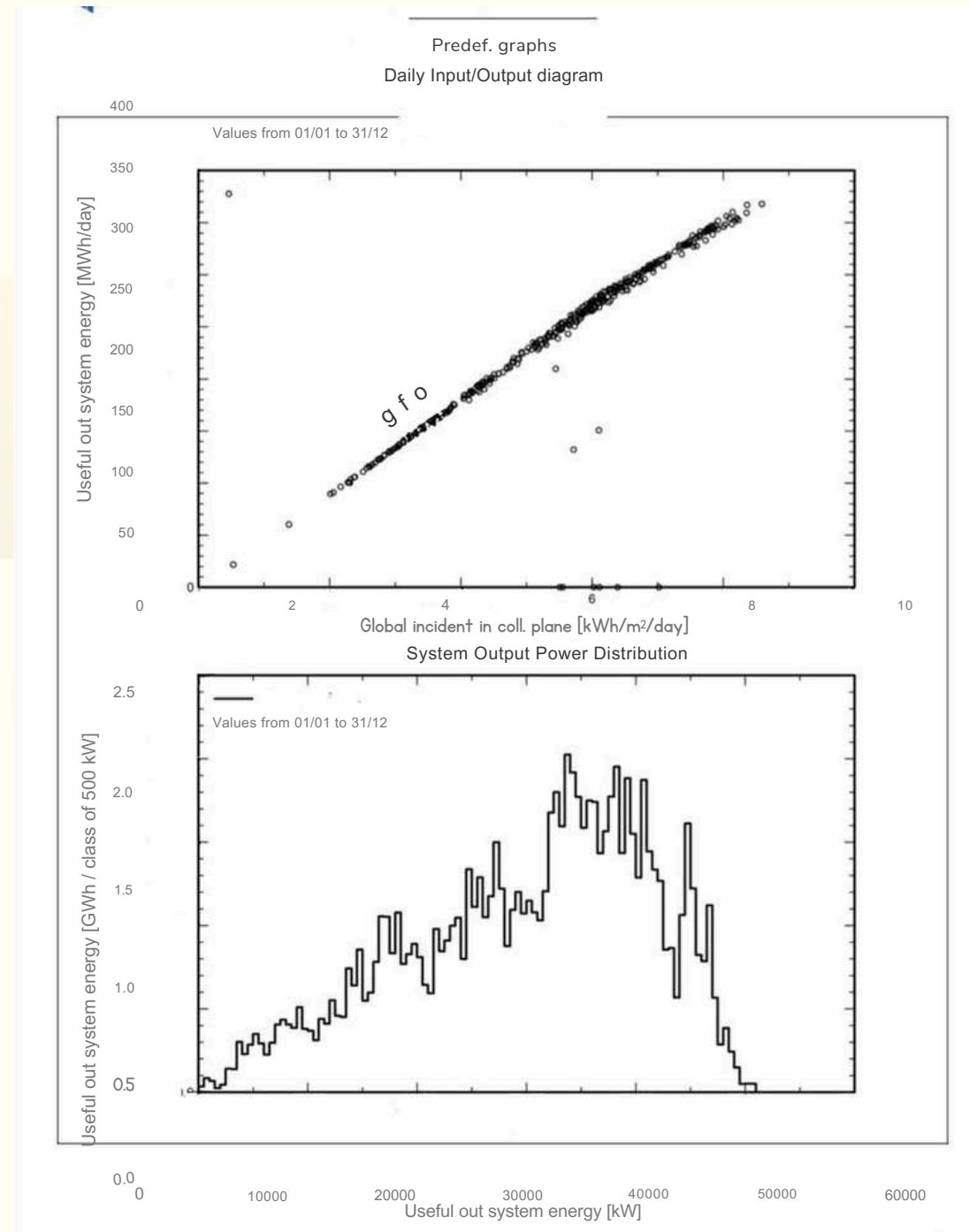
Main result



Near shadings parameter



Predef.graphs



Misamis Oriental, Mindanao

CAPEX est.

37,2
Mio
EUR

OPEX

3,1
Mio
EUR

ROI

> 25%

Land area:	52ha	
Project Size:	44.75MW	
Specific Production:	1,749 kWh/kWp/year	
Assumptions:		
Module:	GCL 615	GCL-NT12R/66GDF-615
Nominal Power:	44,75 MWp	
Number of Modules:	72772	
Inverter:	Huawei	SUN2000-215KTL-H0
Unit Nominal Power:	42.00MWac	
Number of Inverters:	210	
Annual energy production:	78.27GWh	[Probability P50]
Land Lease Cost:	67.200€/ha/p.a.	3,5 Mio €/p.a.
PPA:	0.15€/kWh	9.68 Philippine pesos per kilowatt hour
Discount rate:	5%	
System Degradation Rate:	0.4%	
System Lifetime:	30 years	

9.68 Philippine pesos per kilowatt hour

Published by C. Balita, Apr 9, 2024 As of January 31, 2024, the approved feed-in-tariff rate for solar power with an installation capacity target of 50 megawatts in the Philippines was **9.68 Philippine pesos per kilowatt hour**, the highest among other renewable energy sources.

Philippines: approved FIT rates by source 2024 | Statista
www.statista.com/statistics/1381667/philippines-approved-fit-rates-by-source/

Legal Documents & Ownership Assurance

- Topographic map
- Zoning certificate
- Cadastral map
- Google map
- Pictures
- Site Suitability Data



Ideal Buyers & Development Use

Ideal for:

- Individual buyers
- Investors
- Developers
- OFWs

Possible developments:

- Residential subdivision
- Commercial complex
- Warehouse or industrial use
- Farm, resort, or mixed-use project



Pricing

PRICE IS STILL NEGOTIABLE.

If you are interested for more details please scan the QR Code at the end of this presentation.

Optimization Path Roadmap

Focuses on ongoing improvement and long-term planning

- 01 Ocular Visit and Site-inspection**
to assess its actual condition, location, accessibility, and surroundings. It helps the buyer verify the property and make an informed purchase decision.
- 02 Submission of requirements**
The buyer submits all required documents (valid IDs and necessary forms) for verification and documentation preparation.
- 03 Contract signing**
Upon completion of document review, the contract is executed by both parties.
- 04 Payment completion**
Payment is completed in accordance with the agreed terms, and official receipts are issued.
- 05 Title transfer**
After full payment and compliance with contractual obligations, the Transfer Certificate of Title (TCT) is processed and transferred to the buyer's name.



“Secure your land investment with Goegler Developer Incorporated today.”

- Limited availability notice
- Invitation for site visit
- Contact details
- QR code or booking link




[Book Now!](#)

Thank You!

Contact Us

goeglerdeveloper@gmail.com 

+63 9660518312 / +63 8888 031 90 

www.goeglerdeveloper.com 