



GOEGLER
ESTATE INCORPORATED

PHILIPPINES

LOT PROPOSAL FOR SOLAR COMPANY



goeglerestateincorporated@gmail.com



+63 9660518312 / +63 8888 031 90




www.goeglerestateinc.com

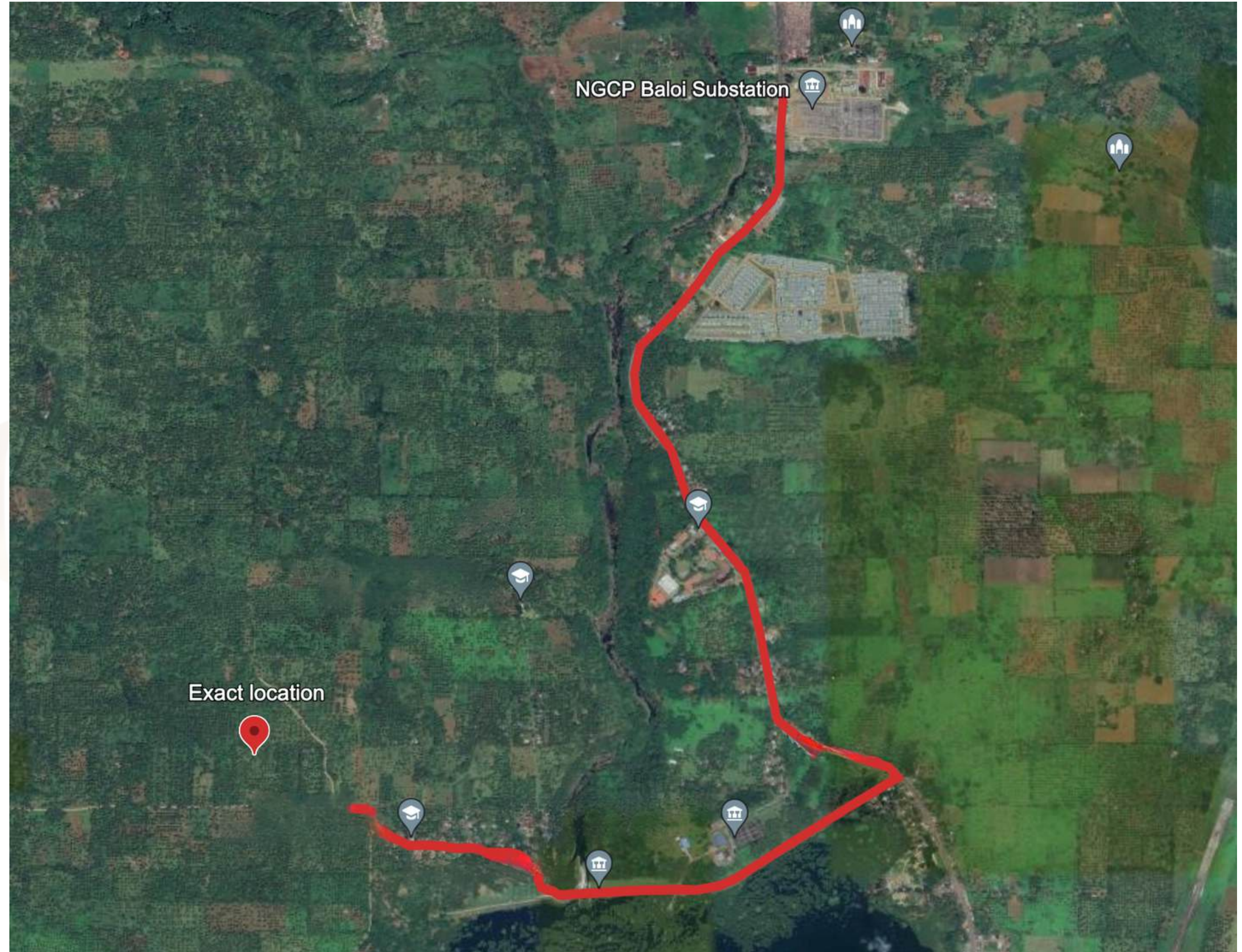
DETAILS AND INFORMATION OF LAND PRESENTED

The following are the details/information:

1. Total Land Area:300 Hectares, more or less,
2. Distance in kilometers from land to the nearest highway: 10.4 kilometer
3. Current use of the land:Agri-Industrial,
4. Types of Land terrain of the land:95-99% flat terrain, may be determined in a Droned videos
5. Existing structures of the land:The Lot is filled with coconut Trees sunrise facing east, sunset at west.
6. Are there any legal restrictions or zoning regulations associated with the land?
 - To be verified at the Municipal Planning and Development Office
7. Access to utilities such as water, electricity, and internet?
 - Yes.

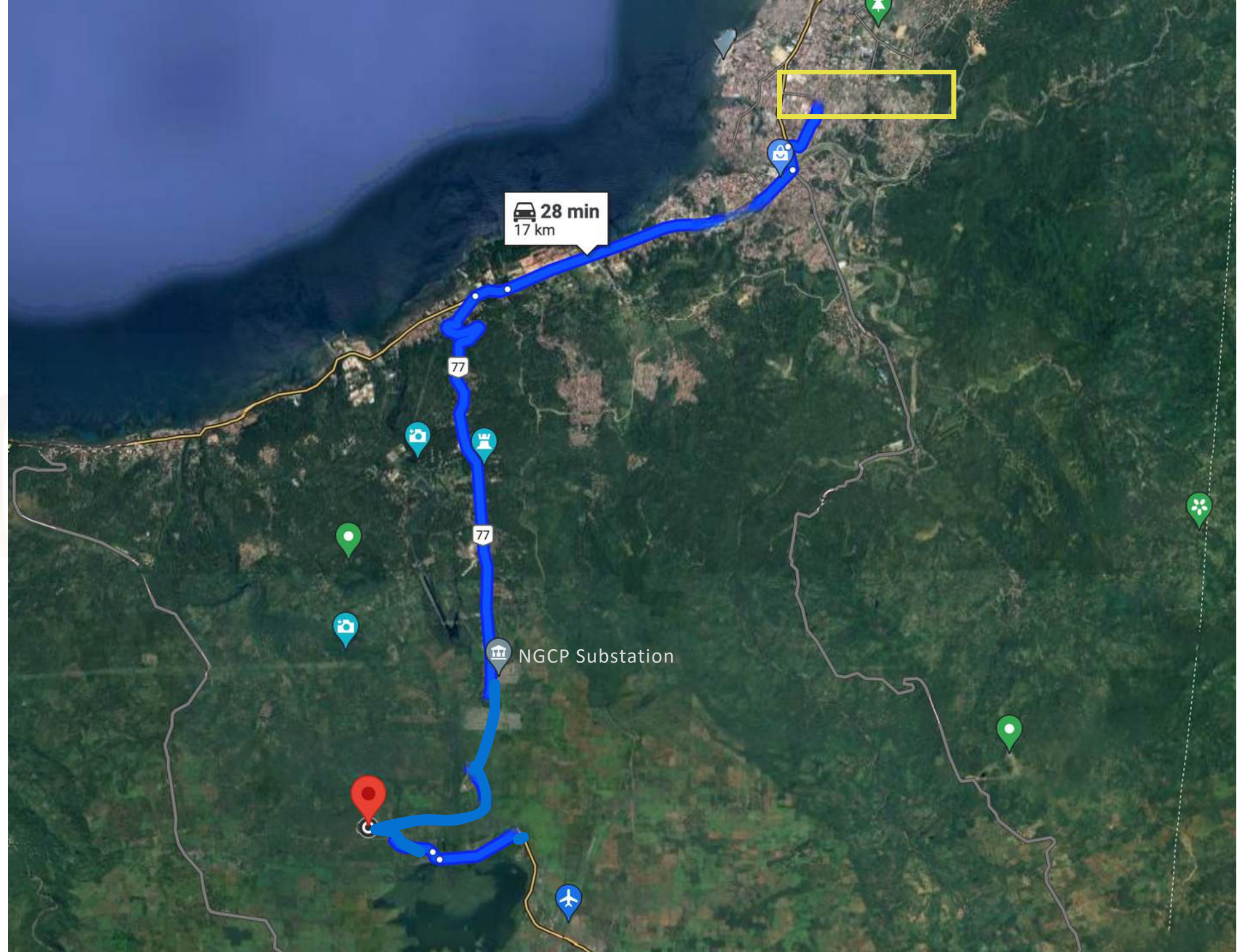
Land Area to National Grid Corporation of the Philippines (NGCP)

 5.7 km




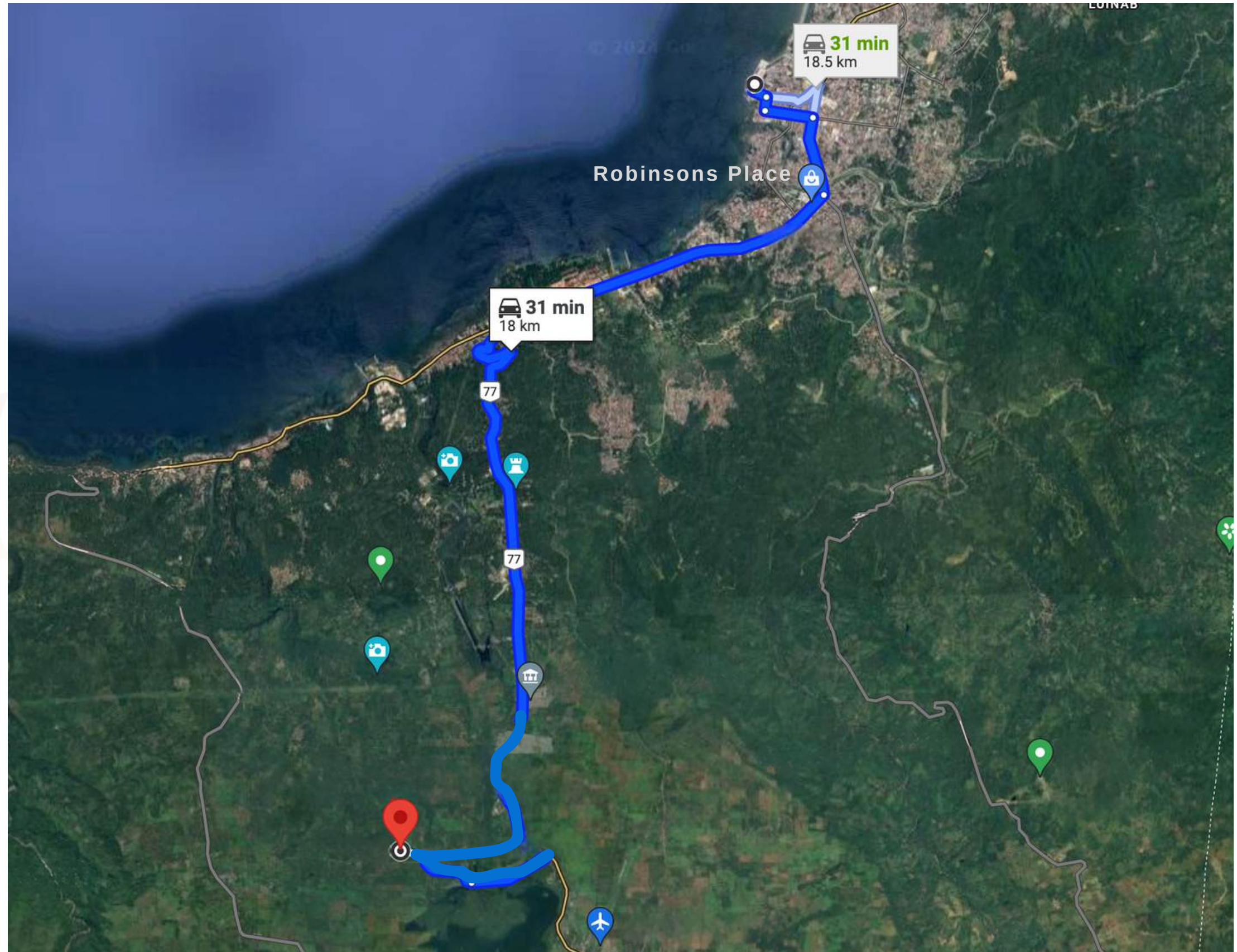
Land Area to City

 11 km



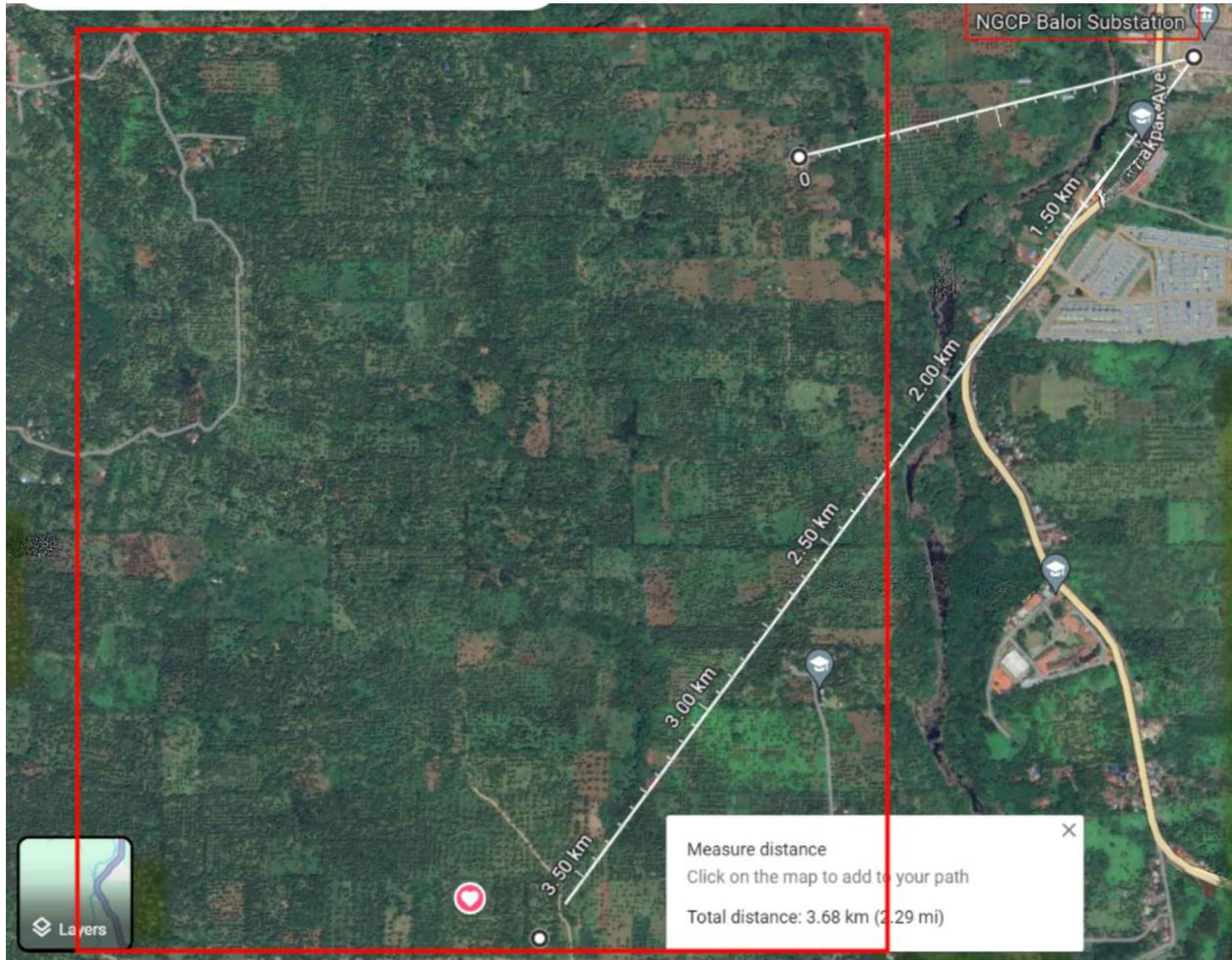
Land Area to Port

 18.5 km

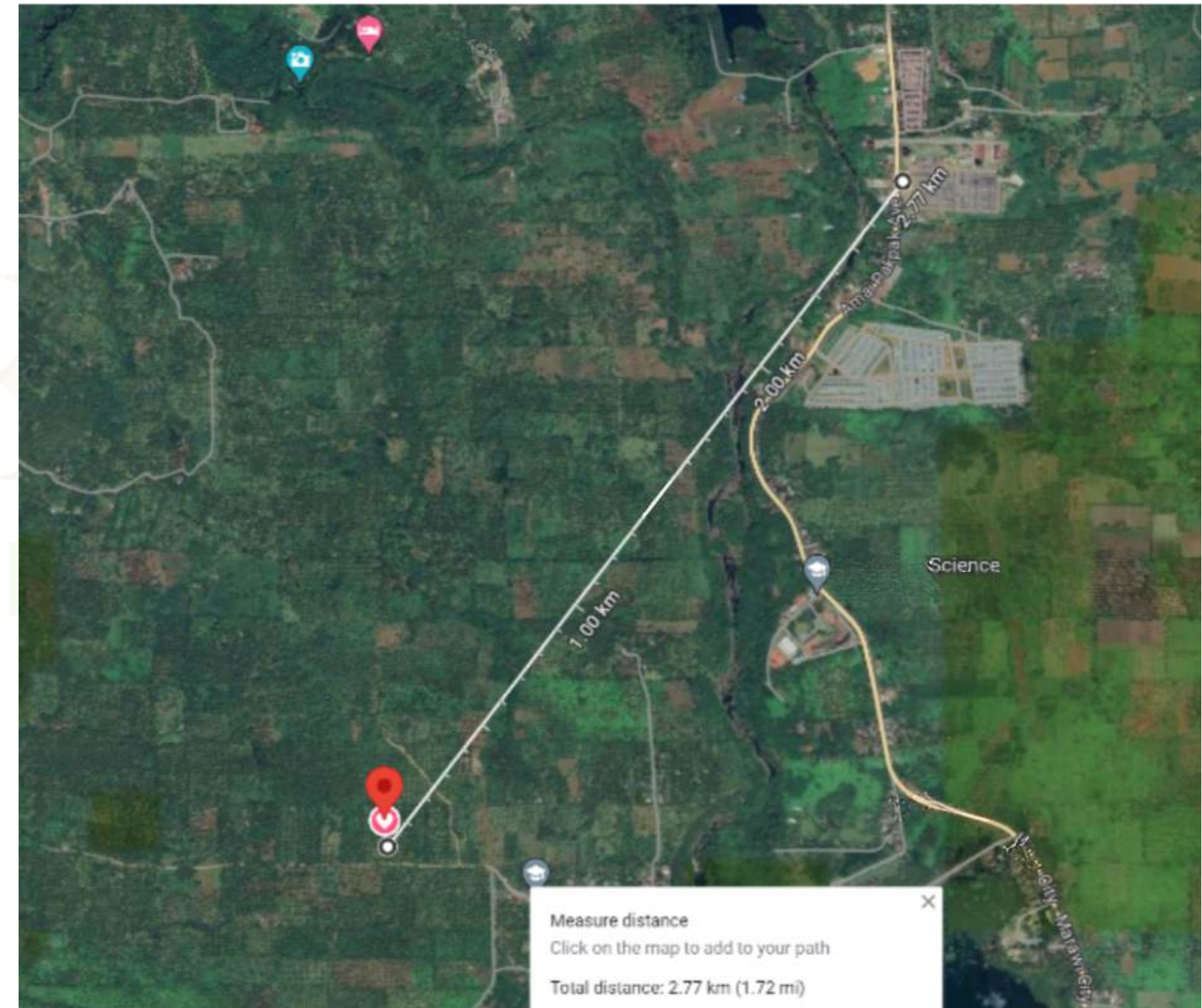


Site to NGCP Substation 1KM-2.7KM

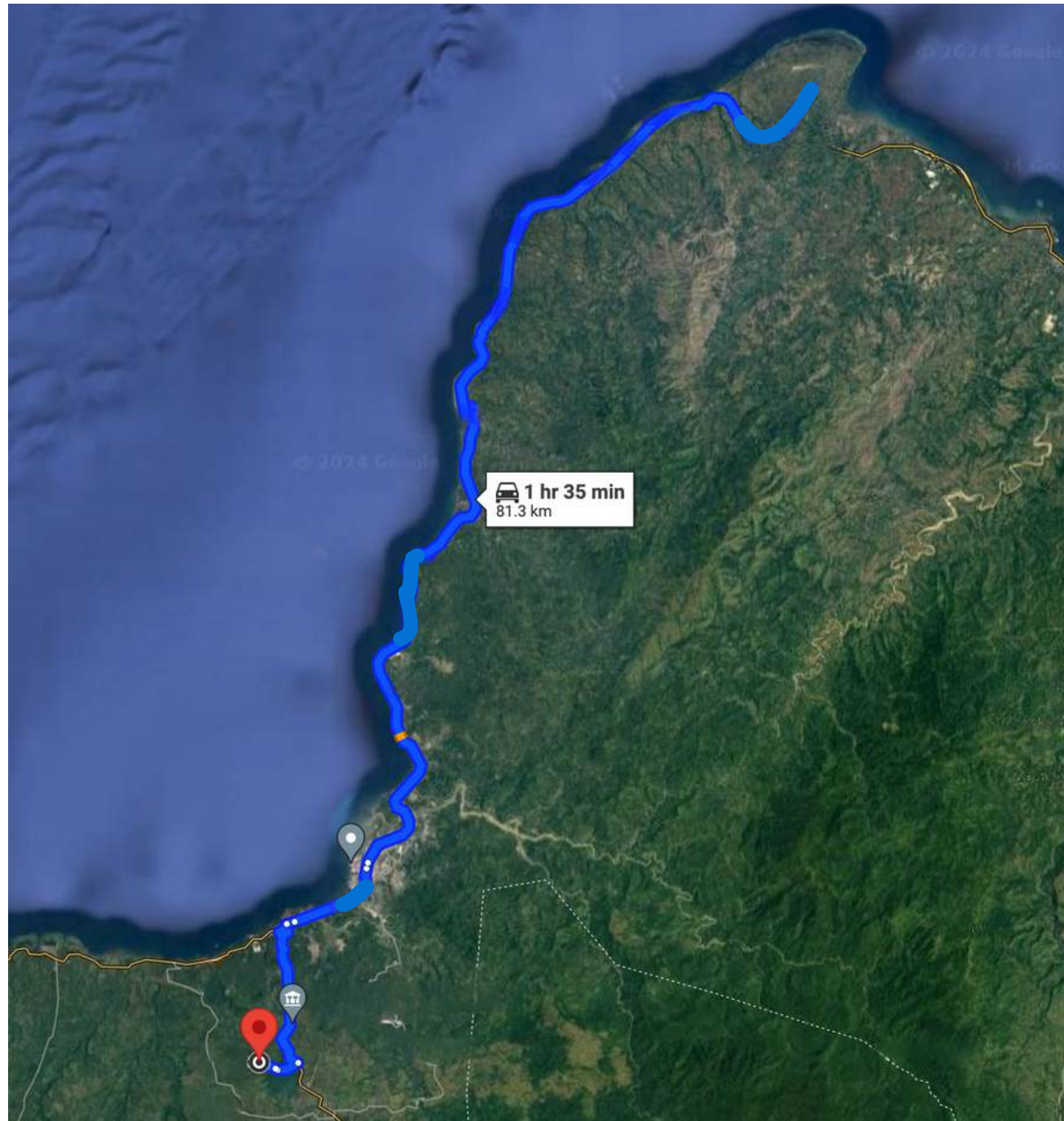
Land Area Coverage



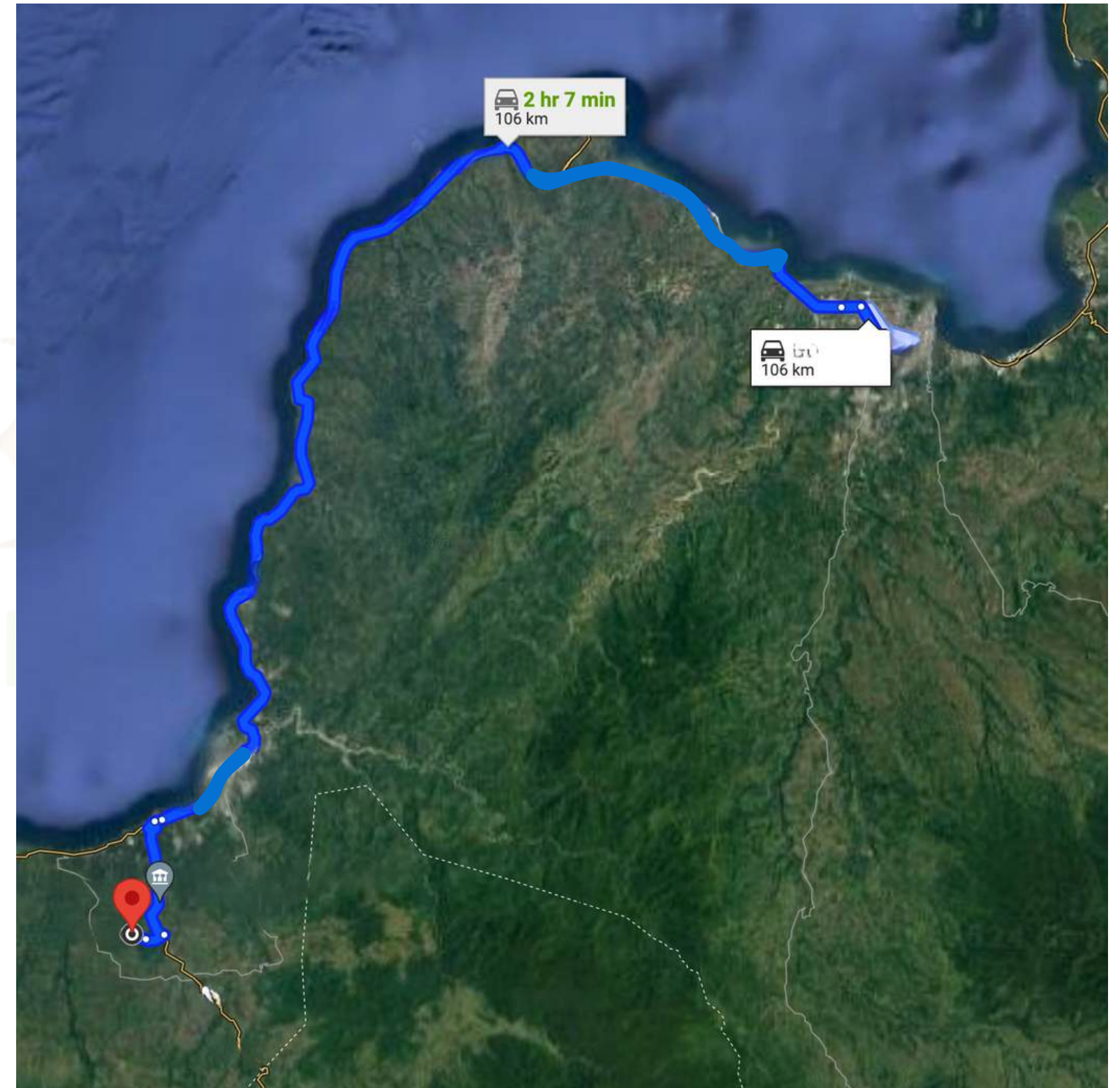
NGCP Substation



Site to Airport - 59 km



Site to City - 62 km



NEAR ESTABLISHMENTS	Measurement
Distance from National Power Corporation (NPC)	7 km.
Distance from National Grid Corporation of the Philippines	5.7 km.
Distance from National Resilience Council	22 km.
Distance from the Market	7 km.
Distance from POWER Source Company	24.9 km.
Distance from PILMICO	25.4 km.
Distance from seaport to area	20 km.
Distance from Adventist Medical Center Hospital	18 km.
Distance from nearest Mall	15 km.



LOT PROPOSED PRICE

PRICE IS NEGOTIABLE.

GOEGLER
ESTATE INCORPORATED



Thank You.



Phone

+63 9660518312 / +63 8888 031 90



Website

www.goeglerestateinc.com



goeglerestateincorporated@gmail.com