

Business Resiliency

Globally consistent, locally relevant, and integrated into daily behavior



Federal Protection Agency, INC is committed to keeping our services and operations running smoothly, so that we can provide you with the best service possible. It's our priority to identify — and mitigate — the technological, environmental, process and health risks that may get in the way of providing services to you. For this reason, we have created an integrated framework that lays out our mitigation, preparedness, response and recovery process.



Analyzing the Threat

Our process begins with identifying business situations and practices that can put Federal Protection Agency, INC at risk. Federal Protection Agency, INC's Risk Threat Assessment identifies threat probabilities, impact severity and risk levels for malicious activity, natural disasters, technical and human resource issues, and geographic and geopolitical factors. Our Business Impact Analysis examines critical Federal Protection Agency, INC business processes that can be affected by business disruption, such as critical functions within a business unit, but also client, financial, operational, legal and reputation impact and recovery time objectives.

Plan Development

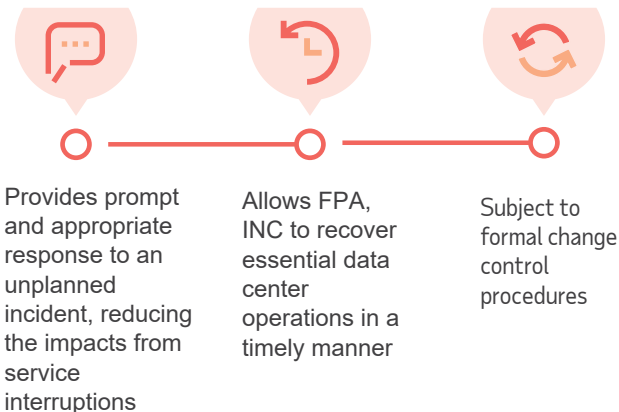
Business Continuity Planning

Federal Protection Agency, INC's Business Continuity Plans are developed to maintain or restore our operations after an interruption. When there's an unplanned disturbance that affects Federal Protection Agency, INC — a loss of critical services, building access or resources — our continuity plans will kick in to provide quick response and recovery.

Disaster Recovery Planning

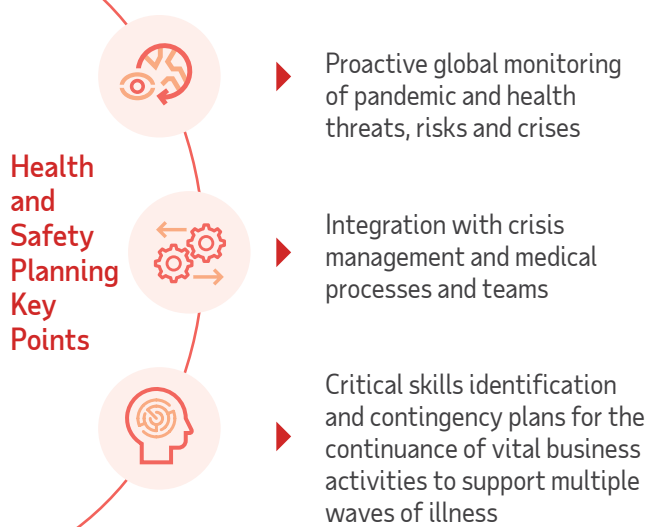
Federal Protection Agency, INC's Disaster Recovery Plans provide a thorough and organized approach to help get us back to business faster— maintaining or restoring critical systems, helping to avoid confusion and reducing the chance of more errors.

Our Business Continuity and Disaster Recovery Plans prepare us to respond when operations are affected.



Health and Safety Planning

As the basis for how we take action, FPA, INC's Health and Safety plans use the Pandemic Phases identified by the World Health Organization and severity levels and guidelines developed by the U.S. Centers for Disease Control.



Partnering with FPA, INC gives you the opportunity to focus on what matters: Your business and your success.

For more information about our services at FPA, INC visit:

www.Federal-Protection-Agency.us

Testing and Validation

Review

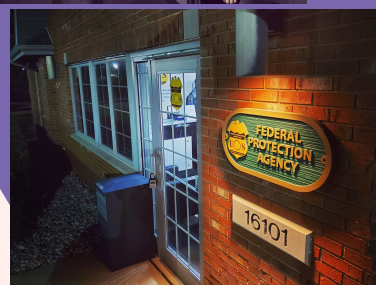
Periodic review of FPA, INC plans by various stakeholders

Exercise

- Test plans
- Simulation exercises
- Scenario planning
- Tabletop exercises

Revise

- Incorporation of revisions into plan

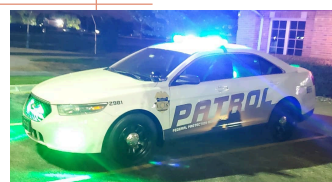
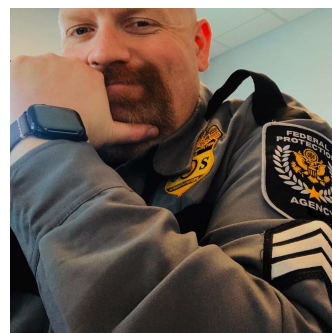


Real-World Response

Crisis Management & Emergency Response

Our framework was designed for flexibility so we can respond to incidents of any type, scope or complexity. It allows us to match the complexities and demands of incidents by scaling up or down as the crisis unfolds. FPA, INC uses the Federal Emergency Management Agency (FEMA) Incident Command System (ICS) methodology and industry best practices for Crisis Management and Emergency Response:

- Global monitoring for risk and threat identification 24/7/365
- Employee safety
- Proactive preparedness and planning based upon risk assessment
- Crisis communication processes
- Partnerships with local, state, federal, and international agencies
- Integration of facilities, equipment, personnel and procedures operating within our framework



The FPA, INC logo, FPA, INC - FEDERAL PROTECTION AGENCY, INC are trademarks of FPA, INC. All other marks are the property of their respective owners. Copyright © 2020 FPA, INC. ALL RIGHTS RESERVED.