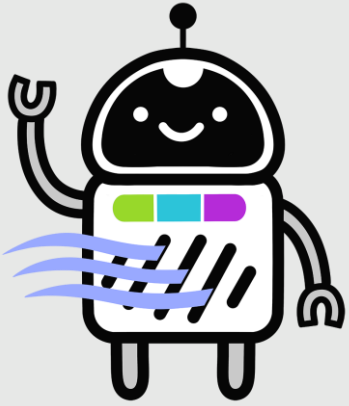


Schools engagement in SAMHE

Sarah West, Director and Researcher at SEI York





Schools'
Air quality
Monitoring for
Health &
Education

RESEARCH IN SCHOOLS
REQUIRES HIGH ETHICAL
STANDARDS & GOOD
GDPR PROTOCOLS

INITIAL
ENGAGEMENT

SAMHE monitors

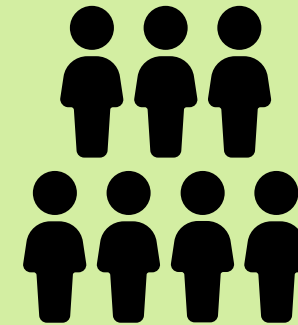
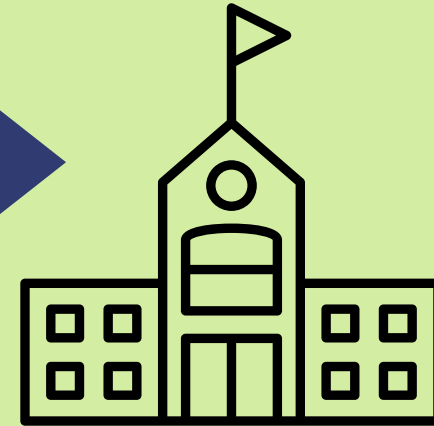
- WiFi smart monitors gifted to 2,000+ Schools
- Teachers and pupils empowered to monitor their schools' air quality (in-room & via internet)
- Monitors gather IAQ (Indoor Air Quality) data

SAMHE Web App



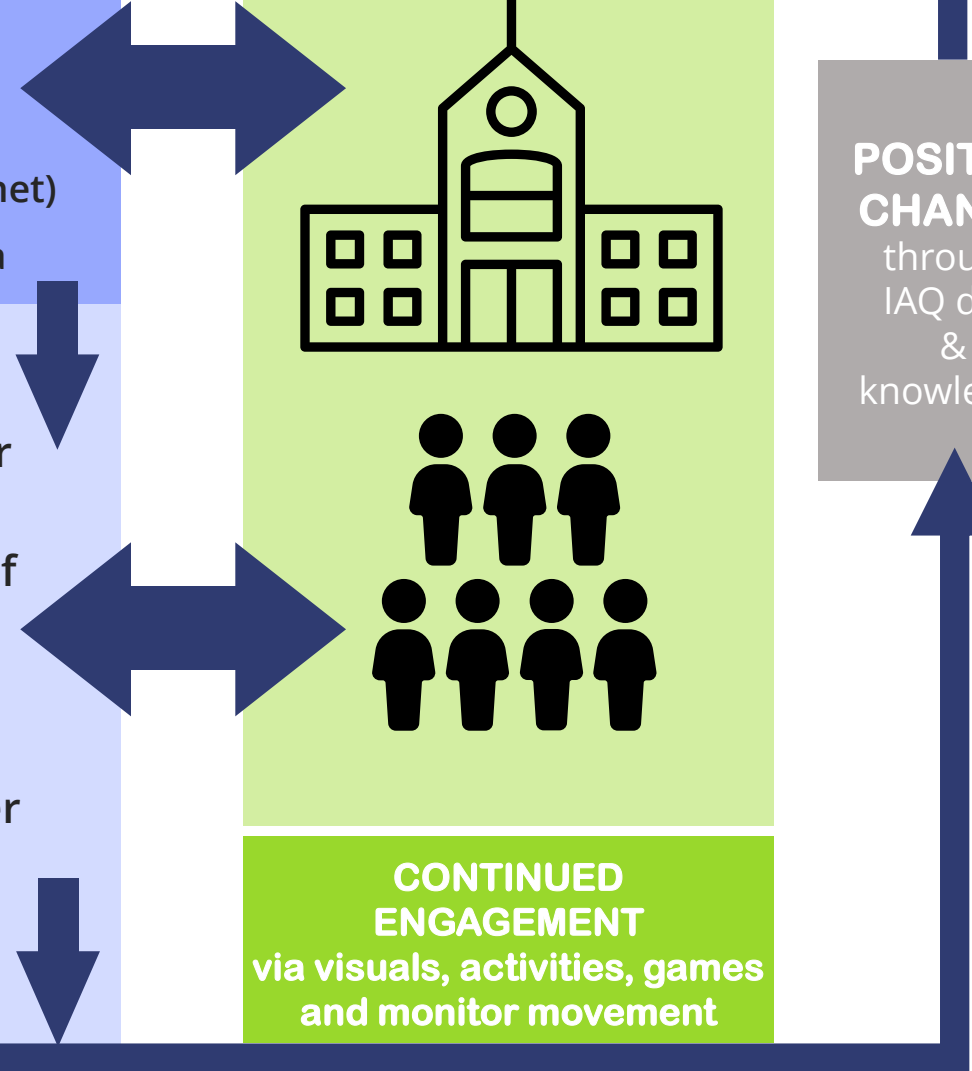
- Co-design with schools for success
- Interactive visualisation of IAQ data for schools
- Deliver engagement via citizen science and fun
- Support teaching & deliver learning
- IAQ intervention support and assessment

SCHOOL
COMMUNITIES



CONTINUED
ENGAGEMENT
via visuals, activities, games
and monitor movement

POSITIVE
CHANGE
through
IAQ data
&
knowledge



Co-design achievements

Worked with 20 schools in 3 groups: Teachers, Pupils (+teacher), Arkwright Scholars

- ✓ Designed logo
- ✓ Discussed websites for inspiration – decided clear information and content more important than a theme
- ✓ Learned about how SAMHE can fit into school activities
- ✓ Designed activities for the Web App
- ✓ Decided to use videos and quizzes



How SAMHE fits in

Schools want to use SAMHE in different ways:

- Science / STEM / Eco club – regular activities
- Specific aspects of curriculum e.g. data logging, thinking scientifically
- Enrichment exercises (whole school or particular classes) e.g. career pathways, environmental citizenship

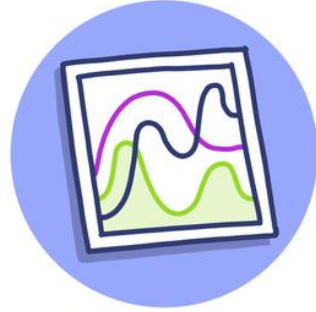


The SAMHE Web App

Will prompt pupils to do 8 kinds of activities:



ENVIRONMENT ACTION



ANALYSIS



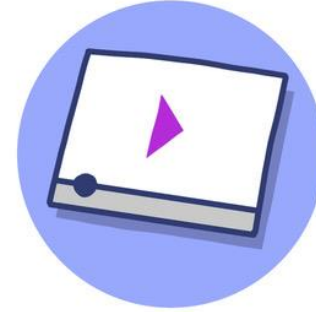
CREATIVE



FOLLOW LINK



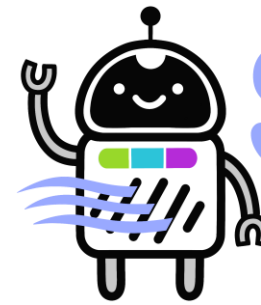
PEOPLE ACTION



WATCH VIDEO



DATA ENTRY



SAMHE

Maintaining engagement

Ongoing engagement is critical. How will we do this?

- Badges will reward engagement
- Videos and quizzes to maintain interest
- Lots of content – links to other resources
- Curriculum signposting for teachers
- Recommended activities tailored to pupils prior activities



SAMHE Timeline

Apr 2022
May - July 2022
July - Oct 2022
Nov 2022 - Jan 2023
Feb 2023
Mar 2023 - Aug 2024

Forming a team and getting funding

A group of interested researchers get together and come up with the idea for SAMHE. They apply for funding and are given money to run the project by the Department for Education and the Engineering and Physical Sciences Research Council (EPSRC).



Planning

The team comes up with lots of ideas about how the project could support schools and how we can best use the air quality data from the monitors. Then we narrow them down to the ones we think are most important.



Creating the Web App

Our web developers build the Web App, using the ideas from co-design schools and the team.



Improving the Web App

Our web developers add to and adapt the Web App using the feedback from pioneer schools.



Scientists learn more about air quality in schools

Our scientists study the data coming in from all the school air quality monitors. We share our results with the UK government, schools and other organisations who can use them to make schools healthier places for learning.



Schools' involvement



Co-design with schools



Pupils and teachers from 22 schools meet with us to help answer key questions about what the interactive Web App should look like and how it should work, so that it is fun and useful for schools.

Beta testing with schools



100+ schools which have agreed to be 'pioneer schools' receive SAMHE air quality monitors and help us test the Web App.

Launch of SAMHE!



We send out SAMHE air quality monitors to 1000+ schools all over the UK. Thanks to the help from co-design and pioneer schools, we now have a brilliant Web App that schools can use to see and interact with the data from their monitor.

SAMHE Web App keeps getting better

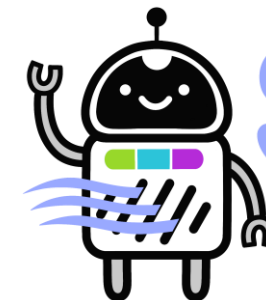


Schools using SAMHE let us know how it is working for them and give us ideas for new activities for the Web App and other ways to make it better. Our web developers continue to add to and improve it.

22 Co-design Schools – recruited via personal contacts, prior projects, email / phone

100 Pioneer Schools – recruiting as above plus via mailing lists

1000+ Schools – recruiting ?



SAMHE

Thank you



SAMHEProject

www.samhe.org.uk/contact

