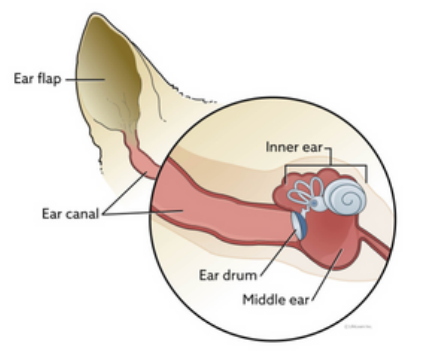
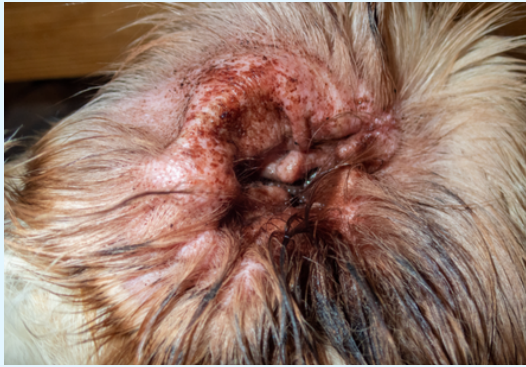
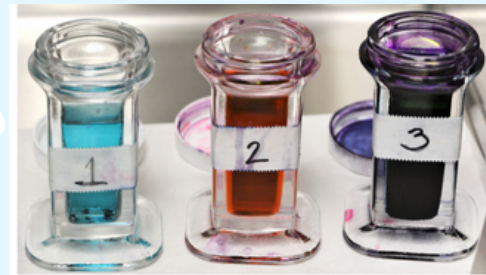


# EAR CYTOLOGY

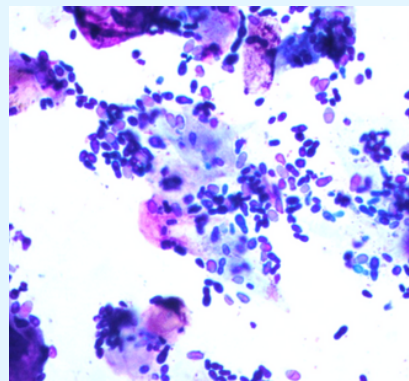
Why? To determine what type of ear infection your pet has, an ear cytology is performed. A cytology is a quick evaluation underneath the microscope. Takes about 5-10 minutes and quick results.



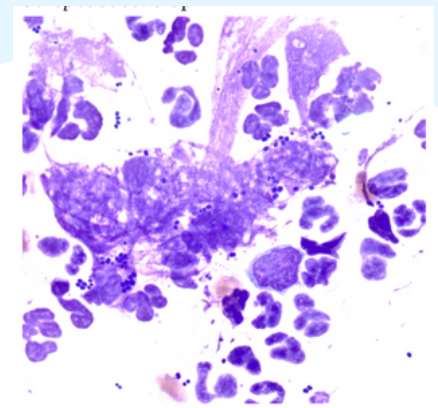
## EAR INFECTION AND EAR ANATOMY



## PREPARING SLIDE AND STAIN



YEAST



BACTERIA = COCCI



BACTERIA = RODS

Medications and a treatment plan is developed based on the findings and type of infection. Recheck is ideal to ensure infection cleared.