



# TLC PROCESSING FOR HOME

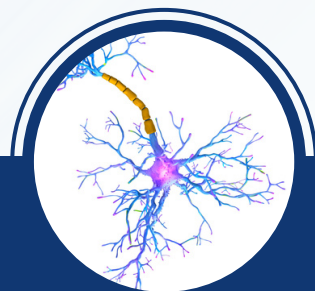
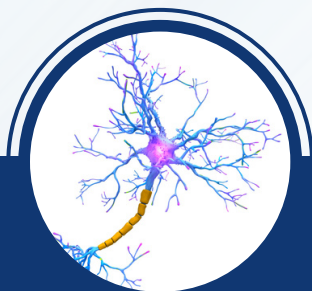
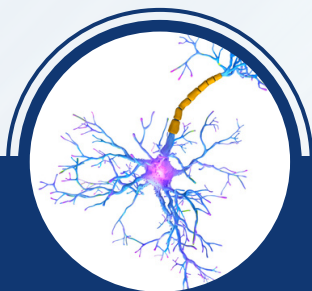
---

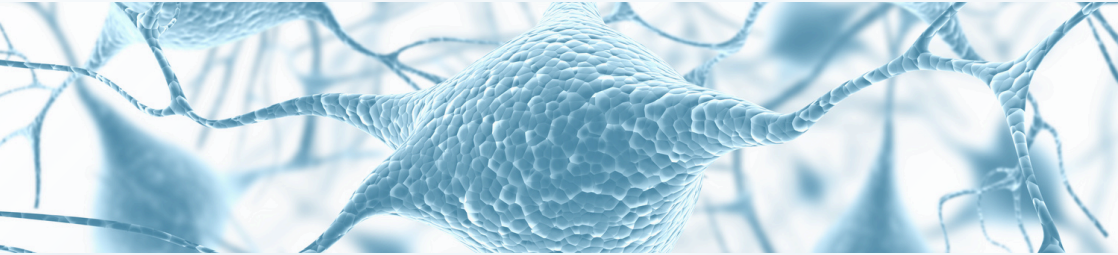
BUILDING STRONG FOUNDATIONS FOR EVERY LEARNER



# TABLE OF CONTENTS

What is Cognitive Processing Training?	3
How does it work?	4
Who is this program for?	5
TLC Processing for Home programs	6
How much does it cost?	7
What equipment do I need?	8
Meet the Team	9
Contact Information	10





## WHAT IS COGNITIVE PROCESSING TRAINING?

Processing skills form the foundation of all learning. Skills such as working memory, visual processing, auditory processing, logic and reasoning, and processing speed work together to process new information across all subject areas. When processing skills are insufficient, students may struggle to retain newly acquired information and retrieve previously learned material.



Cognitive Processing Training is an evidence-based approach that uses targeted interventions to strengthen processing skills and solidify the foundational steps of learning.

Through a range of processing activities and assessment tools, this program helps build neural connections that lead to lasting cognitive benefits, fostering confident and independent learners.

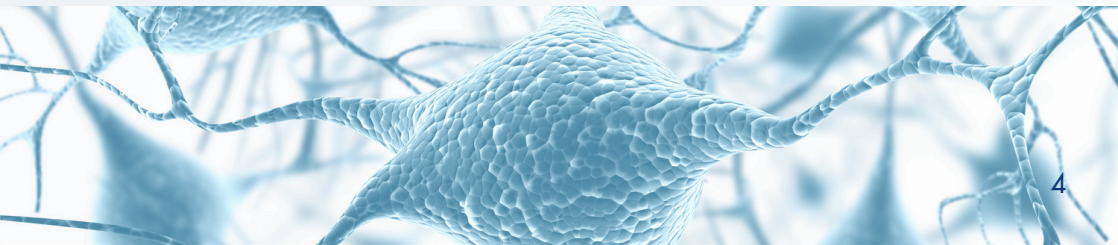


## HOW DOES IT WORK?

Training in processing resembles a cognitive exercise regimen for the brain. By engaging in targeted exercises and maintaining a regular practice routine, one can refine critical timing skills, leading to enhanced focus, accelerated information processing, improved memory, and better strategic planning abilities.

Initial assessments serve as the foundation for crafting a personalized program tailored to your needs. Regular assessments throughout the program ensure steady progress, allowing for adjustments when necessary.

By using evidence-based training and assessment tools, this program focuses on training the brain, resulting in lasting cognitive benefits and creating confident, independent learners.







## WHO IS THIS PROGRAM FOR?



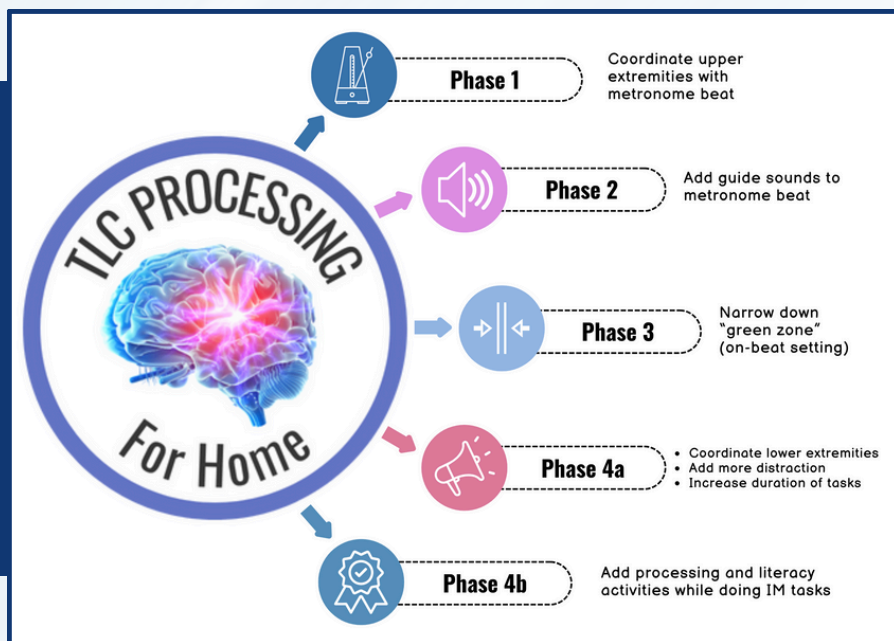
Whether students are facing the challenges listed below or aiming to achieve new academic milestones, this program is designed to help every child reach their academic goals through research-backed methods!

- ADHD
- Autism
- Dyslexia
- Developmental delays
- Speech/Language issues
- Learning disabilities
- Developmental Coordination Disorder
- Sensory Processing Disorder
- Auditory Processing Disorder

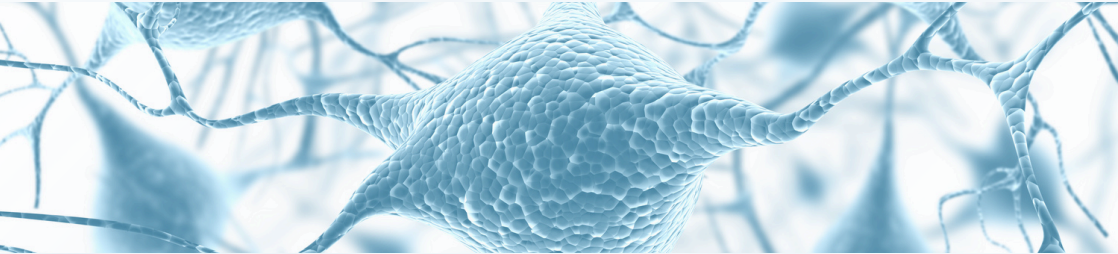


# TLC PROCESSING FOR HOME PROGRAMS

All of our home-based programs are designed to strengthen processing skills that are vital for academic growth. Students will train with processing techniques designed to build a strong foundations for all types of learning. Improved word retrieval, enhanced ability to focus on multiple stimuli, and improved auditory processing skills are some of the results both children and adults have experienced with our programs.



Our Purely Processing program strengthens cognitive skills like memory and attention, while our Processing to Literacy program combines processing development with reading and spelling support. Both programs feature personalized exercises, expert guidance, and progress monitoring to ensure measurable results.



## HOW MUCH DOES IT COST?

### REGISTRATION FEE

**\$549**

Includes:

- Equipment (shipping & tax included)
- Setup Support
- Pre and Post Assessments

### PURELY PROCESSING

**\$455/mo**

Includes:

- Weekly data analysis
- Ongoing support from expert trainer
- Train with processing techniques

**\$425/child  
family discount**

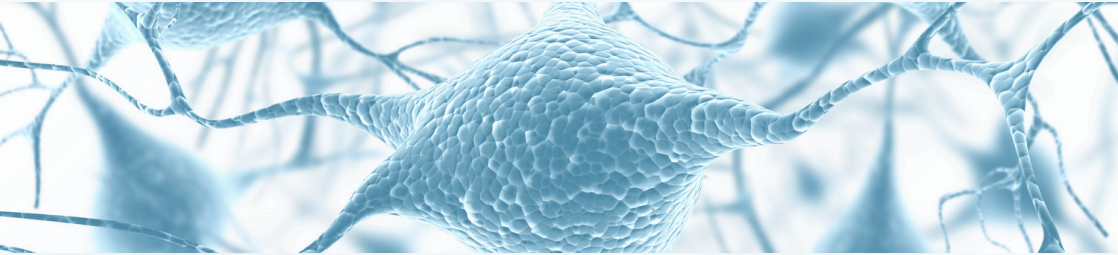
### PROCESSING TO LITERACY

**\$455/mo**

Includes:

- Weekly data analysis
- Ongoing support from expert trainer
- Train with processing and literacy techniques
- Graduate to a full structured literacy program upon program completion

**\$425/child  
family discount**



## NOT READY TO JUMP IN?

### TAKE A PROCESSING ASSESSMENT!

Our Processing Skills Assessment gives you the answers you need before diving in! You'll get:

- **The Gibson Test of Cognitive Skills** and **RAN/RAS** assessments used to measure processing skills in the areas of:
  - Auditory & Visual Working Memory
  - Visual Processing
  - Logic & Reasoning
  - Processing Speed
  - Auditory Processing
  - English Word Attack skills
- 30-60 min., virtual setting
- Written report w/ personalized recommendations
- \$149 per assessment
  - \$50 non-refundable deposit due upon scheduling
  - \$99 balance due prior to testing

***If your results say our processing program is the right fit,  
we'll knock \$49 off your registration fee!***





# WHAT EQUIPMENT DO I NEED?

## Windows-based PC

- Operating system - Windows 10, 64-bit
- Processor - Intel Core i5 or AMD Ryzen 5
- Processor Speed - 3.0GHz
- RAM - 4GB
- Internet Connection - 56Kbps modem or faster

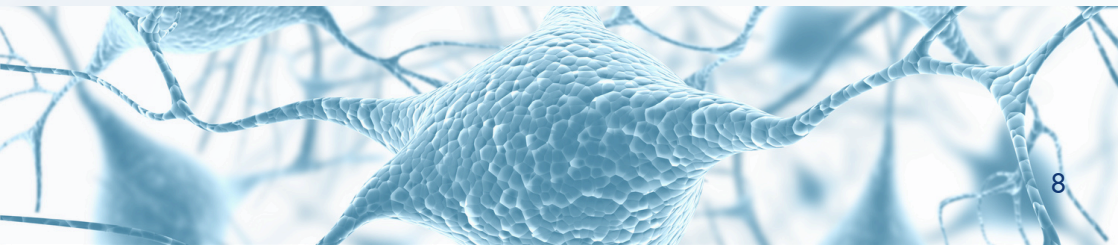


## Apple-based Mac

- Operating system - macOS 10.15
- Processor - Intel i5 or Apple M1
- Processor Speed - 3.0GHz
- RAM - 4GB
- Internet Connection - 56Kbps modem or faster

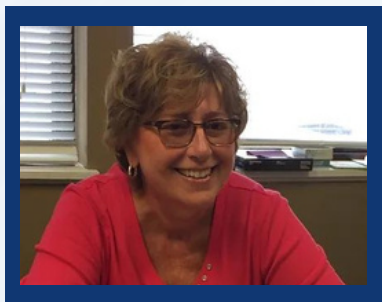
## Not compatible with:

- Chromebook
- Android devices
- iOS devices





## MEET THE TEAM



**Bonnie Nicks**  
**CCC-MS, SLDS, IMC**  
TLC Processing Owner



**Christina Ables**  
**MS, SLDS, IMC**  
TLC Processing Program Director



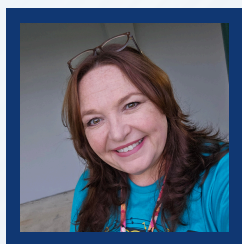
**Diane Lavin**  
**BS, CALT, SLDS, IMC**  
TLC Processing  
Trainer



**Emily Vanyur**  
**MA, IMC**  
TLC Processing  
Trainer



**Loni McCloud**  
**BA, SLDS, IMC**  
TLC Processing  
Trainer



**Anne Hamlet**  
**BS, IMC**  
TLC Processing  
Trainer



# CONTACT INFORMATION



270-904-1675 Bonnie  
352-403-2002 Christina



[www.tlcprocessing.com](http://www.tlcprocessing.com)



[bonnie.nicks@tutoringroom.com](mailto:bonnie.nicks@tutoringroom.com)  
[christina@tutoringroom.com](mailto:christina@tutoringroom.com)

We'd love to hear from you! Whether you have questions about our programs, need more information, or want to get started, we're here to help.



## TLC PROCESSING

*A signature program of The Learning Center, LLC*