

ELECTRIC POWER CONSTRUCTION

PRODUCT

CATALOG

2023



BEIJING CUTTER-LIU TECHNOLOGY CO., LTD.

www.cutter-liu.com



ABOUT US



*A family owned business,
full of Creativity and Passion.*

Founder & Chairman:

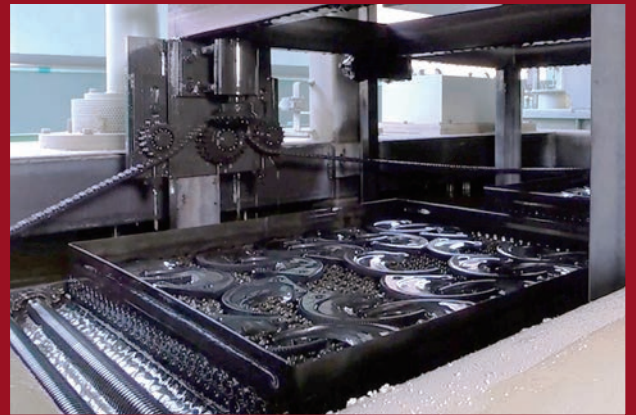
Mr. Liu

A handwritten signature in black ink, appearing to be '刘佳记' (Liu Jia Ji).

Founded in 2008, Beijing Cutter-Liu Technology specializes in the development, production and sales of professional cutting tools and knives. Our products are widely used in electric power industry, emergency rescuing, agriculture and forestry, and recycling industry. As a pioneer manufacturer of cable cutting, stripping, and crimping tools in China, Cutter-Liu's competency lies in constant improvements and innovations in metal processing and heat-treatment technology. This has led to numbers of patents, China's National High-tech Enterprise certification, and an indisputable position of leadership in our field.

For over a decade, we have been guided by the motto, "**A Brand Built on Quality.**" Cutter-Liu has grown stable, long-term cooperative relationships to world-renowned companies in Russia, Brazil, Australia and Europe. Such business links enable us to accumulate extensive ODM & OEM experience and to absorb up-to-date developing concepts. Aiming at nothing less than growing into a well-respected brand that is proudly "Made in China," Cutter-Liu fosters a spirit of craftsmanship, embraces creativity, and is always full of passion. We look forward to becoming a valued partner and friend that your business can trust and rely upon.

Leading Technology
in-house **Heat Treatments**
& a wide range of proven processes



Automated hardening shop
Strong production capacity



Uniform hardness
Lower risk of fracture



Less distortion with
thin components



Ideal Bainitizing or Martensitic
hardening processes



Reduce most stresses
in the material



New Product

ESG-50

Battery-operated **Gear-driven** Cutter
for Armored Cu and Al Cable

Specifications:

Cutting Range: Armored Cu / Al cable
max. Φ 50 mm

Battery: 14.4 V Li-ion

Dimensions: 290 x 190 x 110 mm

Net Weight: 2.1 kg

Key features:

- Suitable for cutting in narrow working space. Less in weight compared with hydraulic cutters. Easy one-hand operation.
- Precision and durable gear-driven mechanism brings consistent cutting force output. Easy forward and reverse operation at any time during cutting.
- Closed-jaw style provides higher cutting capacity. Built-in overload protection circuit.
- Package includes one 4.0 Ah 14.4 V Lithium-ion batteries, one quick charger, and a PP plastic case.



New Product

ESG-54S

Battery-operated **Gear-driven** Cutter
for Armored Cu / Al Cable and **ACSR**

Specifications:

Cutting Range: Low-voltage Cu / Al cable
max. Φ 50 mm
ACSR max. 630 mm²

Battery: 14.4 V Li-ion

Dimensions: 340 x 210 x 110 mm

Net Weight: 3.0 kg



EST-30MC

New Product

Battery-operated **Mini** Hydraulic Cutter for Cu / Al Cable and **ACSR**

Specifications:

Cutting Range:	Single-core Cu / Al cable max. Φ 30 mm ACSR max. 240 mm ²
Output Force:	60 kN
Stroke:	22 mm
Battery:	18 V Li-ion
Dimensions:	410 x 90 x 85 mm
Net Weight:	2.8 kg

Key features:

- Suitable for cutting in narrow working space. Less in weight compared with tradition pistol style hydraulic cutters. 2 LED lights illuminate darker working area.
- Easy one-hand operation due to balanced center of gravity. Built-in microchip controller, all data can be easily read.
- Open-jaw style allows for easy cable insertion and positioning. Cutting head 360° rotatable.
- Automatic blade retraction when operation is complete. Manual retract at any time during cutting.
- Package includes one 2.0 Ah 18 V Lithium-ion batteries, one quick charger, and a PP plastic case.



EST-32L

New Product

Battery-operated **Mini** Hydraulic Cutter for Cu / Al Cable

Specifications:

Cutting Range:	Single-core Cu / Al cable max. Φ 32 mm
Output Force:	15 kN
Stroke:	27 mm
Battery:	18 V Li-ion
Dimensions:	380 x 90 x 85 mm
Net Weight:	2.3 kg



ES-45 Battery-operated Hydraulic Cutter for Armored Cu / Al and **Steel** Cable

Specifications:

Cutting Range:	Cu / Al cable and ACSR max. Φ 45 mm EHS guy wire and ground rod max. Φ 12 mm
Output Force:	60 kN
Rated Pressure:	700 bar
Battery:	18 V Li-ion
Dimensions:	450 x 260 x 70 mm
Net Weight:	5.5 kg

Key features:

- Optimized 2-stage hydraulic system provides faster feed and power stroke than previous generation.
- External LCD screen, cutting times can be easily read. A LED light illuminates darker working area.
- Flip top style, closed-jaw with bolt interlock provide higher cutting capacity. Cutting head 360° rotatable.
- Automatic blade retraction when operation is complete. Manual retract at any time during cutting.
- Package includes one 4.0 Ah 18 V Lithium-ion batteries, one quick charger, and a PP plastic case.



ES-55 Battery-operated Hydraulic Cutter for Armored Cu / Al and **Steel** Cable

Specifications:

Cutting Range:	Cu / Al cable and ACSR max. Φ 55 mm EHS guy wire and ground rod max. Φ 22 mm
Output Force:	120 kN
Rated Pressure:	700 bar
Battery:	18 V Li-ion
Dimensions:	510 x 280 x 70 mm
Net Weight:	8.3 kg



ES-50 Battery-operated Hydraulic Cutter for Armored Cu / Al Cable

Specifications:

Cutting Range:	Armored Cu / Al cable max. Φ 50 mm
Output Force:	60 kN
Rated Pressure:	700 bar
Battery:	18 V Li-ion
Dimensions:	440 x 280 x 70 mm
Net Weight:	4.2 kg



ES-85 Battery-operated Hydraulic Cutter for Armored Cu / Al Cable

Specifications:

Cutting Range:	Armored Cu / Al cable max. Φ 85 mm
Output Force:	60 kN
Rated Pressure:	700 bar
Battery:	18 V Li-ion
Dimensions:	550 x 280 x 70 mm
Net Weight:	6.7 kg



ES-105 Battery-operated Hydraulic Cutter for Armored Cu / Al Cable

Specifications:

Cutting Range:	Armored Cu / Al cable max. Φ 105 mm
Output Force:	120 kN
Rated Pressure:	700 bar
Battery:	18 V Li-ion
Dimensions:	640 x 280 x 90 mm
Net Weight:	10.7 kg



ES-105C Open-jaw

Battery-operated Hydraulic Cutter
for Armored Cu / Al Cable

Specifications:

Cutting Range:	Armored Cu / Al cable max. Φ 105 mm
Output Force:	120 kN
Rated Pressure:	700 bar
Battery:	18 V Li-ion
Dimensions:	640 x 280 x 90 mm
Net Weight:	10.4 kg

Key features:

- Optimized 2-stage hydraulic system provides faster feed and power stroke than previous generation.
- External LCD screen, cutting times can be easily read. A LED light illuminates darker working area.
- Automatic blade retraction when operation is complete. Manual retract at any time during cutting.
- Package includes one 4.0 Ah 18 V Lithium-ion batteries, one quick charger, and a PP plastic case.



ES-MM36

Battery-operated Hydraulic Nut Splitter

Specifications:

Cutting Range:	Long blade: M8 - M14 nut Medium blade: M14 - M20 nut Short blade: M18 - M24 nut
Output Force:	100 kN
Rated Pressure:	700 bar
Battery:	18 V Li-ion
Dimensions:	450 x 260 x 70 mm
Net Weight:	6.0 kg

- Cutting head with tilt angle for easier nut splitting, 360° rotatable. Hexagon and C type holder available.
- Suitable for working at height on poles and towers. Cutting time around 10 seconds.

HS-45



HS-55



HS-50



HS-85



Key features:

- 2-stage hydraulic system with fast feed and power stroke. Manual retract at any time during cutting.
- Flip top style, closed-jaw with bolt interlock provide higher cutting capacity. Cutting head 360° rotatable.

Specifications:

	HS-45	HS-55	HS-50	HS-85
Cutting Range:	Cu / Al cable and ACSR max. Φ 45 mm EHS guy wire and ground rod max. Φ 12 mm	Cu / Al cable and ACSR max. Φ 55 mm EHS guy wire and ground rod max. Φ 22 mm	Armored Cu / Al cable max. Φ 50 mm	Armored Cu / Al cable max. Φ 85 mm
Output Force:	60 kN	120 kN	60 kN	60 kN
Rated Pressure:	700 bar	700 bar	700 bar	700 bar
Dimensions:	580 x 170 x 80 mm	610 x 170 x 85 mm	560 x 170 x 80 mm	690 x 190 x 85 mm
Net Weight:	5.5 kg	7.0 kg	3.9 kg	6.4 kg
Packing:	Plastic case	Plastic case	Plastic case	Plastic case

PS-30C**Open-jaw****PS-45****PS-55****PS-55D****Dual circuit****Key features:**

- Powered by single-acting hydraulic pump. Special hardened blades are ACSR rated. Also suitable for round material made of Cu, Al and steel.
- Flip top style, closed-jaw(except PS-30C) with bolt interlock provide higher cutting capacity.

Specifications:

	PS-30C	PS-45	PS-55	PS-55D
Cutting Range:	Single-core Cu / Al cable max. 300 mm ² ACSR max. 240 mm ²	Cu / Al cable and ACSR max. Φ 45 mm EHS guy wire and ground rod max. Φ 12 mm	Cu / Al cable and ACSR max. Φ 55 mm EHS guy wire and ground rod max. Φ 22 mm	Cu / Al cable and ACSR max. Φ 55 mm EHS guy wire and ground rod max. Φ 22 mm
Output Force:	45 kN	60 kN	120 kN	120 kN
Rated Pressure:	700 bar	700 bar	700 bar	700 bar
Dimensions:	360 x 100 x 70 mm	360 x 100 x 70 mm	400 x 130 x 80 mm	470 x 150 x 70 mm
Net Weight:	3.0 kg	3.8 kg	5.5 kg	4.5 kg
Packing:	Canvas bag	Canvas bag	Canvas bag	Canvas bag

PS-50



PS-85



PS-105



PS-120



Key features:

- Powered by single-acting hydraulic pump. Suitable for cutting Cu and Al cables with steel tape or wire armor.
- Flip top style, closed-jaw with bolt interlock provide higher cutting capacity.

Specifications:

	PS-50	PS-85	PS-105	PS-120
Cutting Range:	Armored Cu / Al cable max. Φ 50 mm	Armored Cu / Al cable max. Φ 85 mm	Armored Cu / Al cable max. Φ 105 mm	Armored Cu / Al cable max. Φ 120 mm
Output Force:	60 kN	60 kN	120 kN	100 kN
Rated Pressure:	700 bar	700 bar	700 bar	700 bar
Dimensions:	360 x 100 x 70 mm	470 x 150 x 70 mm	540 x 200 x 90 mm	620 x 210 x 100 mm
Net Weight:	2.3 kg	4.1 kg	7.5 kg	11.0 kg
Packing:	Canvas bag	Canvas bag	Plastic case	Plastic case

PS-132

Hydraulic Cutting Head for Armored Cu / Al Cable

Specifications:

Cutting Range:	Armored Cu / Al cable max. Φ 132 mm
Output Force:	100 kN
Rated Pressure:	700 bar
Dimensions:	660 x 240 x 100 mm
Net Weight:	12.0 kg
Packing:	Plastic case



PS-170

Heavy-duty **Double-acting Cylinder** Hydraulic Cutting Head for Armored Cu / Al Cable

Specifications:

Cutting Range:	Armored Cu / Al cable max. Φ 160 mm
Output Force:	300 kN
Rated Pressure:	700 bar
Dimensions:	970 x 340 x 150 mm
Net Weight:	95.0 kg
Packing:	Wooden case



PS-40F

C-type Hydraulic Cutting Head for **Flat Copper Wire** of Transformer

Specifications:

Cutting Range:	Flat Copper Wire max. Φ 40 mm
Output Force:	60 kN
Rated Pressure:	700 bar
Dimensions:	360 x 100 x 70 mm
Net Weight:	3.0 kg
Packing:	Canvas bag



ESI-35kV-120

Remote Insulated Hydraulic Cutting System

Specifications:

Cutting Range:	Armored Cu / Al cable max. Φ 120 mm
Output Force:	100 kN
Rated Pressure:	700 bar
Battery:	(2) 14.4 V Li-ion
Reservior Capacity:	0.6 L
Total Net Weight:	15.0 kg
Packing:	Al alloy case



Key features:

- 35kV insulating rated. For cutting armored Cu and Al cables when not sure it's live or not. Each set is certified by an authoritative third lab before shipping.
- Wireless remote control up to 15 meters. Insulated oil hose up to 10 meters. Completely no contact to ensure safety.
- Battery-operated hydraulic pump. Suitable for working area without power supply.
- Automatic blade retraction when operation is complete. Manual retract at any time during cutting.

ESI-35kV-132

Remote Insulated Hydraulic Cutting System

Specifications:

Cutting Range:	Armored Cu / Al cable max. Φ 132 mm
Output Force:	100 kN
Rated Pressure:	700 bar
Battery:	(2) 18 V Li-ion
Reservior Capacity:	0.7 L
Total Net Weight:	21.4 kg
Packing:	Al alloy case



ESI-10kV-105

Insulated Hydraulic Cutting System

Specifications:

Cutting Range:	Armored Cu / Al cable max. Φ 105 mm
Output Force:	120 kN
Rated Pressure:	700 bar
Battery:	18 V Li-ion
Reservior Capacity:	0.2 L
Total Net Weight:	10.0 kg
Packing:	Al alloy case



Key features:

- 10kV insulating rated. For cutting armored Cu and Al cables when not sure it's live or not. Each set is certified by an authoritative third lab before shipping.
- Insulated oil hose up to 10 meters. Battery-operated hydraulic pump with 2-stage hydraulic system, provides fast feed and power stroke. Suitable for working area without power supply.
- Automatic blade retraction when operation is complete. Manual retract at any time during cutting.

HSI-35kV-132

Insulated Hydraulic Cutting System

Specifications:

Cutting Range:	Armored Cu / Al cable max. Φ 132 mm
Output Force:	100 kN
Rated Pressure:	700 bar
Reservior Capacity:	1.0 L
Total Net Weight:	20.5 kg
Packing:	Al alloy case



Key features:

- 35kV insulating rated. For cutting armored Cu and Al cables when not sure it's live or not. Each set is certified by an authoritative third lab before shipping.
- Insulated oil hose up to 10 meters. Foot & hand pump with dual speed piston.
- Internal safety valve automatically release pressure when reaches rated pressure. Manual retract at any time during cutting.

ESP-30

Remote Cable spiking System



Specifications:

Output Force:	30 kN
Puncturing Diameter:	160 mm
Puncturing Depth:	55 mm
Dimensions:	450 x 230 x 160 mm
Net Weight:	8.0 kg
Packing:	Al alloy case

Key features:

- Light weight and easy to carry. Steel nail spiking head, easy to replace.
- Powered by Li-ion battery, convenient to use.
- Wireless remote control up to 20 meters, safety assured.

ESP-150

Remote Cable spiking System



Specifications:

Output Force:	150 kN
Puncturing Diameter:	135 mm
Puncturing Depth:	55 mm
Net Weight:	18.0 kg
Packing:	Al alloy case

Key features:

- 15 tons hydraulic cylinder provides strong spiking force. High strength alloy steel spiking head can be used repeatedly.
- Wireless remote control up to 15 meters. Insulated oil hose up to 10 meters. Completely no contact to ensure safety.
- Battery-operated hydraulic pump. Suitable for working area without power supply.

J35S

All-round One-handed Ratcheting Cutter

Specifications:

Cutting Range: Low-voltage armored Cu / Al cable max. Φ 32 mm
ACSR max. 240 mm²
Steel Rod max. Φ 6 mm

Dimensions: 255 x 110 x 35 mm

Net Weight: 0.8 kg



• ACSR



Single steel wire max. Φ 2 mm

• Armored Cu / Al Cable



Low-voltage cables (1kV) only

• Steel Rod



Mild steel only

• Stainless Steel Pipe & Tube



max. Wall thickness 2 mm

• Chain



max. Φ 4 mm

• Wood Stick



⚠ For cutting material not listed above, please confirm with us first.

J40S

All-round Compact Ratcheting Cutter

Specifications:

Cutting Range: Low-voltage armored Cu / Al cable max. Φ 38 mm
ACSR max. 400 mm²
Steel Rod max. Φ 10 mm

Dimensions: 360 x 110 x 40 mm

Net Weight: 1.3 kg



1000V Insulating Handle Version Available



J40E **Telescopic Handles**

One-handed Ratcheting **Cu / Al** Cable Cutter

Specifications:

Cutting Range: Armored Cu / Al cable
max. Φ 45 mm (500 mm²)

Dimensions: 235/310 x 135 x 45 mm

Net Weight: 1.2 kg



J35

One-handed Ratcheting **Cu / Al** Cable Cutter

Specifications:

Cutting Range: Armored Cu / Al cable
max. Φ 32 mm (300 mm²)

Dimensions: 255 x 110 x 35 mm

Net Weight: 0.7 kg



J52

One-handed Ratcheting **Cu / Al** Cable Cutter

Specifications:

Cutting Range: Armored Cu / Al cable
max. Φ 52 mm (500 mm²)

Dimensions: 300 x 150 x 40 mm

Net Weight: 1.1 kg



J55

Telescopic Handles**Heavy-duty** Ratcheting **Cu / Al** Cable Cutter**Specifications:**

Cutting Range: Armored Cu / Al cable
max. Φ 55 mm (500 mm²)

Dimensions: 390/550 x 150 x 60 mm

Net Weight: 3.3 kg



J75

Telescopic Handles**Heavy-duty** Ratcheting **Cu / Al** Cable Cutter**Specifications:**

Cutting Range: Armored Cu / Al cable
max. Φ 70 mm (4x120 mm²)

Dimensions: 415/575 x 205 x 55 mm

Net Weight: 3.7 kg



J95

Telescopic Handles**Heavy-duty** Ratcheting **Cu / Al** Cable Cutter**Specifications:**

Cutting Range: Armored Cu / Al cable
max. Φ 90 mm (4x185 mm²)

Dimensions: 440/605 x 250 x 60 mm

Net Weight: 5.1 kg



J100 Telescopic Handles

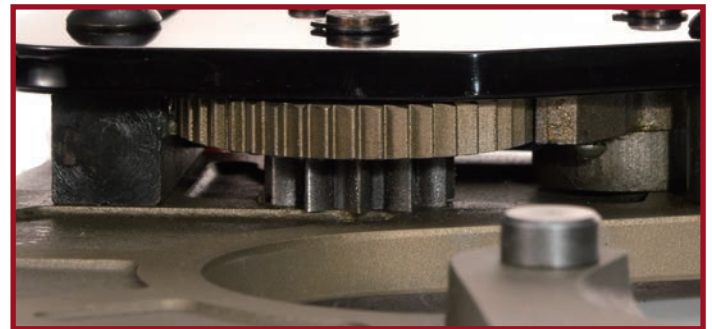
Heavy-duty Ratcheting Cu / Al Cable Cutter

Specifications:

Cutting Range:	Armored Cu / Al cable max. Φ 100 mm (3x300 mm ²)
Dimensions:	465/625 x 270 x 65 mm
Net Weight:	6.7 kg



- Single edge chop-cutting concept. Minimizes distortion on cross section of big size cables.



- Die-forged driving gears can bear stronger cutting resistance while saving labor.



J130 Telescopic Handles

Heavy-duty Ratcheting Cu / Al Cable Cutter

Specifications:

Cutting Range:	Armored Cu / Al cable max. Φ 120 mm (4x300 mm ²)
Dimensions:	510/670 x 330 x 65 mm
Net Weight:	8.7 kg

J13 Heavy-duty Ratcheting Steel Cable Cutter

Telescopic Handles



J25 Heavy-duty Ratcheting Steel Cable Cutter

Telescopic Handles



Specifications:

Cutting Range: ACSR max. 720 mm²
EHS guy wire and ground rod max. Φ 13 mm
Mild steel rebar max. Φ 10 mm
Stainless steel tube max. 32 mm

Dimensions: 345/505 x 125 x 45 mm

Net Weight: 2.1 kg

ACSR max. 800 mm²
EHS guy wire and ground rod max. Φ 20 mm
Mild steel rebar max. Φ 16 mm
Stainless steel tube max. 38 mm

Dimensions: 385/550 x 135 x 60 mm

Net Weight: 3.2 kg

J30 Heavy-duty Ratcheting Steel Cable Cutter

Telescopic Handles



J50 Heavy-duty Ratcheting Steel Cable Cutter

Telescopic Handles



Specifications:

Cutting Range: ACSR max. 720 mm²
EHS guy wire and ground rod max. Φ 16 mm
Mild steel rebar max. Φ 12 mm
Stainless steel tube max. 34 mm

Dimensions: 400/570 x 160 x 60 mm

Net Weight: 3.7 kg

ACSR max. 1440 mm²
EHS guy wire and ground rod max. Φ 18 mm
Mild steel rebar max. Φ 14 mm
Stainless steel tube max. 48 mm

Dimensions: 395/555 x 150 x 60 mm

Net Weight: 3.3 kg

J14 Heavy-duty Ratcheting Wire Rope Cutter

Telescopic Handles



J20 Heavy-duty Ratcheting Wire Rope Cutter

Telescopic Handles



Specifications:

Cutting Range: Steel wire rope and aircraft cable
max. Φ 20 mm
Low-voltage armored Cu / Al cable
max. Φ 30 mm

Dimensions: 345/505 x 125 x 45 mm

Net Weight: 2.1 kg

Steel wire rope and aircraft cable
max. Φ 22 mm
Low-voltage armored Cu / Al cable
max. Φ 34 mm

Dimensions: 400/570 x 160 x 60 mm

Net Weight: 3.7 kg

J26 Heavy-duty Ratcheting Wire Rope Cutter

Telescopic Handles



J26C Industrial Ratcheting Wire Rope Cutter



Specifications:

Cutting Range: Steel wire rope and aircraft cable
max. Φ 26 mm
Low-voltage armored Cu / Al cable
max. Φ 38 mm

Dimensions: 385/550 x 135 x 60 mm

Net Weight: 3.2 kg

Steel wire rope and aircraft cable
max. Φ 26 mm
Low-voltage armored Cu / Al cable
max. Φ 38 mm

Dimensions: 740 x 140 x 50 mm

Net Weight: 4.1 kg



New Product

ECT-1510Battery-operated **Mini** Hydraulic Crimper

Specifications:

Crimping Force:	15 kN
Stroke:	10 mm
Crimping Range:	0.75 - 16 mm ²
Battery:	18 V Li-ion
Dimensions:	350 x 90 x 85 mm
Net Weight:	2.1 kg

Key features:

- Suitable for cutting in narrow working space. Less in weight compared with tradition pistol style hydraulic cutters. 2 LED lights illuminate darker working area.
- Easy one-hand operation thanks to balanced center of gravity. Built-in microchip controller, audible signals indicate a good crimp for quality assurance.
- Flip top style, crimping head 360° rotatable.
- Automatic pressure release when operation is complete. Manual release at any time during crimping.
- Package includes one 2.0 Ah 18 V Lithium-ion batteries, one quick charger, and a PP plastic case.



New Product

ECT-150Battery-operated **Mini** Hydraulic Crimper

Specifications:

Crimping Force:	35 kN
Stroke:	10 mm
Crimping Range:	10 - 150 mm ²
Battery:	18 V Li-ion
Dimensions:	345 x 90 x 85 mm
Net Weight:	2.2 kg



New Product Universal Tool

ECT-240

Battery-operated **Mini** Hydraulic Crimper

Specifications:

Crimping Force:	60 kN
Stroke:	30 mm
Crimping Range:	16 - 240 mm ²
Cutting Range:	Cu / Al / ACSR max. Φ 25 mm
Battery:	18 V Li-ion
Dimensions:	415 x 95 x 85 mm
Net Weight:	3.3 kg

Key features:

- Suitable for cutting in narrow working space. Less in weight compared with tradition pistol style hydraulic cutters. 2 LED lights illuminate darker working area.
- Easy one-hand operation thanks to balanced center of gravity. Built-in microchip controller, audible signals indicate a good crimp for quality assurance.
- Flip top style, crimping head 360° rotatable.
- Automatic pressure release when operation is complete. Manual release at any time during crimping.
- Package includes one 2.0 Ah 18 V Lithium-ion batteries, one quick charger, and a PP plastic case.



New Product

ECT-300

Battery-operated **Mini** Hydraulic Crimper

Specifications:

Crimping Force:	60 kN
Stroke:	17 mm
Crimping Range:	50 - 300 mm ²
Battery:	18 V Li-ion
Dimensions:	355 x 95 x 85 mm
Net Weight:	2.9 kg



EC-300

Battery-operated Hydraulic Crimper

Specifications:

Crimping Force:	60 kN
Stroke:	17 mm
Crimping Range:	50 - 300 mm ²
Battery:	18 V Li-ion
Dimensions:	290 x 280 x 70 mm
Net Weight:	4.2 kg

Key features:

- Optimized 2-stage hydraulic system provides faster feed and power stroke than previous generation. Crimping head 360° rotatable.
- External LCD screen, crimping times can be easily read. A LED light illuminates darker working area.
- Automatic pressure release when operation is complete(except EC-630). Manual release at any time during crimping.
- Package includes one 4.0 Ah 18 V Lithium-ion batteries, one quick charger, and a PP plastic case.



EC-300D

Dieless

Battery-operated Hydraulic Crimper

Specifications:

Crimping Force:	60 kN
Stroke:	32 mm
Crimping Range:	max. 300 mm ²
Battery:	18 V Li-ion
Dimensions:	400 x 280 x 80 mm
Net Weight:	5.2 kg

- Quad-point indent crimping. No change of crimping dies required.
- Three movable indenting nibs push connectors against the top fixed nib. As a result, four indentations are made into the connector.



EC-60MX **Universal Tool**

Battery-operated Hydraulic Crimper

Specifications:

Crimping Force:	60 kN
Crimping Range:	50 - 300 mm ²
Cutting Range:	Cu / Al / ACSR max. Φ 40 mm
Battery:	18 V Li-ion
Dimensions:	430 x 280 x 80 mm
Net Weight:	4.5 kg



EC-400

C-head

Battery-operated Hydraulic Crimper

Specifications:

Crimping Force:	120 kN
Stroke:	42 mm
Crimping Range:	50 - 400 mm ²
Battery:	18 V Li-ion
Dimensions:	440 x 280 x 70 mm
Net Weight:	6.8 kg



EC-630

Battery-operated Hydraulic Crimper

Specifications:

Crimping Force:	150 kN
Stroke:	50 mm
Crimping Range:	max. 630 mm ²
Battery:	18 V Li-ion
Dimensions:	510 x 280 x 80 mm
Net Weight:	9.5 kg

HCT-185



HCT-300



HCT-300D

Dieless



HCT-400

C-head



Key features:

- 2-stage hydraulic system with fast feed and power stroke.
- Automatic pressure release when operation is complete. Manual release at any time during crimping.
- Crimping head 360° rotatable(180° for HCT-300D). Suitable for all working angles.
- PP plastic carrying case, tough and anti-impact.

Specifications:

	HCT-185	HCT-300	HCT-300D	HCT-400
Crimping Force:	50 kN	60 kN	60 kN	120 kN
Stroke:	15 mm	17 mm	32 mm	42 mm
Crimping Range:	10 - 185 mm ²	50 - 300 mm ²	max. 300 mm ²	70 - 400 mm ²
Dimensions:	370 x 130 x 60 mm	500 x 170 x 70 mm	600 x 170 x 70 mm	560 x 170 x 70 mm
Net Weight:	2.0 kg	3.8 kg	4.8 kg	6.1 kg



HC-431

Hand-operated Hydraulic Crimper

Specifications:

Crimping Force:	120 kN
Stroke:	31 mm
Crimping Range:	50 - 300 mm ²
Dimensions:	670 x 170 x 90 mm
Net Weight:	6.2 kg

Key features:

- 2-stage hydraulic system with fast feed and power stroke.
- Twist the moving handle for manual pressure release at any time during crimping.
- C-shaped crimping head allows for easy cable positioning and removal. 180° rotatable, suitable for all working angles.
- PP plastic carrying case, tough and anti-impact.



HC-510C

Hand-operated Hydraulic Crimper

Specifications:

Crimping Force:	120 kN
Stroke:	31 mm
Crimping Range:	50 - 300 mm ²
Dimensions:	670 x 170 x 90 mm
Net Weight:	6.2 kg

PC-300

Hydraulic Crimping Head



Specifications:

Crimping Force:	60 kN
Stroke:	17 mm
Crimping Range:	50 - 300 mm ²
Dimensions:	380 x 200 x 70 mm
Net Weight:	2.5 kg
Packing:	Canvas bag

Key features:

- Powered by single-acting hydraulic pump(except PC-300D). Equipped with quick coupler for easy disassembly.
- Flip top or C-head style allow for easy cable positioning and removal.

PC-300D **Dieless**

Hydraulic Crimping Head



Specifications:

Crimping Force:	60 kN
Stroke:	17 mm
Crimping Range:	50 - 300 mm ²
Dimensions:	380 x 200 x 70 mm
Net Weight:	2.5 kg
Packing:	Canvas bag

- Quad-point indent crimping. No change of crimping dies required.
- Powered by double-acting hydraulic pump.

PC-400 **C-head****Hydraulic Crimping Head****Specifications:**

Crimping Force:	120 kN
Stroke:	42 mm
Crimping Range:	70 - 400 mm ²
Dimensions:	360 x 130 x 90 mm
Net Weight:	5.5 kg
Packing:	Canvas bag

PC-400D **Dieless****Hydraulic Crimping Head****Specifications:**

Crimping Force:	180 kN
Crimping Range:	max. 400 mm ²
Dimensions:	500 x 160 x 80 mm
Net Weight:	11.2 kg
Packing:	Canvas bag

PC-610 **C-head****Hydraulic Crimping Head****Specifications:**

Crimping Force:	150 kN
Stroke:	50 mm
Crimping Range:	max. 500 mm ²
Dimensions:	400 x 130 x 70 mm
Net Weight:	6.8 kg
Packing:	Canvas bag / Steel case

PC-25**PC-45****Key features:**

- Powered by single-acting hydraulic pump. U-type crimping head for easy cable positioning and removal.
- Light weight, suitable for overhead line work.

PC-60**PC-60A**

- Flip top head can be rotated and quickly opened for middle and end crimping operations.
- Suitable for 110kV-220kV transmission line.

Specifications:

	PC-25	PC-45	PC-60	PC-60A
Crimping Force:	250 kN	450 kN	600 kN	600 kN
Stroke:	20 mm	20 mm	38.5 mm	42 mm
Crimping Range:	max. 630 mm ²	max. 800 mm ²	Cu max. 60 mm Steel max. 26 mm	Cu max. 60 mm Steel max. 26 mm
Dimensions:	360 x 130 x 130 mm	270 x 220 x 130 mm	320 x 270 x 160 mm	450 x 240 x 220 mm
Net Weight:	5.5 kg	11.0 kg	25.0 kg	20.0 kg
Packing:	Canvas bag	Canvas bag	Steel case	Steel case



PC-100

Hydraulic Crimping Head

Specifications:

Crimping Force:	1000 kN
Stroke:	22 mm
Crimping Range:	Cu max. 76 mm Steel max. 36 mm
Dimensions:	365 x 280 x 180 mm
Net Weight:	31.0 kg
Packing:	Steel case

Key features:

- Powered by double-acting hydraulic pump. Double-action cylinder for faster piston retraction.
- Suitable for crimping tension sleeves of 110 kV overhead line conductors, and 220 kV underground cables.



PC-200

Hydraulic Crimping Head

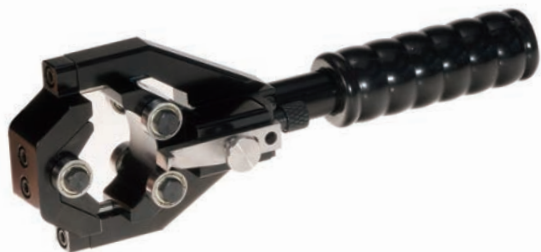
Specifications:

Crimping Force:	2000 kN
Stroke:	40 mm
Crimping Range:	Cu max. 100 mm Steel max. 50 mm
Dimensions:	450 x 400 x 230 mm
Net Weight:	85.0 kg
Packing:	Steel case

- Suitable for crimping tension sleeves of 500 kV overhead line conductors, and 220 kV underground cables.

BX40

Semi-con and Main Insulation Layer Stripper for XLPE Cables



Specifications:

Applied For:	MV cables with dia. 22 - 38 mm
Cutting Depth:	max. 10 mm
Dimensions:	240 x 85 x 60 mm
Net Weight:	0.6 kg
Packing:	Plastic case



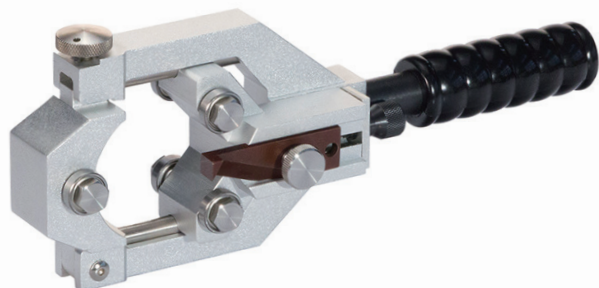
- Knife “A” for stripping **main insulation layer**.



- Knife “B” for stripping **non-peelable semiconductor layer**.

KBX65

Semi-con and Main Insulation Layer Stripper for XLPE Cables

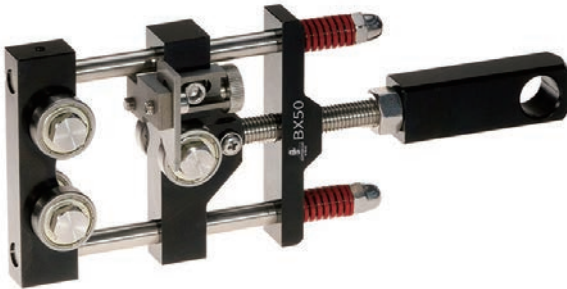


Specifications:

Applied For:	MV and HV cables with dia. 35 - 65 mm
Cutting Depth:	max. 20 mm
Dimensions:	300 x 117 x 66 mm
Net Weight:	1.4 kg
Packing:	Plastic case

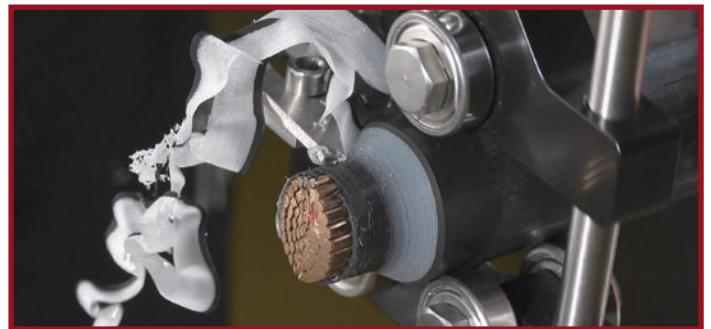
BX50

Semi-con and Main Insultation Layer Stripper for XLPE Cables



Specifications:

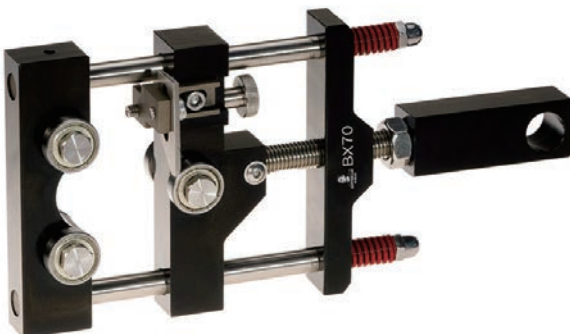
Applied For:	MV cables with dia. 22 - 45 mm
Cutting Depth:	max. 8 mm
Dimensions:	240 x 100 x 55 mm
Net Weight:	0.9 kg
Packing:	Plastic case



- A single blade can strip both semi-con and main insulation layer of the cable. Chamfering at the same time.

BX70

Semi-con and Main Insultation Layer Stripper for XLPE Cables



Specifications:

Applied For:	MV and HV cables with dia. 38 - 68 mm
Cutting Depth:	max. 10 mm
Dimensions:	275 x 135 x 60 mm
Net Weight:	1.5 kg
Packing:	Carring bag

BX90 Semi-con and Main Insulation Layer Stripper for XLPE Cables



Specifications:

Applied For:	MV and HV cables with dia. 35 - 90 mm
Cutting Depth:	max. 20 mm
Dimensions:	500 x 145 x 75 mm
Net Weight:	2.7 kg
Packing:	Plastic case

BX150 Semi-con and Main Insulation Layer Stripper for XLPE Cables

Specifications:

Applied For:	MV and HV cables with dia. 75 - 150 mm
Cutting Depth:	max. 30 mm
Dimensions:	585 x 205 x 90 mm
Net Weight:	3.7 kg
Packing:	Carring bag



PG-6 Semi-con and Main Insulation Layer Stripper for XLPE Cables



Specifications:

Applied For:	MV and HV cables with dia. 60 - 128 mm
Cutting Depth:	max. 20 mm
Net Weight:	3.7 kg
Packing:	Carton



CST640

Peelable Semi-con Layer Stripper for 10kV Cables

Specifications:

Applied For: Cables with dia. 16 - 41 mm

Cutting Depth: max. 2 mm

- Cutting depth can be adjusted at any time during working.
- Replaceable blades. Plastic case packing.

CST235 Non-peelable Semi-con Layer Stripper for 35kV Cables

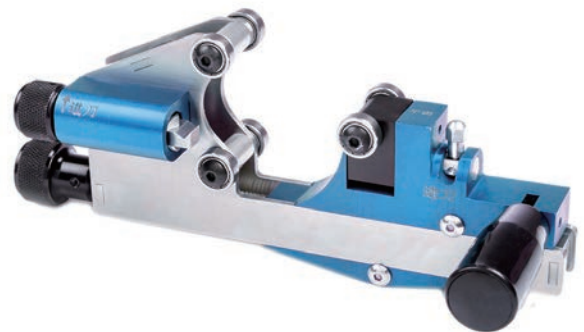
Specifications:

Applied For: Cables with dia. 30 - 54 mm

Cutting Depth: max. 1.5 mm

Net Weight: 0.6 kg

- One-direction stripping. Cutting depth can be adjusted at any time during working.
- Chamfering at the same time.
- Replaceable blades. Plastic case packing.



CST531 Main Insulation Layer Stripper for 10 - 35 kV Cables

Specifications:

Applied For: Cables with dia. 15 - 55 mm

Cutting Depth: max. 15 mm

Net Weight: 0.7 kg

- Helical and circular cutting. Replaceable blade with adjustable angles.
- Ideal for narrow working area. Plastic case packing.





BX30

Insulation Layer Stripper for Overhead(ABC) Cables

Specifications:

Applied For:	ABC and MV cables with dia. 15 - 30 mm
Cutting Depth:	max. 6 mm
Dimensions:	275 x 75 x 50 mm
Net Weight:	0.7 kg
Packing:	Plastic case

Key features:

- Suitable for stripping from the end or center of cables.
- Cutting depth can be adjusted to avoid touching with conductor.
- Replaceable blades.



NP-400

Insulation Layer Stripper for Overhead(ABC) Cables

Specifications:

Applied For:	ABC and MV cables with dia. 10 - 32 mm
Cutting Depth:	max. 3 mm
Dimensions:	200 x 80 x 50 mm
Net Weight:	0.6 kg
Packing:	Carring bag

GBX720

Aluminum Conductor Wire Stripper for ACSR



ACSR-1250

Aluminum Conductor Wire Stripper for ACSR



Specifications:

Standard Dies:	240 mm ² / 300 mm ² / 400 mm ² / 630 mm ² / 720 mm ²	1250 mm ² / 1440 mm ²
Net Weight:	3.3 kg	2.5 kg
Packing:	Carring bag	Plastic case

CST622**Outer Sheath Stripper****KBX45****Specifications:**

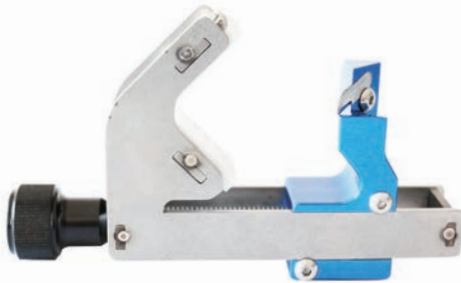
Cutting Depth:	5 mm	2.5 mm
Dimensions:	150 x 60 x 15 mm	245 x 72 x 75 mm
Net Weight:	0.4 kg	0.6 kg
Packing:	Carring bag	Plastic case

PG-110**Al Bellows Stripper****PG-220****Specifications:**

Applied For:	Cables with dia. 50 - 110 mm	Cables with dia. 110 - 160 mm
Cutting Depth:	5 mm	5 mm

CST240

35kV Main Insulation Chamfering Tool



Specifications:

Applied For:	Cables with dia. 15 - 60 mm	Cables with dia. 32 - 54 mm
Chamfer Size:	3 x 45°	3 x 45°
Net Weight:	0.2 kg	0.2 kg
Packing:	Plastic case	Plastic case

CST335



CST310

10kV Main Insulation Chamfering Tool



Specifications:

Applied For:	Cables with dia. 18 - 32 mm
Chamfer Size:	3 x 45°
Net Weight:	0.2 kg
Packing:	Plastic case



HP-700A

Hand-operated Hydraulic Pump

Specifications:

Reservoir Capacity:	0.72 L
Rated Pressure:	700 bar
Oil Output at High Pressure:	2.26 cc / stroke
Oil Output at Low Pressure:	12.26 cc / stroke
Dimensions:	660 x 180 x 130 mm
Net Weight:	9.6 kg
Packing:	Carton

Key features:

- Dual speed piston for rapid output.
- Internal safety valve, automatic pressure release when reaches rated pressure.
- 2 meters hydraulic hose attached.



FHP-700

Foot & Hand-powered Hydraulic Pump

Specifications:

Reservoir Capacity:	1.0 L
Rated Pressure:	700 bar
Oil Output at High Pressure:	2.26 cc / stroke
Oil Output at Low Pressure:	12.26 cc / stroke
Dimensions:	580 x 210 x 180 mm
Net Weight:	8.6 kg
Packing:	Carton



EP-700

Battery-operated Hydraulic Pump

Specifications:

Reservoir Capacity:	0.2 L
Rated Pressure:	700 bar
Battery:	18 V Li-ion
Hose Length:	0.6 m
Dimensions:	380 x 290 x 70 mm
Net Weight:	4.0 kg
Packing:	Plastic case

Key features:

- Battery-operated hydraulic pump with 2-stage pumping action, provides fast feed and power stroke. Suitable for working area without power supply.
- External LCD screen, using times can be easily read. A LED light illuminates darker working area.
- Automatic pressure release when operation is complete. Manual retract at any time during operation. Attached with pressure gauge for pressure display.



PB-700

Battery-operated Hydraulic Pump

Specifications:

Reservoir Capacity:	0.7 L
Rated Pressure:	700 bar
Battery:	(2) 18 V Li-ion
Oil Output at High Pressure:	0.2 L / min
Oil Output at Low Pressure:	1.3 L / min
Hose Length:	2.0 m
Dimensions:	380 x 290 x 70 mm
Net Weight:	7.5 kg
Packing:	Plastic case

Key features:

- Battery-operated hydraulic pump controlled by electromagnetic valve.
- Automatic pressure release when operation is complete. Manual retract at any time during operation.

PE-1**PE-2****Double-action****PE-2D****Key features:**

- Wired remote control cable allows the operator to advance, hold or retract at any time.
- Pressure can be retained when needed. Output force can be adjusted to desired value.
- Visible oil level.

Specifications:

Reservoir Capacity:	5 L	2.4 L	5 L
Rated Pressure:	700 bar	700 bar	700 bar
Voltage:	AC 220 V	AC 220 V	AC 220 V
Rated Power:	750 W	340 W	370 W
Oil Output at High Pressure:	0.7 L / min	0.32 L / min	0.3 L / min
Oil Output at Low Pressure:	6 L / min	2.6 L / min	4 L / min
Hose Length:	2 m	2 m	Sold separately
Dimensions:	460 x 460 x 260 mm	370 x 230 x 170 mm	480 x 380 x 220 mm
Net Weight:	25.0 kg	16.0 kg	25.0 kg
Packing:	Wooden case	Wooden case	Wooden case

PG-700

Gasoline Engine Hydraulic Pump

Specifications:

Reservoir Capacity:	10 L
Rated Pressure:	700 bar. Maximum up to 850 bar
Oil Output at High Pressure:	1.2 L / min
Oil Output at Low Pressure:	7.5 L / min
Engine Speed:	3600 rpm
Dimensions:	650 x 500 x 370 mm
Net Weight:	50.0 kg
Packing:	Wooden case



Key features:

- Low noise, environment friendly double-action gasoline engine pump.
- Large oil reservoir, suitable. Long-time operation without engine overheating.
- Dual-speed automatic switching, ideal for powering single and double-action heads.
- Internal safety valve, automatic pressure release when reaches rated pressure.
- Equipped with pressure gauge.
- Can be wired remote controlled(PG-700MX).



SH-70

Hydraulic Punching Head

Specifications:

Output Force:	310 kN
Rated Pressure:	700 bar
Punching Thickness:	Cu / Al max. 13 mm Mild steel max. 10 mm
Throat Depth:	80 mm
Standard Dies:	Φ 10.5 / Φ 13.5 / Φ 17.5 / Φ 20.5 mm
Net Weight:	13.5 kg
Packing:	Steel case

Key features:

- Body is made of high strength forged steel. Powered by single-acting hydraulic pump.
- Fast and precise punching without burr.



SH-100

Hydraulic Punching Head

Specifications:

Output Force:	600 kN
Rated Pressure:	700 bar
Punching Thickness:	Cu / Al max. 20 mm Mild steel max. 16 mm
Throat Depth:	100 mm
Standard Dies:	Φ 16 / Φ 18 / Φ 22 / Φ 24 mm
Net Weight:	34.0 kg
Packing:	Steel case

- 2-stage hydraulic system, faster punching. Powered by double-acting hydraulic pump.



EH-25

Battery-powered Hydraulic Puncher

Specifications:

Output Force:	120 kN
Rated Pressure:	700 bar
Punching Thickness:	Cu / Al max. 6.5 mm Angle steel max. 6 mm
Throat Depth:	25 mm
Standard Dies:	Φ 10.5 / Φ 13.5 / Φ 17.5 mm
Battery:	18 V Li-ion
Net Weight:	10.0 kg
Packing:	Plastic case

Key features:

- Battery-operated hydraulic pump with 2-stage pumping action, provides fast feed and power stroke. Suitable for working area without power supply.
- External LCD screen, using times can be easily read. A LED light illuminates darker working area.
- Automatic pressure release when operation is complete. Manual retract at any time during operation.



EH-20

Electric Hydraulic Puncher

Specifications:

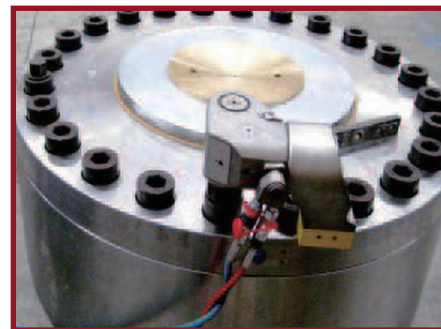
Punching Thickness:	Cu / Al max. 8 mm Mild steel max. 6 mm
Throat Depth:	35 mm
Standard Dies:	Φ 6.5 / Φ 9 / Φ 13 / Φ 17 / Φ 20.5 mm
Net Weight:	12.0 kg
Packing:	Steel case

Key features:

- Ideal for punching L-shaped angle steel, H-shaped I-beam, flat steel, copper and aluminum.
- Suitable for mass punching while fixed on an object.

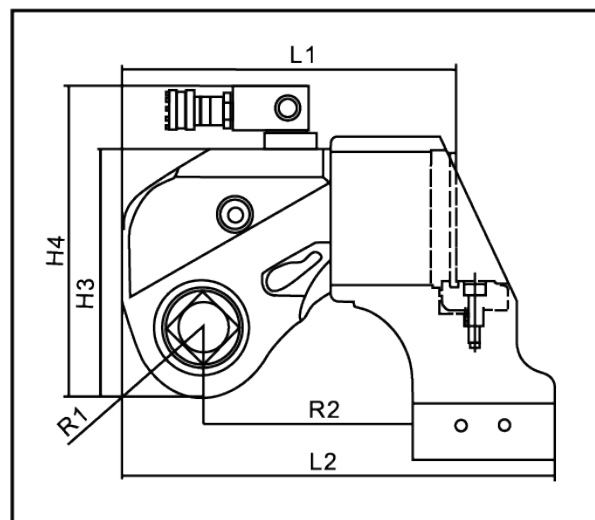
MXTA Series

Driving Type Hydraulic Torque Wrench



Key features:

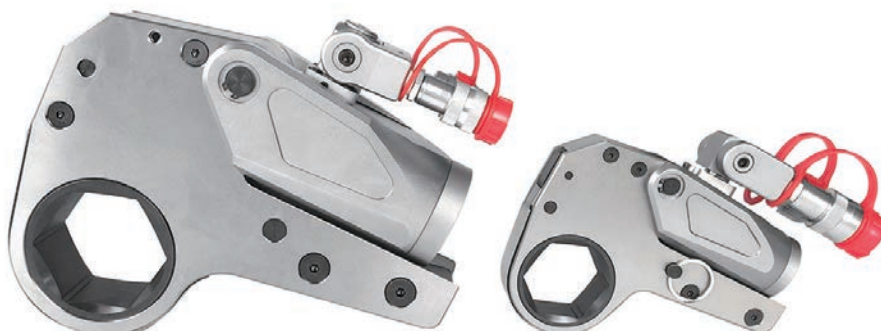
- Max. working pressure up to 70 Mpa, accuracy up to $\pm 3\%$.
- A total of ten models from 112 to 72000 Nm, the most complete in models and widest coverage of bolts in the market.
- Hose connector rotates $360^\circ \times 180^\circ$. Square driver connects with high strength sockets.
- The trigger type lock can place the 360° fine-tuning type reaction arm on any fixed fulcrum.
- Aluminum and titanium alloy forming body, high strength and high toughness.



Model	Torque Range N.m	Bolt Spec.	Weight kg	L1	L2	H1	H2	H3	H4	R1	R2	Driving Shaft
7 MXTA	112-1120	M14-30	1.8	110.8	139.3	42	65.8	76.2	108.1	20.5	68.3	3/4"
1 MXTA	183-1837	M16-36	2	130	182	50	72	99	144	26	99	3/4"
3 MXTA	451-4512	M22-48	4	166	241	68	95	130	176	34	134	1"
5 MXTA	752-7528	M27-56	7	198	281	80	123	155	198	39	152	1-1/2"
8 MXTA	1078-10780	M30-64	9.1	213	308	90	130	171	216	47	171	1-1/2"
10 MXTA	1551-15516	M36-72	13.1	231	336	100	141	187	230	51	174	1-1/2"
15 MXTA	2062-20627	M39-80	18	270	400	110	179	201	244	55	195	2-1/2"
20 MXTA	2666-26664	M42-90	25	295	443	120	182	228	268	59	250	2-1/2"
25 MXTA	3472-34725	M48-100	31	314	464	137	200	255	295	67	251	2-1/2"
35 MXTA	4866-48666	M64-120	45	355	489	153	217	290	330	79	271	2-1/2"

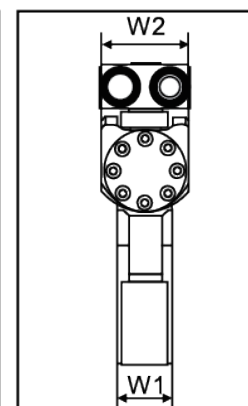
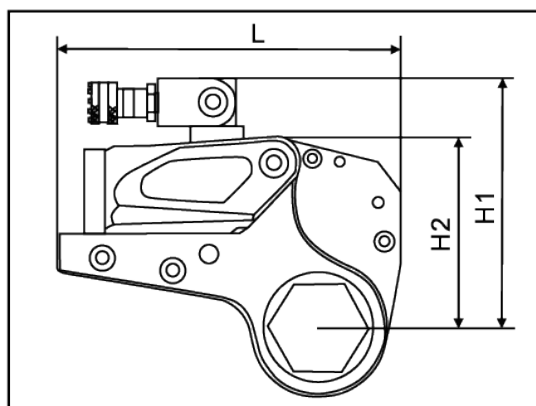
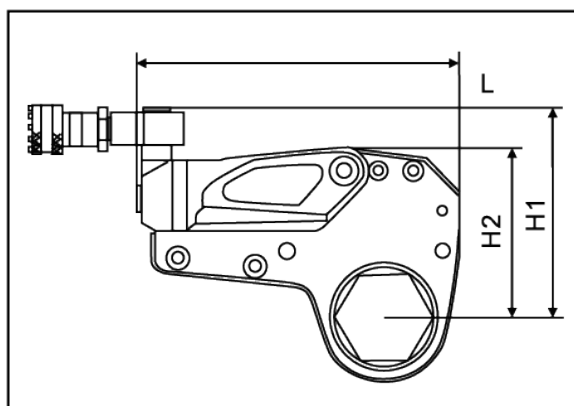
LOW Series

Hollow Type Hydraulic Torque Wrench



Key features:

- Max. working pressure up to 70 Mpa, accuracy up to $\pm 3\%$. A total of six models
- from 232 to 44593 Nm. 360° x 180° and 360° x 360° rotation hose connectors optional.
- Hollow design, wrench directly acts on the nut, torque is more accurate and lighter.
- Aluminum and titanium alloy forming body, high strength and hightoughness.
- New type anti-loose joints to ensure the oil flows smoothly. Anti-stop pawl design can prevent the wrench ratchet from reversing, higher efficiency and torque accuracy.



Model	Torque Range N.m	Nut Range mm	Power Head Weight kg	Working Head Weight kg	L	H1	H2	W1	W2
2LOW	232-2328	19-55	0.9	1.5	196	126	102	32	51
	242-2414	60	0.9	1.5	196	129	105	32	51
4LOW	585-5858	34-65	1.7	3.4	258	163	136	42	66
	647-6474	70-80	1.7	3.4	263	173	146	42	66
8LOW	1094-10941	41-95	3.0	6.3	300	192	168	53	83
	1177-11774	100-105	3.1	6.3	311	201	177	53	83
14LOW	1852-18521	50-117	4.6	11.4	360	225	204	64	99
18LOW	2695-26958	65-130	6.5	14.3	388	264	231	71	109
30LOW	4188-41882	110-155	10.4	20.5	430	303	272	85	131
	4459-44593	160-175	10.4	20.5	441	315	285	85	131

BEIJING CUTTER-LIU TECHNOLOGY CO., LTD.

Add.: No. 139 Fengtailukou, Fengtai, Beijing 100166, China

Phone: +86 (10) 8338 8025

Mobile: +86 189 0114 9030 (WeChat, WhatsApp)

Email: shawn@cutter-liu.com

www.cutter-liu.com



Website QR Code



ver. 202304E

