



Banstead Horticultural Society

Founded 1931

Schedule of shows for

2024/25

"The love of gardening is a seed that once sown never dies, but grows to the enduring happiness that the love of gardening gives"

Gertrude Jekyll



Dear Members,

Welcome to our new schedule for the 2024 and 2025 shows, detailing our exciting and varied classes. There are a few changes to the entry criteria, so please check the schedule before you select the classes and exhibits you wish to enter. The schedule provides details of the rules and regulations and the committee members involved should you have any questions regarding your entries. The Judges are always extremely complimentary on the high standard of our exhibits and I am sure they will be equally impressed over the coming two years. Thank you to our advertisers who help us to produce the schedule with their contributions. As they are predominantly small businesses, please also help them by showing your support. Wishing you ever success with your gardening, enjoy growing beautiful blooms and delicious vegetables, experimenting with new and exciting challenges in your gardens and allotments. I also look forward to seeing the lovely crafts, enticing cookery and entries from our young exhibitors that are increasing in numbers at each show. I look forward to seeing your results and sharing your joy.

Gail Fraser, Chair Person.

All events are held at Banstead Community Hall, Park Road, SM7 3AJ

2024

Saturday, April 6 at 2pm
Saturday, June 15 at 2pm
Saturday, July 27 at 2pm
Saturday, September 14 at 2pm
Saturday, November 9 at 2pm

2025

Saturday, April 12 at 2pm
Saturday, June 21 at 2pm
Saturday, July 26 at 2pm
Saturday, September 13 at 2pm
Saturday, November 8 at 2pm

Other events: Day Time events - (DM), Evening Events (EM) See Programme or website for full details. Full arrangements and updates will be notified in advance by Bulletin.

2024

Thursday, February 15 at 10.00 (DM)
Friday, March 22 at 7.30pm (EM)
Saturday, May 25, 2.00 - 5.00pm (DM)
Saturday, July 10 2.00pm (DM)
Friday, October 11 at 7.30pm (EM)
Friday, November 24 at 2.30pm (DM) AGM
Tuesday, December 4 at 10.00 (DM)

2025

Wednesday, February 19 at 10am (DM)
Friday, March 14 at 7.30pm (EM)
Saturday, May 24 (DM-TBC)
Wednesday, July 9 at 2pm (DM)
Friday, October 10 at 7.30pm (EM)
Friday November 21 at 7.30pm (EM) AGM
Wednesday, December 3 at 10am (DM)

Replacement extra copies of the schedule are available for £3

Banstead Horticultural Society

Affiliated with
The Royal Horticultural Society
The National Vegetable Society Surrey Horticultural Federation
and the relevant show classes will be judged according to the rules
of these Societies except where otherwise stated.

LIST OF OFFICERS AND COMMITTEE MEMBERS AS AT NOVEMBER 19 2021

President

A. LOVER

Life Vice-Presidents

Mrs. B. ABBOTT
K. BALDWIN
Mrs. D. BECK
Mrs. M. BYE

Mrs J. CANNER
J.H.J. GODDARD
A. LOVER
D.S. PETERKEN

R. REID
Ms. P. TURNER
G. TYLER
Miss. A.M. URWIN

Chairman:

Mrs. G. FRASER

Vice-Chairman:

D.S. PETERKEN

Secretary:

POSITION VACANT

Assistant Secretary:

Mrs. M. DIETSCH

Treasurer:

R. COLLIER

Show Secretary:

D.S. PETERKEN

Show Captain:

D.S. PETERKEN

Assistant Show Secretary:

Mrs. S. KEYWOOD-GRAY

Assistant Treasurer:

R. REID

Membership Secretary:

Ms. J. RUSSELL

Newsletter Editor:

Mrs. A. SHORE

Publicity Officer:

Mrs G. FRASER

Committee:

Ms. J. MAWER R. REID

Independant Examiner:

A. J. ELLIOT

RULES

1. The Society shall be called **The Banstead Horticultural Society**.
2. The objects of the Society shall be the promotion of Horticulture and Associated Interests by way of shows, talks, social events and interaction with the community.
3. Membership is open to individuals, households (2 people), horticultural societies, garden associations and similar societies on payment of an Annual Subscription. Societies or associations are entitled only to one membership card. Children under 16 years of age shall be Junior Members and shall pay no subscription unless they wish to enter adult classes at shows when they will pay full membership. The Society shall be run on a not for profit basis and shall not trade but activities shall be conducted to offset show costs.
4. The financial Year of the Society shall end on the 30th day of September and the Annual General Meeting shall be held no later than the 31st December.
5. The Annual General Meeting shall be called annually in November to approve the Society's activities and to approve the annual accounts. The Annual General Meeting shall elect Officers of the Society consisting of President, Life Vice Presidents who once elected need not be re-elected subsequently, Chairman, Vice-Chairman, Treasurer, Deputy Treasurer, Secretary, Assistant Secretary, Show Secretary, Assistant Show Secretary, Show Captain, Membership Secretary and Publicity Officer. The Annual General Meeting may also elect a Committee of nine members with power to co-opt three additional members. Any vacancy occurring in the Officers or Committee may be filled temporarily by the General Committee. An Independent Financial Examiner shall be elected.
6. The management of the Society shall be in the hands of the Committee and the Officers of the Society who will form the General Committee, five to form a quorum.
7. The General Committee shall have power to appoint staff and sub-committees when necessary. The General Committee may appoint a newsletter editor to oversee all aspects of its production and distribution.
8. Regulations for Exhibitions shall be under the control of the General Committee.
9. A Special General Meeting may be summoned at any time by any twenty five members acting together, who shall send a request to the Secretary to convene such a meeting. The objects of the meeting shall be stated in the notice convening it and no other business shall be dealt with. At least fourteen days' notice shall be given of a Special General Meeting.
10. The Society may be dissolved by a resolution passed by a two thirds majority of those present at a Special General Meeting convened for that purpose. Upon dissolution of the Society the surplus assets (if any) of the Society remaining after the satisfaction of all debts and liabilities shall not be paid to nor distributed amongst the members of the Society but shall be given or transferred to such other institutions as members of the Society in General Meeting may determine.
11. Alterations to Rules shall only be made at a General Meeting, fourteen days clear notice having been given to the members before the meeting. Such proposed alterations must be notified to the Secretary at least twenty eight days before the meeting to enable due notice to be given. Purely administrative alterations to the Rules may be made by the General Committee without recourse to the Annual General Meeting, apart from matters referred to the A.G.M. as specified in the rules of the Society.
12. The President, Chairman and Secretary of the Society shall be ex officio members of all sub-committees.
13. The General Committee may grant an honorarium to any member of the Society as they see fit.
14. The General Committee reserves the right to exclude any member of the Society from any of its activities and to revoke their membership.
15. The General Committee shall have power to deal with any matter not provided for in these Rules.

SHOW REGULATIONS

1. Members of the Society are those who have paid their subscriptions for the current year.
2. Entries will be accepted only from paid up members of the Society and children under 16. **Children who wish to enter adult classes need to be members of the Society.**
3. There are no entry fees, and no prizes with the exception of the children classes. See also Reg 21.
4. All entries excluding pot plants must have been grown or made by the exhibitor. This ruling does not apply to floral exhibits in which exhibitors are allowed to use plant material which has not been grown by themselves. **Flowers may only be purchased where stated.**
5. All pot grown plants must be the property of the exhibitor and must have been in his or her possession at least 3 months prior to the show.
6. Two or more persons may not compete separately in the same class with produce from the same garden or allotment. This ruling does not apply to entries in the junior, cookery, floral exhibits and craftwork classes. If members wish to make joint entries, exhibits should be entered in joint names.
7. Exhibitors are encouraged not to put in entries which have been previously exhibited, especially in the craft class.
8. The Committee reserves the right to satisfy itself, by visit or otherwise, that all regulations are observed.
9. **New Exhibitor.** Entry to any new exhibitor class is to be restricted to exhibitors who have not won a prize for a similar class at this or any society prior to the current season.
10. Annuals are considered as a plant that is raised from seed and naturally and ordinarily flowers, seeds and dies (irrespective of frost) within 12 months.
11. A dish of fruit or vegetables must consist of one cultivar (variety) only.
12. In all classes where cut material is shown, all stems must reach below the water in the vase, or receptacle, or be in water retaining material.
13. In all classes where pots, pans, bowls or containers are required the size given is the internal diameter of round pots or the internal measurement of any side.
14. Vases and/or plates will be provided and must be used for all appropriate classes unless otherwise stated. Covers are provided for most cakes and biscuits.
15. Staging times are given at the head of each Show Schedule and will be strictly adhered to.
16. **While the Committee will take every reasonable care, it will not be held responsible for any damage or loss to exhibits.**
17. A bench card will be supplied to exhibitors for each exhibit. This must be placed face downwards with the exhibit to which it refers and will be reversed when the judging is completed.
18. No staged exhibit is to be moved without the permission of either the Exhibitor, Show Officials or Judges.
19. Exhibitors will not be allowed to be present while the judging is in progress unless in an official capacity.

20. Winners of cups will hold them for a year and return them in good clean condition to the Show Secretary by noon on the day of the corresponding show the following year. See also under "Cups" on page 7.
 21. Certificates will be awarded to prize winners, unless otherwise stated.
 22. A "Banstead Horticultural Society" Blue Ribbon may be awarded for outstanding exhibits, as a whole, at any show.
 23. A Certificate of Merit may be awarded to any exhibits which are considered for but not awarded a Blue Ribbon.
 24. In the event of two or more competitors securing an equal number of points for any of the Challenge Trophies, the one obtaining the most first prizes will be adjudged the winner. Should a tie still result, the judges will decide. (If the judges are not available a decision will be made by available Committee members - see Pointing.)

To qualify for any cup or trophy awarded for highest points obtained, at least one first prize must be included in the relevant class or classes. This applies also to the runners-up. It does not apply to Junior Classes.
 25. An exhibitor who considers that an award has been given for an exhibit which does not conform to the conditions of the schedule, may lodge a protest with the Show Secretary up to an hour before prizegiving. A deposit of £1 must accompany the protest and this will be returned if the appeal be successful.
 26. Subject to Regulation 25, the decision of the judges will be final. The judges may withhold any prize if, in their opinion, the exhibit is unworthy of an award. Any class may be divided at the discretion of the judges or show officials.
 27. Prizewinners are expected to receive their prizes in person. Any prizes not collected at the prizegiving will be held by the Society for collection.
 28. No exhibit may be removed before the end of the prize-giving without the permission of the Show Secretary.
 29. All junior classes may be sub-divided according to the age groups in the Autumn Show.
 30. Cups are insured by the Society but holders are expected to maintain them in good clean condition - any damage should be reported immediately to the Secretary. They should be taken to Mr Snob, High Street, Banstead for engraving at the Society's expense. Medals may be engraved at the owners expense.
-

POINTING

Points will count for awards as follows:

3 for a first, 2 for a second, 1 for a third, except in the following cases:

6 for a first, 4 for a second, 2 for a third, when two dishes or vases are demanded, Mixed Flowers, Class 6 in the Early Summer Show, Class 36 in the Summer Show and Class 64 in the Autumn Show, 9 for a first, 6 for a second, 3 for a third, when three dishes or vases are demanded and for collections of vegetables, crafts and pot plants, Class 53 Summer Show and Class 31 Late Autumn Show.

5 additional points will be given for each Blue Ribbon award, and 3 additional points for a Certificate of Merit.

SHOW NOTES

1. Read the schedule carefully and be sure that the number of specimens and the group according to kinds is correct.
2. Throughout the schedules the words “kinds” and “cultivars” (varieties) are used in the following sense: Sweet Peas and Roses are distinct kinds of flowers. Peace and Iceberg are distinct cultivars (varieties) of roses.
3. You are recommended to use the smallest vase that will comfortably hold the exhibit. Smaller vases often display the material to better effect.
4. Aim for uniformity of size, shape and colour. The biggest are not always the best. Be sure that your exhibits are clean and free from blemish.
5. With collections, strictly adhere to the sizes given.
6. It adds considerably to the interest if exhibitors name their cultivars (varieties) and, in case of close competition, correct naming will be a deciding factor.
7. A **Vase** shall be a container the height of which is greater than the diameter at the top. A **Bowl** may be circular, oval, rectangular, etc., but the diameter at the top shall be greater than or equal to its height.
8. A **Basket** shall be made of any natural flexible materials, woven or braided.
9. **Narcissi**. Guidance on the classification of Narcissi is available in a leaflet from the Show Secretary at 20p per copy.
10. **Space Allowed**. In all displays i.e. collections of vegetables, pot plants and flower arrangements, tables are approx. 610mm (2 ft) deep and frontage is 610mm (2 ft) unless otherwise indicated. Cloths and boards are permitted.
11. In all displays of **floral art**, plant material must predominate over accessories when used and the height of the arrangement must be in proportion. **The Society will accept oasis but would prefer other alternatives to be used.**
12. A **floral arrangement** is mainly a horticultural exhibit and should consist only of natural plant material (NPM) and flowers or foliage grown by the exhibitor and arranged in the exhibitors own container. Mechanics may be included. These are informal arrangements and may be judged by horticultural judges
13. An **Exhibit** is composed of **Natural Plant Material (NPM)** with or without accessories. Backgrounds, bases, containers, drapes, exhibit titles and mechanics may always be included in an exhibit. More than one placement may always be included in exhibits over 10”. Material may be purchased where stated. These classes are judged by the rules and definitions formulated by N.A.F.A.S.
14. Definitions of Natural Plant Material and mechanics may be found in the National Association of Flower Arrangement Societies handbook available from the Show Secretary (see also page 9).
15. **Recipes** - When cooking metric and imperial measures are approximate conversions and should not be mixed. Presentation will be taken into account. Exhibitors must adhere to given recipes.
16. When displaying **Preserves**, jars must be labelled as to their contents, indicate the date of making on the labels, must be full and of clear glass. No named jars or lids to be used. Jams should be covered by a waxed disk and clear cover or a new twist top. Pickles should have solid covers. Lemon curd must have a waxed disk and clear cover.
17. **Judging** Classes for cookery are normally judged to W.I. regulations.
18. **Cordial**. A soft drink with a fruit base, usually diluted.

Show Regulations, Show Notes and Show Tips

SHOW TIPS

Always take a few extra specimens to the show in case of accidents and when you have finished staging, check the exhibit is well finished and conforms to the show schedule. There are normally experienced exhibitors around who are willing to give advice or ask the show officials for help.

Flowers should be cut at dawn or dusk, when the flowers are freshest, immediately after cutting place in a deep water, remove larger leaves from the stems. Cut all stems on slant. Flowers with hollow stems like delphiniums or any flowers with milky sap can be helped to stay fresh by placing the base of the stems in boiling water. Flowers or shrubs with woody stems should have the base of the stems crushed before they are put in water. Flowers from florists need to be cut an inch or so from the base. Mixed flower displays last longer in sugared water.

Fruits should be fresh, uniform, free of blemish, and characteristic in shape and colour. Do not use overripe fruits. Pick as near to show time as possible. Never remove the stalks or calyces of any fruit apart from citrus fruits and blueberries. Handle all fruit as little as possible to preserve the natural bloom. Cut with scissors. Harvest currants, jostaberries and worcesterberries with the strigs intact, grapes should be cut as bunch the part of the stem intact creating a T. At no stage should fruit be polished. Apples, gooseberries, medlars, pears and quinces may be shown ripe or unripe. All other fruit should be ripe. Some fruits are best staged either round the edge of, or in lines across the plate. Currants should be staged layered across the plate and mounded towards the centre.

Vegetables should be handled as little as possible to retain their natural bloom. Root vegetables should be washed with a soft sponge, not scrubbed. Carrots, parsnips and beetroot should have their small side roots removed, but their roots as long as possible, trim foliage to about 75mm. Potatoes should generally be between 200g and 250g with shallow eyes. Brassicas and lettuce should be thoroughly washed with running water to tease bugs and soil out from between the leaves. Lettuce should have their roots cleaned thoroughly. Do not remove too many outer leaves and trim back to reveal the head. Onions, shallots and garlic should be thoroughly dried. Do not overskin, the tops should be neatly tied, on garlic reduce the stem to 25mm. Roots should be trimmed back to the basal plate: avoid soft, stained specimens with thick immature necks. Beans and peas should be handled with extra care and harvested with scissors, ensuring the stalks and tips are left intact. Peas can be held up to light to ensure they are well podded and to help detect any faults. Spinach, chard and other leaves should be harvested at the last moment, washed and kept fresh until showing, pick the best undamaged well coloured leaves complete with stalks. Rhubarb should be shown with the foliage cut back to 75mm. Tomatoes should not be overripe, aim for a uniform set of ripe fruits with fresh calyces; stage with the calyx uppermost. Trusses of tomatoes should be cut as near to the main stem as possible; both mature and immature fruits may be shown but at least one third should be fully ripe displaying the natural colour for the cultivar. Courgettes should be young and approximately 150mm in length. Leeks should be uniform in length, in good condition and solid with a good uniform blanch that is not bulbous at the base. Avoid, excessive stripping of outer leaves and evidence of rust disease. Ensure the stem, roots and leaves are flushed clean of any dirt. Marrows, squashes, etc. should have the stalk left intact.

CUPS

All Cups and Bowls are Challenge Trophies to be held by the Winner for one year until re-awarded at the following year. The Runners-up in the cups marked * will be presented with an **Award of Honour**.

Any exhibitor winning the same cup in three successive years will be entitled to a miniature. In the case of the cups awarded to boys and girls in the Autumn Show and the Juniors cups awarded in the Late Autumn Show, these will be regarded as equivalent for this purpose. Anyone winning extra miniatures will be entitled to an extra plaque.

THE BANSTEAD HORTICULTURAL SOCIETY CUP*

Awarded to the Gardener of the Year for winning the most points in the horticultural classes during the year together with a Diploma of Excellence in horticulture.

The Powell Challenge Bowl* awarded to the runner-up to the above.

The Gordon Braddy Cup* awarded for winning the most points in the non-horticultural classes during the year.

The Machie Family Cup awarded to the runner-up to the above.

R.H.S. Banksian Medal awarded to the exhibitor gaining the most points in the whole of the horticultural classes throughout the year. Winners of this medal in either of the previous two years are not eligible.

These cups will be awarded at the **Annual General Meeting** and will be displayed at the following Spring Show together with the results.

SPRING

Chairman's Cup*

Awarded for the greatest number of points in Classes 2 to 20.

The Betty Maddams Cup*

Awarded for the greatest number of points in Classes 21 to 24.

Jack Howell Cup*

Awarded for the greatest number of points in Classes 25 to 28 and in the event of a tie will be awarded to the exhibit of most merit to give a clear winner. For the purposes of the Cup, Classes 25 and 26 will be pointed 9 – 6 – 3.

EARLY SUMMER

Major Wade Rose Cup*

Awarded for the best Rose in the Show.

Mrs. Bristow Challenge Cup*

Awarded for Class 6.

Branscombe Memorial Delphinium Bowl*

Awarded for the greatest number of points in the Delphinium classes.

Marilee Cup*

Awarded for the greatest number of points in the Iris classes throughout the year.

SUMMER

Edwards Cup*

Awarded for the most points gained in the vegetable classes in the Spring Show Iris, Early Summer and Summer Shows.

Collett Cup*, with the National Sweep Pea Society's Medal

Awarded for the greatest number of points in 15 & 16 Early Summer Show and 12 - 14 Summer Show classes.

AUTUMN

Burkin Rose Cup*

Awarded for the most points for Roses throughout the year excluding class 6 Early Summer Show.

L.G. Acott Cup*

Awarded for the most points in Classes 27 to 29.

Birkbeck Cup*

Awarded for the most points in Classes 30 to 32.

Presidents Cup*

Awarded for the most points in the Dahlia classes.

Shackell Cup*

Awarded for the most points in Classes 41 to 62.

Village Tradesmen's Cup*

Awarded for Class 63.

National Vegetable Society's Silver Medal

Awarded for the most meritorious vegetable exhibit in the show.

P. E. Smith Cup

Awarded for the most points in the soft fruit classes throughout the year.

The Parks Challenge Bowl*

Awarded for the most points in Classes 64 - 69 and 71 and 72.

"Uncle Fred" Cup*

Awarded to the girl gaining the greatest number of points in the Junior Classes.

"Uncle Bert" Cup*

Awarded to the boy gaining the greatest number of points in Junior Classes.

The Royal Horticultural Society's Young Competitors Award of Merit will be awarded to the Junior Exhibitor winning the most points in **all the Horticultural Classes** throughout the year.

LATE AUTUMN

New Exhibitor's Award

An Award of Merit in Horticulture or Floral Art will be presented to the person gaining the most points in all the classes throughout the year (see show regulation 9).

Jean Acott Cup*

Awarded for the most points in Classes 4 – 6.

M.A. Branscombe Bowl*

Awarded for the greatest number of points in Classes 7 – 11.

Lady Carr Cup

Awarded for the most points in the following classes:

Spring Show Classes 31 - 35

Summer Show Classes 22 - 32

Iris Show Class 10

Autumn Show Classes 15 - 22

Early Summer Show Classes 33 - 42

Late Autumn Show Classes 17 - 21

The Barnett Challenge Cup*

Awarded for the most points in the Vegetable Classes.

Burkin Cup for Fruit*

Awarded for the most points in the Fruit Classes.

Doris Hewlett Challenge Cup*

Awarded to the girl gaining the greatest number of points in the Junior Classes throughout the year.

The VI Griffiths Childrens' Craft Cup*

Awarded to the runner-up of the Doris Hewlett Challenge Cup.

A. & G.A. Cross Challenge Cup*

Awarded to the boy gaining the greatest number of points in the Junior Classes throughout the year.

Stanley Baker Challenge Cup

Awarded to the runner-up of the A. & G.A. Cross Challenge Cup.

A.G.M.

Lady Carr Cup*

Awarded for the most points in the following classes:

Spring Show Classes 29 to 30 Iris Show Class 10 Autumn Show Classes 9 to 14
Early Summer Show Classes 17 to 25 Late Autumn Show Class 12
Summer Show Classes 15 to 21.

F.W. Quenzer Challenge Cup*

Awarded for the most points in the following classes:

Spring Show Classes 31 to 35 Summer Show Classes 22 to 32
Iris Show Classes 7 - 9, 11 & 12 Autumn Show Classes 15 to 22
Early Summer Show Classes 33 to 42 Late Autumn Show Classes 17 to 21

Burberry Cup*

Awarded for the most points in the mixed flower classes throughout the year.

Mrs. Cross Memorial Challenge Bowl*

Awarded for the greatest number of points in the container Classes throughout the year.

The Harvest Festival Cup*

Awarded for the most points in Class 53 Summer Show and Class 31 Late Autumn Show.

Cogswell Challenge Cup*

Awarded for the most points in the Pot Plant Classes throughout the year.

The Wade Branscombe Memorial Cup*

Awarded for the most points in the following classes throughout the year.

Spring Show – Class 49 Summer Show – Classes 60 & 61
Early Summer Show – Class 61 Autumn Show - Class 81
Late Autumn Show – Classes 47 & 48

The Lilian Spring Craft Cup*

Awarded for the most points in Spring Show 68 - 70, Summer Show 76 - 78, Late Autumn Show 66 - 73.

Viola Sharman Cup*

Awarded for the most points in the following Classes:

Spring Show – Class 53 & 54 Summer Show – Class 63 & 64
Iris Show Class 16 Autumn Show – Classes 83 & 84
Early Summer Show – Classes 68 & 69 Late Autumn Show – Class 50 & 51

Mrs. Shackell Challenge Cup*

Awarded for the most points in the Miniature Flower Arranging Classes throughout the year.

Lilian Williams Rose Bowl*

Awarded for the most points in the following Classes:

Spring Show – Class 58 Summer Show – Classes 67 to 68
Iris Show Class 17 Autumn Show – Classes 87 & 88
Early Summer Show – Classes 67 & 68 Late Autumn Show – Classes 53 to 57

Branscombe Memorial Ladies' Vase*

Awarded for the most points for Cookery throughout the year.

A Certificate of Merit in Floral Art

Will be awarded to the person gaining most points in all flower arranging classes throughout the year.

N.P.M. and Mechanics.

Natural Plant Material is a wide term used to describe any vegetable matter. It includes fresh, dried, wild, foliage, fruit, fungi, vegetables and seaweed.

Mechanics are the means to support plant material and to stage other parts of the exhibit. In traditional arrangements, mechanics would normally be inconspicuous. In contemporary Exhibits innovative mechanics are often intentionally visible. Further definitions are available from the Show Secretary.



Banstead Horticultural Society

BEST FRONT GARDEN COMPETITION 2024

Enter the Best Front Garden Competition to win £35

We are looking for local residents who are proud of their front garden to enter this fun competition, everyone is welcome to join in.

- Gardens must be within 1.5 miles of All Saints Church and visible to passers-by
- Entry is free to all, check out our low-cost membership benefits at www.bansteadhorticulturalsociety.com/membership
- Gardens will be judged on two of the following, weeks commencing April 14th, June 15th, September 1st. Please put your preferred dates on the entry form
- Completed application forms by April 6th when the competition will be launched at the Spring show

If you know someone who cherishes their beautiful garden, do encourage them to join in.
Phone David for more information 01737 351224.

Entry form for Best Front Garden in Banstead Village

Name:
Address (of garden):
Phone:
Send to: BHS, Inyoni, De Burgh Park SM7 2PP or email to peterkend@aol.com

SPRING SHOW

AT THE COMMUNITY HALL, BANSTEAD, SM7 3AJ

APRIL 6, 2024

SATURDAY

APRIL 12, 2025

Entries by telephone or written to the Hon. Show Secretary or Assistant Show Secretary on or before the Wednesday preceding the Show by 8.00 p.m. For details see Page 1.

Exhibits to be staged between 9.30a.m. and 11.00a.m. on the Saturday of the Show.

No Entry Fee. Judging to commence at 11 a.m.

Open to the Public at 2.00 p.m.

Prize Giving at 5.00 p.m.

Exhibitors should read "Show Regulations", "Show Notes" and "Show Tips" on pages 3 to 6.

A copy of classified lists of Daffodil names will be available for inspection.

In Classes 2 to 20 an exhibit shall consist of 3 stems of 1 or more cultivars, 1 vase.

Class

1. New exhibitors. 1 Stem Narcissus or Daffodil, any division 1 vase.
2. Narcissi, Division 1. Trumpet, perianth coloured; corona coloured, not paler than the perianth, e.g. 1 Y – Y.
3. Narcissi, Division 1. Trumpet, perianth white; corona coloured, e.g. 1W-Y; 1 W-P.
4. Narcissi, Division 1. Trumpet, perianth white; corona white, not paler than the perianth.
5. Narcissi, Division 2. Large cupped, perianth coloured; corona coloured, e.g. 2Y-R; 2Y-Y.
6. Narcissi, Division 2. Large cupped, perianth white; corona coloured, e.g. 2WGWY; 2W-P.
7. Narcissi, Division 2. Large cupped, perianth white; corona white, not paler than the perianth.
8. Narcissi, Divisions 1 and/or 2. Reversed bicolour, e.g. 1Y-W.
9. Narcissi, Division 3. Small cupped, perianth coloured; corona coloured, not paler than the perianth, e.g. 3Y-YYR; 3Y-Y.
10. Narcissi, Division 3. Small cupped, perianth white; corona coloured, e.g. 3WGYR; 3W-Y.
11. Narcissi, Division 3. Small cupped, perianth white, corona white, not paler than the perianth.
12. Narcissi, Division 4. Double.
13. Narcissi, Division 2, 3 & 4. One stem of each division.
14. Narcissi, Division 5. Triandrus.
15. Narcissi, Division 6. Cyclamineus. Characteristics of any of the Narcissus cyclamineus clearly evident.
16. Narcissi, Division 7. Jonquil, cup or corona less than two-thirds the length of the perianth segments.
17. Narcissi, Division 8. Tazetta. Characteristics of any of the Narcissus tazetta group clearly evident.

18. Narcissi, Division 9. Poeticus. Characteristics of the Narcissus poeticus group without a mixture of any other.
19. Narcissi, Division 11, split Coronas.
20. Narcissi, any division not provided for above.
21. Narcissi, collection of three cultivars from three divisions. 3 stems of each, 3 vases.
22. Narcissi, collection of 6 different cultivars, 2 vases, 3 stems to a vase.
23. Narcissus, Division 1. 1 specimen bloom, 1 stem.
24. Narcissus, Division 2, 3 or 4. 1 specimen bloom, 1 stem.
25. Narcissi, "A". 3 stems, 1 vase.
26. Narcissi, "B". 3 stems, 1 vase.
27. Narcissi, "A". 1 stem, 1 vase.
28. Narcissi, "B". 1 stem, 1 vase.
29. Primroses, 9 stems, exhibitor's own container.
30. Polyanthus, 5 stems, exhibitor's own container.
31. Tulips, 3 stems, 1 vase.
32. Hyacinths, 1 stems, 1 vase.
33. Hellebores, 6 blooms, to be shown on a board or card not exceeding 305mm (12").
34. Flowering tree or shrub, one kind, 1 vase.
35. A foliage tree or shrub, 1 kind, 1 vase.
36. Flowers, other than those specified, one kind, 1 vase or Exhibitor's own container.
37. Mixed flowers, 1 vase or Exhibitor's own container.
38. A specimen flower in a frame, frame provided, inside measurement 168 x 117mm.
39. A planting of Spring flowers in a container not to exceed 508mm (22").
40. A planting of Spring bulbs in a container not to exceed 330mm (12").
41. Border Auricula, one or more plants in a pot, not to exceed 184mm (7¼").
42. A planting of Primroses and/or Polyanthus, in a pot, not to exceed 184mm (7¼").
43. Primula, excluding Primroses and Polyanthus, in a pot, not to exceed 184mm (7¼").
44. A pot-grown Orchid, in Flower, in a pot, not to exceed 184mm (7¼").
45. A pot-grown plant in flower, excluding those in other classes, in a pot, not to exceed 184mm (7¼").
46. A pot-grown foliage plant in a pot, not to exceed 184mm (7¼").
47. Cactus or other succulent, in a pot, not to exceed 184mm (7¼").
48. Alpine, one or more plants of a single species of cultivar in a pot or pan, not to exceed 184mm (7¼ ins.).
49. A collection of pot grown plants to be arranged on a 915mm (3 ft.) frontage of tabling. Presentation to be taken into account.
50. Rhubarb, without leaves, 3 sticks (see page 6).
51. Any other vegetable (see page 36).
52. A horticultural hiccup.
53. An arrangement of Narcissi, any natural foliage. Exhibitor's own container. Daffodils are included in this designation. Frontage 610mm (2 ft.).
54. An arrangement of Spring flowers, any natural foliage allowed. Exhibitor's own container. Frontage 610mm (2 ft.).

55. Miniature flower exhibit, not to exceed an overall measurement of 102mm (4 ins.) N.P.M.
56. A button hole (main flower can be purchased).
57. "LITTLE GEMS". An exhibit. N.P.M. Frontage 256mm (10 ins.).
58. 2024 "SPRING WEDDING" { An Exhibit
2025 "A NEW AWAKENING" { N.P.M.
- Frontage 610mm (2 ft.). Flowers may be purchased.
59. For males only. An arrangement of spring flowers in an unusual container. Space allowed 250mm (10 ins.) to be judged by public ballot up to one hour before prize giving.
60. Wine (home-made). In a clear unbranded bottle (approx. 75cl). Bottles should be filled to leave an air space of approx. 18mm (3/4"). Only natural all cork flanged stoppers or cork stoppers with plastic tops to be used. Bottles should not be labelled, an appropriate note should be displayed on the Show bench.
61. A Simnel Cake. (Made to own recipe, please provide recipe).
62. A Chocolate Victoria Sandwich, decorated with icing (made to own recipe, please provide recipe).
63. Oat Bread. (See recipe on page 21)
64. Fruit Scones, 5.
65. Garibaldi biscuits.
66. Seville Orange Marmalade, thinly cut. { See note 16, on page 5
67. Seville Orange Marmalade, chunky.
68. A home-made Easter card.
69. A seasonal item of Craftwork.
70. A seasonal picture in any medium.

JUNIOR CLASSES Juniors of 3 years but under 16.

Prizes will be awarded to those gaining Firsts, Seconds and Thirds.

71. A vase or planting of spring flowers, 1 vase or Exhibitor's own container.
72. An item of cookery based on chocolate.
73. Decorated Eggs.

AN ITEM OF INTEREST

An item of horticulture or artwork which the owner considers to be of general interest, with notes.

The Show Secretary is to be notified of the exhibit.

All members are encouraged to donate any spare produce to the sales table. Bring your spare plants and see what you can buy.

The Banstead & District Allotment & Gardens Association

Welcomes new members
(You don't have to be an allotment holder)

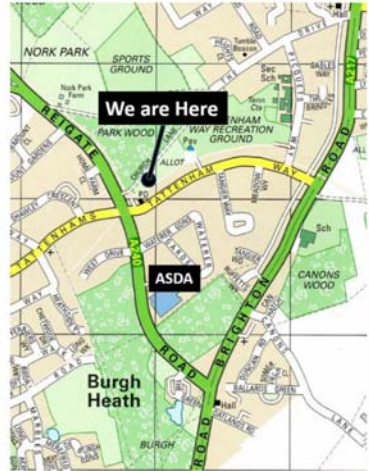
We are open every Sunday
From 9am until 12 noon

For

All your Composts, Fertilisers, Tools, Bamboo
Canes, Ground Cover Fabrics, Seeds, Bulbs,
Seed Potatoes, Onion Sets, Bird Food, Fish
Food and much more – and favourably priced!
Plus a wealth of experience and knowledge at
your disposal

ALL FOR THE ANNUAL MEMBERSHIP OF £3

You will find us behind the Tattenham Way
shops in Church Lane (off Reigate Road)



crossways
nursery

Woodcote Road, Purley, Surrey CR8 3PA
T: 020 8645 0710, M: 07958 700497

Huge range of plant pots in a variety of sizes, colours and shapes

Bedding plants, potted geraniums, perennials, shrubs, roses, fruit trees
and a major supplier of a variety of Christmas trees both large and small

All at a competitive price

Easy parking

Open Monday – Sunday 9:00 am – 5:00 pm

IRIS SHOW

AT THE COMMUNITY HALL, BANSTEAD, SM7 3AJ

MAY 25, 2024

SATURDAY

MAY 23, 2025

Entries by telephone or written to the Hon. Show Secretary or Assistant Show Secretary on or before the Wednesday preceding the Show by 8.00 p.m. For details see Page 1.

*Exhibits to be staged between 2.00 p.m. and 2.30 p.m. on the Saturday of the Show.
No Entry Fee.*

Open to the Public at 2.30 p.m.

Prize Giving at 5.00 p.m.

Exhibitors should read "Show Regulations", "Show Notes" and "Show Tips" on pages 3 to 6.

Class

1. Iris (flag), Bearded tall, 1 stem, 1 vase.
2. Iris (flag), Bearded tall, 3 stems, 1 vase.
3. Iris, English, Spanish or Dutch, 1 stem, 1 vase.
4. Iris, English, Spanish or Dutch, 3 stems, 1 vase.
5. Iris, any other variety, 3 stems.
6. A vase of iris, space allowed 456mm (18"), presentation will be taken into account. Exhibitors own vase can be used.
7. Any other bulbous plant in flower, 3 stems, 1 vase.
8. Paeonia, 1 bloom on 1 stems, 1 vase.
9. Perennial flowers (excluding those in classes 1 to 8) 3 stems, 1 vase.
10. Pansies or violas, 6 boards provided.
11. A tree or shrub in flower. 1 vase.
12. A tree or shrub exhibited for its foliage. 1 vase.
13. A pot-grown plant in flower, in a pot not to exceed 184mm (7¼ ins).
14. A pot grown foliage plant, in a pot not to exceed 184mm (7¼ ins).
15. Any vegetables, 1 kind (see the main schedule).
16. An arrangement of flowers, frontage 305mm (10 ins).
17. "Summer Days are Coming". An exhibit of late spring flowers in a basket, not to exceed 305mm (10 ins). Flowers may be purchased.
18. "May Dance". A display incorporating a combination of at least two of the following: flowers, pot plants, cookery, craftwork, vegetables. To be staged on a 2 ft (610mm) frontage. Height unlimited. Flowers may be purchased.
19. An item of interest in any other category of our normal shows that the exhibitors wish to exhibit. Please notify the secretary of the size.



4a Woodmansterne Lane
Wallington
SM6 0SU

wallingtonnursery@gmail.com

07552 521372

Opening hours
Tues-Sat 9am-5pm
Sunday 10am-4pm

Car Parking

For home grown:

Bedding Plants
Perennials
Shrubs
Hanging Baskets
Planted Pots
Fruit Trees
Ornamental Trees
Christmas Trees
Roses
Hedging
Compost, Manures, Bark

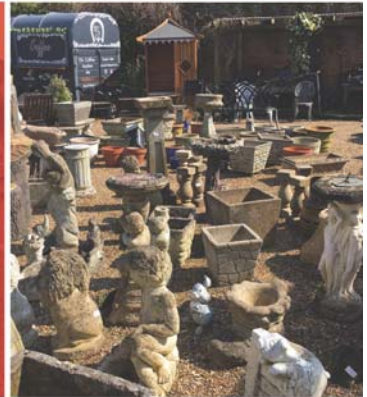


Tel: 01372 274400

Farm Lane, Ashted, Surrey KT21 1LY
info@rainbowgardennurseries.com



**10% off
Plants***
for
**Horticultural
Society
Members**



Open
Mon – Sat
9am-6pm
Sunday
10am -4pm



Traditional Plant Nursery
Bedding, Herbaceous
and Shrubs
Retro Junk Section
Garden Treasure Trove

EARLY SUMMER SHOW

AT THE COMMUNITY HALL, BANSTEAD, SM7 3AJ

JUNE 15, 2024

SATURDAY

JUNE 21, 2025

Entries by telephone or written to the Hon. Show Secretary or Assistant Show Secretary on or before the Wednesday preceding the Show by 8.00 p.m. For details see Page 1.

Exhibits to be staged between 9.30 a.m. and 11.00 a.m. on the Saturday of the Show.

No Entry Fee. Judging to commence at 11 a.m.

Open to the Public at 2.00 p.m.

Prize Giving at 5.00 p.m.

Exhibitors should read "Show Regulations", "Show Notes" and "Show Tips" on pages 3 to 6.

Class

1. New Exhibitors. Flowers 1 kind, 1 vase.
2. New Exhibitors. Rose, 1 stem.
3. Rose, large flowered, 1 stem.
4. Rose, 1 specimen bloom, 1 stem.
5. Roses, large flowered, 2 stems, 1 vase.
6. Roses, 6 specimen / modern blooms, 1 stem of each, not less than 3 cultivars. To be shown on an exhibition board. The size of the board shall be 102mm (4 ins.) high in front, 457mm (18 ins.) from front to back and 305mm (12 ins.) wide.
7. Roses, cluster flowered, 1 stem.
8. Roses, cluster flowered, 3 stems, 1 vase.
9. Rose, single, 1 stem (blooms to have not more than 7 petals).
10. Roses, miniature / patio, 2 stems, Exhibitor's own container.
11. Rose, modern / shrub rose, 1 stem.
12. Roses, modern / shrub rose, 3 stems, 1 vase.
13. Roses, other than those falling in other classes, 3 stems, 1 vase.
14. Rose, 1 stem, any variety, judged for fragrance only, by public ballot up to one hour before prize giving.
15. Sweet Peas, 6 stems, 1 vase.
16. Sweet Peas, 12 stems, 1 vase.
17. Pansies, 6 stems. Staging provided.
18. Violas, 6 stems. Staging provided.
19. Annuals in flower, 1 vase, 1 or more kinds. (See Show Regulation 9.)
20. Biennials in flower, 3 stems, 1 vase. 1 or more kinds.
21. Pinks, self, 3 stems, 1 vase.
22. Pinks, laced, 3 stems, 1 vase.
23. Pinks, bi-colour or fancy, 3 stems, 1 vase.
24. Carnations, perpetual flowering, 3 stems, 1 vase.
25. Carnation, 1 specimen bloom, 1 stem, 1 vase.
26. Delphinium, 1 spike,
27. Delphiniums, 3 spikes, in individual vases.

} Excluding perennial varieties

} See page 29

28. Delphinium florets, 6, staging optional.
29. Iris, bearded, 1 stem, 1 vase.
30. Iris, sibirica, 1 stems, 1 vase.
31. Iris, any other kind, 1 stem, 1 vase.
32. A vase of Irises, quality of flowers and presentation to be taken into account, Exhibitor's own container.
33. 6 hosta leaves, 1 vase.
34. Alliums, including Notscordium, 3 stems, 1 vase.
35. Peonies, 3 stems, 1 vase.
36. Clematis, 1 vase.
37. Herbaceous Perennial flowers, 1 kind, not more than 5 stems, 1 vase, excluding flowers for which classes are provided.
38. Herbaceous Perennial flowers, not less than 3, nor more than 5 kinds, 1 vase.
39. Ornamental Grasses and/or sedge, 1 vase.
40. Ornamental foliage, 1 kind, 1 vase.
41. A tree or shrub in blossom, 1 kind, excluding Clematis, 1 vase.
42. Mixed shrubs, not more than 5 kinds, 1 vase.
43. Mixed flowers, 1 vase.
44. A specimen flower in a frame, frame provided, inside measurement 168 x 117mm.
45. A hanging basket of flowers and/or foliage. Basket not to exceed 358mm (14 ins.). Support will be provided.
46. A planting of flowers and/or foliage in a container not to exceed 508mm (22 ins.).
47. A planting of Herbs, in a container not exceeding 305mm (12 ins.).
48. Lettuce, 2 heads.
49. Rhubarb, without leaves, 3 stems. (see show tips)
50. Any other vegetable (see page 36).
51. Culinary herbs, one or more kinds, 1 vase.
52. Soft Fruit, 1 dish (see page 37).
53. A pot-grown Pelargonium in a pot not to exceed 184mm (7¼ ins.).
54. A pot-grown Orchid in a container not to exceed 184mm (7¼ ins.).
55. A pot-grown plant in flower (excluding those specified) in a pot, not to exceed 184mm (7¼ ins.).
56. A pot-grown foliage plant (excluding those in other classes), in a pot not to exceed 184mm (7¼ ins.).
57. A pot-grown carnivorous plant, in a pot not to exceed 184mm (7¼ ins.).
58. A pot-grown plant in flower, in a pot to exceed 184mm (7¼ ins.) but not to exceed 229mm (9 ins.).
59. A pot grown Fern. Any size pot.
60. One Cactus or other Succulent in a pot or pan not exceeding 184mm (7¼ ins.).
61. A collection of pot grown plants to be arranged on a 915mm (3 ft.) frontage of tabling, presentation to be taken into account.
62. A horticultural hiccup.

63. An arrangement of Miniature or Patio Roses, space allowed 256mm (10 ins.). Exhibitor's own container. Rose foliage only.
64. An arrangement of flowers in Exhibitor's own container, any natural foliage, frontage 610 20mm (2 ft.).
65. Miniature flower exhibit not to exceed an overall measurement of 102mm (4 ins.) N.P.M.
66. A child's wedding circlet.
67. ROSES. An exhibit not more than 5 blooms, any foliage. N.P.M. Space allowed 610mm (2 ft.). Flowers may be purchased.
68. 2024. "ANYONE FOR TENNIS" (an Exhibit) } N.P.M.
 2025. "AT THE RACES" (an Exhibit) } Height Unlimited
 Flowers or Vegetables may be purchased. Space allowed 610mm (2 ft).
69. A Marmalade Cake (see Recipe page 21).
70. A Victoria Sandwich, filled, with dusting.
71. English Madeleines, 3.
72. Ginger Muffins, 3. (see Recipe on page 21).
73. Chocolate Chip Cookies, 5. (see Recipe on page 21).
74. For males only. Chocolate Chip Cookies, 5 (see Recipe on page 21).

JUNIOR CLASSES Juniors of 3 years but under 16.

Prizes will be awarded to those gaining Firsts, Seconds, and Thirds.

3 years or over but under 5 years.

75. A planting of cress.
76. A vegetable character.

5 years or over but under 8 years.

77. A decorated flower pot / bookmark.
78. An insect made from recycled material.

8 years or over but under 16 years.

79. Design a poster to a local event in any medium.
80. Chocolate Chip Cookies, 3.

3 to 16 years

81. Planted crockery (see rule 4).
82. Recycled bottle craft.
83. A bowl of floating flowers.

JUST FOR FUN

All Ages

84. The longest stick of rhubarb.

AN ITEM OF INTEREST

Not covered in horticultural classes, which the owner considers to be of general interest, with notes.

The Show Secretary is to be notified of the exhibit.

All members are encouraged to donate any spare produce to the sales table.

LOOKING FOR

HIGH QUALITY PRINTING SERVICES?



COPYING



MAILING



LAMINATING



BINDING



BUSINESS
STATIONERY



PLAN
PRINTING



POSTER
PRINTING



SCANNING
A10 - A1

FOR BUSINESS OR PERSONAL PRINTING CALL, EMAIL OR VISIT US IN OUR STORE

UNIT 6, EPSOM DOWNS METRO CENTRE, WATERFIELD, TADWORTH, KT20 5LR

Tel: 01372 740 113

@pixel.digital.printing

Email: sales@pixeldigitalprinting.com

www.pixeldigitalprinting.com

Autumn show Class 4 - Two and one (open to all)

Many exhibitors may not be able to produce three or more show quality specimens of a particular kind but can produce two; so here is your opportunity to show less than in the normal schedule.

Show at least 2 of a kind of any fruit or vegetable plus 1 stem of a specimen flower. e.g Two apples or potatoes + a dahlia , or 2 stems of specimen flowers and 1 vegetable or fruit.

CLASS 63 - Spring Show

Oat Bread

75g self-raising flour
50g wholemeal self-raising flour
1 tsp salt
50g unsalted butter, diced
1 tbsp dark soft brown sugar
100gm fine oatmeal

200-250ml buttermilk

Equipment
A 500g loaf tin

Heat the oven to 200°C/Gas 6. Grease a 500g loaf tin and line with baking parchment. Mix the flour and salt together in a bowl, then rub in the butter with your fingertips until the mixture resembles fine breadcrumbs. Stir in the sugar and oatmeal, then mix enough buttermilk to form a wet paste. Transfer the mixture to the prepared tin and smooth the surface. Bake for about 45 minutes, until the loaf has a golden crust and sounds hollow when tapped on the base. Leave to cool on a wire rack.

CLASS 69 - Early Summer Show

Marmalade Cake

110g Margarine/Butter
27g cut peel
90ml of water
60ml orange marmalade
Pinch of salt

2 large eggs
275g self-raising flour
110g castor sugar
55g chopped walnuts
Grated rind of orange

Grease and flour approx. 7" tin. Cream fat and sugar, beat in egg yolks until very light. Add and stir in marmalade, orange rind, mixed peel and nuts. Add sifted flour and salt alternately with water and beat smooth. Fold in stiffly beaten egg whites. Turn into prepared tin and bake for 1 hour or until skewer comes out clean. Gas 3-4, Electric 350-375°F or 160-180°C.

CLASS 72 - Early Summer

Ginger Muffins

60g unsalted butter
50g soft light brown sugar
2tbsp golden syrup
2tbsp dark treacle
2tsp ground ginger

80 ml whole milk
1 large egg beaten
2 pieces of stem ginger in syrup well drained and chopped
115g self raising flour

Pre heat oven to 180 C (170 C fan)/gas mark 4. Line muffin tin with paper cases. Place butter, sugar, syrup, treacle and ground ginger into a sauce pan over a medium/low heat and heat gently until butter has melted and blended with the other ingredients stir well and remove from heat. Set aside to cool. Beat the egg and milk together stir into the cooled mixture with the stem ginger. Sift the flour over the top and fold it in until well combined, spoon into six muffin cases. Bake for about 20minutes until well risen and they spring back when lightly pressed. leave in muffin tin for a couple of minutes before turning out and cooling on a wire rack.

CLASS 73 & 80 - Early Summer Show

Chocolate Chip Cookies

225g self-raising flour
75g granulated sugar
110g margarine/butter

110g golden syrup
75g plain chocolate
2 level teaspoons bicarbonate of soda

Sieve flour and bicarbonate, rub in fat. Add sugar and chocolate (cut into small pieces) Knead all together with the syrup (slightly warmed) to an evenly mixed dough. Make into 2 long rolls and cut each into 16 pieces. Flatten slightly and bake on a greased tin in a moderate oven 180°C (gas mark 4) (350°F), for approximately 10-15 minutes, until golden brown.



2024 Programme of Events and Shows

Full details will be notified prior to the date on our website.

February

Thursday 15th 10am Coffee Morning £1/£2

Andy Morriss: Getting the Garden ready for Spring.

Back by popular demand, Andy Morriss of Wallington Nurseries.

After a short talk there will be time to ask questions of this expert nurseryman.

Saturday 24th Key note speaker. Doors open 2pm

Ticket holders only.

Charlie Dimmock: Water in the Garden and behind the scenes.

March

Friday 22nd Cherrill Sands: Gardens of Surrey £1/£3

A highly recommended evening lecture - giving you time to plan your trips for the year. Evening lecture 7.30pm

April

Saturday 6th 2-5pm

Spring Flower Show with Mayor £0/£2

May

Saturday 25th 2 -5pm

Mini show and Open Day with community friends free entry to all

June

Wednesday 12th Members' Coach trip: 9.30am **Waterperry Gardens (full day)**

Nr. Oxford - details on Newsletter and Website (£ tbn)

Saturday 15th 2-5pm

Early Summer Flower Show £0/£2

July

Saturday 6th 10.30-3pm

Banstead Village Fair: see us in The Orchard, High Street, Banstead

Wednesday 10th 2-5pm Afternoon Tea

Bob Charman: *Violas and Volcanos* - an illustrated talk from Bob's wide travels.
Cream Tea provided by Signature £2/£3

Saturday 27th 2-5pm

Summer Show £0/£2

September

Saturday 14th 2-5pm

Autumn Show £0/£2

October

Saturday 5th 10am - 1pm

Banstead Charities Christmas Event. BHS is supporting Perennial with cards.

Friday 11th 7.30pm

Peter Almond: *Plants Have feelings too* Evening Lecture £1/£3

November

Saturday 9th 2-5pm

Late Autumn Show £0/£2

Wednesday 13th 2-5pm

Afternoon AGM and social event

December

Wednesday 4th 2-4pm

Xmas Quiz and afternoon tea £1/£2

NOTES

Entry fees given as member/ non-member

Entry to talks and lectures includes refreshments.

Our flower shows offer low-priced home-made refreshments,
plant sales, raffle and members' prize draw.



Banstead Horticultural Society

Is proud to contribute to and support Banstead Village in Bloom



We and many other members of the Community are working hard to make Banstead a cleaner, greener, safer and more beautiful village in which there is a growing sense of community pride ... and community pride in what we grow

www.bansteadhorticulturalsociety.com or www.bvib.co.uk



Banstead Combined Charities Christmas Event

Saturday 5th October 2024

9.30am to 1.00pm

The Community Hall, Park Road, Banstead



Banstead Horticultural Society will be supporting Perennial the Gardeners Charity at this event buy Christmas cards and gifts from us and many other charities

Refreshments

**Ample free parking
20p entrance fee**

Generous Raffle



Organised by
Banstead Community Association
Registered Charity No 304970

CLASS 74 - Summer Show

Raspberry Loaf Cakes

3 medium eggs
then their weight in caster sugar
Unsalted butter
Plain flour, sifted

½ tsp baking powder
1 tsp vanilla essence
300g raspberries

Use mini loaf moulds or paper muffin cases or a greased bun tray, preheat the oven to 160°C/315°F/ Gas mark 2½. Put the butter and sugar in a mixing bowl and beat until pale and creamy. Clean the sides of the bowl with a spatula, mix again and then beat in the eggs one by one. It may curdle a little. Stir in the vanilla, then fold in the flour and baking powder using a knife - you will have a rich, thick batter. Spoon into the moulds, then smooth the surface with a spoon. Press three raspberries into each cake and then bake for about 35 to 40 minutes. The cakes are ready when an inserted skewer comes out clean.

CLASS 96 - Autumn Show

Apricot Brandy Slices

90g/3oz chopped dried apricots
2 tablespoons brandy
125g/4oz dark chocolate
4 tablespoons butter

3 tablespoons milk
1 egg
60g sugar
90g plain flour

For Icing: 60g dark chocolate, 1 tablespoon milk, 250g icing sugar, 1 tablespoon butter.

Soak apricots in brandy for 15 minutes. Melt together chocolate and butter, stir in all other ingredients for the slice. Spoon into greased and lined baking tray, 18 x 27cm (7" x 11") or similar, and bake at 180°C/250°F/Gas Mark 4 for 12 - 15 minutes. To make icing, melt together chocolate and milk, and blend in icing sugar and butter. Spread over slice when cool. Cut into squares or rectangles.

CLASS 92 & 97 - Autumn Show

Barm Brack

300ml cold tea
100g soft brown sugar
1 egg

350g mixed dried fruit
275g self-raising flour

Put tea, sugar and dried fruit in a bowl, cover and leave to soak overnight. Tea that has been left over during the day can be saved and used. Well grease a 900g (2lb.) loaf tin.

Beat the egg and stir into the flour to make a smooth mixture. Stir in the rest of the ingredients. Turn into tin, and bake in a moderate oven for about 1 hour 45 minutes. Turn out and cool on a wire tray.

CLASS 59 - Late Autumn Show

Traditional Dundee Cake

Grated zest of 1 orange
225g plain flour
150g spreadable butter
3 large eggs
175g currants
50g glacé cherries, rinsed dried and cut in half
2 level teaspoons ground almonds.

Grated zest of 1 lemon
1 level teaspoon baking powder
150g golden caster sugar
1 dessert spoon milk, if needed
175g sultanas
50g mixed candied peel, finely chopped

For the topping 60g whole blanched almonds.

Cooking and equipment.

Use an 18cm loose based round cake tin, buttered with base and side lined.

Pre heat the oven to 170C gas mark 3.

First of all sift the flour and baking powder into a roomy mixing bowl, lifting the sieve quite high to give the flour a good airing as it goes down. Then simply add the butter, caster sugar and eggs and, using an electric hand whisk, combine them for about 1 - 2 minutes until you have a smooth dropping consistency. If it seems too dry, add a dessert spoon of milk.

Next fold in all the other ingredients: currants, sultanas, cherries, mixed peel, ground almonds and orange and lemon zest. Now spoon the mixture into the prepared cake tin, spreading it out evenly with the back of the spoon. Then, carefully, arrange the whole almonds in concentric circles over the top - but drop them on very lightly (if you press them down too hard they will disappear during the cooking).

Place the cake near the centre of the oven and bake for 1 hour 45 minutes or until the centre is firm and springy to touch. Allow it to cool before taking it out of the tin. Dundee cake deeps very well in an airtight tin and tastes better if it's kept a few days before cutting.

CITY & COUNTRY LANDSCAPES UK LTD

Our reputation is based upon being the best company around for quality, craftsmanship, competitive prices and customer services.

PATIOS • LANDSCAPES • BLOCK PAVING • CRAZY PAVING • GRAVEL
TARMAC - RED & BLACK • PEA SHINGLE • FENCING • TURFING/GRASS
• PAINTING • UPVC GUTTERS • PEBBLE DASHING
• ALL TYPES OF BUILDING WORK • 7 DAY COOLING OFF PERIOD

**FREE ESTIMATES • ALL WORK GUARANTEED
ESTABLISHED OVER 30 YEARS**

**FREEPHONE: 0800 320 1415 • MOBILE: 07951 343 192
EMAIL: mileyconnors@btinternet.com**

BANSTEAD FLOWER CLUB

Invite you to join them for their 2024/25 programme.

We are a friendly, welcoming flower club affiliated to NAFAS.

Monthly meetings and demonstrations
by NAFAS national and area demonstrators.

Flower arranging classes for all abilities.

Monthly members' competition, sales table, raffle and refreshments

New members and visitors always welcome.

*We meet at 1.15 pm for 2pm on the 4th Wednesday of every month
(EXCEPT December and January)*

at Banstead Community Hall, Park Road, SM7 3AJ

Visitors to area show £8, Visitors to national shows £12

*www.surreynafas.org.uk/banstead-flower-club
email: bansteadflowerclub@hotmail.co.uk*

SUMMER SHOW

AT THE COMMUNITY HALL, BANSTEAD, SM7 3AJ

JULY 27, 2024

SATURDAY

JULY 26, 2025

Entries by telephone or written to the Hon. Show Secretary or Assistant Show Secretary on or before the Wednesday preceding the Show by 8.00 p.m. For details see Page 1.

Exhibits to be staged between 9.30 a.m. and 11.00 a.m. on the Saturday of the Show.

No Entry Fee. Judging to commence at 11 a.m.

Open to the Public at 2.00 p.m.

Prize Giving at 5.00 p.m.

Exhibitors should read "Show Regulations", "Show Notes" and "Show Tips" on pages 3 to 6.

Class

1. New Exhibitor. Flowers, 1 kind, 1 vase.
2. New Exhibitor. Vegetables, one of each of 3 kinds (see page 40).
3. New Exhibitor. A pot grown plant in a pot not to exceed 184mm (7¼ ins).
4. New Exhibitor. An arrangement of flowers, space allowed: 610mm (2 ft.).
5. Rose(s), large flowered, 1 stem.
6. Roses, large flowered, 3 stems, 1 vase.
7. Roses, cluster flowered, 1 stem.
8. Roses, cluster flowered, 3 stems, 1 vase.
9. Roses, modern / shrub roses, 3 stems.
10. Roses, other than those falling in other classes, 3 stems, 1 vase.
11. 'Cycle of Bloom'. 1 vase, 3 stems showing "the bud", "the perfect bloom" and "the blown bloom", one variety.
12. Sweet Peas, 6 stems, 1 vase.
13. Sweet Peas, 12 stems, 1 vase.
14. Sweet Peas, 3 cultivars, 6 stems of each, 3 vases.
15. Annual in flower, excluding Sweet Peas, 1 kind 1 vase. (See Show Regulation 10).
16. Annuals in flower, more than 1 kind, 1 vase. (See Show Regulation 10).
17. Pinks, 3 stems, 1 vase. (See page 29)
18. Carnations, 3 stems, 1 vase.
19. Carnation, 1 specimen bloom, 1 stem, 1 vase.
20. Begonia, 1 bloom, 1 vase or Exhibitor's own container.
21. Dahlias, 3 stems, 1 vase.
22. Fuchsias, 6 single blooms. Staging provided.
23. Fuchsias, 6 double or semi double blooms. Staging provided.
24. Perennial Sweet Peas, 1 vase.
25. Gladioli, 1 spike, 1 vase.
26. Perennial Phlox, 3 stems, 1 vase.
27. Perennials other than those specified, 1 kind, 1 vase.

} Excluding perennial varieties

28. Herbaceous Perennial flowers, not less than 3 nor more than 5 kinds, 1 vase.
29. Herbaceous Perennial flowers, 3 kinds, each in a separate vase.
30. Hydrangeas, 3 stems, 3 heads, 1 vase.
31. Tree or shrub in blossom. 1 kind, excluding Hydrangeas, 1 vase.
32. A foliage tree or shrub, one kind, 1 vase.
33. Flowers, other than those specified, one or more kinds, 1 vase or Exhibitor's own container.
34. Mixed flowers, 1 vase.
35. A specimen flower in a frame, frame provided, inside measurement 168 x 117mm.
36. Banstead Gardener's Challenge. Details to be notified by circular.
37. A planting of flowering and/or foliage plants grown in a hanging container not to exceed 358mm (14 ins.). Support will be provided.
38. A planting of flowering and/or foliage plants in a container not to exceed 508mm (22 ins.).
39. Potatoes, 5.
40. Peas, 9 Pods.
41. Beans, Dwarf French, 6 pods.
42. Cucumbers, 2.
43. Any other Salad Vegetables, 1 kind. (those marked with an asterisk on Page 36)
44. Courgettes, 3.
45. Any other vegetable (see page 41).
46. A collection of vegetables, 3 kinds (see page 41). Space allowed 457mm. (18 ins.), boards permitted.
47. Culinary Herbs, 4 kinds exhibited separately in water, (kinds to be named).
48. Gooseberries, 1 dish (see page 42).
49. Blackcurrants, bunches, 1 dish (see page 42)
50. Red or White Currants, bunches, 1 dish (see page 42).
51. Soft Fruits, 3 dishes, 3 kinds (see page 42).
52. Any other fruit (see page 42).
53. 'SUMMER HARVEST'. A display comprising at least 2 of the following items: vegetables, fruit, flowers or pot grown plants. To be arranged on a 915mm (3 ft) frontage of tabling. Presentation to be taken into account, accessories, cloths or boards may be used.
54. A pot grown Orchid, in a container not to exceed 184mm (7¼ ins.)
55. A pot grown Pelargonium, in a pot not to exceed 184mm (7¼ ins.)
56. A pot grown Begonia, in a pot not to exceed 184mm (7¼ ins.).
57. A pot grown Fuchsia, in a pot not to exceed 184mm (7¼ ins.).
58. A pot grown plant in flower, in a pot not to exceed 184mm (7¼ ins.). Excluding those in other classes.
59. A pot grown foliage plant, in a pot not to exceed 184mm (7¼ ins.).
60. A collection of flowering pot plants, to be arranged on 915mm (3 ft) frontage of tabling. Accessories, cloths or board may be used.

61. A collection of foliage pot plants (see Class 60).
62. A horticultural hiccup.
63. An arrangement of flowers, in Exhibitor's own container. Any natural foliage. Space allowed 610mm (2 ft.).
64. An arrangement of foliage in Exhibitor's own container. Space allowed 610mm (2 ft.).
65. A miniature flower exhibit, not to exceed an overall measurement of 2012mm (4 ins.) N.P.M.
66. A buttonhole, main flower may be purchased.
67. An Exhibit in an unusual container, N.P.M. in exhibitor's own container. Flowers may be purchased. Space allowed: 256mm (10 ins.). To be judged by public ballot up to one hour before prize giving.
68. "GREEN AND WHITE" N.P.M. An exhibit in Exhibitor's own container. Space allowed 610mm (2 ft.). Flowers may be purchased.
69. 2024 'OLYMPIAD'
2025 'ON THE RIVER'
An exhibit. N.P.M. Flowers may be purchased.

{ Space allowed
 610mm (2 ft.)
 Height unlimited

70. A homemade cordial (see Show Note 18) in a clear unbranded bottle.
71. A Lemon Drizzle cake.
72. A vegetable based cake.
73. Florentines, 3.
74. Raspberry loaf cakes, 3. (See recipe page 25).
75. Shortbread fingers, 5.
76. A decorated hat.
77. Something new from old (with explanatory notes).
78. 3 photographic prints of seasonal interest.

JUNIOR CLASSES, Juniors of 3 years but under 16.

Prizes will be awarded to those gaining Firsts, Seconds and Thirds.

79. A vase or planting of Summer flowers, 1 vase or exhibitors own container.
80. An item of cookery based on vegetables.
81. Origami craftwork.

ITEMS OF INTEREST

An item, either of horticulture or artwork which the owner considers to be of general interest, with notes. The Show Secretary is to be notified of the exhibit.

Pinks

“**Selfs**”, which must be of one clear colour.

Bi-colours, which must have two colours in concentric zones on every petal; the boundary between the colours should be clear.

Fancies, which may have any ground-colour and be marked or suffused with another contrasting colour or colours on every petal.

Laced Pinks, which may be double, or single with five petals, with unbroken laced markings on every petal.



Broadleaf



All Aspects of Arboriculture Undertaken

Felling  Pruning

Crown Thinning & Reduction

Stump Grinding  Planting, Hedge Cutting

All Arising Material Removed

Consultancy 

 Health and Safety Tree Surveys 

Please Call Us For A Free Quotation

01737 822 088

www.Broadleaftreeservices.co.uk

AUTUMN SHOW

AT THE COMMUNITY HALL, BANSTEAD, SM7 3AJ

SEPTEMBER 14, 2024

SATURDAY

SEPTEMBER 13, 2025

Entries by telephone or written to the Hon. Show Secretary or Assistant Show Secretary on or before the Wednesday preceding the Show by 8.00 p.m. For details see Page 1.

Exhibits to be staged between 8.00 p.m. and 9.00 p.m. on the Friday before the Show or between 8.00 a.m. and 11.00 a.m. on the Saturday of the Show.

No Entry Fee. Judging to commence at 11.00 a.m.

Open to the Public at 2.00 p.m.

Prize Giving at 5.00 p.m.

Exhibitors should read "Show Regulations", "Show Notes" and "Show Tips" on pages 3 to 6.

Class

1. New Exhibitors. Flowers, 1 kind, 1 vase.
2. New Exhibitors. Vegetables (see page 40).
3. New Exhibitors. Cookery, any item.
4. Two and one, open to all (see page 21).
5. Rose, large flowered, 1 stem.
6. Roses, large flowered, 3 stems, 1 vase.
7. Roses, cluster flowered, 1 stem, 1 vase.
8. Roses, other than those falling in other classes, 3 stems, 1 vase.
9. Annual Asters, 5 stems, 1 vase. (See Show Regulation 10).
10. Annual of Biennial in flower, 1 kind, excluding annual Asters, 1 vase. (See Show Regulation 10).
11. Annuals in flower, more than one kind, 1 vase. (See Show Regulation 10).
12. Annuals in flower, 2 kinds, 2 vases (see Show Regulation 10).
13. Dianthus, 3 stems, 1 vase.
14. Carnation, 1 specimen bloom, 1 stem, 1 vase.
15. Fuchsias, 6 single blooms. Staging provided.
16. Fuchsias, 6 double or semi double blooms. Staging provided.
17. Gladiolus, one spike.
18. Herbaceous Perennial flowers, 1 kind, excluding Dahlias and Chrysanthemums, 1 vase.
19. Hydrangea, 1 head, 1 vase.
20. Tree or shrub in blossom, 1 kind, 1 vase.
21. A foliage or tree or shrub, 1 kind, 1 vase.
22. A berried tree or shrub, 1 kind, 1 vase.
23. Mixed Flowers, excluding Dahlias, 1 vase.
24. A Specimen Flower in a frame, frame provided, inside measurement 168 x 117mm.
25. A plant of flowering and/or foliage plants in a hanging container, not to exceed 358mm (14"). Support will be provided.
26. A planting of flowering and/or foliage plants in a container, not to exceed 508mm (22").

EARLY FLOWERING CHRYSANTHEMUMS

27. Exhibition, blooms 3, not less than 2 cultivars, 1 vase.
28. Exhibition cultivar, 1 stem, 1 vase.
29. Exhibition cultivars, 3 stems, 1 vase.
30. Spray cultivars, 1 stem, 1 vase.
31. Spray cultivars, 3 stems, 1 vase.
32. Any other cultivar, 3 stems, 1 vase.

DAHLIAS, (1 bloom per stem)

(See page 41 for the usual limits in size, rings are available)

33. Decorative, 3 stems, 1 vase, 1 or more cultivars.
 34. Cactus, 3 stems, 1 vase, 1 or more cultivars.
 35. Waterlily, 3 stems, 1 vase, 1 or more cultivars.
 36. Ball, 3 stems, 1 vase.
 37. Pompon, 3 stems, 1 vase.
 38. Any other kinds, 3 stems, 1 vase.
 39. 1 specimen bloom, 1 stem. Any variety.
 40. Mixed. 5 stems.
-
41. Potatoes, white, 5.
 42. Potatoes, coloured, 5.
 43. Potatoes, 2 cultivars, 5 of each.
 44. Carrots, long-pointed, no foliage, 3.
 45. Carrots, other than long-pointed, no foliage, 3.
 46. Runner Beans, 10 Pods.
 47. French Beans, 10.
 48. Beet, no foliage, 3.
 49. Leeks, 3. (see page 40)
 50. Marrows or Gourds (see page 40).
 51. Courgettes, 3.
 52. Tomatoes, including medium or Beefsteak (see page 40).
 53. Tomatoes, small fruited and cherry cultivars, 10, must not exceed 35mm.
 54. Tomatoes, 1 truss, as grown.
 55. Tomatoes, 3 cultivars, 3 dishes (see page 40).
 56. Cucumbers, 2.
 57. Onions, grown from sets, 3.
 58. Onions, grown from seed, 3.
 59. Onions, 227g, 8ozs. (or under), 5.
 60. Shallots, pickling or exhibition, 10 (see page 40).
 61. Any other vegetable (see page 40).

62. Herbs, 1 vase, mixed.
63. A collection of vegetables, 4 kinds, to be shown on a 610mm (2 ft.) length of tabling (see page 40).
64. Banstead Gardeners Challenge. Details to be notified by circular.
65. Apples, Ellison's Orange, 5.
66. Apples, dessert, any other cultivar, 5.
67. Apples, Bramley, 5.
68. Apples, culinary, any other cultivar, 5.
69. Plums, 9 or Damsons, 6.
70. Soft fruit, 1 kind.
71. Any other fruit, 1 kind (see page 41).
72. A collection of fruit, 3 kinds, 3 dishes (see page 41).
73. A pot-grown Orchid, in a container not to exceed 184mm (7¼ ins.).
74. A pot-grown Fuchsia, in a pot not to exceed 365mm (12 ins.)
75. A pot-grown Begonia in flower in a pot not to exceed 184mm (7¼ ins.).
76. A pot-grown plant in flower, excluding those in other classes, in a pot not to exceed 184mm (7¼ ins.).
77. A Begonia grown for foliar effect, in a pot not to exceed 229mm (9 ins.).
78. A pot-grown foliage plant, excluding begonias, in a pot not to exceed 229mm (9 ins.).
79. One Cactus or other succulent, in a pot not to exceed 184mm (7¼ ins.).
80. An item of topiary or bonsai, in a pot not to exceed 610mm (24 ins.).
81. A collection of pot plants to be arranged on a frontage of 915mm of tabling, presentation to be taken into account.
82. A horticultural hiccup.
83. An arrangement of Dahlias, in Exhibitor's own container. Any natural foliage allowed. Frontage 610mm (2 ft.).
84. An arrangement of Flowers, in Exhibitor's own container. Any natural foliage allowed. Frontage 610mm (2 ft.).
85. A miniature flower exhibit in a box, not to exceed an overall measurement of 102mm (4 ins.) N.P.M.
86. A corsage, main flowers may be purchased.
87. 2024 'ELEGANCE IN GREEN AND GOLD'. An exhibit with two placements.
2025 An exhibit based on a poem (with poem displayed).
A modern arrangement, N.P.M. Frontage 610mm (2 ft). Flowers may be purchased.
88. FASCINATING FOLIAGE. N.P.M. An exhibit in Exhibitor's own container. To be viewed from all sides, frontage 610mm (2 ft.).
89. "AN EXHIBIT", based on accessories provided by the Society. Flowers may be purchased. Frontage 610mm (2 ft). Details from the Assistant Show Secretary.
90. For males only. An arrangement of flowers in an unusual container. Space allowed: 256mm (10 ins.).

91. An inced giner cake.
92. Barm Brack cake (see recipe on page 25).
93. Harvest plait. To be displayed on a board.
94. A savoury flan.
95. Cup cakes, decorated with icing, 3.
96. Apricot Brandy Slices (recipe on page 25).
97. For males only, Barm Brack cake (see recipe on page 25).
98. Fruit Jelly, small jar, about 170g (6 ozs).
99. Lemon Curd, small jar, about 170g (6 ozs).
100. Stone Fruit Jam, one jar, about 454g (1 lb).
101. Soft Fruit Jam, one jar, about 454g (1 lb).

} See note 16 on page 5

**A certificate will be awarded to the person
gaining the greatest number of points in the cookery classes.**

JUNIOR CLASSES

Name and Age to be stated on Bench Card.

Prizes will be awarded to those gaining Firsts, Seconds and Thirds.

3 years or over but under 5 years

102. A vegetable Snake.
103. Potato printing.

5 years or over but under 7 years

104. A vase of flowers, 1 vase or exhibitor's own container.
105. An item of Autumn craftwork, made from natural materials.

8 years or over but under 16 years

106. A picture in any medium.
107. A mini pizza.

3 to 16 years

108. Vegetables, one of each, 3 kinds.
109. A planted container.
110. Make a scarecrow.
111. A garden on a dish or plate.

JUST FOR FUN

All Ages

112. Longest fresh Runner Bean 1.
113. Funniest shaped vegetables.
114. Longest Marrow 1

ITEMS OF INTEREST

An item, either of horticulture or artwork, which the owner considers to be of general interest, with notes. The Show Secretary is to be notified of the exhibit.

Nork Motor Engineering

BANSTEAD

MOT & REPAIR CENTRE

- Servicing
- Mechanical repairs
- MOTs & Repair work
- Brakes & Clutches
- Welding & Air conditioning
- Diagnostics & Electrics



All Makes & Models, Cars & Light Vans

AFFORDABLE DEALER ALTERNATIVE

Tel: 01737 357636

**Qualified Engineers
who give Honest,
Professional Advice**



Retail Motor
Industry
Federation



VEHICLE TESTING STATION



www.norkmotors.co.uk

Nork Gardens, Off Nork Way, Banstead, SM7 1NZ

THE COTTAGE GARDEN

by GCW May 2017

*A cottage garden should produce,
As well as veggies, flowers and fruits,
Sufficient for the family.
Some food for butterfly and bee;
For hoverflies and other things
That feed on pests and use their stings
To combat bugs that eat the plants
Or otherwise destroy the chance
Of harvest home and celebration,
That helps to feed our Island Nation.
So we all hope this present show
Gives some ideas of what to grow,
No pampered or exotic shrubs,
Some basic things to grow in tubs,
Like mint that needs to be controlled.
But many things a tub will hold
Some changing with the different seasons
Succession planting has good reasons.
When it's decided what to grow
Then comes the turn of fork and hoe.
Just keep the secateurs in hand
Consistent weeding can be grand.
The exercise of hand and eye
Should help the gardener get by.
With climate change and weather signs,
Try not to fall behind the times.
One needs a philosophic trend
To work on steadily to the end.
Accept the trials that come our way
And hail successes so we may
At length, triumphant, pause to view
The plot, where there's still more to do!*

Excerpts from the English translation and chants of the Roman Missal © 2010, International Commission on English in the Liturgy Corporation. All rights reserved.

Scripture extracts from The Jerusalem Bible © 1966 by Darton Longman & Todd Ltd and Doubleday and Company Ltd.
Copyright music and texts are reproduced and streamed under One License 741092 or CCLI License 764144.

ADVERTISERS

The Society thanks all those who have advertised in this Schedule and it is hoped that members will support them whenever possible, at the same time mentioning The Banstead Horticultural Society.

LATE AUTUMN SHOW

AT THE COMMUNITY HALL, PARK ROAD, BANSTEAD, SM7 3AJ

NOVEMBER 4, 2024

SATURDAY

NOVEMBER 7, 2025

Entries by telephone or written to the Hon. Show Secretary or Assistant Show Secretary on or before the Wednesday preceding the Show by 8.00 p.m. For details see Page 1.

Exhibits to be staged between 8.00 a.m. and 11.00 a.m. on the Saturday of the Show.

No Entry Fee. Judging to commence at 11.00 a.m.

Open to the Public at 2.00 p.m.

Prize Giving at 5.00 p.m.

Exhibitors should read "Show Regulations", "Show Notes" and "Show Tips" pages 3 to 6.

Class

1. New Exhibitor. Chrysanthemums, 3 stems, 1 vase.
2. New Exhibitor. Fruit, 1 cultivar, 1 dish, 3.
3. New Exhibitor. Vegetables, one each of 3 kinds (see page 40).

CHRYSANTHEMUMS

4. Exhibition cultivars, 1 stem, 1 vase.
5. Exhibition cultivars, 3 stems, exhibited in 3 separate vases.
6. Single Cultivars, 3 stems, 1 vase.
7. Spray Cultivars, single flowered, 1 stem, 1 vase.
8. Spray Cultivars, single flowered, 3 stems, 1 vase.
9. Spray Cultivars, double flowers, 1 stem, 1 vase.
10. Spray Cultivars, double flowers, 3 stems, 1 vase.
11. Any other cultivar, 3 stems, 1 vase.

12. Flowers and/or seed heads, dried, 1 vase.
13. Flowers, 1 kind, greenhouse grown, 1 vase.
14. Flowers other than those specified, one kind, 1 vase or Exhibitor's own container.
15. A specimen flower in a frame, frame provided, internal measurement 168 x 117mm.
16. A planting of flowering and/or foliage plants in a container not to exceed 508mm (22 ins)
17. Ornamental grasses and/or sedge, 1 vase.
18. Evergreen foliage, 1 vase.
19. Decorative autumn foliage, tree or shrub, 1 vase.
20. A flowering tree or shrub, 1 kind, 1 vase.
21. A berried tree or shrub, 1 kind, 1 vase.
22. Flowers, mixed, 1 vase.
23. Carrots, 3.
24. Leeks, 3 (see page 40).
25. Peppers, hot, 6 or sweet, 3 (see page 40).
26. Onions, 3.
27. Onions, 227g (8 ozs.) or under, 5.
28. Shallots, pickling, or exhibition, 10 (see page 40).
29. Any other root vegetable, 3.
30. Any other vegetable (see page 40).

31. "Harvest Festival". A display comprising at least two of the following items: vegetables, fruit, flowers or pot-grown plants. The display to be arranged on a 915mm (3 ft.) frontage of tabling. Presentation will be taken into account. Accessories, cloths or boards may be used.
32. Apples, dessert, any cultivar, 5.
33. Apples, 2 dessert cultivars, 1 dish of each, 5 to a dish.
34. Apples, culinary, any cultivar, 5.
35. Apples 2 culinary cultivars, 1 dish of each, 5 to a dish.
36. Apples, 1 dish culinary, 1 dish dessert, 5 to a dish.
37. A collection of fruit 3 kinds, 3 dishes (see page 41).
38. Any other fruit (see page 41).
39. Pot grown Cyclamen in a pot not to exceed 184mm (7¼ ins.).
40. One cactus or other succulent, in a pot not to exceed 184mm (7¼ ins.).
41. A pot-grown plant in flower, excluding those in other classes, in a pot not to exceed 184mm (7¼ ins.).
42. A pot-grown foliage plant, in a pot not to exceed 184mm (7¼ ins.).
43. A pot-grown plant, in a pot to exceed 184mm (7¼ ins.) but not to exceed 229mm (9ins.).
44. A container grown orchid.
45. Ornamental grasses and/or sedge, in a pot not to exceed 184mm (7¼ ins.).
46. A planting of bulbs, corms, rhizomes or tubers, in a container not to exceed 305mm (12 ins.).
47. A collection of flowering, pot-grown plants, to be arranged on a 915mm (3 ft.) frontage of tabling. Accessories, cloths or boards may be used.
48. A collection of foliage pot grown plants. see Class 47.
49. A horticultural hiccup.
50. An arrangement of home grown flowers in Exhibitor's own container, not to exceed 256mm (10 ins.).
51. An arrangement of natural foliage and berries. Exhibitor's own container, to be viewed from all sides. Not to exceed 610mm (2 ft).
52. A miniature flower exhibit N.P.M. Not to exceed an overall measurement of 102mm (4 ins).
53. A Christmas table decoration. An exhibit, N.P.M. frontage 305mm (12 ins) flowers may be purchased. Christmas accessories may be used.
54. Chrysanthemums, an exhibit. N.P.M. Flowers may be purchased.
55. "EVERLASTING". An exhibit of dried or preserved plant material. N.P.M. Frontage 610mm (2 ft). Exhibitor's own container. Flowers may be purchased.
56. 2024 "NORTHERN LIGHTS" } An exhibit. N.P.M. Frontage 610mm (2 ft).
2025 "NATURES GLORY" } Flowers may be purchased. Height unlimited.
57. An exhibit of natural foliage. N.P.M. Frontage 610mm (2 ft). Material may be purchased.
58. Carrot cake, decorated.
59. A Dundee cake (see recipe on page 25).
60. A selection of sweets not less than 3, not more than 5 varieties, unwrapped.
61. Gingerbread biscuits, decorated, 5.
62. Mince Pies, (any kind), 5.
63. Cheese Bundles, 3.

64. Chutney, one jar, mature, about 454g (1 lb). See note 16, on page 5.
65. Pickle, one jar, mature, about 454g (1 lb). See note 16, on page 5.
66. A hand-made article featuring knitting or crochet.
67. A hand-made article featuring embroidery, tapestry or canvas work.
68. An article featuring lace or patchwork.
69. An article featuring feltcraft.
70. An item of craftwork, excluding sculpture, feltcraft or painting.
71. A painting or drawing in ink, crayon or pencil.
72. A painting or drawing in watercolour.
73. A painting or drawing in oil, acrylic or gouache.
74. A painting or drawing in any other medium.
75. A hand-made sculptural exhibit.
76. Decorated cones.
77. Seasonal item of craftwork.
78. For males only. An item of craftwork.
79. A collection of craftwork on a 915mm (36 ins) frontage of tabling.
80. A framed/mounted photograph of the plant kingdom. Not to exceed 310mm (12 in.). To be judged by Public Ballot up to 1 hour before prize-giving.

JUNIOR CLASSES

Prizes will be awarded to those gaining Firsts, Seconds and Thirds.

3 years or over but under 5 years

81. A home-made Christmas Card.
82. Gingerbread biscuits, 3 pieces.

5 years or over but under 8 years

83. A snowflake doily.
84. An item of craftwork featuring felt craft.
85. Pressed flowers.

8 years or over but under 16 years

86. A Painting or Drawing in any medium.
87. Pumpkin base baking.

3 to 16 years

88. A mini bug hotel.
89. A seasonal item of craftwork.
90. Decorated cones.
91. A collage of leaves.

JUST FOR FUN

92. The heaviest Pumpkin or Marrow.

ITEMS OF INTEREST

Horticultural or artwork, which the owner considers to be of general interest, with notes.

The Show Secretary is to be notified of the exhibit.

A certificate will be awarded for the best exhibit in the Craft Classes.

**UNLESS OTHERWISE STATED IN THE SCHEDULE, AN ENTRY MUST
CONSIST OF THE FOLLOWING:**

A dish of fruit and vegetables must consist of one cultivar only.

Vegetables	No. to dish	Points per dish
Beans, Broad and Long Pod	6	15
Beans, Runner	10	18
Beans, Dwarf French	10	15
*Beetroot, Globe and cylindrical	3	15
*Beetroot, Long	3	20
Broccoli, Sprouting shoots	12	15
Brussels Sprouts	6	15
Cabbages, Green, Red or Savoys, <i>to be shown with not less than 76mm (3") stalk</i>	2	15
Calabrese	5	15
Carrots, pointed, long & intermediate cultivars	3	20
Carrots, stump-rooted, ball & finger cultivars	3	18
Cauliflowers or Broccoli heads, <i>to be shown with not less than 76mm (3") stalk</i>	2	20
Celery, Trench	2	20
Celery, Self Blanching	2	18
Courgettes	3	12
*Cucumbers, House or Frame	2	18
*Cucumbers, Ridge and Outdoor	2	15
Garlic	3	12
Kale, leaves	6	10
Leeks, Blanched, Intermediate	3	20
*Lettuce, Butterhead, Cos, Crisp	2	15
Marrows, including Squashes	2	15
<i>Should not exceed 350mm (14 ins.) or 508mm (20 ins.) in circumference</i>		
Mushrooms	7	15
Onions, exhibition over 250gm (8oz)	3	20
Onions, 250gm (8oz) (or under)	5	15
Parsnips	3	20
Peas	9	20
Peas, mangetout or snap	9	15
Potatoes	5	20
Peppers, sweet (capsicums)	3	15
Peppers, hot (cayenne and chilli)	6	15
Pumpkin or Squash, Winter	1	10
Radishes (small salad)	6	12
Rhubarb, natural	3	12
Rhubarb, forced	3	15
Shallots, Pickling must not exceed 30mm	10	12
Shallots, Exhibition	10	18
Spinach, Seakale, Beet and Chard (Leaves)	10	12
Sweet Corn	2	18
*Tomatoes	5	18
*Tomatoes, "beefsteak" type	3	15
*Tomatoes, small-fruited & cherry cultivars	10	12
<i>Must not exceed 35mm</i>		

Fruit	No. to dish	Points per dish
Apples, cooking	5	18
Apples, dessert	5	20
Cherries, sweet	20	12
Damsons	6	8
Grapes (bunch)	1	20
Melon	1	20
Passion Fruit	5	12
Pears, cooking	5	16
Pears, dessert	5	14
Plums, cooking	9	18
Plums, dessert	9	20
Quinces	5	12

In collections of fruit, dessert and culinary varieties may be exhibited as separate dishes.

Dishes of Soft Fruit must not exceed:

Blackberries	15 fruits	12
Currants, black (on strigs)	227g (8ozs)	12
Currants, red and white (on strigs)	227g (8ozs)	12
Gooseberries	15 fruits	12
Loganberries, Tayberries & other hybrid canes	15 fruits	12
Raspberries	15 fruits	12
Strawberries	10 fruits	16
Worcesterberry, Blackcurrant & Goosebery hybrids	227g (8ozs)	12

Any exhibitor wishing to exhibit any kind not on this list should refer to the Show Secretary for specific guidance from the RHS show handbook.

DAHLIAS

Dahlia sizes are usually within the following limits:- (Maximum sizes shown in brackets)

Giant flowered - over 260mm in diameter.

Large flowered - between 220mm and 260mm in diameter (260mm)

Medium flowered - between 170mm and 220mm in diameter (220mm)

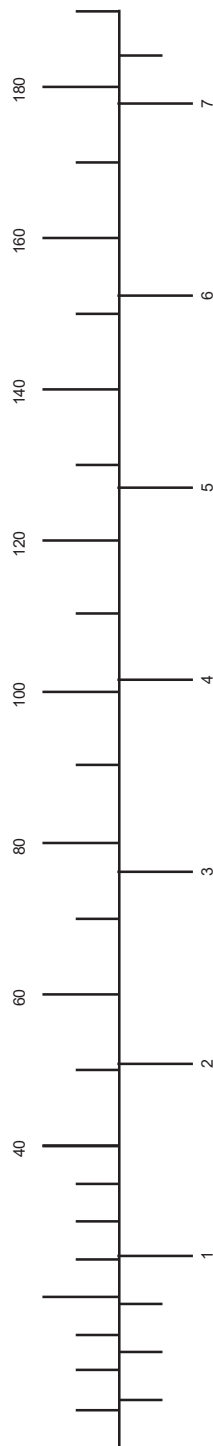
Small flowered - between 115mm and 170mm in diameter (170mm)

Small Ball Dahlias are usually between 115mm and 170mm in diameter.

Miniature flowered - not exceeding 102mm in diameter. (102mm)

Miniature flowered Ball Dahlias not exceeding 115mm in diameter.

Pompons - not exceeding 52mm in diameter. (52mm)



Buckland Nurseries Garden Centre

**A25 Reigate Road,
Buckland, RH2 9RE**



01737 242 990

bucklandnurseries.co.uk

Thomas Hogg & Son Ltd est. 1865