



VP INNOVATO HOLDINGS

Cervico Essential Mold





Introduction

The Essential Cervico Mold is a simplified version of the Cervico Premium Mold that works with the stock implant analogs available from the different implant companies.

As per the premium mold you can fabricate Cervico healing abutments and impression posts by utilizing one or two pieces prosthetic components, made out of titanium, or peek, or other suitable material as they come available by the implant companies.

The Essential mold incorporates wells with shapes that replicate the shape of the root trunk of different groups of teeth; a (anterior), p (premolars), m1 (lower molars), m2 (upper molars). Each shape is available in three sizes S (small), M (medium), L (large) and two options of symmetry: Centered (c) and off-centered (o).

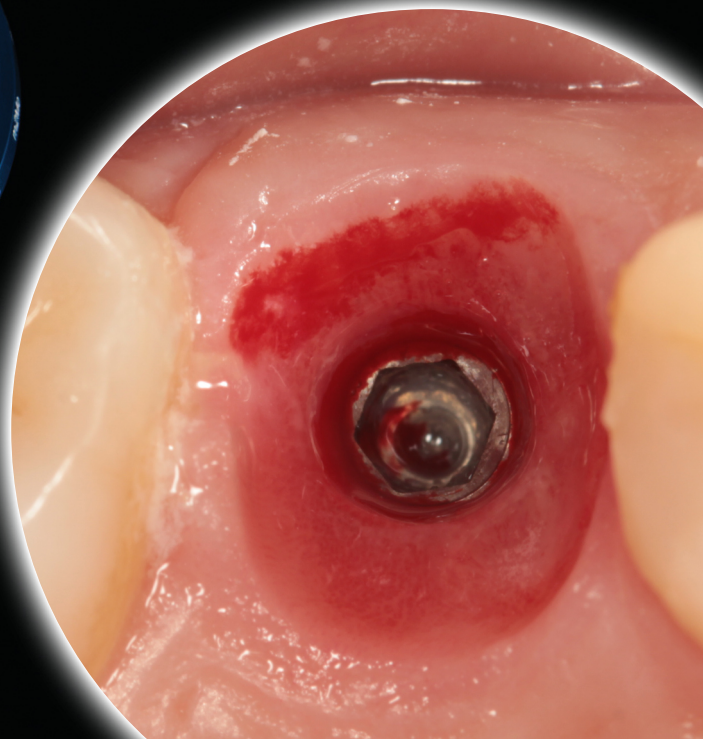
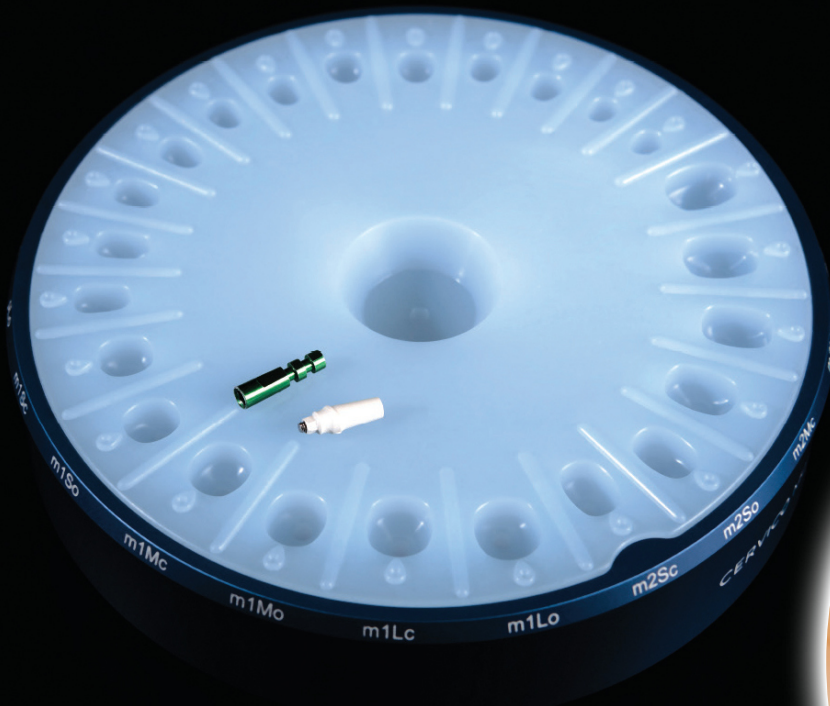
E.g. m1Lc: Lower molar, Large size, centered

m1Lo: Lower molar, Large size, off-centered

Each well presents on its frontal side a “tear” like extrusion. This extrusion functions as a reference mark for the buccal surface of the implant site.

During implant placement, ideally, the surgeon should orient the prosthetic connection of the implant buccally (e.g. flat seat of hex).

The same orientation of the prosthetic connection of the abutment or impression post into the silicone well of the mold must be applied as you can see in detail in the following instructional



Cervico Mold - Essential



Cervico healing abutment fabrication process

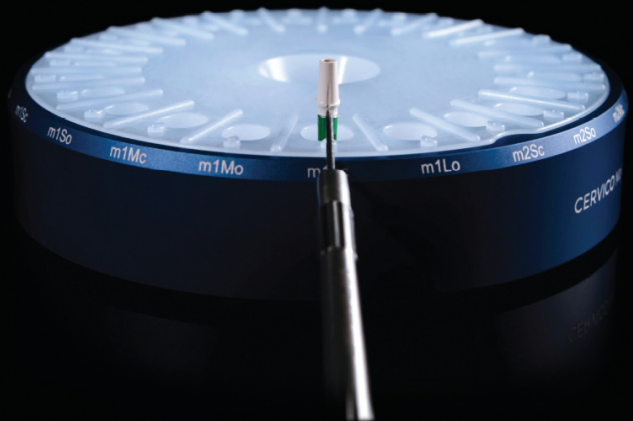
Connect the temporary abutment to the implant analog and insert into the desired well the system lab analog/temporary abutment. Utilize a push-in or screw-in movement in order for the lab analog to become embedded into the bottom hole of the well. Once the top surface of the abutment is level to the bottom surface of the well, you have reached the final vertical position.

Lastly, rotate the whole system (lab analog/temporary abutment) till the mark present on the temporary abutment, that corresponds to the proper position of the prosthetic connection, becomes aligned with the “tear” protrusion present on the front surface of the silicone well.

This final step is important in order for the shape of the healing abutment to correspond perfectly in space with the orientation of the prosthetic connection of the implant.

(E.g. Ideally the flat seat of the hex of the implant in the mouth should be oriented buccally, thus the flat seat of the hex of the temporary abutment or impression posts should also be oriented buccally. This buccal position is referenced by the “tear” mark on the silicone. In case the orientation of the prosthetic connection of the implant in the mouth is not towards the buccal then please follow the instructions of page 10).

Step 1



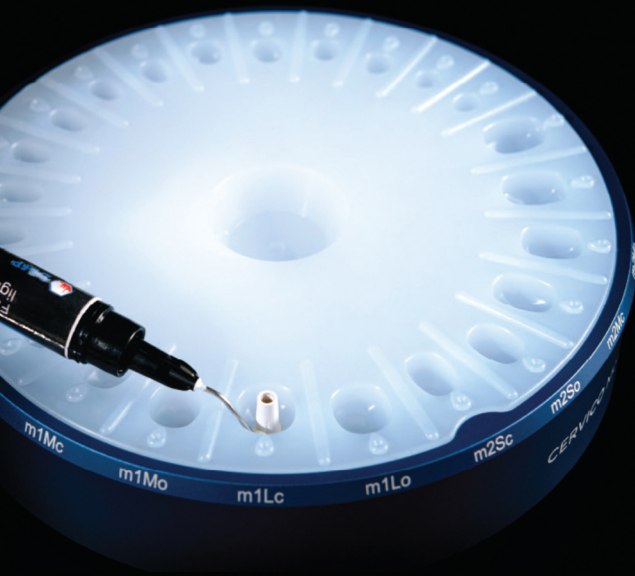
Step 2



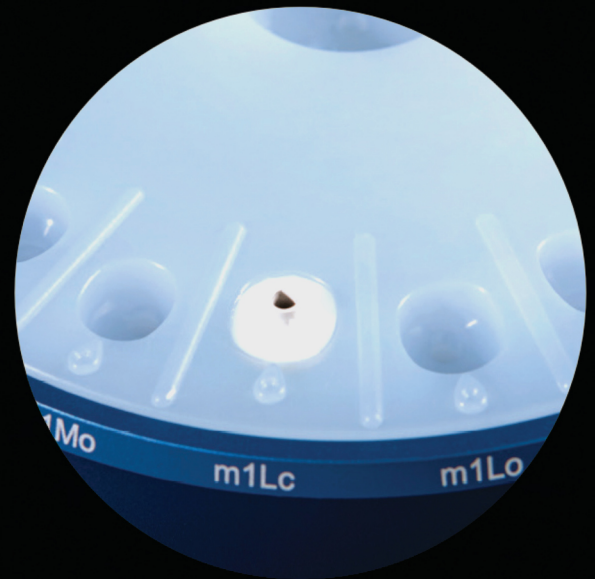


Cervico healing abutment fabrication process

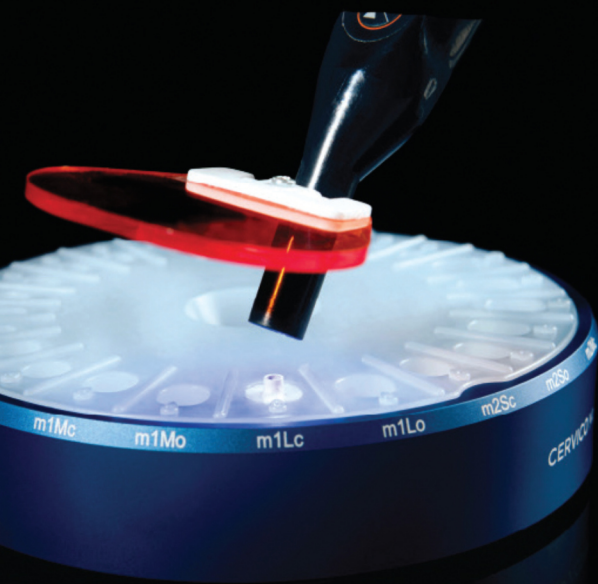
Fill the open space of the well with the composite resin material. For large shapes it is suggested to do this process in two increments in order to ensure proper light curing of the material. The duration of light curing is depended on the recommendations of the composite resin manufacturer and the light source specifications. In general a safe approach suggests a total time of 60 sec light curing inside the well and an additional light curing of 60 seconds after the custom healing abutment is fabricated and removed from the mold.



Step 3



Step 4



Step 5



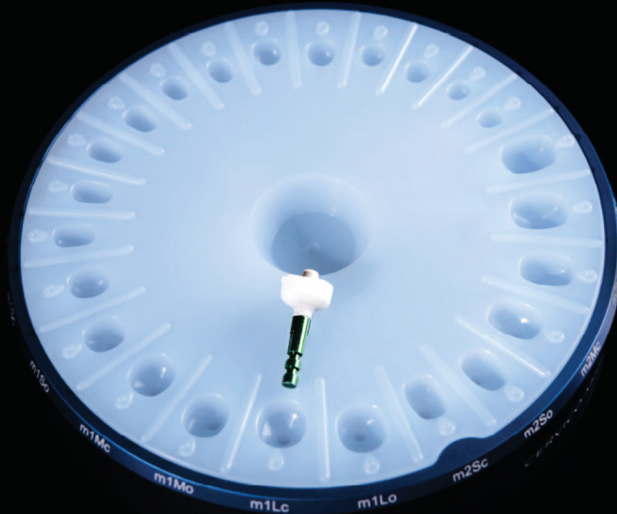
Cervico healing abutment fabrication process

Remove the system lab analog/cervico healing abutment from the mold with a pair of tweezers gently holding onto the remaining temp pillar and twisting it out of the mold. Alternatively, engage with the screw driver the retention screw of the abutment and rotate clockwise while at the same time pulling out the system lab analog/cervico healing abutment.

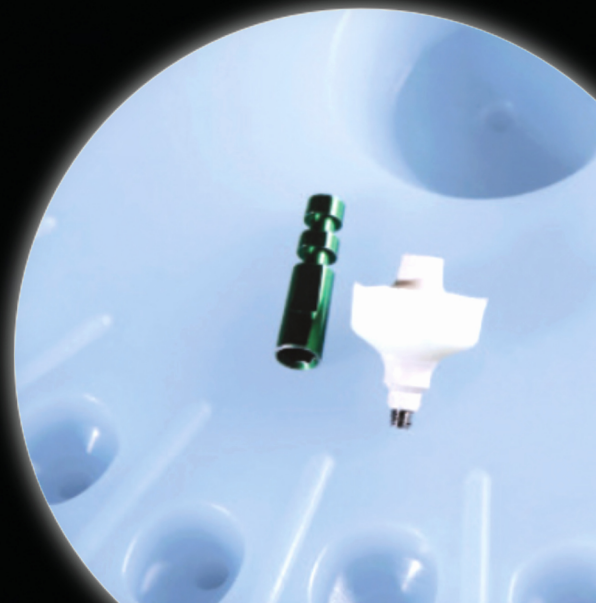
Proceed with polishing of the composite resin surface of the cervico healing abutment with polishing mops and polishing paste in order to obtain an even and smooth surface.

Disconnect the lab analog from the Cervico healing abutment and proceed with proper disinfection of the latter, prior to its clinical use. Disinfection methods follow the same standards as per disinfection of implant abutments and implant prostheses prior to their installation in the mouth.

Step 6



Fabricated custom Cervico healing abutment





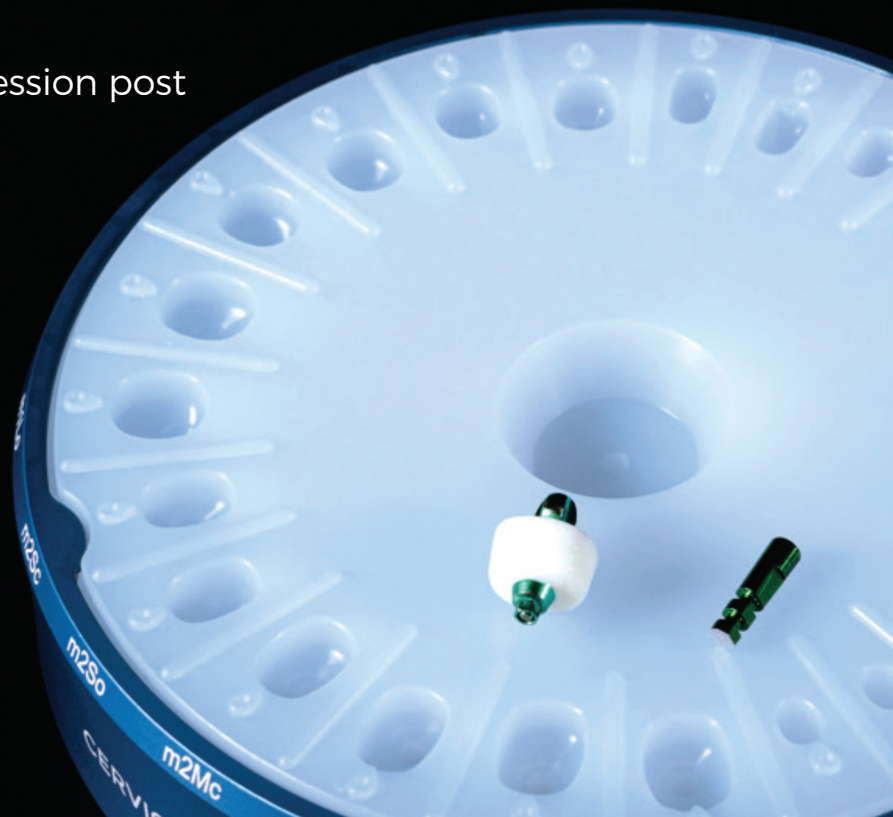
Cervico impression post fabrication process

Follow the exact same steps as per Cervico healing abutment fabrication, by utilizing a stock impression post (closed tray or open tray) instead of a temporary abutment.

Repeat steps 1-6



Fabricated custom Cervico impression post





Duplication Process

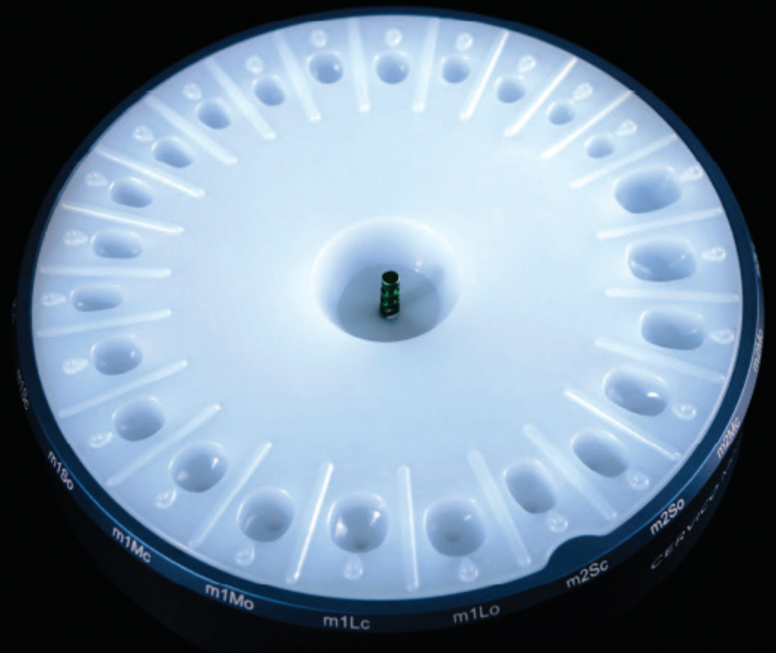
Duplication Process for fabrication of Cervico impression posts that replicate the sub-gingival portion of temporary prostheses or Cervico healing abutments that have been sub-gingivally modified.

The duplication process can be carried out by utilizing the large circular well in the middle of the silicon mold which is called duplication well.

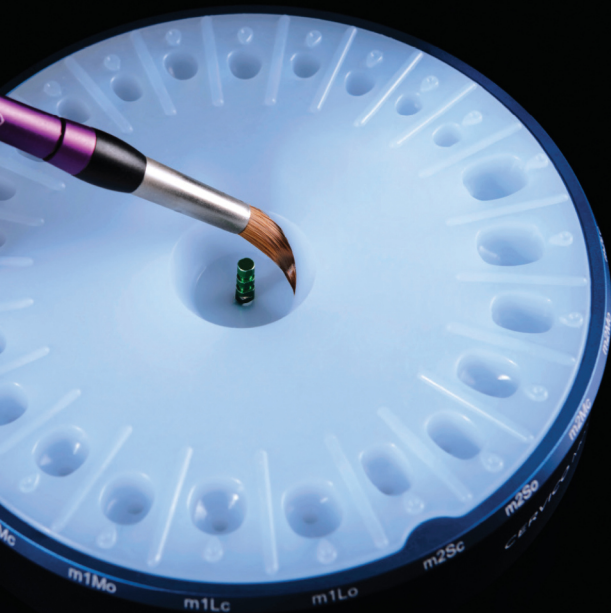
Important notice:

Coat the surface of the duplication well with some separating medium such as Vaseline to prevent adhesion of the silicone impression material to the silicone of the Mold.

Step 1



Step 2

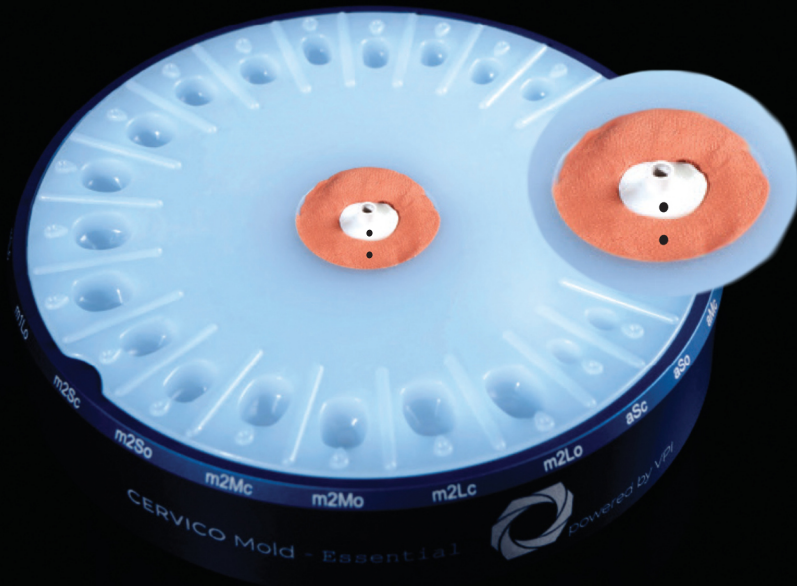




Duplication Process

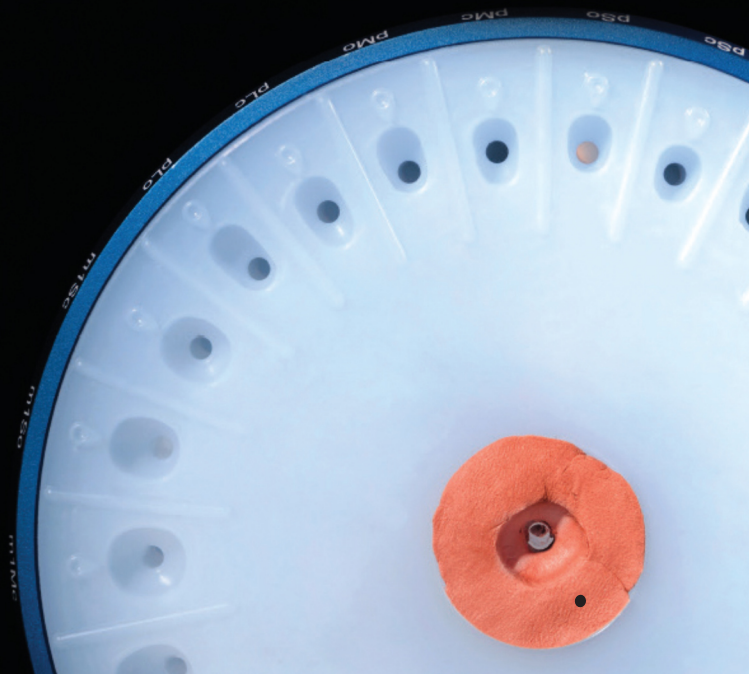
Step 3

Mark on the abutment surface the mid-buccal position. Install into the duplication well the system lab analog/temporary prosthesis, then fill the space with a silicone impression material and let it set. Following, mark on the silicone impression material the mid-buccal position.



Step 4

Remove the system lab analog/temporary prosthesis from the duplication well. A “customized” well now has been developed that will be used for the fabrication of the duplicate impression post.

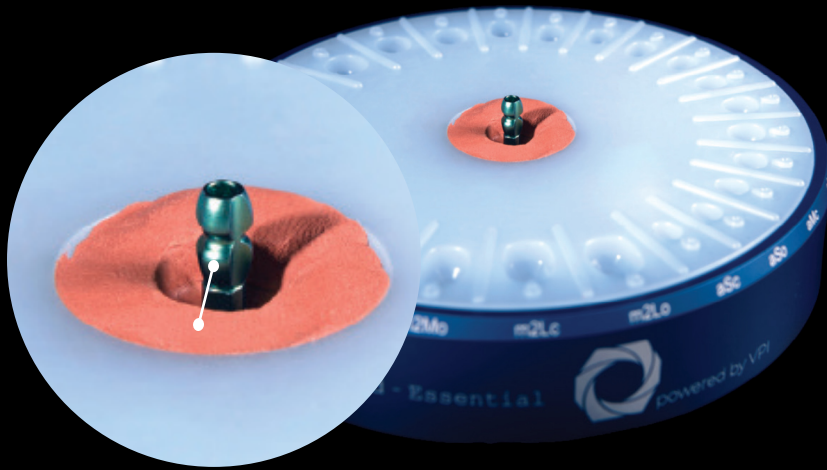




Duplication Process

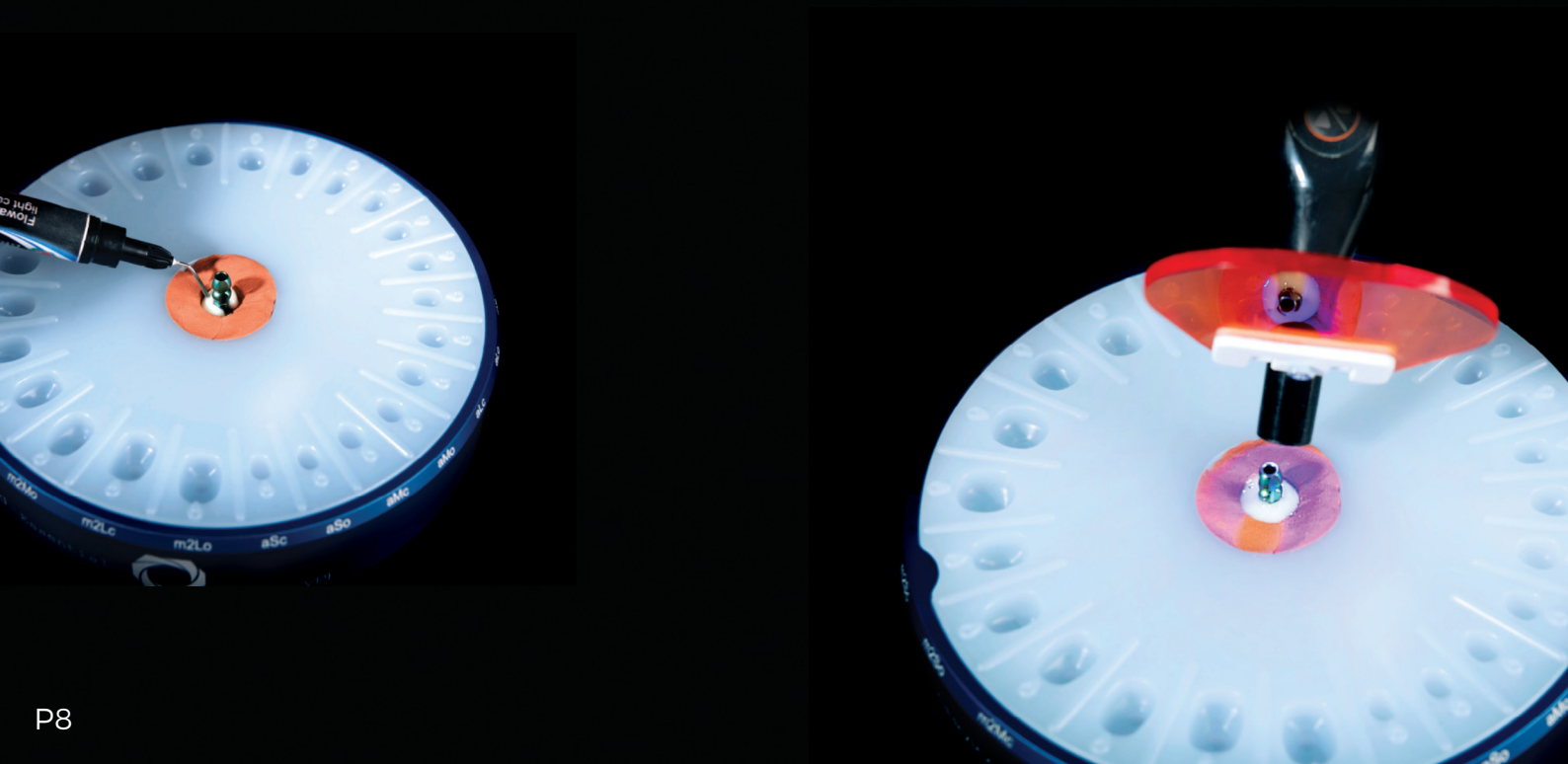
Step 5

Install into the “customized” well the stock impression post, making sure to align the mid-buccal portion of the impression post with the mark present on the silicone material, that was previously noted.



Step 6

Fill the available open space with composite resin and proceed with the light curing process.

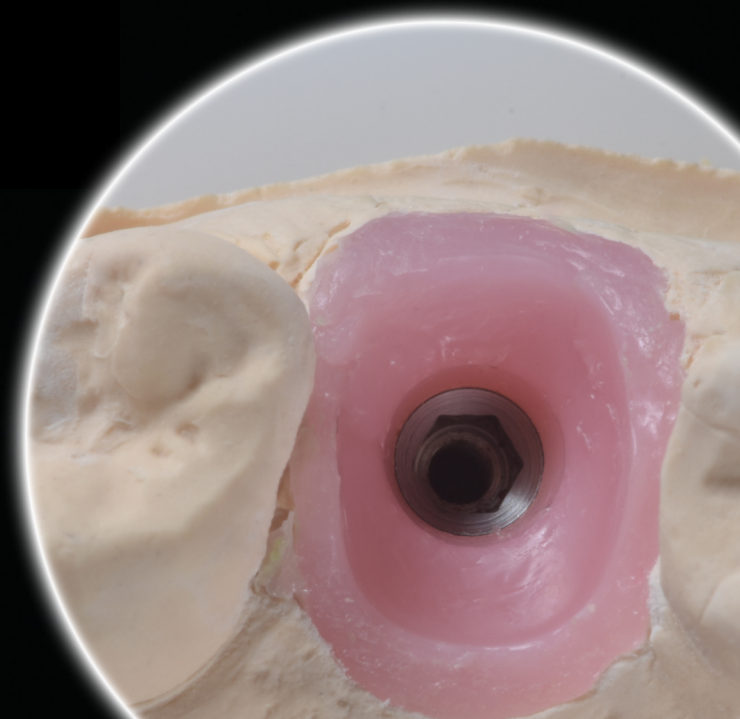
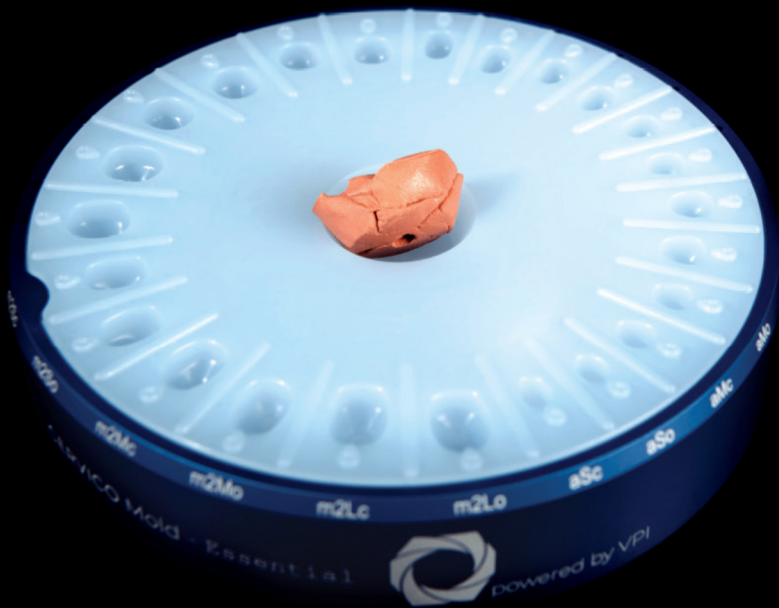




Duplication Process

Step 7

Remove the silicone impression material from the mold and clean the duplication well with a cotton tip soaked in alcohol solution.





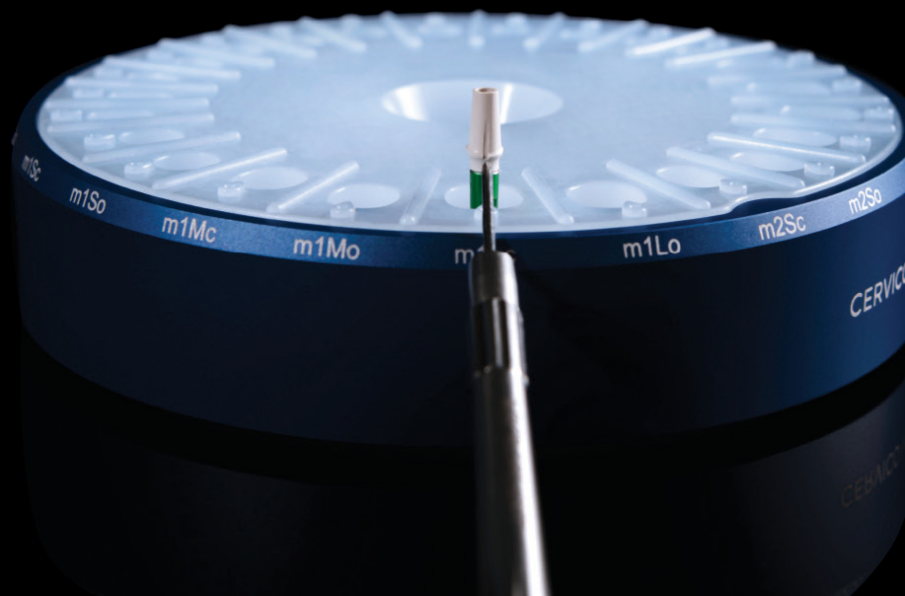
Special Note

Management of cases with arbitrary (not facing the buccal) orientation of the prosthetic connection of the implant

For cases where the implant has already been placed into the jaw and the orientation of the prosthetic connection is not ideal (not facing towards the buccal), then please follow the process below in order to fabricate the ideal Cervico healing abutment and impression post.

Install the temporary abutment to the implant and mark the buccal surface with a marker pen, or score a line with a drill. Please do the same for the impression post.

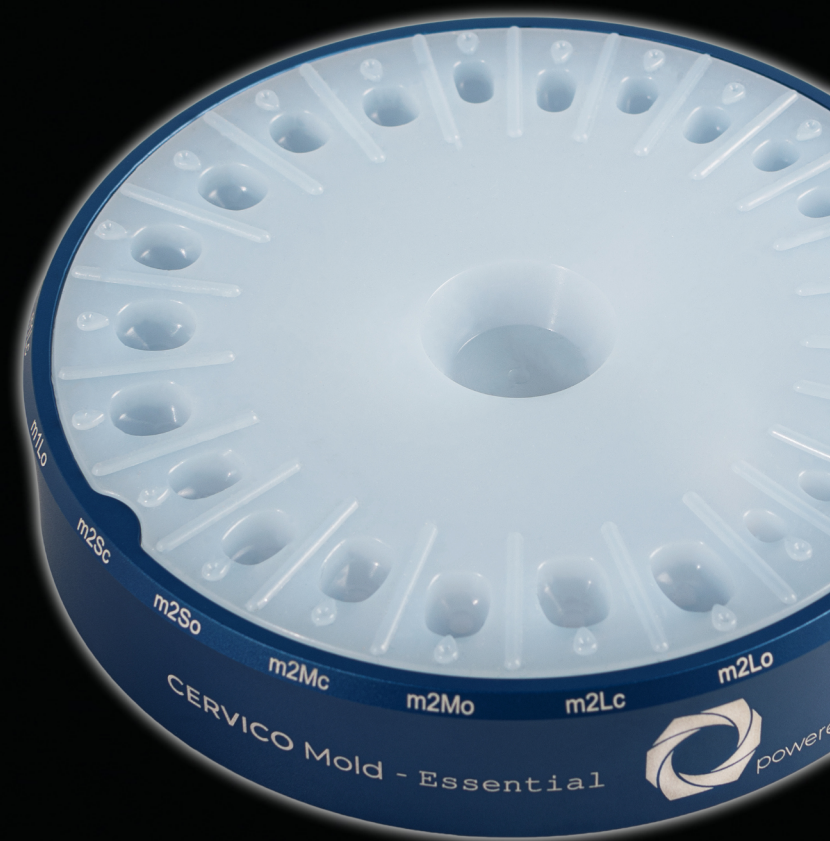
At the stage of Cervico healing abutment, or impression post fabrication please follow the same steps as per process described in pages 3-9, making sure that the marker on the temporary abutment or impression post is aligned with the “tear” extrusion present on the frontal side of the desired well of the silicone.





Sterilization Process

1. Clean the well of the silicone insert after use with a cotton tip soaked in alcohol.
2. Remove the silicone insert from the base of the mold.
3. Insert the base of the mold and the silicone insert in a sterilization pouch.
4. Proceed with sterilization process in a suitable autoclave as per normal protocol of sterilizing re-usable dental instruments.





Mastering the emergence profile

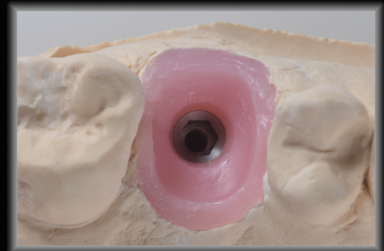
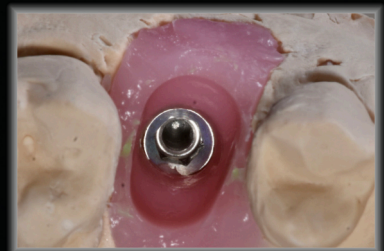
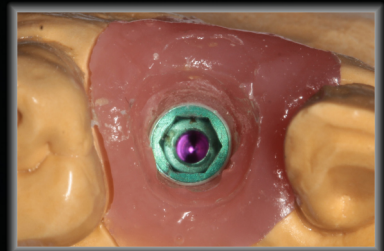
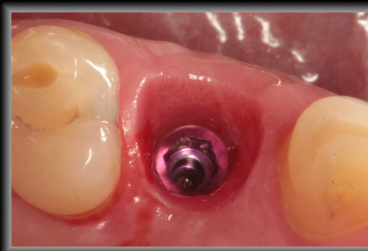
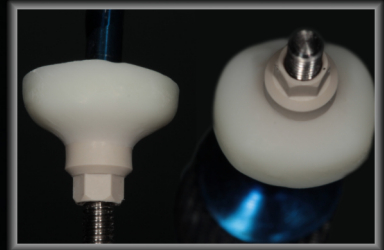
Anteriors



Premolars



Molars



For Professionals Only



VP INNOVATO HOLDINGS



Discover more.



www.innovatoholdings.com | info@innovatoholdings.com