



Main Street

"The Voice of Alton"

Volume XVI Number 10

Alton, New Hampshire - October, 2000

Complimentary



DOCTOR MAKING A HOUSE CALL?

No, the above picture of Dr. Denise Merritt "dropping in" from an altitude of 10,500 feet, is not an experiment in how to deliver medical services more efficiently in Alton. Rather, it's the "finale" in Dr. Merritt's "Plummet for Paws" fund-raising efforts for the Lakes Region Humane Society. Over \$700 was contributed toward continuing care of abandoned and abused animals in the area as a result of the plummet.

If you missed out on the original subscription for the jump, Dr. Merritt is still accepting contributions to the Humane Society. They may be dropped off at her office on Main Street, or mailed to P.O. Box 900, Alton 03809.

HALLOWEEN PARTY AT SCHOOL

The Parent-Teacher-Student Association (PTSA) will again put on the after "trick or treat" party at the Alton Central School on Tuesday, October 31, from 6 - 7:30 p.m. in the gym for children grade 5 and younger.

Come and enjoy the activities from bowling, necklace making, bean bag throwing to "whatever." All reports are that everyone had a marvelous time last year, and this year looks even better. There will be a costume contest in three age groups for the scariest, funniest, and most original.

Children will not be allowed to enter without an adult as a chaperone. Come with your children (you can dress up too) and enjoy a safe and fun Halloween Party.

Volunteers wanting to help should call the chair of this event, Rori Boyce, at 875-7371

PUBLIC FORUM ON SCHOOL LAND ACQUISITION IS OCT 9

By Wayne D. Fraser, Alton School Board

On Monday, October 9 — the eve of the vote — the Site Acquisition and Building Committee of the Alton School Board will hold a public forum regarding the acquisition of land for the eventual building of a new school. The meeting will be held at 6:30 p.m. at the school.

It was decided by the committee to wait until the night before the vote so that as much information as possible can be presented about the site. At the Deliberative Session of the special School District Meeting held on September 9 (see story on page 19) the committee informed the voters that additional testing was being done on the property and the results would be made public before the vote. These additional tests are now in progress and the results, along with those of the tests already conducted, will be discussed at the forum.

Many tests have been done, including soil tests, wetlands testing, and engineering studies. According to the experts present at the Deliberative Session, including an architect and a soil scientist, the School Board already has more information about the land available to the public than most districts have when a bond proposal is voted on. The land appears suitable for the proposed use — the construction of a new school.

For anyone who was unable to attend the Deliberative Session and/or is seeking more information about the site, informational packets are available at the Town Hall and the Gilman Library. The committee has also made available a videotape of the Deliberative Session, which can be checked out at the library. It is the intention of both the School Board and the committee that this information and the forum will provide an opportunity for everyone to have any questions they may have about the property answered. They can then make an informed decision at the polls.

Please remember to participate in this important decision for Alton's future. Vote on October 10, 7 a.m. - 7 p.m., at the Central Fire Station on Route 140. Absentee ballots can be obtained from the Town Clerk's Office.

A HALLOWEEN MYSTERY

By Joe Harris

As a regular listener of Maine Public Radio, I often learn interesting facts that are later borne out to me right here in Alton.

Recently I was listening to "Maine Things Considered," and the guest was a professor and historian from the University of Maine who studies graveyards. His story was about the religious and superstitious customs dating back to colonial times and was illustrated by a custom seen in graveyards of Munjoy Hill in Portland, Maine. Munjoy Hill faces east overlooking Casco Bay.

Continued on page 3

Main Street

Published Monthly Since 1985
by

Voice of Alton, Inc., A Not-For-Profit Corporation
P. O. Box 210, Alton Bay, NH 03810

Bob Calvert, President of the Corporation; Frank Metcalfe, Vice President; Alice Calvert, Treasurer; Gerry Metcalfe, Secretary; Joseph Harris, Judith Pellowe, Jean Stone and MaryBee Longabaugh, Directors.

Main Street Staff

Editors.....MaryBee and Bob Longabaugh
Art and Layout Editor.....Robert Boyce
Advertising Manager.....Jean Stone
Subscription Manager.....Judith Pellowe
Circulation Manager.....Robert Smith
Assistant Circulation Manager.....James Washburn
Assistants: Paulette Alden, Laurie Boyce, Alice and Bob Calvert, Jeanne and Ted Cole, Barbara and Dick Cunningham, Dot Folsom, Betty and Dick Frohock, Joseph Harris, Barbara Ingoldsby, Dora McNamara, Gerry and Frank Metcalfe, Amanda Pellowe, Emily Pellowe, Jean Roberts, Shirley Smith, Margaret Sudbey, Nancy Thomas, Connie and A.R. Van de Meulebroecke, Frances Washburn, Sandy and Charles Westen, Cliff Wooldridge, Cameron Wornick

ALL OF THE ABOVE PERSONS AND "BY-LINED"
CONTRIBUTORS ARE VOLUNTEERS. NO ONE IS PAID
FOR HIS OR HER SERVICE TO Main Street.

Printed on Recycled Paper
by Alton Printing Company
Average Circulation (1999) = 2,958

Advertising: 875-5397 Adv. Fax: 875-5399
Editorial: 875-5067 or E-mail: <mbejrjtl@worldpath.net>
Editorial Fax: By Prior Arrangement

Subscriptions are available to receive Main Street
by first-class mail for \$10.50 for 12 issues.

FLU SHOT CLINIC IN ALTON

The annual VNA-Hospice Flu Clinic will be held on October 25 from 1 - 2:30 p.m. in the Community Center on Pearson Road. The fee for senior citizens will be paid for by Medicare for those enrolled therein.

Mary Jane Dascoli

Notary Public
Justice of the Peace



Alton Fire/Rescue Dept.
Secretary/EMT
Box 472 Alton, NH 03809

Office: (603) 875-0222
Home: (603) 776-5971

*My Little
Sewing Room*

Unique Projects
...Let's Talk!
(603) 875-5329



Brenda MacKay
Main Street, Williams Bldg.
Monday - Friday
Over 29 years experience
*Appointments
Encouraged*
Custom Sewing - Alterations
Slip Covers - Curtains
Zipper Replacements
Ironing Service - Crafts and more

CALL FOR PROBLEM SOLVING INSTRUCTION



FROM THE SUPERINTENDENT'S DESK By Donald E. Parks Superintendent of Schools

AT A CROSSROADS

The Alton School District and the Town of Alton are at a crossroads in terms of the educational future of the children. The school building is 200 students beyond its capacity of 500 students, thus the need of four modulars/eight classrooms. The school district is trying to solve the space issue by purchasing three parcels of property totaling 67 acres as the first step in solving the space needs. If the voters approve the purchase, the second step would be to propose a new school building. Of the three parcels of land one parcel is 61 acres which would allow the community to build any kind of school it desires. For example, in order to build a high school, the New Hampshire Department of Education requires a minimum parcel of 15 acres and an additional acre for every one hundred students. Thus, acreage would not be an issue.

Another feature of these parcels is that one has a building on it which could be used as an SAU office thereby avoiding the current rental cost of \$5,400 per year. Additionally, the lot and house would be state aided at approximately 40 per cent if used as an SAU office. An average of two appraisals of this lot and house were at \$112,000. Using an approximation, about \$49,000 could be returned to the district to help offset the purchase price.

The Alton School Board has done extensive work to find a workable piece of property. They have looked at 42 sites. A package proposal of a site and new high school was defeated by the voters in 1998 because, among other reasons, the cost of the property was said to be too high at \$385,000. Now some are saying that the site development cost on the proposed property, estimated between \$600,000 and \$1,200,000, is too high and lacks specificity. I have to agree that specifics are vague since all of the final tests have not been completed and the type of school to be built is unknown; specific costs cannot be addressed at this time.

The type of school would have a direct site cost relationship. However, remember that the site costs on the original \$385,000 parcel were quoted at \$900,000. In comparing the two sites the total cost could even out because in the earlier case the purchase of land was considered high and in the proposed site, depending on what type of school is built, the site costs could be higher but the purchase price would be lower.

Finding the acreage needed close to the center of Alton is becoming harder each year and in the near future may not be an option. As the economic development in the Portsmouth/Pease area continues and as more people discover the quality of life in the Lakes Region, there will be an increasing demand for land upon which to build housing. The purchase of this acreage for school purposes would indicate a future-oriented planning process. As Alton's population grows, there will be a need for more space in the schools. This acquisition of land would allow for the necessary expansion in the future.

The choice to be proactive or reactive will be up to you — the voter — on October 10.

ALTON'S "TRICK OR TREAT"

Tuesday, October 31
4 - 7 p.m.

**DRIVERS: WATCH OUT FOR
THE "LITTLE ONES!"**



Main Street's Inside Front Page

WINNIPESAUKEE

By Marie Campbell, Alton Bay

A time ago
 God made a lake
 For mankind's use
 Their needs to take
 Gliding paddles o'er it went
 Gently, quiet, each task intent
 Brave men along these shores did dwell
 Of this great water they could tell
 The calms, the storms, the rain, the snow
 And they would want us all to know
 There was a time when men would see
 The sparkling stars dance on its deep
 The vapor days when billows rise
 The sunset cover in western skies
 They'd say, take time
 Don't rush on by
 With noise of engine
 And speed so high
 Hear the paddle
 Slow, idle some
 Say thanks to God
 For this special one
 There are some days
 Before the world awakes
 When I can see
 Sparkling stars the water makes
 Or still as glass its patterned top
 For these passing sights we need to stop
 To see the beauty
 Now as in the past
 When life and speed
 Was not so fast.

Continued from page 1

The tradition of the early colonists was to bury people facing in an east to west direction. The deceased were buried with their feet pointing to the east and the head pointing to the west waiting for the sunrise which symbolized the resurrection of the soul. Many families lost multiple members in tragic deaths due to epidemics. The early gravestones and markers had symbols, such as skulls, crossbones, and sad cherubs illustrating the suffering on earth. The burial direction was done in anticipation of resurrection of the soul and a happier life in the hereafter.

In the light of the approach of Halloween and its association with graveyards, I got curious. I visited a number of cemeteries from Rochester to New Durham to Alton in order to test this theory. To my surprise, gravestones dating from colonial times overwhelmingly have headstones oriented east to west.

Next time you're haunting a graveyard for Halloween, take note of the headstones. Beware of old superstitions! Did the colonists know something we don't? What do we do today that will be considered superstitious 200 years from now?

A WORKSHOP TO DESIGN

ALTON VILLAGE

By Andy Locke, Alton Planning Director

Although the Planning Board has been very busy with land development applications, you should not think that we're only looking at the present. On October 13 and 14 the Planning Board and Selectmen will be sponsoring a "design charrette" focusing on improving the appearance of Alton Village. With the improvements to Alton Bay nearly finished, its time to start thinking about doing similar things for the village.

So what is a "charrette," you ask? Well, its just a fancy word for putting together a group of design professionals, business people, and interested citizens to brainstorm and come up with a proposal for primarily physical improvements to an area. The group will look at what currently exists, what the village's strengths and weaknesses are, and what will make the village successful — aesthetically, economically, and socially. The end product will be a conceptual design for the village, including recommendations for sidewalks, lighting, benches, street trees, traffic circulation, utilities, and parking.

As of press time, the location and exact times for the charrette have yet to be determined. However, if you would like more information about the charrette or are interested in attending, please contact me at 875-5095.

UNITED ASSOCIATIONS DISBAND

By Bob Calvert

Under the terms of Sections 1, 2, and 3 of Article VIII of the by-laws of the United Associations of Alton (UAA), its Board of Directors on August 26 voted unanimously to disband the federation which has been in existence for 33 years. Founded here in 1967, several independent associations around Lake Winnepesaukee's Alton area voted to join together as a sort of federated group initially to protect their interests and to have fair taxation. Before long this defensive air gave way to participation in many fine projects, all helping Alton become a better community and in the process solving many of its land use problems. The disbanding action was taken, according to UAA officers, because of a lack of a truly current day sense of mission, such as the group had in the beginning and for many years thereafter.

The United Associations can point with pride to many fine achievements for the town over those 33 years. They helped bring zoning to Alton in 1969, and participation in the lay lake-monitoring program was begun and exists to this day. It will continue as an independent activity with the State. Tax collections were changed from once per year to twice to ease the burden on the taxpayers. Both the Budget Committee and the Planning Board became elective bodies instead of appointed bodies. The group over the years held a series of summer mock town meetings which, while they carried no legislative weight, were instructional and helped summer residents have a better picture of town operations and needs.

Individual associations, of which there are about 14, will not be adversely affected by this action and will each continue independently. The only change will be in the federated aspect of their work. Any remaining fiscal resources will be divided equally between the VNA-Hospice and a continuation of the lay lake-monitoring program. Records and similar materials will be offered to the Alton Historical Society.



PERSONAL INJURY MEDICAL MALPRACTICE GENERAL LITIGATION
BUSINESS LITIGATION ACCIDENTS

EXPERIENCED TRIAL LAWYERS
LAW OFFICES OF PAUL M. MONZIONE
(FORMER PARTNER OF MELVIN M. BELL)

NO FEE for initial phone or office consultation
or unless a recovery is obtained

* Day, Evening, Weekend Appointments Available *

PORTSMOUTH OFFICE ALTON HOME OFFICE
603-334-9800 603-859-6555
Offices in NH, MA, CA with Affiliate Offices throughout US



BUCHANAN ASSOCIATES, INC.
www.maxfieldrealestate.com
email: maxb@worldpath.net

FAX#875-6378

1-800-871-5687

875-3128

MAIN ST., ALTON, NH

- Residential REAL ESTATE
- Commercial SINCE 1954
- Waterfront

October Specials

(Thursday thru Sunday)

- 1 1/4 lb. Lobster Dinner Per Person
- Single \$10.95 Twins \$15.95
- Lobster Rolls \$7.95
- Haddock Sandwiches \$5.95

Dockside Restaurant

Alton Bay ~ 875-2110

We are booking Christmas Parties now



Colonial Siding

Home Remodeling

Alton Bay 875-2132
1-800-562-4441

Vinyl Siding, Window/Door Replacement, Additions
Kitchens & Baths, Gutters & Shutters, Porch Enclosures
Insured. Free Estimates

- ♥ Dry Flower Arrangements ♥ Baskets ♥ Folk Art ♥ Pottery ♥ Candles ♥

Dolls Bears Looms



The Craft Cottage
Route 11, Main Street
P.O. Box 236 Alton Bay, NH 03810
(603) 875-8787

Quality hand crafted gifts.

WINTER HOURS:
Thursday - Monday
10 AM - 5 PM

Woodworking Ceramics

- ♥ Appliqued sweatshirts & Children's Wear ♥ Quilts ♥ Tole Painting ♥



FROM THE DRAFTING BOARD
By Andy Locke
Planning Director

DEVELOPMENT ABUILDING

As you have been seeing with your own eyes, development activity is way up in Alton. Since January the Planning Board has reviewed and approved 11 subdivisions totaling 28 lots and 4 site plan applications for commercial businesses. In addition to the approved subdivisions, the Planning Board and Conservation Commission have spent much of the spring and summer analyzing "The Timbers on Lake Winnepesaukee," a 24-lot subdivision on Rum Point in West Alton. Because of the rugged terrain on Rum Point, the board and commission have been taking great care to ensure that the use will be safe and environmentally sound.

The Board is also in the process of reviewing a 25-lot subdivision off Route 28, a 23-lot subdivision off Stockbridge Corner Road, a 9-lot subdivision off Locke's Corner Road, and a 5-lot subdivision off Route 11 in West Alton.

Much of our local development activity can be attributed to the strong economy of the Boston/New Hampshire area. From 1997 to 1999 the town issued 164 permits for new residences; through September 15 of this year 50 new house permits have been issued. With all of the new construction, vacant lots become scarce, the price of land rises, and subdivision applications follow — the simple laws of supply and demand at work.

Progress on updating the Master Plan suffered a temporary setback when I filled in as Interim Town Administrator. However, I'm back to my normal duties and look forward to pressing ahead. You will be reading about progress in upcoming issues of Main Street. The Planning Board will also be looking at amendments to the Alton Zoning Ordinance, changes to the Subdivision Regulations, and updating the Capital Improvements Program.

On a final note for now the Planning Board is still looking for more members. If you are interested in playing a role in shaping Alton's future, please contact us at the Land Use and Property Records Department (875-5095). As always, if you have any questions or curiosities about what's happening on the development front, feel free to call us or stop in at Town Hall. We are on the second floor.

MOVIE MANIA
ALTON

DVD DREAMCAST
N64
PLAYSTATION

COMING SOON PLAYSTATION 2

OPEN 7 DAYS

MOVIE MANIA ~ ALTON
875-0027 CALL FOR RESERVATION



AFRICAN CHILDREN'S CHOIR

By Bob Hett, Pastor, The Bay Church

The African Children's Choir, pictured above, will be in concert at the Moore Chapel of the Alton Bay Christian Conference Center on Friday, October 6, at 7:30 p.m. A "hit" at the Conference Center in the summer of 1997, there have been several attempts to get them back in the area. One attempt failed when the children had their visas recalled.

When word was received that the choir was going to be in the area this fall and the date was still open, we urged the group to come even though it was not happening under the summer ministry schedule. I am hopeful that folks in the community and the surrounding area will support the choir with their attendance and a generous free-will love offering.

ACSP DOESN'T LET UP

By Elizabeth Sweeney

The Alton Community Services Program (ACSP) completed the month of August having served 26 adults and 26 children with an average of three visits per family during the month.

We are currently seeking volunteers willing to drive to Bedford from time to time to pick up fresh foods on Friday afternoon and deliver them to the food pantry. Interested parties should call 875-2273. Additionally, the ACSP is always in need of volunteers to work in the food pantry assisting clients with food distribution during its normal Saturday hours.

We are also still looking for more volunteers to help get Alton citizens to much needed medical appointments. You would be on a list of individuals who are called when transportation assistance is needed. This service is provided in cooperation with Caregivers of Wolfeboro and Vicinity.

ACSP's Food Pantry can always put donations to good use. Food can be dropped off either at the pantry on Saturday afternoons from 2 - 4 p.m. or left with Pat Rockwood at the Welfare Office in Town Hall Monday - Friday.

We would like to give a special thank you to our faithful volunteers who have been manning the food pantry each Saturday. You are very much appreciated!

GRIEF RECOVERY GROUP

Wanda Harris, Bereavement Coordinator for the VNA-Hospice of Southern Carroll County and Vicinity is offering a grief recovery group. This group is open to all who have experienced the death of a loved one.

The series will be eight weekly sessions. There is no charge but pre-registration is required. For more information and to register, call 569-2729.

2000 years later, Christianity's biggest competition is still the Lions.



Before you sit down for an afternoon with the Lions, Bears, Dolphins, Rams, Cowboys or Vikings, come spend an hour with some very nice Christians in the love, worship and fellowship of Jesus Christ.

The Christian Churches of Alton
The Bay Church ~ The Community Church ~ St. Joan of Arc
(see Information Center for worship times)



**ARTHUR W. HOOVER
ATTORNEY AT LAW**

Admitted in NH and Maine

*Quality legal service in the areas of real estate,
estate planning, corporate and business law,
and family law.*

ALTON PROFESSIONAL CENTRE
MAIN STREET
P.O. BOX 817
ALTON, NH 03809-0817

Tel: 603-875-2800
Fax: 603-875-3394



**Dockside Country
Properties**

Each Office Independently Owned and Operated

Karen A. Poisson

REALTOR® NH & ME

7 Depot Road

New Durham, NH 03855

Toll Free: (800) 371-8007

Office: (603) 859-5500

www.nhlakehomes.com



Serviceing the Lakes Region



**BREAKFAST SERVED ALL DAY
LUNCHEON SPECIALS**



OLDE BAY DINER

RTE 11, ALTON BAY

875-3700

Monday ~ Friday
6:00 am to 1:30 pm

Saturday & Sunday
7:00 am to 1:30 pm

PREMIUM VINYL SIDING CO.

CENTRAL N.H. SEAMLESS GUTTERS

Complete Vinyl Siding and Trim Coverage
Replacement Windows and Doors
(Seamless Aluminum Rain Gutters)
Any Length ~ Many Colors
Gutter Cleaning Also Available

PHONE/FAX (603) 776-3545



CHRISTIAN WOMEN'S LUNCHEON

The Lakes Region Christian Women's Club will be sponsoring "A Harvest Time Auction Luncheon" on Wednesday, October 11, from 11:30 a.m. - 1:30 p.m. at the Conference Center on Route 11 in Alton Bay.

"Going, Going, Gone ..." is the Special Feature with Park Nolan, Auctioneer, from Meredith. The auction will feature special handmade items. "Pickin' Bushels of Songs" is the Special Music with Laura Southworth of New Durham. "To the Highest Bidder" will be presented by Special Speaker Tina Vermette from Framingham, Massachusetts. Tina will reveal the secret of being the highest bidder.

Reservations for the lunch and the available complimentary nursery may be made by calling: in Alton — Janet at 875-2032 between 2 - 6 p.m., or Kim at 875-8173; in Gilford — Harriet at 524-7194, or Faith at 293-8073.

The Lakes Region Christian Women's Club is an interdenominational group with no formal membership.

MOMS IN TOUCH

By Phyllis Brooks

Moms in Touch meet each Monday and count it a privilege to be praying for our children. We hope other moms who share the same concerns, regardless of their church background, will feel free to join us. We offer childcare, but it would be helpful if we knew that in advance so we can make the necessary arrangements. In October we will continue to meet at my home (236F Stockbridge Corner Road). Don't forget, we are a non-denominational group with no political agenda. Call me at 875-2866 for directions if you want to meet with us for a fantastic time of prayer.

On a personal note: I watched the video from the September 9 meeting, and I want to thank the School Board and members of the committee who have put so much time (**free of charge**) into gathering information for the new site. I hope it will encourage you to know that this is an issue we pray about faithfully at our meetings because it has such an impact on our children. God bless you all and your efforts.



ALTON BAY LAKEVIEW MARKET

DELI, BAKERY, AND GROCERY • CATERING

(603) 875-8888

SUN-SAT 7am-9pm

LET US **CATER** YOUR NEXT AFFAIR FROM OUR **DELI** WHERE THE SANDWICHES ARE MADE TO ORDER. **DAILY LUNCH SPECIALS~DELI PLATTERS & SALADS** WE HAVE A FULL LINE OF FRESH BAKERY ITEMS BAKED ON THE PREMISES DAILY. **CAKES~PASTRIES~BREADS~PIES~SO MUCH MORE** SPECIALTY CAKES AVAILABLE WITH 24-HOUR NOTICE. **COME PLAY MEGABUCKS/POWERBALL ON OUR NEW LOTTERY MACHINE**

OPENING

**THE
AMMO DUMP, INC.**



Ernie Frongillo
Owner

**Ammo
Reloading Supplies
Guns**
Buy • Sell • Trade

118 Spring Street
Farmington, NH 03835

(603) 755-9800



*LIMITED HOURS - PLEASE CALL

Merrymeeting River Resort



Gather 'round the campfire as you watch the sun fade the sky from deep hues of blue to orange to deep red, as the calm of night settle the day.

A family mobile home resort featuring seasonal and year round homes

Your Hosts:
The White Family - Don, Sandy, Eric & Jean Horn
One mile from Alton circle on Rte 11 East 859.4811

Drop by and See what's for sale.

PAVILION TO CHANGE HANDS

By Cecil C. Ables

It is official: the Bay View Pavilion goes up for a premier auction this month. This leaves many wondering "why?" Why in such a short period of time is this unique and historic restaurant, music, and function hall back on the market? The short answer: while the dream of restoring this old music and dance hall has been accomplished, the management of a successful restaurant and banquet/function hall will be left to others who have a strong interest in this type of enterprise.

The "Pavilion," as you have read in these very pages (July 1999 issue, page 17), has had a full life since being built in 1921 and rebuilt after a fire in 1928. From the beginning the Pavilion has served as a function hall par excellence. No doubt you have heard (or in some increasingly rare instances, have personally experienced) many famous "big bands" that performed there including: Jimmy and Tommy Dorsey, the Vaughn Monroe Orchestra, and yes, even the famous Louis Armstrong, "Satchmo!"

While Daryl and Carl Hoitt have owned the Pavilion for less than two years, they have added significantly to its history. Thanks to their vision and dreams, a historic restoration took place, the likes of which compares to the original building construction. The current modest exterior belies the impressive classic resort-style wooden interior replete with a state-of-the-art stage, public address system, and a huge professionally designed kitchen.

Even in such a beautiful structure, operation and management of a facility of this size and capability is a challenge. The quiet, unique, and near "pastoral-lakeside" setting of the Pavilion in Alton Bay is both a draw and a curse. For a facility of this size, proximity to a large year-round population would likely indicate high potential for commercial success. In this quaint Lakes Region locale, keeping the restaurant and entertainment complex at the required occupancy is a tremendous challenge for even an especially astute manager.

In fact, as an employee it was my job to market and promote the facility. While I brought in numerous functions and wildly successful Blues and Bluegrass festivals, in the end these are not year-long sustaining events but, rather, major events which publicized the Pavilion throughout New England.

Incidentally, you will have one more opportunity to witness one of these wonderful events on Saturday, October 28, at the Second Halloween Bluegrass Festival, which is to take place regardless of the pending change in ownership.

This premier property is the perfect facility for functions and banquets, as well as an indoor entertainment facility. Perhaps the town could put in a bid for this irreplaceable piece of Alton and New Hampshire history? What a location and facility for the Town's Parks and Recreation Department, especially now with the added (function facility) revenue potential. Just a thought.

Why don't you all come see us at the October 28 Bluegrass Festival? Perhaps you may even meet some new owners!

HOME
AUTO
BUSINESS
LIFE



"GOOD OLD FASHIONED SERVICE"
Call for special contractors package

435-7262
Leavitt Road, Pittsfield

AN
ALL
LINE
AGENCY

Barbara's Little Beauty Shop



Family Hair Care
Senior Citizen Discounts
OPEN TUES. - FRI.

N. Barnstead Rd.
Ctr. Barnstead, NH

776-3920
Barbara Elliott

Alton Funeral Home
School Street
Alton, NH 03809
(603) 875-3311

NEW DURHAM ALTON FARMINGTON

**JOE GOODROW'S
RUBBISH REMOVAL**

875-4488
235 STOCKBRIDGE CORNER ROAD
ALTON, NH 03809



*Feature Fliers, Newsletters, Advertising Specialities,
Wedding Invitations and much more!*

Call us for a quote:

(603) 875-2197
(800) 439-2197 (NH only)
(603) 875-3290 Fax

*Letterheads, Invoices,
Envelopes, Business Cards,
Carbonless Forms, Labels,
Tickets, Promotional Pads,*

Alton Printing Co.
Church Street
Alton, NH

Fresh, Pure N.H. Honey

SPRING FEVER FARM

HC 72 Box 116, Lane Drive
Alton, New Hampshire 03809-9604

BEN CHADWICK *Keeper of the Hives*
BEV CHADWICK *Keeper of the Books*

Lane Drive is off from Coffin Brook Rd. Alton
603-875-3544

HEARING AIDS

Robert I. Williams
BC-HIS

**HIGHEST QUALITY
BEST PRICES
FAST SERVICE**

1-800-538-4064

**EXPERT SERVICE
ALL MAKES**

Offering

Starkey's PFS - 6000

Computer testing & fitting
system. Improving accuracy
and comfort in Hearing
Correction. Digitally
Programmable Sequel®
Available

**HALL'S
PHARMACY**
10-1 Mondays
Wolfeboro 569-2374

WILLIAMS BLDG
By Appointment
Rt. 11 Alton
875-6059

CARNEY DRUG
10-1 Wednesdays
Rochester
332-2132

FREE HOME VISITS - FREE HEARING TESTS

Alton Coach Inc.
Luxury Transportation Services
- Featuring -
Lincoln Town Cars
Airports • Weddings • Proms • Anniversaries
Nights Out • Business Trips

P.O. Box 537
New Durham Road
Alton, NH 03809

Tel.: 603-875-3672
800-352-2536
Fax: 603-875-3675

Ned Osborn - Member New England Livery Association

Jacquelines
First Class Cleaning Service
Commercial ~ Residential
Free Estimates
Alton, N.H. 603-859-1058

CUNNIFF

Residential House Painting
Cedar Spray & Wood Restoration
House Washing Logs Lindals Clapboards Shingles

*Low pressure washing with cleaning solution.
Cedar Spray can make your natural wood
home look new again.*

(603) 859-3836

25 South Shore Rd., New Durham, NH 03855

22% VOTE IN PRIMARY ELECTION

The State Primary election held on September 12 saw 791 Alton voters, or 22.4 percent of those registered, cast their ballots. Of these 615 were Republican and 176 Democrat.

The outcome is that the General Election on November 7 will find a Republican ticket with Robert K. Boyce for State Senator and Gordon E. Bartlett, Laurie J. Boyce, "Stan" Czech, and David H. Russell for State Representatives. The Democrats running in opposition are Dennis P. Vachon for Senator and Markos Condodemetraky, Stanley Devorin-Post, Robert Kaplan, and Vincent P. Miller for State Representatives.

ACTIVE PARENTING SERIES

Beginning Monday, October 16, the Active Parenting Series will be offered at the Alton Central School. It runs six weeks and was developed to help you raise your children.

Issues to be discussed but not limited to are: discipline methods that work, three keys to your child's self esteem, how to avoid anger, communications skills to win cooperation, teaching your child responsibility, and how to teach your child to respect you.

Molly Connelly, M.Ed., will lead the group which will meet on Monday nights, 6:30 - 8:30 p.m. There is no charge; it is open to ALL parents; and free childcare is provided. Pre-registration is required so call 875-7500 to sign up.

60TH WEDDING ANNIVERSARY OPEN HOUSE

By Linda Matson

You are invited to the 60th anniversary celebration of my parents, Gus and Eleanor Hoaglund. It will be held on Saturday, October 14, 1 - 5 p.m., at Foxy Johnnie Restaurant in New Durham. No gifts, please, but do bring a photo for their album.

My parents were married on October 12, 1940 and they have two children, four grandchildren, and five great-grandchildren. They retired to Alton 14 years ago. My father has been active in the Lions Club, community projects, canning, baking, but most of all building something for someone! My mother has been active in the Lioness Club, exercise classes, community projects, and helped the referees at games where their grandchildren played.

Many of you know Gus and Eleanor Hoaglund. Please stop by to share their celebration of 60 years together.

ALTON CENTRAL SCHOOL

CLASS AND STUDENT COUNCIL OFFICERS

The following students have been selected as class officers for the school year 2000 - 2001.

Freshman Class: President, Dan Quinn; Vice President, Isaac Tharpe; Secretary, Ryan Donolly; Treasurer, Elspeth Dana.

Sophomore Class: President, Terese Hopper; Vice President, Stephanie Hillsgrove and Hilary Ballentine; Secretary, Sarah Hopper; Treasurer, Zach Shea.

Junior Class: President, Dana Lang; Vice President, Caleb Gagne; Secretary, Morgan Fuller; Treasurer, Jon Owen.

Senior Class: President, Renee LaFreniere; Vice President, Emily Sydow; Secretary, Sara Dore; Treasurer, Katie Morrill.

The Student Council for the year will have as officers the following students: President, Meghan St. Cyr; Co-Vice Presidents, Renee LaFreniere and Caleb Gagne; Secretary, Kayla Ballentine; Treasurer, Jeremy Howe.

HISTORICAL SOCIETY ANNUAL MEETING

By Jean Roberts

The Alton Historical Society will hold its Annual Meeting Tuesday evening, October 17, at 6 p.m. in the Pearson Road Community Center. We start with our annual Pot-Luck Supper which will be delicious as usual. (How can it not be with all our great cooks!) Ann Morse is in charge, and we bring our plates, tableware, and something for the buffet table. Call Ann at 364-7742 if you want suggestions.

Our Annual Meeting will begin about 7 p.m. This is when we wrap up all our 2000 business with reports of our year's activities and plan for 2001 with the election of officers and discussion of our program for next year. Please bring your ideas and opinions, along with your food and tableware.

Come Join Us!

ALTON GARDEN CLUB

By Betty Locke

On Tuesday, October 24, the Alton Garden Club will meet to hear a presentation on "The Benefits of Aromatherapy" by Natasha Itchkavich. The meeting will be at the Congregational Meeting House on Church Street at 1:30 p.m.

Hostesses are Ellamarie Carr, Chairman; Priscilla Bourgault, Phyllis Buchanan, Virginia Dore, Grace Genova, Winona Houle, Myra Meier, Gabrielle Stevens, and Dorothy Woughter.

ANNUAL THANKSGIVING BASKETS

By Paulette Wentworth

Coordination by the Town Hall Staff of the annual Thanksgiving food baskets for families in need has begun. Donations will be gratefully accepted in the form of cash, check, or money order (made payable to "Operation Blessings") and may be left with me at Town Hall or mailed to Town Hall, P. O. Box 659, Alton 03809.

Canned goods donations may be dropped off at the Town Hall between 8 a.m. and 4:30 p.m. on or before November 17. The Police Association will again be contributing toward the turkeys, and we appreciate their involvement.

If you are interested in helping distribute baskets or can suggest the home of a shut-in or needy family, please contact me at 875-0204 between 8 a.m. and 4:30 p.m.



A REMINDER TO ADVERTISERS

The DEADLINE for placing new ads in Main Street is the 15th of the month, or the first business day thereafter. PAYMENT for new ads, or for continuing an existing ad, is due at the same time.

The cost for ads is \$12.50 a column/inch. If you wish to take out a contract for 6 or 12 months, you have to pay in advance, receiving a 10 percent discount. Monthly billing is being discontinued.

It is up to YOU to get copy and payment in by the 15th. Send them to the Advertising Manager either by placing them in the "dropbox" in the Bank of New Hampshire in Alton or mail to P. O. Box 210, Alton Bay, NH 03810.

If you wish to take out a contract and stop worrying about monthly payments arriving on time, contact our Advertising Manager at 875-5397.

OPEN

7 DAYS

Rentals
Fax / Copies Service

Main Street - PO Box 600
Alton, NH 03809-0600
(603) 875-2233
FAX: (603) 875-2288

HUPPE'S WATER SYSTEMS

Box 1054, Alton, NH 03809
Pumps, Filters, Tanks & Wells
Call our Water Specialist at:
603-875-6969 or 603-387-0029

Like your Furnace: Your water system should be serviced yearly to avoid costly repair. Mention this ad and receive a system service, water test, or camp close up for \$25.00

Fully Insured Free Estimates

TAYLOR LANDSCAPING INC.

Lawn and Property Maintenance
Tree Pruning and Removal
Brick Walkways and Patios
Stone and Block Walls

P.O. Box 25 (603) 364-6888
Alton Bay, NH 03810



ALTON HOME & LUMBER CENTER

Rte 11, Alton, Open 7 days
(603) 875-3900

NEW FALL & WINTER HOURS

Beginning October 1st
Mon-Sat 7:30 am - 5:00 pm
Sunday 8:30 am - 4:00 pm

"We're the Problem Solvers"



THE HARVEST MONTH

October is the harvest month. It is time to bring in the "stores" before winter sets in. To the outdoor person it is time to put some meat on the table.

Starting October 1, you can try your skills as a hunter on the cottontail rabbit, snowshoe hare, gray squirrel, fox, pheasant, quail, and ruffed grouse. The small but tasty woodcock are huntable starting October 6. Alton's many trails, old farmsteads, overgrown fields, swamps and hardwoods provide many places to hunt. Acorns seem in good supply this year. Look for trees the animals are feeding near. As always, be sure to check the regulations before heading out and always respect the landowner's rights.

Youths 15 years old and younger can try their hunting skills during a special Youth Hunting Weekend, October 21 - 22. A licensed adult must accompany the youth but may not carry a firearm or assist in the taking of the deer. Either sex deer may be taken and all Fish and Game Laws must be followed. This is a great way to get the kids out to carry on the hunting tradition.

The muzzleloading deer-hunting season opens October 28. There are some unique changes this year. The number of "doe days" has been reduced in several wildlife management units. In Unit J2, Alton's unit, any deer may be taken October 28 - 30. From October 31 - November 7 only antlered deer may be taken. In the past there were ten either-sex days. This change will hopefully balance deer density numbers throughout the state. Hunting with a muzzleloader is a challenge. Keep your powder dry and good luck!

Be aware October 15 is the end of the fishing season in "trout ponds" and "fly fishing only" ponds. One may still fish for warm water species in most places. Check the rules.

What a sportsmen's paradise we live in. Where else could you harvest fin, feather, and fur, all in the same month? See you out there.

ADULT CO-ED SOFTBALL LEAGUE

By Kellie M. Troendle, Recreation Director

The Alton Parks and Recreation Department sponsored the Adult Co-Ed Softball League with eight teams this summer. The league had a great season despite the wet weather and was able to play all of the games by extending the schedule. The 1st place trophy was awarded to the Cornelissen team who won the final game over the Jones team.

Thank you to all of the teams for a great season and congratulations to the Finethy team for winning the Most Improved Team award. Thank you also to Jack Bernard for umpiring all of the games and coordinating the softball cookout. Your time and effort was greatly appreciated.

ALTON-NEW DURHAM LIONS CLUB

By Susan Hoover

The Lions Club would like to thank everyone for making the Canoe Raffle a great success. Apparently many people were ready to get out and navigate the beautiful lakes and rivers of New England. Unfortunately, there can be only one winner, and the lucky person is Ed Klopher of Alton Bay. Congratulations, Ed, and happy paddling in your new, bright red canoe!

A significant donation from the proceeds of the raffle was given to the Alton Fire Department to help defray the cost of the Thermal Imaging Camera. The Lions Club is proud to contribute to the safety of the community.



NAPA AUTO PARTS - FARMINGTON

WE CARRY A FULL LINE
OF AUTO PARTS & ACCESSORIES
INCLUDING...



- Parts for Imports
- Parts for Trucks
- Paint & Supplies
- Brand Names You Rely On



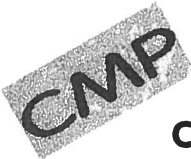
ASK ABOUT NAPA'S NATIONAL WARRANTY PROGRAM

NAPA AUTO PARTS

Route 11 - Farmington
755-2264 • 800-734-2269
Mon-Fri 6 am to 5:30 pm
Sat 6 am to 5 pm • Sun 9 am to 1 pm

Bookkeeping & Business Services

Blue Hills View
RR#1 Box 212D
Farmington, NH 03835



Catherine M. Place

Phone/Fax (603) 755-2550
E-Mail place@worldpath.net



ALTON VILLAGE 5 & 10

ACE HARDWARE
(603) 875-5510



COPIES & FAX SERVICE
Available Here - FAX: (603) 875-5525

**EVERYTHING YOU NEED
FOR FALL AND
HALLOWEEN DECORATING**

Lots of Scarecrows, Witches,
pumpkins, mums, silk flowers and drieds!

**HALLOWEEN CARDS, CANDY
& LOTS OF MAKE-UP
& COSTUME FIXINS!!**



Main Street Information Center

October

1	2	3	4	5	6	7
8	9	10	11	12	13	14
15	16	17	18	19	20	21
22	23	24	25	26	27	28
29	30	31				

OCTOBER EVENTS

- Mon. 2 BOYS SOCCER @ Calvary Christian, 4 p.m.
BOOK DISCUSSION GROUP, Gilman Library,
6:30 p.m. see Checkout
- Tue. 3 FRIENDS OF THE GILMAN LIBRARY, Meeting,
Library, 7 p.m., see Checkout
- Wed. 4 BINGO, American Legion Hall, 6:30 p.m.
- Thu. 5 GIRLS SOCCER vs. Derryfield, 4 p.m.
BOYS SOCCER @ Portsmouth Christian, 4 p.m.
- Fri. 6 CABLECAST ON SCHOOL LAND PURCHASE,
First Showing, Channel 25, 9 p.m., see story
AFRICAN CHILDREN'S CHOIR, Moore Chapel,
7:30 p.m., see story
- Sat. 7 GIRLS SOCCER vs. Calvary Christian, 11 a.m.
BOYS SOCCER vs. Concord Christian, 1 p.m.
- Sun. 8 LEAF PEEPERS PANCAKE BREAKFAST, American
Legion, 8 - 11 a.m., see story
YOM KIPPUR, Begins at sunset
- Mon. 9 COLUMBUS DAY (observed)
PUBLIC FORUM ON SCHOOL LAND ACQUISITION,
Alton Central School, 6:30 p.m.
- Tue. 10 SPECIAL SCHOOL DISTRICT MEETING, Central Fire
Station, 7 a.m. - 7 p.m., see stories
GIRLS SOCCER vs. Lin-Wood, 4 p.m.
- Wed. 11 CHRISTIAN WOMEN'S LUNCH, Conference Center,
11:30 a.m., see story
BINGO, American Legion Hall, 6:30 p.m.
SPECIAL TOWN MEETING, Alton Central School,
7 p.m., see story
- Thu. 12 BLOOD PRESSURE CLINIC, Pearson Road Community
Center, 10:30 a.m. - 12 noon
GIRLS SOCCER, vs. Sunapee, 4 p.m.
- Fri. 13 DESIGN WORKSHOP, Continued on Sat. Oct. 14, for
time and place call 875-5095, see story
BOYS SOCCER vs. Sunapee, 4 p.m.
- Tue. 17 ALTON HISTORICAL SOCIETY, Annual Meeting and
Pot Luck Supper, 6 p.m., see story
- Wed. 18 BOYS SOCCER, NHIAA STATE, 3 p.m.
BINGO, American Legion Hall, 6:30 p.m.
- Thu. 19 GIRLS SOCCER, NHIAA STATE, 3 p.m.
- Fri. 20 BOYS SOCCER, NHIAA STATE, 3 p.m.
- Sat. 21 GIRLS SOCCER, NHIAA STATE, away, TBA
- Tue. 24 ALTON GARDEN CLUB, Meeting, Congregational
Meeting House, 1:30 p.m., see story
GIRLS SOCCER, NHIAA STATE, away, 7 p.m.
- Wed. 25 FLU SHOT CLINIC, Pearson Road Community Center,
1 - 2:30 p.m., see story
BINGO, American Legion Hall, 6:30 p.m.
- Thu. 26 BOYS SOCCER, NHIAA STATE, away, TBA
ASSEMBLE Main Street, Pearson Road Community
Center, 6:30 p.m.
- Sat. 28 SUPERVISORS OF CHECKLIST, Session,
11 a.m. - 12 noon, see story
BOYS SOCCER, NHIAA STATE, away, 6:30 p.m.
- Sun. 29 DAYLIGHT SAVINGS TIME ENDS, Reset your clocks
back one hour, change smoke detector batteries
- Tue. 31 HALLOWEEN
"TRICK OR TREAT" in Alton, 4 - 7 p.m.
"AFTER TRICK OR TREAT HALLOWEEN PARTY,
Alton School PTSA, 6 - 7:30 p.m., see story on pg. 1

TO LIST YOUR EVENT SUBMIT WRITTEN INFORMATION TO:
(1) P. O. Box 210, Alton Bay, 03810 or (2) Farmington National Bank
(Main Street box). **Be sure to include a phone number.**

VOTING INFO...

SPECIAL TOWN MEETING OCT 11

By Ray Houle, Town Administrator

A special town meeting is scheduled for Wednesday, October 11, at 7 p.m. at the Alton Central School. The purpose of the meeting is to ratify the labor agreement between the Town of Alton and the American Federation of State, County, Municipal Employees Council 93, AFL-CIO, Local 534.

This agreement was entered into between the town and the union representing the town's Highway Department workers too late to be included at the Annual Town Meeting last March. This means those employees have not had a pay increase in almost two years.

The contract contains almost exactly the same provisions as the previous contracts. There is a call for a 3 per cent increase in salary which is the same as received by other town workers after the last Town Meeting. No additional funds are required for this year due to two factors. One is that the town has watched its spending carefully and has surplus funds remaining. The other is that because of the inability of the town to hire employees in the Highway Department, there have been several vacancies which have resulted in funds not being spent in the department's budget.

Further information is available by calling Ray Houle at 875-2161 if you have any questions.

GENERAL ELECTION ABSENTEE BALLOTS

The General Election will be held at the Alton Central Fire Station on Route 140 from 7 a.m. - 7 p.m. on Tuesday, November 7. Applications for absentee ballots are available at the Town Clerk's Office. A registered voter must complete an application before a ballot can be mailed. Absentee ballots will be accepted on Monday, November 6, at the Town Clerk's Office, which will be open until 5 p.m. The office will be open as usual on election day from 8:30 a.m. - 4:30 p.m.

CHECK THIS OUT!

By MaryBee Longabaugh, Supervisor of Checklist

Non-registered voters who wish to use an absentee ballot for the General Election on November 7 need to get the voter registration card filled out at the Town Clerk's Office, see the Supervisors of the Checklist when they meet September 30 and October 28 at Town Hall, 11 a.m. - 12 noon, or vote in the Special School District Meeting on October 10.

Filling out a voter registration card does not automatically put you on the checklist, unless it is done at a ballot election. Generally you have to wait for the supervisors to meet in session to approve applications. The list will be updated the first week of October and the first week of November.

You must bring two forms of identification with you, one of which proves your physical address in Alton. A P. O. Box does not fulfill the requirement of physical address.

Also, many of you who voted in the State Primary on September 12 came in as Independents and failed to fill out the form with the supervisors afterwards to return you to Independent status. Unless you get that form filled out before the next primary, you will find yourself listed in a designated party. Check your status out the second week of October when the new list will be posted.



Main Street's Information Center

SCHEDULES

CHURCHES:

- Baha'i Fireside — Thu., 7:30 p.m., Holway Residence, Old New Durham Road
- Bay Church — Sun. School, 9:30 a.m.; Woship Services 10:45 a.m. and 6 p.m., Moor Chapel of the Alton Bay Christian Conference Center; Wed. night Family Supper, 6 p.m. and Fellowship Groups, 7 p.m., Lombard Center Dining Hall; Rev. Robert H. Hett, Pastor, Rev. John Fogell, Assoc. Pastor
- Community Church — Sun. Services, 8:30 and 10 a.m.; Baptist Meeting House, Main Street; Wed. Day Camp, June 28 - August 23, 8 a.m. - 5:30 p.m.; Rev. Peter Bolster, Pastor;
- First Free Will Baptist Church — Sun. School, 9:45 a.m.; Church, 11 a.m.; Evening Service, 6 p.m.; Wed. Prayer Meeting, 7 p.m.; Depot St., New Durham; Pastor James Nason
- St. Joan of Arc — Weekend Masses in Tent by Parish Hall; Services, Sat., 5 p.m., Sun., 8 and 11 a.m., Weekday Masses in Parish Hall; Mon. - Sat., except Wed., 8 a.m.; Confessions, Sat., 4 p.m. or by appointment; Fr. Richard Wegman, Pastor
- Wolfboro Bible Fellowship — Sunday School, 9:30 a.m.; Worship Service, 10:30 a.m.; Evening Service, 6 p.m.; Wed. Prayer Meeting, 7 p.m.; Route 28; Pastor Scott Button

GILMAN LIBRARY: 875-2550

Mon. and Wed., 11 a.m. - 7 p.m.; Tue. and Fri., 9 a.m. - 5 p.m.; Sat., 9 a.m. - 1 p.m.; closed Thu. and Sun.

SENIOR MEAL SITE: 875-7102

Mon - Fri., 10 a.m. - 2 p.m.; Pearson Rd. Community Center

SOLID WASTE CENTER: 875-5801

Sun., Mon., Fri., and Sat., 7 a.m. - 4:45 p.m.

Closed Tue., Wed., and Thu.

Rines Road Pit — Sat. and Sun., 8 a.m. - 3 p.m.

TOWN HALL: 875-2161

Selectmen's Office, Tax Collector, Town Administrator, Town Clerk, and Welfare Officer, 8:30 a.m. - 4:30 p.m.

Building Inspector — 875-5095 for hours and appts.

Parks and Recreation — 875-0109 for info and appts.

Planning Director — 875-5095 for hours and appts.

ORGANIZATIONS:

Alcoholics Anonymous — Tue., 8 p.m., Alton Bay Community Center

American Legion — 2nd Mon., 7 p.m., Legion Hall

American Legion Auxiliary — 2nd Mon., 7 p.m., Legion Hall

American Legion Jr. Auxiliary — 1st Tue., 6 p.m., Legion Hall

Boy Scout Troop 53 — Wed., 6 p.m., Central Fire Station

Community Services Program, Sat., 2 - 4 p.m., 875-2273

Cub Scout Pack 53 — Last Tue., 6:30 p.m., Legion Hall

Eastern Star — 2nd Tue., when meeting, 875-5211

Flying Club — 2nd Wed., 6:30 p.m., 859-7900

Friends of the Gilman Library — 2nd Tue. (in season), Library

Garden Club — 4th Tue. (in season), Congregational Mtg. House

Girl Scout Jr. Troop 630, Wed., 5 p.m., Pearson Road Community Center

Happy Hobby Doll Club — 4th Fri., 7 p.m., Pearson Road Community Center

Historical Society — Watch for announcements of programs, Apr. - Oct.; Nov. - Mar., Museum open by request, 569-2629

Knights of Columbus — 1st Wed., 7:30 p.m., Pearson Road Community Center

Lions Club — 1st and 3rd Thu., Foxy Johnnie's Restaurant, New Durham, 6:30 p.m.

Masonic Lodge — 2nd Thu., when meeting, 875-7448

Moms In Touch — Mon., call 875-2866 for location, 9:30 a.m.

P.T.S.A. — 3rd Wed., Alton Central School Library, 7 p.m.

Senior Citizens — 2nd Wed., 1 p.m., Pearson Road Community Center

VFW — 3rd Mon., 7:30 p.m., Pearson Road Community Center

CALL 875-5067 TO UPDATE THE ABOVE LISTINGS

BOARDS AND COMMITTEES

- BOARD OF SELECTMEN — 1st & 3rd Mondays, 6 p.m., 5th Monday, 8:30 a.m., Chairman James C. Washburn, call 875-2161 for appointment.
- BUDGET COMMITTEE — 3rd Thursday (twice a week in "budget season"), 7 p.m., Chairman Alan Sherwood, 293-7041.
- CEMETERY TRUSTEES — 1st & 3rd Tuesdays, 4:30 p.m., Town Hall, Chairman Shirley Lane, 875-5864.
- CONSERVATION COMMISSION — 2nd & 4th Thursdays, 7 p.m., Town Hall, Chairman Lisa Erickson-Harris, 364-6388.*
- FIRE WARDS — 3rd Wednesday, 6:30 p.m., Central Fire Station, Chairman Richard Quindley, 875-2910
- GILMAN MUSEUM COMMITTEE — Meets on call, Chairman Bill Crocker, 875-2161.*
- LAND CONSERVATION INVESTMENT PROGRAM — Meets on call, Chairman Juliet Peverley, 875-7232.
- LEVEY PARK TRUSTEES — Meet on call, Chairman Dick Jones, 875-3855.
- PARKS AND RECREATION COMMISSION — Meets on call, Chairman William Lionetta, 875-0109.
- PLANNING BOARD — 2nd Monday, 7 p.m., Chairman Bonnie Dunbar; call 875-5095 for appointment.
- SCHOOL BOARD — 2nd & 4th Mondays, 6 p.m., Chairman Joyce Hopper, 776-8733
- SUPERVISORS OF THE CHECKLIST — Meets on call, Chairman MaryBee Longabaugh, 875-5067.
- TRUSTEES OF THE GILMAN LIBRARY — 3rd Monday, 3:45 p.m., Chairman David Countway, 875-2550.
- TRUSTEES OF TRUST FUNDS — Meets on call, Chairman Joseph R. Houle, 875-7321.
- WATER COMMISSION — 2nd & 4th Thursday, 8:30 a.m., Water Department Office, Chairman Reuben L. Wentworth, 875-4200*
- ZONING BOARD OF ADJUSTMENT — 1st Thursday, 7 p.m., Chairman Fran Washburn, 875-5095.

*DENOTES A CHANGE OF INFORMATION

CALL 875-5067 TO UPDATE THE ABOVE LISTINGS

OUR ELECTED OFFICIALS

U.S. SENATE

Robert C. Smith, 307 Dirksen Senate Office Building, Washington DC 20510-2903; Phones: (800) 922-2230, (202) 224-2841, Fax: (202) 224-1353; e-mail: opinion@smith.senate.gov

Judd Gregg, 393 Russell Senate Office Building, Washington DC 20510-2904; Phones (202) 224-3324, (603) 225-7115, Fax (202) 224-4952; e-mail: mailbox@gregg.senate.gov

U.S. HOUSE OF REPRESENTATIVES

John E. Sununu, 1229 Longworth House Office Building, Washington DC 20515; Phones (202) 225-5456, (603) 641-9536, Fax (202) 225-5822; e-mail: Rep.Sununu@mail.house.gov

N.H. EXECUTIVE COUNCIL

Ray Burton, 271-3632 (Concord), 747-3662 (Woodsville)

N.H. SENATE

Leo Fraser, 225-3664 (w), 435-6626 (h)

N.H. HOUSE OF REPRESENTATIVES

Gordon Bartlett, 524-1220 (w), 524-6536 (h)

Robert Boyce, 875-7371, E-mail: rboyce@worldpath.net

Stanley Czech, 875-3815, E-mail: sczech@worldpath.net

Dave Russell, 364-7449, Fax: 7448, E-mail: russells@worldpath.net

BELKNAP COUNTY COMMISSIONER

Christopher D. Boothby, 527-5400

BOARD OF SELECTMEN

James C. Washburn, Chairman, 364-7413

Harold M. Bothwick, Jr., 875-6262

Stephan McMahan, 875-6322

Arnold ("Pete") Shibley, 875-2849

Reuben Wentworth, 875-3388



TOWN HALL NOTES
By Ray Houle
Town Administrator

YULETIDE AT THE LAKES

Recently a Steering Committee was formed of Lakes Region businesses and organizations to create a regional identity for the area during the holiday season. The Steering Committee is proud to introduce "Yuletide at the Lakes: Lakes Region, New Hampshire." This is a regional community economic development program brought to reality through the efforts of the Belknap County Economic Development Council and many other organizations and citizens.

The Yuletide at the Lakes theme will be used to promote the activities and events around the region during the holiday season from mid-November through New Year's Eve. It will feature a comprehensive regional calendar of seasonal events, package deals, discounts, and a website to be marketed not only to local residents but also the Seacoast and visiting tourists encouraging their return to the Lakes Region for the holidays. In addition the hope is to build community awareness and involvement by local residents, organizations, and businesses.

Yuletide at the Lakes provides Alton a great opportunity to promote our area as a year-round destination and reaffirm that Alton is a great place to live and work. To become more than just a holiday events calendar, Yuletide at the Lakes needs all of us to create a true regional draw. To be successful we need your help. It's important Alton be a key community in this effort, and it certainly isn't too early to start planning for the holidays!

If your organization or business has an event already planned, let us know so we can make sure you're included. If not, here is the opportunity to start new holiday traditions. This office and the Board of Selectmen will be happy to work with you to improve an already existing tradition or build on a new one.

If you'd like more information or want to let us know about an event already planned, call this office at 875-2161. If you'd like to start a tradition, we can help with that as well.

Alton is beautiful during ALL the seasons. Let's let the rest of the world know the beauty of Alton in the winter as well as the summer.

AMERICAN LEGION AUXILIARY

By Millie Pierce, Unit Secretary

The Alton American Legion Auxiliary is having its annual Leaf Peepers Pancake Breakfast on Sunday, October 8, from 8 - 11 a.m. The cost is \$3/adults and \$2/children under 12. The breakfast consists of pancakes (blueberry, chocolate chip, or regular) or scrambled eggs with bacon or sausage, orange juice, and coffee. Join us and bring the whole family.

The Junior Auxiliary will be starting their annual Christmas Raffle shortly. The girls have started the year off by making donations to the Alton Food Pantry and the Auxiliary Departments' Project, "Keeping the Light of Hope Shining Undimmed for our Veterans." The juniors are looking forward to a fun and prosperous year.

Also, in November we will be having our annual Turkey Raffle which is held in the Dugout. The date is Sunday, November 12. Join us for a fun time.

There is Bingo every Wednesday evening starting at 6:30 p.m. Players are always welcome.

Remember, thanks to our veterans we have what we have today, OUR FREEDOM!

McGrath's Food Center

- Friendly & Courteous Service
- Full Service Deli
- USDA Choice Meats
- Fresh produce
- In Store Bakery
- Wine Section
- Beer Section
- Weekly Specials
- Milk Club
- Special Orders welcome
- Veggie Platters
- Cheese/Cracker Platters
- Deli Platters
- All your grocery needs in one stop!

Dear Valued Customers,
Please bear with us as we go through many positive changes in our store to serve the community better.

P.O. Box 490 Alton, NH 03809
875-6104

Winter Hours:
Mon.-Sun. 8 am - 8 pm

Call ahead for sub orders.

"Prevent Ice Damage To Your Dock"

**WINNIPESAUKEE
AQUATHERM SERVICE**

- Sales • Installation • Rental • Repair
- Weekly Checks

EARL BAGLEY
875-3864

Hall's Hill Star Route, Alton, N.H. 03809

SPINNING

Bicycling Conditioning

AEROBICS

Morning and Evening Classes

Denise Merritt, M.D.



10 classes/ \$50 (requires preregistration for each spinning class)
\$200/ 6 months (guarantees a bike or aerobics class two times/week)

call 875-5577

*Now Offering
Complete Air Conditioning Service
N.H. Motorcycle Inspection*



RB

AUTO IMPORTS SERVICE

AUTO REPAIR-ALL IMPORTS & DOMESTICS, TOO
 ROUTE 11 HC 73 BOX 532 ALTON BAY, NH 03810

- MAJOR & MINOR WORK
- ENGINE REBUILDING OUR SPECIALTY
- NH STATE INSPECTIONS
- DEPENDABLE SERVICE AT COMPETITIVE RATES

Monday - Saturday Over 28 Years Experience
 Call for an Appointment Roger Bergeron, Owner

603-875-6148

gourmet coffee * gourmet tea



**Gift Baskets
Center Pieces
Favors**

Your ideas make it special.
 Let it be an anniversary, birthday,
 wedding, shower, raffles, sympathy,
 thank you, congratulations, get well
 or baby.
 Call and place your order now.

hand / body lotion * shower gel * foam bath

* flavored spoons * jelly belly beans * chocolates * baskets * bunnies *
 * candles * ceramics * pancake mix * syrup * jelly * biscuits *

(603) 875-2266
 or
 1-888-214-9368

Tired of your kitchen?

*Alton Building of Cabinets
& Furniture Restoration*

Daniel Doherty

- Tile Work
- Quality Cabinets
- Custom Woodworking

No job too big or small!



We are now offering Kitchens "to order"
 that are attractive and affordable.
 Stop by for a quote. We deliver & install!

For a free estimate call Dan: (603) 875-6488



TO PROTECT AND SERVE By Detective Glenna Heath

OUR CRUISERS ARE CRUISING

A resident sent us an e-mail to ask: "I live on a back road in Alton. Why do I never see a police car?" This is a worthwhile question and gives us the opportunity to clear up some misconceptions.

I'm sure most people don't have time to watch constantly for a cruiser and keep an active count. How many times would a cruiser need to pass your home for you to notice it once? Sometimes we think it unusual to see the police car when in fact it had passed by three times already that day.

Our department's goal is to patrol the entire town evenly without giving special emphasis to the state roads. We try to ensure that the secondary roads are patrolled and even get to the hard-to-reach places as often as possible, but Alton is one of the biggest towns in the state. We have nearly 84 square miles to cover, and when we are at full staff, often have only two officers on duty. We utilize part-time officers to augment patrol when possible, but due to budgetary constraints, we can't always do this.

It's also important to remember that traffic control is a secondary function of the police department. We first must respond to calls for service from citizens who need our help. While Alton is a small town, we have more calls than most folks realize. In 1999 we had 5,445 calls, which translates to an average of about 15 calls every day. The Alton Police Department has a great deal of responsibility for a small town and with a 25 per cent increase in calls each year, it can get difficult at times trying to meet everyone's expectations.

This doesn't mean that this resident who sent the e-mail might not be right. If we are neglecting an area, we appreciate having that called to our attention. We have conducted many directed patrols in problem spots that people have told us about. A "directed patrol" means that an officer is assigned to that road or area for a specific time every day.

Please continue to let us know where the problems are so that we can address them. Remember that if you need us, we're on the way — 24 hours a day and 365 days per year.

CHECKED YOUR CULVERTS LATELY?

Can you believe it? A year has passed and autumn is once again with us. This means that the leaves will begin to change and fall from the trees. Where do they land or blow? Many of them head for the culverts. This creates a problem with clogging which can then lead to flooding, either on the road or on your property — or both!

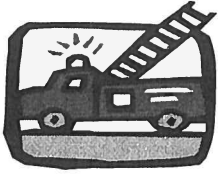
The moral of this seasonal story is to check your culvert(s) before the snow flies. Be sure they are clear for the autumn rains and spring runoff.

ENERGY CO-OP HAS NEW NAME

This group has completed its second year of finding good prices for its members wishing to save money on their fuel bills. It has also begun to encompass other areas, such as long distance and intrastate phone service and a restaurant discount program. The new name for the organization is "Our Town Consumers Choice."

For a short time there will be another pre-buy oil option and the chance for a good price on propane.

If you wish to explore becoming a member or just get more information on exactly what is available, call 776-2488. You can also contact them at <www.ourtowncoop.com> if you have access to the Internet.



FIRESIDE CHATS
By Russ Sample
Alton Fire Chief

LOTS OF FIRE BUSINESS

This summer has been hectic in many ways due to Emergency Medical Service (EMS) needs continuing to grow. Service calls for July were 16 fire related and 32 EMS, while in August calls were 16 fire related and 40 EMS.

As the fall approaches, the home heating season begins. We must all remember either to clean or have all heating appliances serviced as necessary. The fall season also brings back our intern fire science students, two boarding at the West Alton Station and two at the Central Fire Station. These students must meet the same training and operational requirements as regular call firefighting personnel, as well as the day-to-day service needs.

The fund-raising program for the Thermal Imaging Camera has grown to a balance of \$19,625. This amount includes many gifts and a VERY generous anonymous donor willing to match the balance of funds needed to achieve the final goal. Our personnel continue to meet the rapidly changing needs at every emergency incident and appreciate your support through generous donations to the camera fund, as well as the on-going rescue equipment fund.

October is Fire Prevention Month. Fire/Rescue personnel will be visiting your children at the Alton Central School to share home safety and fire safety tips. Educational opportunities are available for the adults to participate in as well. Be sure to look for the up-coming announcements in the weeks ahead.

Fall is clean up time and some folks may need to burn brush or clear burnable wood. A permit is required for any outside burning and may be obtained at the Alton Central Fire Station. HOWEVER, leaves cannot be burned. Beginning January 1, 2001, a permit is required for any outside burning anytime there is no snow covering the ground.

As always, the men and women of the Alton Fire and Rescue Department look forward to answering any questions you may have — especially those that may encourage you to become a member of our department and serve your community.

CHECK THAT WELL COVER!

By Brian Boyers, Alton Code Official

It's that time of year to start thinking about closing up the summer home again. One of the most important items on the list is securing your well cover for the season. Not only are you preventing unwanted debris and animals from entering your well, but also you are avoiding the potential of human visitors literally dropping in for a surprise inspection. If your wooden well cover looks decayed, it is a good idea to replace it with a concrete cover, which may be purchased at any masonry supply. If this option is not possible, rebuild the existing cover. Be sure it will withstand a substantial weight.

When replacing a cover with wood, be aware that such a cover is fairly easy to remove. It needs to be properly fastened or weighted down. Remember, as homeowners YOU are responsible for your wells. Do not let a safety hazard exist on your property.



MAIN STREET CAFE

RTE. 11, MAIN ST., ALTON 875-4745

SERVING BREAKFAST, LUNCH AND DINNER

HOURS OF OPERATION:

TUES.-SAT. 6:30 - 2:00

FRI. & SAT. 4:30 - 8:30 (DINNER)

SUNDAY 7:00 - 1:00

****DAILY LUNCH SPECIALS****

****FEATURING SEAFOOD, STEAK AND PASTA****

LET CHEF TOM AND HIS STAFF
PREPARE AND SERVE YOU A GREAT MEAL

**"WE'D LIKE TO THANK
THE PEOPLE OF ALTON
FOR THEIR PATRONAGE,
SUPPORT AND BEST WISHES"
-CHEF TOM AND FAMILY**

Alton Circle Grocery

875-2861

Formerly Wayside Grocery

*Is NOW a Family Member
of the Stafford Oil Co.*

We Still Have The Best In

Chili

Subs

Fried Chicken

Groceries

Ice Cream

Fresh Baked Breads

Pies & Rolls

Pastries

Vegetables

Meats

Live Bait

Fishing Tackle

Auto Supplies

CITGO Gasoline
and Motor Oil





SENIOR CITIZENS CORNER
By Nancy Mooney Hebert

**Gold is treasure, red our passion!
Fall's bright leaves — ever in fashion.
Let us delight in October's glow
Even if — there's a hint of snow!**

Our September meeting was presided over by our treasurer, Liz Roberts. Ginny Myers sent word that the October trip will not take place. The September trip was cancelled for lack of interest, and Ginny feels that unless more members get involved, it will be hard to plan future trips. The seniors are very grateful for all her hard work over the years in trip planning. We have 70 members enrolled; we only hope for more active participation next year.

President Nardo thanks all those who helped with the flea market on September 9. We realized a small profit. Now we are looking for ideas and suggestions about future fund-raising activities suitable to the ages and abilities of our seniors. Thanks to Peg Bowman and Helen Stanford for providing the savory refreshments at the September meeting. We need more volunteers to help at future meetings.

Annual flu shots will be given at the Pearson Road Community Center on October 25 from 1 to 2:30 p.m. The VNA is sponsoring the clinic and asks that you have your Medicare and Blue Cross cards ready when you sign in. The one-time pneumonia shot will also be given for \$20 or through the Blue Cross card.

We thank the CAP and Claire Fitzgerald, Site Manager, for scheduling the interesting guest speaker on September 14. Mr. Ralph Van Horn, a retired teacher and expert on the Shakers, gave a very informative and delightful talk about

the Shakers and their village at Canterbury. If you have never been to the village, it is open through October.

Finally, we send our best wishes and prayers to Lillian Grigg who has been ill.

Our next meeting is Wednesday, October 11, at 1 p.m. when we will say good-bye to our "snow birds" who will head South by the end of the month! Happy Halloween!

**MAKE THE HOLIDAYS BRIGHT!
SUPPORT MRS. SANTA FUND**

Each year many community service organizations, led by the Alton Fireflies (the women's auxiliary of the Alton Fire Department), come together to provide the less fortunate children of Alton a Christmas bright with promise. For several years now the Mrs. Santa Fund has provided gifts for children newborn to age 17 and some of our senior citizens as well. This list grows longer each year.

Once again the generosity of the community is needed by Mrs. Santa's Elves. New and good-used clothing and toys may be dropped off at the Alton Town Hall until December 1. Cash donations, which are used to purchase warm coats and boots, are also welcome. Donations are to be made payable to Mrs. Santa Fund and are sent to either P. O. Box 755, Alton 03809 or c/o Bank of New Hampshire, Main Street, Alton 03809.

If you need assistance in providing necessities for your children or know of a family who would benefit from this program, please contact Mrs. Santa's Elves by December 8. Call Elf #1, Daryl Czech at 875-3815 or Elf #2, Sharon Hannafin at 875-3079.

Make this holiday season a merry one for all of our friends and neighbors in the Alton community by once again helping Mrs. Santa's Elves.



WARM UP YOUR HOME WITH ... K-1 KERO MOBILE BLEND
OILS
HOME HEATING OIL

HEATING SYSTEMS INSTALLED

**CARDINAL AND
GLIDDEN OIL CO. INC.**

CROWLEY ST., FARMINGTON
MALCOLM GLIDDEN, PRESIDENT CHRISTOPHER GLIDDEN, VICE PRESIDENT
RICHARD CHRISTOFORO, TREASURER

DELIVERIES IN ALTON
Also in FARMINGTON - UNION - MIDDLETON
MILTON - SANBORNVILLE - MILTON MILLS
NEW DURHAM - ROCHESTER

**24-HOUR BURNER SERVICE
FOR OUR CUSTOMERS ONLY**

**755-3562
1-800-640-3562**

EXCEPTIONAL SERVICE
VERY LOW RATES
30% Multi-Car Discounts
Extra Credits For Clean
Driving Records



**LIBERTY
INSURANCE**

COMBINE HOME & AUTO
INSURANCE FOR
BIGGER SAVINGS
Monthly Payment Plans
Inc. EFT Bank Deductions



LOW COST CAR INSURANCE

*Call Us For a Quote
Compare & Save*

755-3511

10% Non-Smokers Discount on Homeowners Insurance
Superior Coverage • Prompt Claim Service • Free Replacement Cost Analysis Of Your Home

Member Of Gateway Insurance Group, LLC.

BEAUTIFYING ALTON



Left to right, Bill O'Brien, Edythe DeFrancesco, and Tony DeFrancesco are just three of the many members of the 11-D Association who provide plants and maintain them on the road islands of both entrances to Route 11-D. The association was formed to beautify and care for that road, as well as keep it safe and clean for all who live, rent, and tour it.

ARE YOU ON OUR MAILING LIST?

Main Street is distributed by mail without charge to all Alton residents. Each postal patron with the Zip Code 03809 or 03810 should receive a copy automatically.

If your mailing address has a different Zip Code than either 03809 or 03810 and you reside in Alton, you may receive Main Street free each month by calling 875-7374, E-mailing jtc@worldpath.net, or sending your mailing address to Post Office Box 210, Alton Bay 03810.

HIGHWAY HAPPENINGS

by Ken Roberts
Highway Agent



PROJECTS FINISHED AND ONGOING

Already the trees are turning and the nights are cooler. Did we have a summer?

Rines Road has been widened and chip sealed. Mirimichie and Lily Pond Roads have been completed with new culverts for drainage, as well as widened and graveled. A hammer head shape turn around was created for easy access on Mirimichie Road.

Bartlett Road was next with regrading and widening the surface. The next project on the list was Davis Road for regrading and widening, and if all went well, it has been all or nearly all completed.

Depending upon the weather, we should be over at Sunset Shores in October. That job will be to regrade and widen the road, as well as install new culverts for the drainage.

Again, we appreciate your patience during all of these projects and continue to thank you for your understanding. We also welcome your concerns; let us know about problems you may find of which we have no awareness. Do not hesitate to call 875-6808. Please expect delays; we apologize for the inconvenience.

Our School Street Candy is so sweet,
So much fun and such a treat,
You always see her on the go,
So you'll never guess she's the BIG "4 OH!"

HAPPY 40TH BIRTHDAY, CANDOLIOUS!
Love-Scooby, Eldoman, Wanna, MamaJo, Shade and Elroy

Help Is Just Around The Corner...



Just head to the store with no long lines, the best advice around and service like it ought to be!

ALTON TRUE VALUE
COUNTRY SUPPLY 875-3241
MONUMENT SQUARE



THE CHECKOUT DESK By Holly Brown Librarian

OUR LIBRARY IS A VERY BUSY PLACE

Pre-school story hour has resumed and this year will be held on Friday mornings from 10:15 - 11 a.m. for children ages 3 to 5. There is a limit of 15 children per session, and they should be pre-registered. Please note that there will be no story hour on Friday, October 13.

If you were not able to attend the Alton School Deliberative Session on September 9, we have it on videotape which is available for circulation. Check it out (literally) before the October 10 vote on this very important issue.

The Book Discussion Group will meet on Monday, October 2, at 6:30 p.m. in the library meeting room to discuss *Circle of Friends* by Maeve Binchy. New members are always welcome. If you wish to join the discussion and need a copy of the book, please stop in at the library.

The Friends of the Gilman Library will meet on Tuesday, October 3, at 7 p.m. We are looking ahead to the holidays and will be planning the Annual Holiday Tea. The Friends are pleased to welcome two new members and would welcome many more. Please attend the next meeting to share your ideas and feel free to bring a friend. If you are not able to attend the meeting but are willing to help, please call 875- 2550 or stop in to sign up.

We have the following World Books: Millennium Editions of the Encyclopedia and Dictionary; the Encyclopedia of Science; the Student Discovery Encyclopedia; and the Encyclopedia of People and Places. Also added to our reference collection are the DK Millennium Atlas with a

Millennium Earth Images CD-ROM and the DK Atlas of World History. We hope everyone will come in to enjoy these beautiful new reference materials. They were bought with a donation from the Trust Fund established by Oliver J. M. Gilman, Eveline L. Palmer, and Agnes Thompson in memory of Annie A. Wheeler for the purchase of library books.

Our Annual Mum Sale, held on September 16 and 17, was a great success. Thanks to all of you who took part through volunteering at the sale or making a purchase. We are very grateful to Sunflower Gardens for providing the glorious mums and then making a very generous donation to the Gilman Library Building Fund. We were even able to enjoy sunshine when the weather forecast predicted otherwise! Words alone cannot express how much we appreciate the support of the Friends of the Gilman Library, Sunflower Gardens, and our community.

CONSERVATION COMMISSION SEEKS ADDITIONAL TALENT

By Lisa Erickson-Harris, Chairman

Alton's Conservation Commission is beginning a number of new initiatives and is seeking additional participation. New projects include: greenways planning jointly with abutting towns, acquisition of additional open space, a natural resource inventory, and joint projects with the enrichment program at Alton Central School. Our mission is to protect the natural resources in Alton to maintain the town's rural character.

The commission is seeking permanent members as well as individuals who are interested in helping with specific projects. No special skills are required – just an interest in protecting and promoting the environment!

If interested, please contact Alton's Land Use Office 875-5095, or call me at (603)364-6388.

**TIRE
WAREHOUSE
875-TIRE(8473)**



**ALTON AUTO
CENTER
875-AUTO (2886)**

Rt. 28 South, Alton, NH

*****NEW SERVICE AVAILABLE!!******

Complete transmission fluid change !

Normal service only remove less than half of your old fluid and you pay up to \$90 . A rebuilt transmission will cost up to \$1500. We now have the machine that completely removes ALL fluid from your transmission for proper replacement!! Avoid costly transmission repairs!!

\$89.95 plus cost of filter if needed only



WE STOCK AND SELL LAWN & GARDEN , ATV TRAILER AND AGRICULTURAL TIRES AND RIMS.

You can depend on us....



Because we depend on you!

SCHOOL DELIBERATIVE SESSION

By Cathy Fraser

About 100 Alton residents attended the School District Deliberative Session on September 9 to discuss the warrant article for which there will be a special election on October 10, Central Fire Station, 7 a.m. - 7 p.m. The warrant article, if passed, would allow the School Board to expend funds, already set aside in a capital reserve, for the purchase of property on which to build a new school.

The Site Acquisition and Building Committee described three parcels of land for which there are purchase and sales agreements pending the outcome of the vote. The parcels are located on Route 28 about a mile south of the Alton traffic circle. The largest one is approximately 61 acres and the two smaller ones abut, allowing for additional frontage on Route 28 that the state requires for proper access to the site.

The chief issue discussed regarding the property was wetlands — the property has two such areas on it. The land is workable, according to the soil expert in attendance who has walked the property and done tests on the soil. Additional testing will be done in the next few weeks. The committee acknowledged that there will be development costs associated with the wetness of the soil. Wayne Fraser, chairman of the committee, stated that if the tests are negative or the costs for development are deemed too high as to make the land “unsuitable” for use, the board can withdraw from the purchase and sales agreements.

Another issue discussed was safety. The committee presented a plan to widen Route 28 in front of the property which would include adding a turning lane on the highway. The area would be designated a school zone and enforcement of the speed limit would be done.

The next meeting will be held on October 9; see page 1.

NEW AT THE GILMAN LIBRARY

FICTION

Burke, James Lee
Coulter, Catherine
Goodkind, Terry
Harris, E. Lynn
Howard, Linda
Hoag, Tami
Iles, Greg
Kellerman, Faye
McCaffrey, Anne & Scarborough, E.
Muller, Marcia
Sanders, L. & Lardo, V.
Southard, Duke
NONFICTION
Edward, John
Greene, Bob

Purple Cane Road
Riptide
Faith of the Fallen
Not a Day Goes By
Mr. Perfect
Dust to Dust
24 Hours
Stalker

Acorna's World
Listen to the Silence
McNally's Folly
A Favor Returned

One Last Time
Duty: A Father, His Son, & The Man Who Won the War
The German Shepherd Dog
Who Moved My Cheese

Hegewald-Kawich, Horst
Johnson, Spencer

CHILDREN

Bunting, Eve
Byars, Betsy
Gibbons, Gail
Partis, Joanne
Sis, Peter

The Memory String
Me Tarzan
Apples
Stripe
Dinosaur

AUDIO CASSETTES

Braun, Lilian Jackson
Goldsmith, Olivia
Harris, Thomas
Koontz, Dean
Sinatra, A Tribute

The Cat Who Tailed a Thief
Young Wives
Hannibal
Lightning

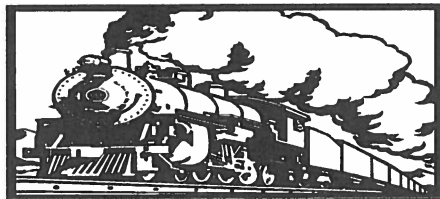
VIDEO CASSETTES

Goodnight, Mr. Tom



SEE COMPLETE LISTING AVAILABLE AT THE LIBRARY

NEW DURHAM RAILWAY STATION



SERVING LUNCH AND DINNER

MONDAY THROUGH SUNDAY 11:30 AM TO 9:00 PM

ITALIAN TRY OUR NEW MENU AMERICAN

TAKE OUT MENU = 1-603-859-5696

Entertainment Schedule - September (8:30-1:00 am)

The Dave Berry Band - Sat., Oct 7th & Sun Oct 8th

The Mike Welch Band Fri., Oct 13th

Lydia Warren Sat., Oct 14th

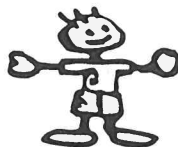
The Jonathan Webster Band - Fri., Oct 20th

The Ron Jones Band - Fri., Oct 27th & Sat., Sept 28th

**COME SEE OUR NEW TAVERN AND DECK
FROM ALTON ROTARY 2 MILES SOUTH ON RT 11**

FUNCTIONS - CATERING - BIRTHDAY PARTIES (call for details)

FOR THE FUN OF IT
by Kellie M. Troendle
Recreation Director



OCTOBER FUN IN ALTON

The Parks and Recreation Department has some fun events this month. If pre-registration is needed, sign up at the Parks and Recreation office in Town Hall Monday - Friday, 8 a.m. - 4:30 p.m. For information call 875-0109.

Extreme Dance with Julie Libby — Grades 1 - 5 and Grades 6 - 8: Extreme Dance Lessons with Julie Libby will be held after school on Mondays, October 23 - November 27 in the cafeteria, \$29. Grades 1 - 5 will meet 2:50 - 3:35 p.m. and Grades 6 - 8, 3:40 - 4:25 p.m. Extreme Dance includes: Street Funk, Hip Hop, Video Funk, and TV + Video Styles. Beginners and up, male and female, great recreation dance program! Dress casual, shorts, t-shirt, and sneakers. Pre-register before October 17.

Crafty Kids Corner — Ages 3 - 5: Children learn new art forms in conjunction with a theme activity. Activities include: drawing, painting, and sculpting. 9 - 10:30 a.m. at the Alton Bay Community Center, Tuesday, October 24, \$2. Pre-register before October 17.

Happy Halloween Party — Ages 3 - 5: Includes Halloween theme games, costume parade, decorating kiddie cupcakes and cookies, and more. Wear a Halloween costume. 9 - 10:30 a.m. at the Alton Bay Community Center, Tuesday, October 31, \$2. Pre-register before October 17.

Dog Obedience Lessons: These lessons are offered on Mondays, 6:30 - 7:30 p.m. at the Alton Bay Community Center, \$80/six weeks. Call instructor Monique Tenander, 875-7432 or Parks and Recreation for the next session dates.

HOW SWEET IT WAS!

By Mike Phelan

On August 25 the Alton Youth League (AYL) honored its Cal Ripken Program players with an awards presentation conducted by AYL President Gary Dudman. Immediately following the ceremony, there was the traditional ice cream sundae treat made possible by generous donations from Alton Circle Grocery, East Alton General Store, and McGrath's Food Center. These three establishments were responsible for many happy faces and bellies by the end of the evening.

The AYL, due largely in part to tremendous volunteer efforts, enjoyed a very successful year. Alton hosted the Cal Ripken District 6 - 12 and Under Tournament which saw our very own Suncook Valley team win the championship round against a very good Kingswood squad. Representing Alton on the Suncook team were David Currid and Jim Grant. Both boys had the fortunate experience of going to the State playoffs in Rochester. Suncook did not do as well there; however, the memories are etched into their minds forever.

The 2001 season will be upon us before we know it. We look forward to the continuing support we had this year and making the new season as memorable as the last.

SPORTS RECORDS

ALTON CENTRAL SCHOOL

The following is an update on how the teams are doing for the first month.

Varsity Girls Soccer - 5 Wins/1 Loss

Varsity Boys Soccer - 0 Wins/4Losses/1 Tie

Varsity Volleyball - 1 Win/1 Loss

JV Volleyball - 2 Wins

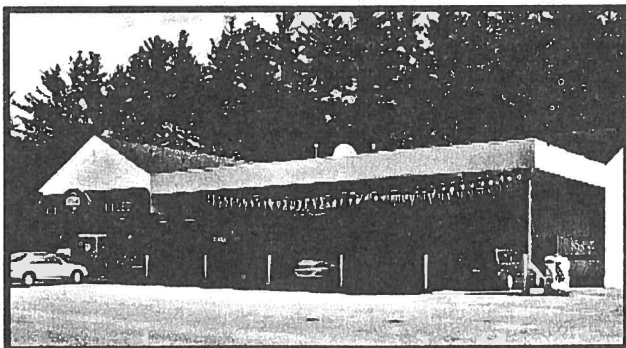
Golf Team - 0 Wins/7 Losses



Miller is
out to
earn your
tire
business!

- World Class Service reputation**
- Nearly 2000 tires in stock!**
- Warehouse pricing**
- Two tires in 10 minutes**
- New facilities**
- Clean family style waiting areas**
- Clean restrooms**
- OPEN Thursdays till 8pm and Saturdays till 4pm**
- Two locations:**
Route 28 Wolfeboro
Route 16 Tamworth

Come to the
People & Tires You Can Trust!



Rt. 28
WOLFEBORO
569-1068
1-800-287-1068

Rt. 16
TAMWORTH
323-7933
1-877-323-7933

CLASSIFIED ADS

Alton residents may place classified ads in any issue of Main Street. As a public service ads are primarily for *noncommercial* private individuals who have items for sale (except real estate for sale or rent), items or services wanted, free items, personals, or help wanted notices. The rate is \$1 for each noncommercial ad of 35 words or less. Each additional 35 words costs \$1. (There is no charge for "Cards of Thanks" or ads under the "Free" and "Ride Sharing" classifications.) The rate for commercial ads is \$12.50 per column inch. Main Street reserves the right to refuse any ad, or edit it for length/style. Ads must be submitted with payment to Post Office Box 210, Alton Bay 03810, by the 15th of the month preceding publication. Submissions may also be placed in the Main Street box at the Alton branch of the Bank of New Hampshire. Ads **must** contain a phone number.

FOR SALE

1983 CAMPER MOTOR HOME, Coachman, Chevy engine, 48,000 miles, 6 new tires, generator, and air conditioning, really good condition, \$9,000 or BO, call for details. 875-5931.

1997 HARLEY SPORTSTER, low miles, extended warranty, extra chrome and more, \$7,000; Dryer, General Electric, works fine, \$75; Washer and Dryer set, both work but need a little work, \$25 for the set. 875-6969.

1987 CHEVY BLAZER, full size with 7 1/2' Fisher plow, V-8 305 runs great, needs some body work, plowed only 1 season, asking \$1,800 or BO. 875-2866.

1979 CHEVY 4x4 TRUCK for parts, rebuilt 305 S.B. with 1,000 miles, new windshield, rear tires, good transfer case, body rough, tranny blown, \$600 or BO, ask for Josh. 859-3991.

SAILBOAT, 16', fiberglass, with trailer, \$800 or BO. 875-3544.

ROWING DINGHY, 8', fiberglass, excellent condition, \$145. 569-9313.

BOAT, MOTOR (55 HP Evinrude), AND TRAILER, \$500 as is; Canoe, \$125 or BRO. 875-2860, leave message if no answer.

OAK PEDESTAL TABLE, 6 carved high back chairs, large leaf, seats 8, \$700; and Mahogany Table, 6 padded chairs, one leaf with custom pad, \$300. 776-1466.

AVALON WOOD STOVE, 2 years old, asking \$600 or BO. 364-6226.

PAPA BEAR WOOD STOVE, Large, All-Nighter, \$250 or BRO. 875-2860, leave message if no answer.

BAND SAW, 20" Delta, \$2,000, 16" Doro, \$350, 10" Jointer/Planer, \$800; Hand Tools, planes (metal and wood). 569-4200.

SEWING MACHINE, Touch & Sew, Singer Deluxe Zig-Zag, Model 758, new, \$100 or BO. 569-4200.

TUFF BOX, for full size P.U., \$50 or BRO; Dish Washer, portable, \$25 or BRO. 875-2860, leave message if no answer.

ELECTRIC DRYER, General Electric, white; Refrigerator, Frigidaire, white, 30" wide x 60" tall; all in good and working condition, \$60 each or BO. 875-8221.

13" TIRE ON RIM (new), Dunlop radial, \$20 or BO. 364-6226.

HELP WANTED

LOOKING FOR a 14- to 17-year old to mow, rake, and shovel snow in town, \$7/hour, call Rick. 875-8837

HELP WANTED

Breakfast and lunch cook.

2 - 3 days per week.

Must have experience.

Call 875-2492

FUEL ASSISTANCE PROGRAM

Fuel assistance applications will be accepted beginning October 1. The forms are available in the Alton Town Hall or you can call the Laconia office of the Community Action Program of Belknap-Merrimack Counties, Inc. at 524-5512 for more information.

Be aware that income guidelines have increased. Even if you earn full-time wages, you and/or your family may be eligible for fuel assistance to be applied toward oil, kerosene, propane, natural gas, electricity, wood, coal, and rent if heat is included. These benefits are not welfare benefits, are not to be repaid, and are not considered income.

**ELLA MAY ADAMS**

July 19, 1900 - August 12, 2000

Born in Alton on July 19, 1900, Ella M. Adams reached her 100th birthday and then some before she passed away in August of 2000.

Ella was a life-long church person in this town. One of her vocations was as a telephone operator in Alton. She was one of the founding members of the American Legion Auxiliary in the United States at Alton and received her unique 80-year pin from the Auxiliary Unit No. 72 in March of this year. She was also a long-time member of

the Order of the Eastern Star (over 70 years).

Able to play the violin, piano, organ, and drums, Ella played in Alton Bay each summer in the band out on the bandstand in the middle of the bay. She was a gifted craft person making many displays for the library and her church, a needleworker, and a seamstress, as well as a gardener.

Internment was held at the Riverside Cemetery in Alton.

SENIOR MEALS

Program is open to all age 60 and older (875-7102). Meals served Monday-Friday, 12 noon. Suggested \$2 donation.

October 2 - 6: Mon., Chicken Filet/Gravy; Tue., Stuffed Veal Roulard; Wed., Italian Sweet Sausage/Spaghetti Sauce; Thu., Meat Loaf/Gravy; Fri., Macaroni/Cheese.

October 9 - 13: Mon., Meatballs/Gravy; Tue., Kielbasa Links or Hot Dogs; Wed., Chicken Primavera/Noodles; Thu., Roast Pork/Gravy; Fri., Cod Fish Cakes/Sauce.

October 16 - 20: Mon., Meat Balls/Gravy; Tue., Turkey Ala King/Rice; Wed., Shepherds Pie; Thu., Spinach Lasagna; Fri., Fish Filet/Lemon Slice.

October 23 - 27: Mon., Hearty Beef Stew; Tue., Herb Baked Chicken/Gravy; Wed., Seafood Newburg/Rice; Thu., Pork Sausage Links/Gravy; Fri., Veal Parmesean.

October 30 - November 3: Mon., Baked Ham/Sauce; Tue., BBQ Riblets; Wed., Cheese Omelet; Thu., American Chop Suey; Fri., Pot Roast/Gravy.

IN Main Street**FIFTEEN YEARS AGO . . .**

. . . Lester Faulkingham was elected president of Alton Senior Citizens . . . a fire rescue truck had been ordered by the Alton Fire Department to provide safe and effective evacuation of victims from life-threatening situations. Money for the new truck was raised entirely through contributions and a series of fund-raising events, started by Fire Captain Russ Sample's marathon swim from Weirs Beach to Alton Bay . . . Richard Steer of Rattlesnake Island was elected president of the United Associations of Alton with Forest Tilton of Echo Shores as vice president.

TEN YEARS AGO . . .

. . . New tax rates were set at \$9.43/\$1000, a 9.5% increase . . . the Apache Players presented the "Diary of Anne Franke" . . . the Recreation Department announced a rather extensive dance instruction program . . . it was reported that 704 voters had turned out the month before for the state primary election. The 29.5% turnout was slightly above the area and state averages.

FIVE YEARS AGO . . .

. . . The Alton Fire Department won first prize at the state fire convention for the oldest motorized fire engine with its 1917 Ford Model T . . . Afghan sales passed the 215 mark as part of the Gilman Library's expansion campaign, while the overall total dollars raised reached \$323,297 at this point . . . the Alton-New Durham Lions Club was in the midst of its annual collection of eyeglasses.



SCHOOL PLAYGROUND IN SERVICE

Quite apparent in the photo above is that the new playground is in and being enjoyed by the students in the elementary school. The Parent-Teacher-Student Association (PTSA) wants to THANK Joe Monasky, Dave Gagnon, Rick Macduff, Jim Shelton, Kurt Hussey, and John Timbrook who each put in several hours getting the old playground removed and the ground ready for the new equipment to be installed.

Early on a Saturday morning in August, the shipment arrived with all the "parts" for the new playground. To be sorted out and organized were all of the hinges, screws, bolts, nuts, and everything else needed to get the job done. By 8 a.m. 62 volunteers had showed up, and the new playground started becoming a reality. A supervisor from the playground company was present to tell everyone what went where. The whole "kit and caboodle" came together seven and a

half hours later when the new playground was completed.

Thanks to McDonalds for supplying a huge container of orange drink to quench the workers' thirst and the pizza shop for providing a "good deal" on the 25 pizzas necessary for lunch. The PTSA also thanks the following for helping them get the money together in just a year to make this playground a reality: the School Board, the maintenance money for the old playground, the voters at the Town Meeting for the \$7,500 appropriation, the \$11,000(+) raised by the PTSA, and the incredible help at construction time by so many volunteers.

Those who knew the old playground will agree it was time for it to be replaced. The students now have a beautiful, fun, and safe place to enjoy their exercise time at school. The PTSA thanks everyone who helped out that day.



**SCHOOL VOTE EXPLAINED
ON CHANNEL 25**

Alton subscribers to cablevision will have an additional opportunity to become informed on the issues involved in the school balloting being held on October 10. Local resident Bob Longabaugh is producing an informational video explaining the various points of view on the School Board's proposal to acquire three pieces of property on Route 28 South for the purpose of building a new school.

The program will premier on Channel 25 on Friday, October 6, at 9 p.m.; Saturday 10 a.m., 2 p.m., and 9 p.m.; and Monday, October 9, at 10 a.m. and 7:30 p.m. Additionally, the video recording of the Deliberative Session on the issue will be re-broadcast at 11 a.m. and 9:15 p.m. on October 9.



J.P. CHINA

RESTAURANT & LOUNGE

Rt. 11 & Riverlake West • Alton Bay, N.H. (at the Alton Bay Inn)

Entertainment in our lounge!

ACOUSTICS - LIVE MUSIC

**OPEN
7 DAYS
A WEEK**



603-875-8899

take out available



Main Street

PO Box 210, Alton Bay, New Hampshire 03810

PRSRST STD
U.S. Postage
PAID
Permit No.2
Alton Bay, NH

**CAR-RT SORT
POSTAL CUSTOMER**