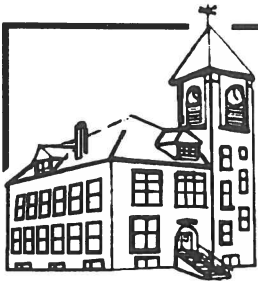


LIBRARY



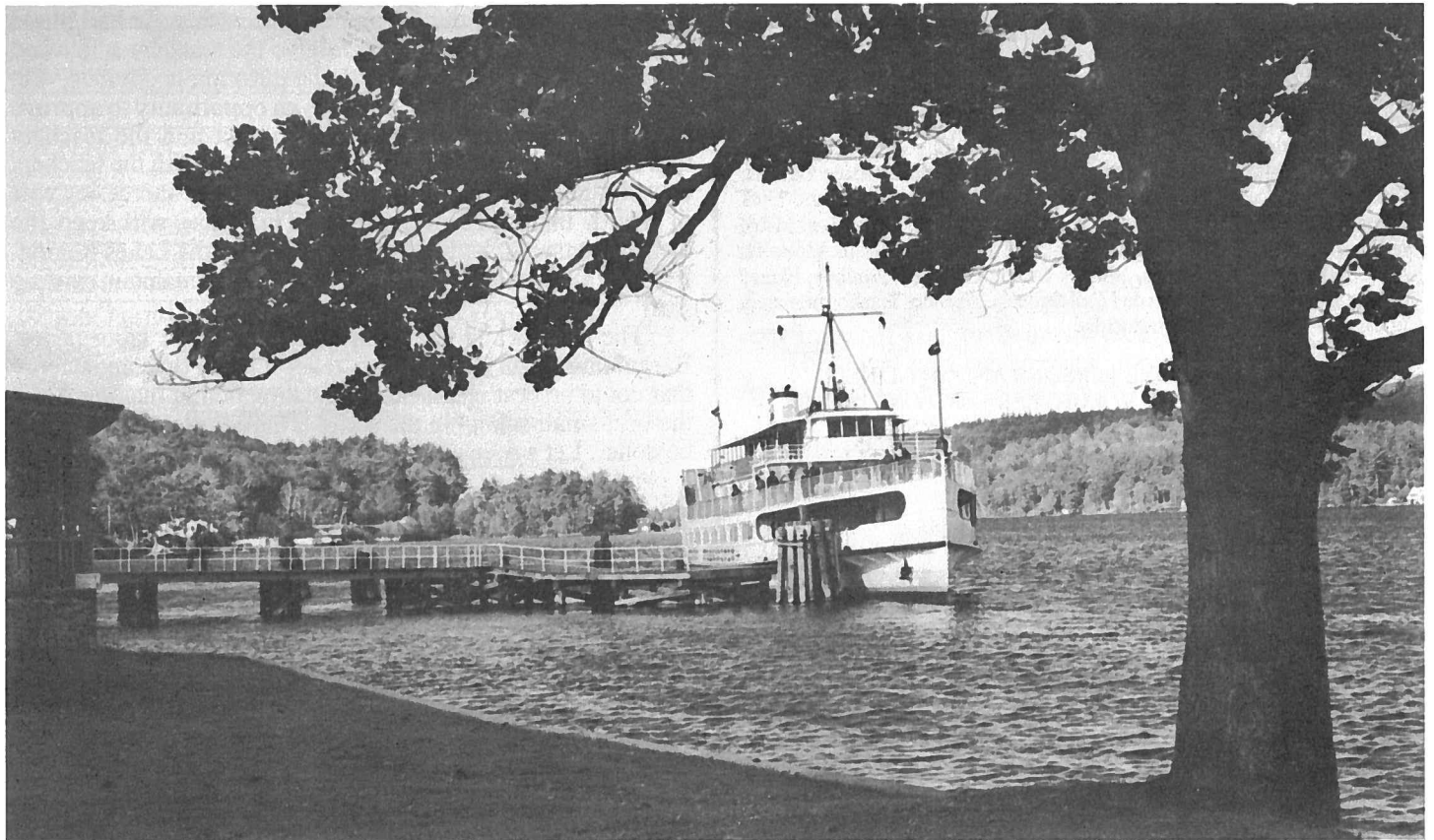
Main Street

"The Voice of Alton"

Volume XVII Number 3

Alton, New Hampshire - March, 2001

Complimentary



CANDIDATES NIGHT SET FOR MARCH 6

Main Street will once again be sponsoring a program which offers the candidates for School Board and Town offices an opportunity to appear in an open forum. There they will be asked to present their positions on why they are the best persons for the elected job they seek. To provide that extra assurance that the voters are making the wise decision, the candidates will be asked to field questions from the audience.

Put Tuesday, March 6, on your calendar. Attend Candidates Night in the Music Room at the Alton Central School at 7 p.m.

CATCH THE CANDIDATES ON TV

Alton voters will get one last opportunity to judge the qualifications of the persons running in competitive races for town offices. The March 6 Candidates' Night sponsored by Main Street will be rebroadcast on LRPA-TV's Channel 25 several times prior to election day. Showings will be on Friday, March 9, and Saturday, March 10. Check the program listings shown on Channel 24 for the exact times.

ALTON BAY PORT OF CALL TO BE TWICE A WEEK

By Bob Longabaugh

Page one of the February, 1997, issue of Main Street sadly reported that the Motor Ship (M/S) Mount Washington was eliminating Alton Bay as a daily stop on its cruise schedule and would be pulling in to its bay pier in Alton only on Thursday for the 1997 summer season. "Only on Thursday" continued on the "Mount's" schedule for the summers of 1998, 1999, and 2000.

That was in the last century. Now, starting the 21st century the M/S Mount Washington will be calling in Alton Bay on Sunday as well as Thursday from May 20 through October 21 of this year. The detailed cruise schedule for 2001 may be obtained by calling 366-5531.

ATTENTION! ATTENTION! ATTENTION!

Meals on Wheels, emergencies, or other deliveries of this type can only be accomplished when your driveway is clear of snow and sanded. Be aware that it is YOUR responsibility to have a path clear and ice free for the people who are trying to help you.



Published Monthly Since 1985

by
Voice of Alton, Inc., A Not-For-Profit Corporation
P. O. Box 210, Alton Bay, NH 03810

Frank Metcalfe, Vice President of the Corporation and Acting Publisher; Alice Calvert, Treasurer; Gerry Metcalfe, Secretary; Joseph Harris, Judith Pellowe, Jean Stone and MaryBee Longabaugh, Directors.

Main Street Staff

Editors.....MaryBee and Bob Longabaugh
Art and Layout Editor.....Robert Boyce
Advertising Manager.....Jean Stone
Subscription Manager.....Judith Pellowe
Circulation Manager.....Robert Smith
Assistant Circulation Manager.....James Washburn
Assistants: Paulette Alden, Laurie Boyce, John Brooks, Alice Calvert, Ted Cole, Barbara and Dick Cunningham, Dot Folsom, Betty and Dick Frohock, Joseph Harris, Carol and Everett Hathorn, Barbara Ingoldsby, Lyndland Family (Katrina, Greg, Jesse, Nicole), Gerry and Frank Metcalfe, Emily Pellowe, Jean Roberts, Shirley Smith, Margaret Sudbey, Nancy Thomas, Connie and A.R. Van de Meulebroecke, Frances Washburn, Sandy and Charles Westen, Cliff Wooldridge

ALL OF THE ABOVE PERSONS AND "BY-LINED"
CONTRIBUTORS ARE VOLUNTEERS. *NO ONE IS PAID*
FOR HIS OR HER SERVICE TO Main Street.

Printed on Recycled Paper
by Alton Printing Company
Average Circulation (2000) = 3,055

Advertising: 875-5397 Adv. Fax: 875-5399
Editorial: 875-5067 or E-mail: <mbejrjtl@worldpath.net>
Editorial Fax: By Prior Arrangement

Subscriptions are available to receive Main Street
by first-class mail @ \$6 for 6 issues, \$10.50 for 12.

© 2001 Voice of Alton

Now Offering
Complete Air Conditioning Service
N.H. Motorcycle Inspection



AUTO IMPORTS SERVICE

AUTO REPAIR-ALL IMPORTS & DOMESTICS, TOO
ROUTE 11 HC 73 BOX 532 ALTON BAY, NH 03810

- MAJOR & MINOR WORK
- ENGINE REBUILDING OUR SPECIALTY
- NH STATE INSPECTIONS
- DEPENDABLE SERVICE AT COMPETITIVE RATES

Monday - Saturday Over 28 Years Experience
Call for an Appointment Roger Bergeron, Owner

603-875-6148



FROM THE SUPERINTENDENT'S DESK
By Donald E. Parks
Superintendent of Schools

ALTON ON THE VERGE

Every civilization has had to undergo a catharsis in order to grow and prosper. Alton is on the verge of a catharsis. Over the years public forums have been held to get ideas on how to make Alton a better community. Last fall voters approved the purchase of a site to build a new school.

Bargaining between the Alton Teachers and the Alton School Board has been contentious for a number of years. What is gained for the community when there is bad blood and the voters are not willing to give the teachers a fair and equitable raise? The answer to the question is obvious. On March 13 the community will have an opportunity to approve a four-year contract between the district and the teachers that calls for a 2 percent increase each year with the teachers contributing \$38,000 annually toward the ever-increasing cost of health insurance premiums. This raise will keep the district's salary schedule at the average for the Lakes Region. It should allow the district to hire teachers and maintain existing staff.

The district and the community need some labor peace. Bargaining on an annual basis takes a lot of time and energy that could be best channeled in the direction of making Alton the best small school in the state. There is plenty of work to be done. Let's focus on the issues of building a new school, expanding our curriculum, and improving student achievement.

I am not going to insult your intelligence and tell you how to vote. I am asking you to weigh all of the information and vote your conscience. It is time to complete the catharsis and to continue to move in a positive direction. Continual rancor only destroys a society. The time is now. Vote on March 13 between 7 a.m. and 7 p.m.

The cost for a person with a house assessed at \$100,000 for the first two years of the contract will be \$46. To compute your tax, take the assessed value of your house, divide it by \$1,000 and then multiply that amount by 46 cents.

Formula to Calculate Tax Rate

Assessed Value @ \$100,000/1,000 = 100 x .46 = \$46.00

BUDGET COMMITTEE'S POSITION

Editors' note: Due to the advocacy of the above column and the fact that the Budget Committee did not recommend passage of Article XIV (teachers' salary package), the editors contacted the Budget Committee to see if they wished to present their position. This attempt by the editors was to give the voters as much information possible in order to facilitate informed decision-making. Their reply follows.

"If Main Street is going to publish a 'pro' on any budget issue, please publish [this] comment as our statement."

"Main Street has always been a community information publication and politically neutral. We wish it to stay that way. All Budget Committee meetings are open to the public and committee members are accessible by telephone."

SCHOOL CLOSED TODAY?

After a night of stormy weather there is only one way to find out if the kids have to be bundled up and put out the door to go to school. The *official* school closing announcements for Alton Central School are broadcast over radio stations WEVO (89.1FM), WKXL (1450AM & 102.3FM), WLKZ (104.9FM), WLNH (98.3FM), WNNH (99.1FM), WOKQ (97.5FM), and shown on WMUR-TV (Channel 9).



Main Street's Inside Front Page

SCHOOL BUILDING FORUM GETS RESULTS

By Wayne D. Fraser, Alton School Board

On Tuesday, February 3, the Building Committee of the Alton School Board held their first public forum to discuss the issue of a school building project with the community. The purpose of the forum was to hear input from members of the community as to what they perceived as the best way to proceed with the building project. The committee was anxious to have this input before proceeding to bring a proposal forward. Because this was a preliminary discussion, no cost estimates for any proposal were discussed.

Now that the committee has a beginning understanding of how the community feels about the project, the process of putting together a comprehensive plan to recommend to the School Board and the community can begin.

Several important issues, aside from the obvious need for more space, were discussed at some length. These included: How can the high school curriculum best be expanded, what type of facility would best accommodate community use other than just serving as a school, should an auditorium be included in the project, and should Alton be looking at building its own school or trying to work in conjunction with another town.

Also considered and discussed was the issue concerning for which grades the new facility should be built. Several options were offered, including dividing the grade levels into K-8 and high school or dividing into K-6 and 7-12. All of this provided for lively and informative discussion.

While some of these issues have already been considered, others will take some more time to deal with, and the committee looks forward to continuing their work. Ultimately our goal is to bring the best possible solution to the overcrowding problem forward for the voters' consideration.

Thank you to all who participated in the forum; your input is vital to the success of this project. Please be watching for an announcement of the next public forum and thank you for your continuing support of the Alton School District.

CATCH THE FORUM ON CHANNEL 25



If you missed the school building forum (above), or want to refresh your memory on what you said, you'll have a chance to check it out when it is replayed on the public access cable station LRPA-TV's Channel 25. The 1 hour 20 minute program will be shown on Friday, March 2, at 10 p.m., and then again on Saturday, March 3, at 12 a.m., 10 a.m., 2 p.m., and 10 p.m.

Those who do not have cable will be able to check out the video cassette from the Gilman Library about one week after the last showing on Channel 25.

HELP FOOD PANTRY AT TOWN MEETING

New to Town Meeting this year is that you are asked to remember your neighbor who might use the Alton Community Service Program, Alton's local food pantry, by bringing a donation of one or more items for them to distribute. Always welcome are cereal, can goods and toiletries. If you would like to donate but cannot attend the meeting, drop off your item(s) at the Selectmen's Office in Town Hall. Thank you.



NEW ADMINISTRATOR ON THE JOB

By Bob Longabaugh

Alton now has a former Vice President of a bank as the head of its town government operations. Pamela J. Arnold, recently in charge of the Bank of New Hampshire's Public Finance Division, made a significant career change when she started her new duties as Alton's Town Administrator on January 22.

Arnold, who prefers to be called Pam, is a New Hampshireite through and through. She started her schooling in Farmington and received her Bachelor's degree in management from the University of New Hampshire. Her employment experience is all in banking, beginning in Rochester and moving along in increasingly responsible positions ending in Concord. Her residence is in Milton where she is the Town Treasurer and a member of the Budget Committee. Additionally, she is the Treasurer of Strafford County.

Pam believes in volunteerism. Not only is she a trustee of the New Hampshire Farm Museum, but she puts in many unpaid hours there on weekends helping to make the museum user friendly to its visitors. "Everyone should volunteer according to their skills" she has said, quickly adding "I don't do house painting."

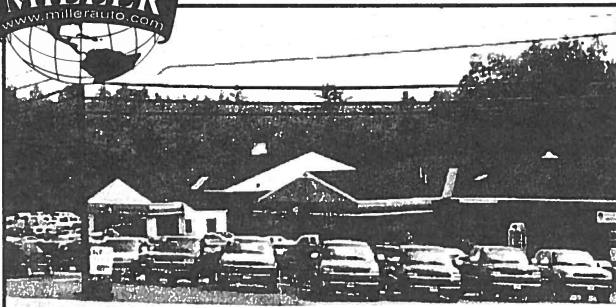
She has three grown children located in New Hampshire, Arkansas, and California with the two grandchildren being in Arkansas. Her hobby — when not volunteering — is flower gardening.

When asked about what she particularly wants to accomplish in Alton, Pam cites her extensive background in public finance and how that should help make the money part of town operations run smoothly. Most importantly she believes in fostering a friendly environment in Town Hall. She says that residents should look upon Town Hall as "being their house too."

**Over 300
Cars, Trucks, Vans
and SUV's in Stock!
See our selection on
Route 28 in
Wolfeboro or
E-SHOP-US
@millerauto.com**



*People & Cars
You Can Trust!*



Miller Auto Dealerships

A portion of this space could be used by your organization to promote its' activities. The Miller Auto Dealerships will purchase a half page ad every month in Main Street specifically for the purpose of promoting local charitable activities.

There is no charge to your organization!

Simply contact Sharon Severy at
The Miller Auto Dealerships

PO Box 730

Wolfeboro, NH 03894

or call

603-569-1068 or 1-800-287-1068

TOWN MEETING ON MARCH 14

By Pam Arnold, Town Administrator

The Selectmen invite you to participate in Town Meeting and we want to give you a brief outline of some of the articles upon which you will be voting. Part one of the Annual Town Meeting is the voting for town offices and other matters set by law to be on a written ballot. This vote will be held Tuesday, March 13, at the Central Fire Station on Route 140 from 7 a.m. to 7 p.m. Part two — the "traditional" Town Meeting — takes place the following night in the gymnasium of the Alton Central School starting at 7 p.m.

Turning to the agenda of the meeting, as always the largest article on the warrant is the town operating budget where the number is \$3,668,978 for the year 2001. This is exclusive of any funds for other warrant articles voted at the meeting. Such funds would be added to the above total.

FIRE DEPARTMENT articles: A four-year lease for a new ambulance for a total of \$185,659 (\$165,659 for the ambulance plus \$20,000 to equip the ambulance). The first year lease payment is \$70,000 plus the additional \$20,000 needed to equip it. This is offset entirely by revenue funds from the Ambulance Replacement and Equipment Special Reserve Fund. A ventilation system for the Fire Department at a cost of \$8,300; an addition of \$50,000 to the present Fire Department Equipment Capital Reserve Fund.

HIGHWAY DEPARTMENT articles: The purchase of a 1-ton Dump Truck at a cost of \$60,000; an addition of \$600,000 to the Highway Reconstruction Capital Reserve Fund previously established (the Town will receive Highway Block Grant funds in the amount of \$126,654 for a partial offset); an addition of \$10,000 to be placed in the present Bridge Replacement Capital Reserve Fund; an addition of \$50,000 to be placed in the present Highway Department Equipment Capital Reserve Fund; the Town share after grants (\$29,611) of funds to complete the Main Street sidewalk reconstruction project.

POLICE DEPARTMENT articles: \$24,000 for the purchase of a patrol vehicle; the purchase of a mobile video system at a cost of \$18,000; roof repairs needed for the police station at a cost of \$15,000.

PARKS AND RECREATION DEPARTMENT article: \$40,000 for a capital reserve fund to reconstruct the tennis courts at Liberty Tree Park.

SOLID WASTE CENTER article: Establish a capital reserve fund for equipment replacement in the amount of \$10,000.

WATER DEPARTMENT article: Establish a capital reserve fund for vehicle replacement in the amount of \$25,000. Water user fees would fund this.

OUTSIDE AGENCY articles include requests from the following: Alton Community Services Program, \$3,000; Community Action Program, \$6,736; VNA-Hospice of Southern Carroll County & Vicinity, Inc., \$10,941; Youth Services Bureau Court Diversion Program, \$12,000; Lakes Region Community Services Council, \$600; New Beginnings, \$1,300; American Red Cross, \$1,500; Community Health & Hospice, \$5,000; Lakes Region Planning Commission, \$5,169.

OTHER SIGNIFICANT ITEMS include \$50,000 for the "Benefit Pay Trust Capital Reserve Fund" recommended by the town auditors to cover accrued benefit obligations to town employees.

PETITION ARTICLES: A change in School and Church Streets to make them one-way. A second petition would authorize the Selectmen to sell Town owned land in Alton Bay to lessees.

50-DAY ADVENCHUR

By Bob Hett, Pastor, The Bay Church

"Seeing the Unseen Christ: How His Presence Transforms Life" is the theme of the 50-Day Spiritual Advenchur going on at The Bay (Advent Christian) Church from now through Easter Sunday, April 15. The congregation will be exploring how awareness of Jesus' presence transforms the way people live. We join thousands of congregations across North America in this Advenchur.

Created by Mainstay Church Resources in Wheaton, Illinois, the Advenchur is an annual all-church spiritual growth series, developed with the input of hundreds of pastors and laypeople across this continent, with over 400,000 Christians world-wide expected to participate this year.

During the Advenchur participants will be looking at eight ways lives are transformed when Christ's presence is made real. We should: 1) worship Him with genuine enthusiasm; 2) lavish His love on others; 3) embrace righteousness and renounce evil; 4) serve Him with gratitude and eagerness; 5) surrender to the truth of God's word; 6) experience the privilege of authentic prayer; 7) delight in introducing Him to others; and 8) celebrate God's gift of life at its best.

In addition to hearing weekly sermons on those themes, adults, teens, and children will be journaling daily. Assignments called "action steps" help apply scripture truths in practical ways. Some action steps are creating lighthouses of prayer in local neighborhoods, loving and serving others, and reversing self-destructive patterns.

I'm delighted our church can be a part of this exciting series. As representatives of God's family here in Alton, we want to make His presence known and show how that leads to the best life possible. You can join the Advenchur on

Sundays at 10:45 a.m. and 6 p.m. in the Moore Chapel or at the discussion following the Family Night ("Pot-Faith") Suppers held each Wednesday at 6 p.m. in the Lombard Center Dining Hall, both at the Alton Bay Christian Conference Center.

So, why do we keep insisting on spelling Advenchur (Camp Advenchur, Spiritual Advenchur) this way? Because we are a part of the Advent (Christian) Church. Thought you might like to know!

DONATIONS OF FOOD NEEDED

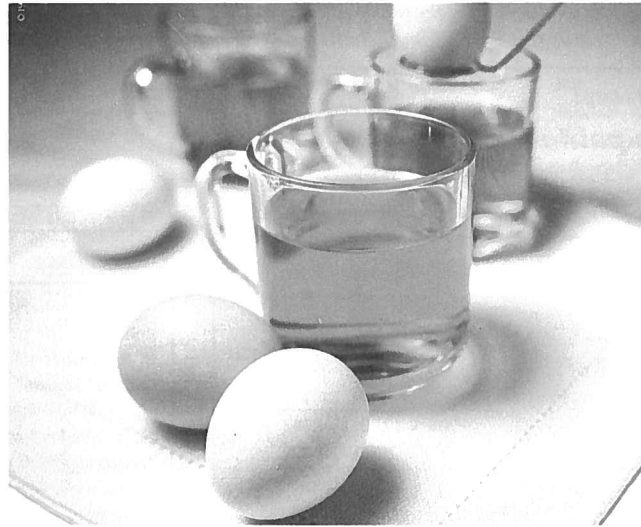
By Elizabeth Sweeney

The Alton Community Services Program (ACSP) completed the month of January having served 27 adults and 29 children in its food pantry. With several new families registering with the ACSP, we find ourselves in need of more fresh fruits, vegetables, and meats.

If you are able to stop by on Saturdays at 2 p.m. with a donation from your very recent shopping trip, we have many families that would greatly appreciate a carton of orange juice or a gallon of milk or even some fresh fruit or vegetables. If only ten families stopped in and donated just one or two fresh items, it would help us tremendously as we are not always able to purchase enough fresh items through our normal source.

As always, we appreciate any donations of canned goods or other packaged foods. Many of our families have a particularly difficult time during the winter and early spring months. We are extremely grateful to all of you who continue to support the Alton Community Services Program. Cash donations can be sent to the ACSP at P. O. Box 43, Alton, New Hampshire 03809 or call us at 875-2273.

Most people know Easter has something to do with dyeing.



Just a reminder that Jesus Christ rose from the dead, not a cup of food coloring. Experience the joy of his resurrection this Easter.

The Christian Churches of Alton
The Bay Church ~ The Community Church ~ St. Joan of Arc
(see Information Center for worship times)



CANDIDATES' STATEMENTS

When the candidates filed to run for office in the school and town elections, they were given a questionnaire and asked to return it to Main Street by a specified date. The form called for information on the candidate's background (training and/or experience) and a position statement — no more than 50 words — on "Why are you seeking this office?"

The information contained in the questionnaires that were returned by the deadline is reproduced below. When the candidate's position statement exceeded 50 words, in order to provide a level playing field, neutral editors reduced the statements to meet the specified maximum. Statements edited to meet the 50-word maximum are designated "condensed."

SELECTMAN - 3 YEARS

(Elect Two)

PETER J. PLJOAN (875-8894)

Background: Budget Committee; Cable Committee; Old Home Week Committee; Alton Chamber of Commerce.

Statement: I'm seeking the office of Selectman because I believe I can serve the town in this capacity in a completely unbiased manner with no agenda of my own except to serve the townspeople's desires, even though they may not be those of my own.

WILLIAM RYAN

Background: Resident since 1986; served on the ZBA and Planning Boards; Board of Selectmen 1997-2000.

Statement: (Condensed) There are two significant and interrelated issues facing Alton. The first is education. The second is our status as a donor community. As Selectman I will fight to see the state-wide property tax is scrapped thereby enabling voters to make their own decisions when it comes to education.

JAMES WASHBURN (364-7413)

Background: Selectman for last three years.

Statement: Actions we take now will effect us 5, 10, or 20 years in the future; thought must go into decisions that are made. I would like to continue to serve the town in the future as I have in the past. Thank you.

TRUSTEE OF TRUST FUNDS - 3 YEARS

(Elect One)

JOSEPH R. HOULE

Questionnaire not received by press time.

LIBRARY TRUSTEE - 3 YEARS

(Elect One)

C. EUGENE "GENE" ROGERS

Background: USAF Military Police; Alton Chief of Police; Belknap County Sheriff's Department; County Investigator, Prosecutor, Polygraph Examiner; Currently at Blake Equipment Company; Committees - Highway Safety, Parks and Playground, Alton School Building, Budget; Community Church; former baseball and basketball coach; NH Police Association.

Statement: (Condensed) I believe my experience on the budget committee and my knowledge of purchasing and planning would be an asset to the library. I would very much enjoy the opportunity to serve the people of Alton on the Gilman Library Board of Trustees. I would appreciate your consideration on election day.

FIRE WARD - 3 YEARS

(Elect One)

STANLEY E. CZECH

Questionnaire not received by press time.

Paying too much for heating fuel?



OTEC has Discounts on: Heating Oil Propane Kero & Diesel Telephone Insurance

Call today
603-776-2488
1-800-801-4177



Beat OPEC with OTEC!



Our Town Energy Choice, OTEC

OTEC is a non-profit organization founded to help consumers get relief on rising home heating bills. We began with 75 members and 100,000 gallons of fuel. Now, in our third season, we have 1100+ members and over 2.2 million gallons. *With this volume we get great discounts.* Depending on the option you choose, you save 20%-30% all year. *Our members tell us the savings on their first delivery alone is more than double the cost of membership!*

Oil Prices:

If you paid more than \$1.09 per gallon, you're paying too much for oil.



Propane Price Comparison

OTEC PRICES 2000-2001	
UNDER 150 - \$1.62	700 - 1200 - \$1.07
150 TO 699 - \$1.40	1201 - 2000 - \$1.04
CURRENT MARKET PRICES-FEB. 2001	
UNDER 150 - \$2.30+	700 - 1200 - \$1.83
150 TO 699 - \$1.98	1201 - 2000 - \$1.78

Why Join?

Ben Franklin said "E Pluribus Unum" or "From Many, One"... and put it on the dollar bill. When consumers band together, the result is purchasing power and influence.

☆ *Alton has 180 OTEC members to date* ☆

Telephone Rates Comparison

One Star Communications offers In-State rates of 9.34¢ and 6.9¢ Out-of-State/per minute/6 second billing. This is a 56% savings over Union Telephone Company.

BUSINESSES: as low as 7.6¢ InState & 4.7¢ Out-State

Insurance - Home & Auto

OTEC members can save about 10% on Home & Auto policies. The program was state approved 2/2/01. Our first member said: *"I just want to let you know that the auto rates are fantastic. With OTEC we saved over \$668 from the group rate we enjoyed with AAA and over \$400 from the GEICO quote. I really did not expect such substantial savings. Thank you for all your hard work in securing these rates. We believe we have probably saved near \$800. - \$900. This year alone by taking advantage of OTEC products."*

Luke Powell, Gilmanton, NH

☆ *Sign up by mail, phone or on the web* ☆
1080 N. Barnstead Rd. Ctr Barnstead, NH 03225
603-776-2488

Check out our website [http:// www.ourtownenergychoice.org](http://www.ourtownenergychoice.org)

Deadline March 31, 2001 for next year's lowest heating prices.



JOHN H. SCOTT (875-2425)

Background: I have been an active member of the fire service for over 35 years, having served as a fire fighter, first responder, EMT, fire officer, and a 12-year term as a Chief. I held the position of Emergency Management Director for a town of 12,000.

Statement: Because I believe the Fire Department should maintain a high level of service and be fiscally responsible to the town, I feel my background would serve the citizens of Alton well.

CEMETERY TRUSTEE - 3 YEARS

(Elect One)

MARKS, DIVITO

Questionnaire not received by press time.

WATER COMMISSIONER - 3 YEARS

(Elect One)

REUBEN L. WENTWORTH

Questionnaire not received by press time.

WATER COMMISSIONER - 2 YEARS

(Elect One)

CARL "LEE" CIAMPO

Questionnaire not received by press time.

EDWARD "BUDDY" PETERSON (875-2110)

Background: I have business experience; also good with budgets and relating to the public.

Statement: (Condensed) As a resident and owner of the Dockside Restaurant, I seek this office because I feel I have the experience. I have lived in Alton for 13 plus years, am a large water user, and would like to work with the employees whom I know in the town I live.

BUDGET COMMITTEE - 3 YEARS

(Elect 3)

No candidates listed on ballot. *Write-ins will decide this office.***BUDGET COMMITTEE - 2 YEARS**

(Elect 1)

FRANCES WASHBURN

Questionnaire not received by press time.

BUDGET COMMITTEE - 1 YEAR

(Elect 1)

SHELBY H. HUSAK

Background: Interior design consultant responsible for creating 3D space planning, overall design concept; project management, hiring, as well as maintaining preset budget parameters on both residential and commercial projects.

Statement: As a parent, business owner, and resident of Alton, I will bring more balance to the Budget Committee. Controlled spending and taxes are needed but not at the cost of stifling our children's education and our town's ability to prosper.

PLANNING BOARD - 3 YEARS

(Elect 2)

ROBERT G. EDDY

Questionnaire not received by press time.

THOMAS C. HOOPES (875-3400)

Background: Middlebury College, BA, Geography and 3 years graduate work; 18 years Alton Fire Department; 15 years Cemetery Trustee; 19 years Conservation Commission; 3 years Alton Budget Committee.

Statement: I am interested in working toward a Planning Board that spends more time in planning and less in reacting.

PLANNING BOARD - 2 YEARS

(Elect 1)

EARL J. BAGLEY

Background: I have been an Alton business owner for 11 years, served on the Planning Board as an alternate for 5 years, and been appointed to fill two board vacancies.

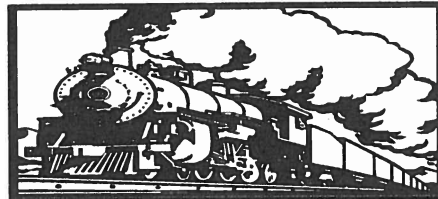
Statement: The current Zoning Ordinance needs critical changes now to protect our citizens and businesses and to preserve the special character of Alton. I believe my past experience and sincere interest would prove helpful in this process.

MARCELLA PERRY

Questionnaire not received by press time.

Continued on page 8

NEW DURHAM RAILWAY STATION



SERVING LUNCH AND DINNER

7 DAYS EVERY WEEK

ITALIAN AMERICAN SEAFOOD

TRY OUR NEW MENU

TAKE OUT MENU = 1-603-859-5696

ENTERTAINMENT SCHEDULE - MARCH 2001 (8:30PM-1:00AM)

LYDIA WARREN BAND

MARCH 2ND & 3RD

JONATHAN WEBSTER BAND

MARCH 9TH & 10TH

DAVE BERRY BAND

MARCH 16TH

JONATHAN WEBSTER BAND W/

OPENING ACT DAVE BERRY

MARCH 17TH

RON JONES BAND

MARCH 23RD & 24TH

COUPE DEVILLE BAND

MARCH 30TH & 31ST

CALL FOR AVAILABILITY 1-603-859-5696 ASK FOR PATTI

COME SEE OUR NEW TAVERN

FROM ALTON ROTARY 2 MILES SOUTH ON RT 11

**ALTON
VILLAGE 5 & 10
ACE HARDWARE
(603) 875-5510**

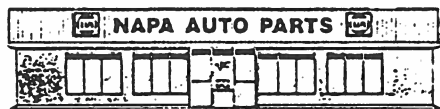
COPIES & FAX SERVICE Available Here ~ Fax 603-875-5525

**MARCH IS
NATIONAL CRAFTS MONTH!**
*Sweeten Your Projects
With Our Specials!
Selected Crafts Supplies 50% Off*

Fabric 25% Off

DMC FLOSS 4/\$1.00

AMERICANA PAINTS - \$.99
TACKY GLUE - \$.99
SUGAR N' CREAM YARN- \$1.19



NAPA AUTO PARTS - FARMINGTON

WE CARRY A FULL LINE
OF AUTO PARTS & ACCESSORIES
INCLUDING...



- Parts for Imports
- Parts for Trucks
- Paint & Supplies
- Brand Names You Rely On



ASK ABOUT NAPA'S NATIONAL WARRANTY PROGRAM

NAPA AUTO PARTS

Route 11 - Farmington
755-2264 • 800-734-2269
Mon-Fri 6 am to 5:30 pm
Sat 6 am to 5 pm • Sun 9 am to 1 pm

Continued from page 7

THOMAS W. VARNEY (875-7110)

Background: 25 years local work experience in Alton as a civil engineer.

Statement: Alton may likely see a large increase in subdivisions and development in the next ten years. I can provide a level of expertise to the Planning Board in dealing with this growth.

SUPERVISORS OF THE CHECKLIST - 5 YEARS

(To fulfill a 6-year term)

(Elect 1)

ANNA D. GRIFFIN (859-8558)

Background: Resident of Alton for 3 years; member of Alton Budget Committee 2 years; presently a member of the Supervisors, having been appointed by the two other members.

Statement: I worked in three elections in 2000; I have been helping update the computerized voter registry to get the town voter rolls ready for the state-mandated ten-year purge due in 2001.

SCHOOL BOARD MEMBER - 3 YEARS

(Elect 2)

RORIM BOYCE

Questionnaire not received by press time.

PETER FARRELL (875-7626)

Background: Resident of Alton since 1980; 3 daughters enrolled in Alton school; currently serving on School Board by appointment since May; forester and consultant in Lakes Region for 22 years; part owner/treasurer of New England Forestry Consultants; Graduate of Franklin & Marshall and Duke University School of Forestry.

Statement: (Condensed) I strongly believe we have an obligation to support public education for all children, providing the basics to all and opportunities for the motivated to excel. Having served on the School Board for the last eight months has been a valuable experience; I would like to continue in this position.

SCHOOL MODERATOR - 1 YEAR

(Elect One)

TERRINOYES

Questionnaire not received by press time.

SCHOOL TREASURER - 1 YEAR

(Elect One)

SHIRLEY E. YOUNG (875-7530)

Background: Have been elected to this position since 1972.

Statement: Live and work in Alton Bay so am able to get to SAU office or school on short notice. Thanks to all who supported me in the past and would appreciate your vote again.

SCHOOL CLERK - 1 YEAR

(Elect One)

RUTH A MESSIER (875-6750)

Background: Professional secretarial experience; secretary of Budget Committee.

Statement: I have served in this position this past year and have made every effort to learn the requirements necessary to fill the position. I would like to continue and would appreciate your vote on March 13. Thank you.

NEW OPTIONS FOR OTEC MEMBERS

The members of Our Town Energy Choice (OTEC) who currently are saving money on fuel and long-distance phone service will now have a chance at group discounted home and auto insurance. If anyone is interested in this type of program, call 776-2488. Also, be aware that the bid goes out for next year's fuel in April.



WARM UP YOUR HOME WITH ... K-1 KERO MOBILE BLEND
OILS
HOME HEATING OIL
HEATING SYSTEMS INSTALLED

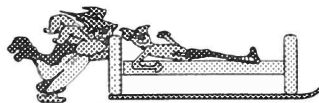
**CARDINAL AND
GLIDDEN OIL CO. INC.**

CROWLEY ST., FARMINGTON
MALCOLM GLIDDEN, PRESIDENT CHRISTOPHER GLIDDEN, VICE PRESIDENT
RICHARD CHRISTOFORE, TREASURER

DELIVERIES IN ALTON
Also in FARMINGTON - UNION - MIDDLETON
MILTON - SANBORNVILLE - MILTON MILLS
NEW DURHAM - ROCHESTER

24-HOUR BURNER SERVICE
FOR OUR CUSTOMERS ONLY

755-3562
1-800-640-3562



INDIANA EXPRESS DOES IT AGAIN!

By Kellie Troendle, Recreation Director

The Annual Winter Festival sponsored by the Alton Parks and Recreation Department was held on Sunday, February 18, at the Alton Bay Bandstand on Lake Winnepesaukee. The beautiful sunny weather made for increased attendance and active participation in the many events. Activities included the Mt. Major Snowmobile Club Radar Run, Lions Club Mini-Golf, Fly In, D.J. Music from Top 40 Productions, Scavenger Hunt, and the Great Alton Bay Bed Race.

Results from the Family Scavenger Hunt: 1st place the Alton Bay Christian Conference Center Team; 2nd place the Dow Family, and 3rd place the Gleason Family. There were over 40 participants in the Scavenger Hunt.

The Alton Bay Bed Race Winners for the third year in a row were the Indiana Express team made up of the McKain family from Massachusetts, winning five tubing passes donated by the Gunstock Ski Area. The Indiana Express Team outran opponents Woodcrest who were the 1998 winners. Thank you participants for a great race.

The Alton Parks and Recreation Department would like to thank the many participants and organizations for being a part of the 10th Annual Winter Festival. A special thank you to Gunstock Ski Area for donating tubing passes and Keith Waterman, Kerri Furtado, Harry Waterman, Bill Watson, Carsten Schanche and the Lions Club volunteers for their assistance with the Winter Festival Events. See you again next year.

PLANNING BOARD SETS GOALS

By Alan Sherwood, Planning Board Chair

On January 22 the Alton Town Planning Board held a work session to identify goals and objectives for the next two years.

The Board identified the top priorities as:

1. Update of Subdivision/Site Review regulations, which were written in 1968 and last updated in 1991. These old regulations are not consistent with current law and include almost no tools to assist the Board in dealing with large complex applications.

2. Prepare a road impact fee ordinance and update the transportation section of the Master Plan. In 2000 about \$100,000 was placed in escrow accounts by subdivision applicants for upgrade of town roads in the immediate vicinity of approved subdivisions. During 2000 the Highway Agent withdrew \$70,892 from escrow accounts established in prior years for upgrade of three town roads. A recent NH Supreme Court decision has changed this. Now an impact fee ordinance will be required in order for the Planning Board to continue with the practice of assessing road impact fees for most off-site improvements necessitated by new subdivisions.

3. A complete zoning overhaul to include: Reorganization to make the ordinance user friendly; reconsider rural zone lot size and permitted uses; and consideration of steep slope and soil-based lot sizing.

Other items discussed, but not prioritized, were Alton Village revitalization including connections to Alton Bay such as a bike path; wetlands protection; an industrial park zone; and new tax maps of uniform scale.

The Board also considered membership in the Lakes Region Planning Commission (LRPC) with the consensus being that Alton should join the LRPC. Among other benefits Alton would have direct participation in formulating the NH DOT Transportation Improvement Program for our region, including nominating projects and setting the priorities.

MAIN STREET CAFÉ
RTE. 11, MAIN ST., ALTON 875-4745

OPEN YEAR ROUND

SERVING BREAKFAST, LUNCH AND DINNER

WINTER HOURS OF OPERATION:

MON.-WED., FRI. & SAT. 7:00 - 2:00 (closed Thursday)
FRI. & SAT. 4:30 - 7:30 (DINNER)
SUNDAY 7:00 - 1:00

****DAILY LUNCH SPECIALS****

M-W, FRI BREAKFAST SPECIAL

2 EGGS, HOMEFRIES, TOAST AND COFFEE \$2.00
"THE BEST DEAL IN TOWN"

COME TRY OUR NEW LUNCH AND DINNER MENU
LOADED WITH NEW MENU ITEMS
FOR EVERYONES TASTE BUDS

YOUR HOSTS CHEF TOM AND KAREN JEFFREY

Alton Circle Grocery

875-2861

Formerly Wayside Grocery

Is NOW a Family Member
of the Stafford Oil Co.

We Still Have The Best In



Chili

Vegetables

Subs

Meats

Fried Chicken

Live Bait

Groceries

Fishing Tackle

Ice Cream

Auto Supplies

Fresh Baked Breads

CITGO Gasoline

Pies & Rolls

and Motor Oil

Pastries





Main Street's

March

S	M	T	W	T	F	S
				1	2	3
4	5	6	7	8	9	10
11	12	13	14	15	16	17
18	19	20	21	22	23	24
25	26	27	28	29	30	31

MARCH EVENTS

- Sat. 3 REGISTER TO VOTE FOR 3/13 and 3/14, Supervisors of Checklist Meet, Town Hall, 11 a.m. - 12 noon
- Tue. 6 CANDIDATES' NIGHT, Alton Central School, 7 p.m., see story
- Wed. 7 BINGO, American Legion Hall, 6:30 p.m.
- Thu. 8 - BLOOD PRESSURE CLINIC, Pearson Road Community Center, 10:30 a.m. - 12 noon
- Mon. 12 YOUTH ART MONTH, ACS Student Artwork, Town Hall, runs until March 30, see story
BOOK DISCUSSION GROUP, Gilman Library, 6:30 p.m., see "Checkout"
- Tue. 13 TOWN AND SCHOOL DISTRICT BALLOT VOTE, Alton Central Fire Station, 7 a.m. - 7 p.m., see story
- Wed. 14 CHRISTIAN WOMEN'S LUNCH, Conference Center, 11:30 a.m., see story
SENIOR CLASS SPAGHETTI SUPPER, see story
BINGO, American Legion Hall, 6:30 p.m.
TOWN MEETING, Alton Central School, 7 p.m.
- Fri. 16 DANCE FOR GRADES 6 - 8, Alton Central School Cafeteria, 6:30 - 9 p.m.
- Sat. 17 ST. PATRICK'S DAY
- Tue. 20 VERNAL EQUINOX, 8:31 a.m., EST - Spring is Here!
ALTON ENRICHMENT PROGRAM, Alton Central School Library, 7 p.m., see story
- Wed. 21 BINGO, American Legion Hall, 6:30 p.m.
- Thu. 22 FREE STRESS LECTURE, Gilman Library, 7 p.m., Part 2
March 29, see story
- Fri. 23 BAND CONCERT, "Recycled Percussion," Alton Central School Gym, 4 - 8 p.m., call for more information
- Sat. 24 SPAGHETTI DINNER, Alton Police Association, see "To Protect and Serve"
- Wed. 28 BINGO, American Legion Hall, 6:30 p.m.
- Thu. 29 ASSEMBLE Main Street, Pearson Road Community Center, 6:30 p.m.

TO LIST YOUR EVENT SUBMIT WRITTEN INFORMATION TO:
(1) P. O. Box 210, Alton Bay, 03810 or (2) Bank of New Hampshire (Main Street box). **Be sure to include a phone number.**

ACTIVE PARENTING SERIES

On Mondays the popular Active Parenting Series will be offered at Alton Central School. The six-week series has been developed to aid in the difficult task of raising children. Issues to be covered are: discipline methods that work, the three keys to your child's self-esteem, how to avoid anger, communications skills that win cooperation, teaching responsibility, and how to teach your child to respect you.

Molly Connelly, M.Ed., will lead the series on the Monday nights beginning on March 12 from 6:30 - 8:30 p.m. There is no charge for the program, it is open to all parents, and free childcare is provided. Pre-registration is required so call 875-7500 to sign up.

OF SPECIAL NOTE . . .

SCHOOL AGE ENRICHMENT PROGRAM

The Planning Committee for the Alton Enrichment Program will meet Tuesday, March 20, at 7 p.m. in the Alton Central School Library.

The group will discuss options for the administration and direction for the proposed program. All concerned/interested parents and citizens are invited to attend and participate. If you have questions, call Brian Lynch, 798-5850.

ELECTION INFORMATION

By Lisa Waterman, Town Clerk

Mark your calendar for Tuesday, March 13. The Town and School District elections will be held that day at the Alton Central Fire Station on Route 140 between 7 a.m. and 7 p.m. Absentee ballot applications for both elections are available at the Town Clerk's Office. An application must be completed by a registered voter before a ballot can be handed out or mailed to the applicant. The Town Clerk's Office will be open until 5 p.m. on Monday, March 12 to accept any absentee ballots. On election day the absentee ballots will be accepted by **mail only**.

If you are not an Alton registered voter, you can become one at the polls on election day with the Supervisors of the Checklist. A photo ID along with two forms of identification with a physical address (not a P. O. Box) is required to fill out a voter registration card. You can also register until March 2 at the Town Clerk's Office or with the Supervisors of the Checklist on Saturday, March 3 between the hours of 11 a.m. and 12 noon at Town Hall.

Tables are still available for community organizations who wish to sell products, raffle tickets, etc. on a first-come, first-served basis. Contact the Town Clerk's Office at 875-2101 if you wish to reserve space. Our hours are 8:30 a.m. - 4:30 p.m., Monday through Friday.

"SB2" ON SCHOOL BALLOT

When voters go to the polls on March 13 to determine other school matters, they will once again be presented with the choice of which type of school balloting they will use in the future. Since 1998 the school district has been using the method which has become known as "SB2." Under this method the school district's annual meeting is held in two parts. The first part, the "deliberative session," allows all registered voters to speak and the meeting decides the exact wording of the articles that will appear on the later written ballot. Part two occurs on the town's election day where voters enter the voting booth to mark "yes" or "no" (or nothing) on a paper ballot containing the articles as decided at the deliberative session.

By petition Article X is on the March 13 school ballot. Its wording: "Shall we rescind the provisions of RSA 40:13 (known as SB2) as adopted by the Alton School District on March 11, 1997, so that the official ballot will no longer be used for voting on all questions, but only for the election of officers and certain other questions for which the official ballot is required by state law?"

If 3/5ths of those voting mark "yes," the district will return to the former "town meeting" format where all questions are debated and decided on the floor among the registered voters in attendance that day.

Information Center

SCHEDULES

CHURCHES:

- Baha'i Fireside — Thu., 7:30 p.m., Holway Residence, Old New Durham Road
- Bay Church — Sun. School, 9:30 a.m.; Woship Services 10:45 a.m. and 6 p.m., Moore Chapel of the Alton Bay Christian Conference Center; Wed. night Family Supper, 6 p.m. and Fellowship Groups, 7 p.m., Lombard Center Dining Hall; Rev. Robert H. Hett, Pastor, Rev. John Fogell, Assoc. Pastor
- Community Church — Sun. School, 9:30 a.m.; Sun. Services, 8:30 and 11 a.m., Congregational Meeting House, Church Street; Wed. Kids Club, 3 p.m.; Thu. Bible Study (Baptist Meeting House, Main Street), 7 p.m.; Rev. Peter Bolster, Pastor
- First Free Will Baptist Church — Sun. School, 9:45 a.m.; Church, 11 a.m.; Evening Service, 6 p.m.; Wed. Prayer Meeting, 7 p.m.; Depot St., New Durham; Pastor James Nason
- St. Joan of Arc — Weekend Masses at Baptist Meeting House, Main Street, Sat., 4 p.m. and Sun., 8:30 a.m.; CCD (Sun. School) 9:30 a.m.; Weekday Masses in Parish Hall; Mon. - Sat., except Wed., 8 a.m., with Rosary before at 7:30 a.m.; Confessions, Sat., 4 p.m. or by appointment; Fr. Richard Wegman, Pastor. Sun. Mass St. Paul's in Barnstead, 10 a.m.
- Wolfeboro Bible Fellowship — Sunday School, 9:30 a.m.; Worship Service, 10:30 a.m.; Evening Service, 6 p.m.; Wed. Prayer Meeting, 7 p.m.; Route 28; Pastor Scott Button

GILMAN LIBRARY: 875-2550

Mon. and Wed., 11 a.m. - 7 p.m.; Tue. and Fri., 9 a.m. - 5 p.m.; Sat., 9 a.m. - 1 p.m.; closed Thu. and Sun.

SENIOR MEAL SITE: 875-7102

Mon - Fri., 10 a.m. - 2 p.m.; Pearson Rd. Community Center

SOLID WASTE CENTER: 875-5801

Sun., Mon., Fri., and Sat., 7 a.m. - 4:45 p.m.
Closed Tue., Wed., and Thu.

Rines Road Pit — Closed for season

TOWN HALL: 875-2161

Selectmen's Office, Tax Collector, Town Administrator, Town Clerk, and Welfare Officer, 8:30 a.m. - 4:30 p.m.
Building Inspector — 875-5095 for hours and appts.
Parks and Recreation — 875-0109 for info and appts.
Planning Director — 875-5095 for hours and appts.

ORGANIZATIONS:

Alcoholics Anonymous — Tue., 8 p.m., Alton Bay Community Center

American Legion — 2nd Mon., 7 p.m., Legion Hall

American Legion Auxiliary — 2nd Mon., 7 p.m., Legion Hall

American Legion Jr. Auxiliary — 1st Tue., 6 p.m., Legion Hall

Boy Scout Troop 53 — Wed., 6 p.m., Central Fire Station

Community Services Program, Sat., 2 - 4 p.m., 875-2273

Cub Scout Pack 53 — Last Tue., 6:30 p.m., Legion Hall

Eastern Star — 2nd Tue., when meeting, 875-5211

Flying Club — 2nd Wed., 6:30 p.m., 859-7900

Friends of the Gilman Library — 2nd Tue. (in season), Library

Garden Club — 4th Tue. (in season), Congregational Mtg. House

Happy Hobby Doll Club — 4th Fri., 7 p.m., Pearson Road

Community Center

Historical Society — Watch for announcements of programs, Apr. - Oct.; Nov. - Mar., Museum open by request, 569-2629

Knights of Columbus — 1st Wed., 7:30 p.m., Pearson Road Community Center

Lions Club — 1st and 3rd Thu., Foxy Johnnie's Restaurant, New Durham, 6:30 p.m.

Masonic Lodge — 2nd Thu., when meeting, 875-7448

Moms In Touch — Mon., 8:30 a.m., 875-2866

P.T.S.A. — 3rd Wed., Alton Central School Library, 7 p.m.

Senior Citizens — 2nd Wed., 1 p.m., Pearson Road

Community Center

VFW — 3rd Mon., 7:30 p.m., Pearson Road Community Center

CALL 875-5067 TO UPDATE THE ABOVE LISTINGS

BOARDS AND COMMITTEES

- BOARD OF SELECTMEN — 1st & 3rd Mondays, 6 p.m., 5th Monday, varies, Chairman James C. Washburn, call 875-2161 for appointment.
- BUDGET COMMITTEE — 3rd Thursday (twice a week in "budget season"), 7 p.m., Chairman Virginia Bergeron, 875-6714
- CEMETERY TRUSTEES — Meetings posted at Town Hall and Post Office, Chairman Shirley Lane, 875-5864.*
- CONSERVATION COMMISSION — 2nd & 4th Thursdays, 7 p.m., Town Hall, Chairman Lisa Erickson-Harris, 364-6388.
- FIRE WARDS — 3rd Wednesday, 6:30 p.m., Central Fire Station, Chairman Richard Quindley, 875-2910
- GILMAN MUSEUM COMMITTEE — Meets on call, Chairman Bill Crocker, 875-2161.
- LAND CONSERVATION INVESTMENT PROGRAM — Meets on call, Chairman Juliet Peverley, 875-7232.
- LEVEY PARK TRUSTEES — Meet on call, Chairman Dick Jones, 875-3855.
- PARKS AND RECREATION COMMISSION — Meets on call, Chairman William Lionetta, 875-0109.
- PLANNING BOARD — 2nd Monday, 7 p.m., Chairman Alan Sherwood; call 875-5095 for appointment.
- SCHOOL BOARD — 2nd & 4th Mondays, 6 p.m., Chairman Joyce Hopper, 776-8733
- SUPERVISORS OF THE CHECKLIST — Meets on call, Chairman MaryBee Longabaugh, 875-5067.
- TRUSTEES OF THE GILMAN LIBRARY — 3rd Monday, 3:45 p.m., Chairman David Countway, 875-2550.
- TRUSTEES OF TRUST FUNDS — Meets on call, Chairman Joseph R. Houle, 875-7321.
- WATER COMMISSION — 2nd & 4th Thursday, 8:30 a.m., Water Department Office, Chairman Reuben L. Wentworth, 875-4200
- ZONING BOARD OF ADJUSTMENT — 1st Thursday, 7 p.m., Chairman Fran Washburn, 875-5095.

*DENOTES A CHANGE OF INFORMATION
CALL 875-5067 TO UPDATE THE ABOVE LISTINGS

OUR ELECTED OFFICIALS

U.S. SENATE

Robert C. Smith, 307 Dirksen Senate Office Building, Washington DC 20510-2903; Phones: (800) 922-2230, (202) 224-2841, Fax: (202) 224-1353; e-mail: opinion@smith.senate.gov

Judd Gregg, 393 Russell Senate Office Building, Washington DC 20510-2904; Phones (202) 224-3324, (603) 225-7115, Fax (202) 224-4952; e-mail: mailbox@gregg.senate.gov

U.S. HOUSE OF REPRESENTATIVES

John E. Sununu, 1229 Longworth House Office Building, Washington DC 20515; Phones (202) 225-5456, (603) 641-9536, Fax (202) 225-5822; e-mail: Rep.Sununu@mail.house.gov

N.H. EXECUTIVE COUNCIL

Ray Burton, 271-3632 (Concord), 747-3662 (Woodsville)

N.H. SENATE

Robert Boyce, 875-7371, E-mail: rboyce@worldpath.net

N.H. HOUSE OF REPRESENTATIVES

Gordon Bartlett, 524-1220 (w), 524-6536 (h)

Laurie Boyce, 875-7371, E-mail: lboyce@worldpath.net

Stanley Czech, 875-3815, E-mail: sdzech@worldpath.net

Dave Russell, 364-7449, Fax: 7448, E-mail: russells@worldpath.net

BELKNAP COUNTY COMMISSIONER

Christopher D. Boothby, 527-5400

BOARD OF SELECTMEN

James C. Washburn, Chairman, 364-7413

Harold M. Bothwick, Jr., 875-6262

Stephan McMahon, 875-6322

Arnold ("Pete") Shibley, 875-2849

Reuben Wentworth, 875-3388

MOVIE MANIA

ALTON'S FULL TIME VIDEO STORE
OPEN 7 DAYS

NEW FOR MARCH

Dancer In The Dark	Lucky Numbers
The Contender	Remember The Titans
The Little Vampire	The Tao Of Steve
Meet The Parents	Charlie's Angels
The 6th Day	Rugrats In Paris
The Crew	Winning London
Legend Of Drunken Master	Red Planet

DVD - N64 - PLAYSTATION

Movie Mania ~ Alton
Main Street (Next to Village Pizza)
CALL FOR RESERVATIONS 875-0027

PERSONAL INJURY MEDICAL MALPRACTICE GENERAL LITIGATION
BUSINESS LITIGATION ACCIDENTS

EXPERIENCED TRIAL LAWYERS
LAW OFFICES OF PAUL M. MONZIONE
(FORMER PARTNER OF MELVIN M. BELLI)

NO FEE for initial phone or office consultation
or unless a recovery is obtained

* Day, Evening, Weekend Appointments Available *

PORTSMOUTH OFFICE ALTON HOME OFFICE
603-334-9800 603-859-6555

Offices in NH, MA, CA with Affiliate Offices throughout US

Barbara's Little Beauty Shop



Family Hair Care
Senior Citizen Discounts
OPEN TUES. - FRI.

N. Barnstead Rd.
Ctr. Barnstead, NH

776-3920
Barbara Elliott

HEARING AIDS

Robert I. Williams
BC-HIS

HIGHEST QUALITY
BEST PRICES
FAST SERVICE

1-800-538-4064

EXPERT SERVICE
ALL MAKES

Offering
Starkey's PFS - 6000
Computer testing & fitting
system. Improving accuracy
and comfort in Hearing
Correction. Digitally
Programmable Sequel®
Available

HALL'S
PHARMACY
10-1 Mondays
Wolfeboro 569-2374

WILLIAMS BLDG
By Appointment
Rt. 11 Alton
875-6059

CARNEY DRUG
10-1 Wednesdays
Rochester
332-2132

FREE HOME VISITS - FREE HEARING TESTS

ACS ANNOUNCES ART WINNERS

By Joan Burns, ACS Art Teacher

The Alton Central School (ACS) has received word that the following students won awards in the 2001 New Hampshire Scholastic Art Competition:

Katie Morrill, Grade 12: Gold Key Award (oil painting), Silver Key Award (mixed media), and an Honorable Mention (sculpture).

Emily Sydow, Grade 12: Honorable Mention (sculpture).

Dana Lang, Grade 11: Silver Key Award (watercolor painting), and an Honorable Mention (mixed media).

Sarah Belanger, Grade 10: Silver Key Award (sculpture).

The Scholastic Art Competition is a prestigious and highly respected national contest for student artists in grades 7 to 12. Gold Key artworks are sent to New York for national judging. Winning artworks from this competition are placed on exhibit in Washington D.C.

ACS GEOGRAPHY BEE

By Josh Leidtke

The Geography Bee is all about promoting Geography and Social Studies in a fun and challenging way. Alton Central School (ACS) Seventh Grader and now Schoolwide Geography Bee Champion, Bryan Enis, had a tremendous victory on January 12. He stated, "I really studied to get ready, and it felt pretty good to win." Bryan has taken the qualifying test to compete at the State Geography Bee on April 6. Bryan is eagerly waiting to hear about the competition. The winners of the State Geography Bee go on to the National Bee and possibly win thousands of dollars in college scholarship money.

Congratulations to Caila Kantar, runner-up, and good luck to Bryan.

MATH STUDENTS LEARN ABOUT BANKING

By Than Chase, ACS Math Teacher

The students in the Alton Central School (ACS) High School Math Department recently ventured forth into the world of high finance. On February 2 a guest speaker from the Bank of New Hampshire taught them "a little" about banking. Ms. Christine Harris, the new branch manager in Alton, spoke to the students in the Applied Math class on checking accounts, as well as register and record keeping. Ms. Cydney Shapleigh-Johnson, Investment Representative, explained the value of investment planning. The students discussed certificates of deposits, stocks, and securities. Scholarship programs sponsored by the bank were distributed to the class. There are more applications available in the guidance office for those interested.

ACS's SPRING LITERACY FESTIVAL

By Barbara Weatherbee, ACS Reading Director

Alton Central School (ACS), as well as all of New Hampshire's schools, will celebrate the 12th annual Spring Literacy Festival to coincide with the first day of spring. On March 20 ALL members of the school community will be reading at 9 a.m. for as long as appropriate for each level.

The week of spring holds many school-wide and classroom activities. Just a few activities include "Read Your Shirt Day" in which students will wear a shirt with words on it, "Reading Marathons," "Poem In Your Pocket Day," "Read With Another Class," and "guest readers" who will read to students.

We eagerly anticipate spring's arrival and reading celebration! Be our guest and join us at ACS for a fun-filled week!

FREE STRESS LECTURES

By Richard and Carol Wallace, Health Educators

In today's society STRESS is acknowledged to be a problem for most people. Stress can have an adverse effect on your attitude, relationships, and health. At these two free lectures we will discuss the following: causes and effects of stress; relationship of stress to your health; techniques to help you manage stress.

We will discuss ways you can manage your time AND recover this priceless gift. Audience participation will be encouraged. These lectures will be held at the Gilman Library from 7 - 8:30 p.m. on March 22 and 29.

DELIBERATIVE SESSION SETS SCHOOL VOTE

Sixty-eight registered voters met for three and a half hours on Saturday, February 3, to set the school district articles that will be voted on by official ballot on Tuesday, March 13. As the other newspapers covering the proceedings reported, this year's school deliberative session was more cantankerous than those of the recent past.

There will be 17 articles on the paper ballot that voters will use on election day. All of the articles will be described in the School District newsletter to be mailed to Alton and Alton Bay addresses prior to election day. The polls at the Alton Central Fire Station on Route 140 will be open from 7 a.m. to 7 p.m. on that date, March 13, and absentee ballots may be obtained from the Town Clerk's office in Town Hall.

The four articles that brought about the most vigorous debate at the meeting were those where the Town Budget Committee had a different recommendation than that of the School Board. Article VI started the debate with the School Board wanting to spend \$9,000 to replace the school's folding chairs and storage racks. The Budget Committee's recommendation was to not appropriate any money for this purpose. Article VII for \$23,000 to replace the tractor at school went a similar route with the committee believing the expenditure could be postponed for a year. Both articles will appear on the ballot with the School Board's number of dollars.

Article XI was the focus of more differing views. The School Board is seeking \$500,000 to begin site development work at the new school property on Route 28 South. Loring Carr, Vice Chairman of the Budget Committee, explained that their committee was not recommending any money at this time because the board has yet to develop a plan for the property. The argument in support of starting development is that the access improvements and athletic fields to be constructed with this money are needed regardless of what the full site plan will include. It was also pointed out that monies used for this purpose are eligible for 30 percent reimbursement from the State. Article XI will be on the ballot for \$500,000.

Article XIV, which would approve the cost items in the collective bargaining agreement with the teachers' union, received a full airing, as might be expected. Most of the Budget Committee's objections were on technical points with the article finally emerging to go on the ballot with a sum of \$241,064 representing the additional costs over those paid in the prior year.

The school district's operating budget, in the form of Article XVI, received a microscopic examination as well. Space does not permit any description of the discussion here. What emerged was \$6,282,925 for this purpose (the Budget Committee recommended \$6,256,142). Should Article XVI fail at the polls, the "default" budget that would go into effect is \$6,230,621.

McGrath's Food Center

- Friendly & Courteous Service
- Full Service Deli
- USDA Choice Meats
- Fresh produce
- In Store Bakery
- Wine Section
- Beer Section
- Weekly Specials
- Milk Club
- Special Orders welcome
- Veggie Platters
- Cheese/Cracker Platters
- Deli Platters
- All your grocery needs in one stop!

McGrath's Food Center
has redone it's produce department
Daily, Weekly and Weekend Specials
New Supplier for Lower Prices and Fresher Product
Complimentary fresh Herbs with each Produce Purchase

P.O. Box 490 Alton, NH 03809
875-6104

Winter Hours:
Mon.-Sun. 8 am - 8 pm

Call ahead for sub orders.



Colonial Siding
Home Remodeling

Alton Bay 875-2132
1-800-562-4441

Vinyl siding , Window/Door Replacement, Additions
Kitchens & Baths, Gutters & Shutters, Porch Enclosures
Insured, Free Estimates

SPINNING

Bicycling Conditioning

AEROBICS

Morning and Evening Classes

Denise Merritt, M.D.



10 classes/ \$50 (requires preregistration for each spinning class)
\$200/ 6 months (guarantees a bike or aerobics class two times/week)

call 875-5577



**ARTHUR W. HOOVER
ATTORNEY AT LAW**

Admitted in NH and Maine

*Quality legal service in the areas of real estate,
estate planning, corporate and business law,
and family law.*

ALTON PROFESSIONAL CENTRE
MAIN STREET
P.O. BOX 817
ALTON, NH 03809-0817

Tel: 603-875-2800
Fax: 603-875-3394



**Dockside Country
Properties**

Each Office Independently Owned and Operated

**Karen A. Poisson
REALTOR® NH & ME**

7 Depot Road
New Durham, NH 03855

Toll Free: (800) 371-8007
Office: (603) 859-5500

www.nhlakehomes.com



Serviceing the Lakes Region

RESERVE NOW for your

**"St. Patricks Day"
Corned Beef & Cabbage Dinner
March 17th**

Dockside Restaurant

Alton Bay ~ 875-2110

HUPP'S WATER SYSTEMS

Box 1054, Alton, NH 03809
Pumps, Filters, Tanks & Wells
Call our Water Specialist at:
603-875-6969 or 603-387-0029
License #1346

*Like your furnace: Your water system should
be serviced yearly. Systems running incorrectly mean
higher electric bills. Mention this ad and receive
a system check or water test for \$25.00.*

NEW DURHAM ALTON FARMINGTON

**JOE GOODROW'S
RUBBISH REMOVAL**

875-4488
235 STOCKBRIDGE CORNER ROAD
ALTON, NH 03809

CHRISTIAN WOMEN'S LUNCHEON

The Lakes Region Christian Women's Club will be sponsoring "A March Winds Luncheon" on Wednesday, March 14, from 11:30 a.m. - 1:30 p.m. at the Conference Center on Route 11 in Alton Bay.

"Whispering Pines Crafts" is the Special Feature with Linda Littlefield of Center Harbor who will show her original hand-painted crafts. "Budding Song" is the Special Music with Roger Brown of Meredith. "Early Spring Robin" will be presented by the Special Speaker, Grace Hallas of Danville, Vermont. She will relate her story of difficulty adjusting to country life after moving from Chicago. She loves to travel and will share her story about giving God control of her life.

Reservations for the lunch and the available complimentary nursery may be made by calling in Alton: Janet at 875-2032 between 2 - 6 p.m. or Kim at 875-8173; in Gilford: Harriet at 524-7194 or Faith at 293-8073.

The Lakes Region Christian Women's Club is an interdenominational group with no formal membership.

NEW AT THE GILMAN LIBRARY

FICTION

Brown, Sandra
Card, Orson Scott
Clancy, Tom
Connelly, Michael
DeLillo, Don
Griffin, W.E.B.

Hooper, Kay

Koontz, Dean
Krentz, Jayne Ann
LeCarre, John
Lewis, Beverly
Patterson, Richard North
Perry, Anne
Rosenberg, Nancy Taylor
Silva, Daniel

NONFICTION

Clinton, Hillary Rodham
D'Adamo, Dr. Peter J.,

Gamble, Bruce

LeHaye, T. & Noebel, D.

Quindlen, Anna
Rule, Ann

CHILDREN

Carle, Eric
Marzollo, Jean
Numeroff, Laura
Pullman, Philip
Wood, Audrey
Yolen, Jane

AUDIO CASSETTES

Abbott & Costello
Doyle, Arthur Conan
Tolkien, J.R.R.
The Golden Age of Comedy Radio Classics

REFERENCE

Your Income Tax 2001

Riley in the AM
Shadow of the Hegemon
Tom Clancy's Power Plays: Bio-Strike
A Darkness More Than Night
The Body Artist
Special Ops: A Brotherhood of War Novel
Hiding in the Shadows
Out of the Shadows
Stealing the Shadows
From the Corner of His Eye
Lost & Found
The Constant Gardener
The Redemption of Sarah Cain
Protect & Defend
The Whitechapel Conspiracy
Buried Evidence
The Kill Artist

An Invitation to the White House
Cook Right for Your Type
Eat Right for Your Type
Black Sheep One: The Life of Gregory
"Pappy" Boyington
Mind Siege: The Battle for Trust in
The New Millennium
Short Guide...Happy Life
Empty Promises

Dream Snow
I Spy: Extreme Challenger
If You Take a Mouse to the Movies
The Subtle Knife
Jubal's Wish
How Do Dinosaurs Say Good Night?

Who's On 1st?
The Best of Sherlock Holmes
The Lord of the Rings

SEE THE COMPLETE LISTING
AVAILABLE AT THE LIBRARY





TO PROTECT AND SERVE
By Detective Glenna Heath
Alton Police Department

CROSSING GUARDS NEEDED

We are looking for volunteers from the community to assist us in making sure that our school children are safe on our streets. We have crosswalks located at School Street and Church Street which need to be monitored by "crossing guards" before and after school hours when the kids are going to or from school. The duty officer is not always available to be in the area during these times, and although we have a terrific Auxiliary Officer, Laurie Boyce, she's only able to cover one crosswalk at a time. Please call (875-0757) or stop by if you're interested in helping your community.

The Alton Police Association is having a Spaghetti Dinner Fund Raiser on March 24 at the Masonic Temple on Route 28S in Alton from 5:30 - 7:30 p.m. A full meal will be served to include dessert and coffee, so please bring the whole family and enjoy a break from Spring Fever. Ticket prices are \$7 for adults, \$5 for seniors, and \$4 for kids age 10 and under. See any officer or stop by the station to purchase your tickets. A 50/50 raffle will also take place the evening of the dinner. Hope to see you there!



THE CHECKOUT DESK
By Holly Brown
Librarian

NEW COLLECTIONS

We are pleased to introduce three new book collections that have been recently acquired through donations from the Annie A. Wheeler Book Fund, Eveline Palmer Book Fund, and Oliver J. M. Gilman Book Fund. We hope you enjoy them as much as we do.

The first is a 17-volume set of *Dorling Kindersley Travel Guides*. The set features a vast amount of information and beautiful pictures relating to major cities, states, and countries. If you're planning a getaway or are in need of some interesting facts, be sure to check out this long-awaited collection.

The second is a set entitled *One Nation Books* which provides us with a book on all 50 states. Each title, for grades 4-8, allows readers to learn about individual states and includes topographical maps, Internet sites, words to know, list of famous natives, historical time line, and more.

Finally, if you are in the mood for a "fantastic journey through the solar system to one of the planets," our new *Gateway Solar System Set* will help you make that journey and be home in time for dinner! These books provide current information from NASA about the planets' surface features, weather, atmosphere, and other unusual features. Beautiful color illustrations make these books extra special.

Although your schedule may be very busy, you should consider attending the free Stress Lectures scheduled for March 22 and 29 here at the library. For more information see page 13 of this issue or call 875-2550.

If you missed the "Alton: Re-Designing Main Street" meeting dated October 14, 2000, we have a video-taped copy of the event available for circulation. As mentioned in an earlier issue of *Main Street*, we have a draft copy of the "Streetscape Improvements" at the circulation desk.

The Book Discussion Group will be meeting on March 12 at 6:30 p.m. at the library to discuss *Beachcombing for a Shipwrecked God* by Joe Coomer. Copies of the book are available here at the library. New members are always welcome.



ALTON HOME & LUMBER CENTER

Rte 11, Alton, Open 7 days
(603) 875-3900

Mon-Sat 7:30 am - 5:00 pm
Sunday 8:30 am - 4:00 pm

We have the supplies you need to beat the snow:
Winter sand, ice melt, rock salt, shovels, Fisher plow parts, and more!

"We're the Problem Solvers"

PREMIUM VINYL SIDING CO.
CENTRAL N.H. SEAMLESS GUTTERS

Complete Vinyl Siding and Trim Coverage
Replacement Windows and Doors
(Seamless Aluminum Rain Gutters)
Any Length ~ Many Colors
Gutter Cleaning Also Available



PHONE/FAX (603) 776-3545

T.L.C. Family Hair Care

Main Street, Alton
Located Across From Bank of NH

Senior Discounts Walk-Ins Welcome

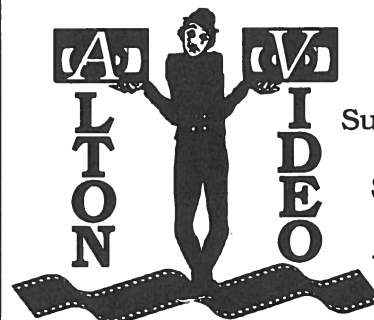
875 - 0260

Winter Hours:

Mon:11-7 Tue:9-5 Thu:11-7 Fri:9-5 Sat: 9-3

Available Wednesdays & Sundays by Appointment

A Full Service Hair Salon for Ladies Featuring Barber Style Cuts for Men



NEW HOURS

Sun. - Thurs. - 12-6:30
Friday - 12-8:00
Saturday - 10-8:00
*Monday - Closed

Your Hometown Video Store

Rentals	Main Street - PO Box 600
	Alton, NH 03809-0600
Fax/Copy Service	(603) 875-2233
	Fax: (603) 875-2288



My Little Sewing Room

875-5329
For Appointment

Brenda MacKay, Master Seamstress
30 years experience



BUCHANAN ASSOCIATES, INC.
www.maxfieldrealestate.com
email: maxb@worldpath.net

FAX#875-6378

1-800-871-5687

875-3128

MAIN ST., ALTON, NH

- Residential REAL ESTATE
- Commercial SINCE 1954
- Waterfront

COMMERCIAL PRINTING
FOR
BUSINESS ~ NONPROFIT ~ GOVERNMENT

Alton Printing Company

Call us for a quote:
603-875-2197
800-439-2197 (NH only)
603-875-3290 fax

Church Street
Alton NH

- ♥ Dry Flower Arrangements
- ♥ Baskets
- ♥ Folk Art
- ♥ Pottery
- ♥ Candles

- Looms
- Beards
- Dolls



Quality hand crafted gifts.

WINTER HOURS:
Thursday - Monday
10 AM - 5 PM

Route 11, Main Street
P.O. Box 236 ♥ Alton Bay, NH 03810
(603) 875-8787

- ♥ Appliqued sweatshirts & Children's Wear
- ♥ Quilts
- ♥ Tole Painting

- Woodworking
- Ceramics

Alton Funeral Home

School Street
Alton, NH 03809
(603) 875-3311



CABIN FEVER BY ANOTHER NAME

This month, some people experience "March Madness." Cabin fever sets in real bad. They are sick of winter, the cold, the snow, and all the problems that go with it. This effects the outdoor person especially hard. The hunting seasons ended in February, the ice fishing season is winding down and ends this month, and the open water fishing season doesn't open until April — what to do ?

For the hunter, coyote season is open year round. Get out and do some deer scouting/coyote hunting. Early this winter I found the tracks of five coyotes in a pack and guess what they were following? The same deer tracks that I was following. If you like deer hunting, the coyote is your main competition. Deer have a hard time moving around on crusted, icy snow. With their restricted movements, they are more vulnerable to coyote predation. If you want better deer hunting next fall, shoot some coyotes now and prevent them preying on fawns this spring. Shoot a coyote, save a deer. Good luck.

Now is a good time to be on the ice as the days get longer and warmer. One can get a good sunburn with the direct and reflected sunlight while ice fishing this month. Use sunblock or tanning oil to protect yourself.

For the salmon fisher person, this is a get ready month. Dust off rods and reels, refresh lines, get the newest gear, patch waders, check out float tubes, refinish paddles and oars, or tie fishing flies. I will tie a few dozen of my favorite flies, especially tandem trolling streamers and bead headed nymphs, to be used in the Merrymeeting River or local docks if there is no open trolling water. I also have some real nice buck tails from last fall's deer harvest that will make some great smelt imitations.

Since there is lots of salmon fishing to do in April, I may as well start refreshing my turkey hunting strategies for May. I might not have time to do this next month!

If you're an outdoors person there is plenty to do this month to get ready for the seasons to come. If all this sounds too tiring, you may simply attend one or more of the many sportsmen's shows this month.

Spring is coming, get ready.

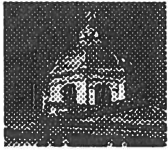
ALL NIGHT PARKING BAN IN EFFECT THROUGH APRIL 1

According to a town ordinance, motor vehicles or trailers are not permitted to be parked or stopped on any highway in Alton between 10 p.m. and 6 a.m. from November 15 through April 1, or at any other time during snow storms when snow removal maintenance is being performed.

The fine is \$10, and vehicles in violation of this ordinance may be towed away at the owner's expense.

SUPPORT Main Street ADVERTISERS!

The publication of Main Street is made possible by the businesses who advertise each month. The proceeds from advertising pay for printing and mailing Main Street to every U.S. Postal Service address in Alton every month of the year. (A volunteer staff writes and assembles the paper.) If this is something that you would like to see continue, your most meaningful contribution is to support the businesses you see in these pages and mention that you saw their ad in Main Street.



CONCORD CORNER
By Senator Rob Boyce
and Representative Laurie Boyce

A SLOW START

Both the Senate and the House had a slow start this session. The bill drafters couldn't keep up with the volume of requests for bills. Some of the more complicated requests are still not done as this is written.

The committees have started working through the bills that are done. The House has taken a seldom-used tack on the budget this year; they will be starting their deliberations from a budget created in the House rather than the one presented to them by the Governor. The difference is in philosophy: the House wants to start with what was spent this current year and add where needed; the Governor would rather start with what was requested by department heads and cut from there.

On education funding there is also a difference in philosophy. The Governor wants to consider methods to fund the schools as a separate issue from the state budget. The Legislature wants to consider all of the state's obligations together — education and the general budget. The difference is: should we try to solve the education funding first and then look at everything else, or is all state spending coming from one pot of money?

The state has an excellent on-line web site called "Webster" at <www.state.nh.us>. It includes all House and Senate hearing calendars, the text of all proposed bills, and the state Revised Statutes (laws) which are up to date. Also listed are all state agencies and departments with on-line information, general information about the state, and even winning lottery numbers.

As always, if you have questions about the legislature or state government, contact one of us or any of your other representatives (Stan Czech, Dave Russell, or Gordon Bartlett). All of our telephone numbers and e-mail addresses are listed in the Main Street Information Center, which appears on page 11 of this issue. Additionally, Laurie holds "walk-in" office hours in the Alton Town Hall on the first Friday of every month from 9 - 11 a.m.

POSSIBLE TAX SAVINGS WITH SPI

The Belknap County Conservation District (BCCD) is accepting soil potential index (SPI) applications that will be due at town offices by April 15. SPI's provide landowners with a rating of the value of their undeveloped or agricultural land based on the types of soils present on the property. The overall rating can have an affect on the town-based taxes for a piece of property. This program offers this incentive to people who keep their land undeveloped. To have an SPI calculated, a landowner should allow time for an appointment at BCCD and a trip to the town hall to have the information processed. For further information or to make an appointment, please contact BCCD at 527-5880.

**WE WELCOME NEW ADVERTISERS
AS WELL AS THOSE RETURNING**

Main Street wishes the businesses in Alton to know that we are always ready to welcome you as an advertiser. If you are new and wish to reach all the postal boxes in Alton, including those with Wolfeboro, Laconia, Gilmanton, and New Durham addresses, we are your means. If you are a former advertiser, consider utilizing our readership potential once again. Contact our Advertising Manager, Jean Stone at 875-5397 or fax her at 875-5399.



BREAKFAST SERVED ALL DAY
LUNCHEON SPECIALS



OLDE BAY DINER

RTE 11, ALTON BAY

875-3700

Licensed Installer



**Bay Pump
Company**

Service & Installation • Septic & Well Pumps
Emergency Service

P.O. Box 71

Alton Bay, NH 03810

Phone 603-235-0272

Fax 603-875-1063



ALTON BAY LAKEVIEW MARKET

DELI, BAKERY, AND GROCERY • CATERING

(603) 875-8888

SUN-SAT 7am-9pm

LET US *CATER* YOUR NEXT AFFAIR FROM OUR *DELI* WHERE THE SANDWICHES ARE MADE TO ORDER. DAILY LUNCH SPECIALS~DELI PLATTERS & SALADS WE HAVE A FULL LINE OF FRESH BAKERY ITEMS BAKED ON THE PREMISES DAILY. CAKES~PASTRIES~BREADS~PIES~SO MUCH MORE SPECIALTY CAKES AVAILABLE WITH 24-HOUR NOTICE. COME PLAY MEGABUCKS/POWERBALL ON OUR NEW LOTTERY MACHINE

Merrymeeting River Resort



Enjoy the last howls of winter, and listen to the breeze echoing through the pines as it calls to spring....

A family mobile home resort
featuring seasonal and
year round homes

Your Hosts:

The White Family - Don, Sandy, Eric & Jean Horn
One mile from Alton circle on Rte 11 East 859.4811

Drop by and See what's for sale.

Alton Coach Inc.

Luxury Transportation Services

- Featuring -

Lincoln Town Cars

Airports • Weddings • Proms • Anniversaries

Nights Out • Business Trips

P.O. Box 537

New Durham Road

Alton, NH 03809

Tel.: 603-875-3672

800-352-2536

Fax: 603-875-3675

Ned Osborn - Member New England Livery Association

ACS's ICE FISHING ADVENTURE

By Wes Taggett and ACS Staff

New Hampshire's Fish and Game Department and Alton Central School (ACS) embarked on an aquatic educational adventure on January 23. The endeavor was a cooperative effort lead by ACS's Enrichment/G&T Department's coordinator, Laura Dwyer, and Mark Beauchesne of the Fish and Game Department.

There were 87 students from grades 4, 5, and 6. Two other teachers, Mr. Thornton, grade 5, and Mr. Kirby, grade 4, joined Mrs. Dwyer in carrying out the undertaking. Additionally, two assistant teachers, several community members from the surrounding area, 22 parent volunteers (including grandparents), and five Fish and Game officers took part in the students' adventure.

The program consisted of a one hour "hands on" introduction to ice fishing that covered basic marine biology, equipment used for ice fishing, fish identification, knot tying, local and regional ecosystems, ice and winter safety, as well as good citizenship. The Fish and Game Department generously donated their time and all bait and tackle necessary for a successful hands-on learning experience.

Wes Taggett, a student at ACS, commented afterwards, "it is all about fun. Fun is learning something new, getting better at something old, and sharing the experience with family and friends." The students found that all of their questions could be answered by the staff on hand, especially the most important "Why aren't we catching any fish?" While everyone had different theories, most of them inventive, the kids took Mr. Beauchesne's advice of chanting and dancing! Eventually they learned that it might have been due to the weather conditions.

When asked what the favorite part of the day was, the students replied unanimously, "We had fun!" Mr. Beauchesne's answer was, "Meeting new people and helping them. Sometimes if I'm lucky, I even make a new friend." At the end of a great day of school on the frozen lake, everyone was excited and ready for more ice fishing education.

It is community programs like this that the ACS strives to provide to ensure our students not only utilize their natural resources, but also appreciate them. Learning should be more than tests scores. It must expand the school's connection with the community and the world to promote life-long learning experiences.

The students and teachers would like to thank all that helped to make this an enriching experience. We will continue, with the community's support, to encourage a wide range of co-curricular activities.



Andrea Shields
603-875-5821

Shields Best Value Gas

Main St., Alton, NH 03809

New Management

A Full Service Gas Station offering

Competitive Prices

Regular - Plus - Super - Diesel - Kerosene

Mon - Fri, 7-6 Sat & Sun 8-6

Discover - Visa - Mastercard Gift Certificates Available



PRE-SCHOOL PROGRAMS, AGES 3 - 5

St. Patrick's Day Party

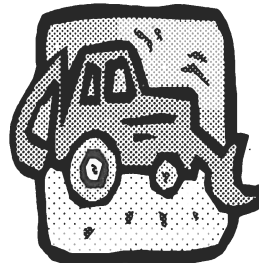
Join in the fun as we celebrate the day for being green. Look for pots of gold and make shamrock pins. Wear green and be Irish for the day. Theme snacks will be served. Program will be held on Tuesday, March 13 at the Alton Bay Community Center from 9 - 10:30 a.m., \$2 fee. Register before March 6 at the Parks and Recreation Department, or call and have a form sent to you. Registration is limited to 8. Sign up early.

Pokemon Fun Day

The Pokemon craze is headed our way. Pokemon Fun Day includes making your own Pokemon figure, theme events, games, and snack. Fun Day does not include playing Pokemon cards; do NOT bring your own cards; we have other events scheduled. Program will be held on Tuesday, March 27, at the Alton Bay Community Center from 9 - 10:30 a.m., \$2 fee. Register before March 20 at the Parks and Recreation Department, or call and have a form sent to you. Registration is limited to 8. Sign up early.

Preview of April Programs

Flashlight Easter Egg Hunt on Friday, April 6, Liberty Tree Park, ages 8 - 12, 7:30 p.m. Easter Egg Hunt, Saturday, April 7, Jones Field, ages 3 - 7, 10 a.m. Pre-School Program.



HIGHWAY HAPPENINGS

By Ken Roberts

Highway Agent

SPRING IS JUST AROUND THE CORNER

The long days of winter are almost over. Have you had your share of the cold icy snow? Good news! Just 20 more days until spring, warmer air, greener grass, and more sunshine. Brush out those horses, shine up that tack.

In the meantime we are still maintaining the roads by salting, sanding, and removing snow from the banks; we are always trying to keep the roads wide. Ol' Man Winter has played hard ball with all this ice and then covering it with snow, thus making travel very difficult.

We do stress safety. Please, give the highway trucks plenty of distance before passing or driving behind them, protecting both you and the drivers. These trucks weigh 15 ton plus and cannot stop quickly.

Please also bear in mind that graveled roads ice over faster than the paved roads and are more severe. Please take extra precautions when traveling on this type of road.

Town Meeting is on March 14. Hope to see you there. Remember, Public Safety Is Our Number One Concern

Mary Jane Dascoli

Notary Public
Justice of the Peace



Alton Fire/Rescue Dept.
Secretary/EMT
Box 472 Alton, NH 03809

Office: (603) 875-0222
Home: (603) 776-5971

CLASSIFIED ADS

Alton residents may place classified ads in any issue of Main Street. As a public service ads are primarily for *non-commercial* private individuals who have items for sale (except real estate for sale or rent), items or services wanted, free items, personals, or help wanted notices. The rate is \$1 for each noncommercial ad of 35 words or less. Each additional 35 words costs \$1. (There is no charge for "Cards of Thanks" or ads under the "Free" and "Ride Sharing" classifications.) The rate for commercial ads is \$12.50 per column inch. Main Street reserves the right to refuse any ad, or edit it for length/style. Ads must be submitted with payment to Post Office Box 210, Alton Bay 03810, by the 15th of the month preceding publication. Submissions may also be placed in the Main Street box at the Alton branch of the Bank of New Hampshire. Ads must contain a phone number.

FOR SALE

1998 PENN YAN, 23', 300 hp inboard, full top, side and aft curtains, EZ loader trailer, very low hours, \$33,000. 569-3252.

FISCHER PLOW, 10', like new, for truck or with frame for front end loader, \$2,400. 569-3252.

ONE HORSE CART, Meadowbrook-type, natural finish, wooden wheels, nice condition, \$850. 569-3252.

FISCHER PLOW, 9', with snow foil, \$800. 569-3252.

KENNEL, 20' x 20', 6' high, 4' gate, less than 8 months old, \$640. 569-3252.

**Large 1 Bedroom Apartment
in private setting
No pets - Available May 1
\$700/month - Call 859-0163**

FOR RENT**ONE-BEDROOM APARTMENT****CALL 859-5191****HELP WANTED**

Lifeguards — Alton Parks and Recreation, full time and part time, June-August, Alton Bay Swim Dock and Town Beach, Red Cross Training and Certifications will be provided to hired applicants. Call 875-0109 for application.

Swim Lesson Instructor — Alton Parks and Recreation, July 23-August 3, 9 a.m.-1 p.m., WSI certification required. Call 875-0109 for application.

GOOD BEGINNINGS OFFERS TRAINING

Good Beginnings will offer a one-day volunteer training course Thursday, March 15, from 9 a.m. to 3 p.m. Instruction will cover newborn care and nutrition, health and safety issues, communication techniques, and community resources.

Good Beginnings, a collaborative program sponsored by VNA-Hospice and Huggins Hospital, provides a caring community which gives help to families and their newborn babies. This service extends to any family in the service area of Southern Carroll County and Alton and Alton Bay.

In addition to a home visit from a nurse, a volunteer will support and help a family during the first three months after the baby arrives. The trained volunteer will be available as a resource for mom and dad, a listening ear, an extra pair of hands to help out with baby or sibling care, whatever might make things go a little smoother.

To register for the training, call Betty John or Bette Coffey at VNA-Hospice, 569-2729.

PTSA THANKS ELEMENTARY STUDENTS

Thanks to all of the elementary students who brought in "Box Tops for Education" coupons this year. Since September the PTSA has received over 4,000 coupons with a value of \$467.80 to spend on articles to benefit the school. Again, thanks to all who have been bringing coupons. Keep bringing them in so the PTSA can begin a new supply for the next school year.

DOG LICENSES**By Lisa Waterman, Town Clerk**

Dog licenses expire on April 30 and are now due for renewal as required by state law. Please bring in an updated rabies certificate and a spayed or neutered certificate, if applicable, with you to the Town Clerk's Office to insure an easier renewal process. The fees are as follows:

Male/Female - \$10

Neutered/Spayed - \$7.50

1st Animal of Senior Citizen over 65 - \$2.

You may mail your license request to Alton Town Clerk, P. O. Box 637, Alton, New Hampshire 03809. Please include the above information, a check in the appropriate amount made payable to the "Town of Alton," and a self-addressed, stamped envelope. We will return your rabies and/or neutering certificate. If you are over 65, please send proof of age.

There will be a rabies clinic in mid-April; please see the April edition of Main Street for the details.

If you *no longer have a previously licensed dog* or have any questions, please call the Town Clerk's Office at 875-2101 from 8:30 a.m. - 4:30 p.m., Monday - Friday.

**IN Main Street
FIFTEEN YEARS AGO . . .**

. . . the Alton Apaches offered a multi-media theater presentation of "I Never Saw Another Butterfly" . . . applications were available for the Housing for the Elderly project . . . voters at Town Meeting turned down proposals to eliminate the Town Administrator's position, for an addition to Town Hall, and development of a community center on Pearson Road, and approved \$128,000 for a new fire truck . . . the School District meeting turned down a \$1.7 million plan for school additions, but approved a motion to reconsider the proposal at a later date . . . Donald Irvin and Jonathan Downing were elected selectmen . . . David McKenney and Walter Brent were elected to the School Board.

TEN YEARS AGO . . .

. . . Bob Calvert was elected selectman and June Tanguay, Jack Henderson, and Steve Parker were elected to the School Board . . . Marion MacDonald was elected chairman of the Board of Selectmen and Pat Merrill was chosen vice-chairman . . . Business After Hours was hosted by The Art Place . . . "Just A Joke" was presented by the High School Drama Club . . . Alton noted the passing of Fred Perkins . . . the Gilman Concert Series presented the New Hampshire Gentlemen . . . the Middle School presented the play, "A Hobo's Lullaby."

FIVE YEARS AGO . . .

. . . Two Alton Central School seniors, Kelly Lord and Matt Pelletier, achieved basketball milestones by scoring their 1,000th career point . . . student musicians from Alton Central School performed at Plymouth State College in the 1996 Solo and Ensemble Festival sponsored by the NH Music Educators Association . . . Clair Fitzgerald was appointed site manager for the Community Action Program in Alton . . . Stan Czech was elected to the Board of Selectmen and Arnold "Pete" Shibley won the three-year position on the School Board . . . Town Meeting approved a record-setting budget of \$3,281,552.



ACS ART SHOWCASED

By Jennifer Van Cor, ACS Art Teacher

Alton Central School (ACS) is proud to showcase student artwork at the Alton Town Hall from March 12 - 30 to celebrate Youth Art Month. Grades kindergarten through seven will be represented by talented students who have produced paintings, collages, drawings, architecture, sculptures, and other forms of art.

We are excited about this year's art show. It is colorful, imaginative, and very expressive. Students have worked hard to achieve success in the visual arts and some of their finest efforts are displayed in this show.

Please come and view their artwork and support our local student talent. The show will be on display at the Alton Town Hall in the first floor conference room and glass case in the main hallway. The hours for viewing are from 8:30 a.m. until 4 p.m., Monday through Friday.

Editors' note: For the past three years we have made a point of examining and photographing this annual exhibit (above photo is part of the 2000 exhibit). We believe you will be delighted at the imagination and quality of the works displayed. Go see for yourself.

PHOTO CONTEST UPDATE

By Joe Harris

The deadline for entries in the Main Street photo contest is rapidly approaching. ALL entries should be in no later than Friday, March 2. The deadline was extended last month to give photographers the opportunity to take advantage of the Winter Festival, the Winnie Derby, and the Alton Bay Fly-In. Unfortunately, the Fly-In was canceled, but there are still many photo opportunities to capture the uniqueness of Alton before the contest closes.

Entry forms and labels can be found beneath the Main Street mailbox located in the main lobby of the Bank of New Hampshire on Main Street. Photos can be deposited in the large blue container under the entry forms.

To date the number of entries has been less than anticipated, but the quality of the photos has been superb. So don't miss out on this chance to have some fun and share your work. All entries will be on display in the lower lobby of the Gilman Library during the month of March.

SENIOR CLASS SPAGHETTI DINNER

Mark your calendars for March 14. On that day the senior class will offer a spaghetti dinner to anyone interested. The great thing about this is it is being held at the Alton Central School Cafeteria and even better, it is the night of Town Meeting. You can go from 5 - 7:30 p.m. to have dinner (and no clean up for you) and then come to the gymnasium for Town Meeting which begins at 7 p.m. The price is \$6 for adults and \$4 for children. Help the senior class with a fund-raising event, make the dinner hour easier for you, and attend Town Meeting to vote on the budget items that will affect your taxes this year.

Bookkeeping & Business Services



Blue Hills View
RR#1 Box 212D
Farmington, NH 03835

Catherine M. Place

Phone/Fax (603) 755-2550
E-Mail place@worldpath.net

Jason Drew



DREW'S CUSTOM SIDING & ROOFING

Quality Installation of
Siding & Roofing of All Types,
Replacement Windows,
Gutters & Decorative Trim,
Storm Doors and Windows
Snow Plowing • Fully Insured
State Registered • Free Estimates

364-2588
Phone/Fax #



Main Street

PO Box 210, Alton Bay, New Hampshire 03810

PRSRT STD
U.S. Postage
PAID
Permit No.2
Alton Bay, NH

**CAR-RT SORT
POSTAL CUSTOMER**