



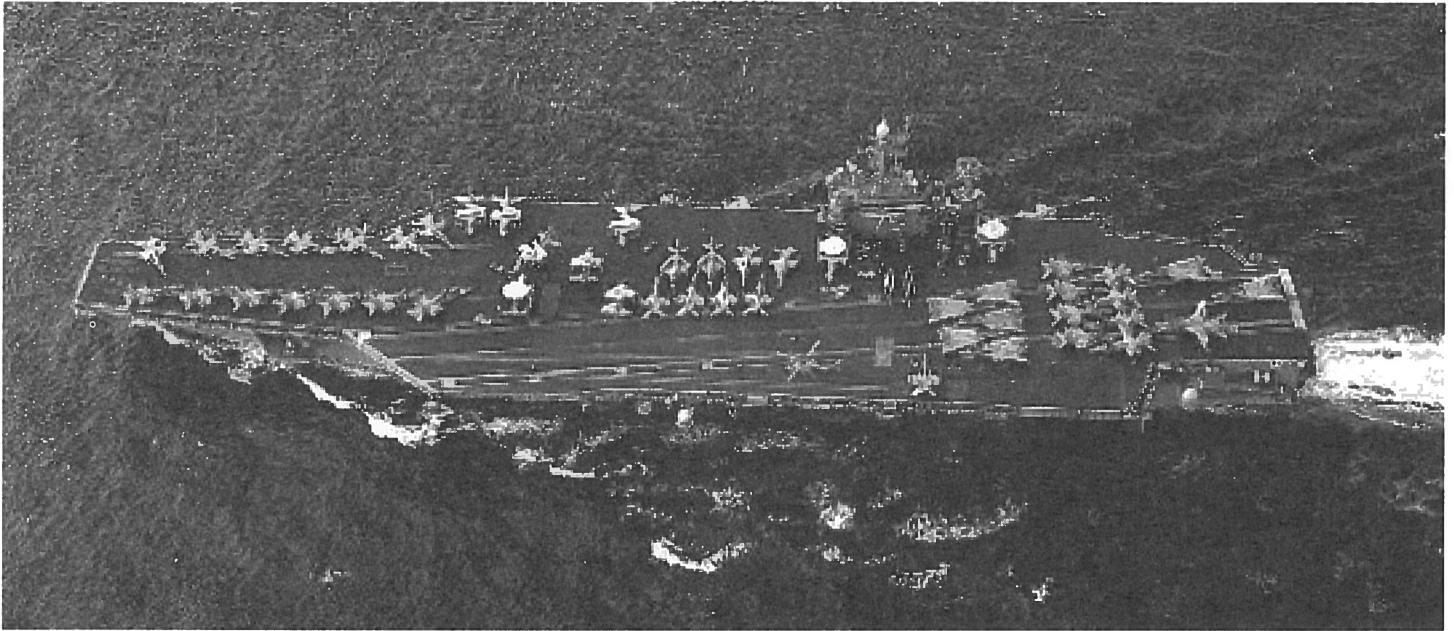
Main Street

A Monthly Newsmagazine

Volume XIX Number 5

Alton, New Hampshire - May, 2003

Complimentary



U.S. Navy Photo



MEMORIAL DAY PARADE

The annual Memorial Day parade is scheduled for Monday, May 26. The parade will start at 10 a.m. at Monument Square, proceed to the cemetery for a brief program there, and then return to Monument Square for the completion of the program. At the conclusion of the ceremonies, everyone is invited to the American Legion for ice cream, cookies, coffee, and soft drinks. Hope to see you there!

TOWN-WIDE YARD SALE

By Kellie Troendle, Parks and Recreation Director

The Parks and Recreation Department is sponsoring its annual Town-Wide Yard Sale on Saturday, June 7, from 9 a.m. - 3 p.m.; the rain date is June 8. If you would like to have a yard sale on June 7, please call 875-0109 before May 12, and we will place your location on the town-wide map. When signing up please make sure to include your complete address with specific directions on how to get to your location. Free maps will be available after May 23 at the Parks and Recreation Department office and kiosk, Alton Town Hall, Gilman Library, Bank of NH, and Alton 5 & 10.

Editors' Note: Since the call up of our nation's armed forces began, Main Street has been sending complimentary subscriptions to Alton residents deployed overseas. One of those recipients, Airman Jaime Sanborn on board the aircraft carrier USS Truman, has responded with several letters which she is willing to have published. Here is the most recent.

MY THOUGHTS WHILE ON ACTIVE DUTY

By Jaime L. Sanborn, Airman, USN

Hello, this is Jaime Sanborn again. I hope you received my last letter. It is now March 24. We have been at war for only a few days.

And I am not writing to give you info on what's going on or what I know, because I don't know except for what I see on TV like all of you. But I have a little something to say that I thought you would like. It's like a page from my journal almost.

It's been almost two months since my feet last touched ground. It feels like it was a dream. There was talk of a beer day. Whoopie, a beer. I'd rather go for a walk in some grass or go shopping in a mall.

Everybody is getting ornery. And yet with us at war there is still talk of where people are going to eat the first night home. All our communications are down except snail mail. And I worry about my family and friends back home. I read their fears, thoughts, and prayers through e-mails but cannot tell them I am okay and I will be coming home. Our position is still in the Med somewhere. I don't know if I am

Continued on page 18



Published Monthly Since 1985

by
Voice of Alton, Inc., A Not-For-Profit Corporation
P. O. Box 210, Alton Bay, NH 03810

Alice Calvert, President of the Corporation and Publisher; Dick Cunningham, Vice President; Jean Stone, Treasurer; Barbara Cunningham, Secretary; Joseph Harris and Judith Pellowe, Directors.

Main Street Staff

Editors for this issue.....The Corporate Board (above)
Art and Layout Editor.....Robert Boyce
Advertising Manager.....Jean Stone
Subscription Manager.....Judith Pellowe
Video Features.....Jesse Lindland
Circulation Manager.....Robert Smith
Assistant Circulation Managers.....James Washburn and Keith King
Assistants: Laurie Boyce, Paulette and John Brooks, Alice Calvert, Ted Cole, Jan Coull, Barbara and Dick Cunningham, Priscilla Farrell, Dot Folsom, Betty Frohock, Paul Frohock, Bill Gould, Joseph Harris, Carol and Everett Hathorn, Ralph Hutchinson, Barbara Ingoldsby, Tyler King, Katrina, Greg, and Nicole Lindland, Jean Roberts, Nancy Thomas, Connie and A.R. Van de Meulebroecke, Scott Sweezey, Frances Washburn, Sandy and Charles Westen, Cliff Wooldridge

ALL OF THE ABOVE PERSONS AND "BY-LINED"
CONTRIBUTORS ARE VOLUNTEERS. NO ONE IS PAID
FOR HIS OR HER SERVICE TO Main Street.

Printed by Independent Color Press
Center Ossipee, NH
Average Circulation (2002) = 3,178

Advertising: (603) 875-5397 Fax: (603) 875-5399
Editorial: 875-5067 or e-mail: <mbelrjtl@earthlink.net>

Subscriptions are available to receive Main Street
by first-class mail @ \$7.50 for 6 issues, \$12 for 12.

Copyright © 2003, Voice of Alton Inc.



Jean M. Stone

Bookkeeping Service
Payroll/Payroll Taxes

Stockbridge Corner Rd
RR 1 Box 240
Alton, NH 03809

Phone: 603-875-5397
Fax: 603-875-5399
Email: jeanstone@metrocast.net

INDEPENDENT COLOR PRESS

PO Box 24
26 Moultonville Rd.
Ctr. Ossipee, NH 03814

603-539-5959

800-676-5090 (NH)
fax: 603-539-6393
icolor@worldpath.net

Mon. - Fri.
7 am - 5 pm

Quality 4 color Printing
Mac & PC platforms
Design & Typesetting
Electronic prepress
Computer to Plate
Free pick-up & delivery
Color Separations
Full bindery including;
Die Cutting & Numbering

*For All Your
Printing Needs*

Printer of Alton's Main Street & other fine publications



**Alton Friendship Scholarship Project
SPRING SPAGHETTI SUPPER MAY 17**

By Susan Houghton, Project Chairman

We Can Change Our World One Child at a Time

The Alton Friendship Project's Spring Spaghetti Supper will be held on Saturday evening, May 17, at the Alton Bay Pavilion from 5 to 8 p.m. For the ticket price of \$6 for adults, \$3 for kids 11 and under, you can enjoy an old-fashioned authentic home-style Italian dinner overlooking beautiful Alton Bay at sunset. The menu consists of spaghetti with meatballs or with meatless sauce, lasagna, salad, rolls, beverage or coffee, and dessert. Advance tickets are available by calling Susan at 875-5780 or CherylAnn at 875-8989, or you may also buy your tickets at the door.

The Spring Creative Competition is in full swing with students hard at work developing their creative writing, art, music, and video entries. Several people have asked if the contest is open to home schooled students as well as campus-based students. The answer is: Yes! Inclusion, not exclusion, is the message of our project. All Alton students are welcome.

Since community is at the center of our mission, family and team entries may be submitted to the Creative Competition. You may work on a writing, art, music, or video entry with your child; then enter it into the Group Category. Group entries will be judged separately in order to level the playing field.

Students should submit their contest entries by May 9 to the Alton Central School Elementary Resource Center (elementary students' entries) or to the High School Guidance Office (middle and high school entries).

Please nominate students for the 2003 Friendship Awards! A nominee must be an Alton Central School or Alton home schooled student, K-12, who demonstrates by his/her actions that he/she support the values of friendship, tolerance, and community service. Awards will be in the form of monetary prizes that may be used for educational materials and supplies, developmental activities or classes, or for college tuition. There are few restrictions on how awards may be used – there's something for everyone. All students in grades K-12 are eligible. Please request a nomination form by calling 875-5780 or 875-8989, or by e-mailing us at <sfh@worldpath.net>.

Thank you all for your support of the Friendship Project, bringing together our community and our school to focus on friendship and community service. We're planning on a great turnout for the Spaghetti Supper on May 17, and we hope to see you there.

OOOOPS!

From the ACS Guidance Office

In last month's Main Street, Alton Central School (ACS) published the Good Citizens for Quarter 2. We inadvertently left off Kristapher Cyr from Mrs. Malone's grade 2 class. Congratulations Kris for a job well done!



Main Street's Inside Front Page

ALTON RECEIVES EPA AWARD

Last month the New England Office of the U.S. Environmental Protection Agency (EPA) selected the Alton Conservation Commission to receive an Environmental Merit Award in recognition of its exceptional work and commitment to the environment in 2002. EPA's Environmental Merit Award is an annual award that recognizes outstanding environmental advocates who have made significant contributions toward preserving and protecting the nation's natural resources.

A delegation from the Conservation Commission received the award at a special Earth Day ceremony that was held at Faneuil Hall in Boston on April 22.

BOARD OF SELECTMEN ORGANIZE

The Alton Board of Selectmen met on Monday, April 7, and one of the first things on the agenda was to elect new officers and representatives for various committees.

The Chairman of the Selectmen for 2003 - 2004 is Don Irvin with Jim Washburn as Vice Chairman. Steve McMahon will be the Selectman representative to the Budget Committee; Don Irvin, Conservation; Jim Washburn, Parks and Recreation, Public Safety Building Committee, and Lakes Region Planning Commission; Pat Fuller, Planning Board and the Coalition Committee; and Bill Ryan, Zoning Board of Adjustment.

Greg Fuller has volunteered to videotape the meetings for airing on cable Channel 26, generally the Thursday night and Friday morning following the meeting.

YOUTH LEAGUE SEEKS YARD SALE DONATIONS

By Kathi Hopper



Baseball and softball are great self-esteem building sports for kids, and no one knows that better than the parents of Alton's children who participate in the Alton Youth League. The chance for children to be part of a team, to work together and rely upon one another, while getting great physical activity, is invaluable.

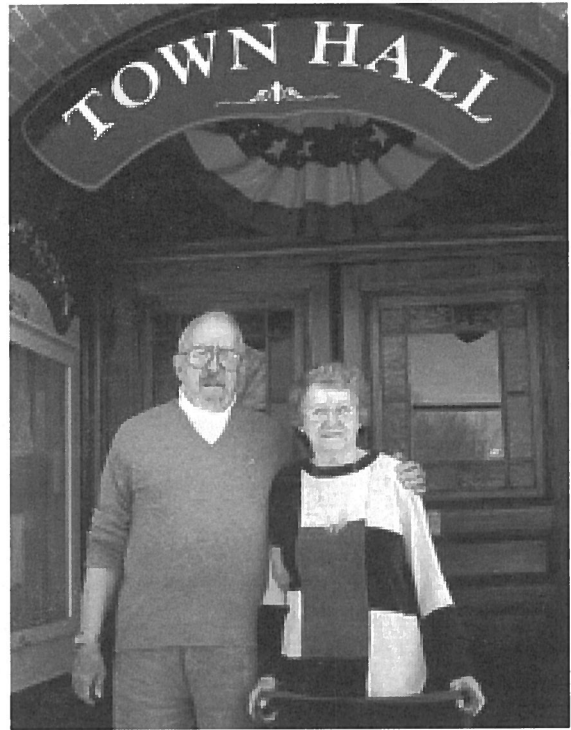
All of this, of course, comes with much planning and necessary funds to support the Alton Youth League's costs of equipment and supplies. This year the league will be participating in the Alton Town-Wide Yard Sale on Saturday, June 7 (rain date June 8).

The League is currently looking for donations for the yard sale, and such items as household goods, linens, CD's, tapes, books, toys, and furniture will be accepted.

"This is the first year we are participating in the Alton Town-Wide Yard Sale," says Youth League president Doug Rojek. "We can use donations, and if you are doing spring cleaning and have unwanted items, we would appreciate the donations to benefit the Youth League. I can't think of a better cause to help out local children in a positive manner."

According to Rojek, the league is also looking for a donation of an upright freezer and/or small refrigerator for use in their snack bar.

Those with yard sale items to donate can call Alton Youth League yard sale coordinators Rick and Kathi Hopper at 293-2327. Items can be dropped off or picked up by an Alton Youth League volunteer.



WORD OF APPRECIATION FOR TWO QUIET PEOPLE

Many of you know them. We see them everywhere, working on committees, boards, special causes, very quietly (usually). They are Fran and Jim Washburn who live up on Alton Mountain Road. They give their time and energy, not for praise, but because they enjoy helping.

Like many of us, they came from Massachusetts (Stoughton). In 1982 they bought their house and land. In 1989 they came here in retirement. In Stoughton, they were involved in the town business. Jim was Assistant Engineer and Fran worked in the Assessor's office. They raised their son and daughter there. Fran, a nurse, spent 17 years working in a nearby nursing home.

If one looks over the many boards, committees and organizations, it can be seen that the Washburns have worked on over half of them. Jim was appointed Selectman in 1992 and later elected to several more terms (nine years so far). Both have served on the Planning Board, Capital Improvement Committee, Budget Committee, Conservation Committee to name a few. Fran served on the Zoning Board of Adjustment for 11 years, chairman for four years.

Since 1989 both have worked in several capacities for Main Street. Both were on the Board of Directors, Fran was Secretary for several years. Jim is still Assistant Circulation Manager. They are always seen at Town Meeting (day and night). Special ad hoc committees on which they have worked are the library addition fund raiser, Civic Profile, Gilman Museum events, and Historical Society events.

Fran's hands are always busy, usually knitting. She dresses little dolls and take them up to the Belknap County Nursing Home. They keep busy, but not too busy, to enjoy their six grandchildren. These two quiet people contribute their time for their own satisfaction. We are lucky they chose to live in Alton. Thank you, Fran and Jim.

ALL EARTH

Loam * Mulch * Gravel * Sand
Stone * Fill * Excavation



Brush Removed
Dirt Roads and
Driveways Repaired

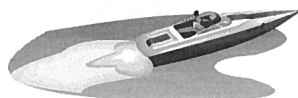
Tel 569-3736 Page 517-5458



Slipcovers
Draperies
Boat Covers

FABRICATIONS

by
Paula



(603) 875-6462
e-mail: pfuller@metrocast.net

▼ Dry Flower Arrangements ▼ Baskets ▼ Folk Art ▼ Pottery ▼ Candles ▼

Looms
Beats
Dolls



The Craft Cottage
Route 11, Main Street
P.O. Box 236 ▼ Alton Bay, NH 03810
(603) 875-8787

Quality hand crafted gifts.

WINTER HOURS:
Thursday - Monday
10 AM - 5 PM

Woodworking
Ceramics

▼ Appliqued Sweaters & Children's Wear ▼ Quilts ▼ Tole Painting ▼



MAIL BOXES ETC.

Your Packing & Shipping Specialist

Authorized UPS - FedEx Shipping & Drop-off Center

Packing & Shipping Supplies, 24hr. Fax Service, Color Laser Copies, B & W & Large Engineering Copies, Computer On Line, Rubber Stamps, Business Cards, Laminating, Binding, Office Supplies, Balloons, Mail Box Rentals, Notary Service
Quality Greeting Cards \$.99

M-F 8-6pm, Sat. 8-2, Sun. 11-1, 569-8940 Fax 569-8942
36 Center Street, Wolfeboro - Across from Dunkin Donuts



Mary Ann Ryan
Sales Associate

Business: 603-875-3128 x14
Fax: 603-875-6378
Toll Free: 1-800-871-5687
E-Mail: bryan@worldpath.net
Buchanan Assoc., Inc.
BOX 993, MAIN STREET, ALTON, NH 03809

ALTON COMMUNITY YOUTH ACTIVITIES MAY

This calendar is a service provided by the Alton Community Youth Activities (CYA) committee. Call 875-8221 for information, suggestions, and corrections.

- Thu 1 Scrabble, all grades, 3-4 p.m., ACS cafeteria
- Fri 2 Youth Center, Drop In grades 6-12, 3-9 p.m., CCOA, open to all community youth
- Sun 4 Jr/Sr HS Youth Group, 4-6 p.m., CCOA Youth Center
Youth Sun. School Classes, 9:30 a.m., CCOA Sun. School, grades 6-8, 9:30 a.m., BC, Rand Hill Rd. Sun. School, grades 9-12, 9:30 a.m., ABCCC, AB Lounge
- Thu 8 Scrabble, all grades, 3-4 p.m., ACS cafeteria
Writing Workshop, grade 7, 12:15-1:15 p.m., ACS, by author David Greenberg
Assembly, grades 1-4, 1:30 - 2:30 p.m., ACS Gym, by author David Greenberg, e-mail <authilus@teleport.com>
- 9 Youth Center, Drop In grades 6-12, 3-9 p.m., CCOA, open to all community youth
Middle School Dance, 6:30-9 p.m., ACS, by PTSA
- Sun 11 Youth Sun. School Classes, 9:30 a.m., CCOA Sun. School, grades 6-8, 9:30 a.m., BC, Rand Hill Rd. Sun. School, grades 9-12, 9:30 a.m., ABCCC, AB Lounge
- Thu 15 Scrabble, all grades, 3-4 p.m., ACS cafeteria
- Fri 16 Youth Center, Drop In grades 6-12, 3-9 p.m., CCOA, open to all community youth
- Sun 18 Youth Sun. School Classes, 9:30 a.m., CCOA Sun. School, grades 6-8, 9:30 a.m., BC, Rand Hill Rd. Sun. School, grades 9-12, 9:30 a.m., ABCCC, AB Lounge
- Thu 22 Scrabble, all grades, 3-4 p.m., ACS cafeteria
- Fri 23 Youth Center, Drop In grades 6-12, 3-9 p.m., CCOA, open to all community youth
- Sun 25 Youth Sun. School Classes, 9:30 a.m., CCOA Sun. School, grades 6-8, 9:30 a.m., BC, Rand Hill Rd. Sun. School, grades 9-12, 9:30 a.m., ABCCC, AB Lounge
- Thu 29 Scrabble, all grades, 3-4 p.m., ACS cafeteria
- Fri 30 Youth Center, Drop In grades 6-12, 3-9 p.m., CCOA, open to all community youth

Legend: AB=Administration Building; ABCCC=Alton Bay Christian Conference Center; ACS=Alton Central School; BC=Bay Church; CCOA=Community Church of Alton on Church Street; CYA=Community Youth Activities; EM=Enrichment Module; HS=High School; PRCC=Pearson Road Community Center; PRD=Parks and Recreation Department.

VACATION BIBLE SCHOOL THE COMMUNITY CHURCH OF ALTON

The Community Church of Alton is presenting a week-long program called "Cruisin' the Amazon — A Jungle Journey to Discover Jesus." This awesome opportunity will be held at the Community Church of Alton on Church Street from 9 - 11:30 a.m. the week of June 23 - 27. All children three years of age through the end of grade 5 are encouraged and welcome to attend. Please call the church secretary at 875-5561 to sign up.

KINDERGARTEN REGISTRATION

For 2003-2004 School Year

Alton School District will hold registration and screening for all children who will be entering kindergarten on August 25. Registration will take place on Monday, June 2, and Tuesday, June 3, at the Alton Bay Community Center, Route 11, Alton Bay between the hours of 8:30 a.m. and 3 p.m. Screening is by appointment only.

Registration packets have been mailed to all parents who have kindergarten-aged students whose names we have. If you did not receive a packet and have a child who will be five years on or before September 30, please call Alton Central School and speak with Sharon Guild (875-0398) or Cathy Ancewicz (875-7373) as soon as possible.

OUR THOUGHTFUL "APRIL PHULE"

The April issue of Main Street carried a story by RJ Trevlac about an Alton couple protecting themselves from terrorism. Each April we publish a lighthearted tale, the answer to which is "April Fool." This year over 23 people were concerned enough to offer help at a "dinner" for the fortunate or unfortunate couple. The story was fun to read, but more than that, the thoughtful offers to help were heartwarming. With all the turmoil in the world, we are very appreciative of caring people and wish to thank all who called.

ALTON HISTORICAL SOCIETY

The Alton Historical Society will meet on Tuesday May 20, 7 p.m. at the Gilman Library. The featured speakers will be Irving Roberts, Rawland Dore, and Dick Downing telling the group about their particular "Alton Remembrances." Among the three of them, their stories could probably go on for more than an evening and will probably spark childhood remembrances. Questions and comments from the audience will be most welcome.

The program will be preceded by a brief business meeting and conclude with refreshments. The hostesses for the evening will be Phyllis Draper, Anne Morse, and Pat Merrill. Please come the group!

QUILTING IN AND AROUND ALTON

The Friends of the Gilman Library held its annual meeting in April where the executive board was voted in once again.

The highlight of the evening was the program pulled together by the treasurer, Shirley Bishop. She had four others besides herself present an overview of what opportunities are available to people in this area who wish to become involved in quilting and other closely related projects. The presenters were Betty Bell, Shirley Bishop, Shirley Lane, Isabel Manson, and Linda Monasky.

The presentation was videotaped for Channel 25, and after its last play on cable, it will be available at the library.

VNA/HOSPICE GERANIUM SALE REMINDER

Saturday, May 10 at the Bank of New Hampshire in Alton, there will be a lawn full of red and pink geraniums! Everyone who purchased plants is urged to pick them up between 9 a.m. and 12 noon. There will be extra plants for sale. Last year it snowed, so let's hope for a sunny day. Come get your Mother's Day and garden flowers.

VNA/Hospice thank you all.

IN MEMORIAM

ARCHIE A. HORNE

(1914 - 2003)

Archie Horne was part of the fabric of Alton for over 50 years. He came here from his hometown, Wolfeboro, in 1949 to operate Horne's Five and Ten store with his wife, Ellie. He was Alton's last Municipal Court judge, serving 18 years. He served on the Budget Committee and School Building Committee. He was Trustee of the Trust Funds and Town Treasurer. He belonged to the American Legion and was a 50-year Mason. Those are some of Archie's accomplishments, but knowing him was a pleasure. His manner was moderate, thoughtful, and outgoing. He cared about the people of Alton and always enjoyed visiting with his many friends. Archie had a fair share of life (88 years). Alton is grateful he gave more than a fair share of his life to our town.



Deli - Take-Out

Alton Circle - Route 28S (603) 875-1000



Boar's Head Brand

INTERIOR • EXTERIOR • FREE ESTIMATES

John R. Boudreau
Professional Painting
(603) 776-6030

Property Management
E-Mail: lrpm@worldpath.net

P.O. Box 369
Alton Bay, NH 03810



SHOP - N - MOP

Does your cottage or house need a Spring cleaning?

Give me a call for home cleaning and personal shopping
Sue Landers 603-859-0163



ARTHUR W. HOOVER ATTORNEY AT LAW

Admitted in NH and Maine

Quality legal service in the areas of real estate, estate planning, corporate and business law, and family law.

ALTON PROFESSIONAL CENTRE
MAIN STREET
P.O. BOX 817
ALTON, NH 03809-0817

Tel: 603-875-2800
Fax: 603-875-3394



ALTON BAY LAKEVIEW MARKET DELI, BAKERY, AND GROCERY ~ CATERING

Sun. 7-4, Mon - Thurs. 7-7, Fri, Sat. 7-9

(603) 875-8888

LET US CATER YOUR NEXT AFFAIR FROM OUR DELI
WHERE THE SANDWICHES ARE MADE TO ORDER.
CAKES ~ PASTRIES ~ BREADS ~ PIES ~ SO MUCH MORE
BAKED ON THE PREMISES DAILY.
SPECIALTY CAKES AVAILABLE WITH 24-HOUR NOTICE.

HUSSEY ENTERPRISES (COFFIN BROOK GRAVEL)

Opening Thurs. May 15, or as soon as the road ban is renounced!
This year we will sell: Gravel, Sand, Loam, Bark, Stone, Hay Mulch


Deliver or Pick up

We are still contracting, Land clearing, Roadwork, Septic Systems,
Reclaim old Field Land and New, All kinds of site work and
excavation; including buildings, woods roads and fire lanes,
Demolition and removal of buildings.
Buyer of Loam, Sand, Gravel

Over 30 Years Experience! "The Personal Touch!"

My Little Sewing Room

Brenda MacKay
at Alton Traffic Circle
Alton, NH

 875-5329

You sew your outs while I stitch your hitches!

Linda's Flowers and Gifts

94 Bay Street, Wolfeboro
569-4513

reasonably priced gifts - custom silk and dried flower
arrangements - kitchenware - custom gift baskets
fresh flower bouquets,

table or vase arrangements with a garden look

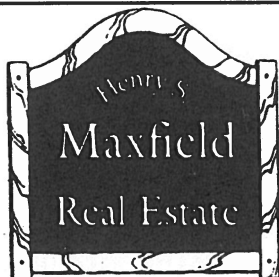
ALSO: JCPENNEYS Catalog Merchant

Now available - Spring and Summer catalog - call us for latest
promotions - \$5.00 coupon with purchase of catalog

BAKER-GAGNE FUNERAL HOMES

Monument company and Cremation Service
P.O. Box 2295
Wolfeboro, NH 03894

Mill St. Rt 16
Wolfeboro, NH West Ossipee
(603)569-1339 (603)539-3301
www.baker-gagnefuneralhomes.com



BUCHANAN ASSOCIATES, INC.
www.maxfieldrealestate.com
email: maxb@worldpath.net

FAX#875-6378

1-800-871-5687
875-3128
MAIN ST., ALTON, NH

• Residential REAL ESTATE
• Commercial SINCE 1954
• Waterfront 

THE CHECKOUT DESK By Holly Brown Librarian



BOOK DISCUSSION GROUP NEEDS A NAME

It was so nice to see familiar friends, as well as new friends, at the annual membership meeting of the Friends of the Gilman Library which was held on Tuesday, April 8. Special thanks go to members of the Alton Quilters who shared some of their unique and beautiful work with us. They all possess a very special talent.

If you were unable to attend the April meeting, the next meeting is scheduled for Tuesday, May 13, 7 p.m. at the library. The guest speaker will be James Kiepper, author of "Styles Bridges: Yankee Senator." Mr. Kiepper will review and discuss his book, share memorabilia of Bridges, and show video clips of Bridges giving speeches and talking with people. Signed copies of his book will be available for purchase (\$20 each) on the night of the program. This program is sponsored by the Oliver J.M. Gilman Lyceum Fund. Refreshments will be provided by the Friends. All are welcome. Admission is free. We hope to see you there.

Are you planning to build your "Dream Home" soon? If so, you may be interested to know that we have a copy of the 1995 Edition of the CABO One and Two Family Dwelling Code Book. This is the latest edition containing the BOCA National Building Code that is essential to building a new home today. Please note that this code book is for library reference only and cannot leave the building.

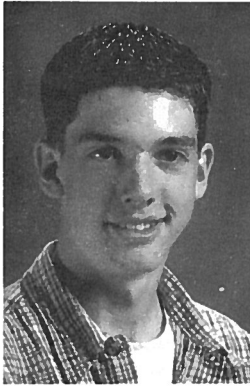
The Gilman Library continually strives to provide valuable information to our community. In an effort to answer the many questions we receive regarding who, what, where, and how, we have created a "Local Information Directory." If you are looking for a specific service or organization, you may want to browse through this directory which contains a wide variety of topics. Two examples of sources provided in the "Information Directory" are Home Schooling Family Connections and Snow Removal. If you provide a service to our community, you are welcome to leave a business card at the circulation desk, and we would be happy to include it in our directory. For more information please don't hesitate to call 875-2550 during library hours.

The Gilman Library Book Discussion Group welcomes your ideas for a unique name for the group. Entries will be accepted until July 1. Place your entry in the suggestion box at the circulation desk. If your idea is selected as the new name for the Book Discussion Group, you will receive a special plaque designed and created by Tut's Trophies & Awards, 99 South Main Street, Rochester. The winner will be announced in the August issue of Main Street.

While giving some thought to a new name for the Book Discussion Group, you might consider joining the group on Monday, May 12, in the Agnes Thompson Meeting Room at 6:30 p.m. as they share their thoughts on *The English Patient* by Michael Ondaatje. New members are always welcome. Attending the discussion may also inspire you to create the perfect suggestion for the Book Discussion Group name. Good luck!

NOTICE

The Town Clerk's Office
Will Be Closed On
Friday, June 6, 2003
For The Lakes Region
Regional Meeting



SNELL PLAYS IN ALL STARS

Submitted by Jennifer H. Snell

The co-captain of the varsity basketball team for Alton Central School has been selected to play in the Granite State Conference All-Star Basketball Game.

While the basketball season ends, Senior Dave Snell was busy warming up for competition in the North vs. South All-Star Basketball Game. One senior was chosen from each Class S Division School to play in this "all stars" game. Nominated by his coach, Jim LaFreniere, Snell represented Alton at this event, which took place at Plymouth State College on Friday, March 21.

Snell first participated in organized basketball when he was nine years old with the Rochester Recreation Center. The now six-foot three athlete began playing on Junior Varsity as a freshman for the Alton Apaches in 1999. Snell quickly moved into the starting line up as a sophomore where he played for both Varsity and JV. He has not missed a game in the last three years. Snell started in all 17 games for Alton Central School this season, contributing to an average of 12 points per game, and dozens of rebounds. He tops off his high school career with his team finishing in tenth place among the 22 teams.

"Basketball has taught me teamwork, perseverance, good work ethic, and dedication. I'm very excited to be playing at Plymouth. I always wanted to play there, but my team never made the quarter finals."

While he ranks in the top ten of his graduating class, Snell is also active in the National Honor Society, SADD, and Big Brother and Sister program. He will participate in the varsity baseball team this spring and played on the golf team this past fall. As a junior he was selected as one of two winners from Alton for the New Hampshire Electric Co-op Essay Contest for which he received an all-expense-paid trip to Washington, DC for a week.

Snell would like to coach middle and high school basketball in the future. He plans to attend University of New Hampshire in the fall with the intention of pursuing a degree in education.

LAMPMAN HONORED

Vanessa Lampman, a student at Alton Central High School, was selected to participate in this year's New Hampshire Allstate Art Festival hosted by the Currier Museum of Art. Once nominated, Lampman had to submit a written application and slides of her work before being interviewed. The process was competitive; typically fewer than half the students nominated are accepted into the program.

Sixty-three students from 27 high schools throughout New Hampshire spent two days at the Currier Museum of Art for this fifth annual art festival which featured an intense, two-day studio collaboration with professional artists.

The weekend culminated in an open house and closing ceremony at The Currier Gallery.

AFTER SCHOOL PROGRAM

THE COMMUNITY CHURCH OF ALTON

The Community Church of Alton is interested in starting an after school program for children kindergarten age through 12 years of age. The program will begin in the fall of 2003. In order for this program to be successful, we need a minimum of 20 students. If you are interested in enrolling your child and would like more information, please call the director, Margie O'Toole, at 776-5633.

CHRISTIAN WOMEN'S LUNCHEON

The Lakes Region Christian Women's Club will be sponsoring a "I Don't Do Windows" Luncheon on Wednesday, May 14, from 11:30 a.m. - 1 p.m. at the Conference Center on Route 11 in Alton Bay.

Special Feature — Janine Vary, a computer teacher from Tilton, will "teach" us the *Do's of Windows*. Special Speaker — Carol Richards-Connor from Meredith will open the *Windows of Her Life*.

Reservations for the lunch and the available complimentary nursery may be made by calling Melissa in Alton at 776-2224, Karen in Alton at 875-8144, or Faith in Gilford at 293-8073.

The Lakes Region Christian Women's Club is an interdenominational group with no formal membership.

Superior Cleaning

"Clean to Perfection"

Residential • Offices • Seasonal Homes
Reasonable Rates • Fully Insured

817-0716

P.O. Box 124
Alton, NH 03809

Now Offering
Complete Air Conditioning Service
N.H. Motorcycle Inspection

AUTO IMPORTS SERVICE

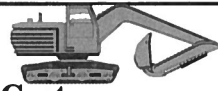
AUTO REPAIR-ALL IMPORTS & DOMESTICS TOO
ROUTE 11 HC 73 BOX 532 ALTON BAY, NH 03810

- MAJOR & MINOR WORK
- ENGINE REBUILDING OUR SPECIALTY
- NH STATE INSPECTIONS
- DEPENDABLE SERVICE AT COMPETITIVE RATES

Monday - Saturday
Call for Appointment

Over 28 Years Experience
Roger Bergeron, Owner

603-875-6148



Alton Home & Lumber Center

Rte. 11, Alton NH - Open 7 days
 Mon-Sat 7:00am-5:00pm, Sun 8:30am-4:00pm
 "We're the problem solvers" 603-875-3900

RDS Dock Hardware, Lawn Fertilizers, Potting Goods, Bark Mulch, Loam, Sand, Gravel, Crushed Stone, Blocks, Wood Trusses, Mouldings, Glidden Paint, Cabot Stains, KD Lumber, Sheetrock, Finish Pine, Plywood, IKO Shingles, Hardware
 Package Express - shipping by UPS, Hot Tubs

Starting May 1st Hayburner's Market

Featuring Poulin grain with most pet and livestock food and supplies.



We rent Caterpillar Machinery: two skid steers, mini-excavator, backhoe and attachments

MORTGAGES



Randy Potter

- Purchase • Refinance
- Construction Loans
- First Time Home Buyer
- Quality Service

875-0518



CITIZENS

MORTGAGE CORPORATION

Member FDIC

Equal Housing Lender

MORTGAGES

HEARING AIDS

Robert I. Williams
 BC-HIS

**HIGHEST QUALITY
 BEST PRICES
 FAST SERVICE**

1-800-538-4064

**EXPERT SERVICE
 ALL MAKES**

Offering

Starkey's PFS - 6000

Computer testing & fitting system. Improving accuracy and comfort in Hearing Correction. Digitally Programmable Sequel® Available

**HALL'S
 PHARMACY**
 10-1 Mondays
 Wolfeboro 569-2374

WILLIAMS BLDG
 By Appointment
 Rt. 11 Alton
 875-6059

CARNEY DRUG
 10-1 Wednesdays
 Rochester
 332-2132

FREE HOME VISITS - FREE HEARING TESTS

BUILDING PERMITS CONTINUE UPWARDS

By Brian Boyers, Alton Code Official

In the year 2002 the Town of Alton saw an increase in building permits from 266 in 2001 to 340 in 2002. The new house starts were up from 57 the previous year to 80 new houses last year, with 3 new manufactured homes and 2 multi-family conversions for a total of 85 dwelling units created.

The breakdown of the 340 permits in 2002 is as follows: 80 new homes, 3 manufactured homes, 47 additions, 31 dock/breakwater permits, 29 decks and porches, 21 garages, 36 sheds and barns, 2 multi-family conversions, 5 foundations, 7 seasonal cottages, 43 remodels, 4 commercial buildings, 1 commercial remodel, 3 boat houses, 1 in-ground pool and 1 modular classroom.

The upward trend continues inasmuch as of April 17 we were already 11 building permits ahead of where we were at this point in 2002.



SUCH A DILEMMA!

May is a wonderful month for the outdoor person. There are many choices to be made. One may hunt, one may fish, maybe do both, such a dilemma. We are lucky to be able to make these choices in the Alton area.

As I write this, 99.9 percent of the Big Lake is still frozen. By the time you read this most ice will be gone, but some believe "ice out" will not arrive until the middle of this month. That means the salmon fishing will be extended this year as the ice slowly melts away.

As I mentioned last month, the salmon this year are supposed to average 21 1/2 inches and weigh four pounds. This was the average size of the salmon netted last fall for egg stripping. This seems to be proving true as my wife, Cindy, caught a beautiful 22 inch-long, five-pound "big silver" in Alton Bay with the ice out just to the bandstand. I always check the stomach contents of the fish I keep to see what they are eating at that time. This one was stuffed with a few smelt and lots of 1 1/2-inch small mouth bass, something I have never seen before. More than once I found a cigarette butt in a salmon's stomach. A new kind of bait?

On May 3 one must make a difficult choice. Do I go turkey hunting or salmon/rainbow/lake trout fishing? Luckily, you can do both! Turkey hunting (which runs May 1 - 31) starts daily one half hour before sunrise until noon. Fishing may be done one hour before sunrise until two hours after sunset. Soooo...turkey hunt in the mornings and fish in the evenings. Perfect!

Turkey hunting should be good this year as the numbers continue to rise. There may have been some winter loss due to the prolonged snow, but local turkeys seen to be okay. Tom (male) turkeys were gobbling already in response to a friend's early morning crow call. I guess they are ready for spring too. Having listened to a turkey calling CD and practiced our calling techniques, we are ready for spring turkey hunting.

As the waters warm small mouth bass start coming into the shallows. Remember, right now you may keep two bass, but May 15 - June 15, ALL bass must be immediately released at the site of the catch. June 16 through June 30 you may keep two bass. Pond and stream fishing starts getting good this month as the bugs come out.

Decisions, decisions, decisions. What's an outdoor person to do?



20(!) YEARS OF COACHING FOR ACS

By Scott Hutchins ACS Athletic Director

Coach Gary "Bubba" Noyes (shown above on the left with Superintendent Parks) was recently honored by the New Hampshire Coaches Association for serving over 20 years in the coaching ranks at Alton Central School (ACS). The banquet was held on March 18 to recognize coaches in the state for their years of service. Throughout his coaching career Coach Noyes has been involved with many kids in the town of Alton.

Not only has Coach Noyes been a high school soccer and baseball coach, but he has been involved with the town leagues as well. Some of these programs include Youth League Soccer, Little League Baseball, Babe Ruth Baseball, Senior Babe Ruth Baseball, and numerous sport clinics.

When he is not on the field coaching, Bubba can always be found helping with lining the fields for upcoming events or watering the grass over the summer. His commitment to the kids and programs is second to none. Alton is very lucky to have such a great man to serve our kids in their athletic endeavors.

Congratulations Coach Noyes! Thank you for making a difference in the lives of all the athletes who have played for you.

WATER'S EDGE BUILDER

Quality Builder Since 1991

*Custom Homes - Additions & Garages
Decks & Screened Porches - Steel & Asphalt Roofs
All Season Camp Care & Security Checks
Snowplowing & Sanding*

~ Customer Satisfaction Guaranteed ~

~ Fully Insured ~ Free Estimates ~

**Wes Whittier
Powder Mill Road
Alton, NH**

**Call Today
Office (603)875-2343
Cell (603)387-7419**



Foley & Son Painting

**Residential Painting ~ Interior/Exterior
Cedar Sealant**

Power Washing Log Homes and Cedar Homes

**Cedar Spray & Wood Restoration
House Washing - Logs - Lindals
Clapboards - Shingles**

*Low pressure washing with cleaning solution.
Cedar Spray can make your natural wood
home look new again.*

(603) 875-7540

Call Today For a Free Estimate

ALTON FUNERAL HOME

School Street 875-3311

**"The Peaslee Family"
Pre-Planning Available**

Jason



**DREWS CUSTOM
SIDING & BUILDING**

Quality Installation of
Siding & Roofing of All Types.
Replacement Windows

Sun Rooms

Builder of Homes, Additions,
Decks Garages & Remodeling.

Insured

State Registered ~ Free Estimates

Phone/Fax # 364-2588



**CLIMBING • DIFFICULT TAKE DOWNS
REMOVAL WOOD • LOGS • BRUSH**

RR1 Box 224-A1
Dudley, Rd. Alton, N.H. 03809

INSURED/FREE ESTIMATES

Tel: 776-6127

Bruce Waterman

TitlePro LLC

*Providing Timely Services For All Of
New Hampshire and Southern Maine*

Personal Attention Reasonable Prices

PO Box 790, Alton, NH 03809

866-875-4400 603-875-4400

titlepro@worldpath.net fax: 603-875-4401



Computer and Network Support Services

- ◆ Computer Sales
- ◆ Software Sales
- ◆ Computer Repair
- ◆ Printer Setup
- ◆ Printer Maintenance
- ◆ Service Contracts
- ◆ Network Installation
- ◆ Internet & Intranet Setups
- ◆ Cabling
- ◆ Network Repair
- ◆ Network Reconfiguration
- ◆ System Upgrades

Toll Free

1-877-743-DATA

Servicing the Lakes Region & the Concord area

◆ **Alton 776-DATA** ◆

◆ **Concord 224-8866** ◆

◆ **www.d-d-x.com** ◆ **info@d-d-x.com** ◆

BUDGET COMMITTEE NEWS

By Cydney Johnson, Chairman

The Budget Committee elected new officers at their March meeting. Serving as Chairman this year is Cydney Johnson, Vice Chairman, Loring Carr, and Secretary, Nina Dea-Chambers. Other members of the committee are: Brad Smith, Greg Fuller, John Brooks, and Norm Nardello. At this time it is undetermined who will serve as the Selectman's Representative or the School Board Representative to the Budget Committee.

We do have two openings left on the committee and encourage anyone who may be interested to contact me, Cydney Johnson at 875-7448 or Loring Carr at 776-6003. I am confident that any volunteers will find this to be an enjoyable and enlightening experience.

Our next meeting will be posted at both the Town Hall and the Post Office. Please feel free to join us and see what happens during a Budget Committee session. These meetings are always open to the public. We look forward to seeing you!

FROM THE SUPERINTENDENT'S DESK

By Donald E. Parks
Superintendent of Schools



LOOKING TO THE FUTURE

The construction of Prospect Mountain High School started on Monday, April 14. The schedule calls for silt fencing to be installed, clear cutting the lot, building the road, and constructing the building pad so the footers and floors can be poured. Once the pad is complete the steel work can start.

Two athletic fields, one soccer and one softball field, will be constructed this summer, which will make them available for use when the school opens in September 2004.

The construction site is closed to the general public. Periodically visits will be arranged for people to visit the site. Dates and times will be released later.

The architect, SAU 72 Superintendent, Clerk of the Works, School Board member, the general contractors, and subs will conduct weekly meetings.

The Clerk of the Works, Barry Elliott, started his duties on the same date as construction, although he has been attending building committee meetings all winter. A pre-construction meeting, which is now required by the State of New Hampshire, and is a standard practice anyway, was attended by all the parties involved in the project. All representatives pledged to work together and to get the project done on time, with quality of work as the focus.

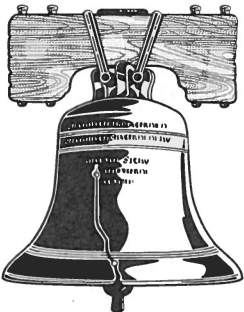
The recruitment of teachers for Alton Central School is complete. The following new teachers have been hired, and the grades/subjects they will teach are listed for your information: two elementary; two English; one Spanish; one guidance; one reading director; and one social studies

The recruitment of a new principal to replace Russell Holden, who has been appointed principal at Prospect Mountain High School, is well underway. The closing date for applications was April 14. Screening of candidates and interviews took place the week of April 21-25. Interviews will be conducted the week of May 5-9.

*Remember:
Mother's Day*

LIBERTY INSURANCE

LOW COST CAR INSURANCE



CALL US FOR A QUOTE

Alton 875-3511

Farmington 755-3511

Dockside Country Properties
Independently Owned and Operated

7 Depot Road
New Durham, NH 03855
Office: 603-859-5500
Toll Free: 800-371-8007
Fax: 603-859-5501
Residence: 603-473-8330

Karen A. Poisson
Realtor, NH, & ME
www.nhlakehomes.com



HOLDEN TO BE PRINCIPAL OF P.M.H.S.

The Alton/Barnstead Joint School Board appointed Russell E. Holden as Principal of Prospect Mountain High School at a special meeting held in Barnstead after the April issue of Main Street had gone to press.

Holden was selected from a field of four finalists, one of whom withdrew and accepted a school principal's position at another district in New Hampshire. JMA Board Chair, Wayne Fraser, stated, "it was a difficult decision because there were three highly qualified candidates."

Holden will start the position on July 1. Salary and other terms of a contract are presently being negotiated.

Holden received a Bachelor of Science Degree from Springfield College and has a Master's Degree from Fitchburg State College. He held previous positions as assistant high school principal at Spaulding High and Supervisor of Athletics and Physical Education at the Lighthouse School in Chelmsford, Massachusetts. Holden was selected as one of the top 40 under 40 persons in New Hampshire in the Manchester *Union Leader's* annual program last fall.

Starting as principal of Alton Central School in August, 2000, Holden and his wife Paula have one son with another child expected this fall. They are currently building a new house in the Alton/Barnstead area.

NEW ENGLAND BRASS BAND TO PERFORM

The New England Brass Band will perform in the Farnham Memorial Tabernacle of the Alton Bay Christian Conference Center on Saturday, May 24, at 7:30 p.m. The concert will be free of charge, compliments of the Lyceum Fund of Alton.

Led by Mr. Douglas Yeo, bass trombonist with the Boston Symphony Orchestra, the New England Brass Band is comprised of 30 musicians carrying on the tradition of the British Brass sound dating back to the early 1800's. Having been formed in 1988 the band performs a broad range of selections — from Souza to Strauss, from Mozart to Glenn Miller, from baroque to ragtime. They may even include the more contemporary sounds of composers such as Andrew Lloyd Webber.

The band has performed in Boston's Fanuel Hall and Boston University's Tsai Performance Center, as well as Symphony Hall. Recently they have been doing concerts of sacred music in a number of New England churches. Their concert at Alton Bay will include a wide repertoire but will lean heavily on the sacred and patriotic themes in conjunction with the Memorial Day weekend.

For information about concerts and speakers throughout the months of July and August, call the Conference Center at 875-6161.



ALTON VILLAGE 5 & 10
at the Alton Traffic Circle
875-5510



WELCOME
TO OUR NEW ADDITION
We look forward to meeting
your needs more completely now!

* * * * *

We wish you a safe and respectful
Memorial Day Weekend

* * * * *

Please keep those who serve, and their families, in your prayers.



Since 1976

Colonial Siding

Home Remodeling

Alton Bay 875-2132

NH 1-800-562-4441

Vinyl Siding, Window/Door Replacement, Additions
Porch Enclosures, Repairs, Kitchens & Baths

Insured



NAPA AUTO PARTS - FARMINGTON

WE CARRY A FULL LINE
OF AUTO PARTS & ACCESSORIES
INCLUDING...



- Parts for Imports
- Parts for Trucks
- Paint & Supplies
- Brand Names You Rely On



ASK ABOUT NAPA'S NATIONAL WARRANTY PROGRAM

NAPA AUTO PARTS

Route 11 - Farmington

755-2264 • 800-734-2269

Mon-Fri 6 am to 5:30 pm

Sat 6 am to 5 pm • Sun 9 am to 1 pm



Main Street's

MAY EVENTS

Fri.	2	BCCD PLANT SALE, see story for times and places
Sun.	4	BREAKFAST, American Legion, 8 a.m. - 12 noon
Mon.	5	BOYS BASEBALL vs. Moultonboro Acad., 4 p.m.
Tue.	6	COED TRACK & FIELD at Newfound HS, 3:30 p.m.
Wed.	7	BOYS BASEBALL vs. Portsmouth Christian, 4 p.m. GIRLS SOFTBALL vs. Portsmouth Christian, 4 p.m.
Thu.	8	BLOOD PRESSURE CLINIC, Pearson Road Community Center, 10:30 a.m. - 12 noon
Sat.	10	VNA/HOSPICE GERANIUM SALE, Bank of NH, Main Street, 9 a.m. - 12 noon, see story COED TRACK & FIELD at Belmont HS, 10 a.m.
Sun.	11	MOTHER'S DAY
Mon.	12	BOYS BASEBALL at Sunapee Middle HS, 4 p.m. GIRLS SOFTBALL at Sunapee Middle HS, 4 p.m. BOOK DISCUSSION GROUP, Library, 6:30 p.m., see Checkout
Tue.	13	COED TRACK & FIELD at Kingswood, 3:30 p.m. BREAKFAST, American Legion, 8 a.m. - 12 noon
Wed.	14	CHRISTIAN WOMEN'S LUNCHEON, ABCCC, 11:30 a.m., see story
Fri.	16	BOYS BASEBALL vs. Pittsfield Middle HS, 4 p.m. GIRLS SOFTBALL vs. Pittsfield Middle HS, 4 p.m.
Sat.	17	ARMED FORCES DAY SPAGHETTI SUPPER, Alton Friendship Scholarship Project, Alton Bay Pavilion, 5 - 8 p.m., see story
Sun.	18	BREAKFAST, American Legion, 8 a.m. - 12 noon
Mon.	19	BOYS BASEBALL at Nute Middle HS, 4 p.m. GIRLS SOFTBALL at Nute Middle HS, 4 p.m.

Tue.	20	COED TRACK & FIELD at Kingswood, 2:30 p.m. HISTORICAL SOCIETY, Library, 7 p.m., see story
Wed.	21	ALTON CENTRAL SCHOOL, Early release day BOYS BASEBALL vs. Concord Christian, 4 p.m. GIRLS SOFTBALL vs. Concord Christian, 4 p.m.
Thu.	22	CHORAL CONCERT, Grades K - 3, ACS, 6:30 p.m.
Fri.	23	BOYS BASEBALL at Moultonboro Acad., 4 p.m. GIRLS SOFTBALL at Moultonboro(double header)4 p.m.
Sat.	24	COED TRACK & FIELD at Calvary HS, 9 a.m. HIGH SCHOOL PROM, 6 - 11 p.m., Castle in the Clouds NEW ENGLAND BRASS BAND, ABCCC, 7:30 p.m., see story
Sun.	25	BREAKFAST, American Legion, 8 a.m. - 12 noon
Mon.	26	MEMORIAL DAY PARADE, Monument Square, 10 a.m., see story
Tue.	27	BOYS BASEBALL vs. Calvary Christian, 4 p.m. GIRLS SOFTBALL at Calvary Christian, 4 p.m.
Thu.	29	ASSEMBLE <u>Main Street</u> , American Legion Hall, 6:30 p.m. CHORAL CONCERT, Grades 4 - 8, ACS, 7 p.m.
Fri.,	30	BOYS BASEBALL vs. Sunapee Middle HS, 4 p.m. GIRLS SOFTBALL vs. Sunapee Middle HS, 4 p.m.
Sat.	31	COED TRACK & FIELD, Class Championship, TBA

ABCCC=Alton Bay Christian Conference Center; ABB=Alton Bay Bandstand; ACS=Alton Central School

TO LIST YOUR EVENT SUBMIT WRITTEN INFORMATION TO:
(1) P. O. Box 210, Alton Bay, 03810 or (2) Bank of New Hampshire (Main Street box) **Be sure to include a phone number.**

NEW HAZARDOUS WASTE PROGRAM

By Sarah M. Silk, LRHHPF Site Coordinator

The new permanent Lakes Region Household Hazardous Product Facility (LRHHPF) will be open for the 2003 season. Alton has joined as a member town which means monies have been included in the town budget to cover disposal of household hazardous waste at the new facility. The LRHHPF offers many more opportunities to safely and conveniently dispose of common hazardous products found in your home.

However, the process will be slightly different from the one-day collection that Alton has participated in before. So that you are not disappointed when you arrive at 404 Beach Pond Road, Wolfeboro, **please** read the following **important** procedures carefully.

How often is the facility open? One day per month for six months.

What day is the facility open? The third Saturday of the month May through October.

What are the hours? 8:30 a.m. to 12 noon.

What do you do before you leave Alton? See the attendant at the Alton Solid Waste Center to pick up a pass. A portion of the total number of passes will be issued each month. There is no charge for the pass. They will ask for your name, address, and phone number. Passes help to keep track of the number of households that attend so as to stay within the budget for your town. You will be asked to turn in the pass at the facility when a short survey is filled out. If you do not have a pass when you enter the facility, you may 1) return when the facility is open with a pass and your waste or 2) pay the same fee as a non-member household and drop off your waste right then.

How to safely transport your hazardous products: Place the original containers of hazardous product in a sturdy cardboard box; crumpled newspaper will help prevent breakable containers from tipping. Fewer trips to each vehicle means shorter waiting

times at the facility.

How much can you bring? There is a 10-gallon limit. Reminder: 4 qts = 3D 1 gal, 2 pts = 3D 1 qt. **Note:** The waste hauler counts the containers to determine the limit, NOT actual contents.

Where it is and how to get there: The new facility is located at 404 Beach Pond Road, Wolfeboro. Turn left onto Route 109A at Wolfeboro Falls (just past the Army tank at the Wright Museum), look for the cemetery on the right, and turn right onto Beach Pond Road. The facility will be on your left at the bottom of the hill prior to reaching the Wolfeboro Solid Waste Facility.

How to find out more: Look for the new GREEN LRHHPF brochures coming to your town soon. If you have a specific question, call the facility and leave your name, phone number, and the best time of day to reach you at 569-Let's Take Care Of it. (569-5826) Messages are checked frequently. Watch newspapers for our cable Internet hook-up date and address to send an e-mail with your questions. Listen to local radio stations for more Let's Take Care Of it bulletins.

What to bring? From the garage: radiator cleaners, brake and transmission fluid, car wax/polish, carburetor cleaners/degreasers, gasoline and diesel fuel; **From the yard/garden:** pesticides, herbicides and weed killers, pool chemicals, sealants (non-latex), muriatic acid, rust preventative; **From the workbench:** paint stripper and thinner, OIL-based paints (latex/water cleanup paint is not a hazardous waste), spray paint, stains and varnishes, wood preservative. **From the house:** arts and crafts supplies, drain cleaner, dry-cleaning fluids, floor polishes/cleaners, oven cleaner, metal polish, photo chemicals, roofing tar, unbroken fluorescent bulbs. Products with labels saying, "Danger," "Warning" "Poison," "Caution" are probably hazardous.

What cannot be brought? Ammunition/fireworks, explosives, radioactive materials (smoke alarms), gas/propane cylinders; latex paint or latex-based joint compound (add kitty litter or sand to dry out and send to most transfer stations); empty/solidified oil-based paint cans (send to most transfer stations)

Information Center

SCHEDULES

CHURCHES:

- Baha'i Fireside — Thu., 7:30 p.m., Holway Residence, Old New Durham Road
- Bay Church — Services on the grounds of the Alton Bay Christian Conference Center. Sun. School, 9:30 a.m.; Worship Service, 10:45 a.m.; Wed. Fellowship Supper, 6 p.m., followed by Discipleship Study, 7 p.m. Rev. Robert H. Hett, Pastor; 875-6765
- Community Church — Sun. Service, 8:15 and 10:45 a.m., Congregational Meeting House, Church Street, Sun. School, 9:30 a.m., Rev. Peter Bolster, Pastor; 875-5561
- First Free Will Baptist Church — Sun. School, 9:45 a.m.; Church, 11 a.m.; Evening Service, 6 p.m.; Wed. Prayer Meeting, 7 p.m.; Depot St., New Durham; Pastor James Nason
- North Barnstead Congregational Church — Sun. School and Worship Services, 10:30 a.m., 504 N. Barnstead Rd, Rev. Gray Fitzgerald
- St. Joan of Arc — Weekend Masses in the Rectory — Sat., 5 p.m. and Sun., 8 and 11 a.m.; weekday Masses, Mon., Wed., and Fri., 8 a.m. at St. Cecilia's, Wolfboro; Tue., Thu., and Sat., 8 a.m. at Rectory Chapel; Sun. Mass St Paul's in Barnstead, 9:30 a.m.; Rev. George Ham; 875-7191
- Wolfboro Bible Fellowship — Sunday School, 9:30 a.m.; Worship Service, 10:30 a.m.; Evening Service, 6 p.m.; Wed. Prayer Meeting, 7 p.m.; Route 28; Pastor Scott Button

GILMAN LIBRARY: 875-2550

Tue. and Thu., 11 a.m. - 7 p.m.; Wed. and Fri., 9 a.m. - 5 p.m.; Sat., 9 a.m. - 1 p.m.; closed Sun. and Mon.

SENIOR MEAL SITE: 875-7102

Mon - Fri., 10 a.m. - 2 p.m.; Pearson Rd. Community Center

SOLID WASTE CENTER: 875-5801

Sun., Mon., Fri., and Sat., 7 a.m. - 4:45 p.m.
Closed Tue., Wed., and Thu.

Rines Road Pit — As of April 19, Sat. and Sun., 8 a.m. - 2:45 p.m.

TOWN HALL: 875-2161

Selectmen's Office, Tax Collector, Town Administrator, Town Clerk, and Welfare Officer, 8:30 a.m. - 4:30 p.m.

Building Inspector — 875-5095 for hours and appts.

Parks and Recreation — 875-0109 for info and appts.

Planning Director — 875-5095 for hours and appts.

ORGANIZATIONS:

- Alcoholics Anonymous — Tue., 8 p.m., Alton Bay Comm. Ctr.
- Alton Community Services Prog., Sat., 10 a.m. - 12 noon., 875-2273
- Alton Masonic Lodge #75 — 2nd Thu. except July & Aug., 875-7448
- American Legion — 2nd Mon., 7:30 p.m., Legion Hall, Rte 28
- American Legion Auxiliary — 2nd Mon., 6:30 p.m., Legion Hall
- American Legion Jr. Auxiliary — 1st Tue., 6 p.m., Legion Hall
- Boy Scout Troop 53 — Wed., 6:30 p.m., Central Fire Station
- Cub Scout Pack 53 — Last Wed., 7 p.m., Legion Hall
- 4-H Club, see website <www.alton4H.org>
- Flying Club — 2nd Wed., 6:30 p.m., 859-7900
- Friends of the Gilman Library — 2nd Tue. (in season), Library
- Garden Club — 4th Tue. (in season), Congregational Mtg. House
- Happy Hobby Doll Club — 4th Fri., 7 p.m., 364-7413 for directions
- Historical Society — Watch for announcements of programs, Apr. - Oct.; Nov. - Mar., Museum open by request, 569-2629
- Knights of Columbus — 1st Wed., 7:30 p.m., Pearson Road Community Center
- Lions Club — 1st and 3rd Thu., The American Legion, 6:30 p.m.
- Moms In Touch — Tue., 12:30 p.m., 875-2866
- Mt. Major Snowmobile Club — 2nd Tue., 7 p.m., JP China, Alton Bay; 875-3858 or <info@mountmajorsnowmobileclub.com>
- OES, Warren-Alpha #10, Wolfboro — 3rd Tue, 7:30 p.m., 539-7898
- PTSA. — 3rd Wed., Alton Central School HS Library, 7 p.m.
- Senior Citizens — 2nd Wed., 1 p.m., Pearson Road Community Center
- VFW — 3rd Mon., 7:30 p.m., Pearson Road Community Center

CALL 875-5067 TO UPDATE THE ABOVE LISTINGS

BOARDS AND COMMITTEES

- BOARD OF SELECTMEN — 1st & 3rd Mondays, 6 p.m. (re-plays on Channel 26 following Thurs. and Fri.), Chairman Don Irvin*, call 875-2161 for appointment.
- BUDGET COMMITTEE — 3rd Thursday (twice a week in "budget season"), 7 p.m., Chairman Cydney Johnson, 875-7448*.
- CEMETERY TRUSTEES — Meetings posted at Town Hall and Post Office, Chairman Shirley Lane, 875-5864.
- CONSERVATION COMMISSION — 2nd & 4th Thursdays, 7 p.m., Town Hall, Co-Chairs, Earl Bagley and Justine Gengras, 875-5095.
- FIRE WARDS — 2nd Monday, 7 p.m., Central Fire Station, Chairman Stanley Czech, 875-3815
- GILMAN MUSEUM COMMITTEE — Meets on call, Chairman Bill Crocker, 875-2161.
- LAND CONSERVATION INVESTMENT PROGRAM — Meets on call, Chairman Juliet Peverley, 875-7232.
- LEVEY PARK TRUSTEES — Meet on call, Chairman Dick Jones, 875-3855.
- PARKS AND RECREATION COMMISSION — Meets on call, Chairman William Lionetta, 875-0109.
- PLANNING BOARD — 2nd Monday, 7 p.m., Chairman Tom Varney, call 875-5095 for appointment.
- SCHOOL BOARD — 2nd & 4th Mondays, 6 p.m., Chairman Wayne Fraser, call 875-7890 for appointment.
- SUPERVISORS OF THE CHECKLIST — Meets on call, Chairman MaryBee Longabaugh, 875-5067.
- TRUSTEES OF THE GILMAN LIBRARY — 3rd Tuesday, 4 p.m., Chairman Nancy Jordan, 875-2550.
- TRUSTEES OF TRUST FUNDS — Meets on call, Chairman Joseph R. Houle, 875-7321.
- WATER COMMISSION — 2nd & 4th Wednesday, 9:30 a.m.*, Water Department Office, Chairman Reuben L. Wentworth, 875-4200
- ZONING BOARD OF ADJUSTMENT — 1st Thursday, 7 p.m., Chairman Fran Washburn, 875-5095.

*DENOTES A CHANGE OF INFORMATION
CALL 875-5067 TO UPDATE THE ABOVE LISTINGS

OUR ELECTED OFFICIALS

U.S. SENATE

Judd Gregg, 393 Russell Senate Office Building, Washington DC 20510-2904; Phones: (202) 224-3324, (603) 225-7115, Fax: (202) 224-4952; e-mail: mailbox@gregg.senate.gov

John E. Sununu, C4 Russell Senate Office Building Washington DC 20510; Phones: (202) 224-2841, (603) 625-5585, Fax: (202) 228-4131; e-mail: mailbox@sununu.senate.gov

U.S. HOUSE OF REPRESENTATIVES

Jeb Bradley, 128 Longworth House Office Building, Washington DC 20515; Phones: (202) 225-5456, (603) 641-9536, Fax: (202) 225-5822; web site: www.house.gov/Bradley

N.H. EXECUTIVE COUNCIL

Ray Burton, 271-3632 (Concord), 747-3662 (Woodsville)

N.H. SENATE

Robert Boyce, 875-7371, e-mail: SenatorBoyce@metrocast.net

N.H. HOUSE OF REPRESENTATIVES

Janet Allen, 269-6313

James Pilliod, 524-3047

Gordon Bartlett, 524-6536

David Russell, 364-7449

Laurie Boyce, 875-7371

John Thomas, 528-5112

Charles Clark, 293-9194

Mike Whalley, 875-7266

BELKNAP COUNTY COMMISSIONER

Christopher D. Boothby, 527-5400

BOARD OF SELECTMEN

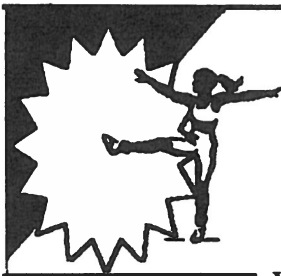
Don Irvin, Chairman, 875-2924

Pat Fuller, 875-5546

Stephan McMahon, 875-6322

William Ryan, 875-2112

James C. Washburn, 364-7413



The Alton Wellness Loft at Alton Family Medicine

Massage Therapy

Wednesdays, by appointment only

SPECIAL PRICE

\$50 (1 HOUR)

Call to make an appointment

269-7891 or 582-0610

Massage Therapy makes a great gift
to give yourself or someone you love.

GIFT CERTIFICATES AVAILABLE

Aerobics - Spinning - Getting Started

Beginner classes for 55+

Strength training - Massage Therapy

**Are you out of shape
or overweight?**

**Do you need to get
moving?**

**Let us help you set
realistic fitness
goals in a setting
where you workout
at your own pace
while having fun**

Whitehouse Painting

Interior & Exterior
Residential and Commercial:
Repaints ~ Log Homes
New Homes
Decks ~ Farm Houses



We also do **Professional
Pressure Washing:**

Houses, Mobile Homes and Parks, Decks,
Vinyl Siding

Driveways, Walkways, and Around Pools

"If it's dirty - we can clean it"

Get your **Free Estimates** Early
Booking Fast!

Fully Insured for Safety



603-875-1727
Ask for Richie
Alton, NH



ALTON STUDENTS CITED FOR HONORS AND CITIZENSHIP

The Alton Central School (ACS) has announced the students in Grades 2 through 8 who have made the Honor Roll and named for Citizenship during the third quarter of the 2002-2003 academic year. High Honors requires a grade of at least 92 in all subjects; Honors, a grade of at least 83; and Citizenship is based on attendance, no discipline, and no failing grades.

Grade 2 Citizenship: Elaine Anderson, Brandon Bastarache, Cortney Carroll, Kristopher Cyr, Kristina Bishop, Heather Boelzner, Desiree Boucher, Dylan Bragg, Thomas Decowski, Taylor Dwyer, Julie Emerson, Chris Ennis, Brandon Frost, Patty Gage, Byran Gavill, Gabrielle Gorman, Andrew Jackson, Kelly Jones, Anna Jortikka, Matthew Joy, MacKenzie Kinnon, Casey Lang, Trevor Liedtke, Danny McKone, Nicole Meuse, Nicole Ouellette, Emily Parker, Tom Pasquariello, Michaela Perrin, Matt Prive, Brandon Ratliff, Alyssa St. Laurent, Serra Shepard, Natalie Stackhouse, Shayna Swezey, Rebecca Tinkham, Chelsea Vernal, Rachel Wilkinson, Bryan Wood, and Cody Yelle.

Grade 3 Citizenship: Kristine Adams, Kirby Beranger, Renae Brunelle, Danielle Burwell, Nicole Dwyer, Cheyanne Harris, Ethan Henderson, Ashley Herrick, Samantha Hillis, Rebecca Krivitsky, Emily Macduff, BJ Morse, Emelie Morton, Breanna Parandes, Jennifer Peloquin, Nicole Perry, Michelle Prior, Martha Rasbridge, Lauren Stearns, Danielle Tidd, and Stephanie Waterman.

Grade 4 High Honors: Stephanie Burke, Spencer Goodsens, and Jesse Neff.

Grade 4 Honors: Brooke Bastarache, Sarah Clifford, Kelsea Dahood, Joshua Dixon-Snell, Carter Golden, Emily Jeffrey, Lindsay Malone, Ashley Mann, Stephanie Pryor, Desiree Reekie, Jake Rochette, Fallon Rouleau, Emily Stone, Kendra Thibeault, Gregory Tinkham, Lauretta Tremblay, and Brittany Woitowitz.

Grade 4 Citizenship: Brooke Bastarache, Danielle Beckett, Marissa Brooks, Stephanie Burke, Sarah Clifford, Kelsea Dahood, Tyler Dessault, Josh Dixon-Snell, Ethan Ehler, Carter Golden, Spencer Goosens, Kelsey Hannafin, Emily Jeffrey, Andrew Kim, Andrew Long, Lindsey Malone, Ashley Mann, Jesse Neff, Stephanie Pryor, Desiree Reekie, Jake Rochette, Fallon Rouleau, Emily Stone, Gregory Tinkham, Lauretta Tremblay, and Brittany Woitowitz.

Grade 5 High Honors: Ashley Barsanti, Megan Hopper, Mary-Margaret Houghton, and Kimberly Sykes.

Grade 5 Honors: Tyler Adabahr, Sarah Adams, Dylan Ball, Kayla Bastarache, Scott Brunelle, Kayla Carr, Allison Cormier, Holly Couture, Lindsey Daniels, Joel Dore, Katlyn Farrior, Kaitlyn Fasulo, Melissa Fortin, Sarah Fraser, Kelsey Hopper, Caitlin Hussey, Brian Jones, Levi Liedtke, Kristi Maciejewski, Kelsey Meyerhoff, Joey Monasky, Stephanie Moulton, Brittany O'Neil, Emily Pellowe, Natalia Ramey, Edward Rogacki, Dack Rouleau, Jaclyn Saalfrank, Shabir Shaikh, and Aaron Wilkinson.

Grade 5 Citizenship: Dylan Ball, Ashley Barsanti, Kayla Bastarache, Roger Boucher, Kayla Carr, Allison Cormier, Anthony Crudale, Lindsey Daniels, Joel Dore, Kaitlyn Fasulo, Melissa Fortin, Sarah Fraser, Megan Hopper, Mary-Margaret Houghton, Jackie LeBlanc, Levi Liedtke, Catherine Martinez, Joey Monasky, Lydia Morton, Stephanie Moulton, Brittany O'Neil, Edward Rogacki, Dack Rouleau,

Jaclyn Saalfrank, Shabir Shaikh, Emily Sharpe, Aisha Sweezy, Kim Sykes, and Zachary Whissel.

Grade 6 High Honors: Shaida Anderson and Kathleen Sykes.

Grade 6 Honors: Vanessa Ainsworth, Casey Beranger, Lyndsay Bishop, Erik Caron, Josh Crosman, Cory Dudman, Megan Farrell, Richard Finethy, Danielle Fortin, Katherine Gage, Kimberly Grant, Andrea Hillsgrove, Kaitlyn LaCourse, Jack LaFreniere, Will Macduff, Vinny Meuse, Stephanie Roy, Danielle Sheehan, and Rick Yeaton.

Grade 6 Citizenship: Vanessa Ainsworth, Shaida Anderson, Alexis Barthel, Casey Beranger, Lyndsay Bishop, Eric Caron, Shanelle Chagnon, Jeffrey Churchill, Emily Donahue, Cory Dudman, Brittany Dwyer, Shannon Eagles, Megan Farrell, Katie Gage, Samantha Golden, Kim Grant, Brendan Hussey, Mike Jensen, Kaitlyn LaCourse, Jack LaFreniere, Will Macduff, Jolene Marshall, Vincent Meuse, Stephanie Roy, Danielle Shehan, Jill Stackhouse, Weston Stewart, Kathy Sykes, Caitlyn Sylvester, Jill Taylor, Baron Vogel, and Rick Yeaton.

Grade 7 High Honors: Tony Castagnaro, Jesse Lane, Wetherly Rouleau, Brianna Tidd, and Kelsie Whitney.

Grade 7 Honors: Ashley Bailey, Stephen (Spike) Biddle, Erin Brackley, Meagan DiVito, Leisha Donnelly, Gary Ford, Ryan Gillan, Chelsea Hawkins, Daniel Hopper, Logan Hopper, Ryan Lougee, Chris (CJ) Moulton, Amanda Pellowe, Robyn Shibley, Stephanie Storey, Jason Tanguay, Krystal Vigue, Casandra Wainwright.

Grade 7 Citizenship: Ashley Bailey, Hayley Barnet, Andrew Barthel, Stephen Biddle, Erin Brackley, Tony Castagnaro, Derek Chase, Amber Couture, Joseph Desbien,

Matt DiVito, Meagan DiVito, Leisha Donnelly, Jacob Dore, Emily Folan, Ryan Gillan, Jessica Harrell, Chelsea Hawkins, Daniel Hopper, Logan Hopper, Tyler Houghton, Travis Hunter, Makina Itchkavich-Levasseur, Ben Jones, Brian Jones, Jeremy Kim, Jesse Lane, Andrew Levasseur, Justin Levesque, Ryan Lougee, Alina Loynd, Karol Mansfield, Chris (CJ) Moulton, Amanda Pellowe, Tara Prescott, Alisa Price, Tony Rogers, Wetherly Rouleau, Justin Sharpe, Robyn Shibley, Justin Smith, Stephanie Storey, Stephen Talon, Jason Tanguay, Chad Tenander, Brianna Tidd, Krystal Virgue, Casandra Wainwright, Kelsie Whitney, Jonathan Yelle, and Jordan Yelle.

Grade 8 High Honors: Bryce St. Cyr.

Grade 8 Honors: Dottie Jean Bailey, Bradley Bissell, Ashley Dwyer, Jane Farrell, Nathan Fogell, Ryan Hussey, Caila Kantar, Joshua Liedke, Melissa Pryor, Rachel Ricker, Sara Scanlon, Jeffrey St. Cyr, Wes Taggett, Kelsey Tinkham, and Ty Tremblay.

Grade 8 Citizenship: Dottie Jean Bailey, Ryan Ball, Brett Belanger, Kyle Belanger, Bradley Bissell, Jennifer Boucher, Megan Burwell, Kris Callahan, Mara Cook-Hamer, Jeremiah Dea, Erin Donnelly, Ashley Dwyer, Jane Farrell, Ashley Finethy, Tyler Fiscus, Nathan Fogell, Charlotte French, Leann Fuller, Nick Gagne, Courtney Goodwin, Kim Hannafin, Ryan Hussey, Dan Jalbert, Caila Kantar, Dan Lampman, Nicholas Lund, Joseph Macdonald, Kelly Main, Courtney Marston, Donny McGee, Juli Minnick, Carmen Niquette, Brandon Parsons, Melissa Pryor, Rachel Ricker, Jacob Ridner, Marc Roy, Sara Scanlon, Robert Scott, Bryce St. Cyr, Jeffrey St. Cyr, George Stevens, Ashley Sweeney, Wesley Taggett, Julie Thoroughgood, Kelsey Tinkham, Ty Tremblay, and Steven Waterman.



WARM UP YOUR HOME WITH ... K-1 KERO MOBILE BLEND
OILS
HOME HEATING OIL
HEATING SYSTEMS INSTALLED

**CARDINAL AND
GLIDDEN OIL CO. INC.**

DELIVERIES IN ALTON
Also in FARMINGTON - UNION - MIDDLETON
MILTON - SANBORNVILLE - MILTON MILLS
NEW DURHAM - ROCHESTER
**24-HOUR BURNER SERVICE
FOR OUR CUSTOMERS ONLY**

**755-3562
1-800-640-3562**

CROWLEY ST., FARMINGTON
MALCOLM GLIDDEN, PRESIDENT CHRISTOPHER GLIDDEN, VICE PRESIDENT
RICHARD CHRISTOFIRE, TREASURER

JP BUILDERS CO. LLC.

Residential & Commercial Construction

ALTON, NH 03809

Fully Insured
Complete Turn-Key Construction
From Design to Occupancy

Custom Homes & Designing
Steel Buildings & Barns
Renovations & Remodeling

Licensed Septic Repairs and Installation
Custom Decks & Sunrooms
Garages, Additions, & Dormers

603-776-9404

CUSTOM CAD SERVICES

Fax us at **603-776-9405**
Or Email us at jpbuid@worldpath.net

LOTS & HOUSES AVAILABLE CALL FOR INFO !!



Over 18yrs. in Business

★ Visit us on the web at <http://www.worldpath.net/~jpbuid/>

★ Authorized Wedgcor dealer

ALTON-NEW DURHAM LIONS CLUB

The April 3 meeting of the Alton-New Durham Lions Club focused on making the club more successful. Lion John Irving reminded the members that this group celebrate their 50th anniversary in 2005. Many members were unaware that the Lions sponsored the first Alton Old Home Week, "Anything Goes." A committee was immediately formed to begin preparations for celebrating this milestone.

Plans are in the works for a "Spouse Nite" and monthly guest speakers. You will also find our members manning the registrations tables for the 2nd Annual Big Lake Half Marathon on May 3 in Alton.

The Alton-New Durham Lions Club can't spell success without "U." If you are interested in joining this community organization, or learning more about Lions, please contact Lion Steve Parker at 875-3117 or the Lions website link at <www.D-D-X.com/Lions>.

NEW AT THE GILMAN LIBRARY

FICTION

- | | |
|----------------------|-------------------------|
| Barnes, Linda | The Big Dig |
| Beaton, M. C. | Death of a Village |
| Brown, Rita Mae | The Tail of the Tip-Off |
| Coonts, Stephen | Liberty |
| Crais, Robert | The Last Detective |
| Deaver, Jeffery | The Vanished Man |
| Fitzgerald, F. Scott | The Great Gatsby |
| Glass, Leslie | Over His Dead Body |
| Hamilton, Denise | Sugar Skull |
| King, Laurie R. | Keeping Watch |
| Margolin, Phillip | Ties That Bind |
| Parker, Robert B. | Back Story |
| Patterson, James | The Jester |

- Roberts, Nora
Steel, Danielle
Woodiwiss, Kathleen E.
LARGE PRINT
Coulter, Catherine
James, P. D.
Siddons, Anne Rivers
Wilson, Susan
NONFICTION
Bryson, Bill

Greene, Bob

- Holzer, Hans
Savage, Michael
BIOGRAPHY
Foster, Lawrence G.

REFERENCE

J. K. Lasser's Your Income Tax

JUVENILE

Hann, Judith How Science Works

VIDEO CASSETTES

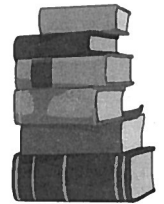
- Being Human
Ma & Pa Kettle On Vacation
The Man In The Iron Mask
The Mask Of Zorro
My Big Fat Greek Wedding
Water World
White Squall

- Heaven And Earth
Dating Game
The Reluctant Suitor

- The Penwyth Curse
A Certain Justice
Peachtree Road
The Fortune Teller's Daughter

- The Lost Continent & Neither Here
Nor There
The Get With The Program! Guide to
Good Eating
Ghosts of New England
The Savage Nation

Robert Wood Johnson, The
Gentleman Rebel



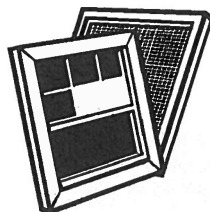
SEE THE COMPLETE LISTING
AVAILABLE AT THE LIBRARY

~Excavation~ **L.L. BRASWELL** *~Building~*
CONTRACTOR

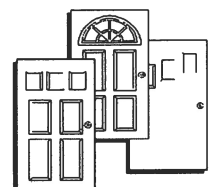
Land Clearing, Drainage, Roadwork. Structural Steel Building & Bridges.
Septic System Installation & Repairs. Wood Frame Homes, Garages, Pole Barns.

Equipment Rental w/Operator • Concrete Foundations

Gravel, Sand, Stone, Loam, Mulch **ALTON NH 03809 1-603-875-5315**



**viscariello
Home
Improvement**



Vinyl Replacement Windows

Entry Doors, Storm Doors, & Storm windows

Shower Doors, Mirrors, Additions, Decks, Sheds, Garages, Patio Rooms, Screen Rooms

Vinyl & Wood Siding, Storm Repairs, Seasonal Maintenance & Property Checks

Fully insured and estimates are free

875-7608 <http://viscariellohome.tripod.com>

ACS STUDENTS IN MATH CONTEST

By Charles Rando, ACS Math Teacher

March 20 was the day 52 schools in New Hampshire participated in the 31st Annual State Mathematics Contest held at Plymouth State College. Each school formed one ten-member team to represent their school. The teams met with other students from throughout the state for a day of challenging, competitive mathematics exercises in six different categories. Alton Central School (ACS) sent Seniors: Scott Baumgartner, Dennis Callahan, Terese Hopper, and Dave Snell; Juniors: Rob Gallentine and Meredith Roy; Sophomores: Christina Jamieson and Jon Vogel; and Freshmen: Jamie Bilodeau and Luke LaFreniere.

The six categories were Recreational Mathematics, Algebra I, Geometry, Algebra 2, Advanced Mathematics, and a team category. Each 12-minute category consisted of three questions of equal value taken by six members from each team. The students worked independently in each of the categories.

All the students showed great improvement over their performance from last year. The team's high scorer was junior, Meredith Roy, with a perfect score in the "Recreational Math" category, a record for Alton. The Alton School Board and Don Parks, Superintendent of Schools, presented Meredith with an award from the NH Council of Teachers of Mathematics on April 14 for her perfect score. Congratulations to all participants for representing Alton Central School.

BCCD PLANT SALE ON MAY 2

Attention all gardeners and landowners! The Belknap County Conservation District (BCCD) will be holding its Plant Sale fund-raiser on Friday, May 2, from 5 - 7 p.m. at the Gilmanton Iron Works Fire Station and on Saturday, May 3, from 11 a.m. to 1 p.m. at the Longridge Farm in Meredith. There are many plants still available for purchase including a surprise shipment of butterfly bush, river birch, evergreens, fruit trees, white crabapples, ground covers, lilacs, wildlife shrubs, flowering hedge plants, flowers to attract hummingbirds and butterflies, and plants for stream and lake side stabilization.

BCCD will also be holding a tree and shrub planting workshop on Saturday, May 3, rain or shine, outdoors at Longridge Farm in Meredith from 9 to 11 a.m. This workshop is for anyone interested in planting blueberries, raspberries, strawberries, Christmas trees, fruit trees, hedges, evergreen or hardwood bareroot plants. Please wear boots or sturdy shoes and bring lots of questions. Please register for this workshop by Wednesday, April 30, by calling 527-5880.

If you have any questions, need directions to the sale sites, or would like to register for the planting workshop please call the BCCD at 527-5880.

All programs and services of the BCCD are offered without regard to race, color, national origin, religion, disability, sex, political belief, age, marital or familial status.

PRIMERICA FINANCIAL SERVICES HOME MORTGAGES INC.

Looking for A Way Out of Debt?

Let us show you how a \$.M.A.R.T. Loan can help!

We'll help you turn that pile of monthly bills into one affordable monthly payment by using the equity in your home.

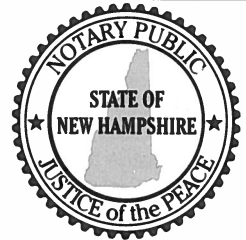
For more information, contact:

Scott Carpenter
127 Rt. 28
Ossipee, NH 03864
1-800-278-1726 ext. 23

EQUAL HOUSING OPPORTUNITY
Lender is an affiliate of
Primerica Financial Services Home Mortgage, Inc.
Loans secured by residential real estate

Mary Jane Dascoli

Notary Public
Justice of the Peace



Alton Fire/Rescue Dept.
Secretary/EMT

Cell: (603) 387-9242
Home: (603) 776-5971

Farmer's Choice Greenhouse

The Very Best Flowers at GREAT PRICES



GREENHOUSE NOW OPEN

Come visit and see our exceptional
Hanging Baskets ~ Patio Accent Pots
Annuals, Perennials, and Vegetable Plants
Featuring Terra Cotta made in New Hampshire

GREENHOUSE

SPRING HOURS ~ 10:00 AM to 6 PM DAILY

One Homestead Place (next to McDonalds) Alton Traffic Circle, Alton, N. H.

603-875-2556

ANNUALS
PERENNIALS
PATIO POTS
TERRA COTTA

How Many People Do You See for All Your Financial Needs?

You only need one.

At Edward Jones, you'll get personal service from one investment representative who can help you with all your financial needs.

- Stocks, bonds, mutual funds, CDs, Treasury bills
- Check-writing on money market mutual funds*
- VISA debit card with ATM access for cash
- Personal Line of Credit**
- Safekeeping of financial assets
- Direct deposit and money transfer services

* The rate on the money market fund will fluctuate and may be subject to state and local taxes and, depending on your tax status, the alternative minimum tax. An investment in the fund is not insured or guaranteed by the Federal Deposit Insurance Corporation or any other government agency. Although the Fund seeks to preserve the value of your investment at \$1.00 per share, it is possible to lose money by investing in the Fund. For more complete information on our money market funds, please contact your Edward Jones investment representative for a prospectus or visit our Website at: www.edwardjones.com. Please read the prospectus carefully before you invest.

** Our Line of Credit is a margin account. Borrowing against securities has its risks and is not appropriate for everyone. If the value of your collateral declines, you may be required to deposit cash or additional securities, or the securities in your account may be sold to meet the margin call.

Call or stop by today.

Michael Davignon

Main Street

Alton, NH 03809

603-875-0774

www.edwardjones.com

Edward Jones®

Serving Individual Investors Since 1871

going stir crazy, but there are sounds the ship makes that sound like chirping crickets on a summer night by the lake. I listen to the catapults launching birds and many hours later I hear us catch them. But I know nothing of their missions. My small pox still itches. Wish I had never received it. God I wish I could go home, jump on the next "14," and land in Manchester. I long for my children's laughter and the warm embraces of home.

I fear not for me; I am safe. I worry for my brother with so much going on over there. In my heart I know he'll be okay but with the unknowing comes fear, with fear the expectations of the worst. I pray for the best. Will this be WW III or just a small war? Sometimes I cry. What will happen? All the people back home counting on us to keep them safe. I pray that everything will work out.

A wave hit the ship the other night. And unfortunately no one will ever understand its intensity and just how large it was. I wasn't there...I had an advancement exam the next day. People were hurt. The elevator was down. Chains and equipment lost. Machines broken. Nobody went overboard, thank heavens.

Things are so weird now. Yet being so far away from all the action it seems unreal — like a movie. But it's not. This is why I am here. To protect my family and friends and even those I don't know. And I am thankful that people are thinking of me and care about me just as much.

I never understood so much until I got here. Mrs. Ballentine's grade 7 class wrote me. It made me cry. I want all their dreams to come true. And that some human isn't going to try and play God and take them or anything away from children.

My thoughts are deep these days. I love more and cherish more. I long to be home. But there is a war to be fought and won. And even if all I do is get birds to the roof, I am contributing.

I thank my family for the strength they have given me, for my wisdom, and for the love. I'd be lost without them. I pray they sleep peacefully with the sweetest of dreams. I pray that evil never enters in upon my children. I pray my brother, Howie, stays strong and "gives them hell."

I hope my family knows I love them and that I think of them always. I hope the town I come from never has to see what I and many others have seen. It's got to be beautiful there now; it's still cold here. To everyone there I send my love!

To the Main Street, publish this as you see fit. This is what we are all thinking out here. And most of us wish we were there because we are getting angry that we can't do more. But, please, if nothing else, let everyone know that no matter what happens, I love them and I am coming home with my brother safe and sound.

Thank you for all you are doing for Howie and I.

CENTRAL NEW HAMPSHIRE SEAMLESS GUTTERS & HOME REMODELING



Seamless Aluminum Rain Gutters

Any Length ~ Many Colors

Gutter Cleaning Also Available

Vinyl Siding ~ Windows ~ Doors ~ Carpentry and

Decks

FREE ESTIMATES

AMERICAN LEGION FAMILY MAKING A DIFFERENCE

By Ray Nadeau, Post Commander

A couple of local residents recently asked just what does the American Legion family do for the community — and more specifically, do they make a difference?

What we refer to as the Alton American Legion family is in reality four groups: American Legion, Sons of the American Legion, American Legion Sr. Auxiliary and the American Legion Jr. Auxiliary. Total membership has just exceeded 600.

We certainly enjoy the comradeship that comes with belonging to an organization dedicated to American ideals, and yes, we enjoy the social aspects of the membership. But we exist for and take pride in a whole lot more.

We are a non-profit organization that offers support to national, state, and local causes. The real purpose of this article is to touch on local support efforts only. We donate time, money, and make our facility available for use by children's groups, veterans groups, elderly groups, the Lions, Children's Miracle Network, Alton Special Olympics, VNA, United Way, Easter Seals, National Federation of the Blind, and American Legion family and community members in special circumstances.

In the last year we started our Sunday breakfasts as a new fund raiser. During that time we have donated in excess of \$7,000. to local groups such as Senior Citizens, various high school functions and activities, Boy Scouts, Girl Scouts, and Cub Scouts just to name a few. We then began the drive to raise \$12,000. for band uniforms for the new high school. We have currently raised over \$8,000. toward that goal. We provide scholarships to local graduating seniors in excess of

\$5,000 annually.

Thanksgiving Day we served and delivered in excess of 100 holiday meals. We had over 100 children for goodies and toys from Santa at our Children's Christmas Party. We adopt between 25 and 40 local needy families — most with children — for holiday gifts and food at Christmas each year. In addition, we provide assistance to local families in need throughout the year.

We would like to thank the residents and businesses of Alton and surrounding communities for their support of our activities and fund raisers.

So, in response to the question, "Does the American Legion family in Alton make a difference? What would be your answer?"

DOG LICENSES

By Lisa Waterman, Town Clerk

To all dog owners who have not yet licensed your dogs, you will be fined \$1 per month after May 31. Also, you will be in violation of RSA 466:1, and a civil forfeiture will be issued carrying a fine of \$25. Don't add to the cost of dog registration; come in soon. License fees are:

Male/Female	\$10.00	
Neutered/Spayed	7.50	
1st Animal of Sr. Citizen over 65		2.00

You may renew your dog license by mail. We **require** a self-addressed, stamped envelope, updated rabies certificate, neutering/spayed certificate, if applicable, and a check made payable to Town of Alton for the appropriate fee. The certificates will be returned to you with the new license.

Please call us at 875-2101 if you have any questions or if you *no longer have your dog*. Our office hours are 8:30 a.m. - 4:30 p.m., Monday - Friday. Thank you.



**Free coffee.
Everlasting life.
Yes, membership
has its privileges.**

*If you really want to belong to something special,
become a regular at our church.
You'll receive the kind of perks that last a lifetime.
Or even longer.*

The Christian Churches of Alton
The Bay Church ~ The Community Church ~ St. Joan of Arc
(see Information Center for worship times)

Thinking of selling your home? Prudential Spencer Hughes Real Estate & Housemaster®

A National Home Inspection Franchise

Have joined hands in offering you
A Pre Home Inspection at our expense!

Why pre inspect?

Because it makes sense!

Call today and we'll tell you why we are willing to spend our money
up front for You and Your home.

Call Donna or John Tibbs REALTORS®

Alton's Top Producing Husband & wife team

603-875-2020



Prudential
Spencer-Hughes
Real Estate

WINTER ATHLETIC AWARDS AT ACS

By ACS Athletic Media Department

The Alton Central School (ACS) recently held their Winter Sports Banquet where many awards were given.

Coach Jim LaFreniere, Boy's Basketball, awarded the MVP trophy to senior Dave Snell who was also named to the Granite State Conference All Star Team. The Most Improved Player award was awarded to seniors Scott Baumgartner and Micah Jackson. Coach LaFreniere honored Mike Friedman with the Coach's award.

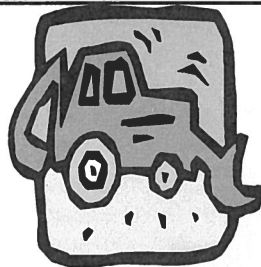
Coach Mark Anthony, Girl's Basketball, awarded the MVP trophy to senior Terese Hopper who had a great season which included scoring her 1000th point and making the Granite State Conference South Player of the Year for the second straight season. Junior Meredith Roy was awarded Player of the Year for her offense from the point guard position, as well as being named Granite State Conference Second Team. The Outstanding Defense Player Award was given to sophomore Heather Hammes for shutting down the other teams top offensive player. The Most Versatile Player Award went to junior Lindsay Kenerson for her contributions to the team.

Mark Murphy, Alton's Ski Team Coach, named Robyn Shibley, grade 7, as Top Female Skier. She was also selected to the Granite State Conference All-Conference team. The Coach's Awards were given to seniors, Hilary Ballentine and Kendra Brown. The Best Male Skier was sophomore, Cory Damm.



HIGHWAY HAPPENINGS

By Ken Roberts
Highway Agent



WHAT A WINTER!

We have been getting ready for spring and it still won't come!!!

We have been raking the dirt roads, keeping up with the frost that is slowly but surely drying up. In the ten years I have been Highway Agent, this has been our worst mud season. The frost was 4 1/2- to 5-foot deep. It will take until the end of May to get all the frost out.

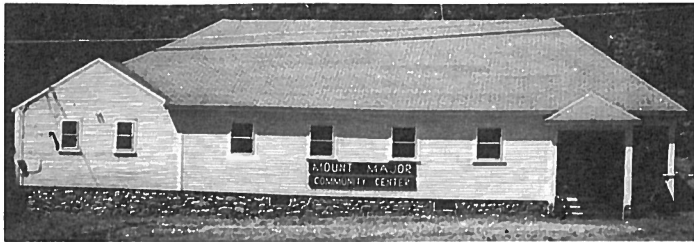
The finishing touches on Alton Mountain Road and construction on Old Wolfeboro Road will be starting soon. I would like to thank you now for your patience and understanding while roads are under construction.

Let's all have a happy spring. Just remember, if you see any problems with our roads, please call us at 875-6808. With 85 miles of roads sometimes it's hard to see it all. Your help is greatly appreciated.

Please check your driveway culverts to make sure they are working properly.

Public Safety Is Our Number One Concern

**Lake Winnepesaukee, Alton Bay
Waterfront Cottage, 2 Bedrooms
Available for Weekly Rental, with Dock
Call 603-537-9493**



MOUNT MAJOR COMMUNITY CENTER

By Kitty Croes

We will be opening our doors soon for community events and rental functions. The center is available from May through October, temperature permitting. The hall is perfect for small or large family gatherings, reunions, showers, anniversary parties, wedding receptions, etc. It is also suitable for business meetings, sports banquets, craft fairs, fitness groups, music recitals, and student clubs — the possibilities are endless.

The Mount Major Community Center is a quaint, one-story white clapboard building. The building was originally constructed as a one-room schoolhouse but has been added to and modernized over the years. For many years it housed the West Alton Grange. The building now contains a function hall with rest rooms and capacity to seat 125 people. The kitchen is equipped with refrigerator, gas stove, microwave, dishes, and utensils.

The Community Center is located on Route 11 just west of the junction of Routes 11 and 11A in West Alton. It is adjacent to the West Alton Fire Station, and the two properties share parking facilities. A convenient footpath connects the two. Please arrange for a visit to our building as last year the floor was completely refinished. For reservations, a showing, or additional information, please contact me at 875-7165 or

<croesn@worldpath.net> for e-mail.

Rental Fees: \$25 with no kitchen; \$100 with kitchen and 50 people; \$150 with kitchen and over 50 people.

AMERICAN LEGION EVENTS

By Ray Nadeau, Post Commander

Here are some events which may interest Alton residents.

Flags

Flag Day is June 14. There are a lot of damaged and/or faded American flags in the Alton area. We distributed more than 500 since 09-11-01 alone. All damaged American flags must be properly destroyed. Please drop off your torn, faded flags to the American Legion building, and on Flag Day, June 14, they will be destroyed in our annual Flag Day ceremony.

Band Uniforms

We now have \$8,100 in the fund for new band uniforms for our new high school! As always, please mail your contributions to the American Legion, P. O. Box 814, Alton, NH 03809 or deposit them directly to the High School Band Uniform account at the Bank of NH on Main Street, Alton.

We'd like to thank the Bank of New Hampshire and Mr. and Mrs. Richard Jones of Wolfeboro, for their generous donations.

Sunday Breakfasts

We are still having our breakfasts from 8 a.m. to 12 noon every Sunday with Chef Andy Schofield serving. Local organizations have sponsored breakfasts up to July. The price is \$7 for all you can eat and includes made to order eggs and omelets, as well as ham, bacon, sausage, home fries, beans, biscuits and gravy, pancakes, french toast, juice, coffee, milk, tea, and chocolate. Don't miss this great meal! Our kitchen is also open on Thursday evenings from 3 to 7 p.m. and Friday and Saturday from 4 to 8 p.m. You'll love the food.



8.72%

1st YEAR YIELD

Excellent for 401K rollovers
or other qualified
pension funds.

The Bonus 5SM index annuity

- Market-type participation without risk.
- Principal guaranteed with tax deferred growth.
- 5% bonus on each deposit for the first 10 years.

DAK

FINANCIAL

call DAK at
1-800-854-5630
1-800 DAK-5350

11 Main Street, Alton, New Hampshire

Bonus 5 is issued on Form AC082A (group certificate) or AS082A (individual contract) or appropriate state variation. Issued by Midland National Life Insurance Company, Des Moines, Iowa. These products may not be approved in all states. 8.72 First-year yield reflects a 5% premium bonus plus a 3.72% Fixed rate. This yield applies only to premiums in the fixed account. Withdrawals may be taxable. Withdrawals prior to age 59 1/2 may result in IRS penalties. 8175Y Prt. 6/02

MIDLAND NATIONAL
Life Insurance Company • Annuity Division
4601 Westown Parkway • Suite 300 • West Des Moines, IA 50266

Dave's Repair of Alton
Across from Bank of New Hampshire

Diagnostics and Maintenance
Foreign and Domestic

Open Saturdays 'til Noon

- Oil Change \$23.00
- Tune Up varies - see me for a quote
- State Inspection \$20.00
- Trans Service \$72.00
- Radiator Service \$34.00
- Retrieve Codes \$10.00

Dave Turner
875-8300

How do you *do*?

Whether you do it yourself or do it for others - you need the materials and expertise to make your outdoor project a success. It's what we do and at great prices! So, if you want to pick up, need delivery or want it done for you - give us a call. Or stop by, we're only about 15 minutes south of the Alton Circle on Route 28.

BARK MULCH

100% Bark with NO Stretch or Waste Material

LOAM

Rich, Screened Clear and Ready to Grow

ORGANIC COMPOST

All Natural Amendments to Enrich Your Soil

AGGREGATES

Foundations like Sand, Stone Dust and Gravel

BRICK / BLOCK / STONE

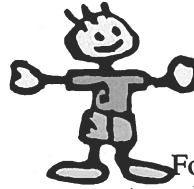
Everything to Build Walls, Pave Walks, Lay Steps



Landscape Supply

Wholesale/Retail - Route 28 - Chichester

603/435-6370



FOR THE FUN OF IT
By Kellie Troendle, CPRP
Parks and Recreation Director

ALTON...

For more information on any of our programs or events please contact us at: 875-0109 or altonparks@metrocast.net. Check out our web site under construction: altonparksandrecreation.com. Your suggestions and feedback are welcome.

Adult Co-Ed Softball League

The Parks and Recreation Department's Co-Ed Adult Softball League will have a team captains meeting on Thursday, May 15, at 6:30 p.m. at the Alton Town Hall. All team rosters and registration fees are due. If you would like to be placed on a team, please call 875-0109 and if there is an open slot, we will let you know. The registration fee is \$20. Games will be played in Alton and New Durham. The season is scheduled to begin on June 9.

Country Line Dancing Lessons
for Adults of All Ages

Please join us for fun and exciting Country Line Dancing lessons. We meet every Thursday from 1:30 - 3:30 p.m. at the Alton Bay Community Center and learn new dances every week. Beginners are welcome. The program fee is \$3 for the season and all proceeds benefit our Senior Bingo program. Meet new people and learn a new form of exercise.

Alton Bay Bandstand Improvements

The Alton Parks and Recreation Department would like to recognize and thank Brad Hunter of Hunter Homes for volunteering his time, materials, and labor in replacing the roof on the Alton Bay Water Bandstand. Mr. Hunter was able to perfectly match the roof on top of the Water Bandstand with the roof on the Alton Bay Community Center. The department would also like to thank volunteer Tim Kinnon of Kinnon Electric for donating and installing the light fixture and supplies to light our American Flag at night. The bandstand is a very unique attraction in Alton Bay, and the Parks and Recreation Department sincerely appreciates the volunteer efforts of the local contractors who repaired and upgraded the famous landmark.

Liberty Tree Park Improvements
Eagle Scout Project

The recreation area located at Liberty Tree Park will be improved and developed as part of an Eagle Scout Project to be coordinated by Ben King. Park improvements include: raking loam and planting grass for a park setting, building and developing a trail, new park signs, trash containers, and a picnic table. We are anticipating closing the park in May and June for construction. Please enjoy the tennis courts by using the west entrance gate closest to the river. The Parks and Recreation Department is excited to be a part of this Eagle Scout project, and we appreciate your cooperation and patience through the construction process.

Community Youth Activities
Committee Update

The Community Youth Activities Committee, together with the Parks and Recreation Department, sponsored a Movie Night and Ice Cream Social on April 12 at the Pearson Road Community Center. The event was a success and included cooperative games, music, ice cream, and a great movie. A special thank you to the volunteers and supporters: Dick and Carol Wallace, Kitty Croes, Kendra Kantar, David Shaw, youth volunteers, Alton Central School, and Alton Video.

CLASSIFIED ADS

Alton residents may place classified ads in any issue of Main Street. As a public service ads are primarily for *noncommercial* private individuals who have items for sale (except real estate for sale or rent), items or services wanted, free items, personals, or help wanted notices. The rate is \$1 for each noncommercial ad of 35 words or less. Each additional 35 words costs \$1. (There is no charge for "Cards of Thanks" or ads under the "Free" and "Ride Sharing" classifications.) The rate for commercial ads is \$12.50 per column inch. Main Street reserves the right to refuse any ad, or edit it for length/style. Ads must be submitted with payment to Post Office Box 210, Alton Bay 03810, by the 15th of the month preceding publication. Submissions may also be placed in the Main Street box at the Alton branch of the Bank of New Hampshire. **Ads must contain a phone number.**

FOR SALE

1994 MERCURY MARQUIS, estate sale, only 37,000 miles, great condition, all options, \$6,800. 569-2938.

SUNLIGHT CAMPER, 14', late model, excellent condition, not a pop-up, sleeps 4, full awning, sink, stove, furnace, refrigerator, toilet, new upholstery, \$1,995. 776-7931.

FORD TRACTORS, 641 Workmaster, 1953 Golden Jubilee, Dexter 3 cyl. Diesel, Fordson Dexter Gas (parts), Massey Harris Pony, call for details. 569-4200.

WANTED

CHILD CARE, mother of two is looking for a dependable and reliable high school student to care for her children this summer for two, sometimes three, days a week; must have references. Please call 875-4529.

FREE

DUNKING BOOTH, attached to trailer, needs some work. Please call 875-3591.

HELP WANTED**CUSTODIAN****DEPARTMENT PARKS & RECREATION**

Part-time, 30 hours per week, year round, weekends required. Duties include: trash removal; cleaning town buildings, offices, and public restrooms; floor maintenance and shoveling snow.

Valid NH Driver's License. Background check and physical exam required. Applications available at A.V.A.S. Public Park, 875-0109. Position will remain open until filled. EOE.

LUNCH AT THE SENIOR CENTER

Program is open to all age 60 and older. Meals served Monday-Friday, 12 noon. Suggested \$2 donation. 875-7102.


April 28 - May 2: Mon., Baked Ham or Turkey; Tue., Beef Stew; Wed., Baked Chicken/Gravy; Thu., Meat Loaf/Onion Gravy; Fri., Pot Roast/Brown Gravy.

April 5 - 9: Mon., Pork Choppette/Gravy; Tue., Cod Filet; Wed., Stuffed Manicotti; Thu., Mother's Day Dinner, Stuffed Chicken/Gravy; Fri., Meat Loaf/Mushroom Gravy.

April 12 - 16: Mon., Swedish Meatballs/Gravy; Tue., Veal Parmesean/Sauce; Wed., BBQ Chicken Legs; Thu., Pork Loin/Gravy; Fri., Stuffed Peppers.

April 19 - 23: Mon., Breaded Chicken Cutlet/Gravy; Tue., Baked Ham or Turkey; Wed., Batter Dipped Fish; Thu., Vegetable/Chicken Primavera; Fri., Yankee Pot Roast/Gravy.


April 26 - 30: Mon., Closed, Memorial Day; Tue., Sloppy Joes or Hamburger; Wed., Macaroni/Cheese; Thu., Shepherds Pie; Fri., Memorial Day Picnic Lunch, Sliced Turkey.

CARDS OF THANKS


We would like to thank Russ Sample, the Alton, Gilford, Belmont, Gilmanton, Wolfeboro, Laconia, New Durham, Farmington, Barnstead, and Strafford Fire Departments for their great efforts in fighting our house fire on March 5. We'd also like to thank the Alton police, the Red Cross, and the many, many people, family, and friends who came to our aid and for their generosity.

/s/George and Joanne Munro, Denise Croteau, and Danielle Sheehan

To the Town of Alton Employees



I would like to thank everyone for the wonderful going-away party you gave me. I truly enjoyed working with ALL of you. I am grateful for all the friends I have made while working for the town. You all work very hard to do the best you can for the town. Paulette, we accomplished a lot working together, and I know you will do well as new challenges are presented to you.

/s/Martha L. Chase

**IN Main Street
FIFTEEN YEARS AGO . . .**

. . . Marion and Leo MacDonald were honored at a surprise testimonial dinner at the Foxy Johnnie Restaurant . . . new parking regulations and boat launch fees were adopted by the Selectmen to alleviate car and trailer congestion in Alton Bay . . . the Senior Class held its annual spaghetti/lasagna feast to raise funds for a chemical-free trip to Hershey Park in Pennsylvania . . . the Alton School began a six-week period of penny collecting to buy new playground equipment.

TEN YEARS AGO . . .

. . . Richard Frohock, Legionnaire of the Year, served as Grand Marshal of the Memorial Day Parade . . . Glen McLean resigned after serving Alton as the Town Planner for four years . . . the Alton Volunteer Ambulance Service had an open house, offering tours of their facility, blood pressure checks, and refreshments . . . the Young Astronauts Chapter from the Alton Central School had a display at the Laconia Airport Aviation Day.

FIVE YEARS AGO . . .

. . . Residents saw the "Brontosaurus" in action, chomping up the roadside debris left behind from the January "Ice Storm of the Century" . . . Memorial Day exercises were planned to include American Legion Post 72, American Legion Auxiliary, Sons of the American Legion, the Junior Auxiliary, and the Alton-Alton Bay VFW Post 11163 . . . students from grade 8 of Alton Central School helped move books back into the Gilman Library after the expansion was completed.

"ASK THE EXPERTS"**Free Panel Discussion on Alternative Health Care**

On Tuesday, May 20, from 7 - 9 p.m. at the Wolfeboro Public Library, Healing Frontiers (569-6318) and The Evergrain Health Food Store (569-4002) will hold its second panel discussion. Join us for an enlightening, informative evening to explore how alternative health care can help you maintain or regain optimum health. The audience is encouraged to bring their health-related questions for the panel experts to answer. Light healthy refreshments will be served.



LEADERS IN PREVENTION

By **Kitty Croes, ACS Middle School**
Guidance Counselor

Through March 20 to 23 eight Alton Central School (ACS) students and Guidance Councilor, Kitty Croes,

participated in New Hampshire Leaders In Prevention (L.I.P.) Program at the New Hampshire National Guard. The students who engaged in the L.I.P. program were 7th graders, Dan Hopper, Jonathan Yelle, Kelsie Whitney, Brianna Tidd, and 8th graders, Kris Callahan, Nate Fogell, Jane Farrell, and Rachael Ricker. They can be seen in the above photo (left to right): Farrell, Whitney, Hopper, Fogell, Yelle, Callahan, Ricker, Counselor Croes, and Tidd.

The L.I.P. program is for students to partake in the activities offered at the Teen Institute and take what they've learned back to their community and apply it. The activities portrayed at the program involved teaching about better things to do instead of doing drugs, ways to improve your community, and working together. The Alton student participants applied what they learned and formed a group called C.O.P. (Community Outreach Program). The students are planning an assembly to vocalize their objectives to their fellow students. The L.I.P. program was an excellent experience for the students of ACS. We encourage anyone who has an opportunity to participate to do so.

Lyndon E. Avery
Proprietor

NH Licensed
Auto Dealer



Avery's Garage
"Quality Service is our Specialty"

3 Pearson Road
Alton, NH 03809

Tel. (603) 875-3054

Merrymeeting River



*"a little Community
tucked in the Pines
by the River"*

Don, Sandy, Jean & Eric for 25 years
Route 11 East, Alton 859-4811

ANYTHING WATER - HUPP'S

If it has **anything** to do with water,
Call our **Licensed/Insured Water Tech @ 875-6969,**
269-6999 or 1-877-269-6999
Spring Special: Mention this ad and receive
\$50.00 off any Water Softener or \$25.00
off any Sump Pump. The Hupp's

Barbara's Little Beauty Shop



Family Hair Care
Senior Citizens Discounts
OPEN TUES., THURS., AND FRI.

N. Barnstead Rd.
Ctr. Barnstead, NH

776-3920
Barbara Elliott



Main Street

PO Box 210, Alton Bay, New Hampshire 03810

PRSR STD
U.S. Postage
PAID
Permit No.2
Alton Bay, NH

**CAR-RT SORT
POSTAL CUSTOMER
OR CURRENT RESIDENT**