



Main Street

Volume VIII Number 1

January, 1992

Alton, New Hampshire

BUDGET HEARINGS OFFER OPPORTUNITY TO INFLUENCE 1992 TAX RATE

Public hearings on the Town's 1992 budget and the 1992-93 School budget have been scheduled twice in each case to allow flexibility for public attendance.....a weekday night or a Saturday afternoon. Take your choice!

The Town budget will be reviewed at 7p.m. on Thursday, January 16, and again on Saturday, January 18, at 1p.m. Both sessions will be held at the Alton Bay Community Center.

The School budget will be reviewed at 7p.m. on Thursday, January 23, and again on Saturday, January 25, at 1p.m. Both these sessions will be held in the Music Recital Room at Alton Central School.

The Budget Committee will conduct all sessions under Chairman Ruth Messier.

HEARINGS QUESTIONS AND ANSWERS

Q. Why should anyone attend?

A. The voters carefully elected this Budget Committee to look out for their interests and the best possible service for the Town for the dollars involved. The Public Hearing is a report on that mission and changes can be made as a result of public input at each hearing.

Q. But isn't the budget adopted at the Annual Town Meeting on March 11? And at the Annual School District Meeting on March 14?

A. Yes, it is. But the length of the agenda doesn't allow for a completely detailed review of every item. The Public Hearing is the place to get the fine detail.

Q. What about the County Budget? When do we get to vote on that?

A. Unfortunately, we don't get to vote on that. Our share (about 12.5% of the total) gets "assigned" to Alton as a result of the action of the County Delegation (Belknap County State Representatives). By state law they adopt the budget and tax the several towns for their share, based on primarily the total land and property values in each town.

Q. How can we influence the County Delegation?

A. Two ways. Make your interest and concerns known to our two representatives: Alice Ziegler and Pete Shibley. And watch the Evening Citizen for the schedule of public hearings at the County Court House to attend those sessions.

INFORMATION NIGHT ON NEW GRADING POLICY

An information night to discuss grading changes for grades 4-12 at Alton Central School will be held Tuesday, January 7, in the Elementary Resource Center. The Grading Committee and members of the School administration will be present to answer questions.



SANTA'S FROSTY FOLLIES

Members of the Kindergarten presented "Rudolph, the Red-Nosed Reindeer" during the Annual Elementary Christmas Concert last month at the Alton Central School.

FILING PERIOD BEGINS JANUARY 22 FOR TOWN AND SCHOOL POSTS

The filing period for the town and school elections on March 10 opens Wednesday, January 22, and ends 5p.m. on Friday, January 31.

Positions available include:

- One Selectman for Three Years
- One Selectman for One Year
- One Trustee of Trust Funds for Three Years
- One Library Trustee for Three Years
- One Fire Ward for Three Years
- One Water Commissioner for Three Years
- One Water Commissioner for One Year
- Three Budget Committee Members for Three Years
- Two Planning Board Members for Three Years
- One Planning Board Member for One Year
- One Cemetery Trustee for Three Years
- One Moderator for Two Years
- One Supervisor of the Checklist for Six Years
- Two School Board Members for Three Years
- One School Treasurer for One Year
- One School Clerk for One Year
- One School Moderator for One Year

Filing takes place in the Town Clerk's office between the hours of 8:30a.m. and 4:30p.m. There is a filing fee of \$1 for any office that receives compensation.

Only registered voters may file. Voter registration for new voters will be held Tuesday, January 21, from 7 to 9p.m.

PRODUCT LABELS BENEFIT ALTON CENTRAL SCHOOL

Each year, the Alton Central School participates in a product label collection to earn various academic and audio-visual materials for classroom use.

As an incentive, the students receive a free book from the Annual Book Fair if they contribute at least 150 labels. Labels may be contributed for a particular student by stapling them in packets of 10 with the student's name and grade on the back of the last label.

The labels may be delivered to the School or the Alton branches of either the Farmington National Bank or First NH Bank.

Clip and post the following list as a reminder:

The FRONT PANEL from Campbell's soups, juice or beans; Prego spaghetti sauce; Franco-American spaghetti or gravy; V-8 juice cans; and Swanson canned foods.

The UPC SYMBOL from V-8 juice boxes; Swanson frozen foods; and Pepperidge Farm bakery, frozen foods, crackers, or cookies.

The SAFETY SEAL from Marie's salad dressings.

The LID from Vlastic pickles.

The QUALITY PLEDGE from Mrs. Paul's frozen foods.

Don't assume everyone is a Sunday driver. It might be a Friday driver still looking for a place to park.

ALTON PRINTING

Church Street, Alton, N.H.

Wedding Invitations • Carbonless Forms
Advertising Specialties • Business Cards
Letterheads • Envelopes • Sales Slips
Booklets • Calendars

875-2197

SHIBLEY'S

HARD and SOFT ICE CREAM
YOGURT and VITARI (non-dairy)



- NO Cholesterol Frying Oil
- Fresh Ground Hamburg
- Fried Chicken
- Lobster Roll
- Pizza, Fried Dough -
- and a Whole Lot More

Come by Land or Lake
Call in Orders Welcome

875-6611
OPEN ALL YEAR
Daily 11 AM - 8 PM
ROUTE 11, ALTON BAY, NH

Main Street's ICE-OUT CONTEST

DINNER FOR TWO IF YOUR GUESS COMES TRUE

The Dockside Restaurant will offer dinner for two, compliments of Linda Daggett and staff, for whoever guesses closest to the date and time of the 1992 Ice-Out.

Ice-Out is defined as that moment when the M/S Mount Washington can successfully reach each of its ports without being obstructed by ice.

Each entry must show a date and time including AM or PM. All entries become the property of Voice of Alton, Inc., and the decision of the judge is final. Entries must be postmarked no later than February 28 and participation is limited to Alton residents and subscribers to Main Street.

ENTRY FORM

NAME: _____

ADDRESS: _____

PHONE NUMBER: _____

ICE-OUT WILL OCCUR ON _____ (date)

AT _____ AM or PM (circle one)

Mail this entry to P. O. Box 210,
Alton Bay NH 03810 by February 28, 1992.

Simply the Best

Bob Buchanan
Curt Buchanan
Jane Rojek



David Widerstrom
Dave Countway
Judy Bagley

BUCHANAN ASSOCIATES, INC.
Main Street, Alton, N.H. 03809

Call: 875-3128 Fax: 875-6378



El Greco Pizza

HAPPY NEW YEAR!

875-7333

Conveniently Located
Main Street - Alton, N.H.
CLOSED MONDAYS

THE CHECKOUT DESK

By Pat Merrill, Librarian

**CHILDREN'S STORY HOUR
CHANGED TO WEDNESDAYS**

The weekly Story Hour for three to five year olds will be changed to Wednesdays from 10 to 11a.m. this month beginning January 8.

NEW BOOKS

Murder & Walking Spirits by Robertson Davies

Comeback by Dick Francis

Jump & Other Stories by Nadine Gardiner

Doomed to Die by Dorothy Simpson

A Thousand Acres by Jane Smiley

No Greater Love by Danielle Steel

The Curious Naturalist

Walking the Trail: One Man's Journey Along the Trail of Tears by Jerry Ellis

Prairyerth by William Least Heat Moon

US 1: America's Original Main Street by Andrew Malcolm
Poems of Nature

DECORATING CONTEST

The winners of the Chamber of Commerce Christmas Decorating Contest will be announced in next month's issue of Main Street.



SUZY AND FROSTY

Suzy Snowflake (Megan Dassatti) and Frosty, the Snowman (Howard Sanborn) were among the performers at the recent School's Elementary Christmas Concert.

EAST ALTON GENERAL STORE

Jct. 28 and 28A - 875-3113

OPEN 7 DAYS

HOT COFFEE — GROCERIES — ICE COLD BEVERAGES
ICE — FISH & GAME LICENSES — MEGABUCKS
VIDEO & NINTENDO CARTRIDGE RENTALS — DAILY & SUNDAY PAPERS

U-HAUL

PROPANE FILLING STATION
SELF SERVICE GASOLINE STATION



BRUCE K. JOHNSON

Attorney at Law

HOMESTEAD PLACE, JCTS. RTE. 11 & 28

(603) 875-6131

P.O. Box 817
Alton, N.H. 03809

**(3) APARTMENTS
FOR RENT**

Fantastic Mountain Views
2 Bedrooms, Heat Included \$450/Mo.
2 Bedrooms, Heat Included \$425/Mo.
1 Bedroom, Heat & Electric \$350/Mo.

FERNCROFT FARM

New Durham Road - Alton

875-3352

875-3466



Dr. Mark Crosser

Auto Accident? Headache?

Back Pain? Sciatica?

CROSSER FAMILY

CHIROPRACTIC

OFFICE

Rivers Bend Professional Building

Call 875-3838

in Alton TUES & THURS

Fresh Meats Fishing Supplies

Deli Vegetables Gas

**WAYSIDE GROCERY
AT THE
ALTON CIRCLE**

*The one stop store
for all your needs*

(603) 875-2861

Bakery Videos
Fishing & Hunting Licenses

McKenney Transportation
Automotive Repair 776-7931
8-5 Mon-Sat



**ALL
 THE BEST
 FOR '92**

4 Oil Changes \$49.99*



Featuring Lee, Firestone, Goodyear, Bridgestone,
 Cooper and many other top name tires
 all on sale NOW!

Gift Certificates
 available for tires & repairs

Free Oil Change w/ inspection
 most cars & light pick-up trucks
 some restrictions.

BRAKE SPECIAL
Front or Rear
79.99

Most cars. Inspect calipers, or wheel cylinders,
 install new seals, repack wheel bearings,
 turn & true rotors or drums.
 Install new Brake Pads. Road Test.
 Expires 1/31/92

FREE Anti-freeze check w/any Service

Alignment Special

Hunter Computer Front End \$29.95
 Four Wheel Alignment \$49.95
 (check & adjust castor, camber & toe in. Cars & light
 truck only). Expires 1/31/92

*Oil change includes 5 qts oil & 1 filter
 Some restrictions apply

Remember We take VISA & MASTERCARD!

**PLANNING BOARD HEARING
 TO REVIEW PROPOSED AMENDMENTS**

The Planning Board will hold a public hearing on
 proposed amendments to the Zoning Ordinance at 7p.m. on
 Tuesday, January 14, in the Town Hall.

Copies of the complete text of the changes are available
 at the Planning Office. Summaries of these changes follow:
**SECTION 212 - LOTS IN TWO OR MORE ZONING
 DISTRICTS** - This amendment would cause all property
 owners whose property is split by a zone boundary to be
 treated the same. It would allow the grace boundary rule to
 be utilized by all such property owners regardless of length
 of ownership.

SECTION 213 - LOT CONFIGURATION - The amendment
 would cause the lot configuration provision to be moved
 from the Subdivision Regulations to the Zoning Ordinances.
 The provision is considered to be a land use control. Such
 controls typically appear as ordinances as opposed to
 administrative and policy controls which appear as
 regulations.

SECTION 222 - EXTENSION OR EXPANSION OF USE - The
 title is proposed to be changed to reflect the contents of the
 section. The new title would be CONTINUANCE OF NON-
 CONFORMING USES.

SECTION 223 - ABANDONMENT - The amendment provides
 relief to the non-conforming entities by extending the
 discontinuance provision by a year. The amendment would
 cause such entities to not be considered abandoned until
 there has been a discontinuance of 24 months.

SECTION 225 - OFF STREET PARKING - This amendment
 will cause parking lots to be set back a minimum of five feet
 from property lines. The purpose is to provide for snow
 storage and property line buffering.

SECTION 228 - HEIGHT RESTRICTIONS - The amendment
 will provide the ZBA an opportunity to issue a Special
 Exception for specific structures exceeding the height limit
 of 35 feet. Such structures would include cupolas and
 church towers.

SECTION 351 - PERMITTED USES (RURAL ZONE) - The
 CONTINUED ON NEXT PAGE

For Fast Neighborhood Service Call



Tel. 776-6172

- New Construction
- Older Homes
- Mobile/Modular Homes
- Additions
- Service Upgrades
- Small Jobs

**Stockbridge Corner Road
 Alton, New Hampshire 03809**

NH Master Lic. #7701 ME Master Lic. #10902
 Low Rates Free Estimates Safety Inspections
 Senior Citizens Discounts

**You Ought To Be
 In Pictures**

*Photography for all Occasions
 Weddings A Speciality*

*Earle & Judy Covell
 P.O. Box 81
 Alton Bay, N.H. 03810*

*Video Available
 (603) 875-6284*

CONTINUED FROM PREVIOUS PAGE
 particular residential uses allowed in the zone were previously not identified within the section; instead they were cross-referenced. The amendment would result in the permitted residential uses being listed in the section.

SECTION 361 - RESIDENTIAL RURAL ZONE BOUNDARY DESCRIPTION

- Amended to redistrict a section of the Route 28 highway corridor and adjacent lands between the existing Residential Rural Zone (Old Wolfeboro Road) and the Lakeshore Residential Zone (Route 28A). The affected area westerly of Route 28 to be redistricted from Lakeshore Residential and Residential to Residential Rural; the affected area easterly of Route 28 to be redistricted from Rural to Residential Rural.

SECTION 362 - PERMITTED USES (RESIDENTIAL RURAL ZONE)

- Amended to clarify the language regarding the maximum number of units allowed in a multi-family dwelling type structure. The maximum number of four is not affected.

ARTICLE 500 - DEFINITIONS

NON-CONFORMING STRUCTURE - Amended to add a definition for non-conforming structure. The purpose of which is to assist the readers in understanding the difference between a non-conforming use and non-conformance with a provision which governs use (setback, building height, etc.)

DWELLING - MULTI-FAMILY - Amended to change the threshold of what constitutes a multi-family dwelling from two families to three families. The amendment is proposed to eliminate confusion regarding the term duplex.



CHRISTMAS DONATION

The fourth grade students in Lawrice Ballentine's and Richard Kirby's classes collected over \$100 instead of exchanging class presents this year. The monies will be used by the Alton Fireflies to purchase some practical and some fun items for approximately 30 children. Pictured here presenting the check to Firefly Judy Fry are Jillian Sample and Josh Dewey.

**FRIENDS OF GILMAN LIBRARY
 PLAN SOCIAL FOR JANUARY 25**

The Friends of the Gilman Library extend an invitation to join them for coffee, refreshments, and entertainment on Saturday, January 25, from 10a.m. to noon. An RSVP is requested to 875-2157 or 875-2550.

**CHAMBER PLANS DINNER
 AND DIRECTIONAL MEETINGS**

The Alton/Alton Bay Chamber of Commerce will hold a directional meeting on Monday, January 13, at 7p.m. in the Gilman Library to discuss the future of the business community.

On Monday, January 20, the Chamber will hold a dinner-meeting at the Dockside Restaurant beginning with a social hour at 6 o'clock. For information, call 875-5510 or 875-5678.

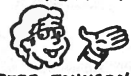


FREE SERVICE ESTIMATES
"while you wait"

AREA'S ONLY FULL SALES AND SERVICE
 DEALER FOR:

ANTENNAS • DISHES • T.V. • VCR • COMPUTERS
 we sell used T.V.'s - TRADE-INS
 WELCOME!

• RESIDENTIAL & COMMERCIAL WORK •



755-3113
 TELEVISIONS ETC.

PETE JOHNSON, PROP. RT. 11, FARMINGTON, N.H.

(603) 875-7337



Sheerman H. Brown Plumbing
 WATER SYSTEMS • HEATING SYSTEMS
 BACKFLOW DEVICES

NH MASTERS LIC. #360
 ME MASTERS LIC. #02595
 NHPI #555 WSPCC #0004
 BACKFLOW DEVICE TESTER #3820

P.O. Box 404
 ALTON, NH 03809

Karen's Country Kitchen

Main Street, Alton
 875-6544

OPEN 7 Days

Mon. - Wed. 6 am - 2 pm
 Thurs. - Sun 6 am - 8 pm

LEGAL & FINANCIAL ASPECTS OF RETIREMENT

The Gilman Library will host a free workshop, "Retirement, Estate and Tax Planning", provided by the Marketing Collaborative, an organization of attorneys and financial planners on Tuesday, January 28, at 10a.m.

Stephen Mathieu of Northern Retirements and Benefits Plans and Attorney Ted Beasley of Laboe and Beasley will cover such topics as the banking crisis, probate fees, the modified trust for estates, nursing home stays, passing along assets, and interest rates.

A free hour of private consultation will be available at a later date to all who attend.

Dockside Restaurant

Rt 28A, Alton Bay 875-2110

Call us for our New Winter Hours.

Closed for the Holidays December 15
Reopening January 17, 1992

Thank you for a good year
Happy Holidays from ALL of US

Call **TOWNE** for...

- Heating Systems
- Electric to Gas
- Hot Water Heaters
- Plumbing Repairs
- Oil Burner Repairs
- Well Installations & Repairs
- 24 Hr. Burner Service
- Air Conditioning

Serving The Counties of
Strafford - Belknap - Carroll

Howard Towne 603/569-5891

ALTON VILLAGE 5 & 10 V & S Variety Main St., Alton

We wish you a
Happy & Healthy
New Year!
We appreciate
your support

875-5510

MEALS ON WHEELS

Are you homebound? Isolated? Over 60 years old? Unable to prepare a nutritious meal? Then the Elderly Nutrition Program may be the answer for you or someone you know.

There are immediate openings for the Meals on Wheels program that delivers hot and nutritious noontime meals Monday through Friday. Call Helen at 875-7102 for more information.

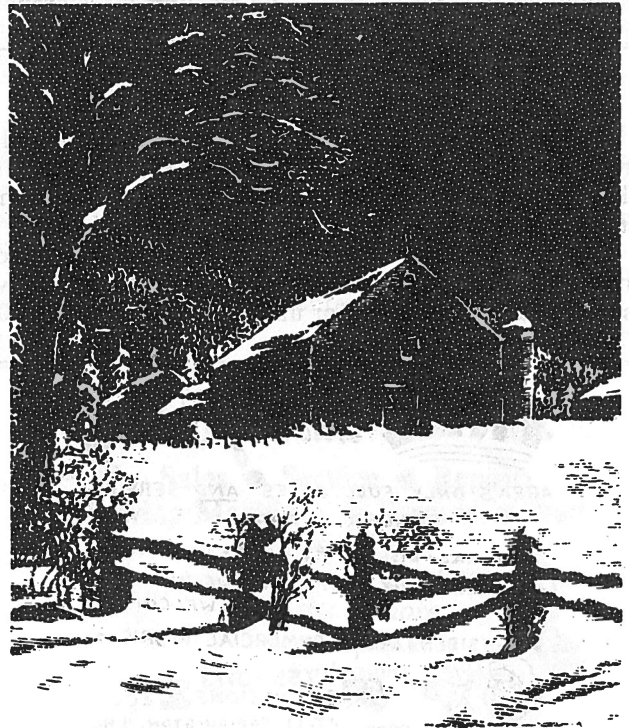
BUSINESS AFTER HOURS FOCUS IS COUNTRY DECORATING

The January Business After Hours will be hosted by Ann Harris of Ann's Country Decorating Consulting on Friday, January 10, from 5:30 to 7:30p.m. at her Church Street residence.

This series of social events for Alton business people is sponsored by the Alton/Alton Bay Chamber of Commerce.

SEEDLINGS AVAILABLE FROM BELKNAP COUNTY CONSERVATION

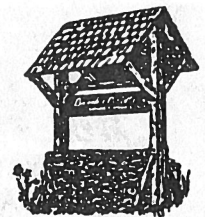
Anyone interested in purchasing wildlife or bird protection and feed seedlings may receive a selection price list and order form by calling the Belknap County Conservation District at 528-8713. For large orders, the State of NH has a similar program and may be reached at 271-3456 or 524-1737.



Brook & Bridle Summer Homes

On Lake Winnepesaukee
Roberts Cove Road

ALTON, NEW HAMPSHIRE



RENTAL INFORMATION & RESERVATIONS
WRITE OR CALL

BONNIE DUNBAR JOSEPH
P.O. BOX 270
WOLFEBORO, N.H. 03894

(603) 569-2707

Main Street Information Center

Classified Ads

Alton residents may place classified ads in Main Street each month. Ads are limited to non-commercial, private individuals who have items for sale, items wanted, free items, personals, or help wanted notices. The rate is \$1 for each ad. Main Street reserves the right to refuse any ad. Ads must be mailed with payment to P. O. Box 210, Alton Bay, 03810, by the 15th of the preceding month.

FOR SALE

1978 Plymouth Valari, 4 Door, Automatic Transmission, V8, \$500 776-7931

Snowshoes - 1 Pair New, 1 Like New, 875-5346

1987 Chev. Station Wagon (Celebrity), Automatic, Air Cond., Mint Condition, Reasonable, 875-6337 Evenings

1984 Mercury Grand Marquis, 66K Miles, Loaded, New Tires, Hoses & Exhaust, Mint Condition, \$2500, Call Joe 875-3708

SOLID WASTE TRANSFER STATION TO BEGIN OPERATION THIS MONTH

Alton's Solid Waste Transfer Station is scheduled to begin operation this month adjacent to the Landfill on Hurd Hill Road. Hours of operation are Monday, Tuesday, Thursday, and Friday from 8a.m. to 3:30p.m. and Saturday from 7:30a.m. to 3p.m. The facility will be closed on Wednesday and Sunday.

Designed to provide convenient one-way access for both commercial haulers and residents, the site is planned for future expansion of recycling facilities, alteration of traffic flow to suit changing requirements, and any other unanticipated aspects of operation. Removal of compacted solid waste occurs within the lower level separate from the dumping area.

The routine of waste disposal for individuals will remain relatively unchanged. The first step will be at the expanded recycling facility as is now the case, followed by a drive to the transfer station where solid waste will be compacted for eventual removal to a landfill.

Tires, furniture and metals will still have designated areas with disposal after payment of the appropriate fee to the attendant.

The following items continue to constitute unacceptable waste: hot ashes, asbestos-containing waste, batteries, drilling fluids, caustic chemicals, radiator fluid, infectious waste, paints and paint cans, pesticides, wire and cable, tree stumps, ammunition and firearms, radioactive materials, acids, insecticides, poisons, and any item exceeding 6'6" in any one of its dimensions.



JANUARY EVENTS

- Wed. 1 - NEW YEAR'S DAY
- Fri. 3 - BINGO, American Legion Hall, 7p.m.
PUBLIC HEARING on Grading Policy, Elementary Resource Center, Alton School, 7p.m.
GIRLS BASKETBALL at Pittsfield, 7:30p.m.
BOYS BASKETBALL vs. Epping, 7:30p.m.
- Tue. 7 - GIRLS BASKETBALL at Moultonboro, 6:30p.m.
BOYS BASKETBALL at Moultonboro, 8p.m.
- Wed. 8 - STORY HOUR: 3 to 5 Year Olds, Gilman Library, 10-11a.m.
BINGO, American Legion Hall, 7p.m.
- Fri. 10 - BUSINESS AFTER HOURS, Harris Residence, Church Street, 5:30 to 7:30p.m.
GIRLS BASKETBALL at Derryfield, 5:30p.m.
BINGO, American Legion Hall, 7p.m.
BOYS BASKETBALL at Derryfield, 7p.m.
- Mon. 13 - BOYS BASKETBALL vs. Calvary Christian, 6:30p.m.
CHAMBER OF COMMERCE MEETING, Gilman Library, 7p.m.
- Tue. 14 - GIRLS BASKETBALL at Linwood, 6p.m.
PLANNING BOARD PUBLIC HEARING, Town Hall, 7p.m.
BOYS BASKETBALL at Linwood, 7:30p.m.
- Wed. 15 - STORY HOUR: 3 to 5 Year Olds, Gilman Library, 10-11a.m.
CAPITAL IMPROVEMENTS PUBLIC HEARING, Gilman Library, 6:30p.m.
BINGO, American Legion Hall, 7p.m.
- Thu. 16 - GIRLS BASKETBALL vs. Laconia Christian, 6:30p.m.
- Fri. 17 - BINGO, American Legion Hall, 7p.m.
BOYS BASKETBALL vs. Pittsfield, 7:30p.m.
- Mon. 20 - MARTIN LUTHER KING'S BIRTHDAY (Observed)
CHAMBER OF COMMERCE DINNER MEETING, Dockside Restaurant, 6p.m.
- Tue. 21 - VOTER REGISTRATION, Town Hall, 7-8p.m.
GIRLS BASKETBALL at Belmont, 7:30p.m.
BOYS BASKETBALL at Pittsfield, 7:30p.m.
- Wed. 22 - FILING BEGINS For Town and School Offices
STORY HOUR: 3 to 5 Year Olds, Gilman Library, 10-11a.m.
BINGO, American Legion Hall, 7p.m.
- Fri. 24 - BINGO, American Legion Hall, 7p.m.
GIRLS BASKETBALL at Epping, 7:30p.m.
BOYS BASKETBALL at Belmont, 7:45p.m.
- Sat. 25 - FRIENDS OF THE LIBRARY SOCIAL, Gilman Library, 10a.m. to Noon
SPAGHETTI SUPPER, Pearson Road Community Center, 6p.m.
- Mon. 27 - GIRLS BASKETBALL vs. Pittsfield, 7:30p.m.
- Tue. 28 - LEGAL & FINANCIAL SPEAKER, Gilman Library, 10a.m.
GIRLS BASKETBALL vs. Linwood, 6p.m.
VOTER REGISTRATION, Town Hall, 7-9p.m.
BOYS BASKETBALL vs. Linwood, 7:30p.m.
- Wed. 29 - STORY HOUR: 3 to 5 Year Olds, Gilman Library, 10-11a.m.
BINGO, American Legion Hall, 7p.m.
- Thu. 30 - GIRLS BASKETBALL vs. Concord Christian, 7:30p.m.
- Fri. 31 - FILING ENDS For Town and School Offices
BINGO, American Legion Hall, 7p.m.

REMOVE and SAVE

Schedules

CHURCHES:

Advent Christian Church - Sunday 11a.m., Pastor Dr. Warren Harris
Baha'i Fireside - Wednesday 8p.m., Holway Residence, 859-5191
Community Church - Sunday 11a.m., Congregational Meeting House, Dr. Peter E. Roussaki, 875-5561
Cornerstone Bible Church - Sunday 9:30a.m. & 6p.m., Sunday School 11a.m., Pastor Scott Button, 875-2865
First Free Will Baptist Church - Sunday School 9:45a.m., Church 11a.m., Evening Service 6p.m., Wednesday Prayer Meeting 7p.m., Depot St., New Durham, Pastor James Nason
St. Joan of Arc - Saturday 5p.m., Sunday 8 & 11a.m., Msgr. Leo F. Hines

COMMUNITY ACTION PROGRAM:

Monday & Friday 1 to 3p.m., Wednesday 9a.m. to 3p.m., Alton Bay Community House, 875-7102

GILMAN LIBRARY:

Monday & Wednesday Noon to 8p.m., Friday 9a.m. to 5p.m., Saturday 9a.m. to Noon

TOWN HALL:

Selectman's Office, Tax Collector, Town Administrator, Town Clerk, and Welfare Officer - 8:30a.m. to 4:30p.m.
Planning Board - Monday, Tuesday, Thursday, Friday 8:30a.m. to 3:30p.m., Wednesday 1 to 3:30p.m., Meetings with Planner by Appointment, Closed Noon to 1p.m.
Building Inspector - Wednesday 1 to 4p.m., Friday 4 to 8p.m., Inspection Appointments Monday, Tuesday, Thursday 8a.m. to 4p.m., Wednesday 8a.m. to Noon, Friday 1 to 3p.m. Closed Noon to 1p.m.

LANDFILL:

Monday, Thursday, Friday - 8a.m. to 3:30p.m.
Tuesday & Saturday - 7:30a.m. to 3p.m.
Wednesday & Sunday - Closed

SENIOR MEAL SITE:

Monday through Friday 10a.m. to 2p.m., Pearson Road Center

ORGANIZATIONS:

ALTON CONCERNED TAXPAYERS - 1st & 3rd Wednesday, 859-2021 or 875-6431
AMERICAN LEGION - 2nd Monday 7p.m., Legion Hall
AMERICAN LEGION AUXILIARY - 2nd Monday 7p.m., Legion Hall
CHESS CLUB - Tuesday 7:30p.m., Busy Corner Store
CUB SCOUT PACK 53 - Last Tuesday 6:30p.m., Legion Hall
DIVORCED/SEPARATED PARENTING SUPPORT GROUP - 2nd & 4th Fridays 5:30p.m., Congregational Meeting House
EASTERN STAR - 2nd Tuesday
GARDEN CLUB - 4th Tuesday
FLYING CLUB - 2nd Wednesday
HAPPY HOBBY DOLL CLUB - 4th Friday 7p.m., Community House
ALTON HISTORICAL SOCIETY - 3rd Tuesday 7:30p.m., March thru October, Place to be Announced
KNIGHTS OF COLUMBUS - 1st & 3rd Tuesday 7:30p.m., St. Joan of Arc Church Hall
LIONS CLUB - 1st & 3rd Thursday 6:30p.m. Mama Rina's Restaurant, New Durham
MASONIC LODGE - 2nd Thursday
NEW DURHAM CAMERA CLUB - 2nd & 4th Wednesday 7p.m., New Durham School
PARENT TEACHER COMMUNITY ORGANIZATION - 3rd Wednesday 7p.m. Alton Central School
ST. JOAN OF ARC LADIES GUILD - Last Thursday 7:30p.m. Church Hall
SENIOR CITIZENS - 2nd Wednesday 10a.m., Pearson Road Center
VFW - 3rd Monday 7:30p.m. American Legion Hall
CALL 875-7300 TO UP-DATE THE ABOVE LISTINGS

Boards and Committees

ADDRESS COMMITTEE - Meets on Call. Chairman David Jensen, 875-5637.
BOARD OF SELECTMEN - Meets Alternate Mondays at 9a.m. Chairman Patricia Merrill. Call 875-2161 for Appointment.
BUDGET COMMITTEE - Meets 3rd Thursday at 7p.m. Chairman Ruth Messier, 875-6750.
CAPITAL IMPROVEMENTS COMMITTEE - Meets on Call. Chairman Carl Chamberlain.
CEMETERY TRUSTEES - Meet 1st & 3rd Monday at 1p.m. Chairman Florence Shaw, 875-2220.
CONSERVATION COMMISSION - Meets 2nd Thursday at 7p.m. Chairman Michael Burke, 875-5492.
FIRE WARDS - Meet on Call. Chief Russell Jones, 875-7510.
GILMAN MUSEUM COMMITTEE - Meets on Call. Anna Haase, 875-5611.
LAND CONSERVATION INVESTMENT PROGRAM - Meets on Call, Chairman Michael Burke, 875-5492.
LANDFILL STUDY COMMITTEE - Meets on Call. Chairman Ted Cole, 875-2437.
OLD HOME WEEK COMMITTEE - Meets 4th Monday at 7p.m. in the Legion Hall. Chairman George Smith, 875-3229.
PARKS AND RECREATION COMMITTEE - Meets on Call. Chairman Larry Alting, 293-0431
PLANNING BOARD - Meets 1st Tuesday at 7p.m. Chairman Harold Finethy III, Call 875-5095 for Appointment.
SCHOOL BOARD - Meets 2nd & 4th Monday at 6p.m. at School. Chairman June Tanguay, 875-7630.
SUPERVISORS OF THE CHECKLIST - Meet on Call. Chairman Alice Ziegra, 875-2151.
TRUSTEES OF THE GILMAN LIBRARY - Meet 3rd Monday at 3:30p.m. Chairman David Countway, 569-3648.
TRUSTEES OF TRUST FUNDS - Meet on Call. Chairman Joseph R. Houle, 875-7321.
WAGE AND SALARY REVIEW BOARD - Meets on Call. Chairman Fred Engelbrecht, 293-4975.
WATER COMMISSION - Meets 2nd & 4th Wednesday at 9:30a.m. Chairman Richard Duncan, 875-5718.
ZONING BOARD OF ADJUSTMENT - Meets on Call.

Main Street

Published Monthly Since 1985 by
Voice of Alton, Inc., A Non-Profit Organization
P. O. Box 210, Alton Bay NH 03810

Editor.....John Duffek
Assistant Editor.....Robert Boyce
Business Manager.....Jeanne Cole
Advertising Manager.....Warren Harris
Circulation Manager.....Robert Smith
Staff.....Paulette Alden, Rose and George Bornheim,
Eileen Brown, Catherine and Bob Calvert, Ted Cole, Barbara Ingoldsby, Nancy and Jim Merrill, Lynda Plunkett, Jean Roberts, Gertrude and Gerald Row, Florence Shaw, Nancy Thomas, Frances and James Washburn

Printed by Alton Printing Company
on 100% Recycled Paper

Phones: Editorial 875-7300 Advertising 875-6346
Subscriptions are available to receive Main Street
by first class mail at \$7.50 for 12 issues

Remove and Save

SCHOOL SCIENCE TEACHER WINS CONSERVATION HONORS

By Jim Merrill

Our environment is a very important issue and one that concerns many people, especially Brian Davidson, Grades 7 and 8 science teacher at Alton Central School, who recently was named Conservation Educator of the Year by the NH Association of Conservation Districts.

Davidson has been actively involved with educating his students about the environment, not only in the classroom, but out in the environment itself.



One of the programs he developed was the Aquatics Studies Program in which students analyze and study the biological and chemical characteristics of the Merrymeeting River area including its watershed. The students collect water samples from Mill Pond or the Merrymeeting River to test for ph, dissolved oxygen, and hardness, which helps indicate the ability of the water to

neutralize or buffer acid rain and other sources of acidity.

Other samples are collected from the ponds mucky bottom and leaf litter. From their samples, Davidson's students have the opportunity to identify a wide variety of invertebrate animals, clams, worms, snails, crayfish, and numerous insects examined under the classroom microscope.

Studies of the watershed reveal whether the quality of the water is affected by activities and pollutants from the surrounding area. The conclusion is that the pond and its numerous inhabitants are in good health.

Through his guidance, Davidson's students also have developed hiking trails, established wood duck boxes, and started a tree planting program.

It is people like Davidson who can be thanked for protecting our environment. He is providing the background skills, information, and decision-making techniques that will help his students learn the wise use of natural resources in the future.

WOODSTOVE INFORMATION

Anyone contemplating the installation of a woodstove is urged to contact Fire Department Lieutenant Jack Woodland, 875-2691, for a free consultation on guidelines and safety measures. Lt. Woodland also is available to inspect existing installations.

TELEPHONE 603-875-6151

DENISE MERRITT, M.D.

OFFICE HOURS
BY APPOINTMENT

BOX 900, MAIN STREET ALTON, N.H. 03809

GALE HILL MASONRY



GARY OICKLE
875-3335

CHIMNEYS
FIREPLACES
HEARTHES

REPAIRS

BRICK - BLOCK - STONE
CULTURED STONE

Kathy Jones

Village Stylist

A Family Hair Care Center

DOWNING'S LANDING
ALTON BAY **875-3940**

Evening Appointments Available



SATURDAY
EARLY BIRD SPECIALS
4:30PM - 6PM

- English Cut Prime Rib*\$6.95
 - Teriyaki Chicken Breast*\$5.95
 - Hot Turkey Dinner*\$5.95
 - Fish & Chips (Served w/Fries & Slaw) ..\$4.95
- * Served w/Salad Bar & Potato

Route 11, Alton Bay **875-3096**
Winter Hrs: Fri. 11-8; Sat. & Sun. 8 AM-8 PM

Alton Funeral Home

School Street
Alton, N.H. 03809
(603) 875-3311



SAWYER PROFESSIONAL CENTER
Main Street Alton

OIL & GAS SYSTEMS

Dick Quindley & Sons

HEATING SERVICE
COMPLETE SYSTEMS - REPAIRS

EMERGENCY SERVICE
875-2910

MAIN STREET
ALTON, N.H. 03809

Alton Office Services

Sawyer Professional Center • Main Street • Alton NH

TELEPHONE ANSWERING SERVICE
COMMERCIAL & PERSONAL ACCOUNTS
PAGERS AVAILABLE

(Cindy & John Duffek 875-7300)
Fax Number (603) 875-3162

875-6269

Custom

Sewing and Alterations
Crafts & more



"You sow your oats... while I sew your clothes"

Fall/Winter Hours: 8 am to 2 pm

Evening appointments available

Brenda MacKay Sawyers Professional Center

H.W. Brown & Assoc.
ACCOUNTING &
TAX PROFESSIONALS
(603) 875-3466

TAX SEASON HOURS

(starting January 21)

Mondays 3-7 Wednesdays 9-8
****JANUARY SPECIAL****

Students - Get your Tax Returns Prepared
and filed electronically for only \$20.00

We offer **ELECTRONIC TAX FILING** and **FAST FUNDS**
(Refund Service)

**"BAG AND TAG" PROGRAM
CONSIDERED FOR TRASH**

Dover, Somersworth and other communities have launched a "bag and tag" program to reduce increased taxpayer costs with the widespread advent of transfer stations. The concept is being considered by Alton Selectmen, who held a public hearing on the subject last month. One option is to fund these increased expenses through a user fee program that charges residents for transportation and disposal based on volume rather than through the property tax system.

If adopted, all trash would have to be placed in a special Alton trash bag or tagged with a special Alton bulky item tag. These special bags would be on sale at the Town Hall and several local stores at a modest cost. There would be no charge for recycling items. Trash placed in unapproved bags or other containers would not be accepted.

With the operation of the transfer station, the way Alton handles its trash will change. Solid waste will be transferred from the Alton Solid Waste Facility to a permitted solid waste disposal facility. Transportation and disposal costs will exceed \$61 per ton, representing a projected annual cost of over \$140,000. The "bag and tag" program, if implemented, could wipe out this increased tax amount and heavy users would pay more and light users pay less. If you didn't get to the public hearing, the Selectmen would still like to hear your reaction to the concept before they take any action on this option.

5 YEARS AGO....

....Pamela Andrade was named Administrative Assistant to Town Administrator Terry Clifford and Diantha Moulton replaced Sue McKenna as Assessing Clerk....a building expansion boom was reported by Building Inspector Steve Dana....Main Street sponsored its first Ice-Out Contest.... the Old Home Week Committee was offering a \$50 Savings Bond to the winner of the contest to provide the theme of the 1987 event.



Royce's Sew & Vac.

Sales • Service • Repairs
Sewing Machines • Sergers • Vac's

Drop-Off At:

Sewing and Alterations
Crafts & more

Brenda MacKay
Sawyers Professional Center

875-6269



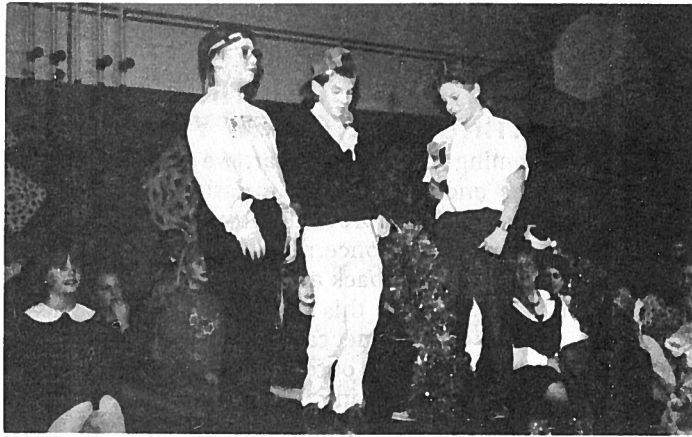
THE BAY CHURCH

(Advent Christian)

Rand Hill Road, Alton Bay

Worship 11 AM

Start the New Year right - ATTEND CHURCH!



FOURTH GRADE RAPPERS

Kris Hulett, Jacob Locke, and Mike Hallin offered their rap version of "Up On The Housetop" during the Elementary Christmas Concert, "Santa's Frosty Follies", in December.

**ALTON WATER WORKS
OPENS CLERK POSITION**

The Alton Water Works has announced the opening of a part-time clerk position with pay commensurate with experience. Resumes should be delivered to the Town Clerk's office in Town Hall.

LP GAS - FUEL OIL - MOBIL LUBRICANTS - HEATING SYSTEMS

FERN'S ENERGY

CONCORD • 200 No. State St. • Box 491 • 03301 875-3500
 ALTON • Main St. • Box 446 • 03809 1-800-852-3366
 FRANKLIN • 221 So Main St. • Box 200 • 03235 Service & Operations

NAPA AUTO PARTS - FARMINGTON

WE CARRY A FULL LINE
OF AUTO PARTS & ACCESSORIES
INCLUDING...

- Parts for Imports
- Parts for Trucks
- Paint & Supplies
- Brand Names You Rely On

ASK ABOUT NAPA'S NATIONAL WARRANTY PROGRAM

NAPA AUTO PARTS
Route 11
Farmington
755-2264
800-734-2269
Mon-Fri 8am to 6:30 pm • Sat 8am to 5pm • Sun 9am-1pm

NO SCHOOL TODAY?

You wake up and find it snowed during the night and the roads are iced over! Will there be school today? How do you find out? Call the school? Your teacher? Your bus driver? NO! NO! NO!

You tune your radio to WASR (AM 1420), WLNH (FM 98.3), or KOST (FM 96.7 or AM 930) for official school closing announcements.

EARTH CARE

The old cistern technique will help you keep your garden green. Catch rainwater in a large tub or garbage can, and you'll save well water or treated water from municipal sources whenever you water your plants.



OSGOOD PHARMACY

Prescription Specialists

FARMINGTON, N.H.

TEL. 755-3771 & 755-2440

"FRIENDLY PERSONALIZED SERVICE"

FAX # 603-755-9372

**MORE TO MUNCH
....FOR LUNCH!**

*** JANUARY LUNCHEON SPECIALS ***

Served

11AM to 5PM

Friday, Saturday and Sunday

HADDOCK MELT fresh Atlantic Haddock served between two grilled pieces of Texas Toast and melted cheese. Served with french fries\$3.95

PEPPER STEAK SANDWICH lean and juicy steak with grilled pepper strips, served with french fries and a soft drink\$3.95

PIZZARONI CASSEROLE wagon wheel pasta covered with pizza sauce and topped with mozzarella cheese and sliced pepperoni. Served with our 28 item salad bar\$3.95

PRIME RIB SANDWICH juicy prime rib served open faced over fresh baked bread with gravy & french fries\$4.95

ONLY AT



RESTAURANT

....OF COURSE!

Victoria Pier, Rt. 11, Alton Bay, NH 875-3096

DOUBLE DIP RECESSION ? \$? \$? \$? \$? \$? \$? \$? \$? \$

Avoid Major Expenses and Costly Mistakes by Using the **PREVENTIVE VEHICLE MAINTENANCE PLAN AT THE ALTON ENGINE WORKS**

WHAT IS P.V.M. ??????

Its a special preventive maintenance plan to restore and keep your vehicle in top running condition which only saves you money and avoids costly repairs and vehicle replacement in these hard economic times.

OIL AND LUBE Including 5 qts. 10-40 / Oil filter/ & Grease (How long has it been?)

\$ 16.95

- 4 Cyl. Tune Up (Change plugs, inspect) \$24.95
- 6 Cyl. Tune Up ignition system, time engine, \$28.95
- 8 Cyl. Tune Up check and advise) \$32.95

\$ (Better Fuel Economy) \$

Brakes * Exhaust * And many more P.V. M. Services available at the **Alton Engine Works**. New Lower

Shop Rates!

Don't Get the Recession Blues
Call Joe for an appointment today

875-3708

As always free estimates on all work.

Shop Hours ---- Mon-Fri 9 to 5
Saturday 8 to 12 // Closed on the Lord's Day

ALTON ENGINE WORKS

HOME OF: CREATIVE FLIGHT - 15 YEARS EXPERIENCE

- | | |
|--|---|
| <ul style="list-style-type: none"> • LAWN MOWERS • TRACTORS • CHAIN SAWS • POWER EQUIPMENT • MOTORCYCLES • SKI MOBILES • AUTOMOBILES • ULTRALIGHTS | <ul style="list-style-type: none"> • TUNE-UP • CHAIN/BLADES SHARPENED • CARB. OVERHAUL • FREE EQUIPMENT INSPECTIONS • BRAKES AND EXHAUSTS • FREE PICK-UP/DELIVERIES • PREOWNED EQUIPMENT SALE • TRADE INS |
|--|---|

Joe
603-875-3708

P.O. BOX 952
COFFIN BROOK RD., ALTON N.H., 03809

ALTON OUTDOORS

By Jack Miller

FISHING AND HUNTING CONTINUES INTO NEW YEAR

With the coming of the New Year, we look forward to the new seasons and reflect on the past. January is the month to use the past to improve the future. This past year has seen many challenges concerning the sports of hunting and fishing. One cannot sit back and expect someone else to take care of things. Resolve this new year to write at least one letter, make one phone call, or join one group or organization to support your outdoor activities.

For the fisherperson, fishing season continues in many areas through natural openings. With the lack of "hard water", fishing through natural openings is easy. Be sure to check out the specific rules of the area you wish to fish. Remember, the fish's metabolism is slowed down in the winter. Your tackle must be presented at a slow speed to enable the fish to catch it. Fish deeper than usual as the fish will be down in the lower, warmer water.

For the hunter, hare and rabbit season is still open. They are sparse in the Alton area. Try the lower swampy areas with lots of evergreens for shelter, or logged-over areas with adjacent evergreens. For the serious snowshoe hunter, head north. Areas above the White Mountains offer excellent hare hunting.

Varmint hunting is another option open to the hunter in January. One can combine varmint hunting with deer scouting. Coyote and fox can be found in almost any large tract of wooded area in Alton.

Beware of thin ice!

VEGGIES NEEDED

Produce farmers are needed to participate in the Chamber of Commerce Open Air Market. Plans are underway for the summer of 1992 to include local fruit and vegetable growers as part of the market. Call 875-5510 for information.



RENTALS

- * 2 Bedrm APT - Walk to stores-school
- * OFFICE SPACE - with or without services
- * 2 Bedrm Home - Views
- * 2 Bedrm Home - Beach Rights

Let us know your needs

LIST YOUR PROPERTY WITH US
SALES - RENTALS

REALETY WORLD®—Lakes Region
Route 11 - Box 314, Alton Bay, NH 03810
Bus: (603) 875-6051



Each office independently owned and operated

FARMINGTON NATIONAL BANK

ALTON
875.6111

Banking Hours

Monday - Thursday 9am-5pm
Friday 9am-6pm
Saturday 9am-12pm

FARMINGTON
755.2255

WOLFEBORO
569.8999



TAX RATE SET BY EXPENDITURES AND OFFSETTING INCOME

Do you realize that it is possible for the Town budget to be reduced by 5 or 6% and the Town's share of the tax rate can still go up anywhere from 3 to 10%? Or that the Town budget can go up 6% and the town's share of the tax rate can stay even or even be reduced from the current year?

Both outcomes are possible, and the key is examining the projected offsetting Town income and any possible unexpended funds from the current year being returned to help reduce next year's taxes. In these economic times, it's increasingly rare to see any appreciable amount unexpended. So the focus must be on the offsetting income.

The budget includes both expenditures and income projections. If the expenditures go up and the income goes up even more, the latter might offset the former and not impact the tax rate. The problem for most towns these days is that expenditures tend to go up, and traditional sources of offsetting income go down. In such a case, the projected budget increase can't be equated with a tax increase of similar proportions.

Traditional offsetting income items in the Town budget include the Town share of auto permit fees, fees generated by the Planning Board, state grants, building permit fees, residence taxes, land use change taxes, interest on investments, town property rentals, etc. A town tends to

have more sources of offsetting income than does a school system. The County does have offsetting income also.

At the risk of over-simplifying, the tax rate is arrived at by identifying total expenditures and then subtracting the offsetting income and unexpended funds in the current year. The difference is what must be raised in taxes locally. If this amount goes up, the tax rate goes up proportionately.

HATS AND MITTENS NEEDED AT SCHOOL

Hats and mittens are needed at Alton Central School for children who do not have any or forget to bring them to school. Donations may be dropped off at the School Nurse's Office during school hours.

SERVISTAR.

(603)875-3900
(603) 524-1692

ALTON HOME CENTER GILFORD HOME CENTER

SAWS SHARPENED

RTE 11
ALTON, NH 03809

FULL TIME AGENTS MAKE THE DIFFERENCE

(603) 875-2525

Ryan & Toman REALTORS® **Better Homes and Gardens**

Main Street (across from the Laundrymat)

COMPUTERS

DON'T buy your new computer somewhere else before you see us! Our recent customers have been surprised by the **QUALITY** and **PRICES WE OFFER**.

We can offer you **NAME BRANDS** at **BARGAIN PRICES** or the same high quality without the name for **EVEN LESS!**

For example: **COMPLETE 286 PC SYSTEM WITH MONOCHROME VGA MONITOR, 40MB HARD DISK, MS-DOS FOR ONLY \$699**

PANASONIC PRINTERS STARTING AT ONLY \$149

Robert Boyce & Company

**River's Bend Professional Building
Main Street, Alton Bay
(603)875-6066**

Bebe Finethy
Main St., Alton, NH
875-HAIR

OPEN TUES. - SAT.
Evenings available

Oxyfresh



NEXUS

PAUL MITCHELL
PROFESSIONAL SALON PRODUCTS

BUILDING EXCAVATION

Homes, Additions, Dormers,
Garages, Remodeling, Decks,
Gutters & Roofing
Land Clearing, Roadwork, Septic
Systems & Asphalt Driveways

EQUIPMENT RENTAL

Backhoe \$250./8 hr day
Dozer \$250./8 hr day
Excavator \$500/8 hr day
with operator

½ Day Rates for Senior Citizens

No Job too Big or Small!!

FREE ESTIMATES

L.L. BRASWELL CONSTRUCTION

875-5315

Fully insured, References Available
25 Years in Business

CAPITAL IMPROVEMENTS PUBLIC HEARING

The Capital Planning Committee will hold a Public Hearing on Wednesday, January 15, at 6:30p.m. in the Gilman Library's Agnes Thompson Room.

This work session with the public and officials from the school and municipal departments will serve as a forum for the exchange of information concerning the committee's recommendations to the Budget Committee and Planning Board. In addition, the committee's expanded role and process will be explained.

The meeting's agenda will include a review of the recommendations submitted to the Budget Committee for the 1992 warrant articles.

PART-TIME OFFICERS SOUGHT BY POLICE DEPARTMENT

The Alton Police Department is accepting applications for part-time officers. Applicants must be at least 21 years of age and be able to pass an oral board interview and background investigation.

Applications are available by contacting the Department at P.O. Box 240, Alton 03809, or by calling 875-3752 and must be returned by Friday, January 31.

If at first you don't succeed, you are pretty much like everyone else.

YOUNG ASTRONAUTS PRESENT PROGRAM AT PLANETARIUM

Young Astronauts Danielle Decatur and Alec O'Meara and Chapter Advisor Rolf Dutzmann recently were invited to participate in an out-reach program at the Christa McAuliffe Planetarium.

The program consists of pre-show presentations dealing with aerospace subjects tailored to the grade level in attendance.

The Young Astronaut Council, which administers the program, is a non-profit corporation created in 1984 that has become the world's largest, space-related, educational, youth organization with over 700,000 members in over 28,000 chapters in the United States.

VOLUNTEERS SOUGHT FOR ELECTION DAYS


Town Moderator John Duffek is seeking volunteers to staff the polls for the Presidential Primary on February 18 and the Town Elections on March 10. Individuals will be needed to check in voters, provide voter assistance and booth supervision, and count ballots at the close of the polls.

Any registered voter interested in helping should call Duffek at 875-7300 or 569-4441.

How come there was so much movie censorship back when it wasn't needed and so little now?

YOUR COMPLETE ANIMAL SUPPLY STORE

BLUE SEAL & PURINA PRODUCTS



THE TACK SHOP
AT NEW DURHAM GENERAL

ENGLISH & WESTERN
EVERYTHING FOR
HORSE & RIDER

Tel. 603-859-5400
OPEN 7-8 7 DAYS
LINDA MISIASZEK, OWNER
3 Old Bay Rd. - New Durham



ALTON ~ ALTON BAY
CHAMBER OF COMMERCE

POST OFFICE BOX 550
ALTON, NEW HAMPSHIRE 03809
603-875-5777

*Your local businesses are your neighbors.
We appreciate your support.*



**ELDER CARE
SERVICES**

AMS REFUSE DISPOSAL

CALL AMS SERVICES

ANNOUNCES! ELDER CARE

Do you or a Friend or Loved one need:

- * Their Steps Shoveled
- * Trash collected wherever
- * A simple weekly household chore completed
- * An errand completed
- * As well as other needs
- * For a small weekly fee

875-2711 with your needs or questions



Main Street

Printed on 100% Recycled Paper

Bulk Rate
U.S. Postage
PAID
Permit No. 2
Alton Bay, NH

**CAR - RT SORT
POSTAL CUSTOMER**