


☐

I'm not robot


reCAPTCHA

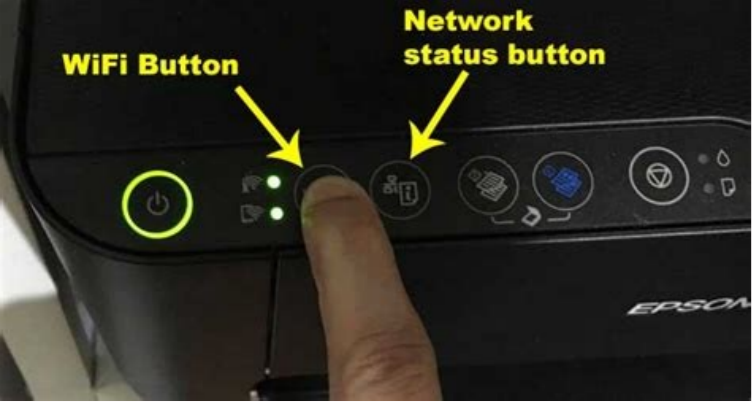
I'm not robot!

Epson printer default wifi password

Wi-Fi Direct mode can be enabled to enable direct communication between the product and a computer or other devices without a router or Wi-Fi access point. Before starting, make sure the map is loaded. Note: If you are printing from a computer, make sure you have installed the network software as described here. While holding the Wi-Fi button, press the network status button until the Wi-Fi light and Wi-Fi Direct light flash. Then release the two buttons. When the two lights stop flashing, the Wi-Fi Direct indicator remains on. Press and hold the network status button for about seven seconds to print the network status sheet. Use your computer or wireless device to select the Wi-Fi network name (SSID) and password listed in the Wi-Fi Direct section. You should now be able to print your product directly from your computer or device. If correct printing is not possible, repeat the above process and make sure to enter the password exactly as it is written on the network. Note: If the router has a wireless network and Wi-Fi Direct, see diagrams 5 and 6. If you are using a wireless router with standard settings, the label contains the SSID and Word permission. If you don't know the SSID and password, check your wireless router's documentation.



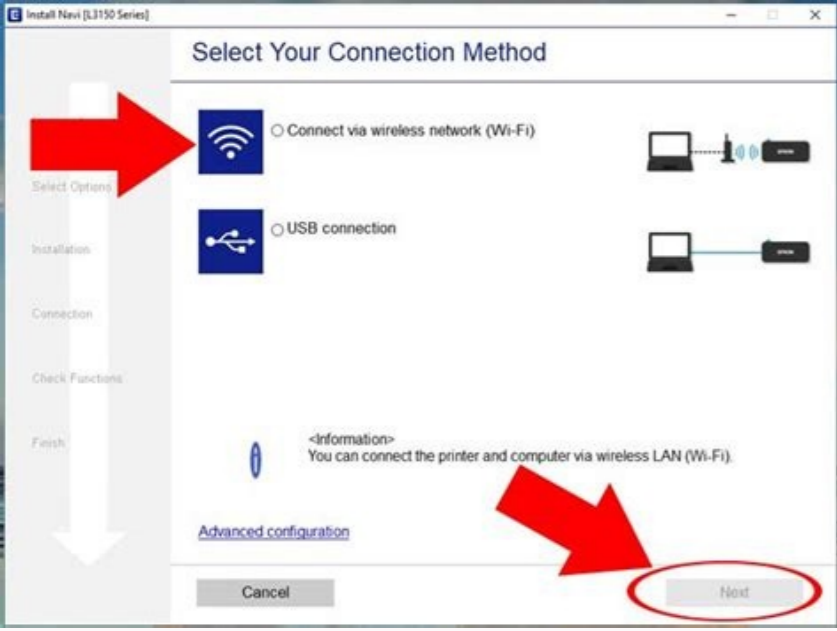
You can change the default Wi-Fi Direct password to improve the security of your Wi-Fi Direct connections. NOTE: If you change the Wi-Fi Direct password, you will not be able to use the built-in NFC feature to connect to the product. If you already have devices or a computer connected to your product via Wi-Fi Direct, changing the password will disconnect them.



Press the arrow keys to select the Wi-Fi configuration and press the OK key. The following screen appears: Select direct Wi-Fi configuration and press the OK button. Select the connection configuration and press the OK button. Select "Edit Password" and press the OK button. P'Ag's to activate direct Wi-Fi mode so that you can share data between the product and your computer or other devices without road or wireless access point. Before you start, make sure the paper is loaded. Note. If you print from a computer, make sure that network software is installed as described on the page to start here. Continue to press the Wi-Fi button and the network status button until the Wi-Fi and Wi-Fi Direct warning lights are starting to flash alternately. Then release the two buttons. When the two lights stop flashing, the direct Wi-Fi light remains on. To print a network status page, keep the network status button for about seven seconds. In the Wi-Fi network name section (SSID) and password of the network status page on your computer or wireless device, under direct Wi-Fi. You can now print your product directly from your computer or device. If you cannot print properly, repeat the above process and make sure to enter the password exactly as indicated on the network status page. Note: Wenn der Drucker Bereit Mit Einem Drahtlosen Netzwerk Verbunden Ist und Das Ger \ XC3 \ XA4T Eine Wi-Fuktion Hat, \ XC3 \ XBCBERPRINGEN SIE Thread Schritte 5 and 6. The password Figure on the label. If you do not know the SSID and the password, see the documentation provided with your wireless connection.

To make direct Wi-Fi more secure, you can change the Direct Wi-Fi password by default. NOTE. If you change the Direct Wi-Fi password, you will not be able to use the integrated NFC function to connect to the product. If you have already connected your devices or computers to the product via direct Wi-Fi, they will be disconnected when you change the password. Use the arrow buttons to select Wi-Fi configuration and press OK. See this screen: Select "Configure Wi-Fi Direct" and press the "OK" button. Select the connection setting and click OK. Select Change the password and P.To enter numbers or change the case of letters, click the Stop button. To delete the previous character, press the left arrow key. To enter a space, press the right arrow key.

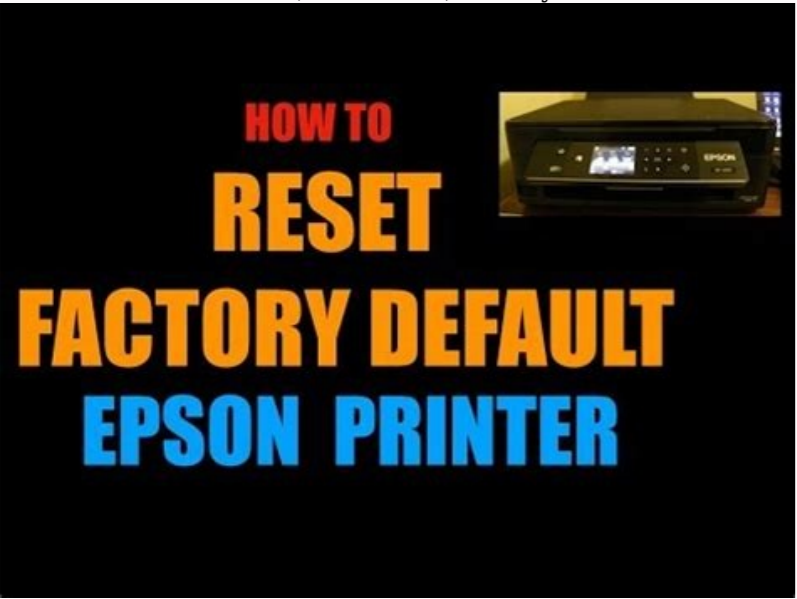
When you have finished entering your password, click OK. Click the up arrow button.



This screen will appear: Click OK to view the SSID (Wi-Fi network name) and password.

Using a computer or wireless device, select the Wi-Fi network name (SSID) displayed on the LCD screen and enter the password displayed.

Click the Back button to exit. An AP or D connection icon will appear on the LCD screen and you should be able to print directly to the product from your computer or device. Note. If the AP or D connection icon does not appear on the LCD screen, Wi-Fi Direct mode is not activated. Repeat these steps and try again. When connecting from a smart device via Wi-Fi Direct (for Android) When you use an Android device and connect to the printer via Wi-Fi Direct, the light and the printer light flash at the same time. Click the button to authorize the connection request. Click the button to reject the connection request.



On many Epson printers, you can also view the printer password via the on-screen control panel and change it if necessary. For some Epson printers, you can find the password on a label on the bottom or back of the device, or even in the user manual. You can also see it directly on the screen. Default password for Epson printers. Please note the following when using an Epson printer password. The username is usually blank. The default password for Epson printers is "admin". The reason for using such a password is that many printer manufacturers want to protect their web servers and administration areas from unauthorized access. After a factory reset, the original default password will be used again. On some Epson printers The word of printing Epson was usually replaced there. Conclusion: simply indicates the EPSON password that can easily remember. There is a " administrator "and is introduced directly to the printer without user names. If you want, you can too much print with a message of state. There are several options. Further information can also be found in the operating instructions of the corresponding Epson printer. The Epson printing material is sufficient to select the material of the desired consumption: the default value of the manager's passage is on the label on the label Label the product itself printed because it is in the drawing. The position in which the label is connected depends on the product, for example on the page on which the cover is open, the following image is an example, to place the label on the side of the printer in which the coverage opens. If both labels (1) and (2) are connected, the value is the standard value next to the password stored on the label in (1). In this example, the default value is 03212791. If the letter is connected (2), the serial number printed on the label in (2) is the default value. In this example, the standard value X3B8153559 is. X3b8153559.

