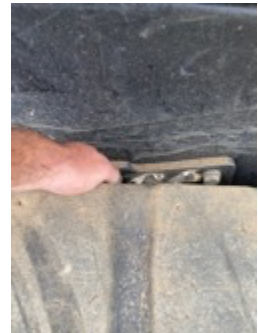
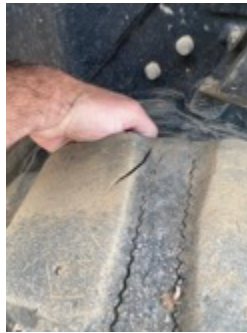
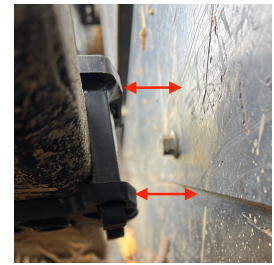


# Checking for FullTrack Chain Clearances

Run your fingers along the top of your track between the inside track edge and the cab



Cup your fingers under the track and slide them along from the rear idler to the front idler making sure your fingers DO NOT hit or rub across any obstacles including the main drive housing, hydraulic hoses, bolt heads and/or brackets protruding from the cab



**!!!IMPORTANT!!!: Check the clearance around your main drive housing especially the gap between the underside of the track and top of the drive sprocket or shroud. Run your fingers underneath your track to be sure to clear your main drive sprocket housing. CinchTrax™ devices need ~1/2" to 3/4" of clearance.**



Our FullTrack Chain devices need approximately 1/2" to 3/4" of clearance all the way around the inside track edge from your cab and from any hoses, bolts, nuts, and drive sprocket shroud. CinchTrax™ offers custom made devices for those machines limited with clearance issues. **CinchTrax™ is not responsible for damage to your machine or the CinchTrax™ device due to not properly checking your clearances prior to use.**

If you have any questions regarding clearance issues or customization for your track, please call or email us at (208) 274-4110 or [John@cinchtrax.com](mailto:John@cinchtrax.com)