

# Cold Therapy Knee Brace

INNOVATIVE  
DME

## INSTRUCTIONS FOR USE:

### QUICK FITTING, UNIVERSAL, RANGE-OF-MOTION FITTING INSTRUCTIONS.

Embrace comfort and convenience with its breathable cotton material, ensuring a soothing recovery. Tailor the perfect pressure with the adjustable compression device, personalized to meet your specific needs. Enjoy effortless application and removal using the convenient hook-and-loop straps, putting you in control of your healing process. Elevate your recovery with two reusable gel pads, offering the benefits of cold therapy to reduce pain and swelling.

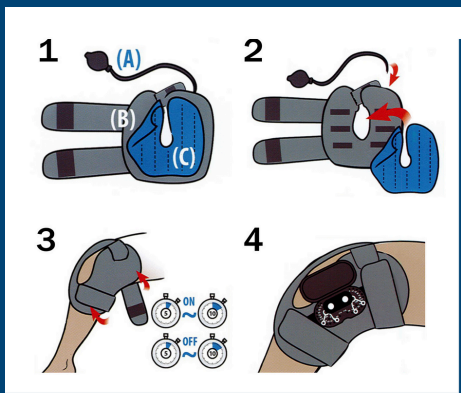
### CLEANING INSTRUCTIONS:

- Hand wash with mild detergent.
- Rinse and air dry.
- Do NOT use bleach.



## INSTRUCTIONS:

1. Check the parts (A) Pump with tube, (B) Cold therapy knee brace, (C) Ice pack. Place ice pack in freezer for at least 2 hours prior to use.
2. Place ice pack back inside the brace after freezing. Connect the tube to the ON/OFF valve and turn to "ON."
3. Position the brace so the hole appears at the knee joint. Wrap the hook and loop straps to secure in place. For the best results: ON for 5-10min, OFF for 5-10min.
4. To adjust flexion and extension control, access the deluxe hinge and insert pins to desired settings of the prescribing physician.



### PLEASE NOTE:

The Cold Therapy Knee Brace is designed for support and does not guarantee injury prevention. By using this product, consumers or patients acknowledge and agree to the following:

Innovative DME is not responsible for any injuries that may occur during the use of Innovative products.

Skin irritation is a potential side effect when using this device. If you experience an unusual skin reaction, it is essential to consult with your healthcare provider immediately.

Always consult your healthcare provider to ensure that this product is suitable for your specific medical condition and needs.

This product is intended for use by a single patient only.

Federal law restricts the sale or distribution of this device to licensed healthcare practitioners or use under their order.

If you do not agree with these conditions, please contact your healthcare provider before using this product.