

Advantages of TCSF Premium Connection

We provide a high-quality affordable premium connection that has been proven to excel in the most rigorous of applications. The thread and seal design of our semi flush connection allow for optimum connection strength while maintaining minimum wall thickness. Higbee blunt start used to reduce thread damage and prevent cross threading. Dual lead for faster make-up.

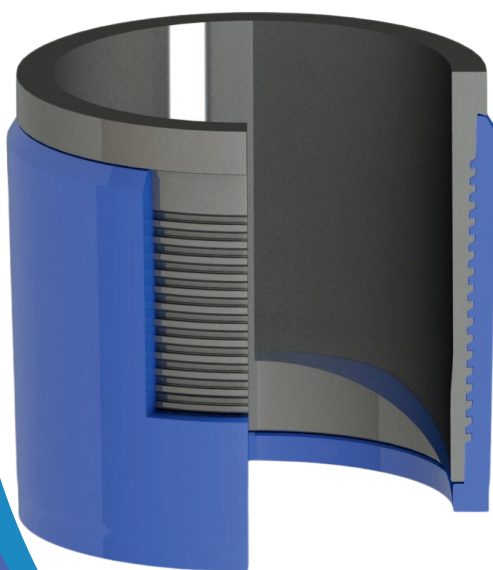
*Available in sizes
2 3/8" to 9 5/8"
All grades*

Semi-Flush Technology

- Cylindrical tapered threads efficiently make up the connection with minimal torque allowing for multiple make and breaks reserving the majority of torque build-up for the pin-nose design: the axial metal-to-metal seal and the negative torque shoulder.
- The pin-nose and the box-nose interact with their corresponding negative angle torque shoulders simultaneously, creating maximum torque capacity.

Applications

- Horizontal & Extended Reach Wells
- Geothermal Wells
- Production Casing & Tiebacks
- Intermediate Casing
- Suitable for Stainless Steel Applications



- Negative angle torque shoulders reduce possibility of jump-out under high compressive load.
- Both pin noses interact with their corresponding torque-shoulder concurrently, creating maximum torque capacity.
- Interference between pin and box creates two gas-tight axial seals, an internal and an external, which are both pressure-assisted.
- Negative load-flank angle for minimal chance of jump-out through tension.
- Longer thread length for better resilience in bending down-hole.
- Free running until 1- 1/2 to 2 turn full torque make-up.



H.I.S.

HOUSTON INTERNATIONAL SPECIALTY, INC
PREMIUM CONNECTIONS

Address: 19996 Hickory Twig Way
Spring, TX 7388

Email: sales@histcpc.com

Phone: (281)602-7550