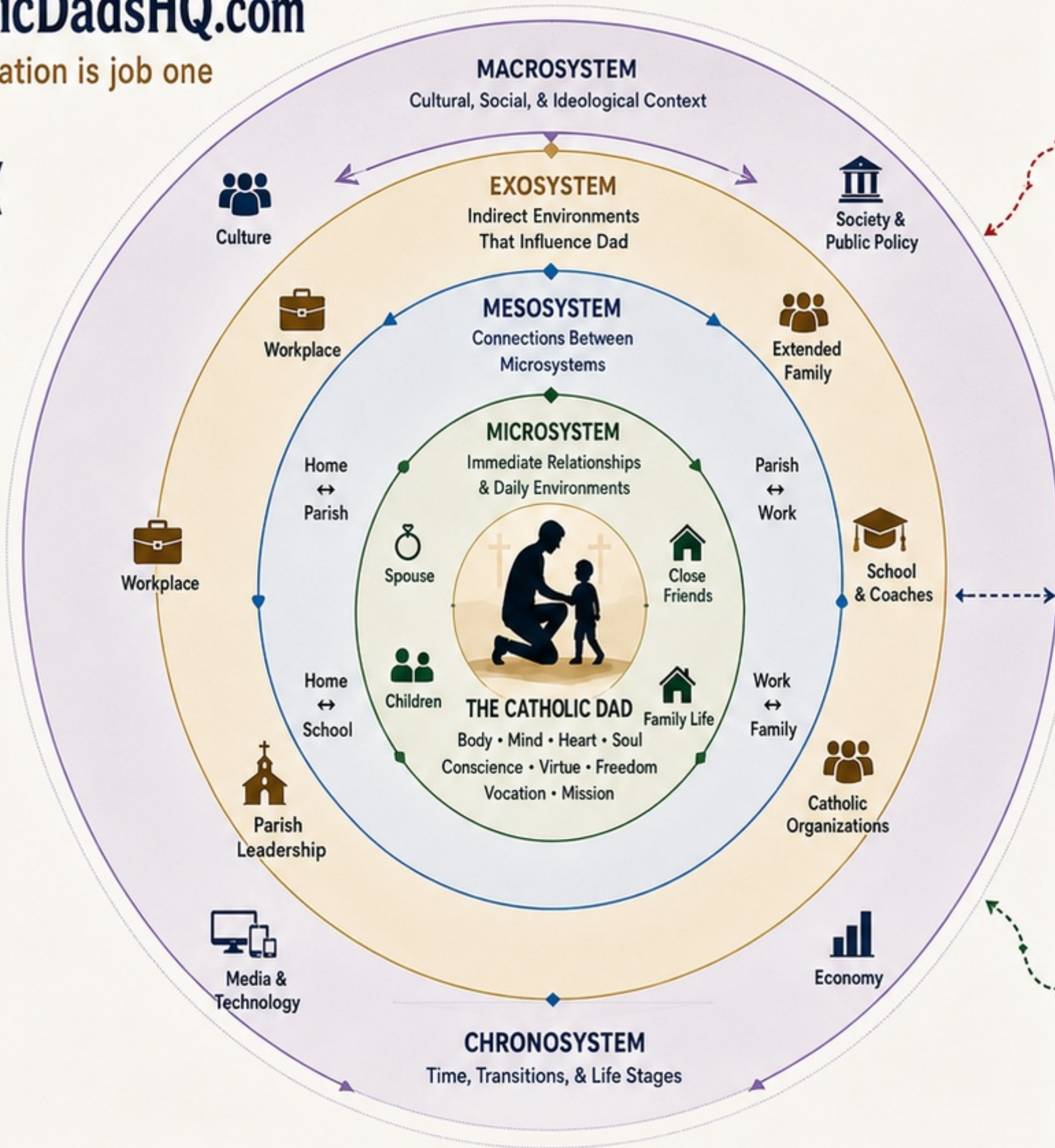




### PRESENTS BRONFENBRENNER'S ECOLOGICAL MODEL FOR CATHOLIC DAD EDUCATION

A lifelong formation framework showing how Catholic dads are shaped by their environment—and how, through reflection and microchange, they can align their thoughts and behaviors with their evolving values as they age.



**IF NOT EXAMINED:**

**RISK OF DRIFT**

Unexamined thoughts and habits can become fixed over time, leading to misalignment, stagnation, and unhealthy patterns that impact your family, relationships, and spiritual life.

**STABILITY OVER TIME**

When environments are healthy and supports are strong, the model helps dads remain stable and faithful through the seasons of life.

**GROWTH & CHANGE**

When you examine your thoughts and behaviors and adapt over time, the model becomes a pathway for growth, deeper virtue, and legacy.

**THE GOAL**

To become the man, husband, father, and leader God is calling you to be—living in alignment with your vocation and evolving values.

### MICROCHANGE, LEADS TO SUBSTANTIVE CHANGE. *Edward L. De La Loza*



**ROOTED IN CHRIST**

Every layer of a dad's life is redeemed and elevated through grace, the sacraments, and union with Jesus Christ.

*"I am the vine, you are the branches."*  
John 15:5

