

Limpley Stoke

news

Issue No 30

October 2020

Read all about your village's history

An exciting new village project has come to fruition, thanks to a team effort by local volunteers fronted by Tom Harper. The Limpley Stoke History and Natural Environment information board, which has been put together over the past few months, includes contributions from people who loaned history records and offered local insights, as well as beautiful illustrations by local artist, Cathy Adeane. The board, which is aimed at both locals and visitors, reflects the history of a village – its timeline beginning in the Neolithic period – inhabited by resourceful and adaptable folk who overcame many challenges and setbacks and continued to flourish.

The natural environment section features details and illustrations of local flora and fauna and their habitats.

The board has been part-funded by Limpley Stoke Parish Council, FLiSCA, Cotswolds National Landscape (formerly Cotswolds AONB), and a donation in memory of former residents, Brian and Elizabeth Coombe.

The colourful and informative board will be installed shortly in the King George V play park on Woods Hill. Additional boards will be appearing in other parts of the village in due course.

Important historic, downloadable documents have also been added to the village website (<https://limpleystoke.org/signpost>), with the authors' permission. This web address is also linked from the embedded QR code on the sign.



The new **MyWilts online reporting app** has launched (replacing the *MyWiltshire app*). Use it to book Wiltshire Council services and report a range of issues, including:

- potholes
- fallen trees
- road issues
- grit bins
- weather emergencies
- fly-tipping

More services will be added over time, making it simpler, quicker and easier for you to access council services digitally.

When you register for an account, you will receive updates as your reported case progresses. If you choose not to register, you can submit cases anonymously but will not receive progress updates.

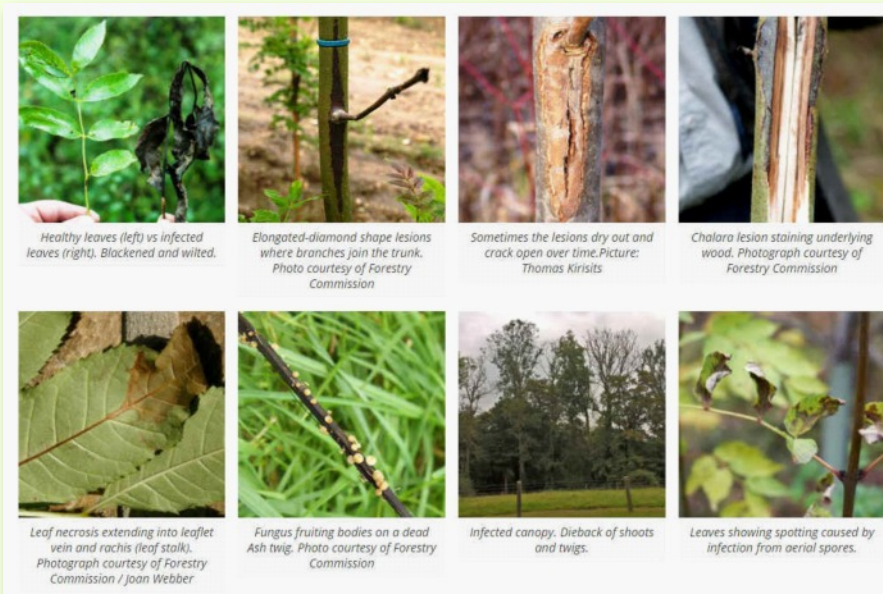
Visit my.wiltshire.gov.uk.

Ash disease affects Limpley Stoke Valley

Ash trees – and their branches – have started to fall, without warning, in our valley. Limpley Stoke Parish Council is interested to hear from anyone who has trees affected by ash dieback (email environment.lspc@gmail.com). DEFRA also asks that cases be reported to them (phone 08459 335577 / 01626 773499 or email info@ashdieback.co.uk).

Ash dieback can affect ash trees of all ages but younger trees succumb to the disease more quickly. All affected trees will have these symptoms:

- leaves develop dark patches in summer which then wilt and discolour to black and may shed
- early dieback of shoots and leaves is visible in the summer
- lesions, which can be diamond-shaped and dark brown, develop where branches meet the trunk and inner bark looks brownish-grey underneath
- new growth appears from previously dormant buds at the base of the trunk, known as epicormic growth and a common response to stress in trees



Ash is the third most common tree in Britain so we stand to lose a third of an ecosystem as well as living organisms which sequester carbon dioxide from the air. The UK is already one of the most de-forested countries in the world. Although a little too late for this year, the best time to survey is July to September as, once autumn begins, the normal seasonal change in leaf colour can be mistaken for disease symptoms.

What you should do

If you own infected ash trees, you are not legally required to take any action unless served with a statutory plant health notice. Do not fell infected trees **unless for public safety** or planned woodland management, as there is evidence a small proportion will be able to tolerate and recover from the disease. Where appropriate and safe, leave standing dead trees for their deadwood value for biodiversity. Leaving high stumps is an alternative approach, reducing risk while retaining deadwood habitat. Watch for basal lesions or fungus near the bottom of the trunk which can weaken the tree and make it more likely to fall. Felling near a highway will require liaison with the local highways authority. Also be aware of the requirements of protected species and their habitats, for example active bird nests or bat roosts. See www.gov.uk/guidance/tree-felling-overview.

Consider pollarding ash trees as an alternative to felling. Avoid cutting ash-dominated hedgerows during summer months and the bird-breeding season, when the spore production from dead leaves on the ground is highest and disturbance might increase dispersal.

Cotswolds National Landscape (*formerly Cotswolds AONB*) suggests establishing replacement trees of suitable native species. Oak, beech, lime, field maple, and hazel reflect the character of the area and provide the best hope for the future of the landscape. For smaller specimens, the Woodland Trust suggests crab apple, rowan and silver birch.

<https://ashdieback.co.uk/>

<https://www.woodlandtrust.org.uk/search/?q=Ash+dieback&p=1>

<https://www.cotswoldsaonb.org.uk/?S=>



The Scallop Shell restaurant brings its award-winning fish and chips to Freshford Village Memorial Hall **every Tuesday from 4.30–8pm**. Customers can order for their preferred time slot via the website or in person on the day (www.thescallopshell.co.uk/on-the-road/).



Bianco Rosso Pizza Co

Vito's famous pizzas are available from Freshford Memorial Hall on **Wednesday and Friday evenings** each week from 5–8.30pm. To order, phone 07872 335120.

Sunday opening for Galleries shop

In another small step towards normality, the Galleries shop will be open on **Sundays** again from **October 4**. You can now order your Sunday newspapers or just turn up at the shop.

The café is not open yet but watch this space!

BoA library reopens

Bradford on Avon library has reopened. You still won't be able to drop in but an order-and-collect service has been set up to provide access to books. You can also book computer use for up to 45 minutes. It is hoped people will be able to browse at the library in due course. For more details, including online form, visit www.wiltshire.gov.uk/libraries-order-collect.

WASTE COLLECTIONS

Household waste

Monday, October 5
Monday, October 19



Blue-lidded bin

Black box

Green waste
(chargeable)



Wednesday, Oct 7
Wednesday, Oct 21

Useful numbers

Transport Link 07714 16 92 16
Power supply emergency 105
Police (non-emergency) 101
Bradford on Avon Police:
Andrew MacLachlan
0752 897 2236
andrew.maclachlan@wiltshire.pnn.police.uk

MP: Michelle Donelan
01249 704465
michelle.donelan.mp@parliament.uk

Wiltshire Unitary Councillor:
Johnny Kidney 07805 236 480
johnny.kidney@wiltshire.gov.uk

Editor: Limpley Stoke News
Sheena Broadhead
01225 723404
sheena.broadhead@tiscali.co.uk

LSPC Clerk: Bryony Kohn
01225 723749
bryony.kohn@gmail.com

MyWilts app: potholes, road issues, blocked drains, grit bins
www.wiltshire.gov.uk/mywilts-online-reporting or phone 0300 456 0105



Mobile library monthly visit:
CANCELLED until further notice

Website: www.limpleystoke.org

[Limpley Stoke Community](https://www.facebook.com/LimpleyStokeCommunity)
 [@LimpleyFolk](https://twitter.com/LimpleyFolk)

Limpley Stoke News is an independent publication, produced and edited by Sheena Broadhead, who reserves all editorial rights. To submit an article, email sheena.broadhead@tiscali.co.uk.