



PROPERLYWORKS

FLEXIBLE SMART INSPECTION!

**PROPERLY WORKS +
TECHNOLOGY= SUCCESS**

**Unlock the future of manufacturing
applications with Properly Works!**

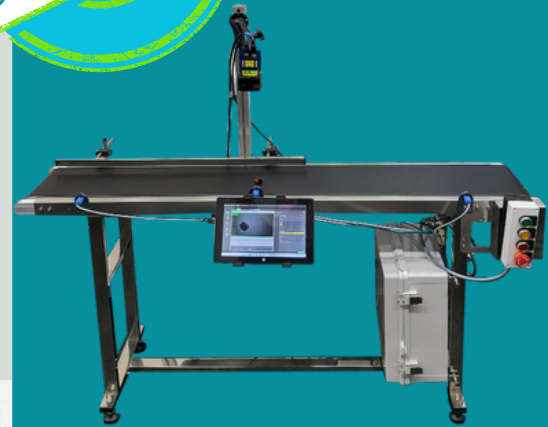
MOTION SYSTEM KIT INCLUDES:

- PLC system
- Cognex 2800 Series AI camera
- Microsoft™ Windows tablet
- Cabling
- Hardware Format: Conveyor System
- System Solutions
 - Automated: Connects w/robotics to provide full system solution
 - Semi-Automated: Connects to Properly Works' Easy-Dash Workstation to deliver guided work instructions, part-specific job selection, & full dashboard with first pass yield, failure data, & exportable info for ERP, MRP, and Quality Systems.
- 80 hours of Properly Works engineering support including:
 - Part Testing
 - Operator Training

*Additional support hours available upon request

APPLICATIONS

- Part Sorting and Counting
- Parts Kitting
- Quality Inspection
- Component & Assembly Verification



KEY BENEFITS:

- ROI IN MONTHS
- IDEAL FOR LOW VOLUME/HIGH MIX & HIGH VOLUME/LOW MIX PARTS
- SEAMLESS INTEGRATION INTO EXISTING SYSTEMS
- QUICK INSTALLATION
- SIMPLE VISUAL OPERATOR INTERFACE
- AI ENABLED VISION SYSTEM
- TEACH COMPONENTS IN MINUTES
- SORT PARTS, FIND BLEMISHES, IDENTIFY PARTS & MARKINGS

**SCAN ME FOR
MORE DETAILS!**

