



IRIS SPENCER: 3214 EAST 65TH STREET, SAVANNAH, GA

NISHA PATEL | INDS 110 SECTION 02 | SPRING 2013 | BROOKS

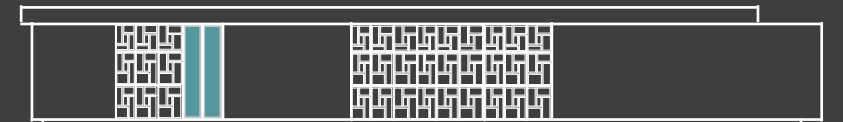


TABLE OF CONTENTS

- RESEARCH ..... 1
  - Mid Century Modern Research ..... 2
  - Site Analysis ..... 3
  - Fiber Site Visits ..... 4
  - Bubble Diagram: Analysis of client and Inspirations ..... 5
  - Client Profile ..... 6
  - Concept ..... 7
  - Final Floor Plan ..... 8
  - Rendered Floor Plan ..... 9
  - Circulation ..... 10
- KITCHEN ..... 11
  - preliminary Kitchen Layouts ..... 12
  - Kitchen System ..... 13
  - Kitchen Elements ..... 14
  - Kitchen Elements ..... 15
  - Kitchen Perspective ..... 16
- COURTYARD ..... 17
  - Preliminary Courtyard Sketch One ..... 18
  - Preliminary Courtyard Sketch Two ..... 19
  - Final Courtyard design ..... 20
  - Final courtyard Design ..... 21
  - Courtyard Rendered Perspective ..... 22
- BEDROOM ..... 23
  - Master Bedroom ..... 24
  - Guest Bedroom Design ..... 25
- BATHROOM ..... 26
  - Preliminary Bathroom Layouts ..... 27
  - Final Master Bathroom Design ..... 28
  - Final Guest Bathroom Layouts ..... 29
  - Powder Room Design ..... 30
- SOCIAL SPACE ..... 31
  - Social Space Initial Selections ..... 32
  - Furniture and Art Work Initial Ideas ..... 33
  - Social Space Layout ..... 34
  - Social Space Rendered Perspective ..... 35
- DINNING ROOM ..... 36
  - Dinning Layout ..... 37
- STUDIO ..... 38
  - Perliminary Studio Layout ..... 39
  - Studio Layout ..... 40

RESEARCH

# MID-CENTURY MODERN RESEARCH

AFTER WW II DESIGN BECAME SIMPLE, CLEAN AND FAST. HOUSES FEATURED SIMPLICITY AND AN INTEGRATION WITH NATURE, ENCOURAGING RESIDENTS TO EXPLORE THE WORLD IN NEW WAYS.

## HARMONY

EAMES HOUSE  
LOS ANGELES, LA  
CHARLES / RAY EAMES  
1949



Harmony: Pleasure of the color balance reflection of their own life style and needs. A place to live, work and entertain. Exterior of facade inspiration of artist mandarin color blocking.

## DISTINCT

GLASS PAVILLION  
NEW CANAAN, CONN.  
PHILIP JOHNSON  
1945-1948



Distinct: Separation, clean, and connection of nature. Pavilion to view surrounding landscape. Overlooks a pond. Blends in outside in with the house by the use of Glass proportion, effect of transparency and reflection. Idea from, German Architecture.

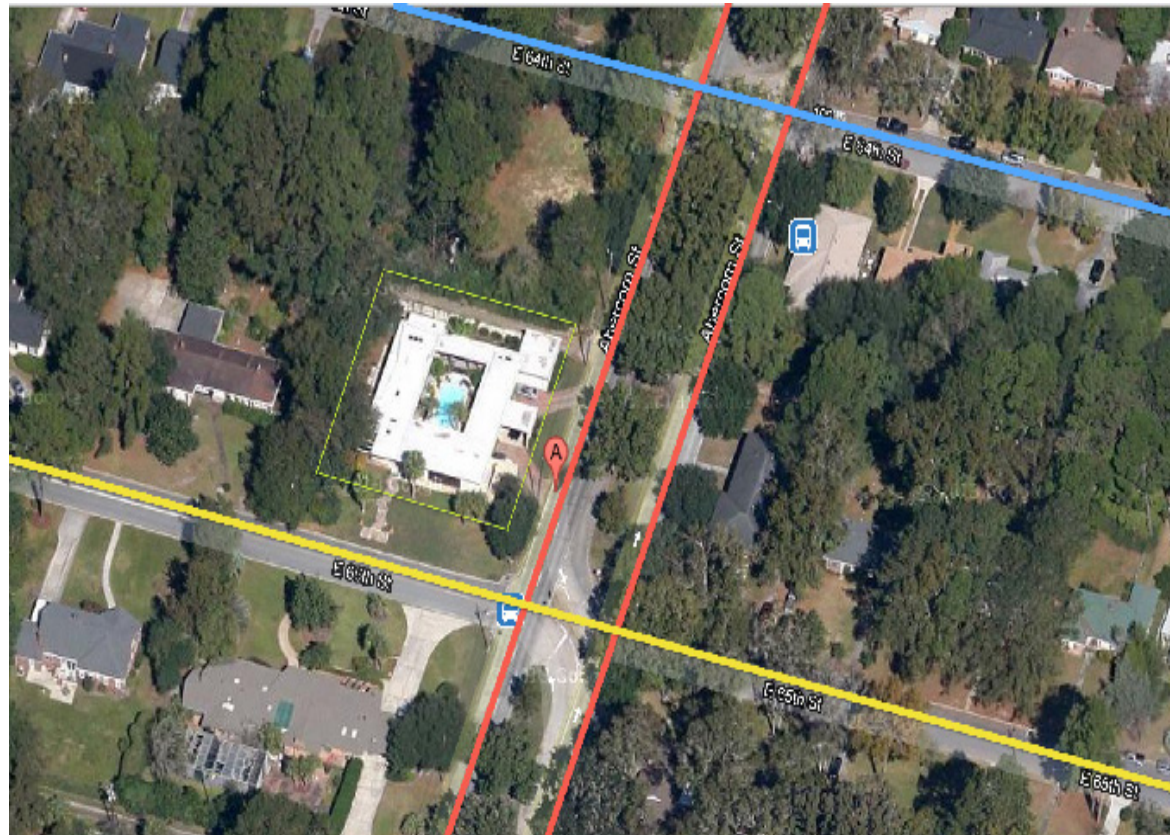
## LASTING

FERRIS HOUSE  
SPOKANE, WA  
BRUCE WALKER  
1955



Lasting: Never ending, organization seems it goes on forever, with the use of parallel wood. Inspiration by Southern w

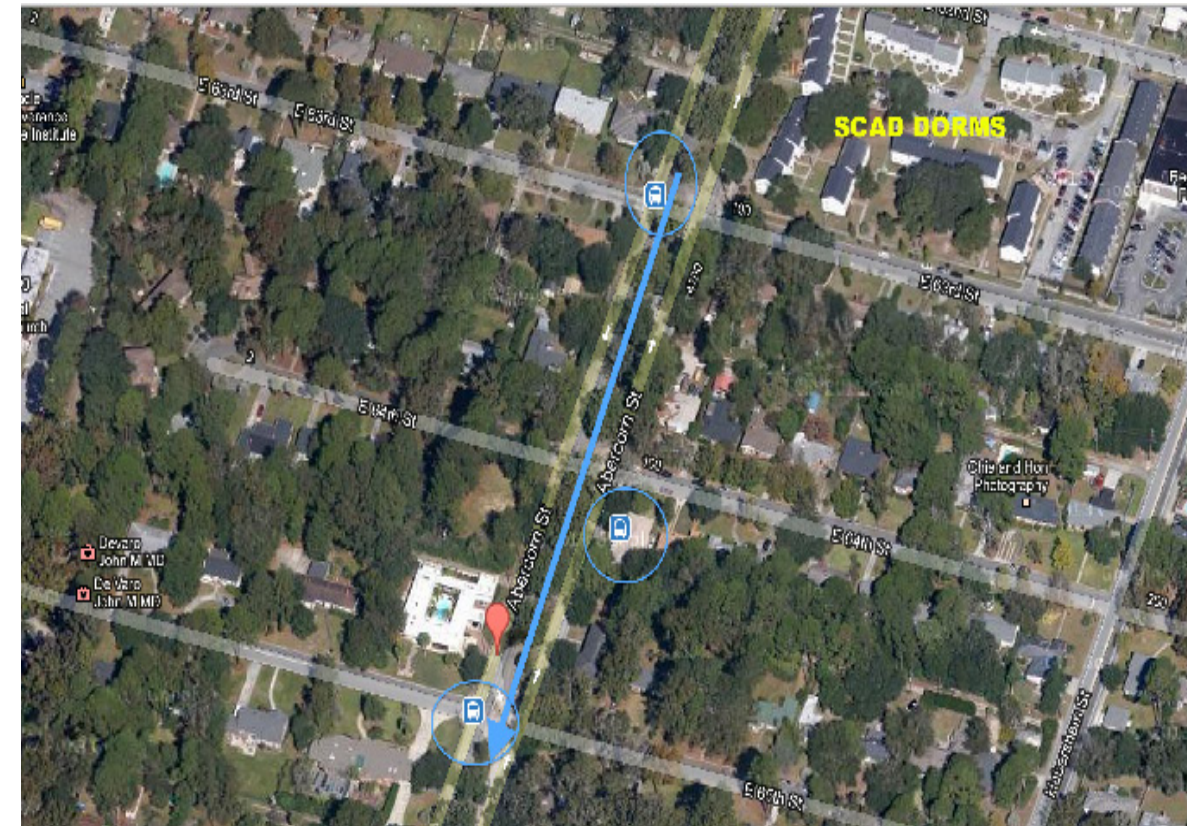
# SITE ANALYSIS



- ABERCORN STREET
- 65TH STREET
- 63RD STREET

NTS

The noise comes from the traffic driving by Abercorn Street which is one of Savannah's busiest Avenue. The organization of the house prevents the noise from coming in the noise. The master bedroom is away from the on going traffic noise. The west side is the most sunniest but since its have a canopy of trees over the garden on the side of the house. The house is facing North side, so the entrance is in sun but the door is hidden under the roof.



— MAIN ROAD AND BUS STOPS

NTS

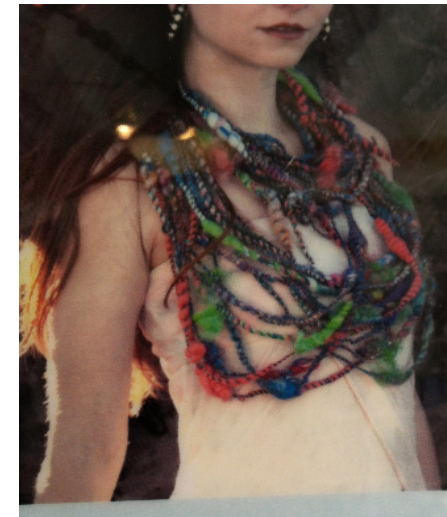
The surrounding consist of many bus stops and its two blocks away from SCAD dorms which are off 63rd street.

## FIBER SITE VISITS



### SCAD FIBER MAJOR BUILDING PEPE HALL

The fiber wall is a elegant piece of art work. It creates a grand entry and a focal point for the interior of the building.



### SAVANNAH FIBER SHOPS FRAYED KNOT UNWIND

The way organizations of the material in shelves creates a more open environment to enjoy the space and fell loose.



# IRIS SPENCER

She was born on September 27, 1967. She is 49 years old. Iris graduated from California College of Art and Crafts with a fiber arts major. Now she owns a yarn and weaving shop. Known for her unusual color combinations and "crazy" texture mixes. She has a huge collection of raw materials. On her free time she likes to walk on the beach, play bingo every Friday, wind surfs, and calligraphies for fun and friends. Iris frequently bird-sits for a African Gray Parrot named Livingstone who sings opera like Pavarotti, every Jimmy Buffet tune and Lady GaGa. Has a collection of 88 pairs of shoes and 32 handbags from all over the world from her travels.



## LIVINGSTONE THE AFRICAN PARROT



## SHOES AND HANDBAG COLLECTION



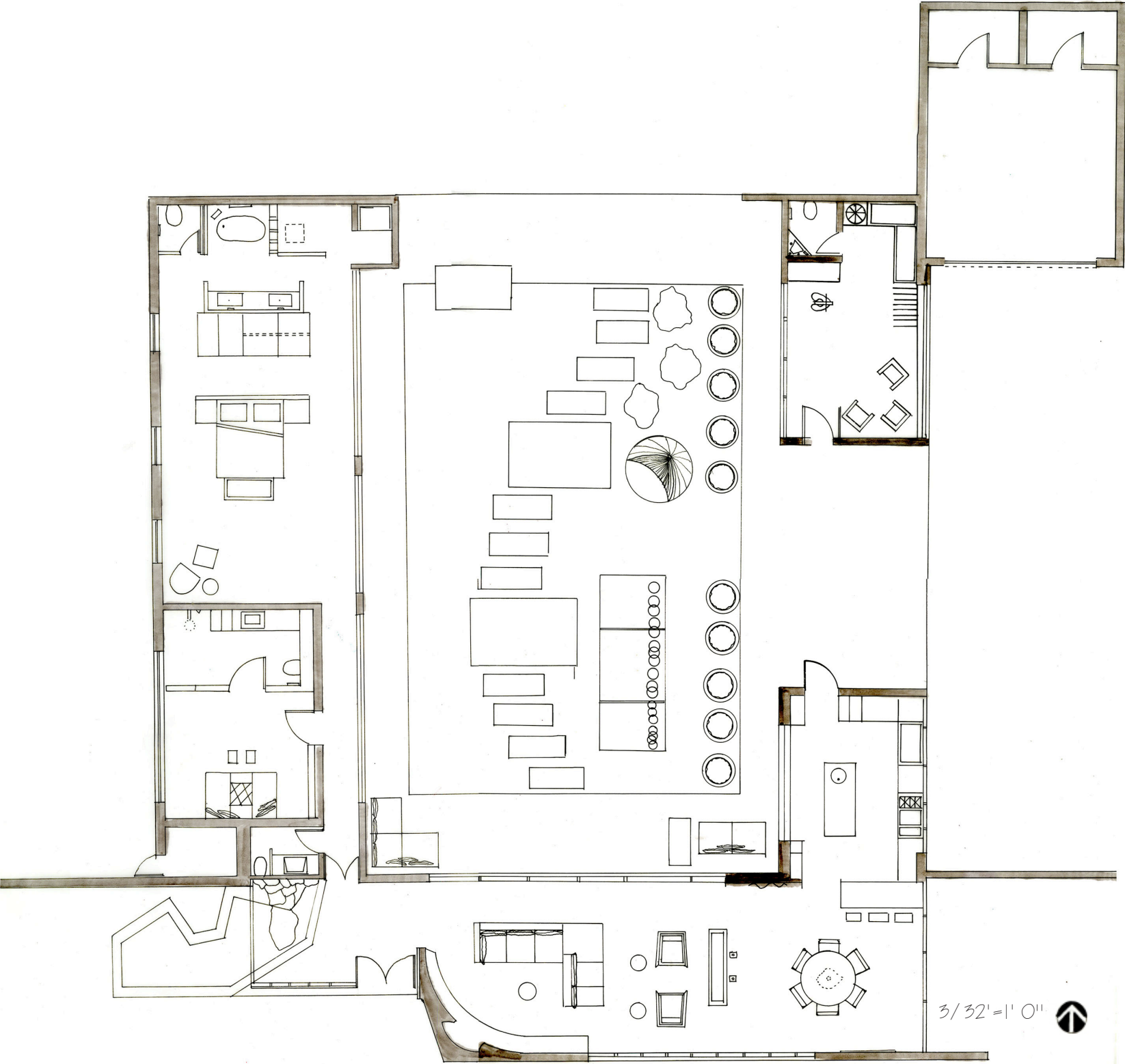
## HOBBIES





"An experiential interior world designed within a Mid-Century Modern house compliments the energetic personality of the client. Through the use of innovative technology and products the house becomes modern."

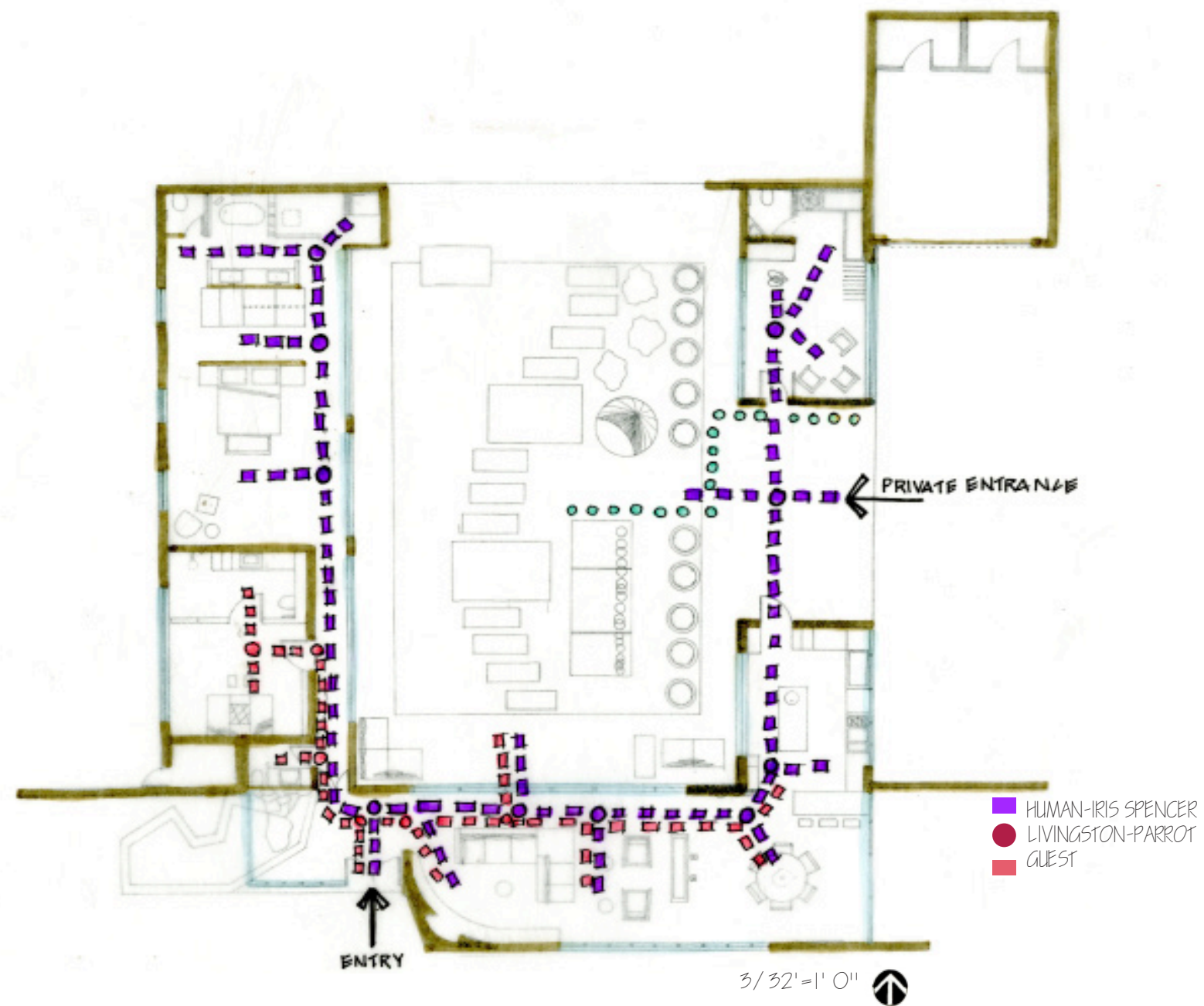
FINAL FLOOR PLAN



RENDERED FLOOR PLAN



# CIRCULATION



A diagram showing the circulation of people and animals throughout the different spaces in the house. Animals tend to be restricted to certain areas of the house. While the owners have freedom to move around, the guests have certain manners they acquire which prevents them from going into private areas of the house unless the owner invited them.

# KITCHEN DESIGN



KITCHEN SPACE IS NOT ONLY A PLACE WHERE PERSONAL TASTE CAN BE CELEBRATED BUT ALSO WHERE DESIGN FITS TO THE CLIENT'S NEEDS.

SieMatic

SURFACES

STAINLESS STEEL



The matte metal fronts with faceted border with a glossiness.

CABINETS

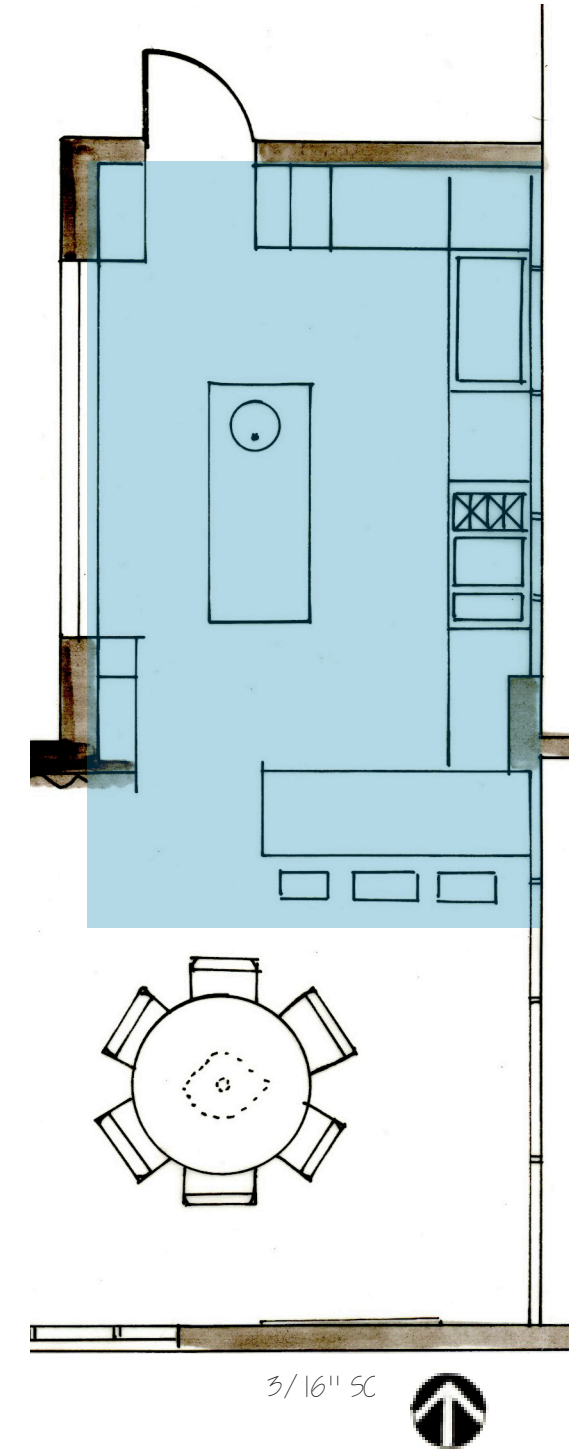
CRYSTAL WHITE HIGH GLOSS



STONE BEECH MATT VENEER

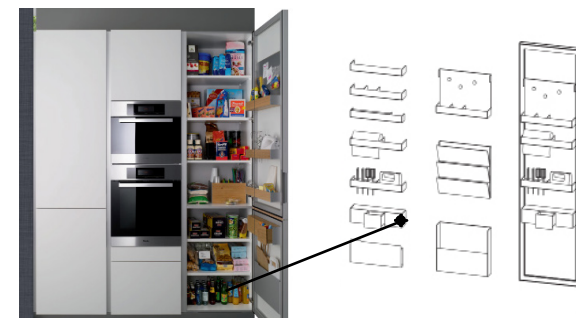
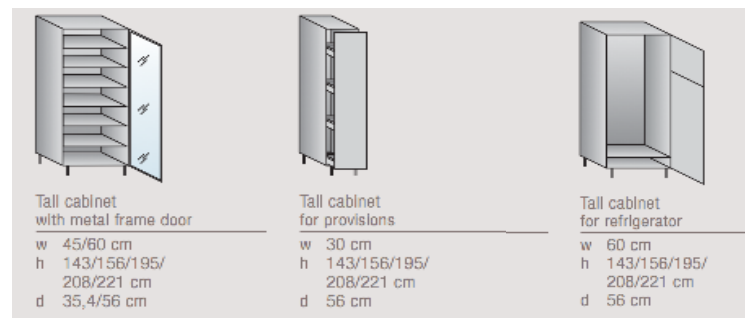


Provides different varieties of possibilities that will best fit the clients personality. Siematic shows their sense of love for detail on the design. The cabinets fused the edges and the surface material together, creating an impression of one massive structure. Occupying all the given space with best possible outcomes of how to substantially use the space.



# KITCHEN ELEMENTS

## TALL CABINETS

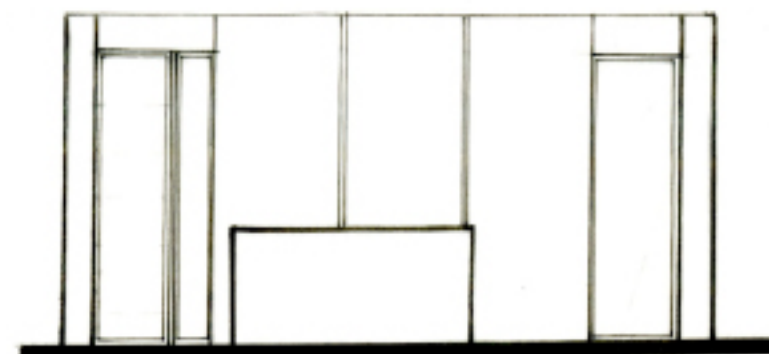


## SHELVES



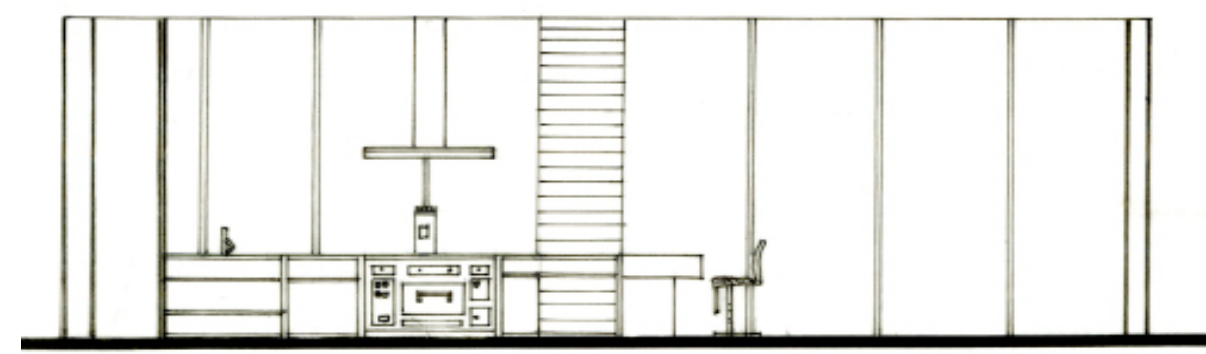
Blue cloud Onyx stone back lighted behind the shelves that come out to the windows. It creates a subtle accent wall for the kitchen from the heavily dark ultramarine stove.

## BASE CABINETS



WEST KITCHEN

3/16'-1' 0" →



EAST KITCHEN

3/16'-1' 0" →



NORTH KITCHEN

3/16'-1' 0" ↻



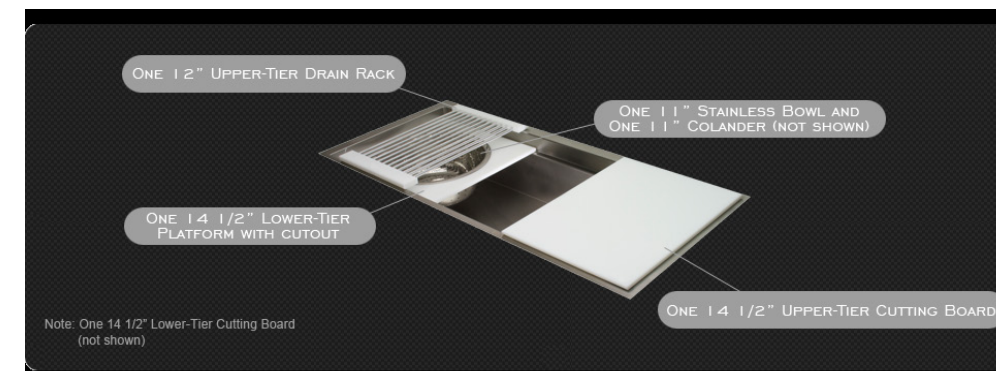
STOVE / OVEN



ELECTROLUX: THE MOLTENI RANGE COOKER

Professional 120     2 open burners with opaque, black enamelled cast iron pan  
 Weight: 120 cm     Gas hotplate  
 Dimension: 70 cm     Static gas oven  
 Height: 90 cm  
 Weight: 380 kg

THE GALLEY SINK



THE GALLEY

Weight: 4'

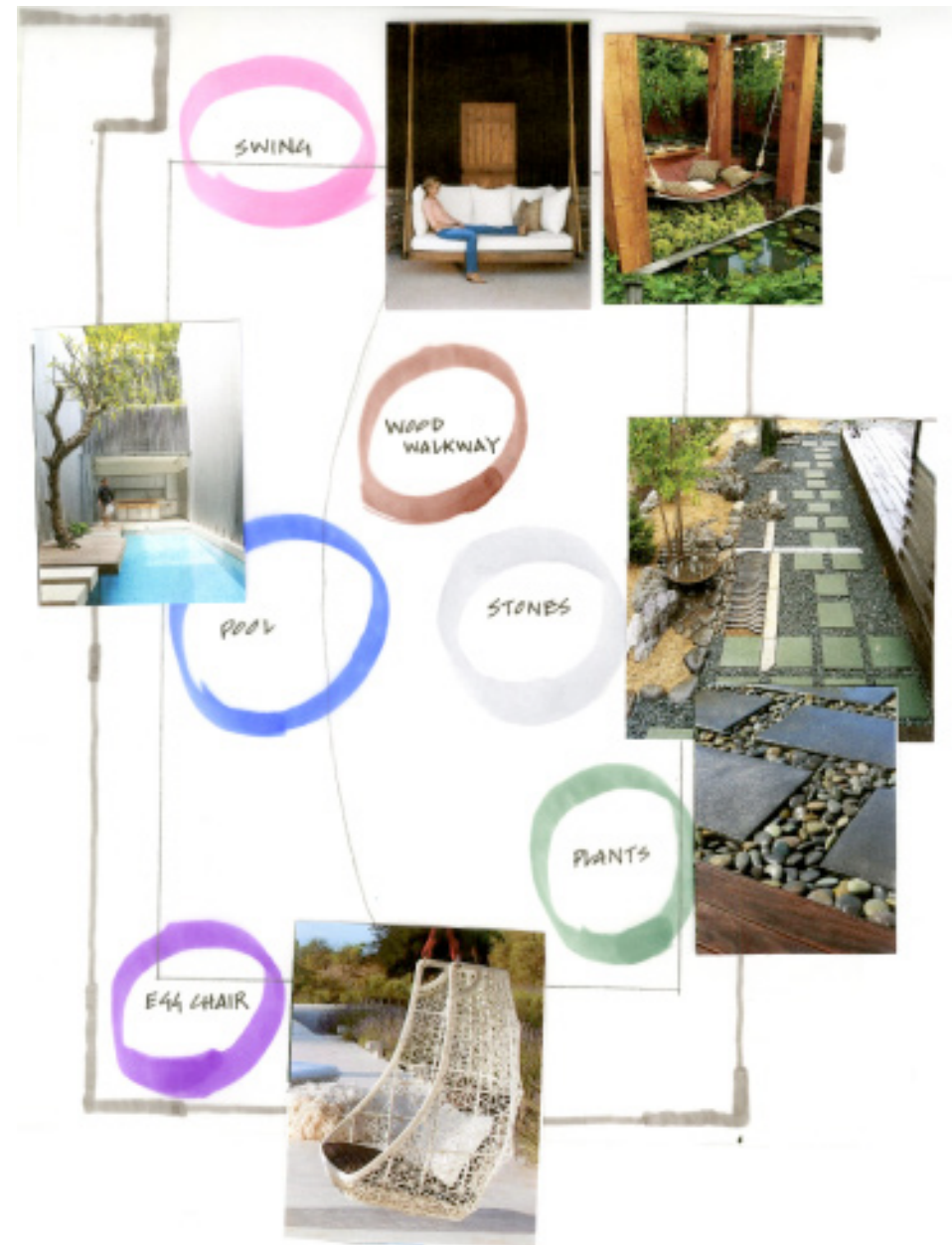
One 14 1/2" Upper-Tier Cutting Board  
 One 14 1/2" Lower-Tier cutting Board  
 One 14 1/2" Lower-Tier Platform with cutout  
 One 11" colander  
 One 12" Upper-Tier Drain Rack  
 One 11" Stainless Bowl

KITCHEN PERSPECTIVE

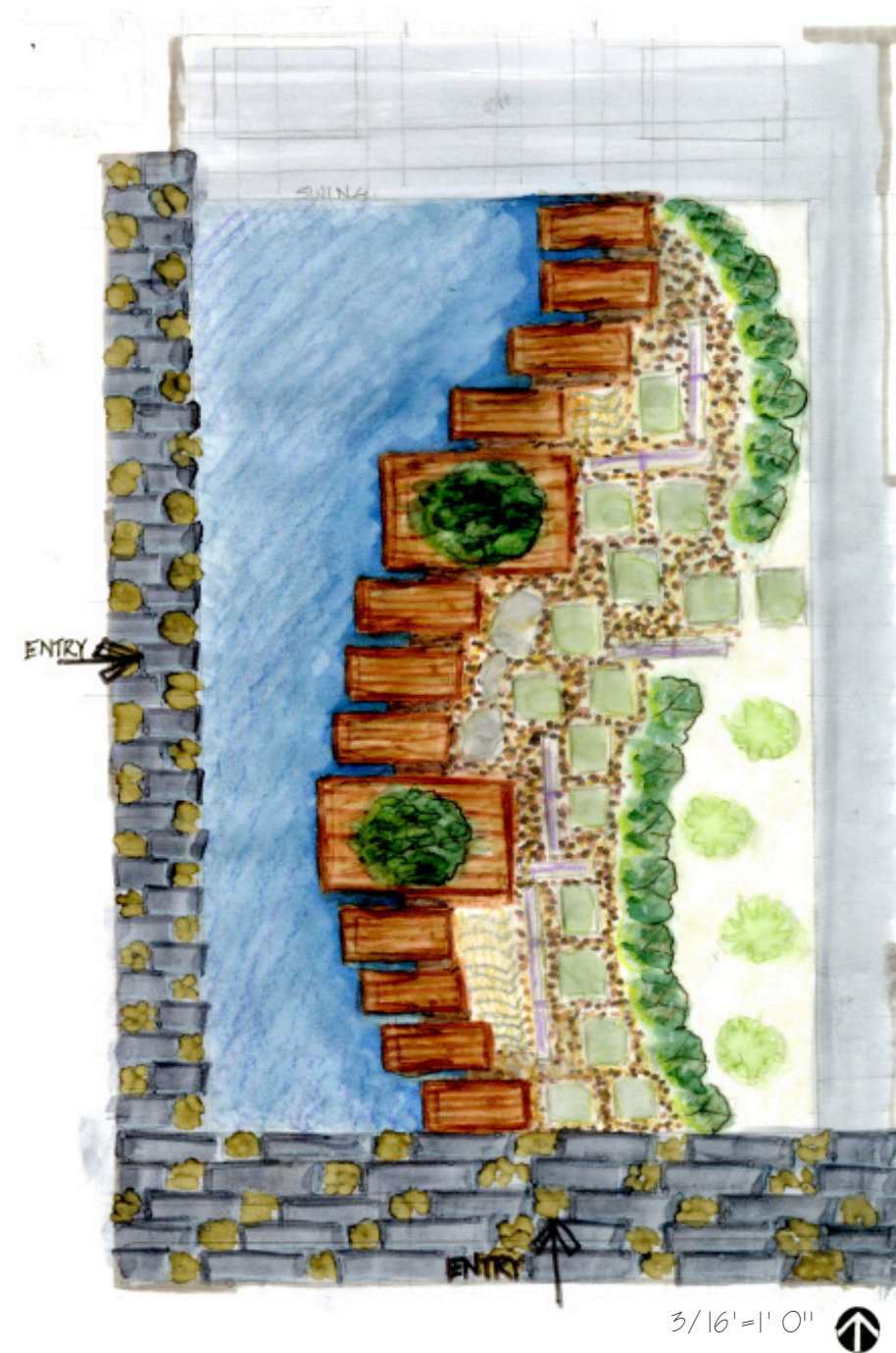


# COURTYARD DESIGN

PRELIMINARY COURTYARD SKETCH ONE



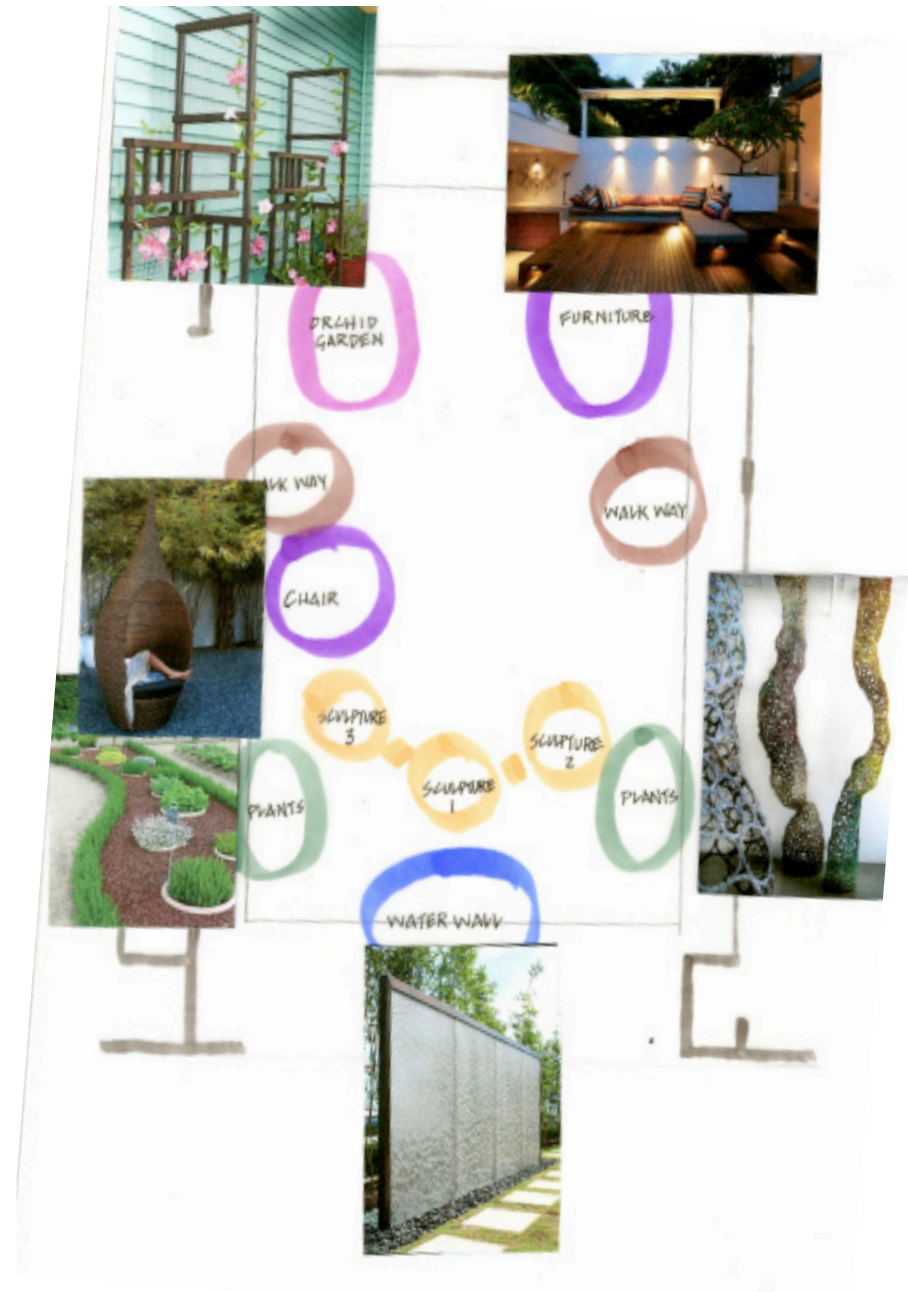
BUBBLE DIAGRAM SHOWING THE ELEMENTS



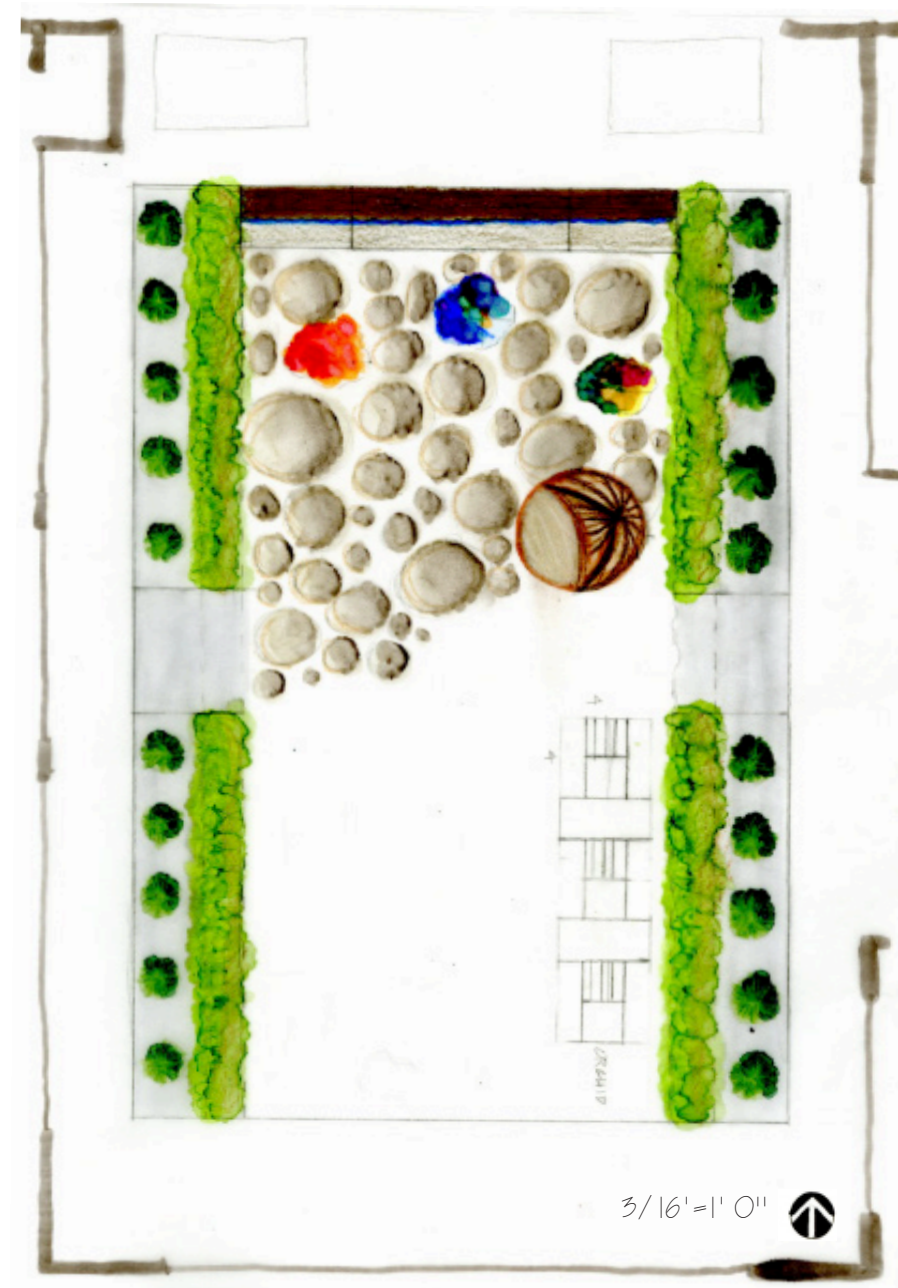
COURTYARD ONE RENDERING

The nice curvature shape that is created by the pool and the wooden walkway is pleasant to the eyes. The final layout for the courtyard has the formal shape of this preliminary sketch. Also incorporated the was shaped pool with the adjacent walkway.

PRELIMINARY COURTYARD SKETCH TWO



BUBBLE DIAGRAM SHOWING THE ELEMENTS



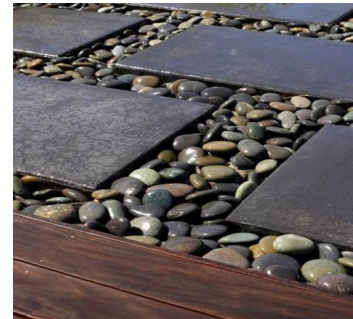
RENDERING TWO

This preliminary sketch shows a lot more of the client's personality with the fun colorful wire fiber sculpture. Iris's orchid collection has a custom green house. The egg shape lounge chair where she can relax and enjoy the view of her beautiful house. This courtyard was very symmetrical and up type and did not allow loose irregularity flow through the courtyard.

FINAL COURTYARD DESIGN



SWING



PAVING



POOL



COUCH



3/16" = 1' 0" ↑



SCULPTURES



CHAIR



FLOORS



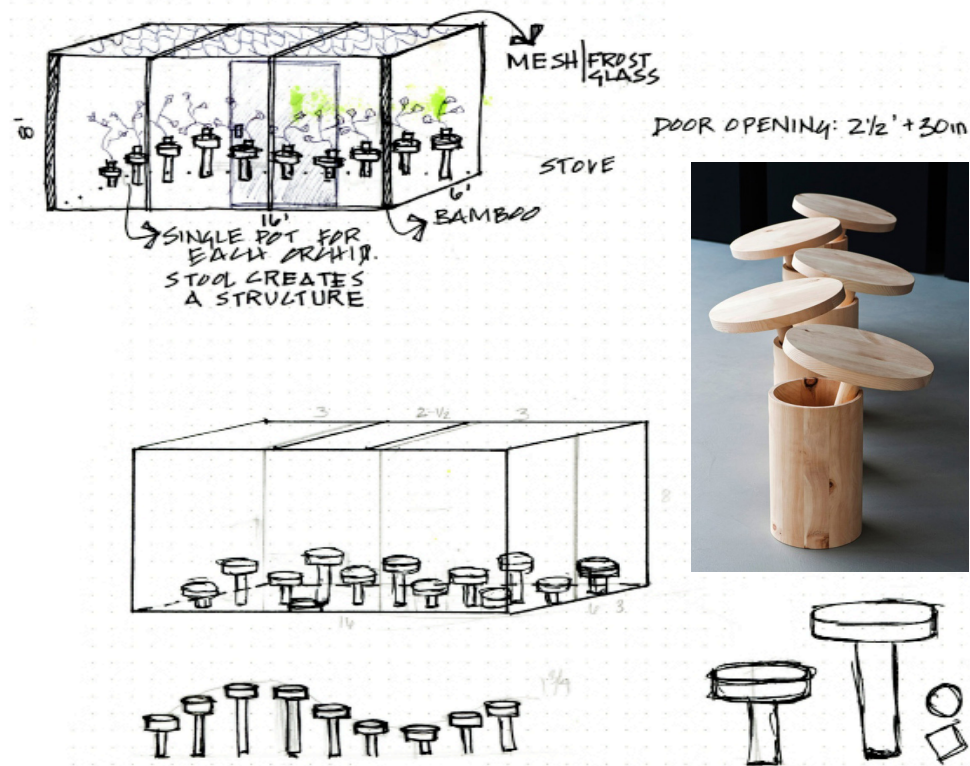
HERBS



ORCHID HOUSE



CUSTOM ORCHID GREEN HOUSE



The structure is created by the use of four frosted glass sliding doors. The roof is also made from frosted glass but has a layer of mesh on the interior from protection from the harsh sun light. The overlapping stools create a sculptural element and provides a stool for the orchids.

HERB GARDEN

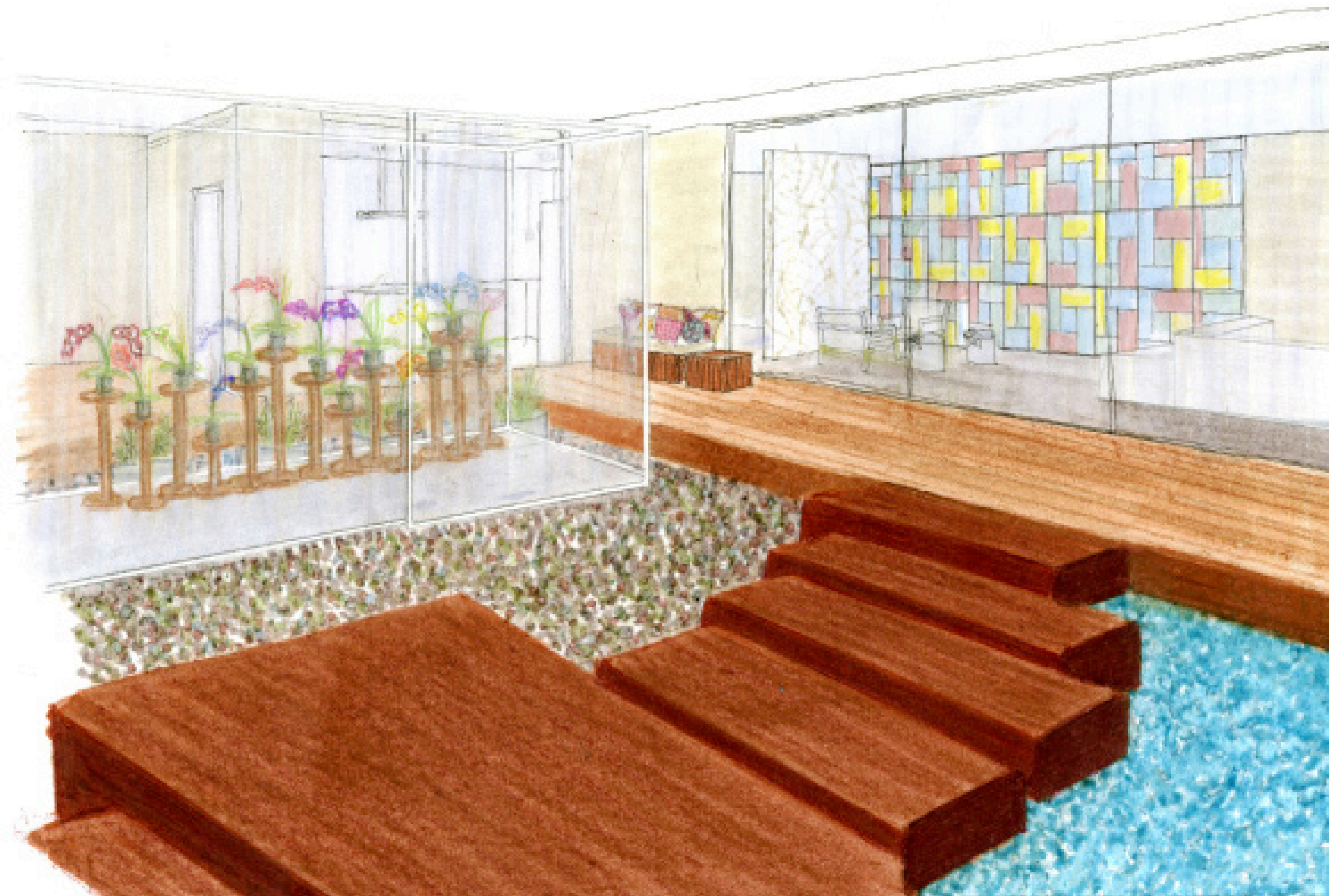
- BASIL 
- MINT 
- OREGANO 
- PARSLEY 
- ROSEMARY 
- SAGE 
- TARRAGON 
- THYME 

FIBER SCULPTURE



MADE FROM COLORFULL WIRES.

COURTYARD RENDERED PERSPECTIVE





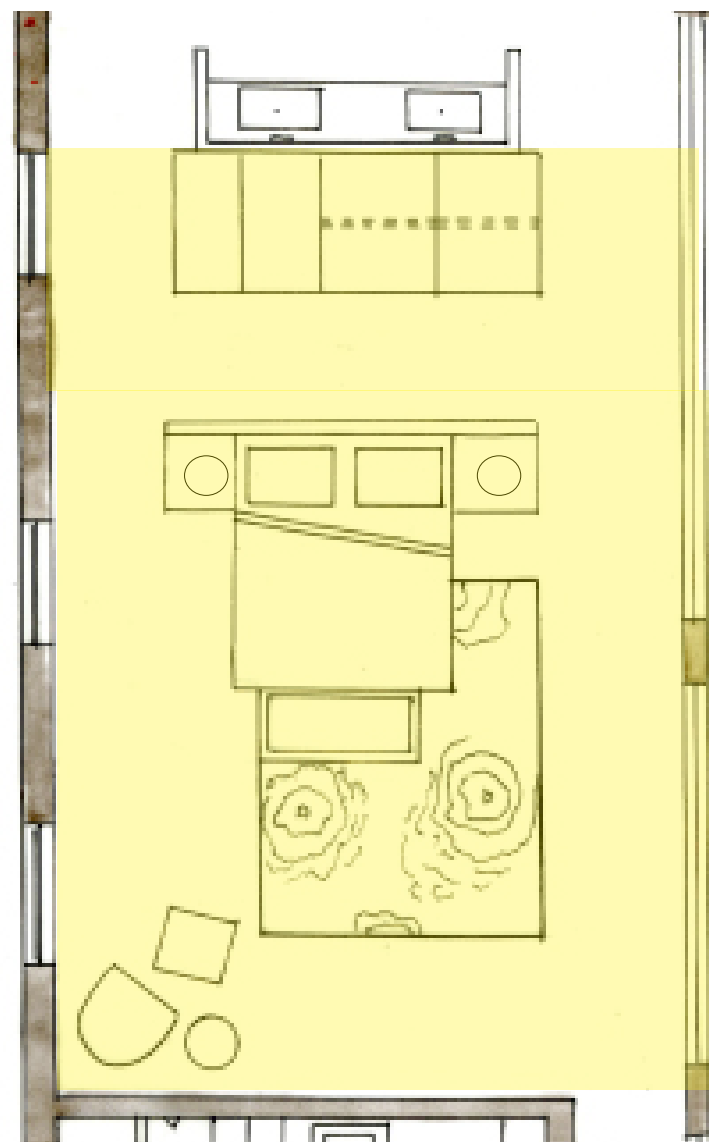
MASTER BEDROOM DESIGN



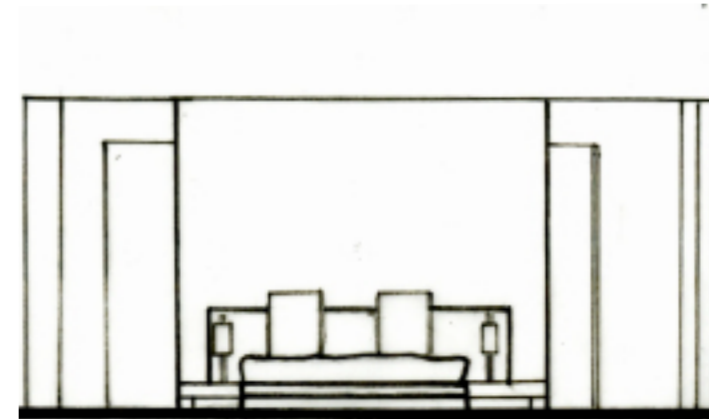
Two pull out cabinets for her shoes and handbag collection. Glass will be used for the front door so the unique collection can be seen.



Antique reproduction chair made through Zuniga Interiors.



3/16' = 1' 0"



3/16' = 1' 0"



Floating Top Platform Bed: Haiku Design  
H. 31"  
W. 147"  
W, Headboard 103"



Floating Square Table Lamp  
H. 20 1/2"

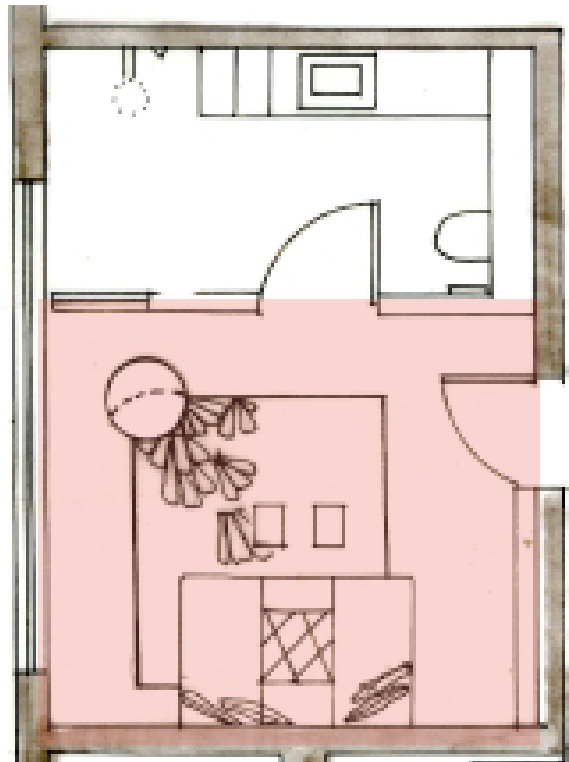



Princess Qevher  
Designed by Esti Barnes.  
Hand-tufed. 10' X 8'

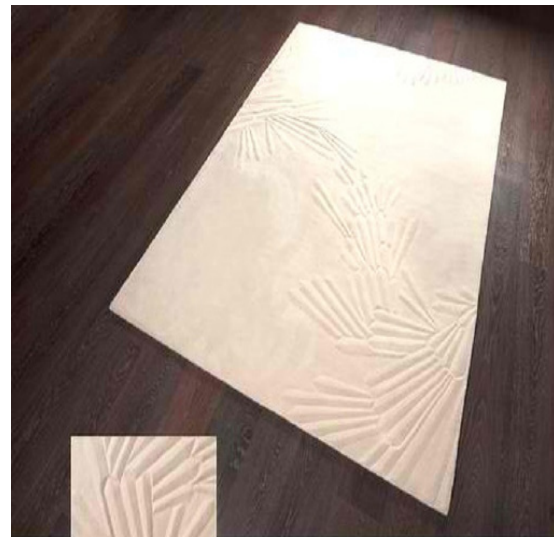


Julian Chichester Zebra Bench  
A 1950s inspired bench with a wood frame.

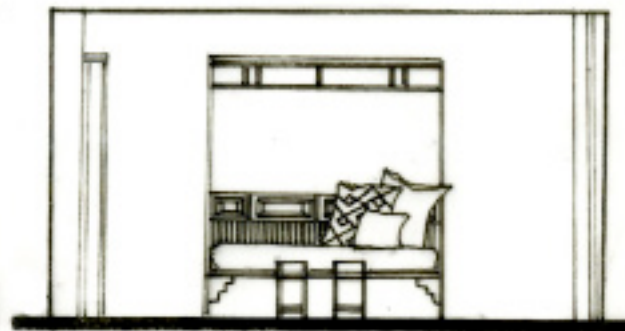
GUEST BEDROOM DESIGN




3/16" = 1' 0" 



Europa Rug  
Designed by Esti Barnes. Hand-tufted. 7' X 8'



3/16" = 1' 0" 

San Francisco Decorator Showcase  
philpotts Interiors



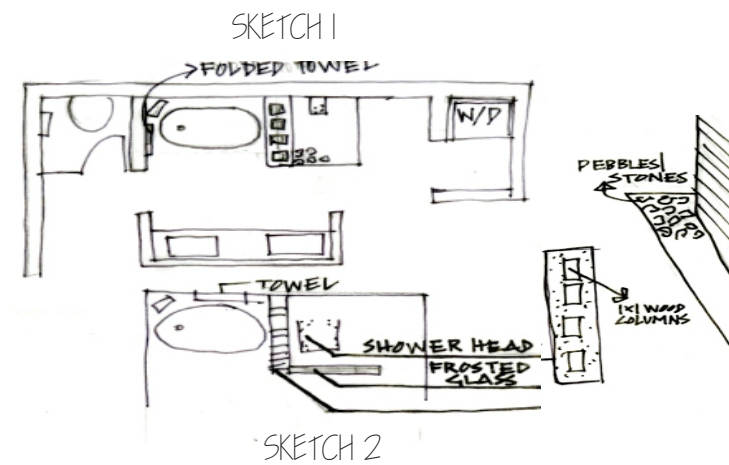
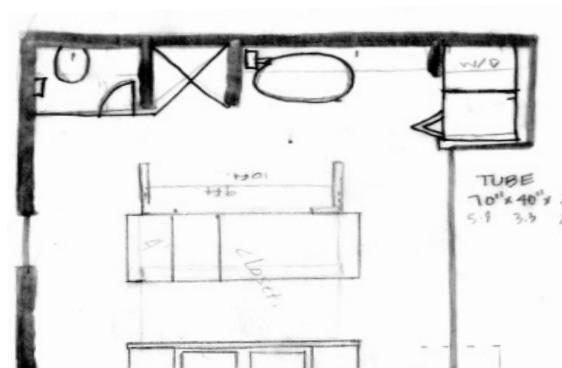
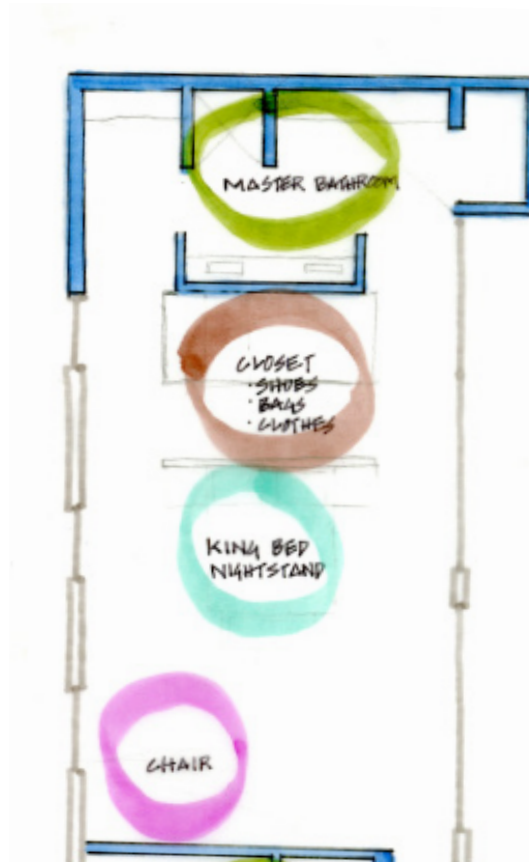
The Pattern on the right is the replacement for the exciting design behind the bookshelf.



Nana Ditzel's hanging egg chair.

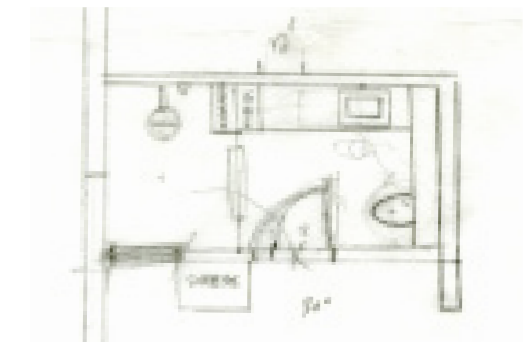
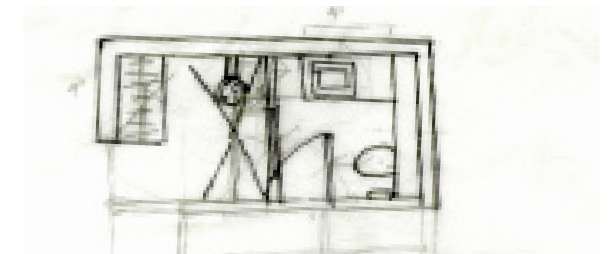
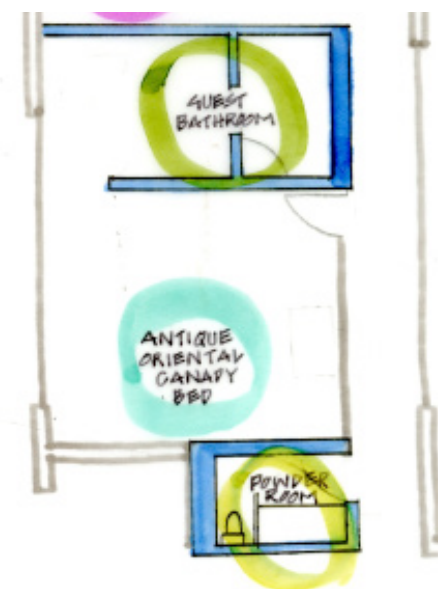
# BATHROOM DESIGN

# PERLIMINARY BATHROOM LAYOUTS



## MASTER BATHROOM SKETCHES

Taking the original given layout and changing it to fit the clients needs. Kept the sink, toilet area. In sketch 2 the walls are wood and the filling on the bottom is pebble creating a Zen atmosphere to the bathroom where iris can take a relaxing shower.



## GUEST BATHROOM SKETCHES

The first initial sketch had a partition wall between the shower area and the sink and toilet area. The second sketch further experiments with the placement of things and the organization around the shower area.

# FINAL MASTER BATHROOM DESIGN

A master bathroom where Iris Spencer can have a zen atmosphere from her busy day at work or even the studio. The use of pebbles for the partition walls, the shower has a metallic pebble flooring providing a soothing shower experience.



WALL

Pebbles on the floors of partition walls. Wall 2 is made out of stone like how in the picture on the right hand side.

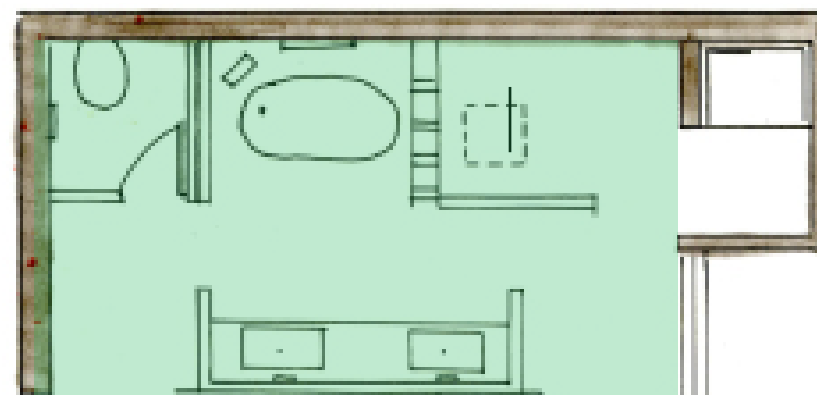


SINK

indiana Buffstone sink with AXOR Starck Faucet

## PORCELANOSA®

Most of the products used in this bathroom is from Porcelanosa. They have new and innovated modern style appliances.

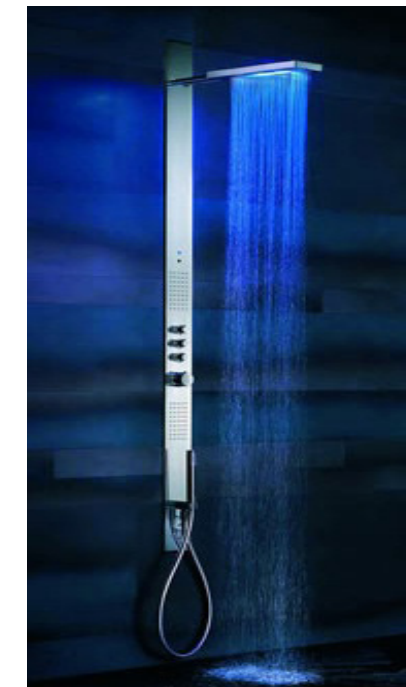


3/16" = 1' 0" ↑

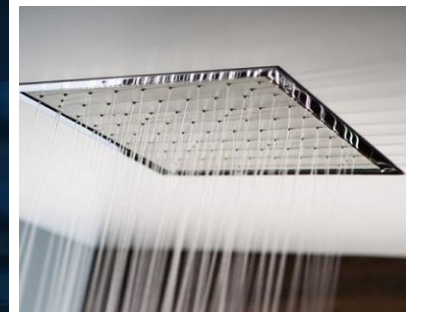


STANDING ALMOND TUB

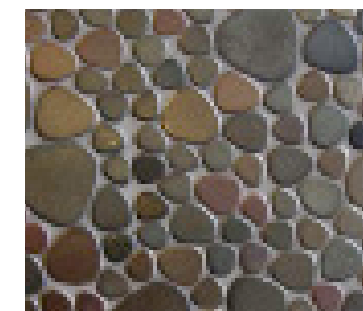
### SHOWER ELEMENTS



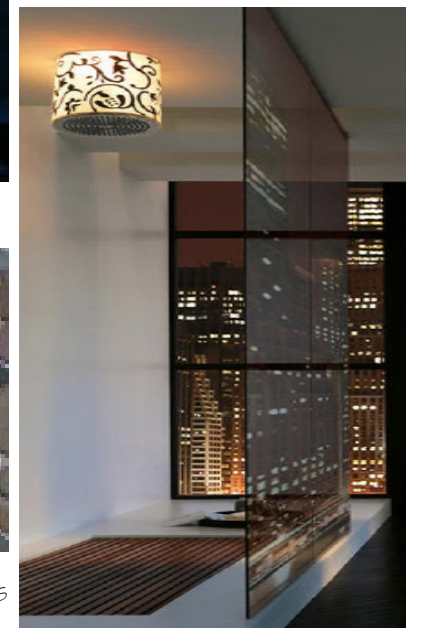
NK Shower Pack



12" Rain Shower



Pebbles-Metallic Glazes  
Porcelain Tile Mosaic

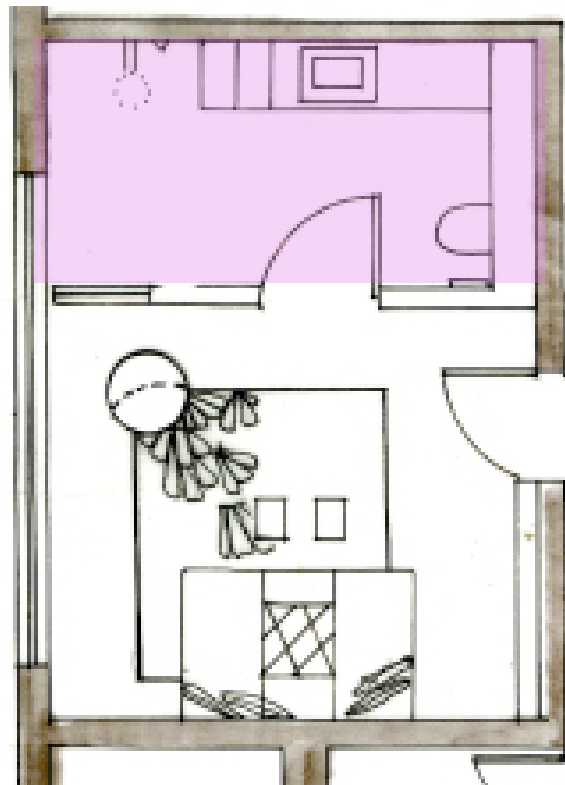



Frosted Glass

# BEDROOM DESIGN

# FINAL GUEST BATHROOM LAYOUT

A bathroom that reflects the bedroom design with the wood finish and the fiber designed engraving fro the shower glass wall visible in the bedroom.



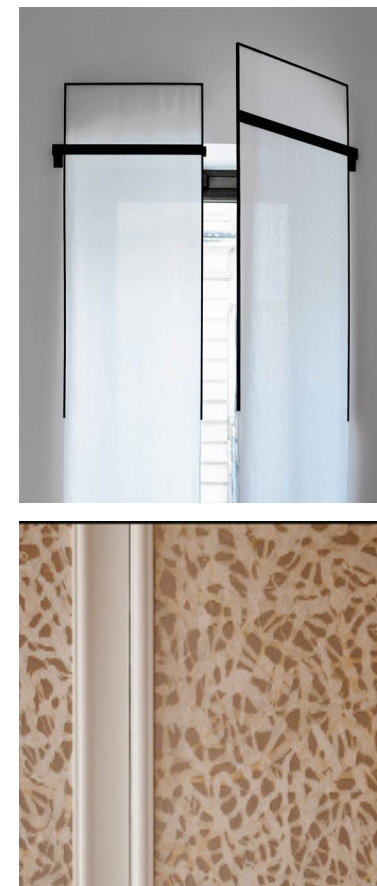
3/16" = 1' 0" 



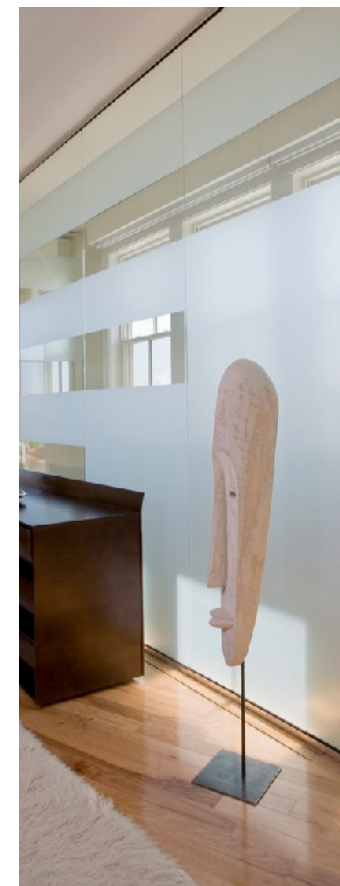
Inspiration  
The shower is separated from the rest of the restroom.



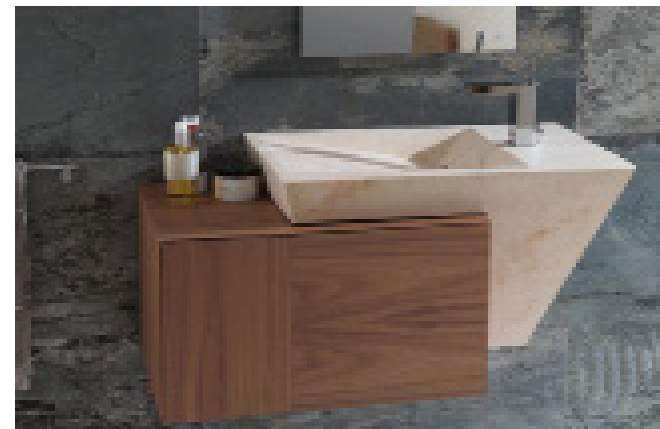
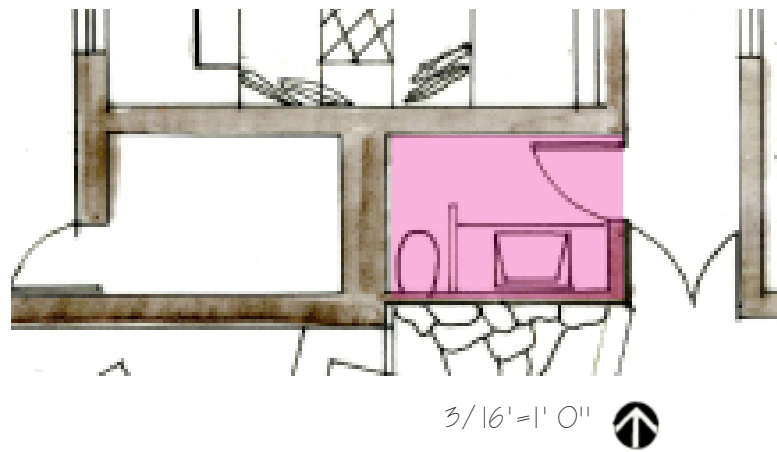
Shower Head  
Bend Mix: Porcelanosa



Shower Glass Wall  
The Fiber pattern engraved on the surface.



SINK



Porcelanosa: El Lavabo Zen Irumpe Con Fuerza



Porcelanosa Oxo: Wall tiles



A very simple and clean layout with a touch of excitement provided by unexpected shapes and strong textures. While the sink accents the powder room.



# SOCIAL SPACE DESIGN

SOCIAL SPACE INITIAL SELECTIONS





SOCIAL SPACE LAYOUT

BAKER FURNITURE



Buble Drum  
H. 17"  
DIA. 15.875"



Athens Lounge Chair  
H. 29 3/4"  
W. 30 3/4"  
D. 33"

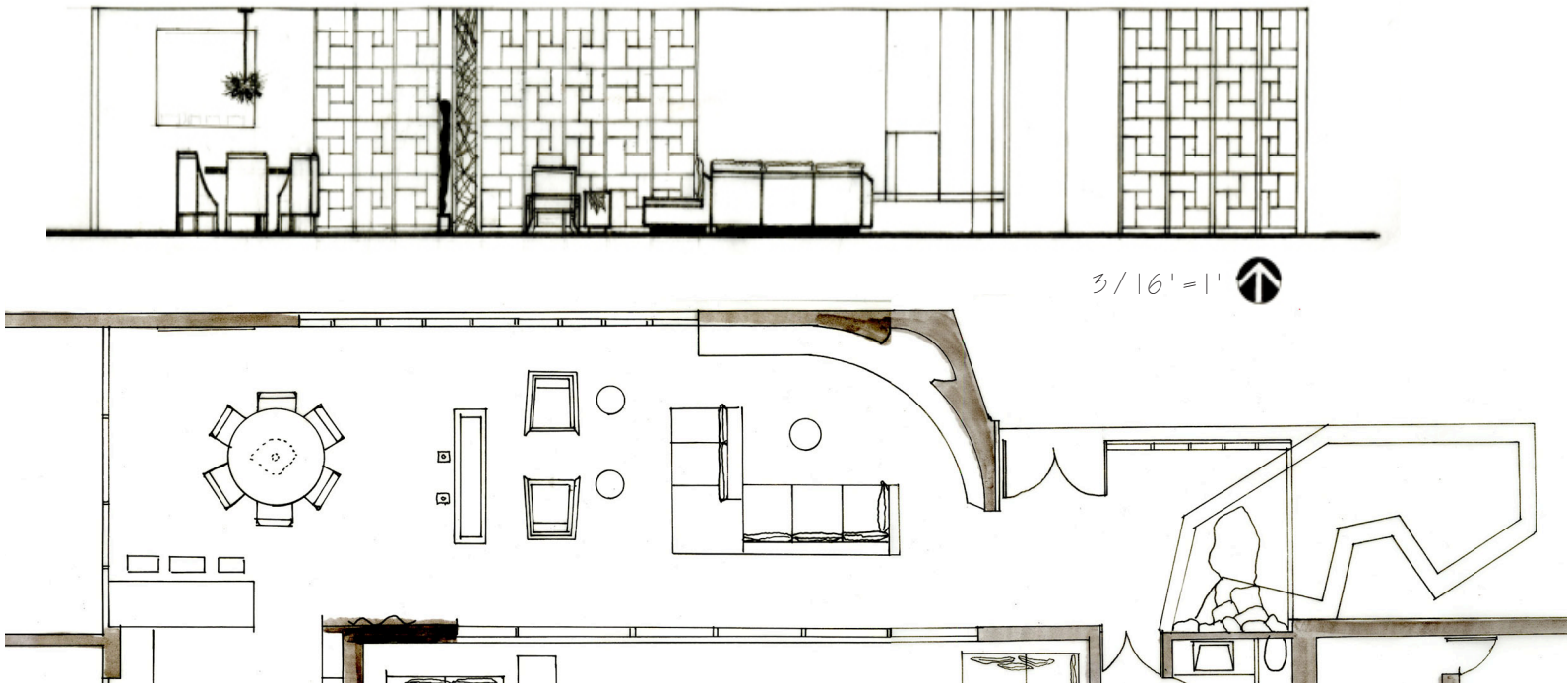
McGUIRE FURNITURE



Medium Round Cement Stool  
H. 18"  
D. 16"



Freedom Crochet Fiber Art, Tapestry, Wall Hanging  
Jillian Culver



JACKSON ARLESS SOFA  
96 Inch Split Sofa on the Left and Arless Sofa with Bumper on thr Right.

INSPIRATION



Causa Design Group  
One of a kindsari fabrics that were made into custom pillows and drapes.  
The simple furniture with the contrast of the bronze from the fire place. With just the right amount of color with the pillows.

GLASS WALL WITH FIBER ART  
Hand Pluncked: Angora fiber, Tort Color

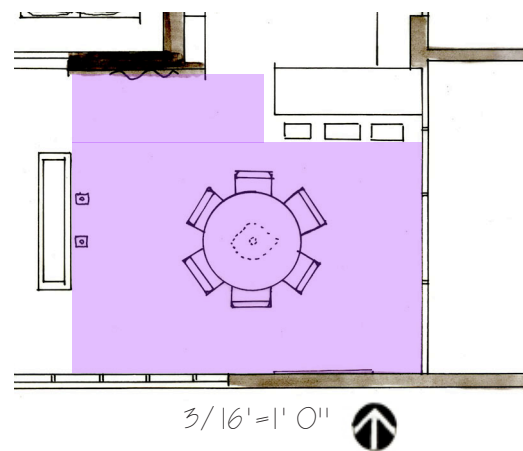




## DINING DESIGN

# DINING LAYOUT

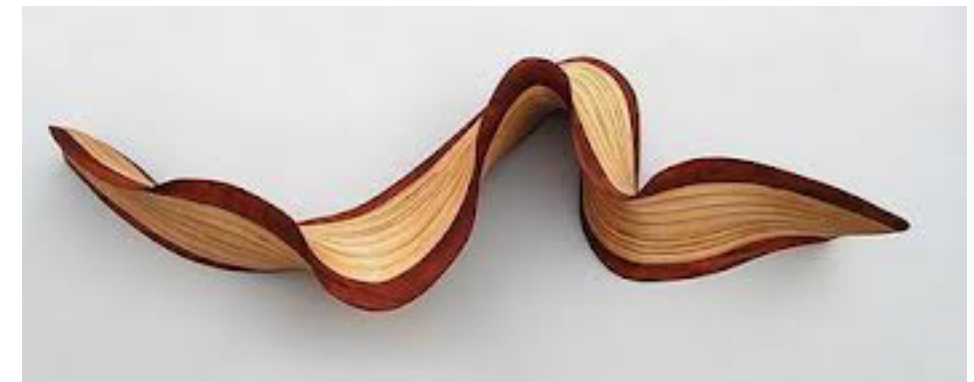
A fun and enovating space that is all about the arts. All the pieces are warm colors.



Marina dining room chair.



FUBRISH  
Sputnik Brass Chandelier  
H. 6'  
D. 29"  
Rodes. 12"



Wallwave: Kerry Vesper  
H. 56"  
W. 14.5 "  
D. 6"



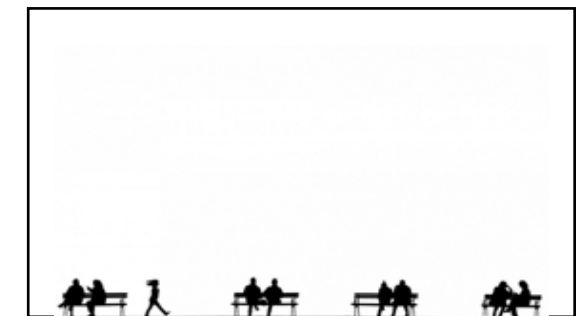
Modo Swivel Stool  
Antonello Italia



Salvage Oak & Walnut Dining Table  
Philip Culbertson  
Culbertson Design



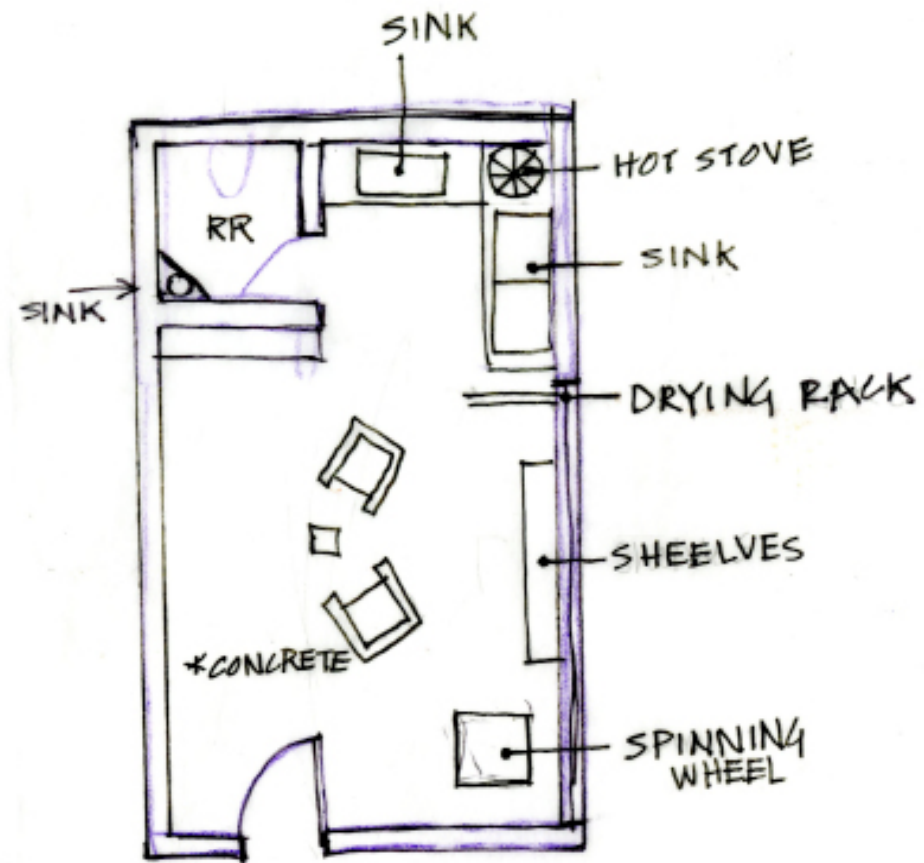
Renaissance Man and Woman  
Woman  
H. 62"  
D. 7.5"  
W. 7.5"  
Man  
H. 62.5"  
D. 7.5"  
W. 8.5"



Photoqroah

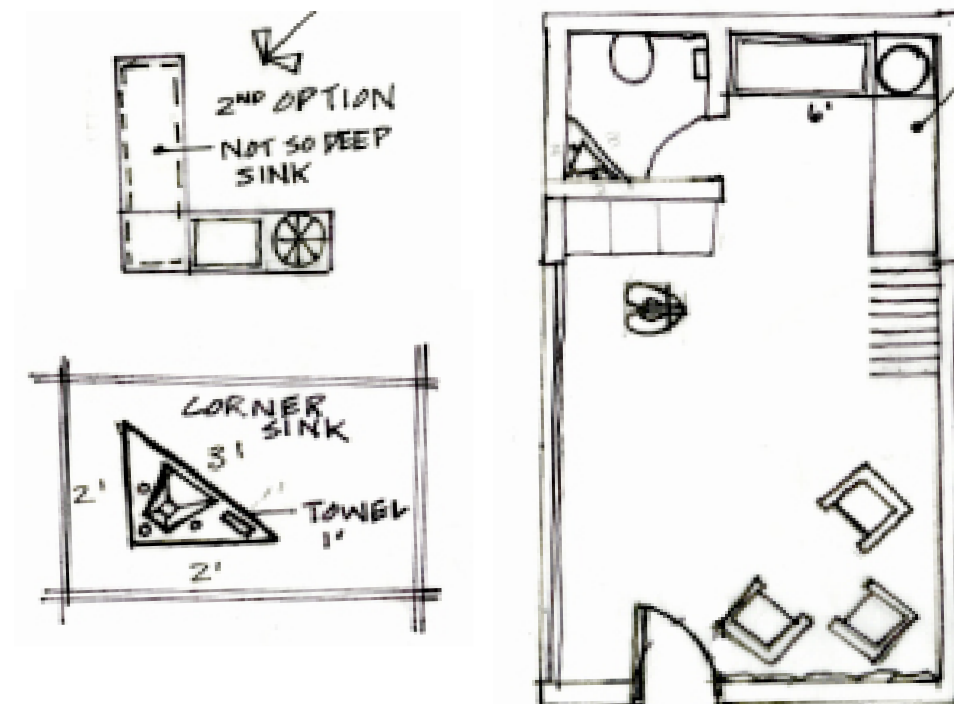
STUDIO DESIGN





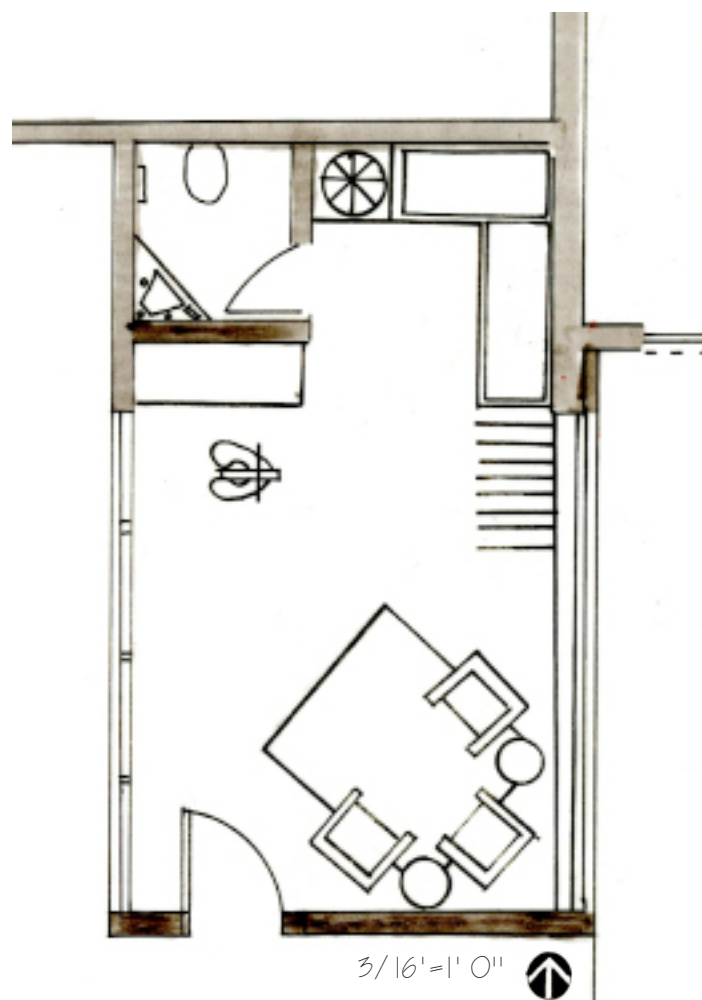
SKETCH 1

Windows on either side allows natural light to come into the space. Rearrange the furniture and having the bathroom sink as a corner element. The floor is concrete since the beauty of the left over dyeing colors that dropped creates a fun energetic environment.



SKETCH 2

The door was shifted to the left to provide room for the setting arrangement. The dyeing center has plenty of sink space and eight drying racks in its close proximity.



A nice movable space that is used by Iris's studio. Its a fun and innovated space where she can go to work and relax. The window on either side provides natural light which is very relaxing and the becomes welcoming.



Marvelled Design had a beautiful Corner Bathroom Sink



GRUNDTAL Drying rack, wall



ESQUIRE EVOLUTION: Deigned By Esti Barnes. Hand-Tuffed in wool.



LADYBUG SPINNING WHEEL  
SCHACHT



McGUIRE: MARVIEW LOUNGE CHAIR