

# Savannah

## A Map of Perception



Nisha Patel  
DRAW 115-04  
Spring 2012  
Professor LaRaine Papa Montgomery

# Table of Contents

## Project I: ENTRY, PATH, AND PLACE

City Scale

Primary Entries  
Primary Pathways  
Primary Places

## Project II: IMAGE OF THE CITY

Ward Scale: JASPER WARD  
Elements of Imageability  
Path  
Edge  
District  
Node  
Landmark

## Project III: PHENOMENOLOGY OF PLACE

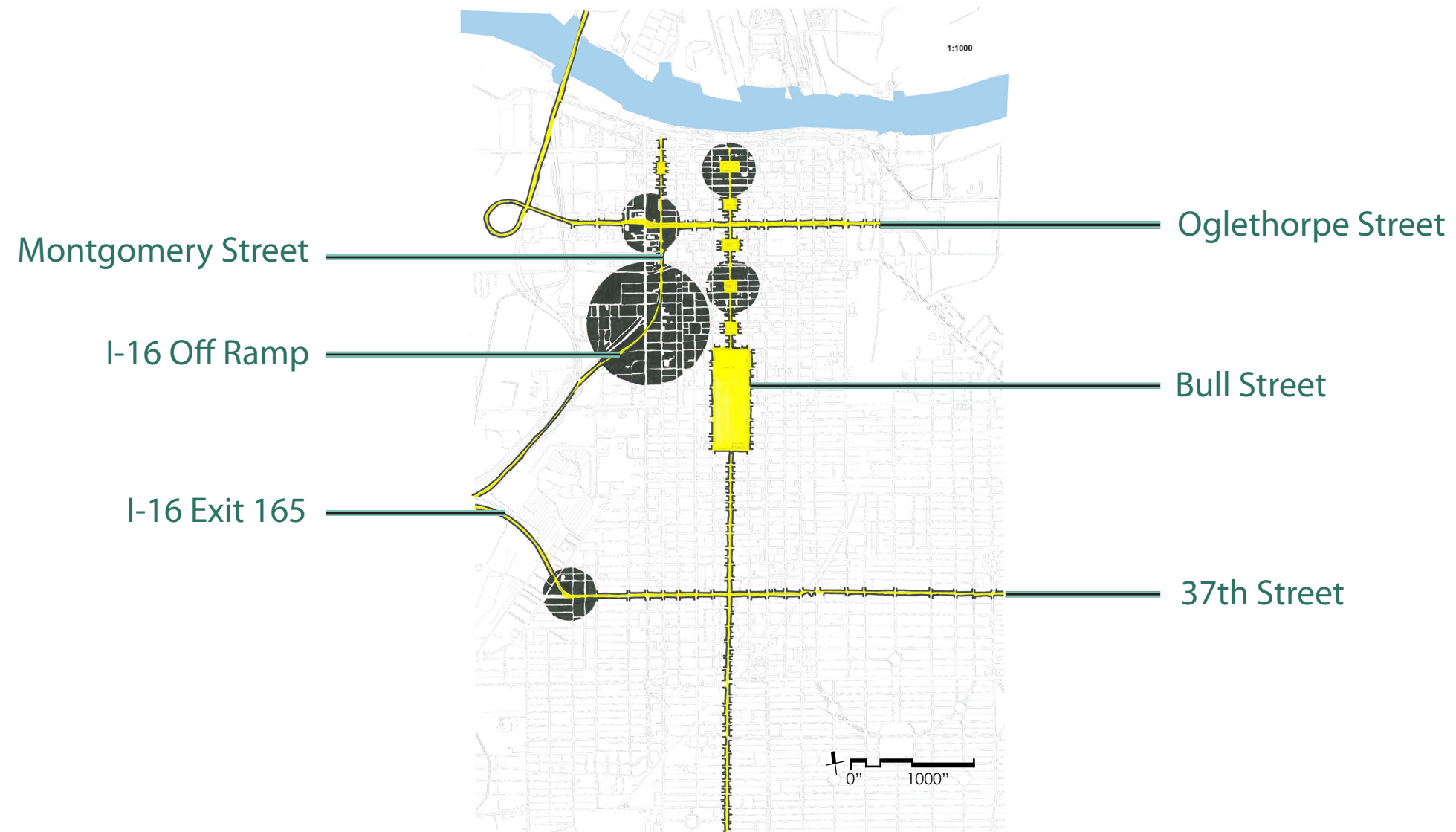
Genius Loci: Spirit of the Place  
The Green-Meldrim House

## Dedication

Parents give everything from money and other desires. I truly appreciate my parents being there every step of the way. When I arrived at SCAD I was so excited but being an Indian and having an expectation of going into a medical field was truly a challenged I faced. I dedicate this portfolio to my parents and Savannah College of Art and Design for allowing me to achieve my goals and strive for excellence.

# Entry Map

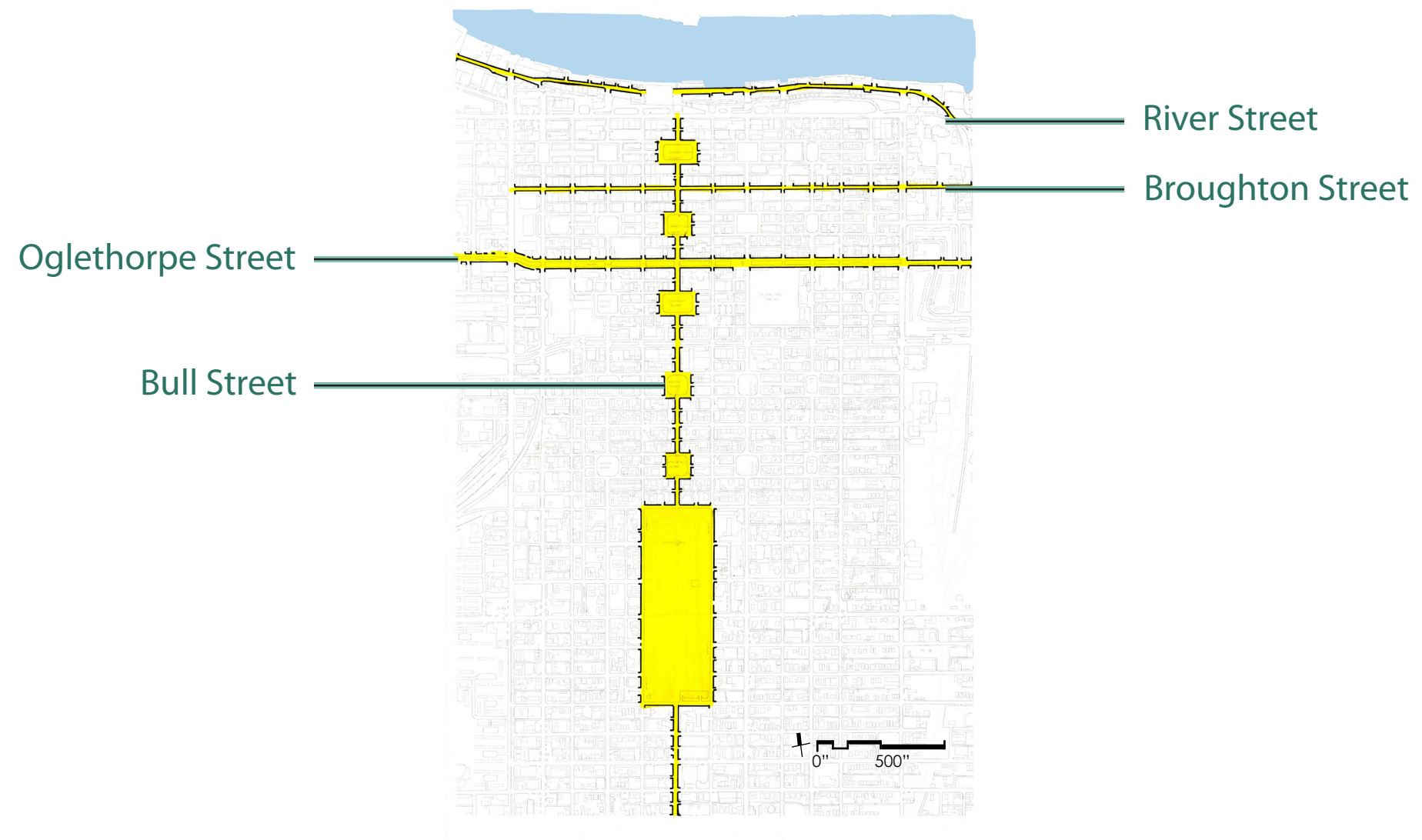
All paths have their starting point, from which we are taken through a sequence of spaces to our final destinations.



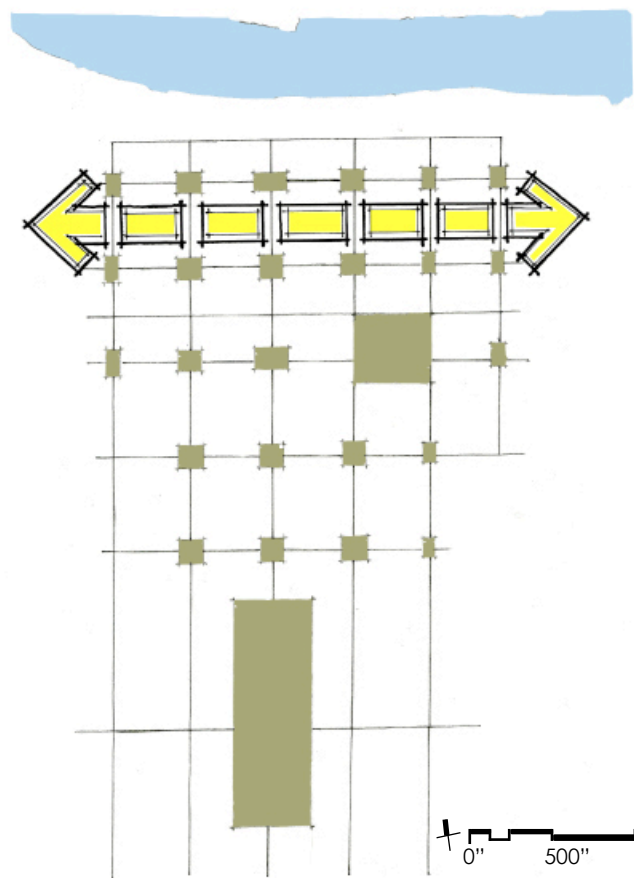


# Pathway Maps

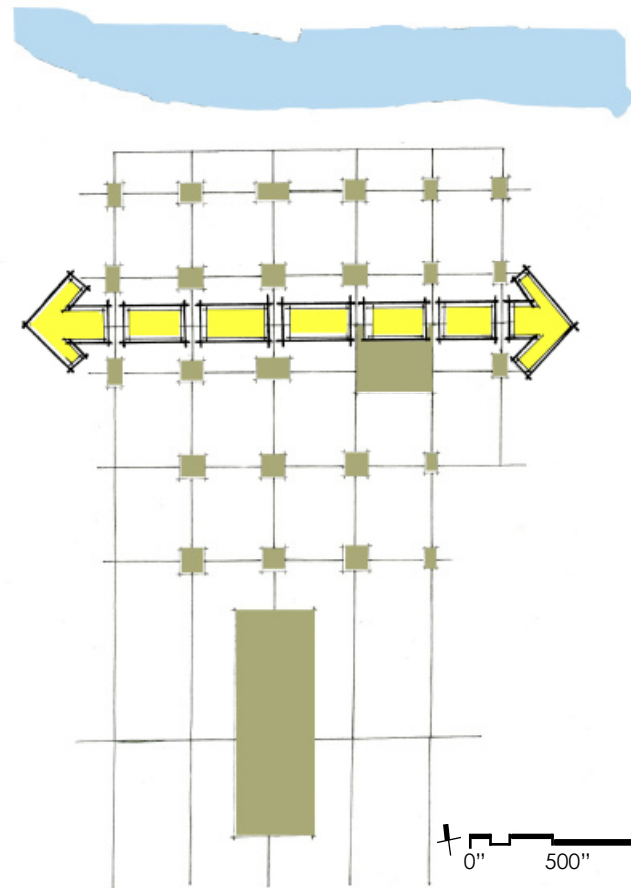
All paths of movements help us distinguish between major routes leading to major spaces and secondary paths leading to lesser spaces.



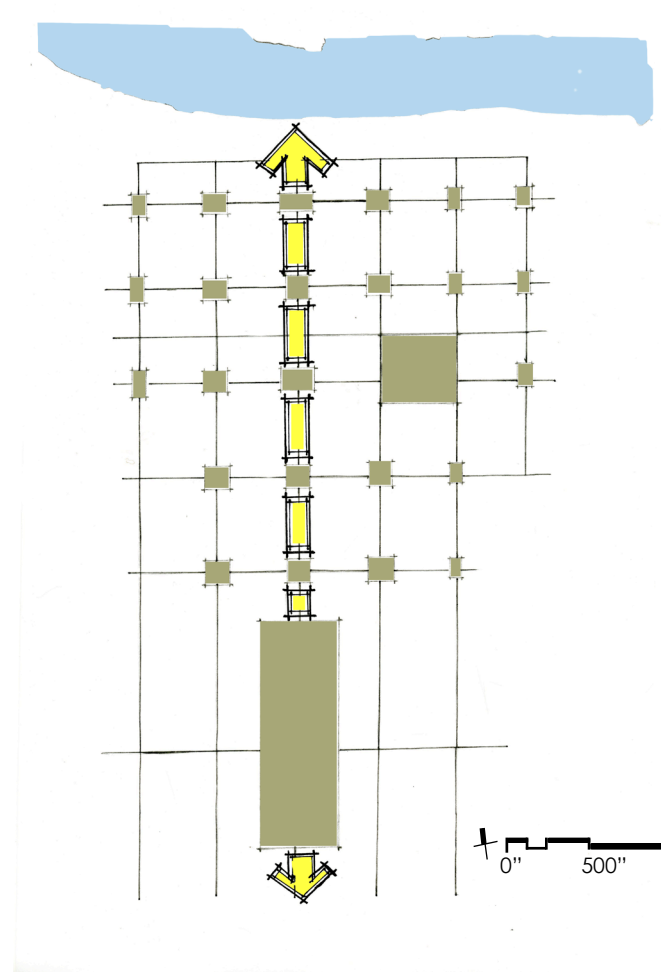
# Pedestrian Circulation Charts



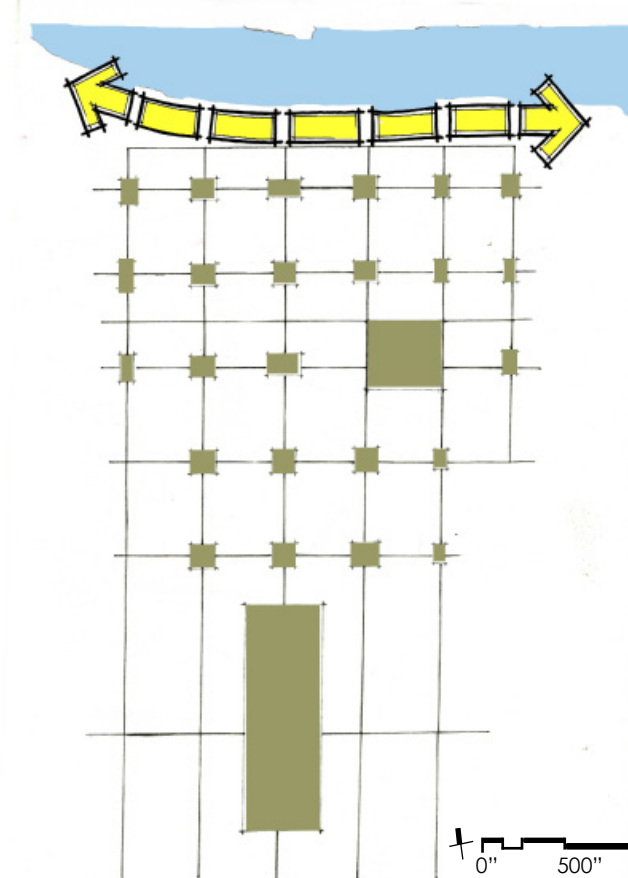
Recreational  
Broughton Street



Civic  
Oglethorpe Avenue



Cultural  
Bull Street

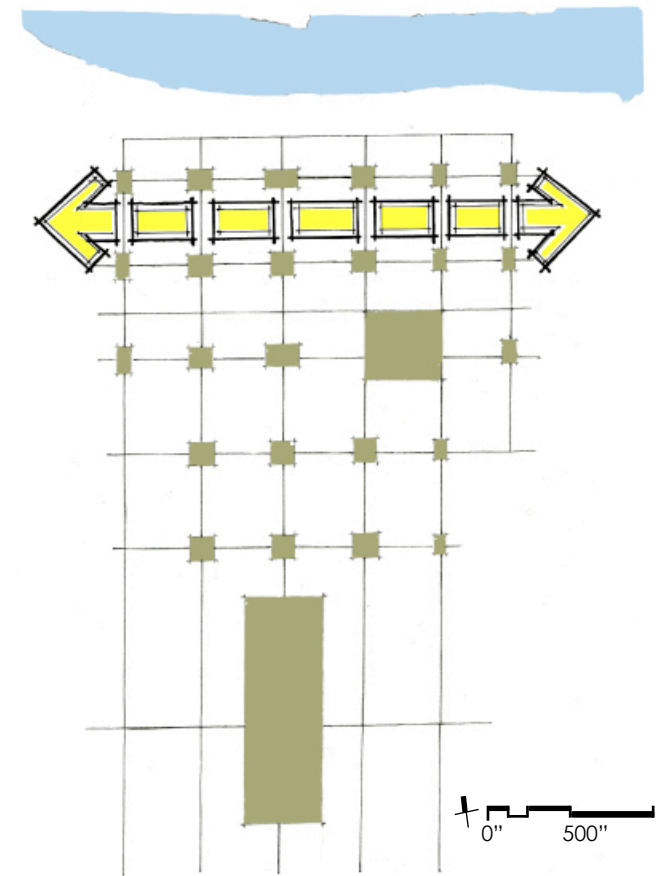


Historic  
River Street

## Broughton St. Pedestrian Circulation Chart at 1":500'



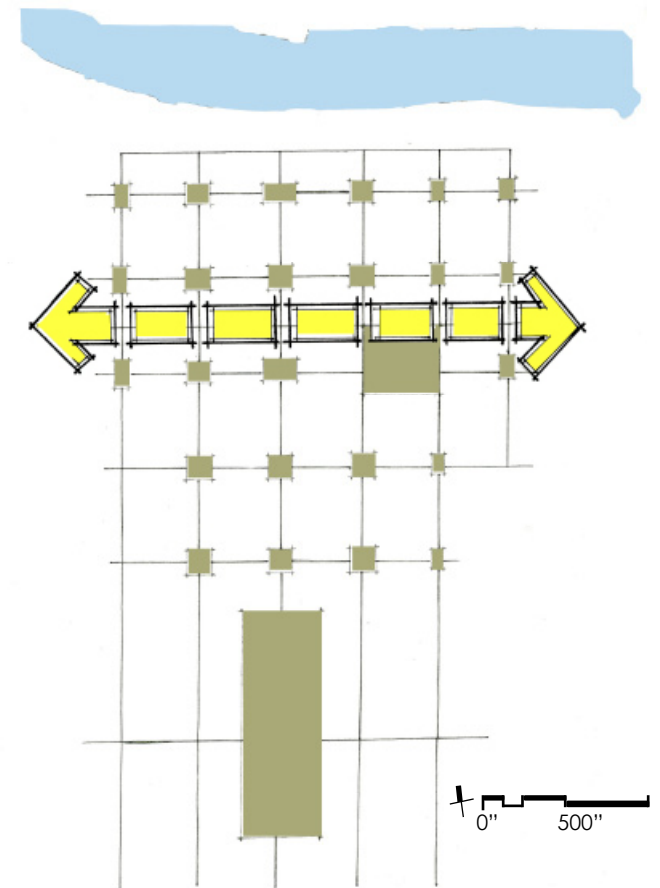
Broughton Street is full of life, providing a wide variety of destinations, for locals, tourists, and students alike. There are always people roaming the street. Restaurants, theatres, shops, museums, galleries, libraries, cafes offer a diverse range of recreational activities form morning to night.



# Oglethorpe St. Pedestrian Circulation Chart at 1":500'



Oglethorpe is the home of the civic. As you walk along the sidewalk you encounter many government buildings such as the Civic Center, police station, fire station, churches, schools, and museums. The Colonial Park Cemetery is a big attraction to tourists, as it dates from the early 18th century and is, moreover, a beautiful, quiet tree-shaded oasis within this busy city. This street was named after James Edward Oglethorpe, founder of Savannah in the year 1733.

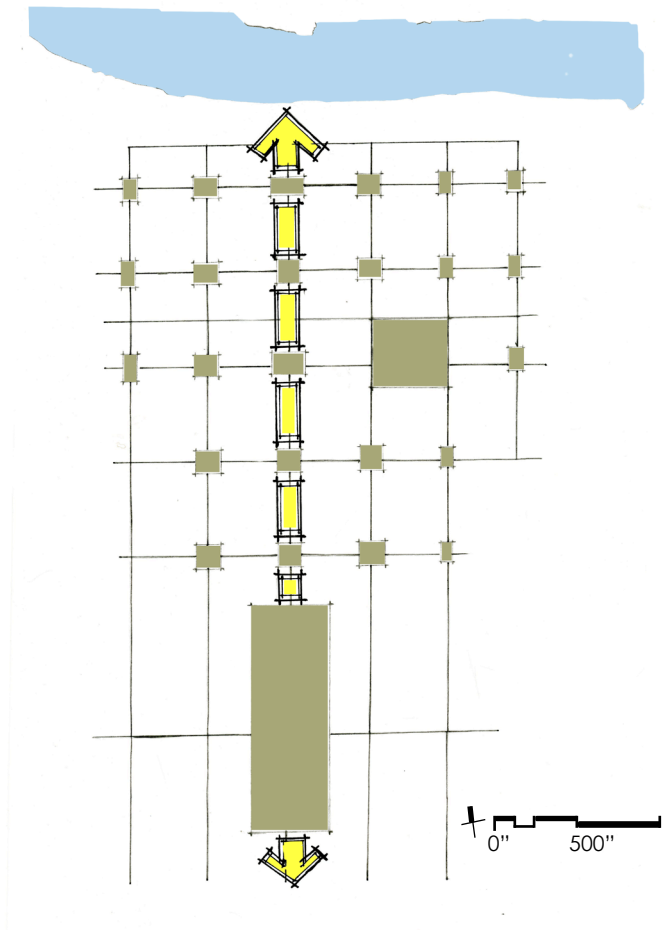




## Bull St. Circulation Chart at 1":500'



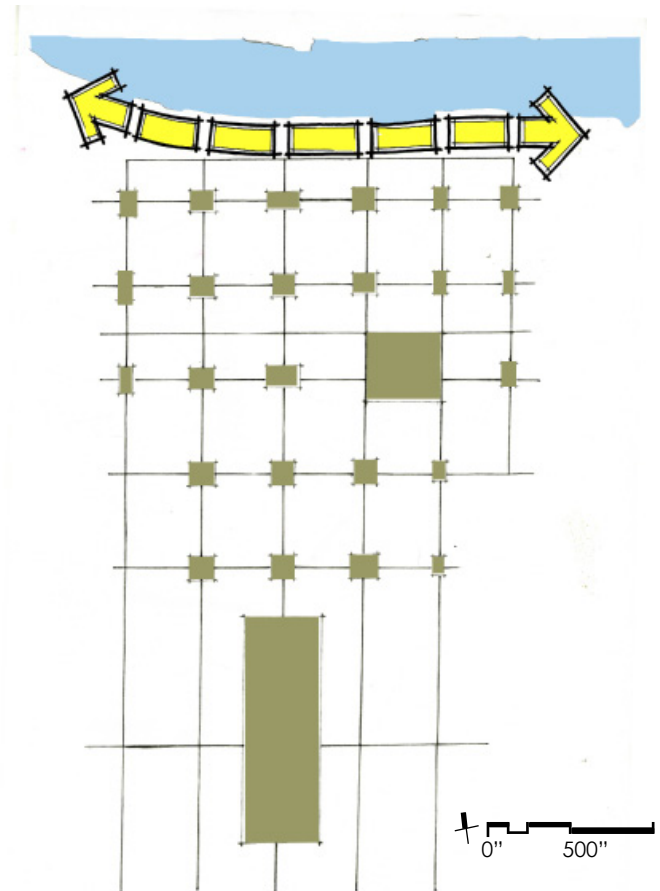
Bull Street is considered to be the heart of Savannah and a street enriched with culture, since it is one of the oldest streets in Savannah. Even before the Europeans settled this region, the Native American Indian culture utilized this path as a way to travel to the river and the sea.



## River St. Pedestrian Circulation Chart at 1":500'

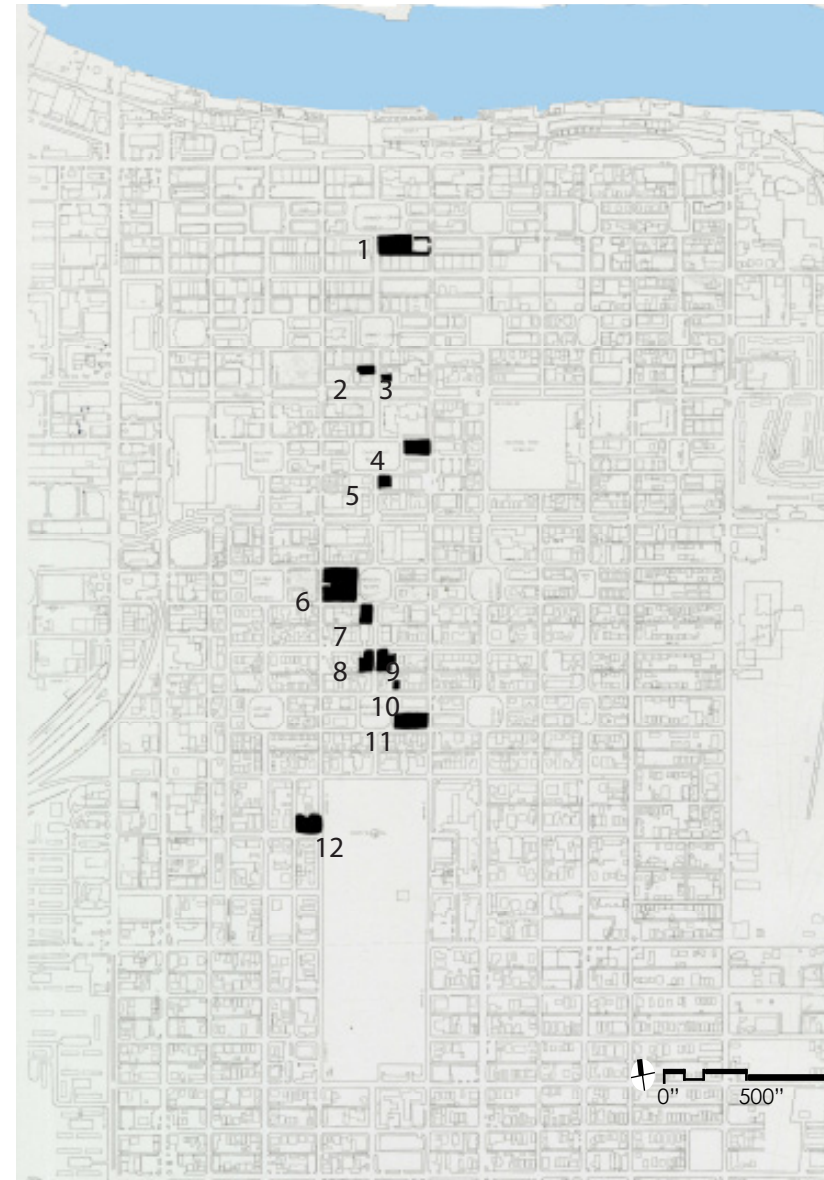


River Street is one of the oldest streets in Savannah. It has served as the heart of history for Savannah since the river gave life to Savannah in the year of 1733. The river has served as the major import-export pathway since then, and today maintains significance as the second busiest seaport in America. The cobblestones (or "ballast" stones) came over on English ships, and were deposited to help pave this busy industrial street.



# Bull Street Cultural Buildings

1. Lucas Theater
2. Smooth Cafe
3. Juliette Gordon Low Birth Place
4. Savannah Theatre
5. Gallery Espresso
6. Green Meldrim House
7. Gryphon Tea Room
8. Kim Iocovozzi Fine Art
9. George Davis Antique and Interiors
10. V&J Duncan Antique Map
11. Congregation Mickve Israel
12. Magnolia Hall



# Oglethorpe Street Civic Buildings

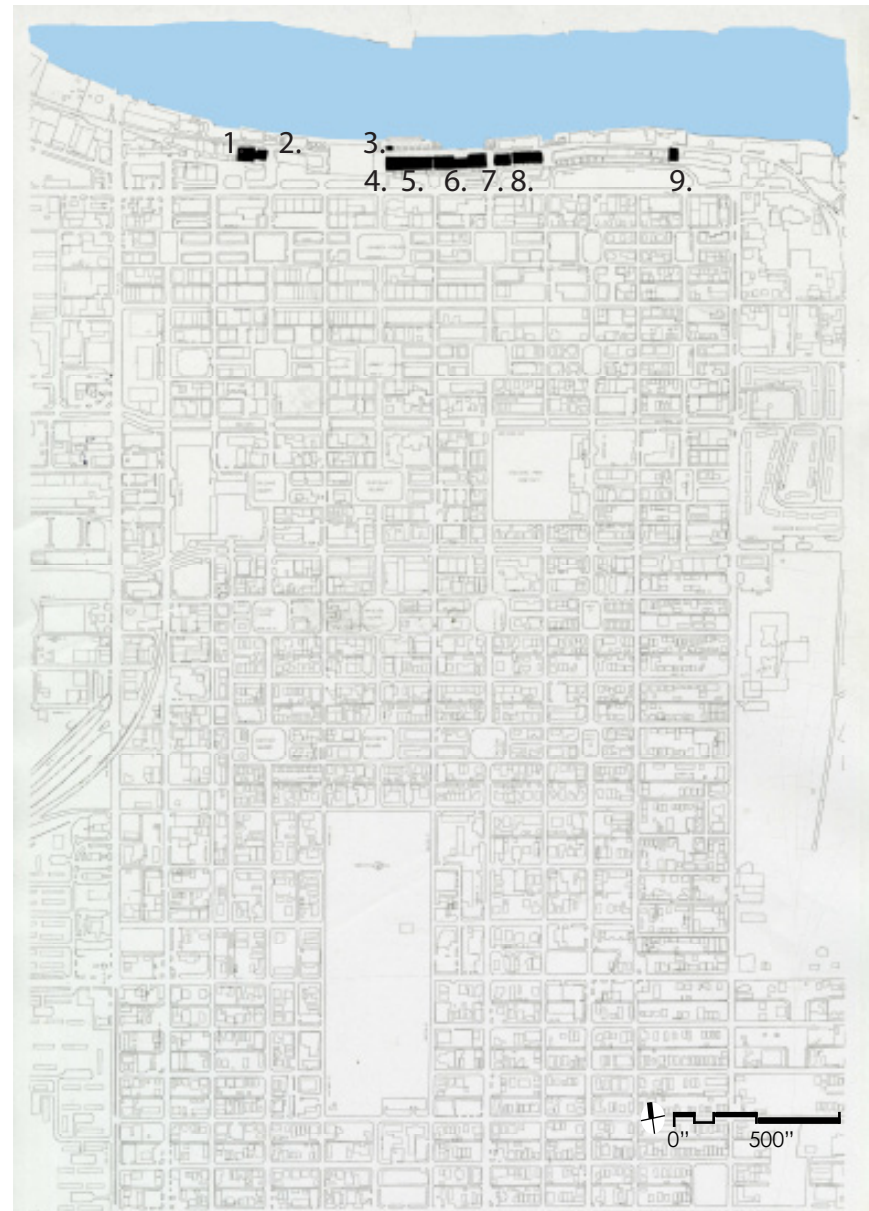
1. Chatham County Superior Court
2. Civic Center
5. U.S. Coast Guard
7. U.S. Corps of Engineers
8. Independent Presbyterian Church
9. Savannah Chatham County Public School System
10. Savannah Church of Christ
11. Fire Station
12. Colonial Park Cemetery
13. Savannah Chatham Metropolitan Police Department





# River Street Historic Buildings

1. Lowden 1909
2. Chart House
3. Warehouse
4. Vic's Coffee House
5. Solomon's Lodge
6. The River Street Inn
7. Cotton Exchange
8. Gallery 109
9. Olde Harbor Inn



Nisha Patel  
DRAW 115-04  
Spring 2012  
Professor LaRaine Papa Montgomery

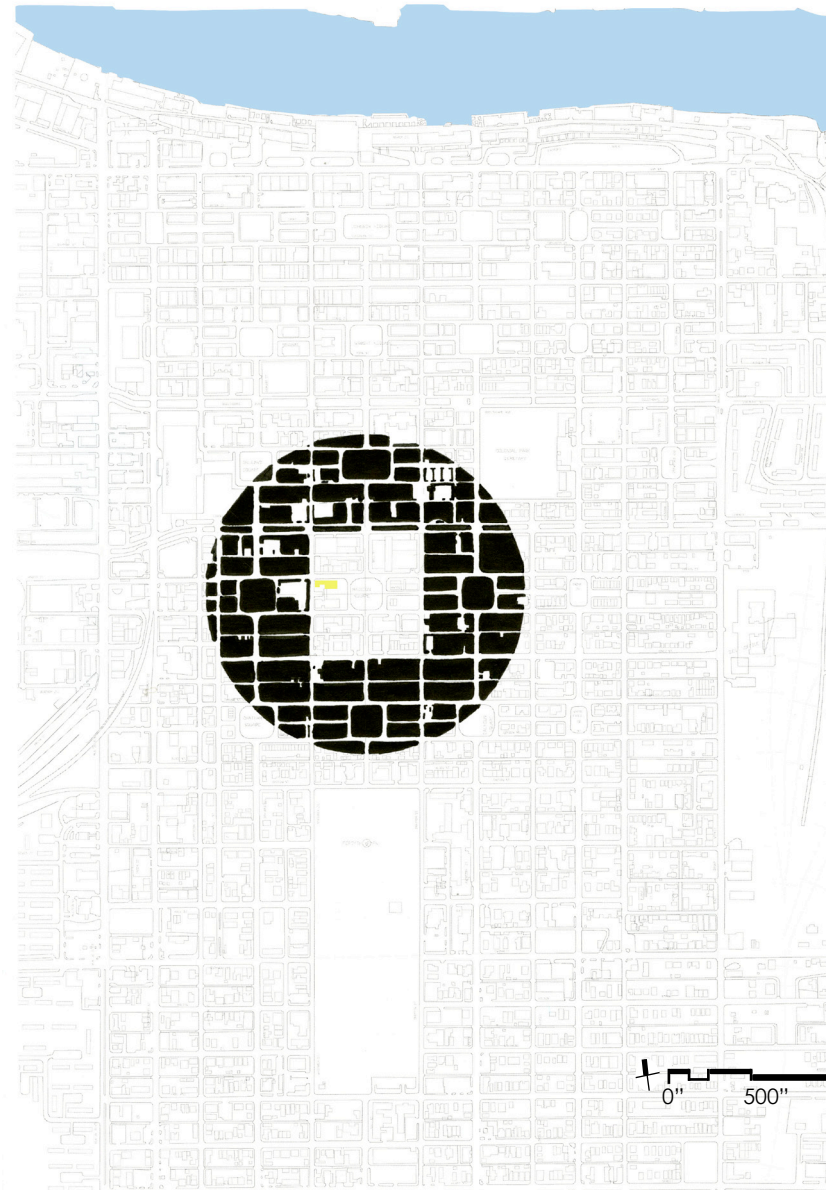
# Broughton Street Recreational Buildings

1. Loose Lucy's
2. Gap
3. Go Fish Clothing & Jewelry Co.
4. Savannah Bee Company
5. Paris Market
6. One Time Fashions
7. Urban Outfitters
8. The Clothing Warehouse
9. Banana Republic
10. DC2 Design
11. Gina's Beauty
12. Civvies
13. 24e
14. Halfmoon Outfitters
15. New York Boutique



## Ten Minute Walking Distance

The ten minute walking distance provides a comfortable time frame for the average human to walk in ten minutes. Within this diameter, one finds all the basic needs: leisure, services, and entertainment.





# Jasper Ward Site Plan

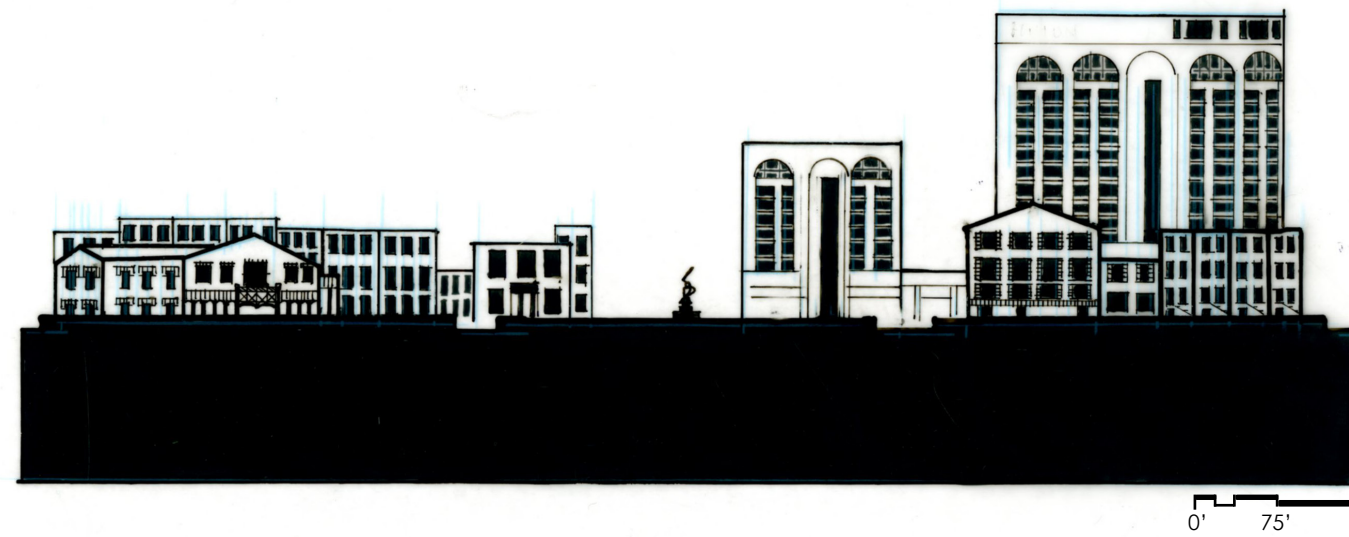
Jasper Ward was the 18th ward in Downtown Savannah to be laid out according to the Oglethorpe grid plan formula.



Nisha Patel  
DRAW 115-04  
Spring 2012  
Professor LaRaine Papa Montgomery



# Jasper Ward Section: Building Elevation



Nisha Patel  
DRAW 115-04  
Spring 2012  
Professor LaRaine Papa Montgomery

# Jasper Ward Section: Tree Canopy

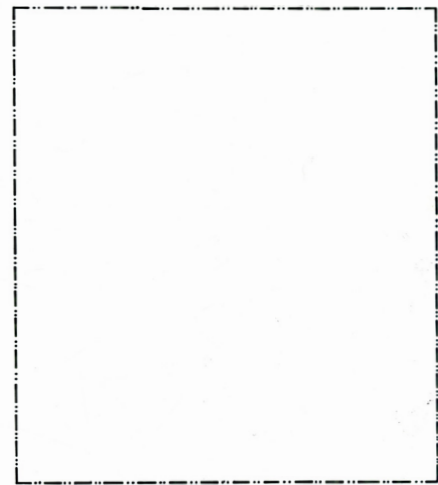


Nisha Patel  
DRAW 115-04  
Spring 2012  
Professor LaRaine Papa Montgomery

# Elements of Imageability

## EDGE

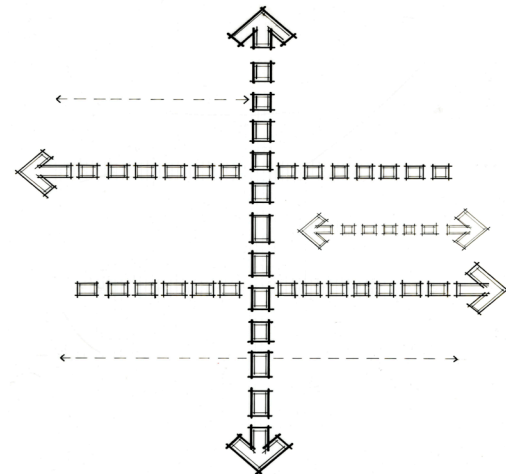
An edge is the boundaries of an area. Edges separate both districts and each ward in Savannah.



Madison Square: Jasper Ward

## PATHS

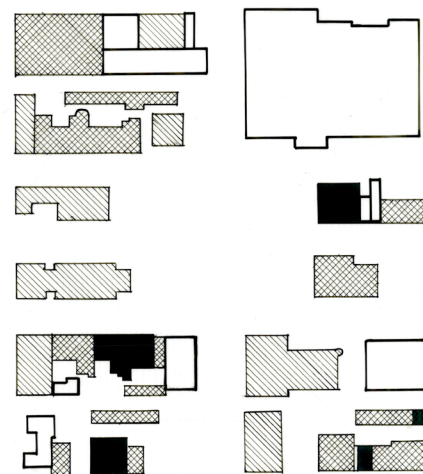
Are routes where people customarily, occasionally, or potentially move. It helps shape your perception of space through movement.



Primary Pathway  
Bull St.

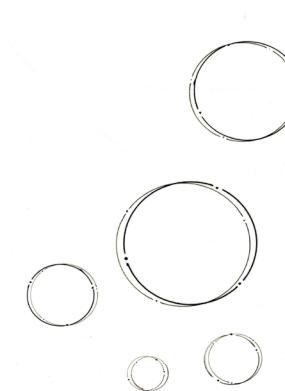
## DISTRICT

Is the organization of a plot of land. The ward system allowed for public buildings East-West, and residential zones on the North-South.



## NODE

Are the main gathering places which represent the most dominant social space in a city.



Madison Square  
Hilton DeSoto  
St. John's Episcopal Church  
Green-Meldrim House  
SCAD Administration/Shop  
Gryphon Tea Room

## LANDMARKS

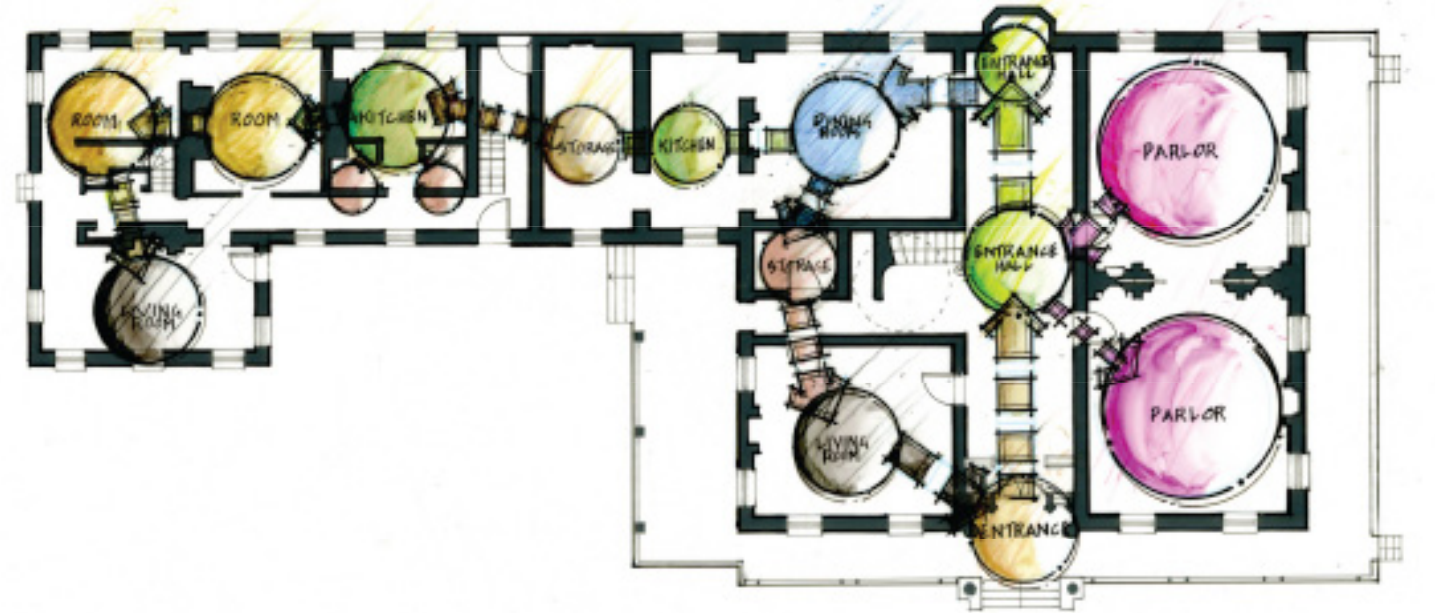
Are buildings that create a hierarchy within their environment in a city.



Hilton Desoto  
Green Meldrim House  
St. John's Episcopal Church  
Sorrel Weed House  
Gryphon Tea Room

# Green Meldrim Floor Plan

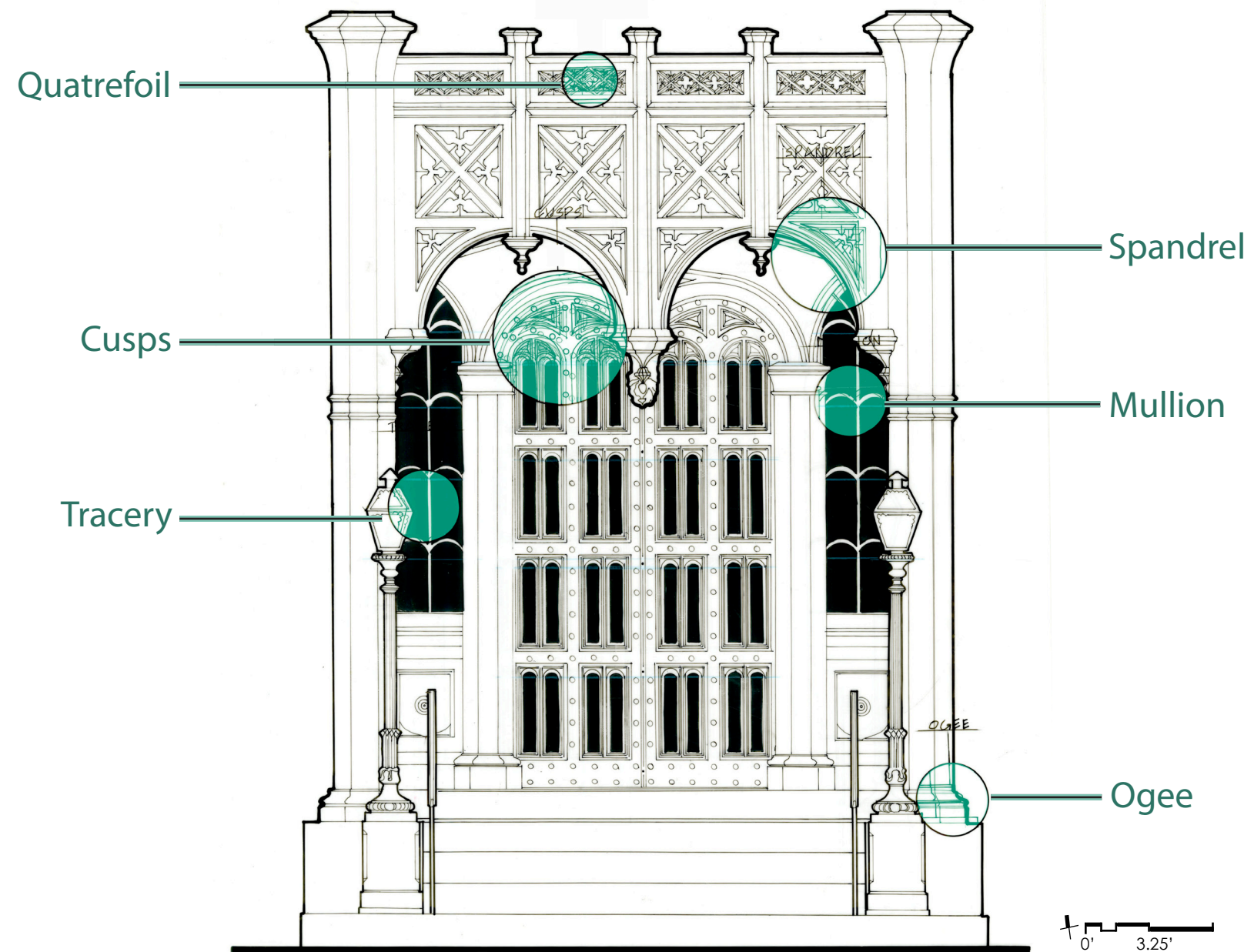
Scale: 3/32":1'0"



The Floor Plan is an orthographic projection of the portion of a building that is cut four feet above the floor. The plan opens up the interior of a building to reveal a view, showing us the configuration of walls, columns, shapes, dimensions, and orientation of spaces. Also, the plan view shows patterns of window and wall openings, and connections between the interiors and exteriors.



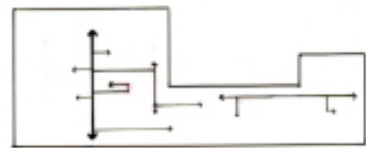
# Green House Entrance Portico



Nisha Patel  
DRAW 115-04  
Spring 2012  
Professor LaRaine Papa Montgomery

# Formal Ordering Diagrams

## CIRCULATION



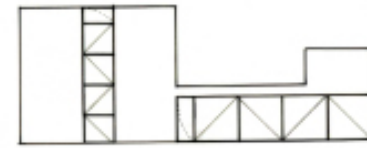
The transmission or passage of anything from place to place or person to person.

## HIERARCHY



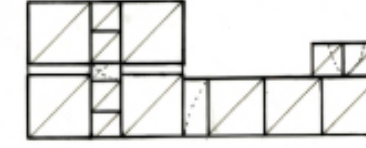
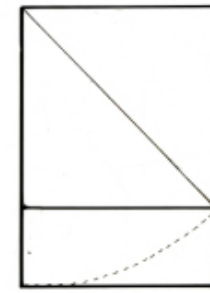
Is the dominant element of a building.

## PROPORTION



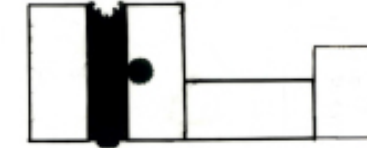
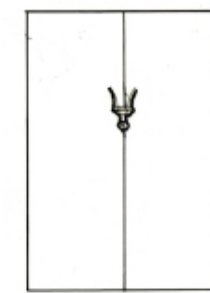
Comparative relation between magnitude as to size or the ratio.

## GEOMETRY



The building is constructed from perfect squares and a golden section which is the ration between two portions of a line.

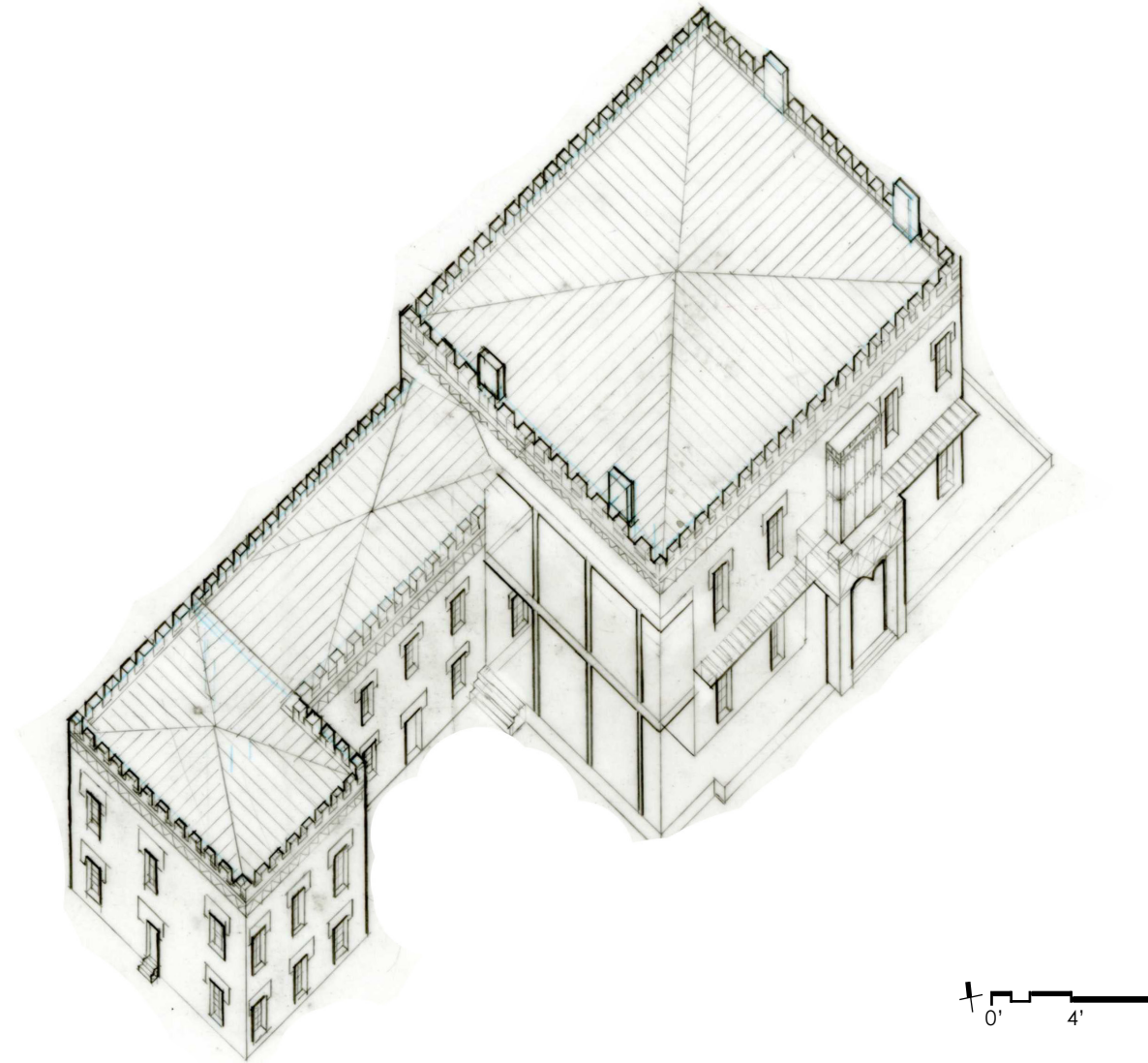
## UNIQUE AND REPETITIVE



The one and only characteristic that is different from other repeating forms of a building.

# Oblique Paraline Drawing

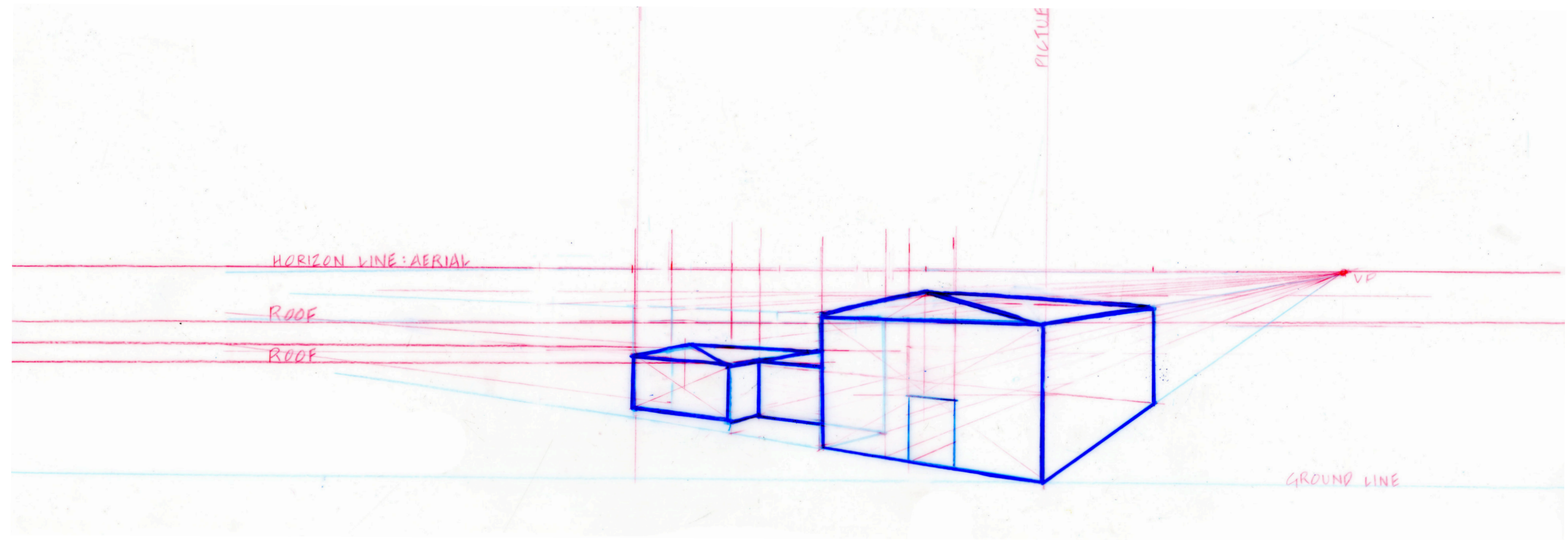
A plan projection oblique drawing rotated 45 degrees, provides a sense of three-dimensional quality of space, while giving detailed view of the enclosure and the construction.



Nisha Patel  
DRAW 115-04  
Spring 2012  
Professor LaRaine Papa Montgomery

# Perspective Drawing

Single view drawing that represents the reality of form in three dimension as we naturally perceive it.





# Final Rendering



Nisha Patel  
DRAW 115-04  
Spring 2012  
Professor LaRaine Papa Montgomery