

MAX

## CONVERT CONFIGURED ORDER APP

You own the MAX Feature Option Configurator. Now, let this add-on resolve your prolonged stocking challenges.

**MAX**  
An ECI Software Solutions Company

## Seamlessly Drive Order Management Efficiency with a Push-Button Application

The Convert Configured Order application resolves the challenges posed by the need to stock seasonal and configurable orders for extended periods of time.

Many users of the MAX Feature Options Configurator module enjoy its "SHIP from WIP" orientation where the configured assembly is moved to the shipping area and shipped immediately. While this works well in most Assemble-To-Order (ATO) environments, it fails when the configured units are to be stored for a prolonged period in either local or dealer stock. In these situations, managing stored units via open master scheduled orders is not efficient. Hence the need for the Convert Configured Order application.

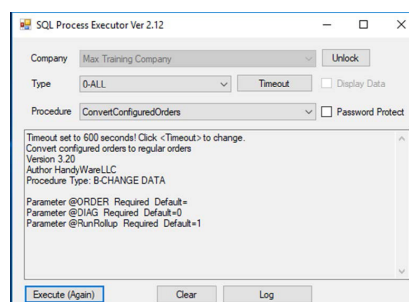
- Creates a unique Part Identifier in the Part Master and Part Sales tables
- Creates a standard bill of material for that unique Part Identifier from the configured string (i.e., actual options chosen on the order)
- Clones the family part routing to the unique Part Identifier
- Performs a cost roll-up on the new assembly to provide a standard cost
- Cancels the master scheduled order tied to the original configured sales order
- Clones the original configurator sales order to the next delivery number, using the unique Part Identifier
- Cancels the original configurator sales order

With the Convert Configured Order App, you have the capability to seamlessly and successfully convert your configured units to your "normal" MAX setup (i.e., Part Identifier, Bill of Material and Routing) on a "normal" sales order. This enables all other "normal" MAX processes, including stocking the configured units, to take over smoothly and operate normally.

### Key Features

The Convert Configured Order application resolves the stocking problem by performing the following tasks immediately after a configured order is entered:

- Reads the configuration string from a configured sales order, then:



Contact us for  
more information  
[max.servicessinquiry@ecisolutions.com](mailto:max.servicessinquiry@ecisolutions.com)