

MAX

PROCESS EXECUTER

Do more for less with SQL procedures



Get the Flexibility to Do More with Your SQL Procedures

This product allows the user to call a SQL stored procedure and run it outside of the SQL Server Management Studio.

Most database managers and administrators like SQL because of its ability to efficiently process data and update values at the database level. One benefit derived from this is the ease with which SQL procedures are now being used to replace what was once a Visual Basic application with a lot less associated overhead—no installation programs, and/or other pre-requirements, etc. However, externalizing these procedures so that they can be made part of normal operations, and not an IT function, is very challenging. This challenge is what the Process Executor has been built to overcome.

KEY FEATURES

- Externalizes SQL Stored Procedures for easy access and use by anyone using a SQL database for all available companies
- Runs stored procedures outside of the SQL Server environment

- Optimizes and automates reporting— example: you can easily run a procedure to update Material Overhead percentages on all purchased parts
- Allows user parameters to be passed at runtime as arguments
- Optionally restricts script execution to admins ONLY

MAX Process Executor puts both power and control in the hands of IT professionals. This application comes with additional consultation time for installation and initial training. You can optionally add the writing of custom stored procedures based on your unique business needs.

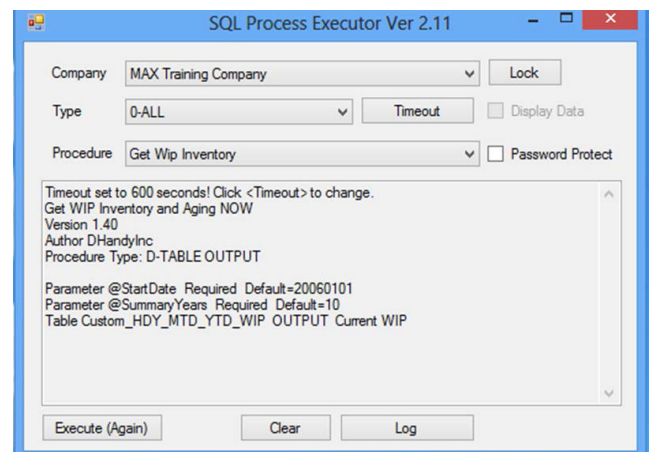


Figure 1: Opening Screen

A SNEAK PEAK AT THE PROCESS EXECUTE APPLICATION

The screenshots below show how you can easily use the Process Execute app to perform different actions as needed to meet your business goals. You have the flexibility to pick and choose from the built-in menu of executable items, customize a procedure for either grid or non-grid input, etc.

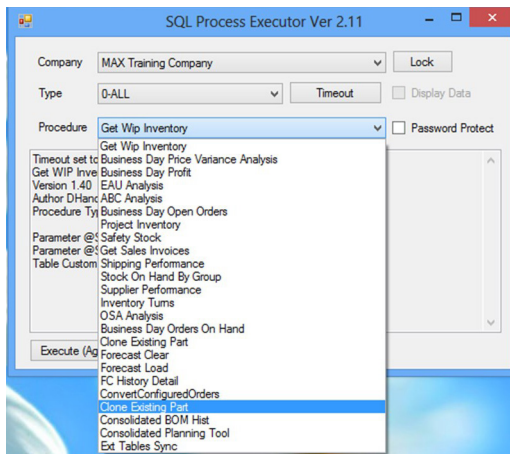


Figure 2: Procedure Selection—allows you to pick a procedure that best meets your business need at a specific point in time.

If the procedure in Figure 3 is designed for grid input, data can be:

- Entered manually
- Cut & pasted from Excel (or any tab-delimited source placed in the clipboard)
- Directly imported from an Excel Workbook

See how the results are displayed in Figure 4.

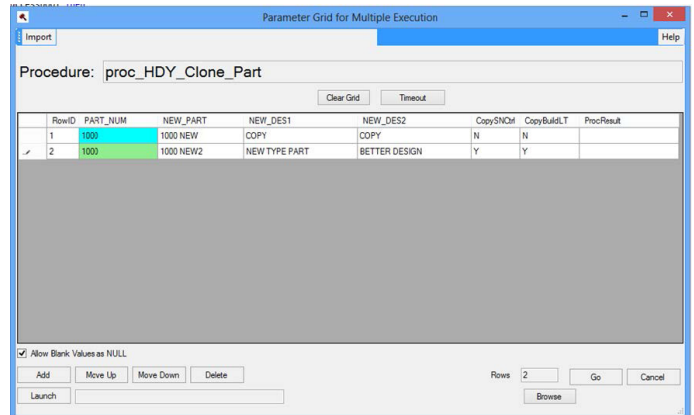


Figure 3: Grid for parameter entry (for grid type procedures)—you can use this function to perform multiple executions at once thereby saving time and effort.

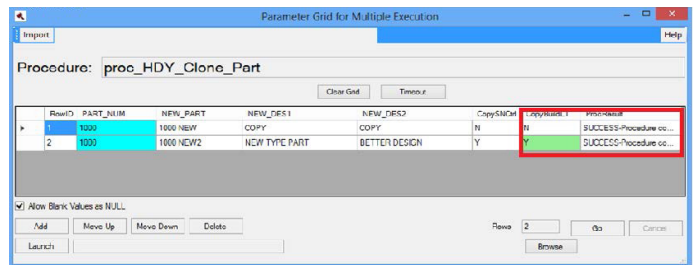


Figure 4: Grid for parameter results showed in the red box; results are displayed for each row in the grid

NON-GRID TYPE

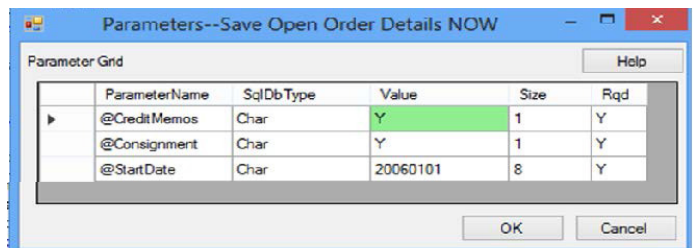


Figure 5: Parameter entry panel—this procedure executes once, and the results are displayed on the main screen

Contact us for more information:
max.servicesinquiry@ecisolutions.com